

Jerry's Pond Improvements

Joint Transportation Committee

IQHQ

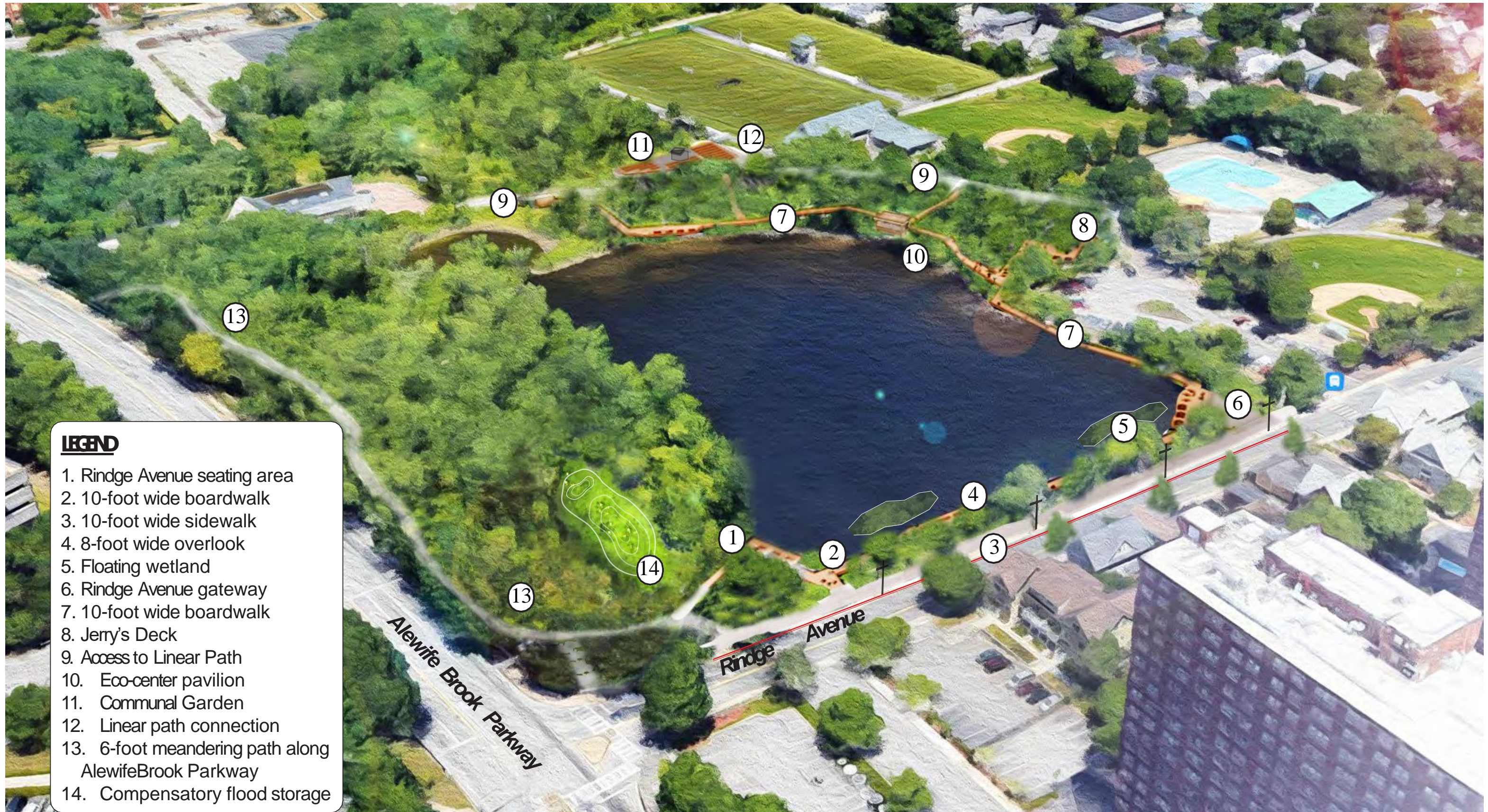
04/16/2025



Permitting Process

- IQHQ started the permitting and public process in January 2021.
- **Close to 200 meetings** since 2021 with community members. Rindge Avenue was the main topic in 90% of 2023-2024 meetings and at least 40% of all meetings.
- In June 2021 and November 2023, IQHQ met with the Joint Transportation Committee, along with CDD, TPT, MBTA, DPW, and members of the public present.
- In May 2022, IQHQ was granted special permit approval for the development area, which included improvements to Jerry's Pond as a condition.
- In March 2024, Jerry's Pond received Conservation Commission approval with an Order of Conditions for the entire public access plan.
- In March 2025, IQHQ submitted its application for a Flood Plain Overlay District Special Permit, pursuant to Article 20.70 of the Cambridge Zoning Ordinance.

OVERALL PLAN



JERRY'S POND

CITY OF CAMBRIDGE

IQHQ

SUMCO
ECO-CONTRACTING

kzla

SITE PLAN

APPROXIMATE PROJECT
AREA LIMITS

FEMA 100-YEAR FLOODPLAIN
(ZONE AE)

NOTE: ALL PROPOSED
WALKWAYS, SIDEWALKS
& BOARDWALKS ARE
ACCESSIBLE
ADDITIONS SINCE
NOVEMBER 2021

CONNECTION TO
LINEAR PATH

6-FOOT WIDE FLEXIBLE
POROUS PAVEMENT
PEDESTRIAN WALKWAY

SITE LIGHT FIXTURE, TYP.

6-FOOT HIGH CHAIN
LINK FENCE

12-FOOT WIDE
CONCRETE SIDEWALK

8-FOOT WIDE RINDGE
AVENUE OVERLOOK

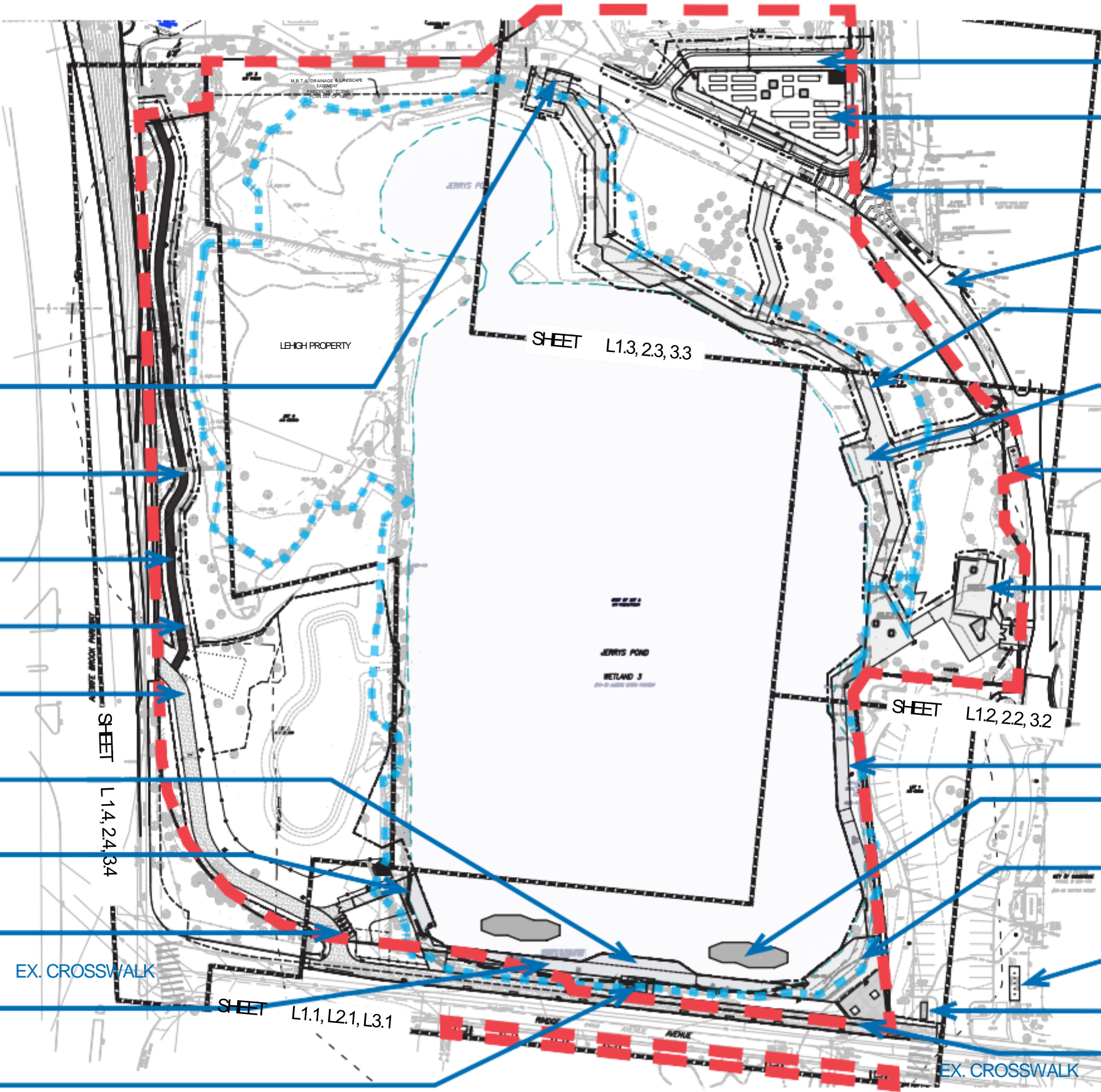
OVERLOOK WITH
SEATING

BIKE RACKS (4) ON
CONCRETE PAD

10-FOOT RINDGE AVENUE
BOARDWALK

ADA ACCESS RAMP TO
BOARDWALK

N.T.S.



9'-6"-WIDE BITUMINOUS
LINEAR PATH SPUR

COMMUNAL GARDEN

RECONFIGURED
INTERSECTION (BY CITY)

LINEAR PATH

10-FOOT BOARDWALK

ECO-CENTER PAVILION
WITH GRILLS, STORAGE &
OVERHEAD STRUCTURE

BIKE RACKS (5) ON
CONCRETE PAD

JERRY'S DECK AREA
WITH SEATING

10-FOOT BOARDWALK
FLOATING WETLAND

RINDGE AVENUE
GATEWAY WITH SEATING,
OVERLOOK & TREES

EXISTING BIKE RACKS

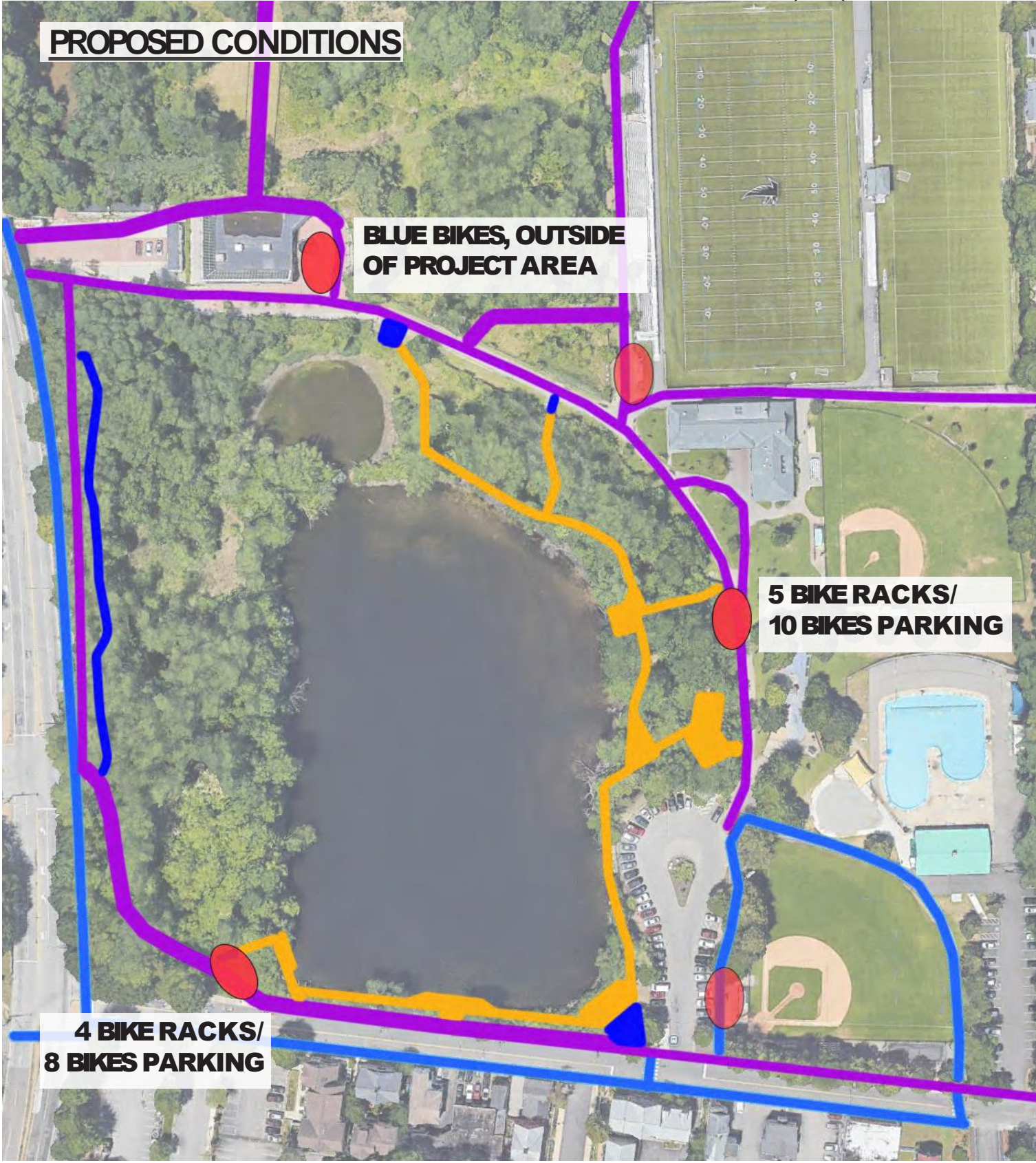
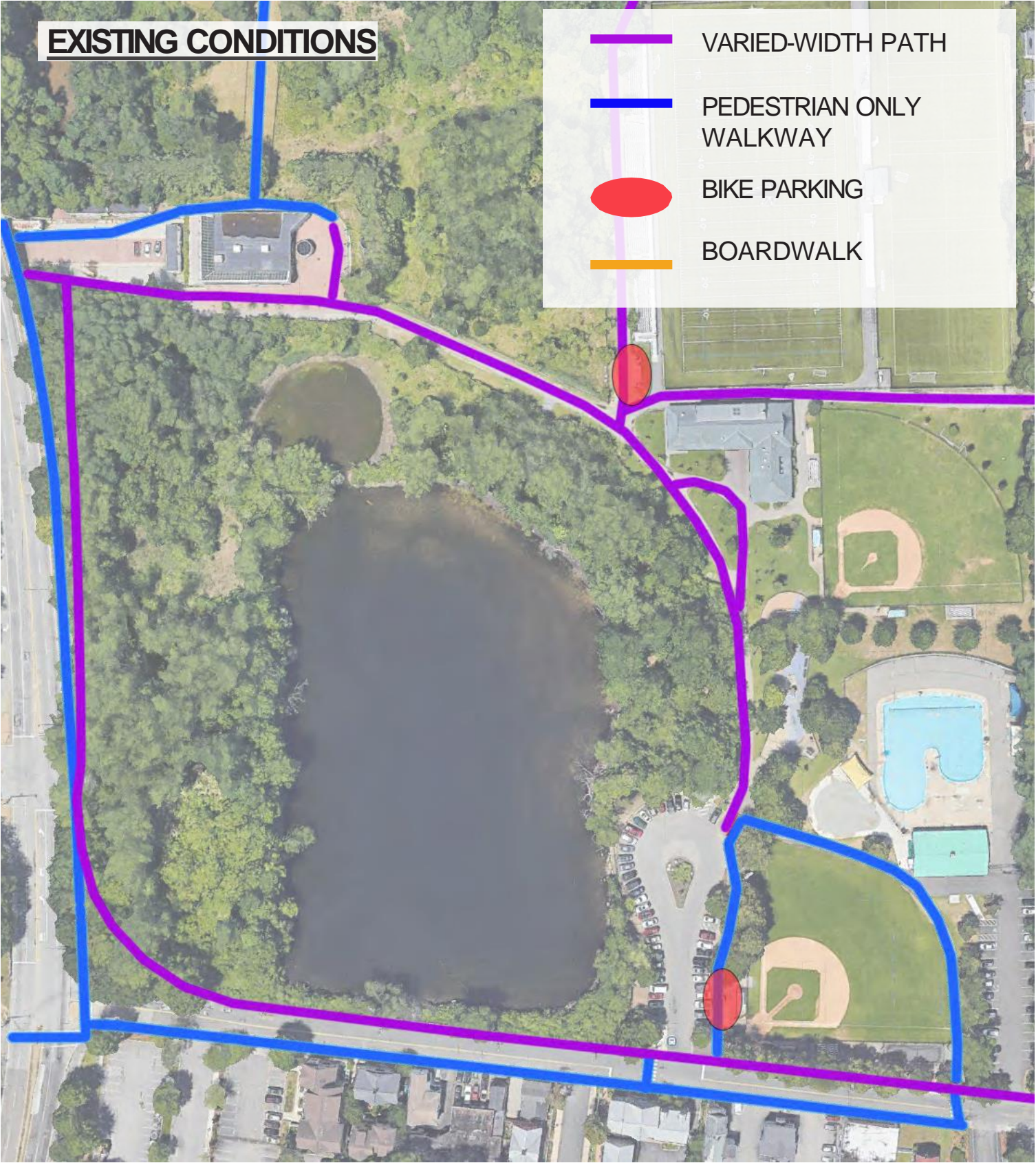
EXISTING BUS STOP

10-FOOT SIDEWALK
WITH 2-FOOT UTILITY
CORRIDOR

JERRY'S POND

CITY OF CAMBRIDGE

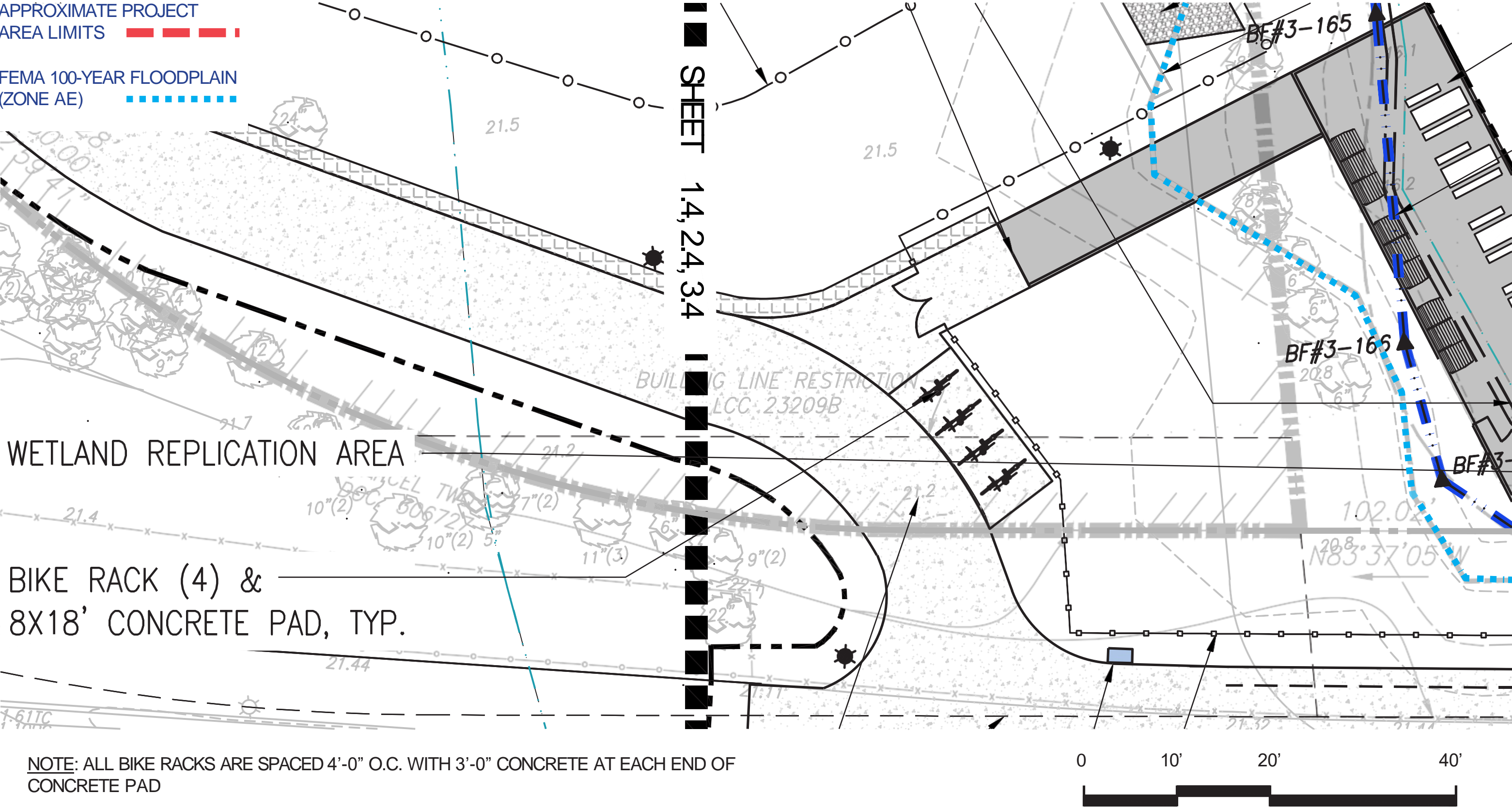




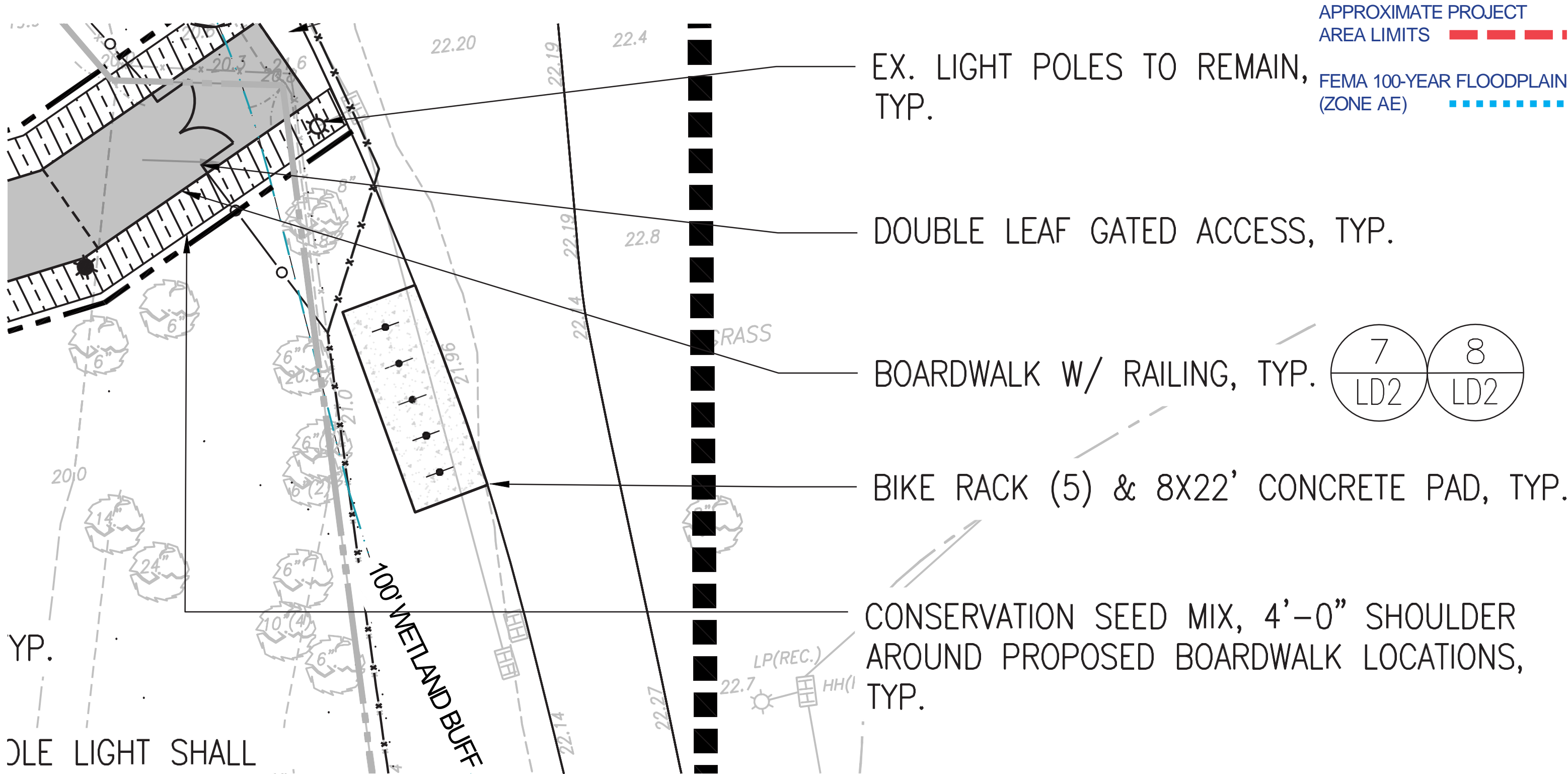
CIRCULATION & BIKE PARKING

APPROXIMATE PROJECT
AREA LIMITS

FEMA 100-YEAR FLOODPLAIN
(ZONE AE)



CIRCULATION & BIKE PARKING



COMMUNITY GATHERING SPACE AT WEST END OF RINDGE AVENUE



JERRY'S POND

CITY OF CAMBRIDGE

IQHQ

SUMCO
ECO-CONTRACTING

kzla

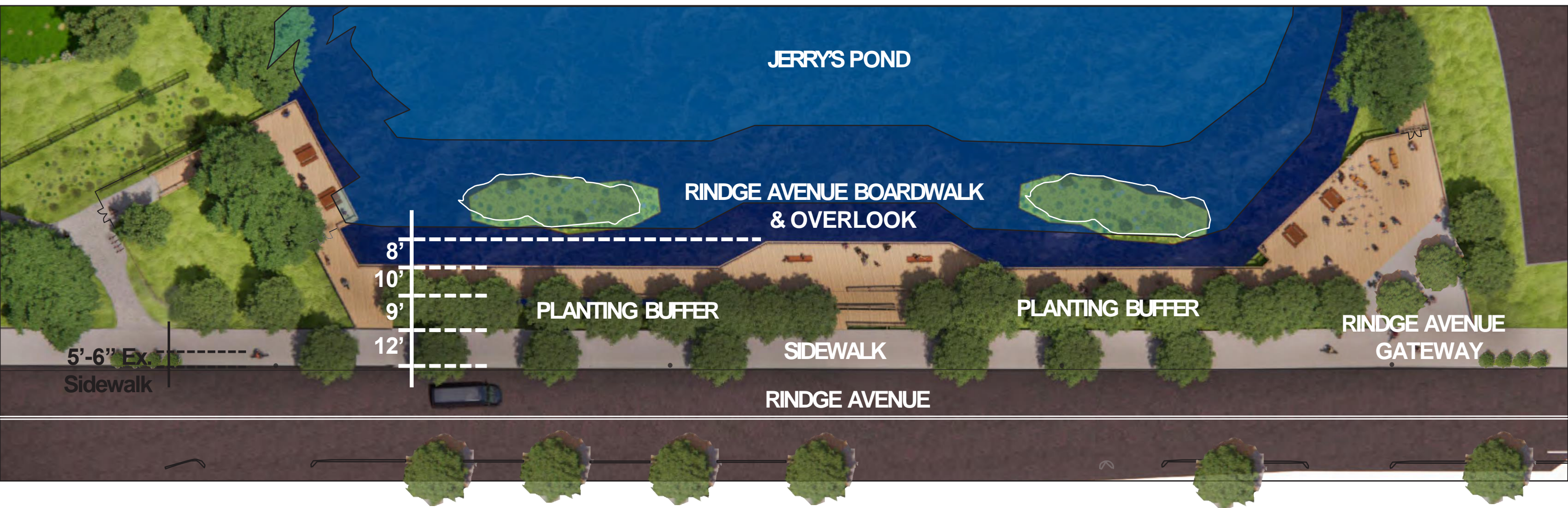
RINDGE AVENUE ENLARGEMENT

Added street tree's along sidewalk in 2 foot utility buffer

Added floating wetland

Added ADA Access ramp

- 33'-6" Feet of new public access & vegetation from Rindge Avenue curbline towards Jerry's Pond
- 300 Feet of universally accessible boardwalk (10 feet wide) paralleling Rindge Avenue
- Boardwalk is set low with vegetated buffer to provide separation from Rindge Avenue



JERRY'S POND

CITY OF CAMBRIDGE

IQHQ

SUMCO
ECO-CONTRACTING

kzla

BOARDWALK & OVERLOOK ALONG RINDGE AVENUE



BOARDWALK LOOKING TOWARDS RINDGE AVENUE ENTRY



JERRY'S POND

CITY OF CAMBRIDGE



RINDGE AVENUE ENTRY (SOUTHEAST CORNER)



**10-FOOT WIDE SIDEWALK
+ 2' UTILITY CORRIDOR**

**RINDGE AVENUE
GATEWAY**

JERRY'S POND

CITY OF CAMBRIDGE

IQHQ

SUMCO
ECO-CONTRACTING

kzla

BOARDWALK & FLOATING ISLAND FROM RINDGE AVENUE ENTRY

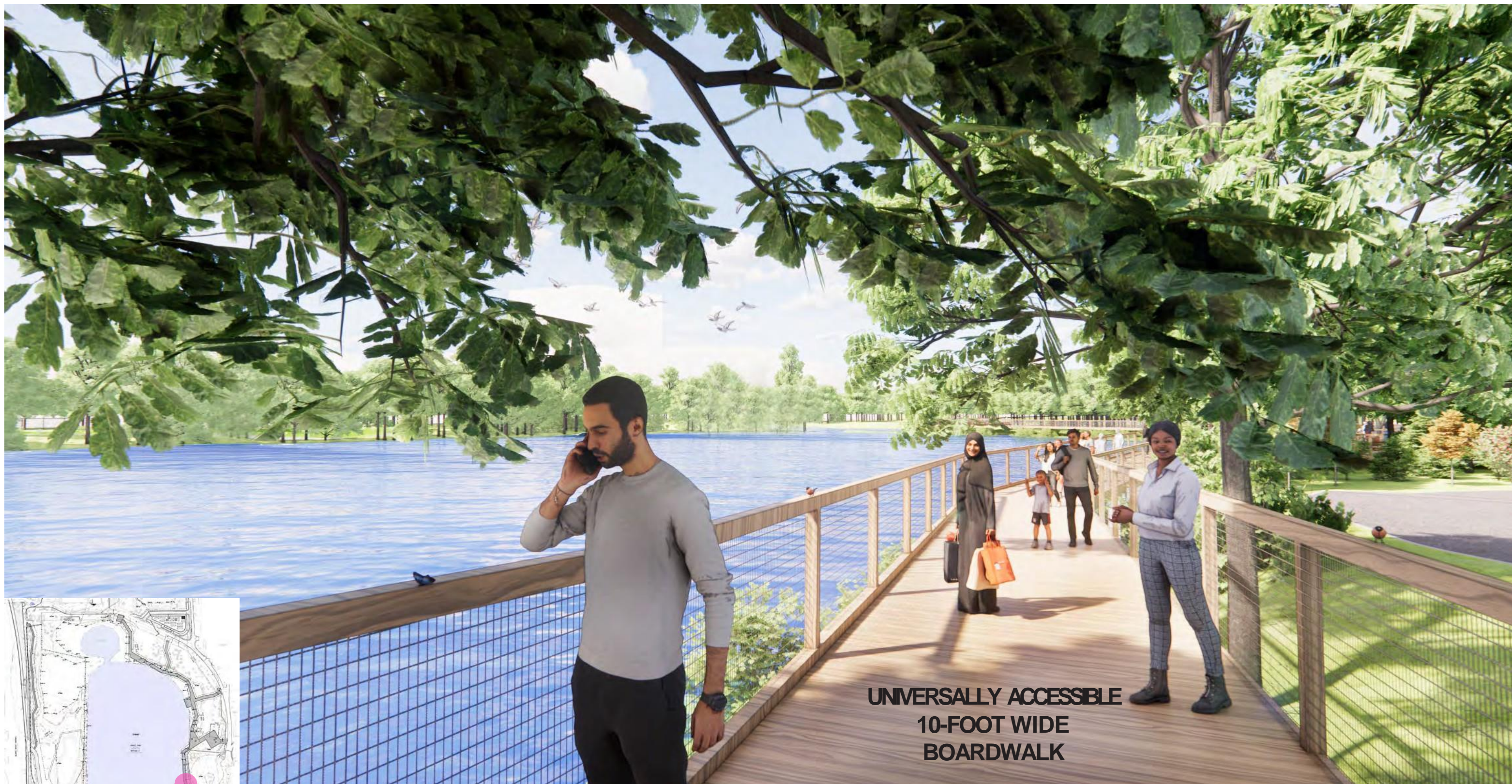


JERRY'S POND

CITY OF CAMBRIDGE



BOARDWALK ALONG EAST SIDE OF POND ON THE WAY TO JERRY'S DECK



**UNIVERSALLY ACCESSIBLE
10-FOOT WIDE
BOARDWALK**

JERRY'S POND

CITY OF CAMBRIDGE

IQHQ

SUMCO
ECO-CONTRACTING

kzla

JERRY'S DECK ENTRANCE



JERRY'S POND

CITY OF CAMBRIDGE



JERRY'S DECK & ECO-PAVILION



ECO-CENTER PAVILION

CONNECTION TO
LINEAR PATH



JERRY'S POND

CITY OF CAMBRIDGE



COMPENSATORY FLOOD STORAGE FROM THE SOUTHEAST CORNER

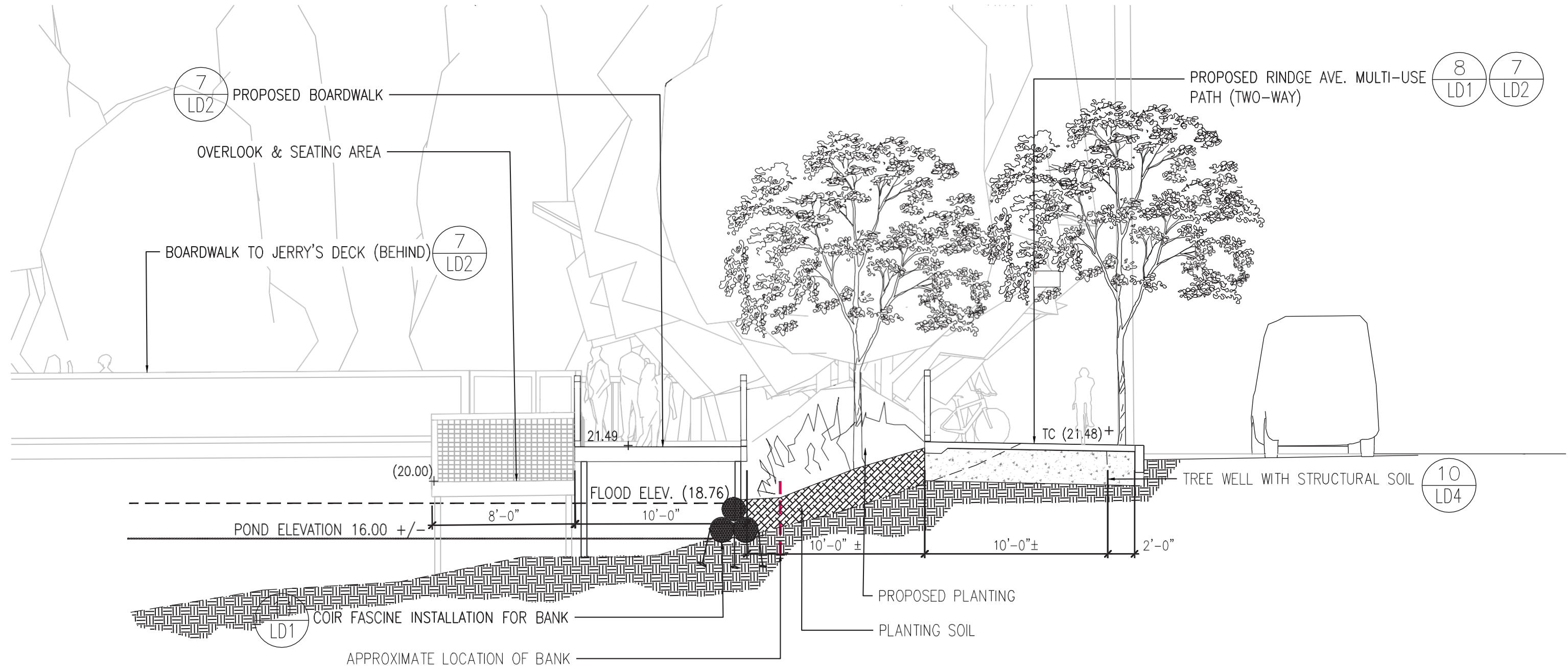


JERRY'S POND

CITY OF CAMBRIDGE

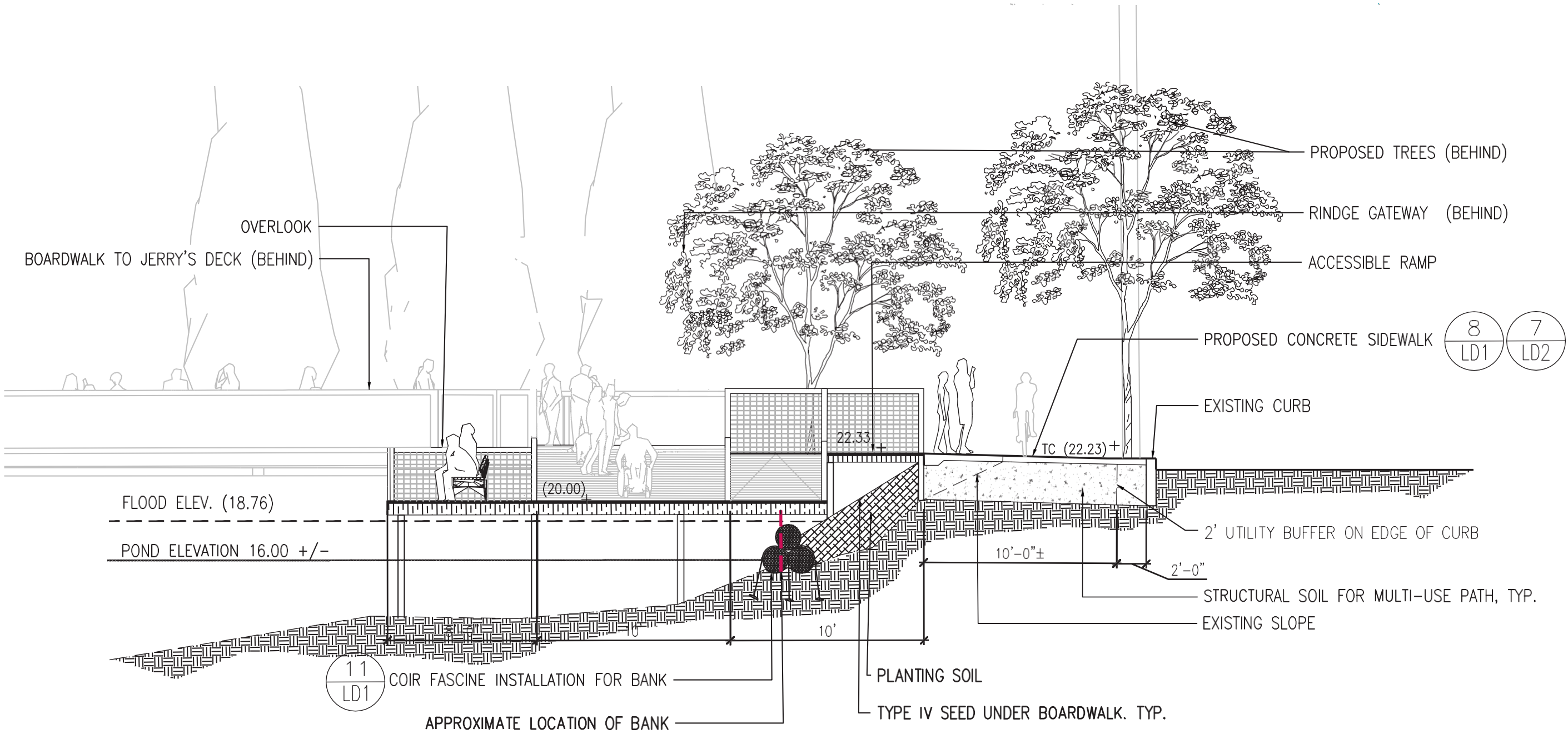


RINDGE AVENUE SECTION THROUGH BANK & DECK



01 A-AA' SECTION

RINDGE AVENUE SECTION THROUGH DECK & OVERLOOK



02 B-BB' SECTION