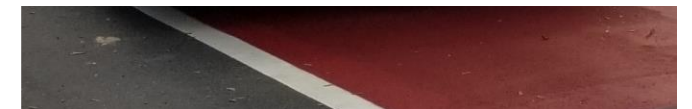
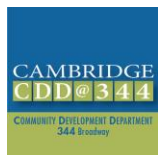


City of Cambridge

Net Zero Transportation Plan: Advisory Group Meeting #7

Wednesday, September 27, 2023





Welcome!

Check-in question: What is one thing that you've learned recently from your community/communities in Cambridge?

Meeting purpose:

- Welcome new members!
- Give feedback on ways to evaluate Plan strategies
- Outline principles for addressing equity in the planning process
- Discuss plans for broader community engagement

Evaluating how the Plan affects transportation equity





Overview of NZTP strategy evaluation framework

- What do you like? What might be missing?
- Could this framework be useful for evaluating potential strategies?

Thinking about the broader process





On process: 2 related questions

1. How can we assess whether the NZTP process makes planning more equitable?
2. How should we engage other community members as part of this process? How should we invite their input?



Draft principles for embedding equity in the NZTP process

An equitable process:

- **Is guided by community voices.**
- **Is transparent.**
- **Prioritizes underserved, underheard, and historically excluded groups of people.**
- **Reduces harm.**
- **Builds long-term relationships.**
- **Is accessible.**



What will the broader engagement process look like?

1. Advisory Group member-led engagement
 - Sharing surveys and other materials with their communities
 - Sharing insights back with the Advisory Group
2. Engagement led by the Community Engagement Team at the Community Development Department (CET@CDD) [more to come]
 - People who are members of six linguistic communities in Cambridge (Amharic, Arabic, Bangla, Haitian Creole, Chinese, and Spanish), and the American-born Black Community
 - Provide advice on the NZTP community engagement plans and assist with outreach
3. Public meetings and other opportunities for members of the public to engage



Overview of CET@CDD

- More on CET@CDD from Marlees West Owayda (Community Engagement Manager - City of Cambridge)
- *What questions do you have?*
- *How do you see the Advisory Group and CET@CDD working together?*
- *How can CDD staff and consultants support this engagement?*



Questions?

- Are these good principles? What is missing? What could we say better?
- Does this sound like a good approach to broader community engagement?

Wrap-up, public comment, & next steps





Public comment

- Public comments are welcome
 - Share thoughts in Zoom Q&A or verbally
 - To comment verbally, **raise your virtual “hand”** (or actual hand if in person)
 - Please limit your comments to **2 minutes** (we may reduce this time if the queue fills up)
- Please keep all comments...
 - **Relevant to the topics discussed today**
 - **Respectful**
 - **Focused on issues (not individuals)**



Planning upcoming conversations

Future topics that will be discussed with the AG:

- What strategies could form part of the NZTP?
 - What will our timeline for community engagement be?
 - How can communities beyond Cambridge learn from the NZTP process?
 - How can we learn from other cities that have faced similar challenges?
-
- *What other topics would you like to discuss?*



Next steps

- ✓ We'll share follow-up materials and a draft meeting summary
- ✓ Next meeting: **Wednesday, October 25 @ 8:45 AM***
- ✓ Others?

Check out question

- *What is one remaining question from today's discussion?*





Thank You