

City of Cambridge
Community Development Department

Pedestrian Committee Meeting

January 30, 2025



Meeting Agenda

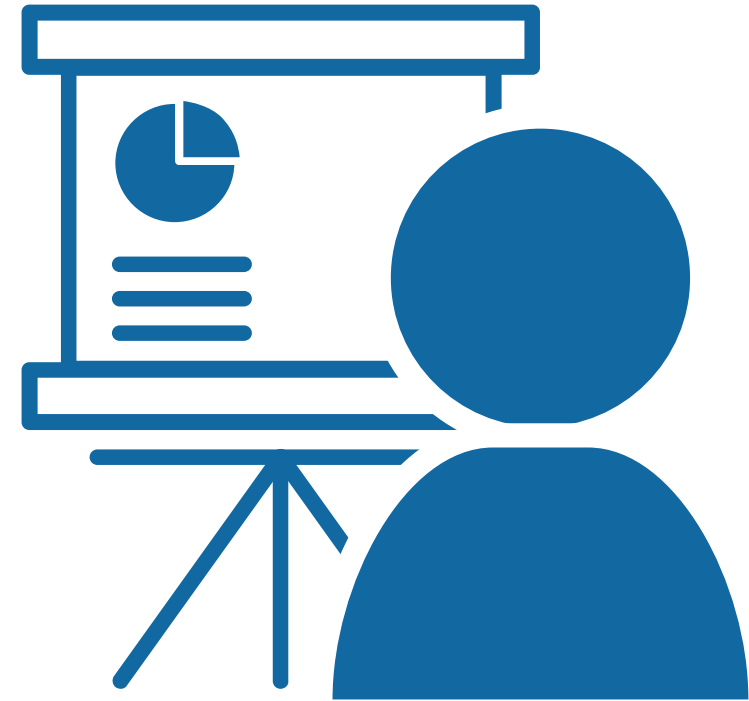
Agenda Review, Zoom Protocol, Introductions, Minutes (20 minutes)

Linear Park Pedestrian Detour (20 minutes)

City Snow Operations (30 minutes)

Other City, Committee Updates (15 minutes)

Public Comment (5 minutes)





Roll Call, Minutes

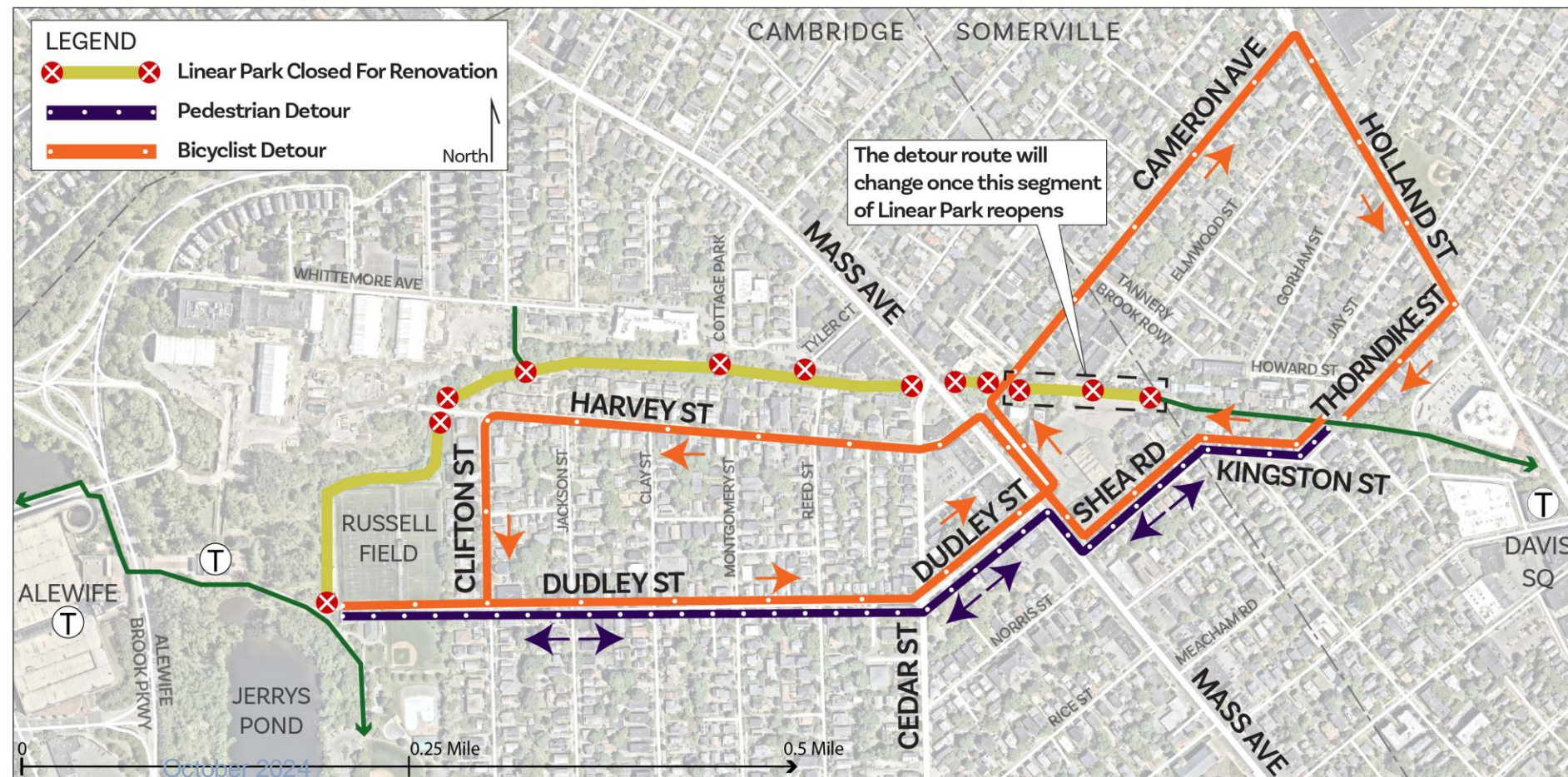


Linear Park Pedestrian Detour

LINEAR PARK & MULTI-USE PATH DETOUR

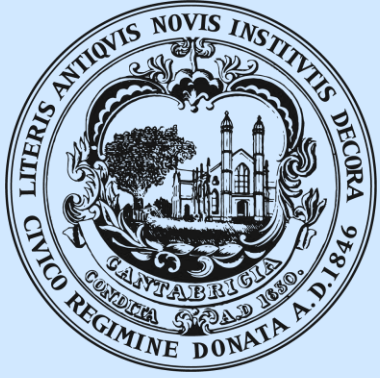
- Linear Park in North Cambridge will be closed for reconstruction starting in FILL IN, 2025
- This map shows the current signed detours. The detours will change when we complete construction from Cameron Ave to the Somerville border.

For more information or to sign-up for updates, scan the QR code or visit camb.ma/linearpark.





City Snow Operations



City of Cambridge Winter Operations





Agenda

1. 2023-2024 Summary
2. Historical Data
3. Weather Outlook
4. Storm Coordination
5. Parking Bans
6. Accessibility
7. Specialty Equipment
8. Anti-Icing/De-Icing
9. Cambridge Snow Center

2023-24 Season Event Summary

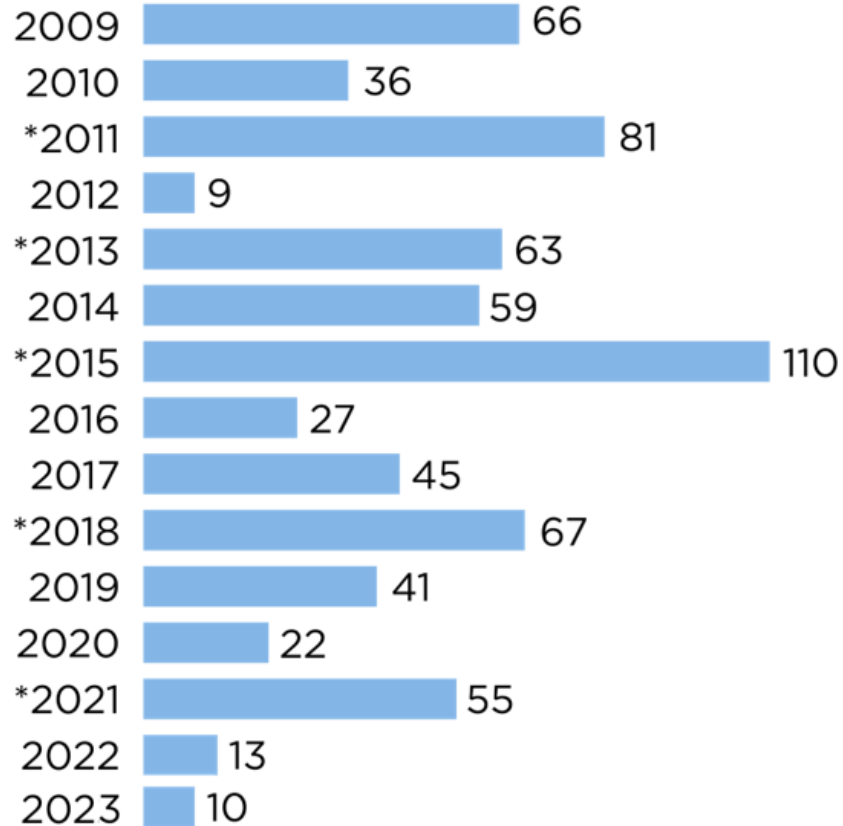
- 10.2" of snow
- 2691 tons of salt
- 9 salting events
- 2 plow events
- 0 hauling events



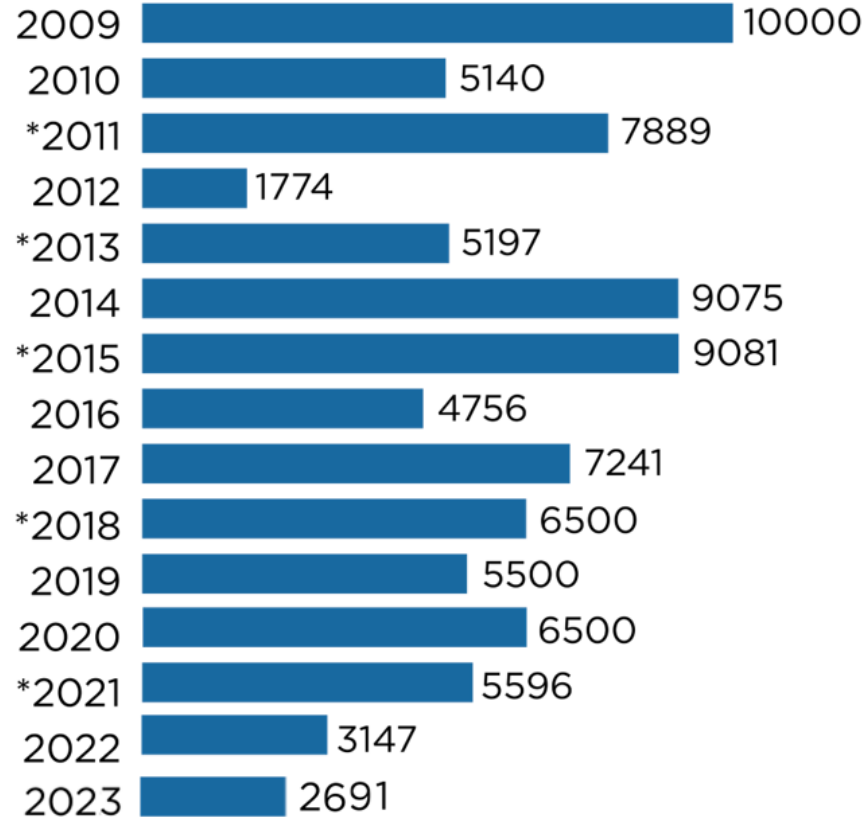
Historical Data

* Indicates a year where we have had at least one blizzard

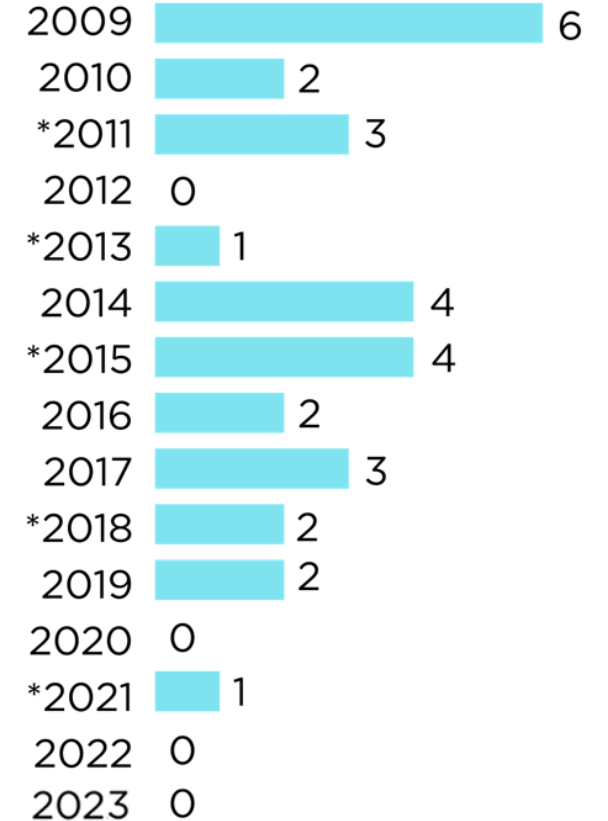
Snowfall (Inches)



Salt Tons



Number of Parking Bans



Averages

Snowfall: 46.93 inches

Salt Tons: 6006

Preparing for Winter Weather Outlook

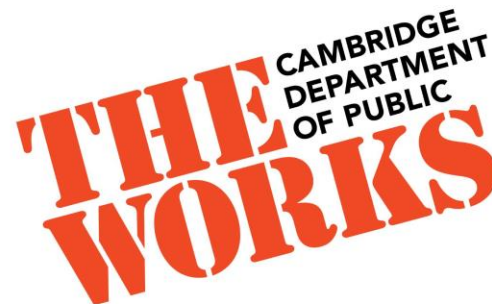


Precipitation Outlook

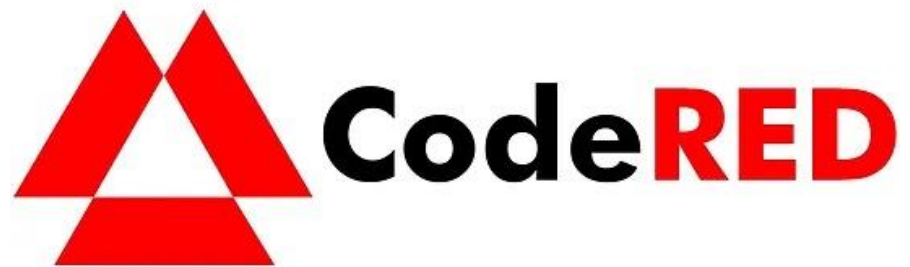
- Temperatures above normal across New England.
- Snowfall below normal for most of southern and central New England, could be above normal north.
- Not much in the way of precipitation across New England next 15-30 days if long range is correct.
- Potential for inside runners (storm track west of New England) higher than normal.

Citywide Storm Coordination

- DPW
- City Managers Office
- Police Department
- Fire Department
- Cambridge Public Schools
- Dept of Human Services
- Traffic Parking & Transportation
- Water Department
- Electrical
- Inspectional Services
- Emergency Communications



Department of
Human Service Programs



Parking Ban

- Declaring the ban
 - Notification and Communication
 - Snow Center
 - CodeRED
 - Social Media
- Towing Operations
 - Supervision
 - Coordination
- Street assessment
 - Traffic and DPW
- Lifting the Ban

Snow Emergency Parking

52 Oxford St
(Harvard)

65 Waverly St
(MIT)

First St Garage
(City)

Green St Garage
(City)

**Cambridge
Galleria** (Private)

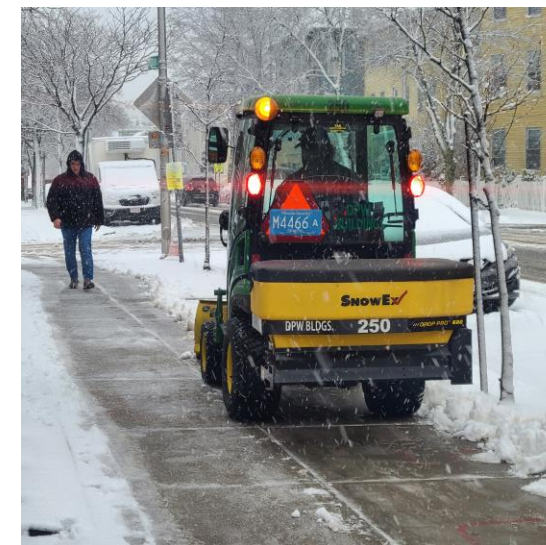
**One Kendall
Square Garage**
(Private)



Public Transportation Accessibility

Bus Stops/Ramps

- Cambridge Street
- Massachusetts Avenue
- Concord Avenue
- Mount Auburn Street
- Western Avenue
- River Street
- Huron Avenue
- Rindge Avenue
- Broadway
- Prospect Street
- Pearl Street
- Brookline Street
- Green Street
- Granite Street
- Aberdeen Ave
- Magazine Street
- Putnam Ave – Western to Brookline
- Bigelow Street
- Inman Street
- Webster Street
- Windsor Street
- Garden Street
- Main Street
- Kirkland Street
- Quincy Street
- Columbia Street
- Hampshire Street



Pedestrian Operations



30+ miles of City-Cleared Sidewalks/ Curb Ramps



Abutting schools, public buildings, public open space



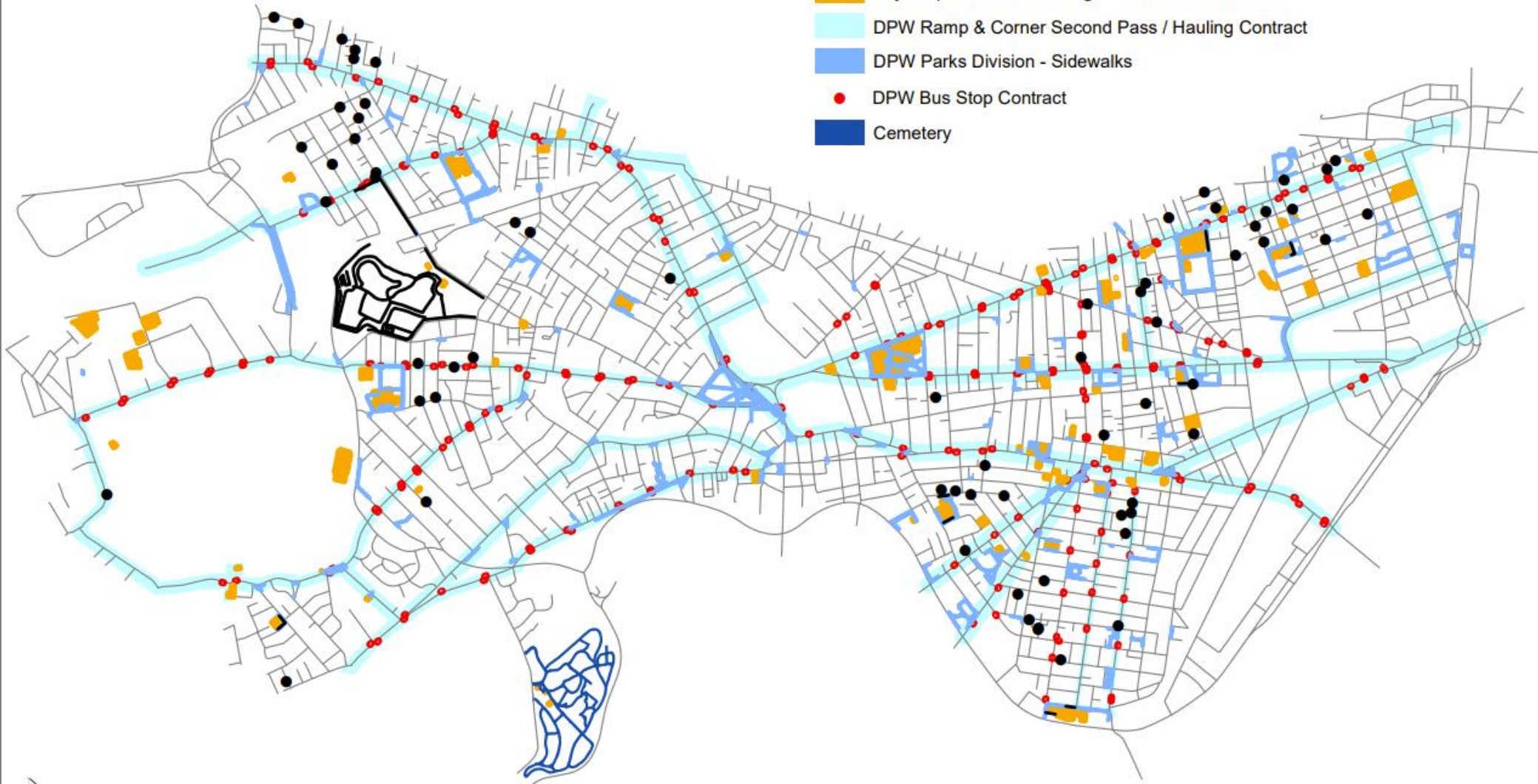
City-owned parking lots and garages



Residential exemption program

SIDEWALK SNOW REMOVAL 12/2024

- Exemption List (Old Data) 66 Locations
- Recreation Dept (Old Data)
- City Properties - All Frontages and Bike Racks
- DPW Ramp & Corner Second Pass / Hauling Contract
- DPW Parks Division - Sidewalks
- DPW Bus Stop Contract
- Cemetery



School/Public Safety Access



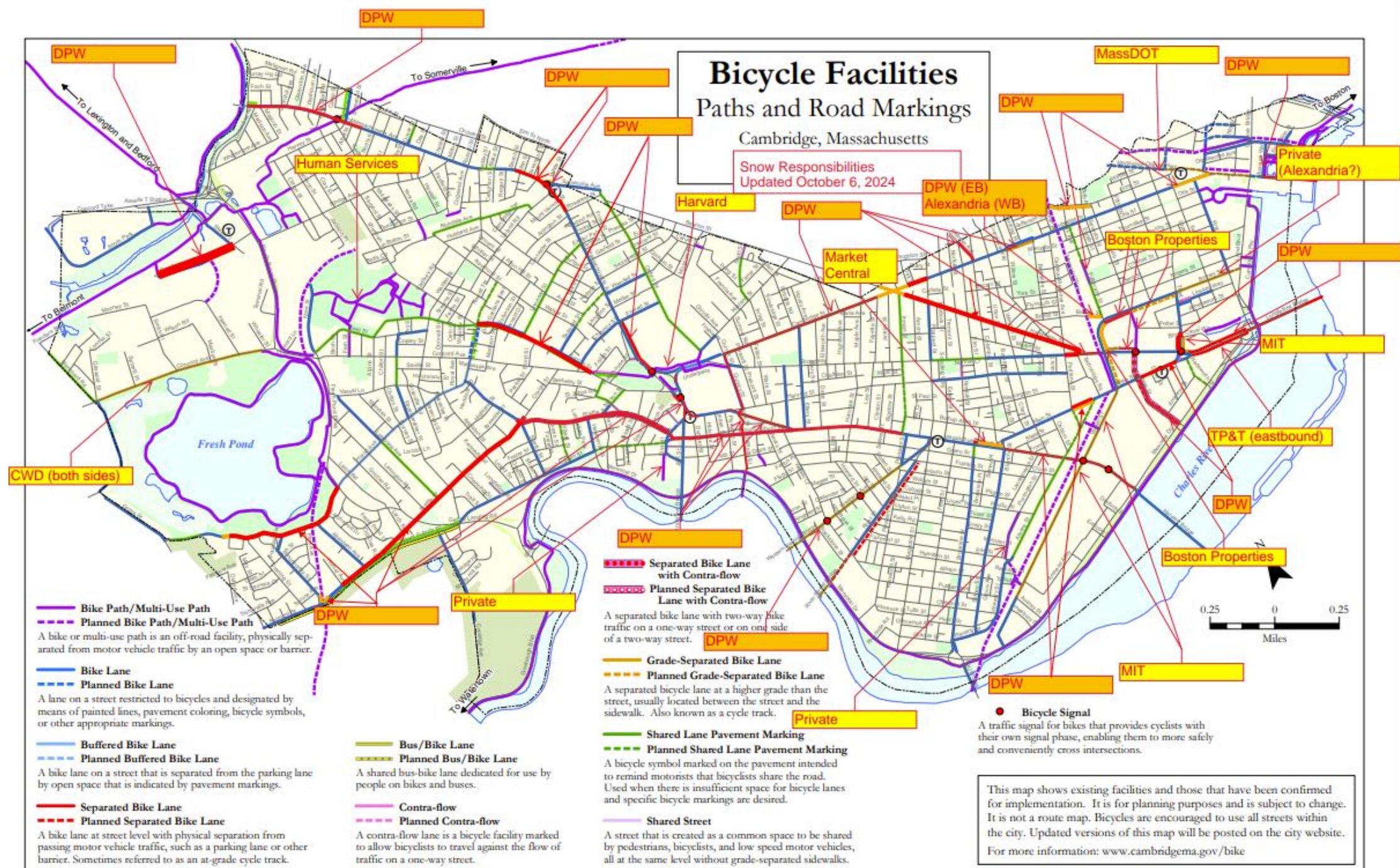
Protected and Raised Bike Lanes

- Challenging
- Timing
- Messaging
- Responsibility



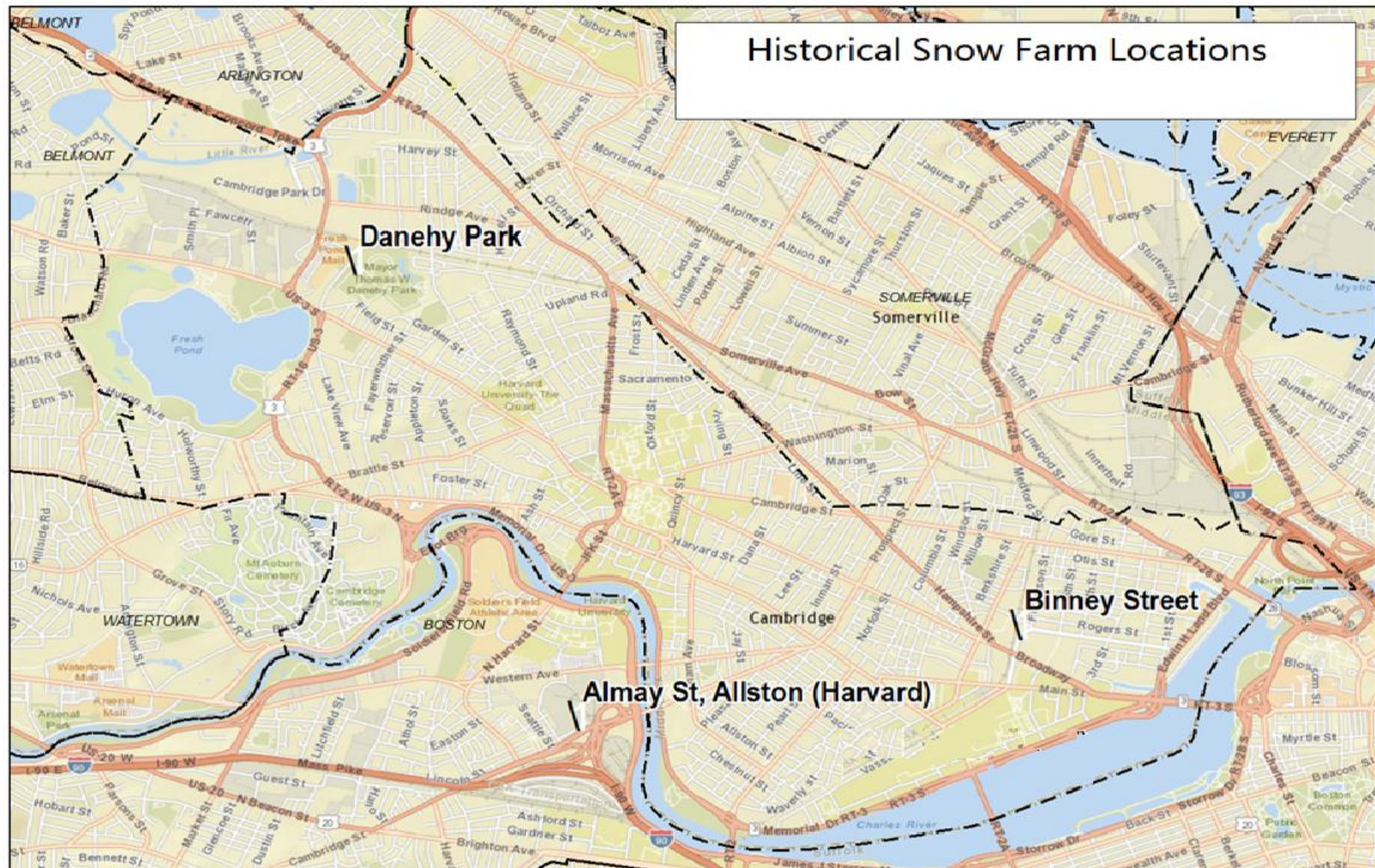
Bike Facilities and Snow Removal

- The number of bike facilities are increasing every year
 - Newest bike lanes on Mt Auburn St., Main St., Brattle St., Hampshire St., Cambridge St., Broadway
- Each has different needs in terms of snow removal
- In some cases, these facilities are part of “quick build” projects and present challenges in terms of maintenance during snow season
- Snow removal in bike facilities is a shared responsibility between
 - DPW
 - DHSP
 - TP&T
 - Private Developments
 - Universities



Snow Hauling







Specialty Equipment

Sidewalk/Bike Lanes



- Holder sidewalk tractor
- Wacker Neuson sidewalk tractor
- Multihog tractor
- Bobcat skid steer



Ticketing/Fines

Snow Season	# of Complaints Received
2016-2017	1068
2017-2018	933
2018-2019	591
2019-2020	695
2020-2021	758
2021-2022	970
2022-2023	223
2023-2024	403
Total:	5641

Snow Season	# of Citations Issued
2016-2017	546
2017-2018	166
2018-2019	210
2019-2020	326
2020-2021	223
2021-2022	274
2022-2023	83
2023-2024	188
Total:	2016

Payments made on tickets within 6 months of issuance is approximately 50%



Challenges

- Continuity of Services
- Dead Ends
- One-way Streets
- Handicap Parking
- Space savers





Anti-Icing & De-Icing





Anti-Icing with Brine

The brine solution is applied in liquid form to the roadway before anticipated snow or ice and prevents snow and ice from bonding with the street surfaces. Unlike granular salts which can bounce off roadways or get stuck on top of snow and ice, brine begins working immediately once it comes into contact with precipitation.



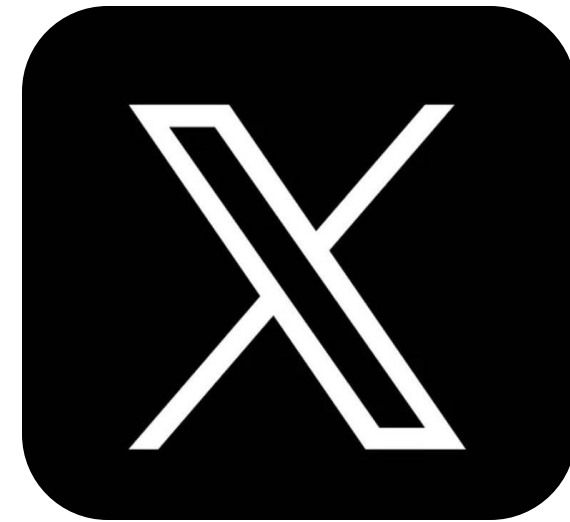
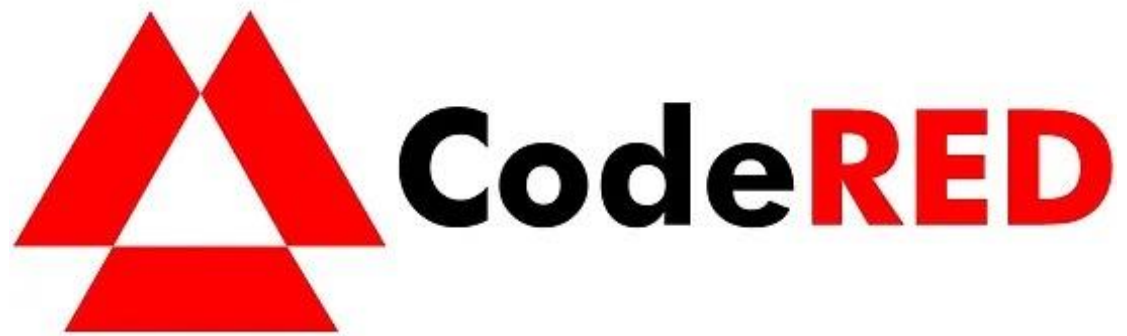
De-Icing

During and after a storm, we work to de-ice the roads, bike lanes, and sidewalks. We remove the ice and snow from the surface of the road by plowing and applying additional materials to the surface of the roads. This helps to loosen the ice and snow from the pavement, while also lowering the freezing point of water.



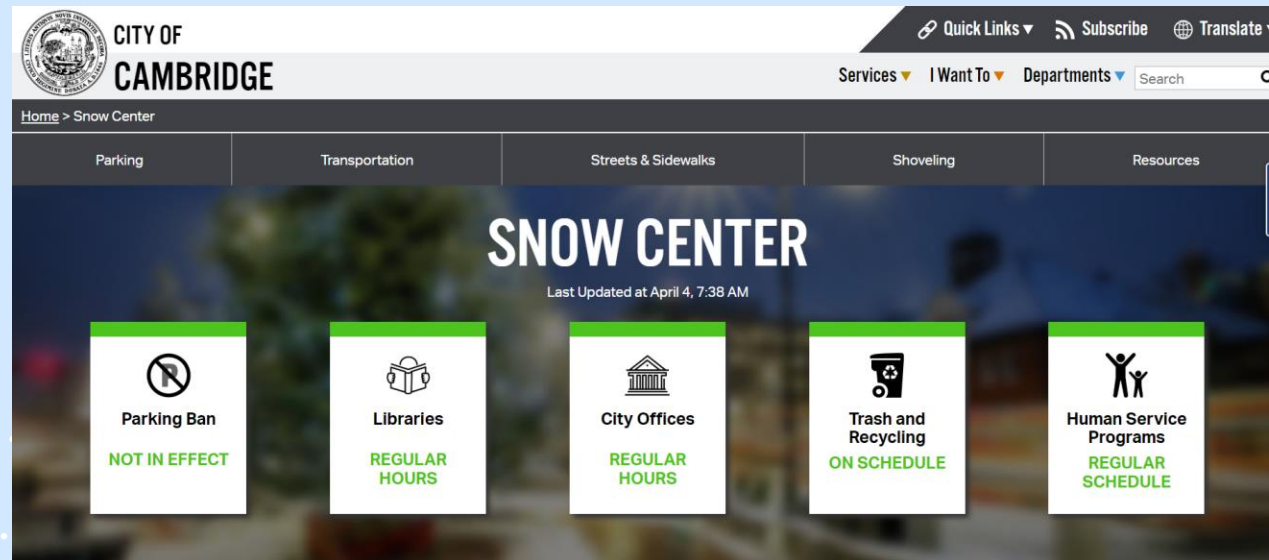
Materials Used

- Rocksalt
- Magnesium Chloride
- Pre-mix



Visit Cambridge Snow Center for More Updates

www.cambridgema.gov/snow



Questions?





TP&T Updates

Andreas Wolfe (TP&T), awolfe@cambridgema.gov

These projects are managed by TPT staff

1. Broadway (Portland St to Quincy St)

- Section A (Portland to Columbia) first
- Working Group applications are closed. Group to begin meeting in February
- Recording available soon: Community Meeting 1 on January 28th, Zoom
- Open Houses February 4th and 6th

2. Aberdeen Ave

- Design and outreach complete.
- Installation to begin in Spring 2025.

3. Cambridge St (Oak St to Second St)

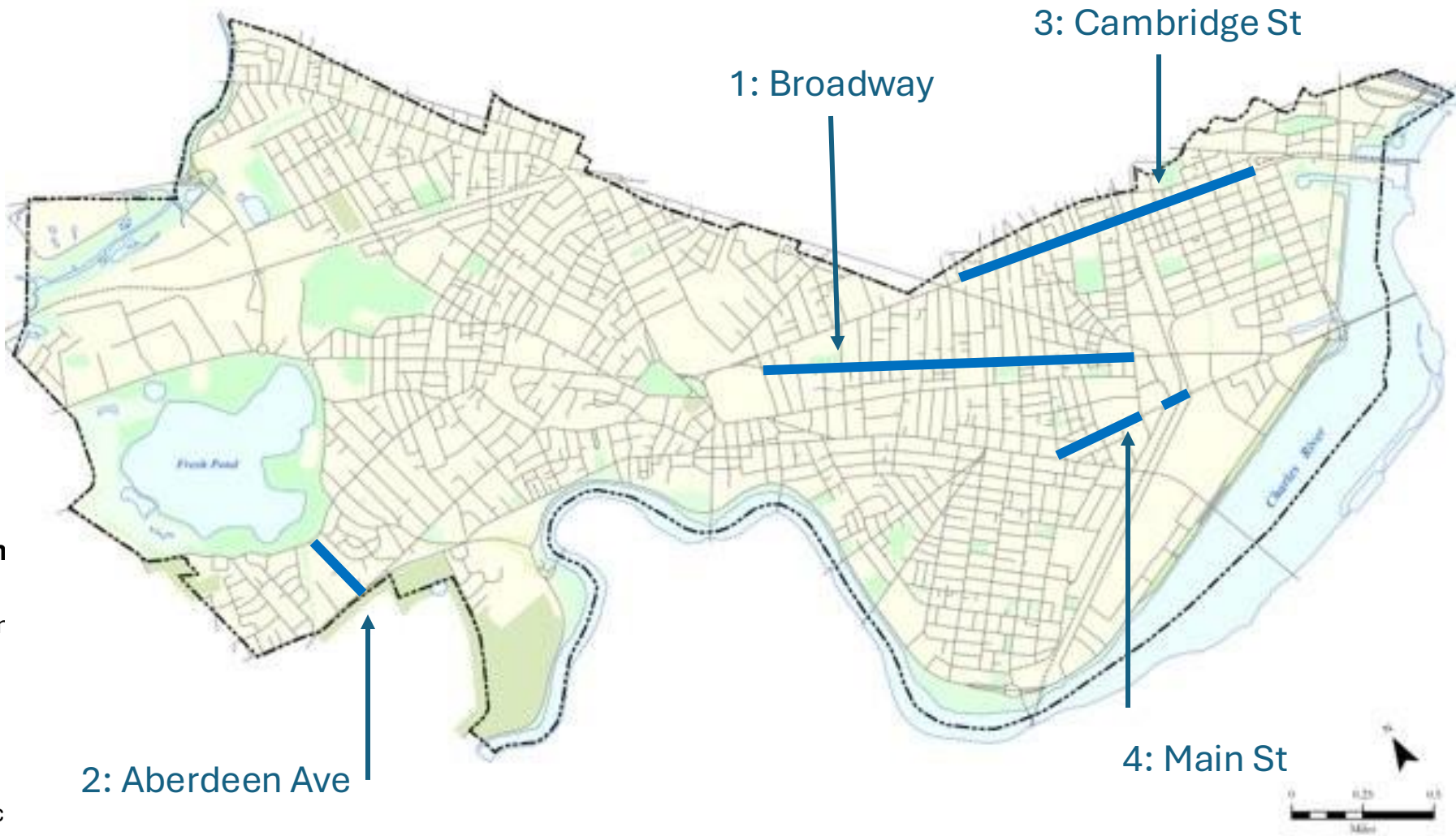
- Section A (Oak to Willow) first
 - Feedback survey closes January 31st.

4. Main St (Central Sq to Portland St, Tech to Albany St)

- Working on final design and public engagement opportunities for Spring 2025
- Installation to begin Spring/Summer 2025

5. Citywide

- Map of all upcoming CSO projects at www.cambridgema.gov/cyclingsafetyordinanc





DPW Updates

Melissa Miguel (DPW), mmiguel@cambridgema.gov



CDD Updates



Upcoming Committee Meetings

- Transit Advisory Committee – February 6
- Bicycle Advisory Committee – February 12 – TBC
- Joint Meeting of Committees – February 19 – TBC
- Pedestrian Committee – February 27 – TBC



Upcoming Meetings + Activities

- Broadway Safety Improvement Project Open House
 - February 4 4-6 p.m. – Fletcher-Maynard Academy Gymnasium
- Planning Board Meeting
 - February 4 6:30 p.m. Online
 - Town-Gown Presentation / [Reports online](#)
- Broadway Safety Improvement Project Open House
 - February 6 6-8 p.m. – City Hall Annex



More Upcoming Meetings + Activities

- Adaptive Cycling Open House
 - February 20 - 3:30 p.m.
 - Spaulding Cambridge Cullinane Center, 1575 Cambridge St
- Mass Ave Planning Study Working Group
 - February meeting to be confirmed
 - March meeting to be confirmed



Public Comment



Thank You