



**CITY OF
CAMBRIDGE**

Department of
Transportation

Welcome to the Cambridge Pedestrian Committee

May 22, 2025, 6:00 p.m. – 8:00 p.m.

Today's Agenda

May 22,
2025

6:00 PM

Agenda, welcome, Zoom, minutes (2/27, 3/27)

6:05

City and Committee project updates

- Department of Transportation, Transportation Planning (Nick Schmidt)
- Department of Transportation, Streets Management (Mohamed Hammad)
- Department of Public Works (Melissa Miguel)

6:25

Subcommittee progress

- Safety Study of the City (Maryann Quinn, Jenny Turner-Trauring, Debby Galef, Sean Peirce, Thomas Marsh)
- Support Net Zero Transportation Plan (Janet)
- “Camberville” Open Streets (no members)

7:35

2024 sidewalk riding data

7:55

Public comment

Why We're Here

“The Committee is organized to work to improve conditions for walking in the City of Cambridge, to promote walking as a means of transportation, and to improve safety conditions for pedestrians.”

Pedestrian Committee Bylaws, updated 2021

The Pedestrian Committee meets monthly.

- The **purpose** is to get feedback from appointed members of the Committee, the City’s “community experts” on pedestrian transportation issues
- The **outcome** is an understanding by City staff of the Committee’s consensus on priorities and reactions to street projects and development proposals
- The **process** to achieve that outcome includes presentations by Committee members and City staff, discussion following presentations, and a public comment period

Who We Are

Citizen Representatives

- *Chair (vacant)*
- Robin Bonner, *Vice Chair*
- *Secretary (vacant)*
- Alexandra Hallowell
- Bernhard Nickel
- Debby Galef
- Janet Stein
- Jeannine Powers
- Jenine Turner-Trauring
- Kevin Leckey
- Logan Read
- Maryann Quinn
- Michael McGowan
- Sean Peirce
- Thomas Marsh
- Xander Mitchell

Dept. Representatives

- Nick Schmidt, *Transportation, Facilitator*
- Quinn Murphy, *Transportation*
- Mohamed Hammad, *Transportation*
- Melissa Miguel, *Public Works*

Taking Notes

The Pedestrian Committee lacks a Secretary. Thank you Committee members for volunteering to take notes.

2025 Meeting Date	Notetaker
January 30	Alex Hallowell
February 27	Janet Stein
March 27	Debby Galef
<i>April 24</i>	<i>Cancelled</i>
May 22	Maryann Quinn
June 26	Thomas Marsh
July 31	Volunteer needed
August 28	Volunteer needed
September 25	Jenny Turner-Trauring
October 30	Sean Peirce
November 20	Volunteer needed
December 18	Volunteer needed

Minutes

February 27, 2025, meeting

March 27, 2025, meeting

Transportation Meetings and Announcements

Upcoming Committee Meetings (by date)

- Transit Advisory Committee – June 4 [TENTATIVE]
- Bicycle Committee – June 11
- Joint Meeting of the Committees – June 18
 - [Vassar Street Safety Improvement Project](#)
- Pedestrian Committee – June 26

Upcoming Public Meetings (by date)

- Chetwynd Road Reconstruction Project (DPW)
 - June 4, 4:00-6:00 PM – On-site community meeting #3

Announcements

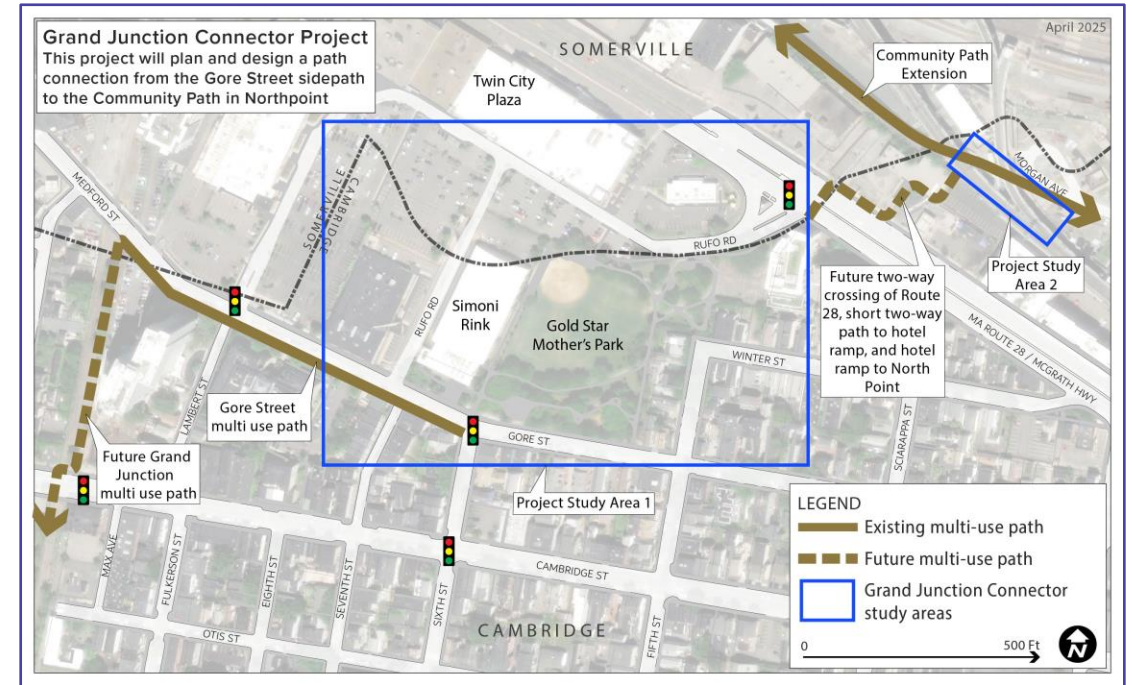
- Pedestrian Committee resignations since March meeting:
 - Jesus Armenta
 - Sandy Goldberg, *Chair*
 - John Leo
- Cambridge Public Health Department and MAPC launched a Physical Activity Assessment to make physical activity more accessible.
 - [Click here to complete a short survey](#)
- Waymo, a company providing autonomous ride hailing services in other US cities, is performing short-term research on streets in the greater Boston area ([news link](#)).
 - Testing will include Cambridge streets
 - Testing started May 19 and will take approximately six weeks
 - Vehicles will not operate in autonomous mode
 - Safety drivers will always operate vehicle during testing

Cambridge Department of Transportation Project Updates

Transportation Planning Division Projects

Bicycle Count Program

- 2024 [bicycle count data](#) now available, which includes sidewalk riding data (we will review these data later in this meeting)
- Linear Park Redesign
 - Bids due in June
 - Anticipating construction activities beginning in July
- Grand Junction Connector
 - Project launched!
 - [View project website here](#)



Street Management Division Projects

1. **Broadway (Portland St to Quincy St)**

- [Paving work began on Section A \(Columbia to Portland\)](#)
- Next Project Working Group meeting took place May 20 and focused on Sections B and C (Columbia to Quincy)

2. **Aberdeen Ave**

- Mt Auburn crossing island complete
- [Paving work began next week](#); installation late May

3. **Cambridge St (Oak St to Second St)**

- Oak St to Prospect St installed, outdoor dining maintained
- Prospect St to Willow St open house TBD

4. **Main St (Central Sq to Portland St, Tech Sq to Albany St)**

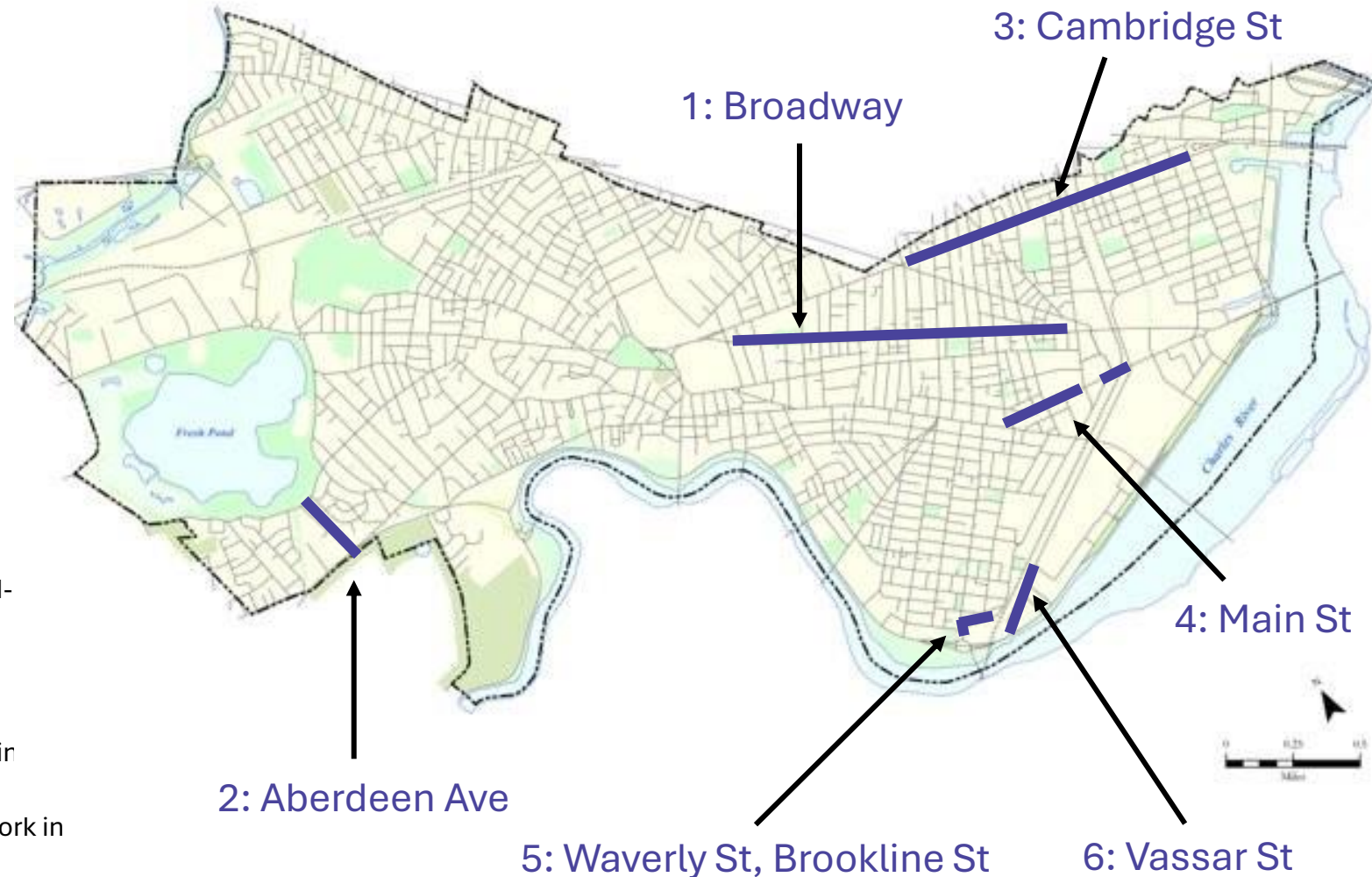
- [Paving work began](#)
- Final community meeting and open houses took place mid-to-late April. Materials posted to the website.
- Installation to follow paving, early June

5. **Waverly St, Brookline St**

- Adding buffers and flex posts to sections of the street leading from BU Rotary. [Click here for final plans](#).
- [Paving work and striping began](#). Ties into recent/ongoing work in rotary by DCR.

6. **Vassar St (Memorial Drive to Amherst Alley)**

- 25% plans posted online, includes crossing island at Amesbury St
- Installation late summer 2025



Map of all upcoming Cycling Safety Ordinance projects at
www.cambridgema.gov/cyclingsafetyordinance

Cambridge Department of Public Works Project Updates

Public Works Projects

1. Harvard Square Kiosk and Plaza

- Kiosk ribbon cutting: Friday, May 30, 10 a.m. – 12 p.m.
- Ongoing plaza work through November 2026

2. River St (Memorial Dr to Mass Ave)

- Ongoing utility work
- Full-depth roadway reconstruction begins June:
 - River St: Mass Ave to Franklin St
 - Green St: River St to Pearl St
 - Magazine St: Green St to Franklin St

3. Mass Ave Partial Construction

- Linnaean-Waterhouse median removal has begun
- Water main work to start in June



Public Works Projects, cont.

4. Chapter 90 Contracts 24 & 25

- [Elm Street](#) – sidewalk work remains (Hampshire St to city line)
 - Final paving to follow
- [Dodge Street](#) – completed this week
- [Chestnut St](#) – brick sidewalk work remains
 - Some concrete sidewalk work remains
 - Raised intersection at Magazine; ~1 week remains
 - Final paving early summer 2025
- [Maple Ave](#) – curb and sidewalk work
- [Dana St](#) – water main work

5. Chapter 90 Contract 26

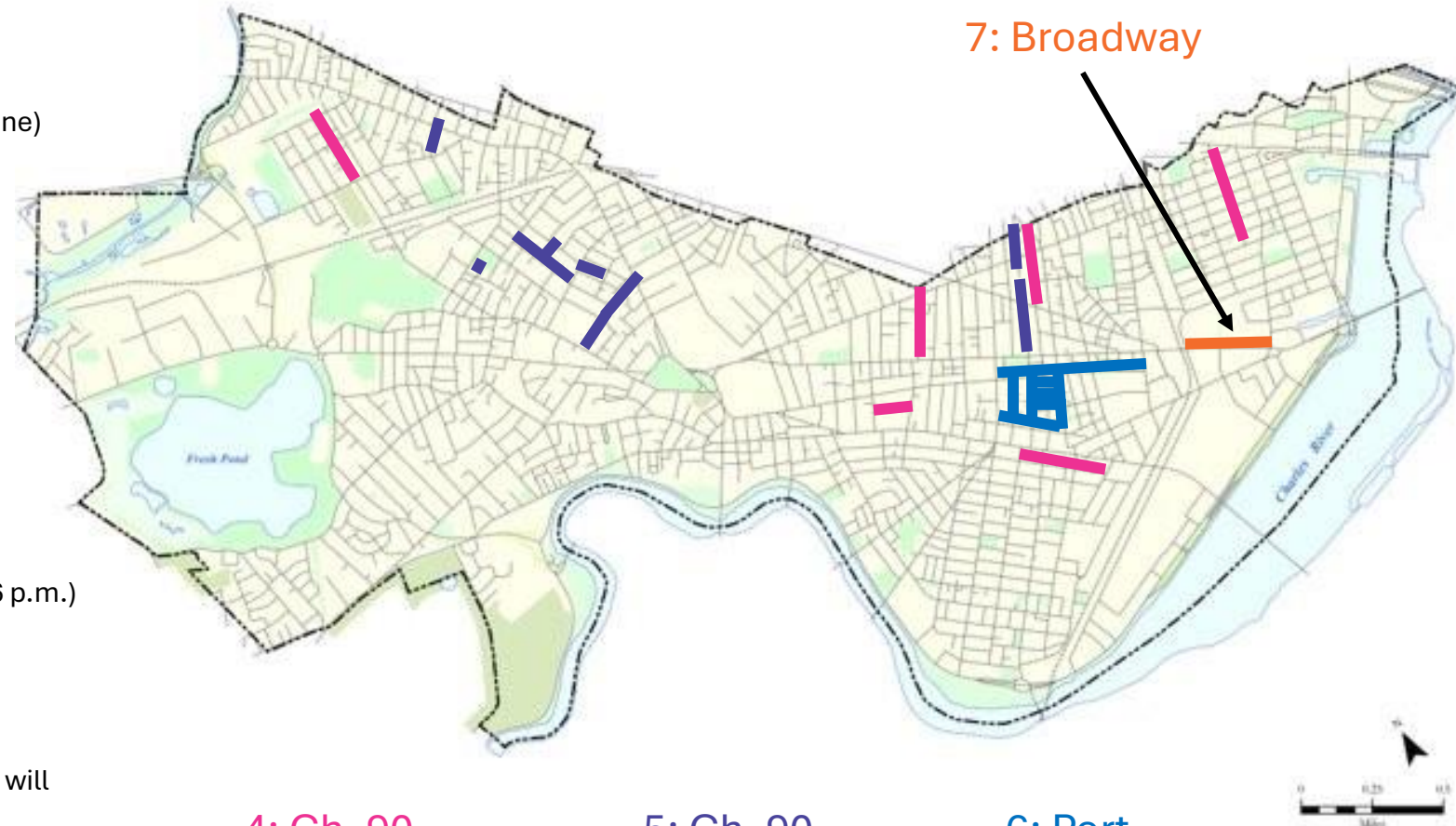
- [Chetwynd Rd](#) – [On-site Community Meeting #3](#) (June 4, 4-6 p.m.)

6. Port Infrastructure Improvements

- No major update

7. Broadway (Galileo Galilei to Third St)

- Ongoing utility work requiring two-way separated bike lane will continue through 2026



4: Ch. 90
Contracts 24/25
(magenta streets)

5: Ch. 90
Contract 26
(purple streets)

6: Port
Infrastructure
– Phase 1
(blue streets)

Subcommittee Progress Updates

6:25-7:35 PM

Here's Where the Committee Left Off

- Brainstormed three subcommittees:
 - Safety Study of the City
 - Support Net Zero Transportation Plan
 - “Camberville” Open Streets
- Defined the purpose, outcome, and process for each subcommittee
- Identified subcommittee volunteers
- Committed to advancing subcommittee work and reporting back today

Safety Study the City

Purpose <i>Why this topic?</i>	Walking in Cambridge is generally good, but many walks are negatively affected by a particular trouble spot
Outcome <i>What is the end goal / deliverable?</i>	An inventory of trouble spots to share with City staff to improve safety and efficiency of walking in the city
Process <i>How will the subcommittee get there?</i>	Solicit input from committee members on locations and challenges. Systematic review and improvement of trouble spots. Flag locations and challenges with City staff. Track outcomes.
Volunteers	Maryann Quinn, Jenny Turner-Trauring, Debby Galef, Sean Peirce, and Thomas Marsh


Support Net Zero Transportation Plan

Purpose <i>Why this topic?</i>	Combining forces on shared priorities stemming from the Net Zero Transportation Plan
Outcome <i>What is the end goal / deliverable?</i>	Letter from the Pedestrian Committee to the City Council in support specific actions / goals / objectives within the Net Zero Transportation Plan
Process <i>How will the subcommittee get there?</i>	Nick to coordinate with Stephanie to identify latest actions / goals / objectives for subcommittee, understand her perspective on how to be most helpful. Review and prioritize actions / goals / objectives.
Volunteers	Janet Stein

“Camberville” Open Streets

Purpose <i>Why this topic?</i>	
Outcome <i>What is the end goal / deliverable?</i>	
Process <i>How will the subcommittee get there?</i>	
Volunteers	

Next Steps

- Achieve full participation by entire Pedestrian Committee
 - Identify next steps for each subcommittee
 - Report back at the June 26 meeting
 - Discuss desired structure (meeting start, meeting length, project updates, etc.)
- 

Committee Members Who Have Volunteered for a Subcommittee (thank you!)

Maryann Quinn, Jenny Turner-Trauring, Debby Galef, Sean Peirce, and
Thomas Marsh, Janet Stein

2024 Sidewalk Riding Data

7:35-7:55 PM

About this Presentation

- What is being shared with the Pedestrian Committee?
 - What sidewalk riding is and why it is important
 - How Cambridge tracks sidewalk riding
 - Sidewalk riding trends over time
- What feedback would be helpful for the City?
 - What are your lived experience on this topic?
 - Do you have recommendations on how the City could better collect and report these data?
 - Do you find that bicycle projects encourage bicyclists to ride in the street or bike lane and not the sidewalk?

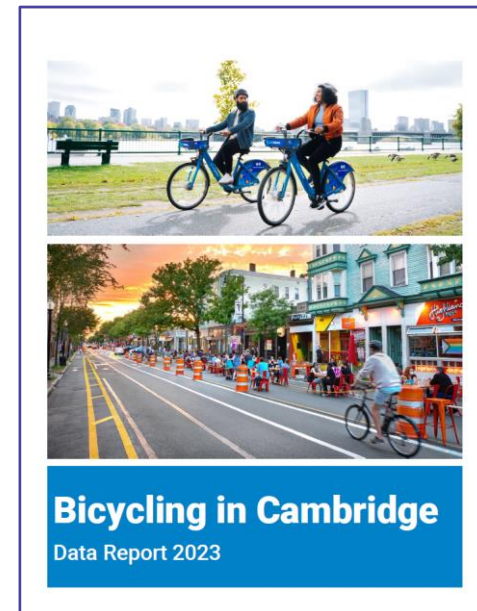
Sidewalk Riding 101

Sidewalk riding can give clues about where streets and intersections may be uncomfortable, have long delays, or don't align with where people want to go

- What is sidewalk riding?
 - Riding a bicycle on the sidewalk instead of the street or bike lane
- Why do people ride on the sidewalk?
 - People may not feel safe riding in the street or unprotected bike lane, or may be accessing a destination
- Is sidewalk riding legal in Cambridge?
 - Yes, both in [State law and City traffic regulations](#), but not in [Central Square](#), [Harvard Square](#), [Huron Village](#), [Inman Square](#), or [Somerville Avenue & Massachusetts Avenue \(Russell St to Wendell St\)](#)
 - Bicyclists must yield to pedestrians and travel at walking speed
- Does Cambridge track sidewalk riding? Why?
 - Yes, at certain locations as part of the biennial [citywide bicycle count program](#), which also counts micromobility devices (e.g., scooters, skateboards, unicycles, etc.)

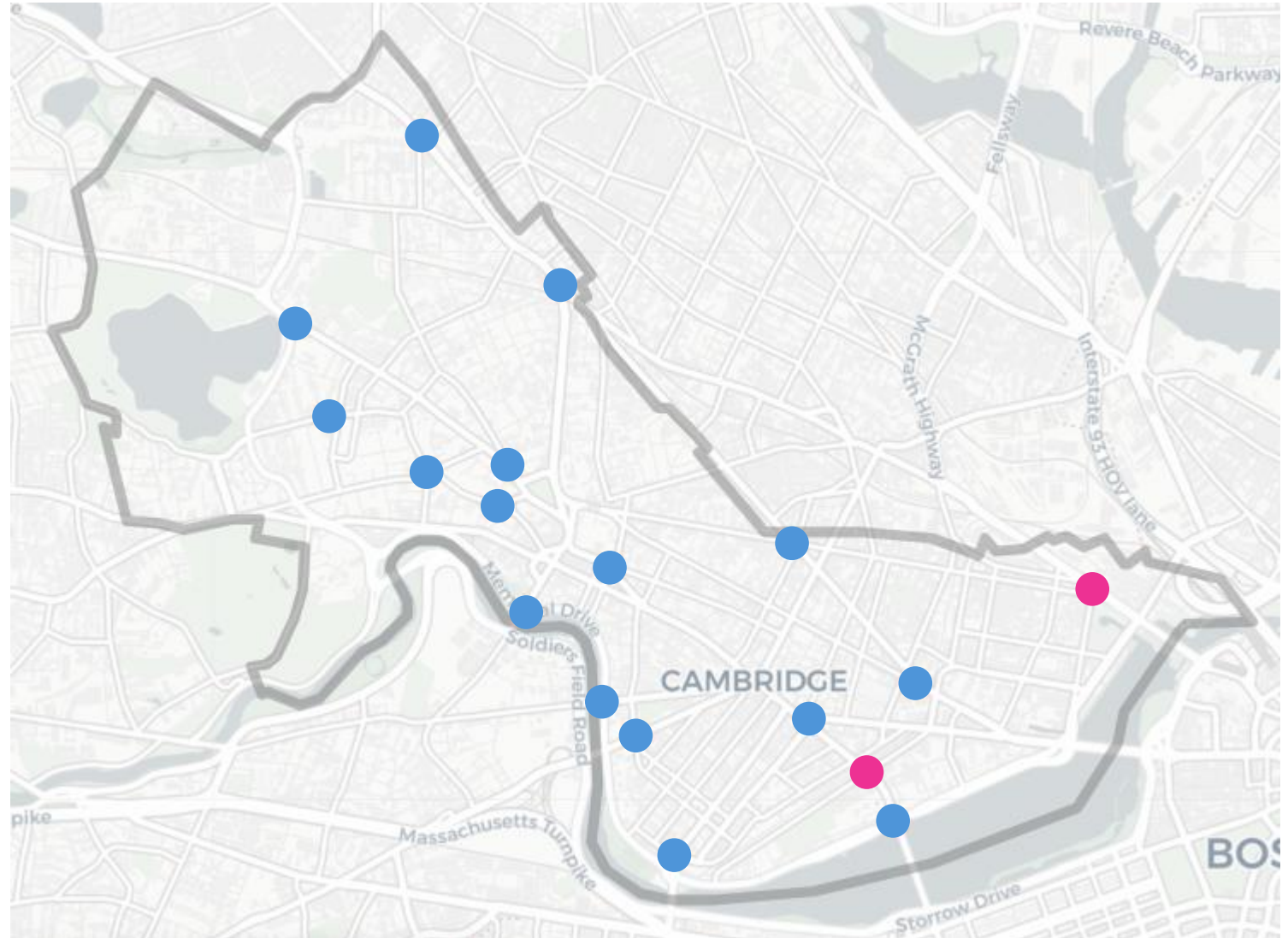
About the Citywide Bicycle Count Program

- What do we count?
 - People bicycling (2003 to 2024)
 - Children bicycling themselves or as passengers (2014, 2022 to 2024)
 - People using scooters and other micromobility devices (2022 to 2024)
- When do we count?
 - Every two years (generally)
 - Peak periods (7:30-9:30 AM & 4:30-6:30 PM)
 - Most recent data collected September 2024
- When will 2024 data be available?
 - 2024 [bicycle count data](#) posted this week!
 - 2025 Bicycling in Cambridge Data Report will be published this summer ([2023 report](#))



About the Citywide Bicycle Count Program, cont.

- Where do we count?
 - **16 core count locations**
(2003 to 2024)
 - **2 other locations**
with different starts:
 - Mass / Vassar (2010 to 2024)
 - O'Brien / Cambridge / First (2016 & 2024)



Program Limitations

- Does not count pedestrians and vehicles
- Does not count midday or weekend periods
- Counts are only a snapshot in time every two years
- Counts only cover traditional commuting periods. Commutes are about 10-15% of all trips!
- Sidewalk riding is a small sample size and therefore highly variable

Let’s compare first year data (2003) to most recent year data (2024)

Counts of Sidewalk Riding Over Time						
Intersection	How many people are riding on the sidewalk?		How many people are bicycling?		Of all people bicycling, how many are riding on the sidewalk?	
	2003	2024	2003	2024	2003	2024
TOTAL	749	1,131	5,287	23,431	14%	5%
Anderson Bridge & JFK St & Memorial Dr	159	348	602	1,465	26%	24%
Bow St & Massachusetts Ave	21	5	447	1,347	5%	0%
Brattle St & Mason St	4	35	181	944	2%	4%
Brattle St & Sparks St	5	21	199	995	3%	2%
Broadway & Hampshire St	17	42	430	2,262	4%	2%
Brookline St & Granite St	17	45	201	696	8%	6%
Cambridge St & Hampshire St	25	55	429	2,879	6%	2%
Cedar St & Massachusetts Ave	20	44	272	1,997	7%	2%
Chilton St & Huron Ave	5	20	86	243	6%	8%
Concord Ave & Fresh Pond Pkwy & New St	10	35	107	669	9%	5%
Concord Ave & Garden St	17	15	190	805	9%	2%
Mass Ave & Memorial Dr	182	176	761	3,435	24%	5%
Mass Ave & Sidney St	19	76	427	2,459	4%	3%
Mass Ave & Somerville Ave	34	32	414	2,081	8%	2%
Memorial Dr & Western Ave & Western Avenue Bridge	21	215	468	835	4%	26%
Putnam Ave & River St	30	36	73	319	41%	11%

Overall, while more people are biking in 2024 compared to 2003, they are now more likely to bike in the street or bike lane

Counts of Sidewalk Riding Over Time						
Intersection	How many people are riding on the sidewalk?		How many people are bicycling?		Of all people bicycling, how many are riding on the sidewalk?	
	2003	2024	2003	2024	2003	2024
TOTAL	749	1,131	5,287	23,431	14%	5%
Anderson Bridge & JFK St & Memorial Dr	159	348	602	1,465	26%	24%
Bow St & Massachusetts Ave	21	5	447	1,347	5%	0%
Brattle St & Mason St	4	35	181	944	2%	4%
Brattle St & Sparks St	5	21	199	995	3%	2%
Broadway & Hampshire St	17	42	430	2,262	4%	2%
Brookline St & Granite St	17	45	201	696	8%	6%
Cambridge St & Hampshire St	25	55	429	2,879	6%	2%
Cedar St & Massachusetts Ave	20	44	272	1,997	7%	2%
Chilton St & Huron Ave	5	20	86	243	6%	8%
Concord Ave & Fresh Pond Pkwy & New St	10	35	107	669	9%	5%
Concord Ave & Garden St	17	15	190	805	9%	2%
Mass Ave & Memorial Dr	182	176	761	3,435	24%	5%
Mass Ave & Sidney St	19	76	427	2,459	4%	3%
Mass Ave & Somerville Ave	34	32	414	2,081	8%	2%
Memorial Dr & Western Ave & Western Avenue Bridge	21	215	468	835	4%	26%
Putnam Ave & River St	30	36	73	319	41%	11%

8 intersections saw declines (≥ 3 percentage points decline) between 2003 and 2024

Counts of Sidewalk Riding Over Time						
Intersection	How many people are riding on the sidewalk?		How many people are bicycling?		Of all people bicycling, how many are riding on the sidewalk?	
	2003	2024	2003	2024	2003	2024
TOTAL	749	1,131	5,287	23,431	14%	5%
Anderson Bridge & JFK St & Memorial Dr	159	348	602	1,465	26%	24%
Bow St & Massachusetts Ave	21	5	447	1,347	5%	0%
Brattle St & Mason St	4	35	181	944	2%	4%
Brattle St & Sparks St	5	21	199	995	3%	2%
Broadway & Hampshire St	17	42	430	2,262	4%	2%
Brookline St & Granite St	17	45	201	696	8%	6%
Cambridge St & Hampshire St	25	55	429	2,879	6%	2%
Cedar St & Massachusetts Ave	20	44	272	1,997	7%	2%
Chilton St & Huron Ave	5	20	86	243	6%	8%
Concord Ave & Fresh Pond Pkwy & New St	10	35	107	669	9%	5%
Concord Ave & Garden St	17	15	190	805	9%	2%
Mass Ave & Memorial Dr	182	176	761	3,435	24%	5%
Mass Ave & Sidney St	19	76	427	2,459	4%	3%
Mass Ave & Somerville Ave	34	32	414	2,081	8%	2%
Memorial Dr & Western Ave & Western Avenue Bridge	21	215	468	835	4%	26%
Putnam Ave & River St	30	36	73	319	41%	11%

7 intersections stayed about the same (± 2 percentage point difference) between 2003 and 2024

Counts of Sidewalk Riding Over Time						
Intersection	How many people are riding on the sidewalk?		How many people are bicycling?		Of all people bicycling, how many are riding on the sidewalk?	
	2003	2024	2003	2024	2003	2024
TOTAL	749	1,131	5,287	23,431	14%	5%
Anderson Bridge & JFK St & Memorial Dr	159	348	602	1,465	26%	24%
Bow St & Massachusetts Ave	21	5	447	1,347	5%	0%
Brattle St & Mason St	4	35	181	944	2%	4%
Brattle St & Sparks St	5	21	199	995	3%	2%
Broadway & Hampshire St	17	42	430	2,262	4%	2%
Brookline St & Granite St	17	45	201	696	8%	6%
Cambridge St & Hampshire St	25	55	429	2,879	6%	2%
Cedar St & Massachusetts Ave	20	44	272	1,997	7%	2%
Chilton St & Huron Ave	5	20	86	243	6%	8%
Concord Ave & Fresh Pond Pkwy & New St	10	35	107	669	9%	5%
Concord Ave & Garden St	17	15	190	805	9%	2%
Mass Ave & Memorial Dr	182	176	761	3,435	24%	5%
Mass Ave & Sidney St	19	76	427	2,459	4%	3%
Mass Ave & Somerville Ave	34	32	414	2,081	8%	2%
Memorial Dr & Western Ave & Western Avenue Bridge	21	215	468	835	4%	26%
Putnam Ave & River St	30	36	73	319	41%	11%

1 intersection saw an increase (≥ 3 percentage points growth) between 2003 and 2024

Counts of Sidewalk Riding Over Time					
Intersection	How many people are riding on the sidewalk?		How many people are bicycling?		Of all people bicycling, how many are riding on the sidewalk?
	2003	2024	2003	2024	2003 2024
TOTAL	749	1,131	5,287	23,431	14% 5%
Anderson Bridge & JFK St & Memorial Dr	159	348	602	1,465	26% 24%
Bow St & Massachusetts Ave	21	5	447	1,347	5% 0%
Brattle St & Mason St	4	35	181	944	2% 4%
Brattle St & Sparks St	5	21	199	995	3% 2%
Broadway & Hampshire St	17	42	430	2,262	4% 2%
Brookline St & Granite St	17	45	201	696	8% 6%
Cambridge St & Hampshire St	25	55	429	2,879	6% 2%
Cedar St & Massachusetts Ave	20	44	272	1,997	7% 2%
Chilton St & Huron Ave	5	20	86	243	6% 8%
Concord Ave & Fresh Pond Pkwy & New St	10	35	107	669	9% 5%
Concord Ave & Garden St	17	15	190	805	9% 2%
Mass Ave & Memorial Dr	182	176	761	3,435	24% 5%
Mass Ave & Sidney St	19	76	427	2,459	4% 3%
Mass Ave & Somerville Ave	34	32	414	2,081	8% 2%
Memorial Dr & Western Ave & Western Avenue Bridge	21	215	468	835	4% 26%
Putnam Ave & River St	30	36	73	319	41% 11%

Bicyclists are becoming more likely to be in the bike lane or street at locations with recent bicycle projects

Counts of Sidewalk Riding Over Time		Of all people bicycling, how many are riding on the sidewalk?			
Intersection		2003	2019	2022	2024
TOTAL		14%	6%	5%	5%
Anderson Bridge & JFK St & Memorial Dr		53%	28%	17%	19%
Bow St & Massachusetts Ave		5%	2%	1%	0%
Brattle St & Mason St (2022-2023 CSO project)		2%	3%	3%	4%
Brattle St & Sparks St (2022-2023 CSO project)		3%	2%	4%	2%
Broadway & Hampshire St (2023-2024 CSO project)		4%	1%	1%	2%
Brookline St & Granite St		8%	6%	8%	6%
Cambridge St & Hampshire St (2022 reconstruction)		6%	2%	1%	2%
Cedar St & Massachusetts Ave (2022 CSO project)		7%	5%	2%	2%
Chilton St & Huron Ave		6%	6%	4%	8%
Concord Ave & Fresh Pond Pkwy & New St		9%	3%	3%	5%
Concord Ave & Garden St (2022 CSO project)		9%	11%	7%	2%
Mass Ave & Memorial Dr (2022 MassDOT project)		24%	9%	3%	5%
Mass Ave & Sidney St (2022 MBTA project)		4%	2%	3%	3%
Mass Ave & Somerville Ave (2022 CSO project)		8%	1%	0%	2%
Memorial Dr & Western Ave & Western Avenue Bridge		4%	19%	21%	26%
Putnam Ave & River St		41%	7%	12%	11%

Why look at the difference between 2022 and 2024?

Many projects were installed in the 2002-2003 timeframe, so new habits may have formed by 2024

The data show consistent levels of sidewalk riding after these projects were installed...

... Same for these two projects, but there's a decline overall since 2003 in total share of bicyclists on the sidewalk

The biggest observed decline in percentage of sidewalk riding after project installation was at Garden / Concord. Two Mass Ave projects have seen overall declines since 2003, but not since 2022

Where Can I Find These Data?

Cambridge Bicycle Data webpage

<https://www.cambridgema.gov/CDD/Transportation/gettingaroundcambridge/bikesincambridge/biketrends>

Getting Around Cambridge

By Foot

By Bike

Rules of the Road

Cambridge Bicycle Plan

Bicycle WikiMap

Ebikes

Designing for Bikes

New and Current
Bicycle Projects

Bluebikes Bike Share

Bicycle Parking

Bicycle Toolbox

Bicycle Workshops

Bicycle Crash
Information

Reporting Vehicles
Blocking Bike Lanes

Bike FAQ

[CDD](#) > [Transportation](#) > [Getting Around Cambridge](#) > [By Bike](#) > Bicycle Data

Bicycle Data

The City of Cambridge uses a variety of data to evaluate bicycling conditions in the city. These data are used to help measure growth, identify issues, determine what is and is not working, and make decisions to improve bicycling conditions for people of all ages and abilities.

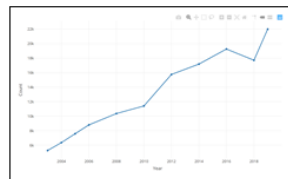
Click in the boxes below to learn more about different kinds of bicycle data available.

Bicycling in Cambridge Data Report



This 2023 report contains updated information and analyses of bicycle data trends.

Citywide Bike Counts



View an interactive data application of the City's regular citywide bike counts. These counts have been collected at intersections throughout the city since 2002. Counts can be viewed as a chart or downloaded as a spreadsheet.

Quick Links

I'd like to learn more about...

Select a Topic

Neighborhood or Square

Select One

Current Projects...

Select One

A 5-STAR Community
and National Leader in
Sustainability



This page provides important background and instructions for using this application. To view the data itself, click [Data Viewer](#).

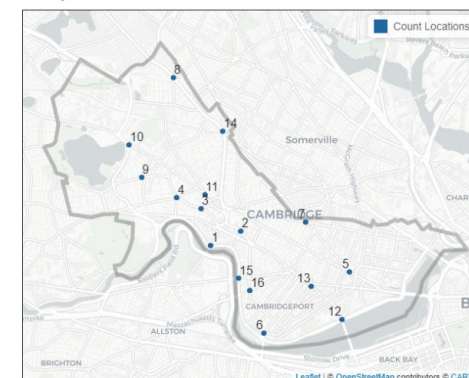
[Background Information](#)
[How to Use This Application](#)
[More Information](#)

Background Information

The bicycle count data included in this application was collected as part of the City of Cambridge's regular citywide bicycle counts. These counts are typically done on weekdays (Tuesday-Thursday) in September, annually between 2002-2006 and every other year since 2008, with an additional count in 2019 due to poor weather in 2018. As you look at this data, you will likely see overall patterns emerging, such as the overall trend to increased numbers of people bicycling. However, for some years and some intersection counts, outside factors influenced the numbers must be taken into consideration. (See other **Important Notes** below). For comparative analysis, 16 intersections have been counted consistently between 2003-2024:

1. Anderson Bridge & JFK St & Memorial Dr
2. Bow St & Massachusetts Ave
3. Brattle St & Mason St
4. Brattle St & Sparks St
5. Broadway & Hampshire St
6. Brookline St & Granite St
7. Cambridge St & Hampshire St
8. Cedar St & Massachusetts Ave
9. Chilton St & Huron Ave
10. Concord Ave & Fresh Pond Pkwy & New St
11. Concord Ave & Garden St
12. Massachusetts Ave & Memorial Dr
13. Massachusetts Ave & Sidney St
14. Massachusetts Ave & Somerville Ave
15. Memorial Dr & Western Ave & Western Avenue Bridge

Bicycle Count Intersections 2003-2024



Public Comment

7:55-8:00 PM