

Stations and Facilities

Dennis Varley Chief of Stations, Facilities
and Structures



Current Stations' Initiatives – New Way of Doing Business

2

Growing our internal depth

- Institutional knowledge, Accountability, Relationships, Inspection Protocols, In-house engineering capabilities aligned with in-house trades for more expedient and efficient SOGR & upgrade work.

Passenger and Public Safety

Proactive vs. Reactive Organization

- Preventative Maintenance Enhancements
- Establish a SOGR for Stations and Facilities.
- Operations Guide Development
- Asset Inventories
- Internal Partnering Opportunities



Stations Department Leadership Overview

3



Michael Foglio

Deputy Chief of Stations

- Responsible for Branch Line Managers, Station Support Managers and Coordinators
- 20 Years Transit Experience Recently Director Grand Central Terminal New York City MTA



Alex Machaiek

Deputy Chief of Facilities & Structures

- Responsible for skill-building trades.
- 25+ Years Managing and Operating a diverse portfolio of Facilities in Higher Education, Maritime, and Offshore Oil and Gas.



Chris Giunta, PE

Senior Director of Engineering

- Responsible for developing a robust inspection process of our structures and in-house engineering capabilities
- 25+ years developing, managing, and delivering strategic projects for the Federal Government. US Army Veteran & Licensed Professional Engineer



What is a good station? Focus on the customer.

- Gateways to our transit system
- Gateways to the communities we serve
- Stations should be clean, bright and inviting – instill pride in the riding public
- State of good repair
- Safe
- Accessible
- Maintainable



Community College | Entrance Restored





Developing Internal Depth at the MBTA

5

Stations, Facilities and Structures

- Building dynamic work teams to complete tasks effectively – Composite Gangs
- Implementing enhanced work management plan, documentation, and metrics.
- Building dynamic work teams to complete tasks effectively



Branch Line Managers

6



Amanda Bright

Red Line

Background: 19-year
MBTA Employee



Mick Brunache

Orange Line

Background:
Keolis Conductor



Alexander Soto

Blue Line

Background: Facility
Leadership in
Academic and
Healthcare



Jaleesa Turner

Green Line

Background: Keolis
Train Master

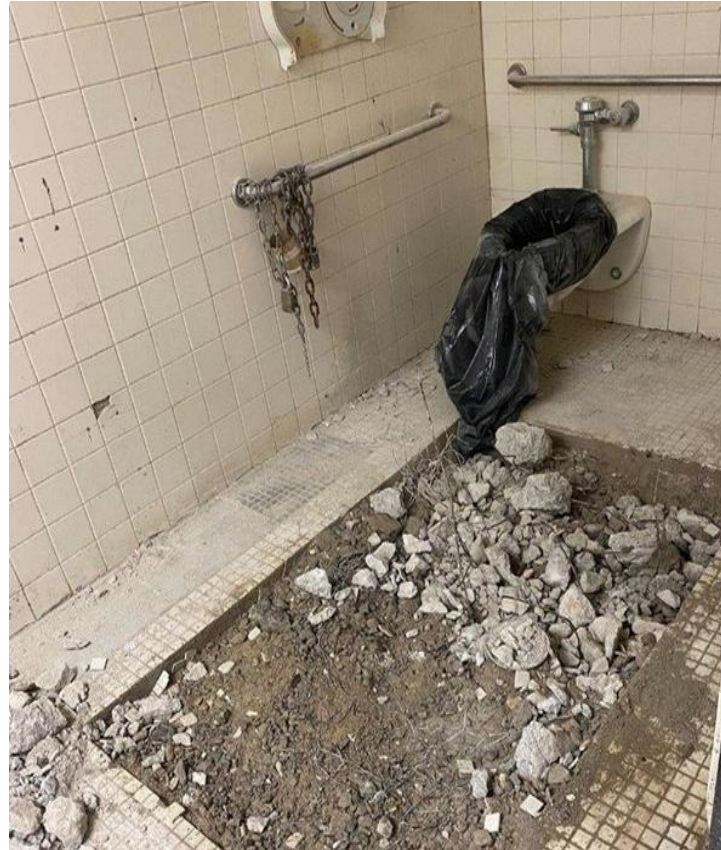


Structures and Facilities

7

- Working to build a preventative maintenance and inspection program
- Identifying and addressing deferred maintenance tasks

Braintree Public Restroom



Before

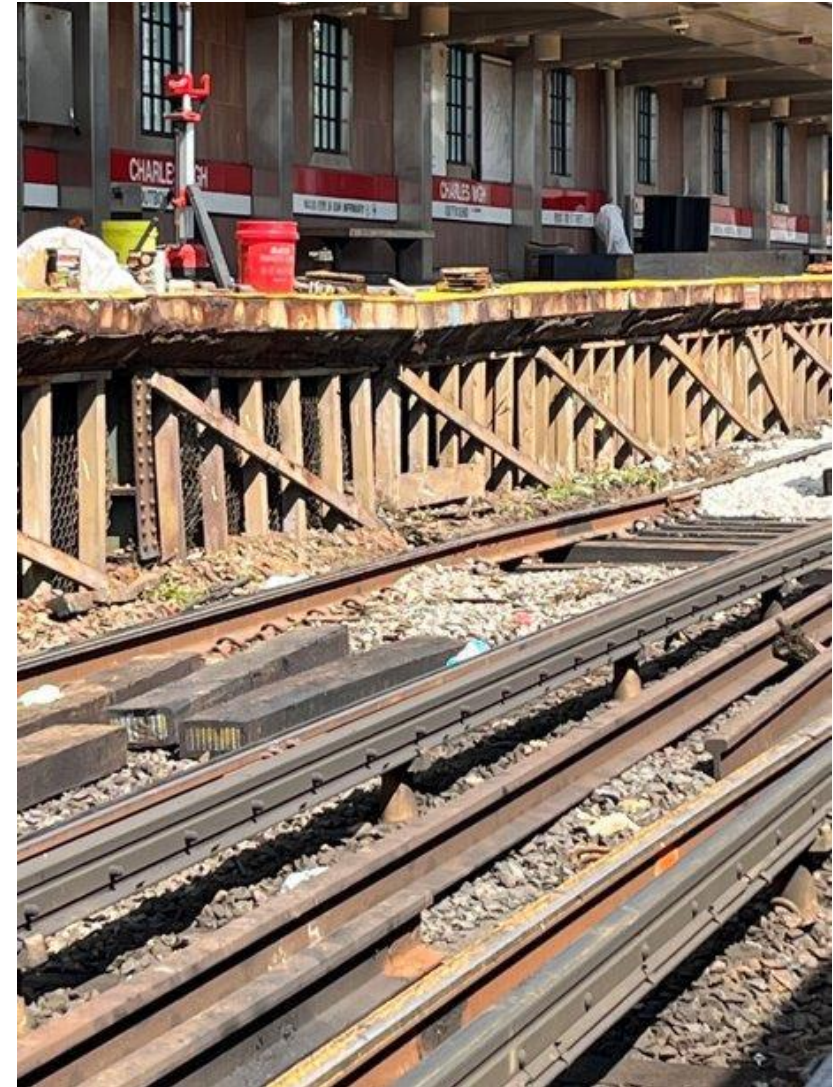


After



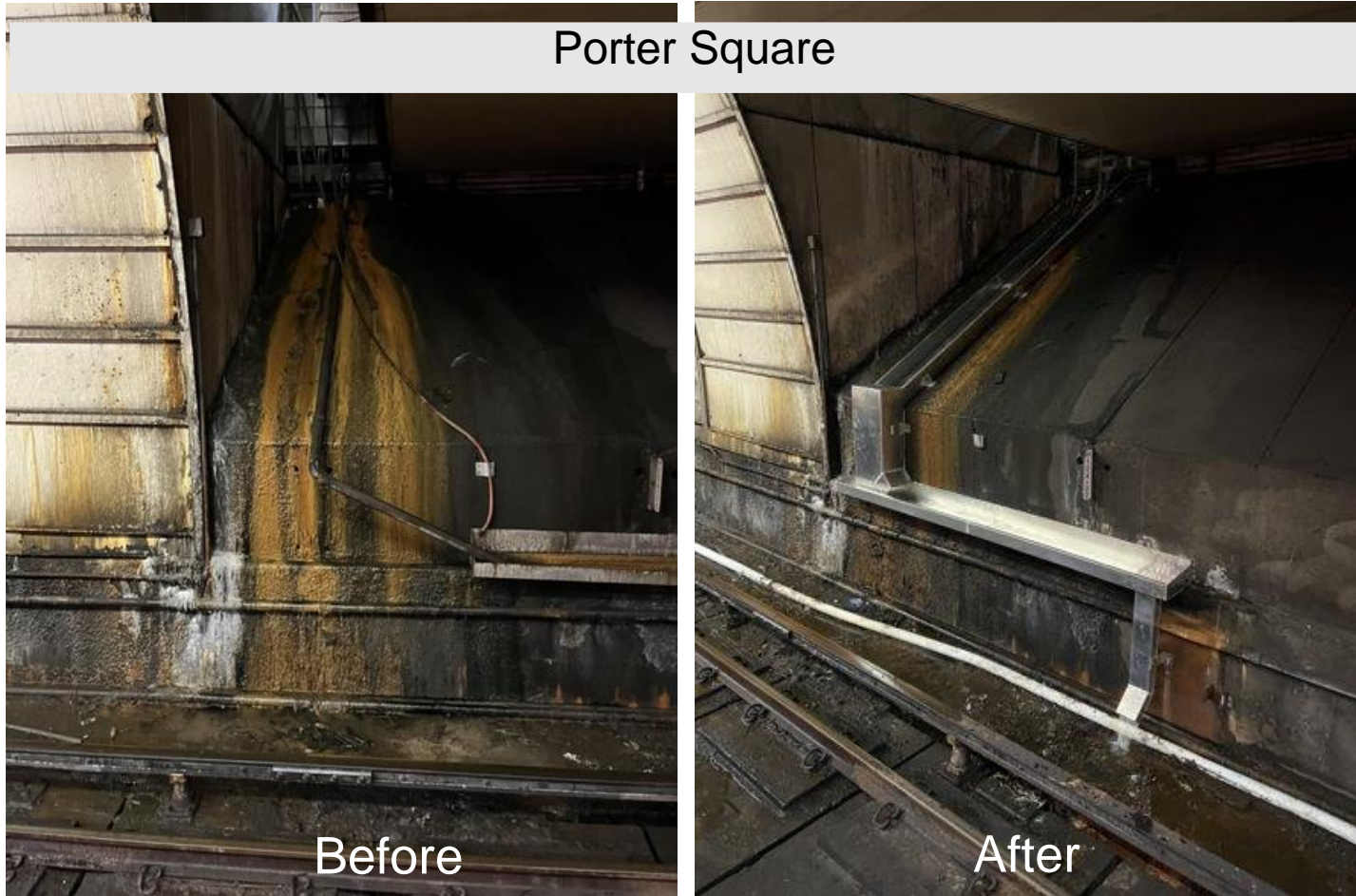
Structures and Facilities

- Addressing known Stations & Facilities issues in public space and taking advantage of increased access on the Right-Of-Way Diversions.
- Working to develop an enhanced work management plan, with accurate documentation and metrics.
- Working to build preventative maintenance and Inspection program
- Building dynamic work teams to complete tasks effectively.



Stations Engineering – Water Intrusion

9



- Water Intrusion in the tunnels is a challenge in subway infrastructure
- This is ground water intrusion that could not be stopped.
- Degraded the track infrastructure and signal system at Porter Square.
- Built a trough to re-direct the water to the drains that lead to the pump station.



Stations Engineering - Pump Rooms

10

- Critical for the protection and restoration of service in the instance of flooding
- Implementing a proactive inspection and maintenance program



Before



After

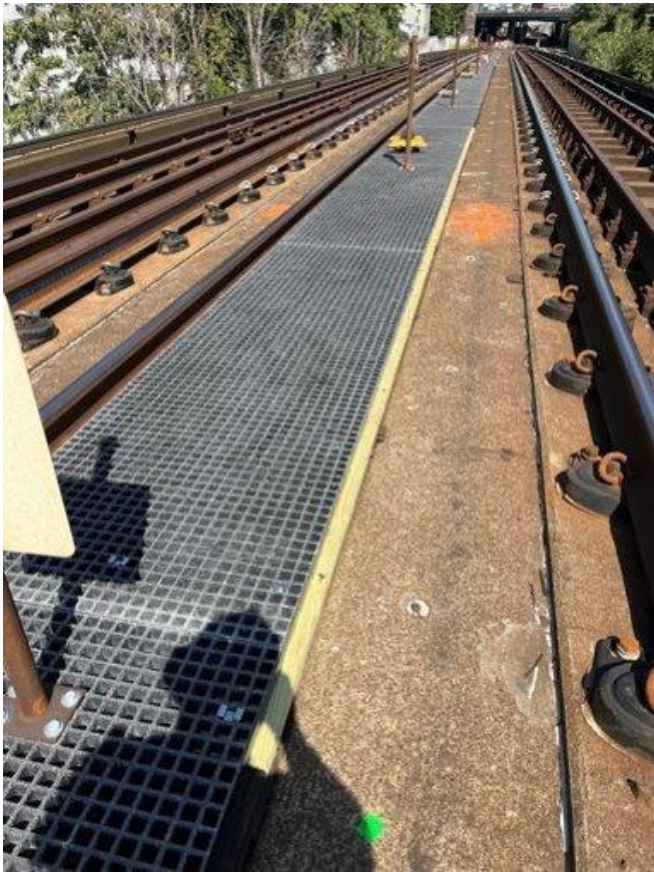
Stations Engineering – DeVaughn Flyover



Before



Mock-up



After



Thank you!

Questions?

