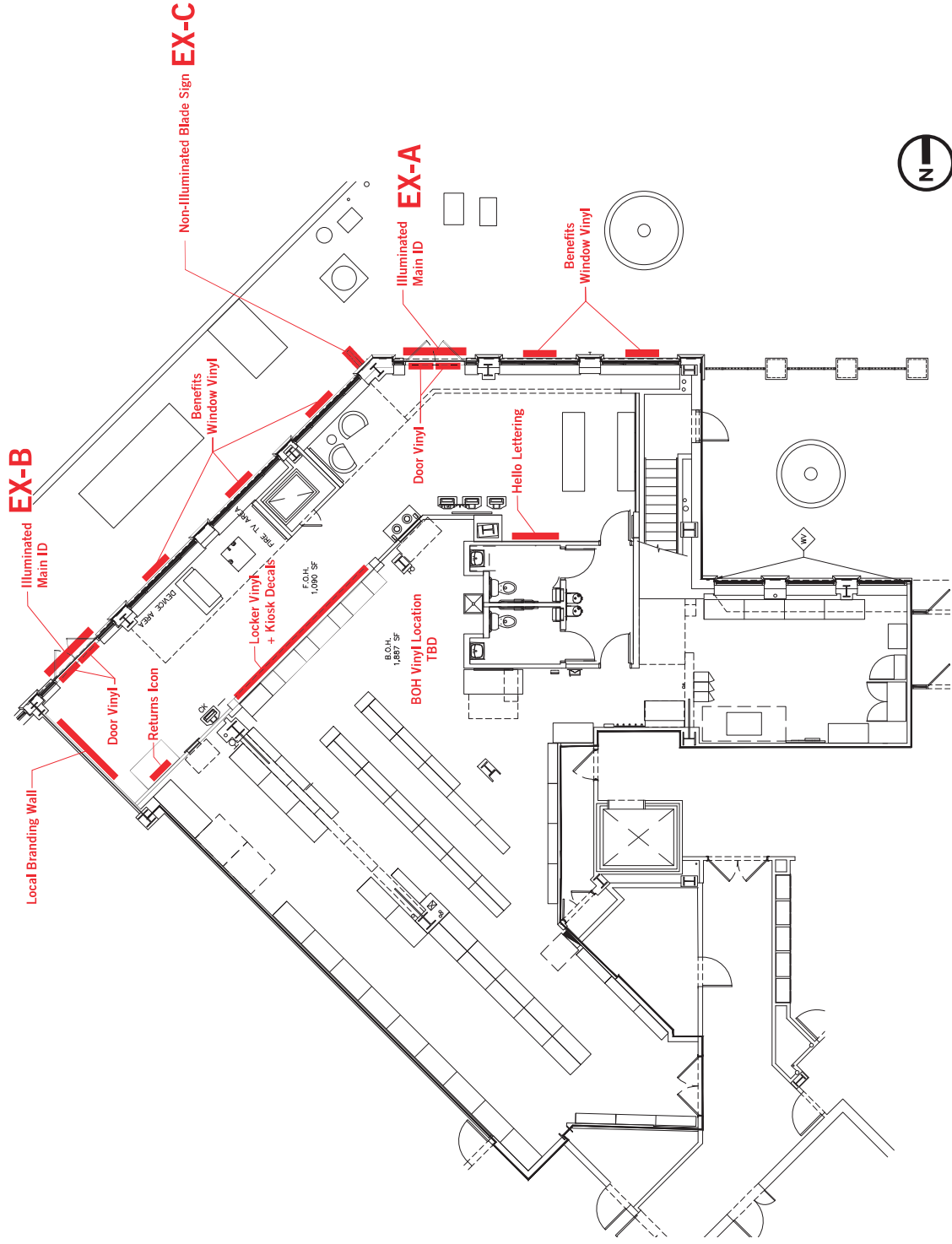


SIGN PLAN



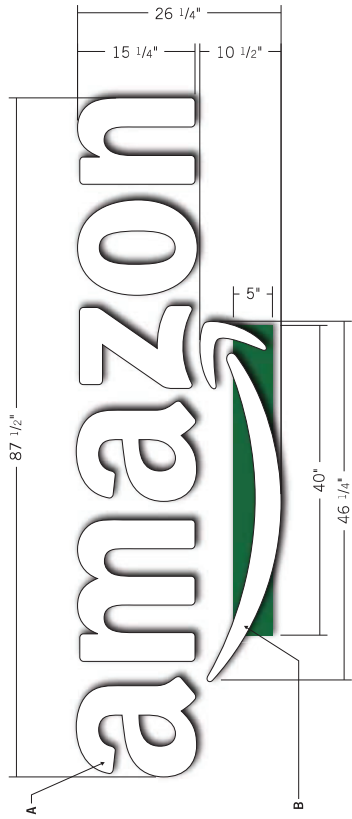
SIGN PLAN

Scale: 3/32" = 1'- 0"

EXTERIOR A - ILLUMINATED MAIN ID (NORTHWEST WALL)

FOR EXTERIOR USE

SQ FT. = 15.95



ILLUMINATED LETTERING AND LOGO - FRONT VIEW

Scale: 3/4" = 1'-0"

NEED TO SURVEY SOFFIT TO VERIFY DEPTH TO BUILD WIREWAY SO BOTH TOP AND BOTTOM LETTER LINES ARE FLUSH TO ONE ANOTHER

VOLTS: _____ AMPS: _____ CIRCUITS: _____
REQUIRES DEDICATED 20 AMP CIRCUIT

THIS SIGN IS INTENDED TO BE INSTALLED IN ACCORDANCE WITH THE REQUIREMENTS OF ARTICLE 600 OF THE NATIONAL ELECTRICAL CODE AND/OR OTHER APPLICABLE CODES. THIS INCLUDES PROPER GROUNDING AND BONDING OF THE SIGN.

A. ILLUMINATED CHANNEL LETTERING Qty: 1

- 3" Deep channel letter with aluminum returns painted matte black.
- Interior of channels painted reflective white.
- .177" Translucent white acrylic faces.

White LEDs populate interior of channels for face illumination.

Low voltage wiring connected to external power supply to 120V 20A circuit. Drain holes to be at base of letters and to be baffled.

MOUNT

Letters mounted flush to wall with mechanical fasteners.

B. ILLUMINATED CHANNEL SMILE LOGO Qty: 1

- 3" Deep channel letter logo with aluminum returns painted matte black.
- Interior of channels painted reflective white.
- .177" Translucent white acrylic faces.

White LEDs populate interior of channels for face illumination.

Low voltage wiring connected to external power supply to 120V 20A circuit. Drain holes to be at base of letters and to be baffled.

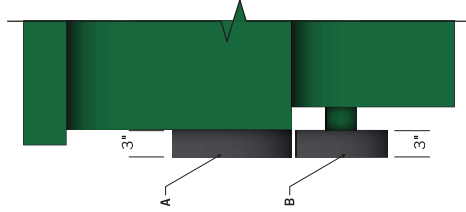
Wireway to be used as a standoff for the arrow since the soffit is uneven.

Access to interior of wireway to be from the base with drain holes drilled every 48". Box painted green to match building(CALL OUT TBD).

MOUNT

Wireway mounted to designated wall with mechanical fasteners.

Smile mounted to wireway with mechanical fasteners.



SIDE VIEW

Scale: 1/2" = 1'-0"



ELEVATION - EXTERIOR PARTIAL NORTH WALL

Scale: 1/4" = 1'-0"



SEATTLE | NEW YORK

JOB#
101652

PROJECT NAME
AMAZON CAMPUS
477 Boston - Central Square

LOCATION
624 Massachusetts Ave.
Cambridge, MA 02139
Parcel ID#: TBD

CONTACTS
Sharon Lefkowitz

PROJECT MANAGER
Greg Griffin

DESIGN
Hank Baring

SCALE
Noted

ORIGINAL DATE
09.27.2017

REVISION DATES/NOTES
10.12.2017

FILE LOCATION
M:\A\101652 - Amazon -
Boston Central Square_Design

APPROVED

BY:

DATE:

AS SHOWN
 WITH-NOTED CHANGES

M3 MESSENGER
275 Washington St
South Woburn, MA 01874
708.637.4235
messengercorp.com

© 2017 M3 Messenger Corp. All rights reserved. Amazon and the registered logo of Amazon Corporation and its affiliates are trademarks of Amazon.com, Inc. or its affiliates. All other marks contained herein are the property of their respective owners. M3 Messenger Corp. is not responsible for any damage to property or injury to persons or animals that may occur as a result of the use of the information contained herein. M3 Messenger Corp. is not responsible for any damage to property or injury to persons or animals that may occur as a result of the use of the information contained herein. M3 Messenger Corp. is not responsible for any damage to property or injury to persons or animals that may occur as a result of the use of the information contained herein.

PAGE

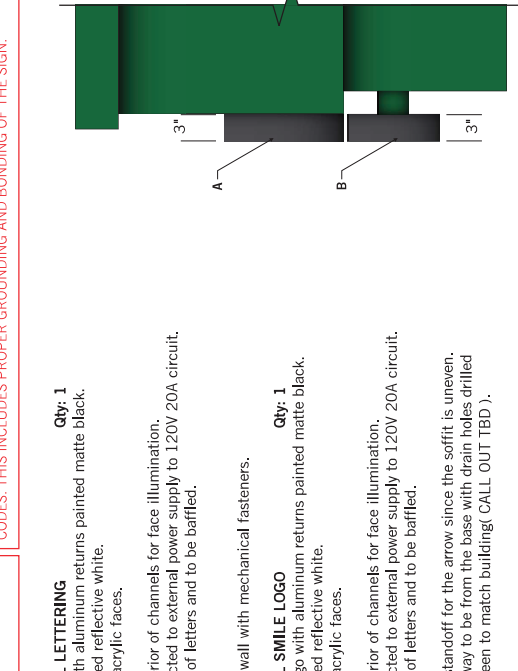
EXTERIOR B - ILLUMINATED MAIN ID (NORTH WALL)

SQ FT. = 15.95

FOR EXTERIOR USE

VOLTS: _____ AMPS: _____ CIRCUITS: _____
REQUIRES DEDICATED 20 AMP CIRCUIT

THIS SIGN IS INTENDED TO BE INSTALLED IN ACCORDANCE WITH THE REQUIREMENTS OF ARTICLE 600 OF THE NATIONAL ELECTRICAL CODE AND/OR OTHER APPLICABLE CODES. THIS INCLUDES PROPER GROUNDING AND BONDING OF THE SIGN.

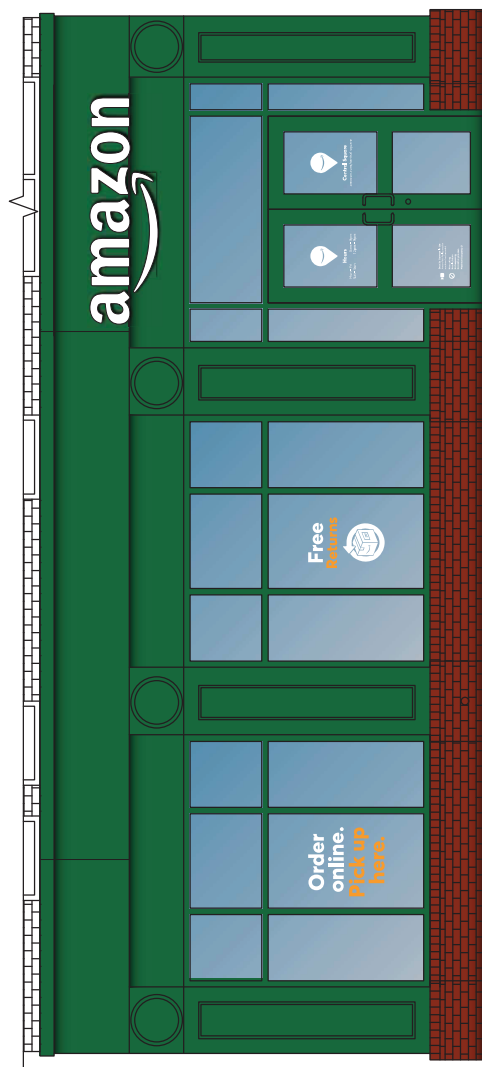


- A. ILLUMINATED CHANNEL LETTERING** Qty: 1
 3" Deep channel letter with aluminum returns painted matte black.
 Interior of channels painted reflective white.
 .177" Translucent white acrylic faces.
 White LEDs populate interior of channels for face illumination.
 Low voltage wiring connected to external power supply to 120V 20A circuit.
 Drain holes to be at base of letters and to be baffled.
- MOUNT**
 Letters mounted flush to wall with mechanical fasteners.
- B. ILLUMINATED CHANNEL SMILE LOGO** Qty: 1
 3" Deep channel letter logo with aluminum returns painted matte black.
 Interior of channels painted reflective white.
 .177" Translucent white acrylic faces.
 White LEDs populate interior of channels for face illumination.
 Low voltage wiring connected to external power supply to 120V 20A circuit.
 Drain holes to be at base of letters and to be baffled.
- Wireway to be used as a standoff for the arrow since the soffit is uneven.
 Access to interior of wireway to be from the base with drain holes drilled every 48". Box painted green to match building(CALL OUT TBD).
- MOUNT**
 Wireway mounted to designated wall with mechanical fasteners.
 Smile mounted to wireway with mechanical fasteners.



NEED TO SURVEY SOFFIT TO VERIFY DEPTH TO BUILD WIREWAY SO BOTH TOP AND BOTTOM LETTER LINES ARE FLUSH TO ONE ANOTHER

ILLUMINATED LETTERING AND LOGO - FRONT VIEW
 Scale: 3/4" = 1'- 0"



ELEVATION - EXTERIOR PARTIAL NORTH WALL
 Scale: 1/4" = 1'- 0"



SEATTLE NEW YORK
JOB# 101652
PROJECT NAME AMAZON CAMPUS 17 Boston - Central Square
LOCATION 624 Massachusetts Ave. Cambridge, MA 02139 Parcel ID#: TBD
CONTACTS Sharon Lefkowitz
PROJECT MANAGER Gag Griffin
DESIGN Hank Barstlag
SCALE Noted
ORIGINAL DATE 09.27.2017
REVISION DATES/NOTES 10.13.2017
FILE LOCATION M:\Archives\Projects\101652 - Amazon - Boston Central Square_Design

APPROVED

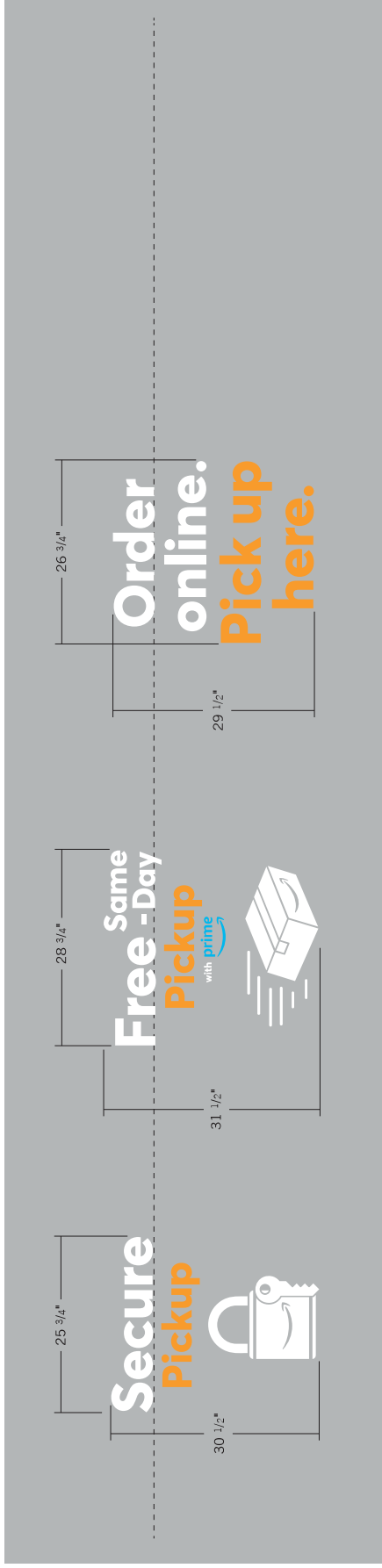
BY: _____
 DATE: _____
 AS SHOWN
 WITH NOTED CHANGES

M3 | MESSENGER
 250 North State Street
 Suite 1000
 Portland, WA 98104
 206.437.4525
 messengercorp.com

M3 Logo: © 2017
 All rights reserved. Amazon is the registered property of Amazon Corporation and may be used in any form or for any purpose without express or implied consent. Amazon is a registered trademark of Amazon.com. All other marks and logos are the property of their respective owners. All other marks and logos are the property of their respective owners. All other marks and logos are the property of their respective owners. All other marks and logos are the property of their respective owners.

PAGE

WINDOW DECALS - BENEFITS MESSAGING (NORTHWEST WALL)



BENEFITS MESSAGING DECALS

Scale: 3/4" = 1'- 0"

A. VINYL WINDOW DECALS

Qty: 1 of Each (3)

- Second surface vinyl cut decals.
- White vinyl lettering.
- Orange vinyl to match PMS 1375C.
- Blue vinyl to match PMS 2995C.

INSTALL

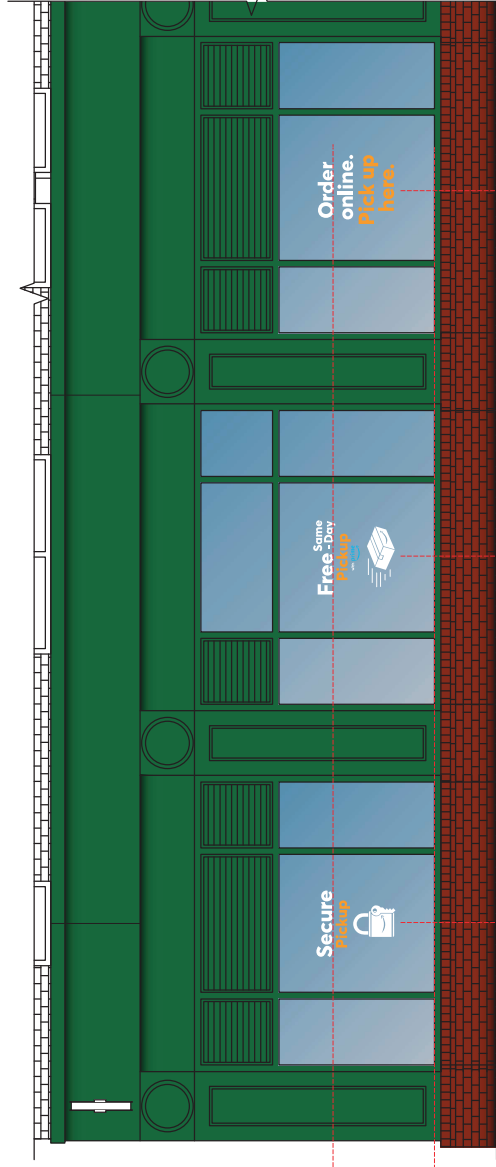
2ND SURFACE direct application to windows.
Center decals horizontally and measure 40" to baseline of first line of text to base of glass.

TOTAL SQ. FT. = TBD

PMS 1375C / 3M Kumquat Orange Stock Vinyl Coated Finish
PMS 2995C Coated Finish

Measure to
baseline of first
line of text to
base of glass.

GREY REPRESENTS WINDOW AREA



ELEVATION - EXTERIOR PARTIAL NORTHWEST WALL

Scale: 1/4" = 1'- 0"

WINDOW DECALS - BENEFITS MESSAGING (NORTH WALL)



BENEFITS MESSAGING DECALS
Scale: 3/4" = 1'- 0"

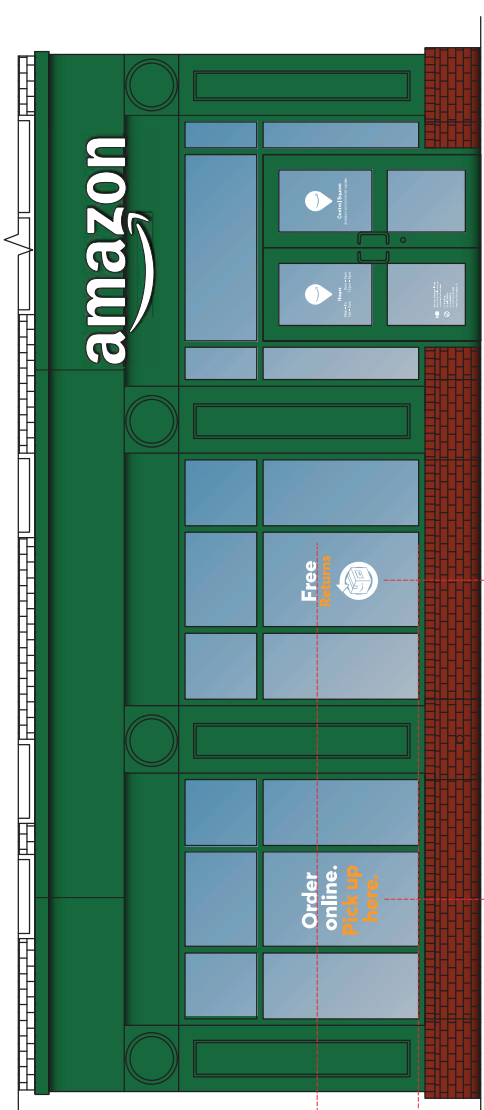
- A. VINYL WINDOW DECALS**
 Second surface vinyl cut decals.
 White vinyl lettering.
 Orange vinyl to match PMS 1375C.

INSTALL
 2ND SURFACE direct application to windows.
 Center decals horizontally and measure 40" to baseline of first line of text to base of glass.

TOTAL SQ. FT. = TBD

PMS 1375C / 3M Kumquat Orange Stock Vinyl
 Coated Finish

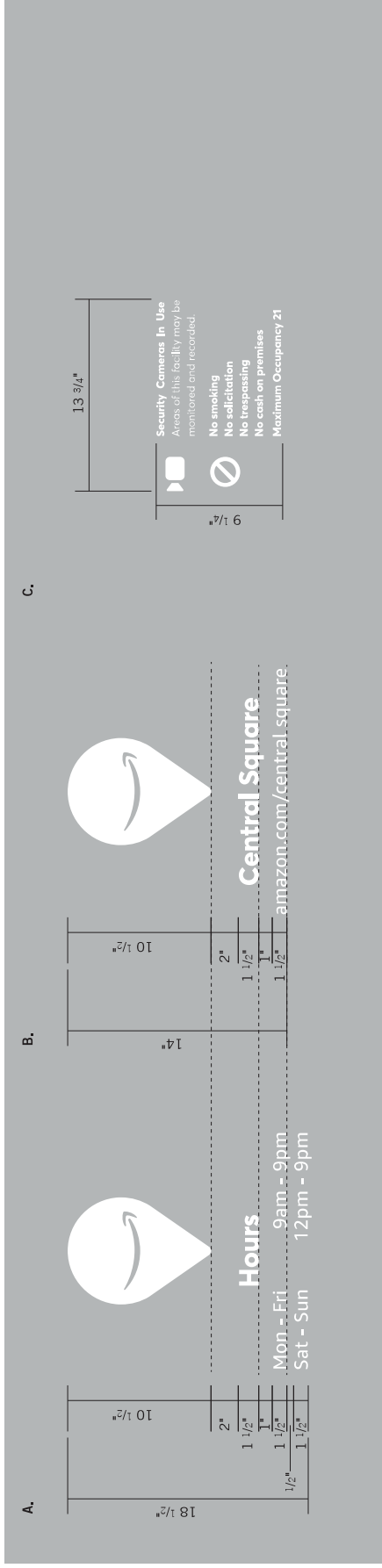
Qty: 1 of Each (2)



ELEVATION - EXTERIOR PARTIAL NORTH WALL

Scale: 1/4" = 1'- 0"

WINDOW DECALS - STORE URL / HOURS / RULES



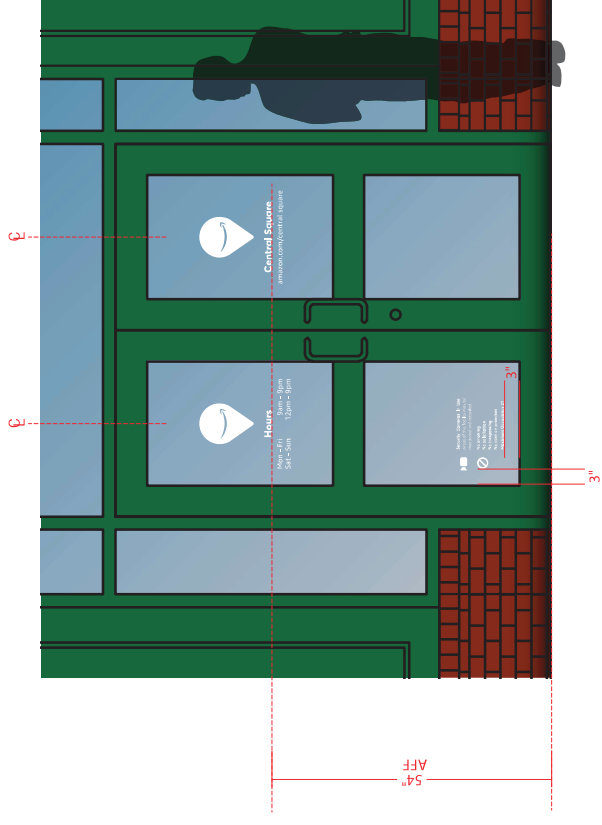
DOOR DECALS - (STORE HOURS / STORE URL / STORE RULES)

Scale: 1 1/2" = 1'-0"

- A. VINYL WINDOW DECALS "STORE HOURS"** Qty: 2
Second surface vinyl cut decals.
White vinyl lettering.
FONTS: Averta Extra Bold / Amazon Ember Regular
- B. VINYL WINDOW DECALS "STORE URL"** Qty: 2
Second surface vinyl cut decals.
White vinyl lettering.
FONTS: Averta Extra Bold / Amazon Ember Regular
- C. VINYL WINDOW DECALS "STORE RULES"** Qty: 2
Second surface white vinyl cut decals.

INSTALL
2ND SURFACE direct application to each entry door window locations.
Center decals horizontally and measure 54" to baseline of top line text to floor.

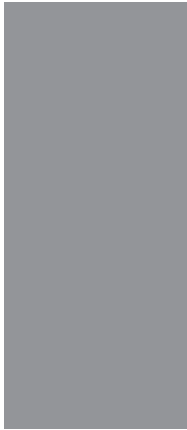
TOTAL SQ. FT. = TBD



ELEVATION - EXTERIOR DOOR

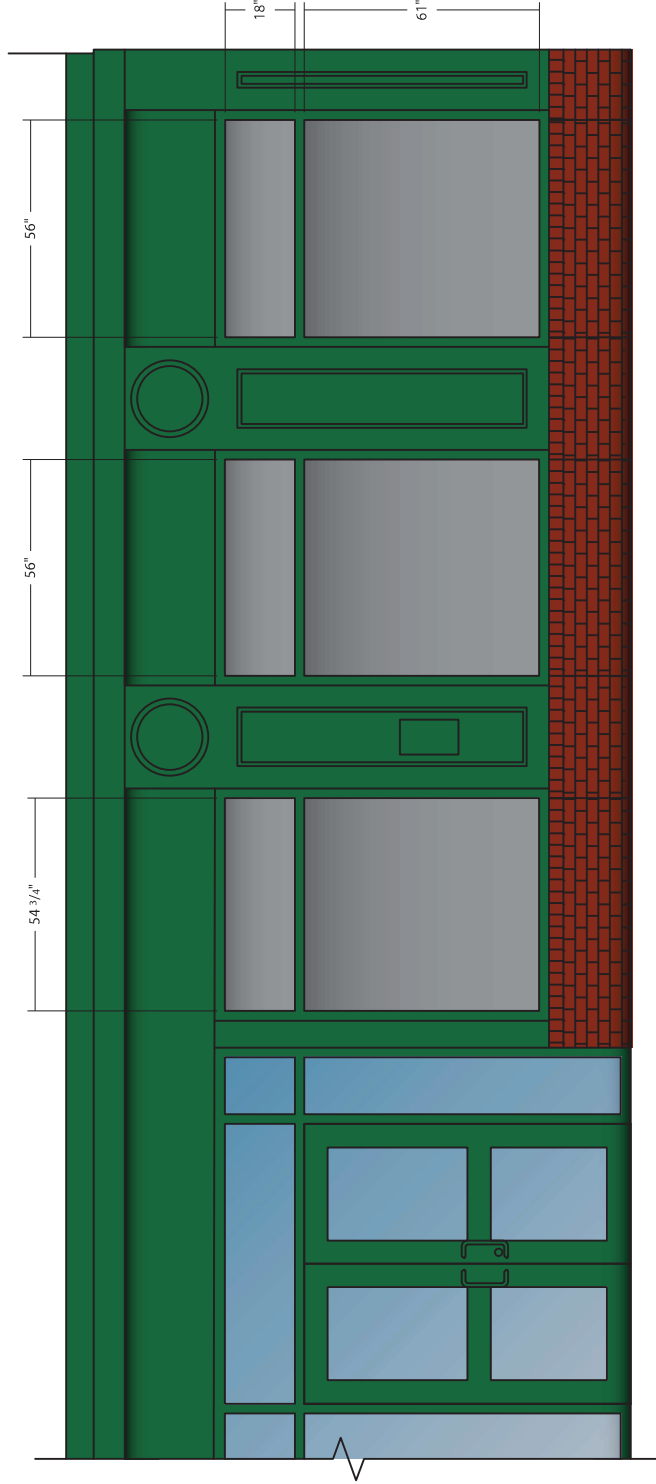
Scale: 1/2" = 1'-0"

EXTERIOR - BLOCK OUT WINDOW VINYL



A. VINYL BLOCK OUT MATERIAL
 Qty: 1
 3M Medium Gray 180C-31 Vinyl applied 2ND SURFACE as blockout vinyl covering all window areas around door.

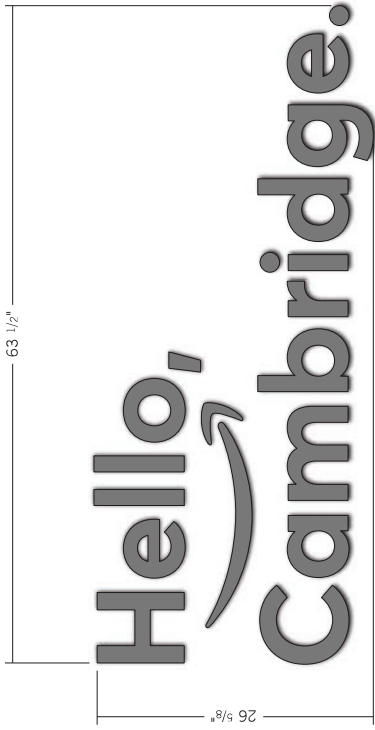
MOUNT
 2ND SURFACE application with vertical seams if necessary on lower windows.



ELEVATION - EXTERIOR PARTIAL NORTH WALL

Scale: 3/8" = 1'- 0"

INTERIOR - HELLO WALL



DIMENSIONAL WALL LETTERING

Scale: 1" = 1'- 0"

A. DIMENSIONAL WALL LETTERING

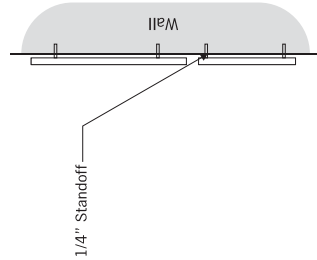
1/2" Laser cut acrylic face and sides painted PMS Cool Gray 9 with a matte finish.

FONT: Averta Bold

Qty: 1

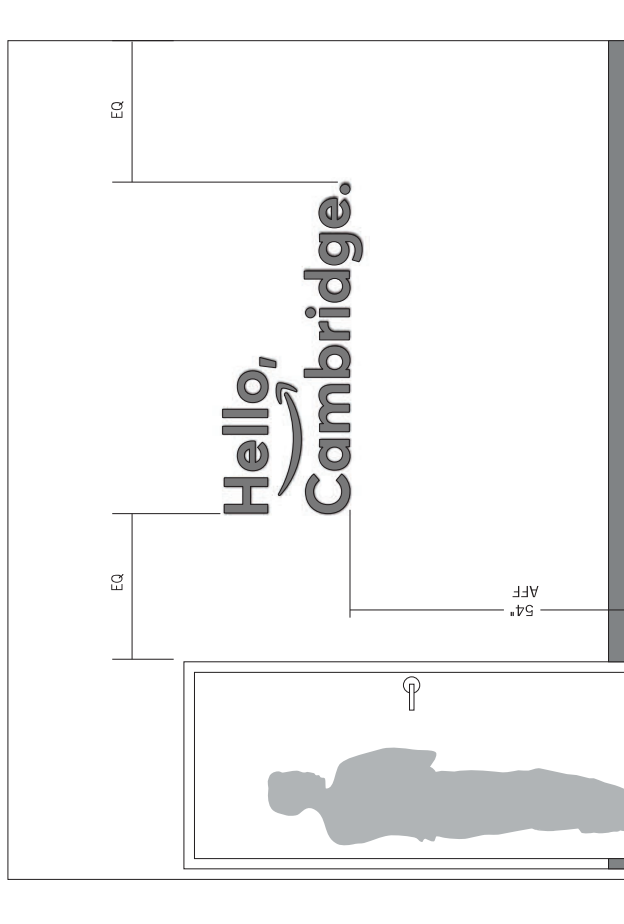
INSTALL

Pin mount lettering sand smile so it is 1/4" offset to the wall.



SIDE DETAIL

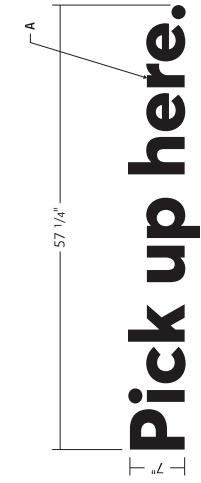
Scale: 1" = 1'- 0"



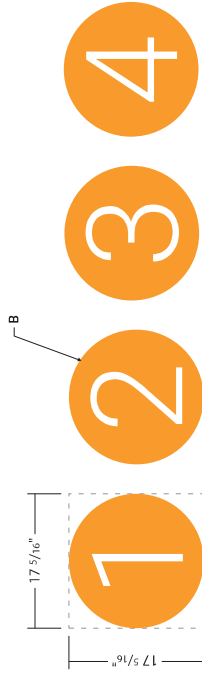
ELEVATION

Scale: 1/2" = 1'- 0"

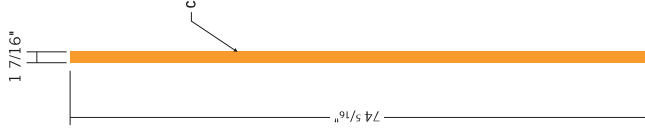
INTERIOR - LOCKER DECALS



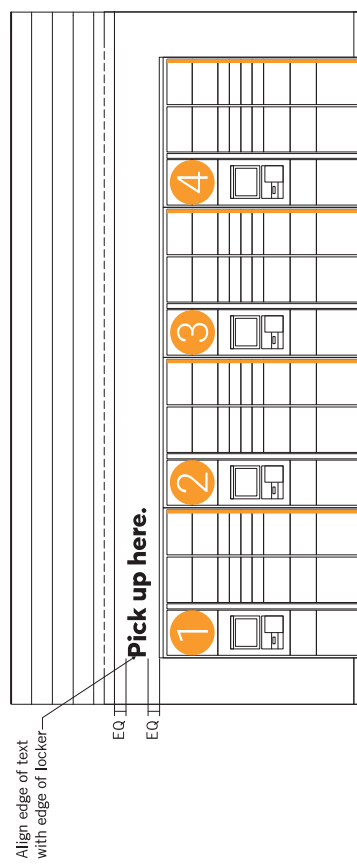
LOCKER SOFFIT DECAL - "CTA"
Scale: 3/4" = 1'-0"



LOCKER NUMBERS
Scale: 3/4" = 1'-0"



LOCKER DIVIDERS
Scale: 3/4" = 1'-0"



ELEVATION - INTERIOR LOCKER WALL
Scale: 1/4" = 1'-0"

A. LOCKER SOFFIT DECAL "CTA"
Matte black vinyl.
Font: Averta - Extra Bold / Size: 7.16pt (at full size)
Standard size CTA.

Qty: 1

INSTALL:
First surface direct application to soffit above lockers.
See drawing for exact placement.

B. LOCKER DECAL "NUMBERS"

First surface vinyl decals plot to shape with a reverse weed for the numbers to expose locker surface.
Orange vinyl to match PMS 1375C.
Font: Roboto - Light / Size: 1.186pt (at full size)

Qty: 4

C. LOCKER DECAL "DIVIDERS"

First surface vinyl decals plot to shape.
Orange vinyl to match PMS 1375C.

Qty: 4

INSTALL:

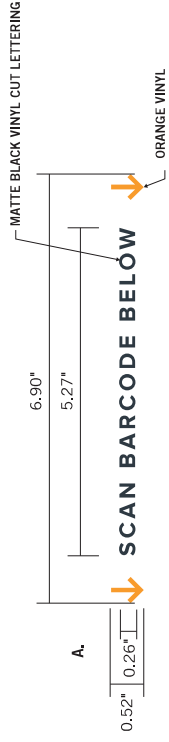
First surface direct application to lockers.
Numbers to be installed in sequence with corresponding kiosks.
Vertical dividers to be install flush with the last locker set within each locker grouping. See drawing for exact placement.

PMS 1375C / 3M Kumquat Orange Stock Vinyl
Coated Finish



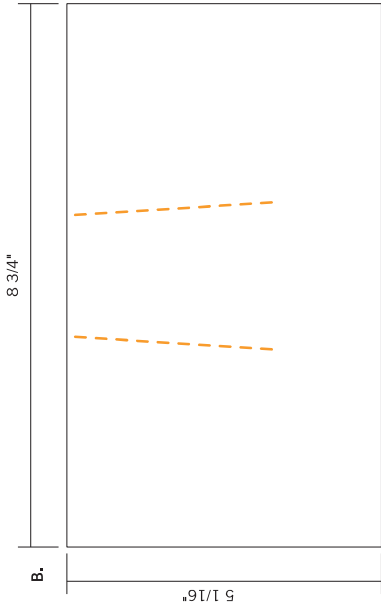
PREVIOUS INSTALL PHOTO FOR REFERENCE
Scale: NTS

INTERIOR - LOCKER KIOSK DECALS



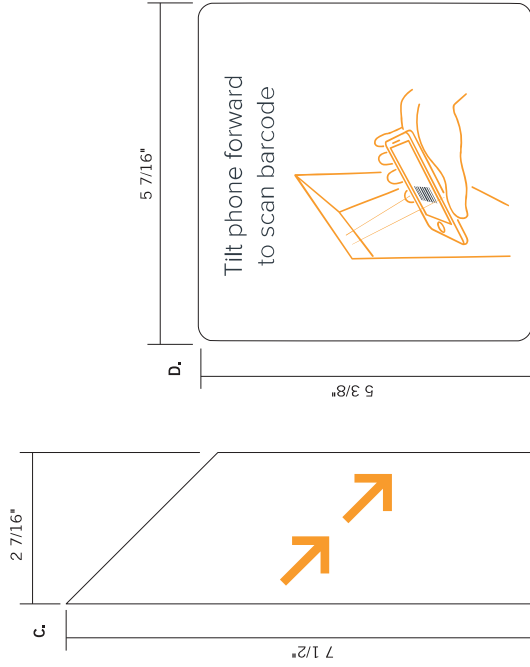
KIOSK VINYL CUT DECAL

Scale: 6" = 1'-0"



KIOSK FACE DETAIL

Scale: NTS



KIOSK DECALS

Scale: 6" = 1'-0"

A. VINYL LOCKER KIOSK DECALS "Scan Barcode Below / Arrows" Qty: 4
 First surface vinyl cut decal with text to be cut out of Matte Black vinyl and arrows cut from Orange vinyl to match PMS 1375C.

B. VINYL LOCKER KIOSK DECALS "Alignment Lines" Qty: 4
 First surface white control tac with digital graphic printed to surface with a matte laminate.
 Orange vinyl to match PMS 1375C.

C. VINYL LOCKER KIOSK DECALS "Alignment Arrows" Qty: 4
 First surface white control tac with digital graphic printed to surface with a matte laminate.
 Orange vinyl to match PMS 1375C.

D. VINYL LOCKER KIOSK DECALS "Tilt Phone Visual" Qty: 4
 First surface white control tac with digital graphic printed to surface with a matte laminate.
 Orange vinyl to match PMS 1375C.

MOUNT
 First surface direct application to kiosk.

PMS 1375C / 3M Kumquat Orange Stock Vinyl
 Coated Finish



REFERENCE PHOTO

Scale: NTS

INTERIOR - RETURNS WALL ICON



SEATTLE | NEW YORK

JOB #
101652

PROJECT NAME
**AMAZON CAMPUS
- Mill Station - Central Square**

LOCATION
**624 Massachusetts Ave,
Cambridge, MA 02139
Parcel ID#: TBD**

CONTACTS
Sharon Lefkowitz

PROJECT MANAGER
Greg Griffin

DESIGN
Hank Baurleg

SCALE
Noted

ORIGINAL DATE
09.27.2017

REVISION DATES/NOTES

FILE LOCATION
**M:\Projects\101652 - Amazon -
Boston Central Square_Design**

APPROVED

BY:

DATE:

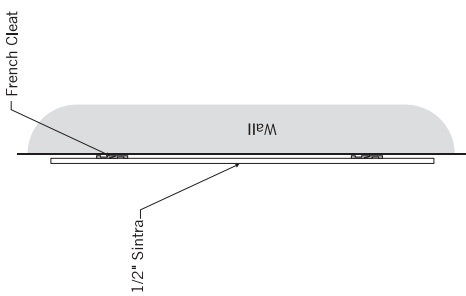
AS SHOWN

WITH NOTED CHANGES

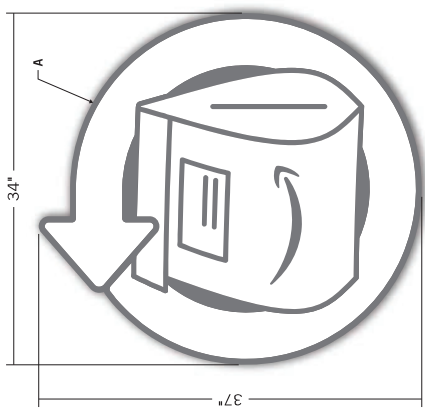
M3 MESSENGER
2000 Massachusetts Ave
Suite 1000
Boston, MA 02118
781.439.4535
messengercorp.com

© 2017 M3 Messenger Corp. All rights reserved. M3 Messenger is a registered trademark of M3 Messenger Corporation. Amazon and the Amazon logo are trademarks of Amazon.com, Inc. or its affiliates. All other trademarks are the property of their respective owners. All rights reserved. M3 Messenger Corporation is not responsible for any damage to property or injury to persons or animals that may occur as a result of the use of the information provided herein. M3 Messenger Corporation is not responsible for any damage to property or injury to persons or animals that may occur as a result of the use of the information provided herein. M3 Messenger Corporation is not responsible for any damage to property or injury to persons or animals that may occur as a result of the use of the information provided herein.

PAGE



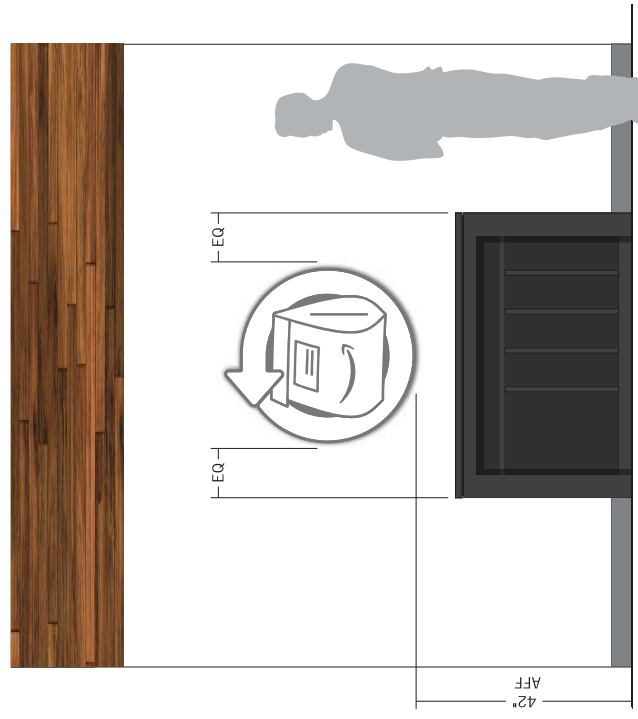
SIDE DETAIL
Scale: 1" = 1'-0"



DIMENSIONAL WALL ICON
Scale: 1" = 1'-0"

A. DIMENSIONAL WALL ICON Qty: 1
1/2" Sintra with direct print graphics (black 65%).

INSTALL
Sintra icon is mounted to wall using french cleats.
Center icon horizontally over returns cabinet and vertically align so base is 42" AFF.



ELEVATION
Scale: 1/2" = 1'-0"

INTERIOR - BACK OF THE HOUSE EMPLOYEE MESSAGING

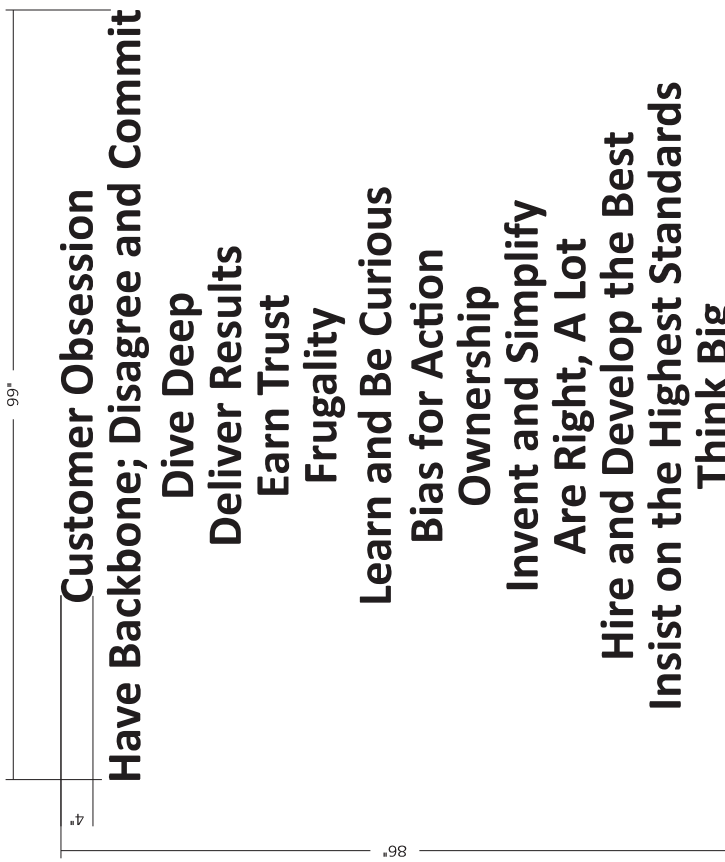
- A. EMPLOYEE ACTION STATEMENT** Qty: 1
6" Tall matte black vinyl cut lettering cut and premasked.
- B. EMPLOYEE PRINCIPLES** Qty: 1 of each statement (14 total)
4" Tall matte black vinyl cut lettering cut and premasked.

INSTALL PLAN:
All premasked statement decals to be installed in the back of the house employee only area. On site installer will work with the store manager to finalize placement locations of the decals and apply each to its designated wall.



EMPLOYEE ACTION STATEMENT

Scale: 3/4" = 1'- 0"



EMPLOYEE PRINCIPLES

Scale: 3/4" = 1'- 0"



SEATTLE | NEW YORK

JOB #
101652

PROJECT NAME
**AMAZON CAMPUS
- W11 Station - Central Square**

LOCATION
**624 Massachusetts Ave.
Cambridge, MA 02139
Parcel ID#: TBD**

CONTACTS
Sharon Lefkowitz

PROJECT MANAGER
Greg Griffin

DESIGN
Hank Baring

SCALE
Noted

ORIGINAL DATE
09.27.2017

REVISION DATES/NOTES

FILE LOCATION
**\\na1-nas01\lo1652-Arizona-
Boston Central Square_Design**

APPROVED

BY:

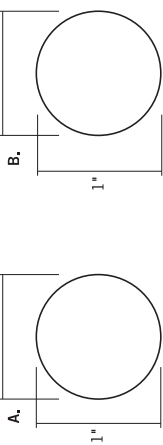
DATE:

AS SHOWN
 WITH NOTED CHANGES

M3 MESSENGER
2000 Massachusetts Ave
Suite 1000
Boston, MA 02115
781.434.1000
m3messenger.com

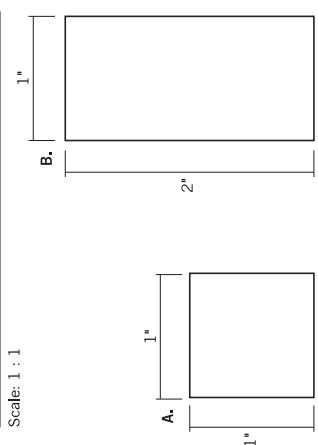
© 2017 M3 Messenger, Inc. All rights reserved.
All items are the property of M3 Messenger, Inc. and may be reproduced or transmitted in any form or by any means, electronic, mechanical, photocopying, recording, or by any information storage and retrieval system, without the prior written permission of M3 Messenger, Inc. All other trademarks and registered trademarks are the property of their respective owners.

INTERIOR - COMMUNITY WALL



PEGS PLAN VIEW

Scale: 1 : 1



PEGS PROFILE VIEW

Scale: 1 : 1

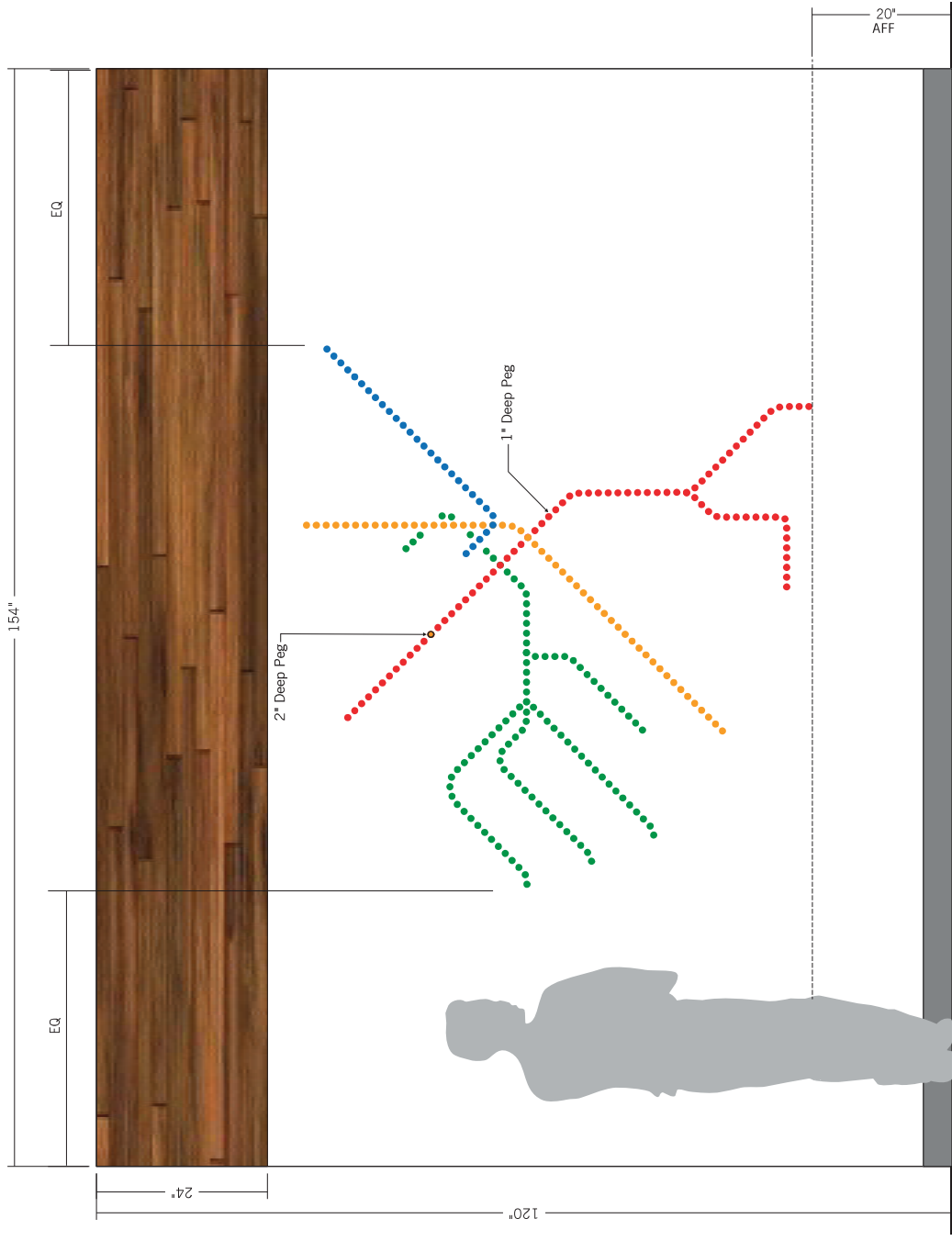
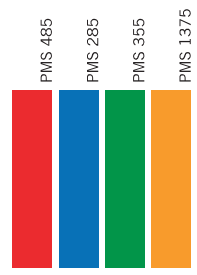
A. 1" DEEP WALL PEGS
 Qty: 261
 1" Deep acrylic pegs with a 1" diameter to be laser cut and painted to match corresponding transit line.

- 261 TOTAL PEGS**
- 77 = Red (Paint to match PMS 485)
 - 30 = Blue (Paint to match PMS 285)
 - 103 = Green (Paint to match PMS 355)
 - 51 = Orange (Paint to match PMS 1375)

MOUNT
 Pegs mounted to finished wall using a paper pattern and with VHB adhesive.

B. 2" DEEP WALL PEG
 Qty: 1
 2" Deep acrylic pegs with a 1" diameter to be laser cut and painted to highlight the Amazon Campus location. Entire peg painted black with an inner circle painted orange to match PMS 1375C.

MOUNT
 Peg will be pin mounted to finished wall using a paper pattern.



ELEVATION

Scale: 3/4" = 1'-0"