

EF Education First

EF EDUCATION FIRST



FINAL DEVELOPMENT PLAN  
GRAPHIC APPENDIX

10.18.2011















## 7.0 APPENDIX OF GRAPHIC MATERIALS

- 7.10 Locus Map
- 7.11 Intermediate Scale Map
  
- 7.20 Development Parcel
  
- 7.30 Existing Site Context and Land Use Plan
- 7.31 Site Photo Key
- 7.32 Existing Site Photos
- 7.33 Existing Site Photos
  
- 7.40 Proposed Site Context and Land Use Plan
- 7.41 Pedestrian and Bicycle Network Plan
- 7.42 Landscape Plan
- 7.43 Utility Site Plan
  
- 7.50 Building Area Summary
  
- 7.60 Ground Floor Plan
- 7.61 Typical Parking Level Floor Plan (Levels P1-P4)
- 7.62 Typical Office Level Floor Plan (Levels 4-10)
  
- 7.70 West Elevation
- 7.71 South Elevation
- 7.72 East Elevation
- 7.73 North Elevation
- 7.74 Building Section A
- 7.75 Building Section B
- 7.76 Building Section C
- 7.77 Building Section D
  
- 7.80 Rendered View From Charles River
- 7.81 Rendered View From North Point Boulevard
- 7.82 Rendered View From Education Street
- 7.83 Rendered View From Highway Ramp

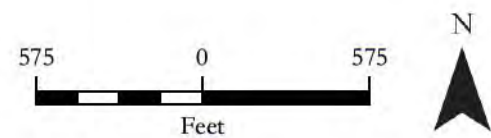


# East Cambridge

Cambridge, Massachusetts

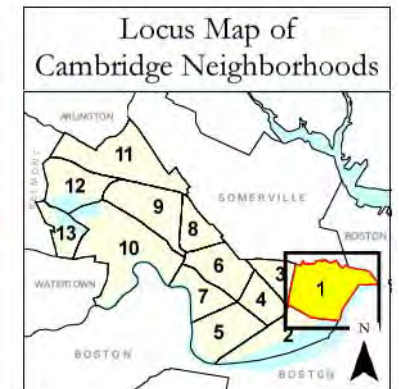
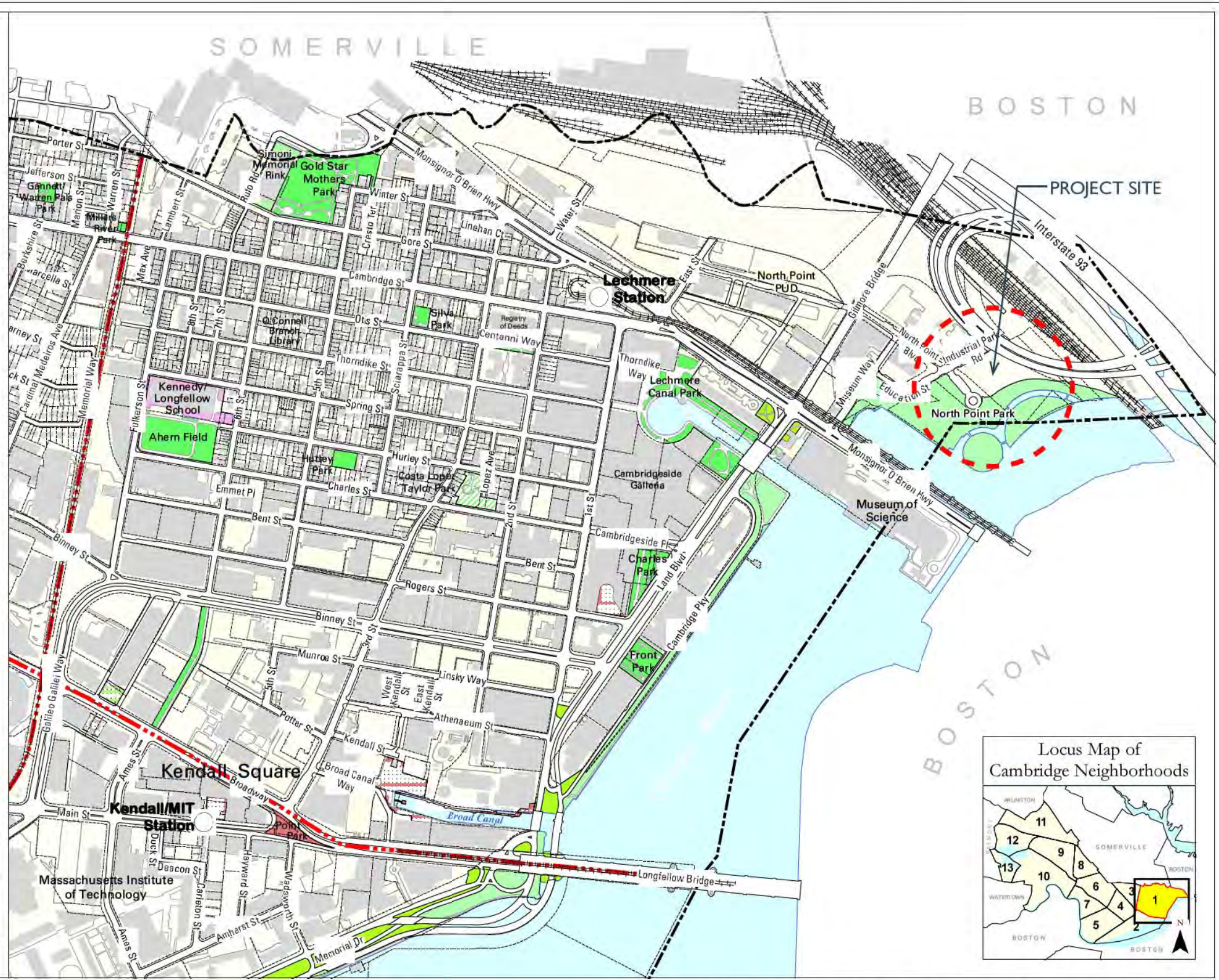
-  City Boundary
-  MBTA Subway Station
-  Neighborhood Boundaries
-  City Park or Playground
-  DCR-Owned Park
-  DCR-Owned Parkway
-  Public Plaza
-  Privately-Owned, Publicly-Accessible Park
-  Privately-Owned, Publicly-Accessible Plaza
-  Public Rooftop Garden
-  Public School Grounds
-  Park Under Development

Publicly-Accessible Park

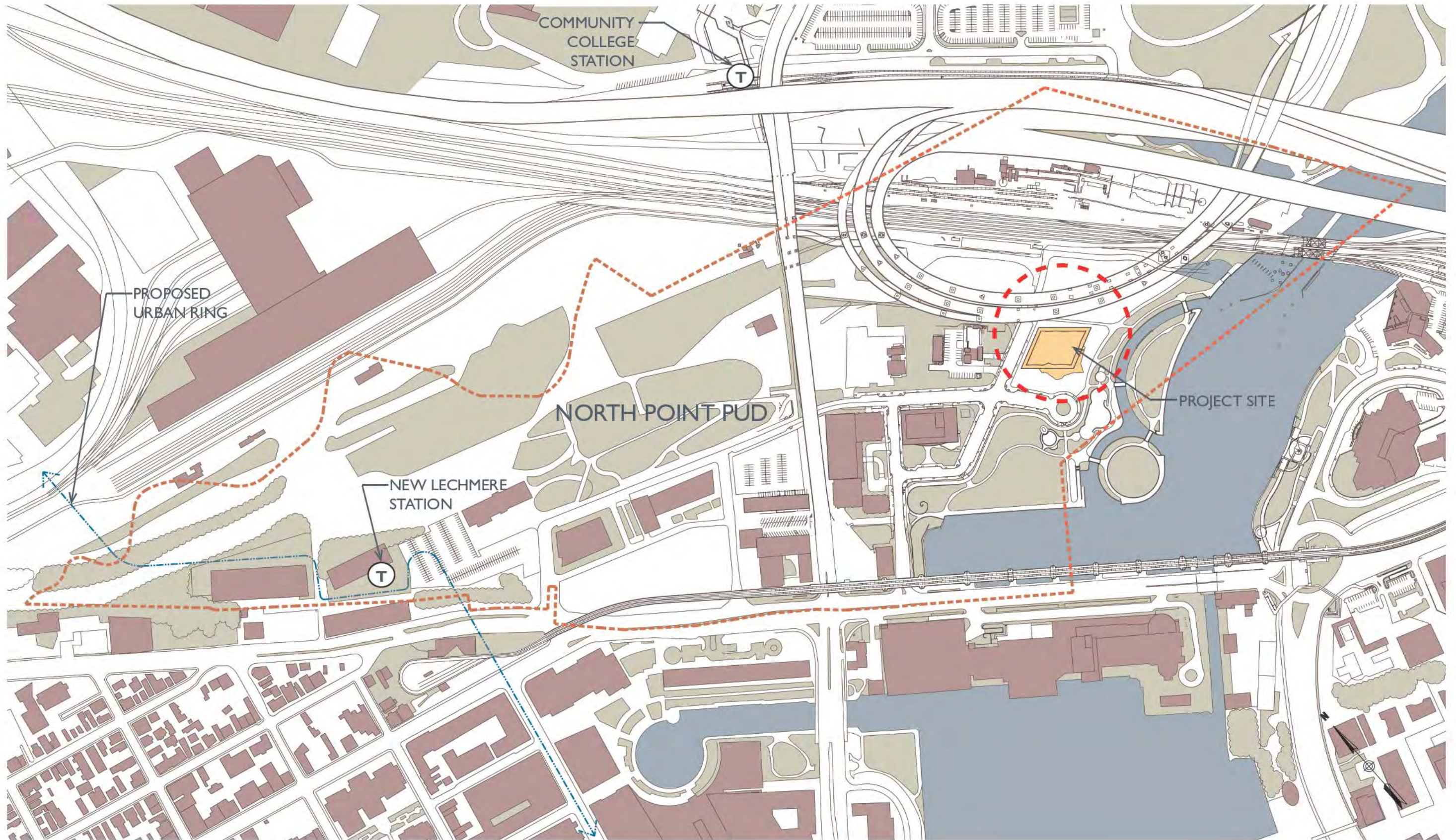


Planimetric information displayed on this map was prepared through the use of photogrammetric methods from aerial photographs taken April 17, 2003. Certain features have been updated through other methods. This map is intended for planning purposes only.

Cambridge Community Development Department  
Cambridge GIS













7.30 Existing Site Context and Land Use Plan





7.31 Site Photo Key





7.32 Existing Site Photos



A



B



C



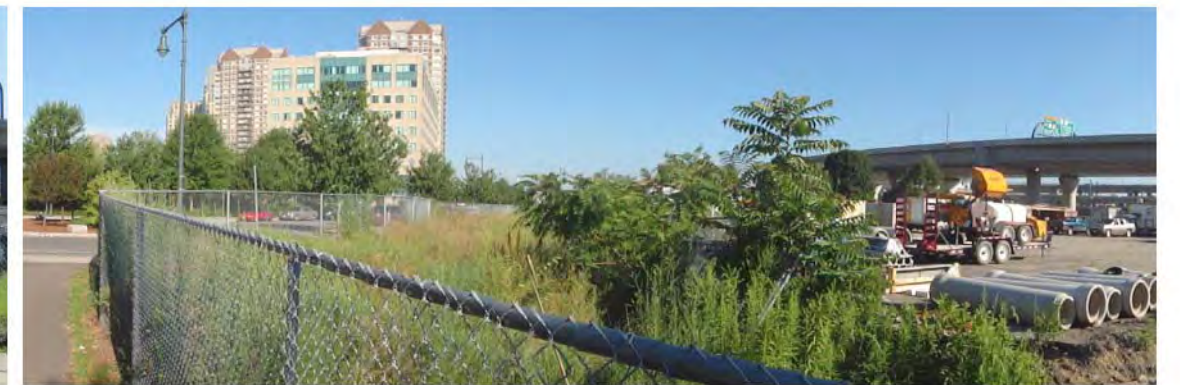
D



E



F



G



7.33 Existing Site Photos



H



I



J



K



L



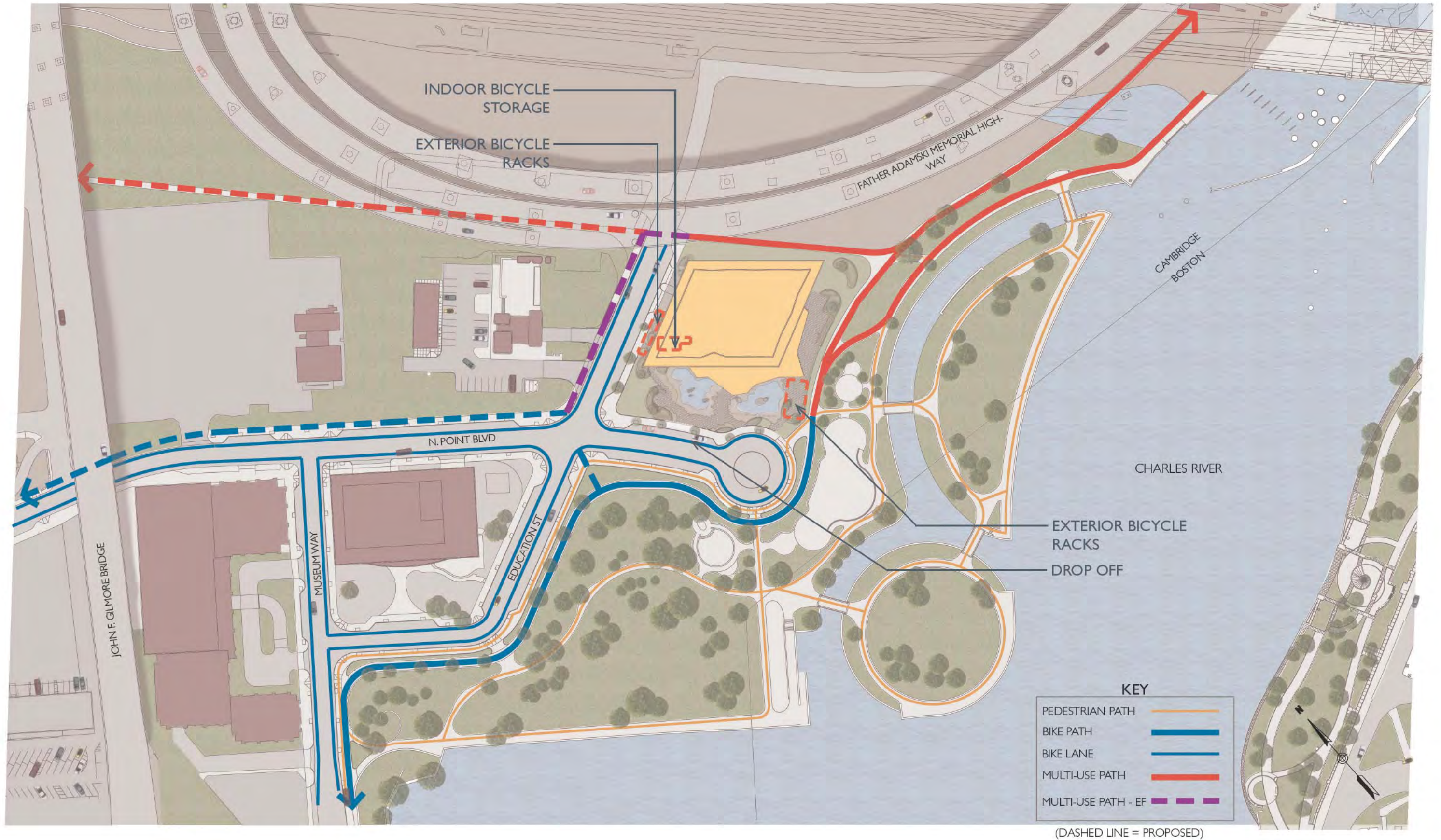
M







7.41 Pedestrian and Bicycle Network Plan



(DASHED LINE = PROPOSED)



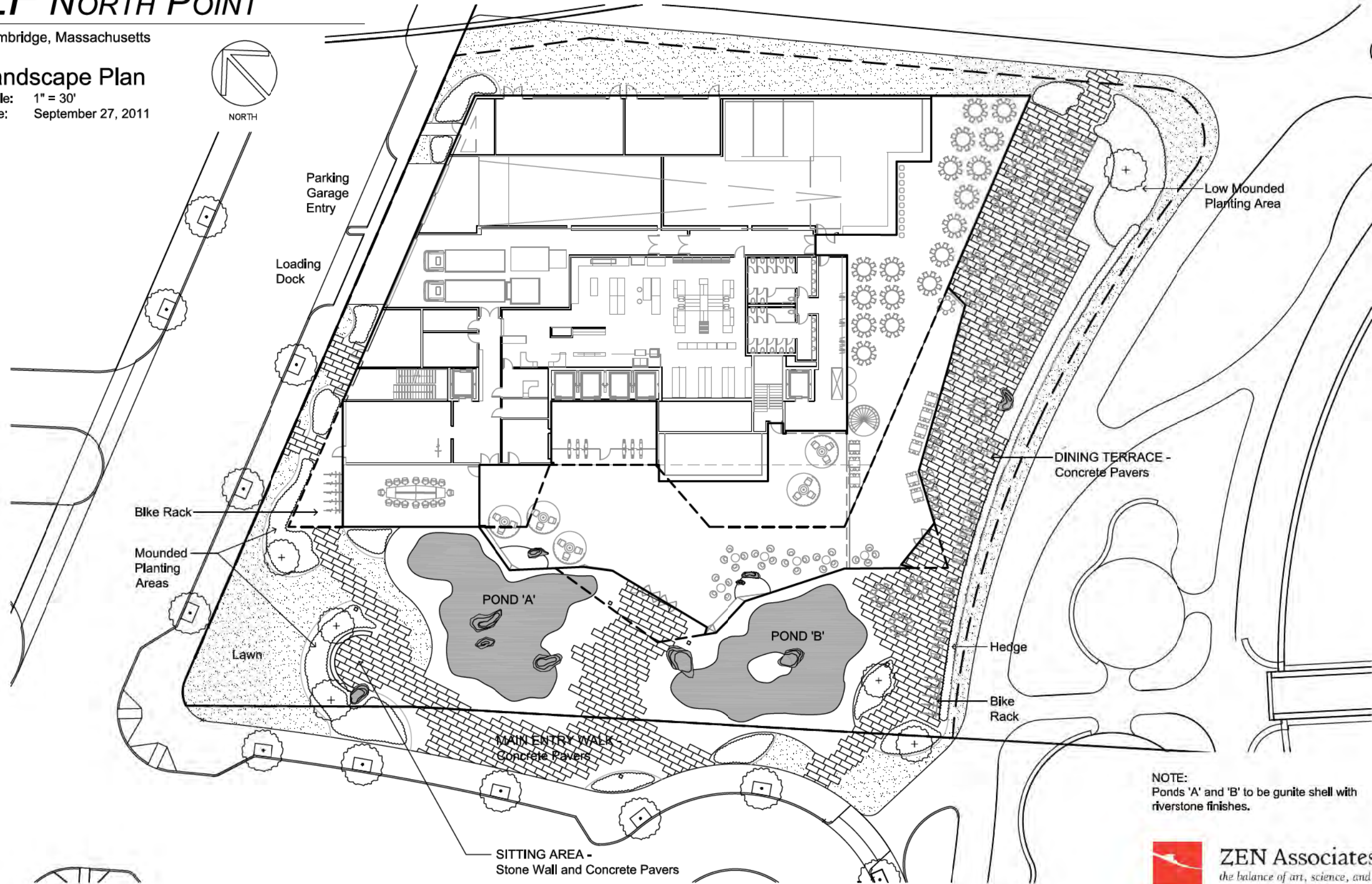
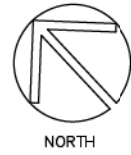
# EF NORTH POINT

Cambridge, Massachusetts

## Landscape Plan

Scale: 1" = 30'

Date: September 27, 2011



NOTE:  
Ponds 'A' and 'B' to be gunite shell with riverstone finishes.

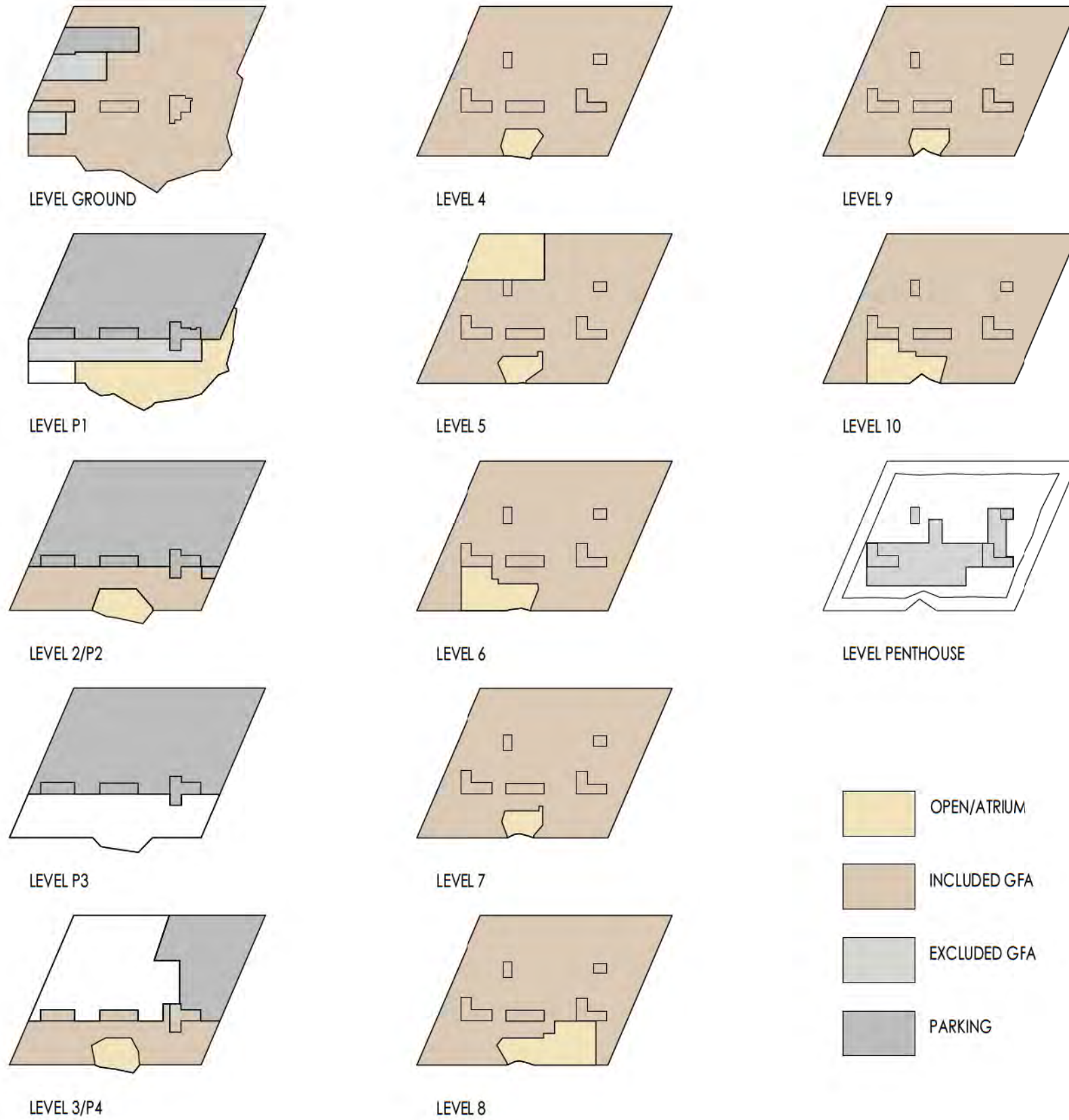


**ZEN Associates, Inc.**  
*the balance of art, science, and nature*









Building Area Summary (SF)

Level	Office	Parking	Total
Roof	0	0	0
10	25,000		25,000
9	26,500		26,500
8	25,000		25,000
7	26,500		26,500
6	25,500		25,500
5	24,500		24,500
4	26,500		26,500
P4	8,000	7,500	15,500
3/P3	500	18,500	19,000
2/P2	8,000	18,500	26,500
P1	6,000	18,500	24,500
G	28,000	2,000	30,000
<b>Totals</b>	<b>230,000</b>	<b>65,000</b>	<b>295,000</b>

SF indicated are approximate. Total will not exceed 295,000 SF

Office total includes proposed Restaurant function

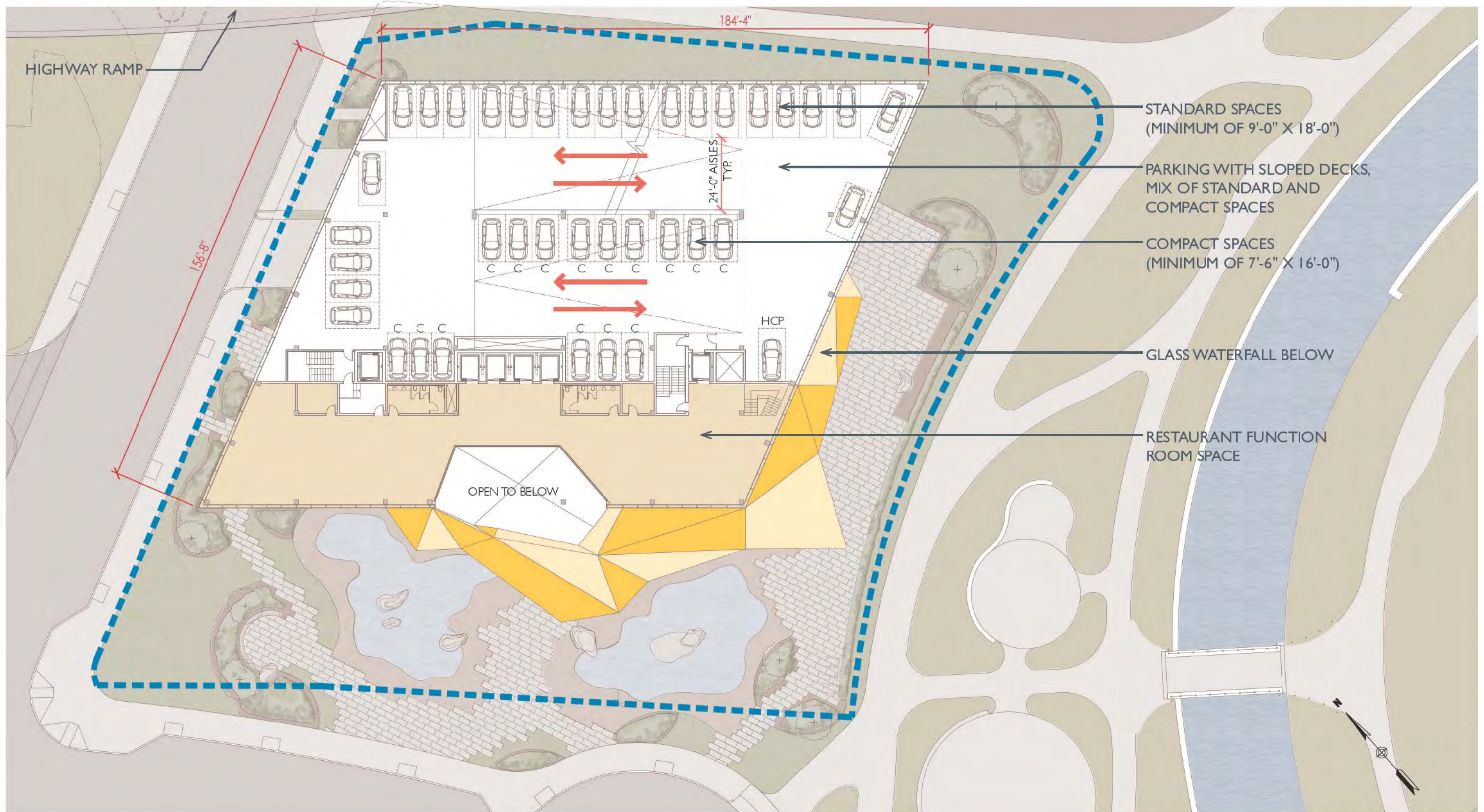


7.60 Ground Floor Plan





7.61 Typical Parking Level Floor Plan (Levels P1-P4)

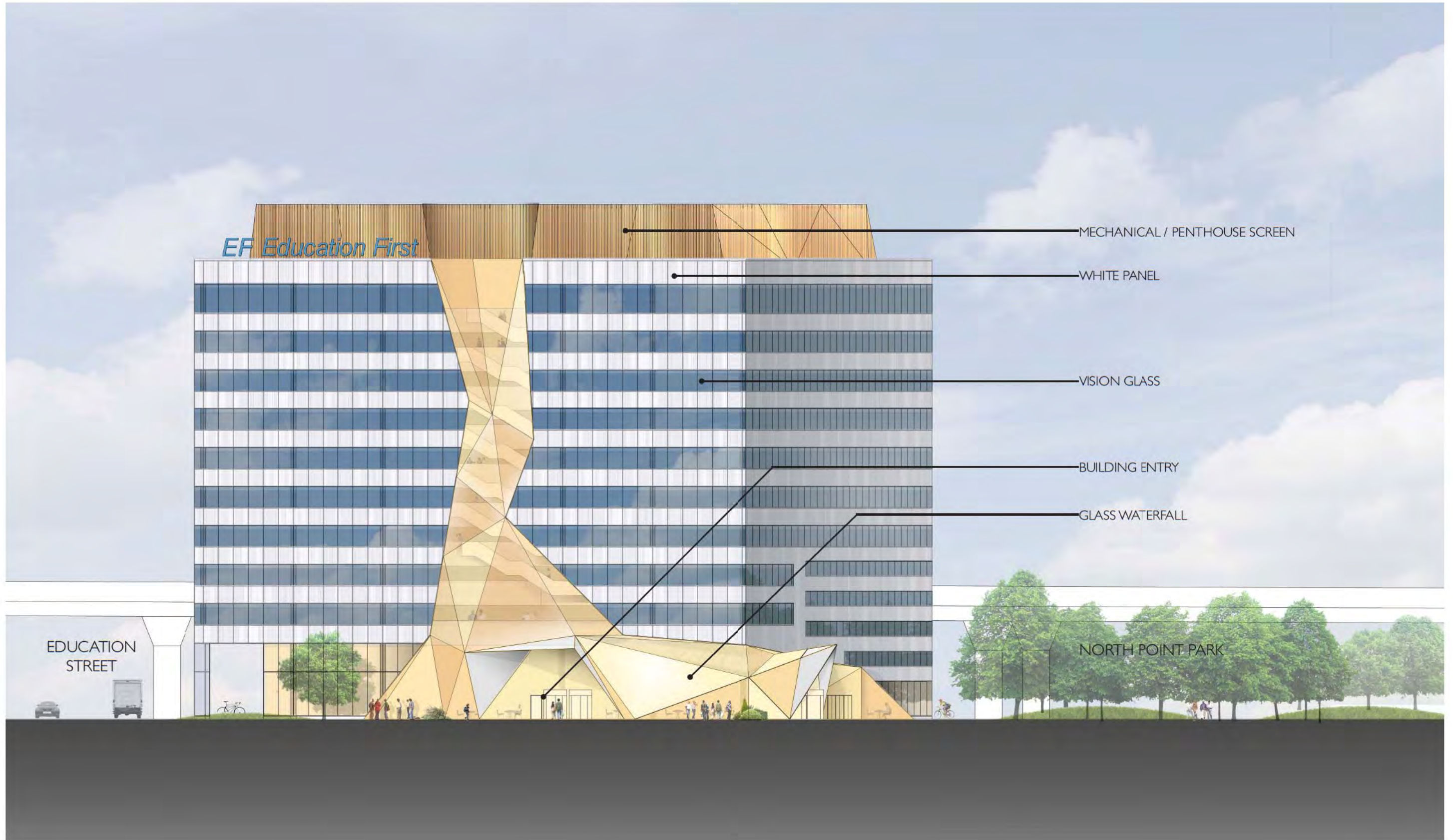








7.70 West Elevation













7.73 North Elevation

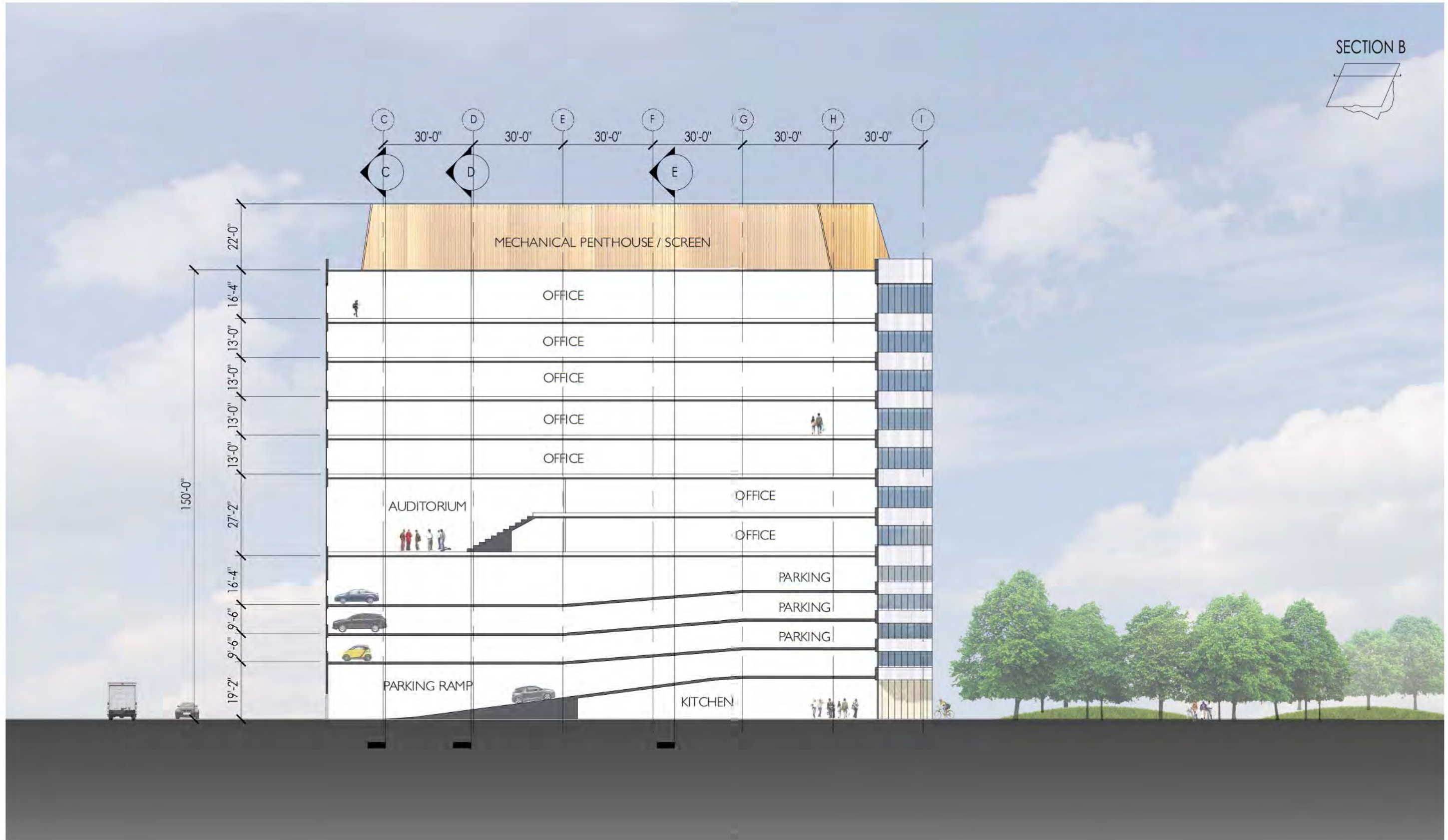






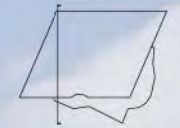


SECTION B





SECTION C





SECTION D

