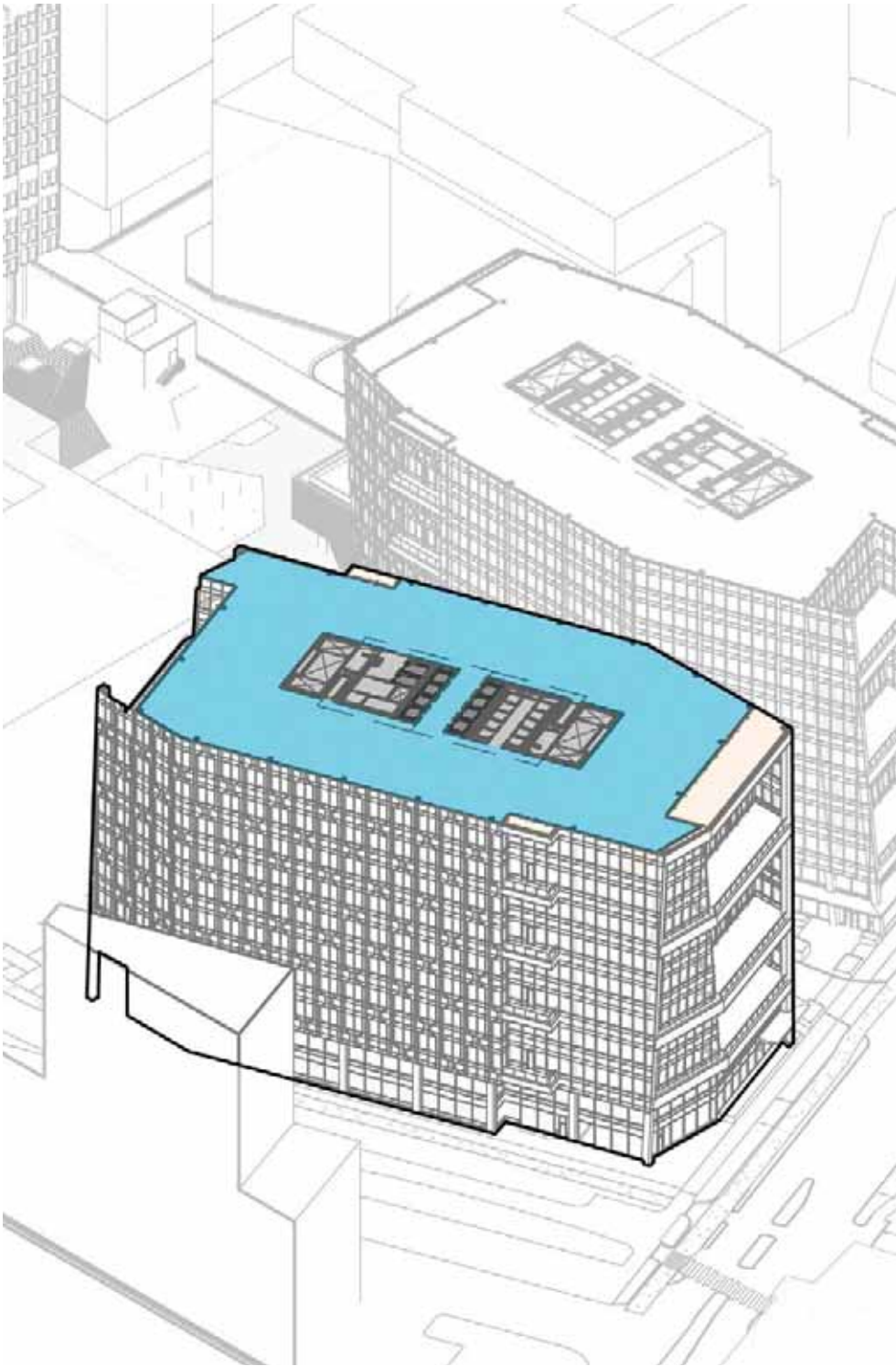


1.3.8 BUILDING PLANS
LEVEL 11



28.1K GFA LAB / OFFICE

- Lab / Office
- Lobby
- Elevator Car
- Active Use / Bike Valet
- Mechanical/Storage
- Potential Tenant Terrace



AXONOMETRIC

1.3.8 BUILDING PLANS
LEVEL 12

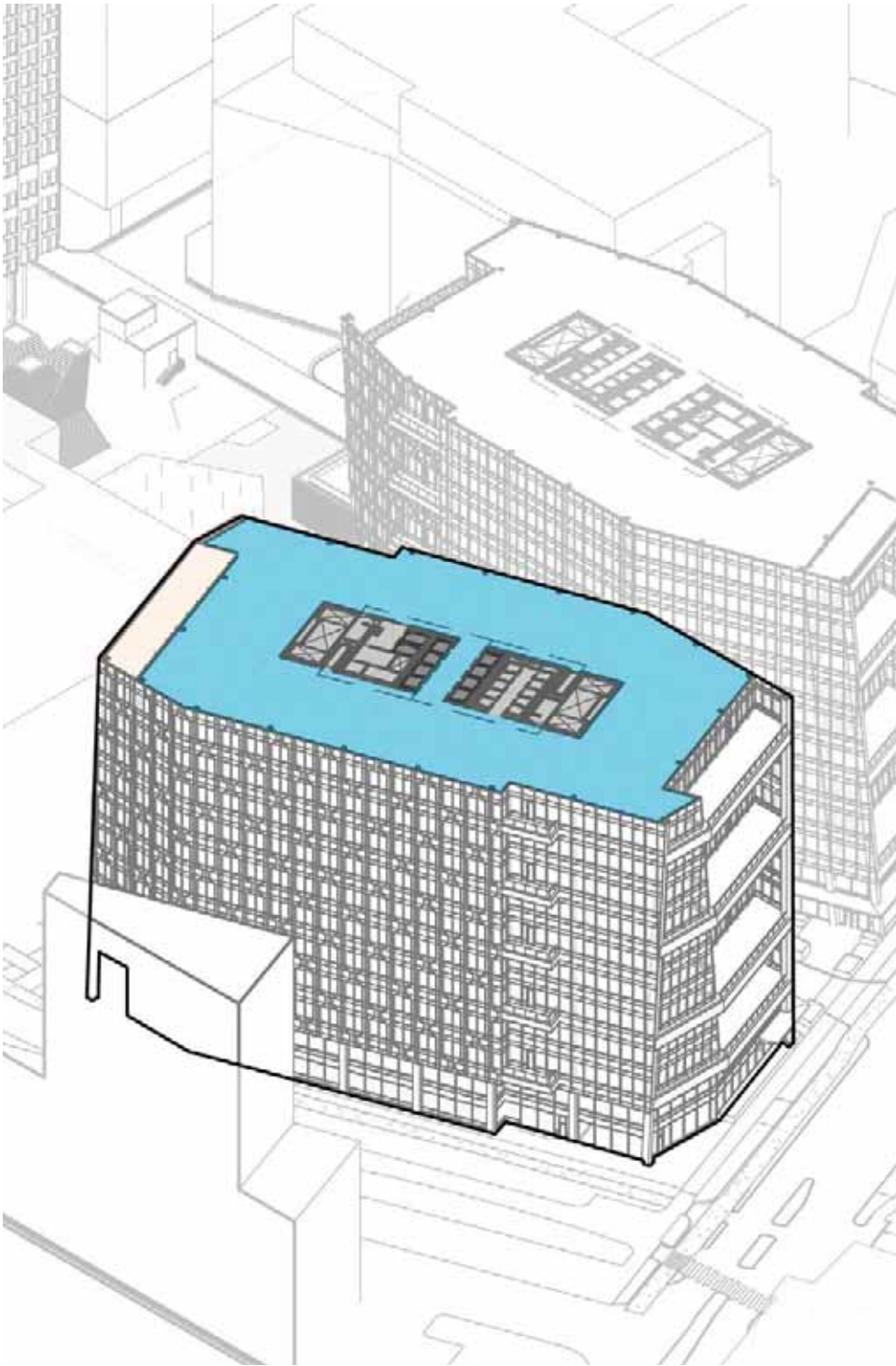


28K GFA LAB / OFFICE

- Lab / Office
- Lobby
- Elevator Car
- Active Use / Bike Valet
- Mechanical/Storage
- Potential Tenant Terrace



AXONOMETRIC



1.3.8 BUILDING PLANS
LEVEL 13

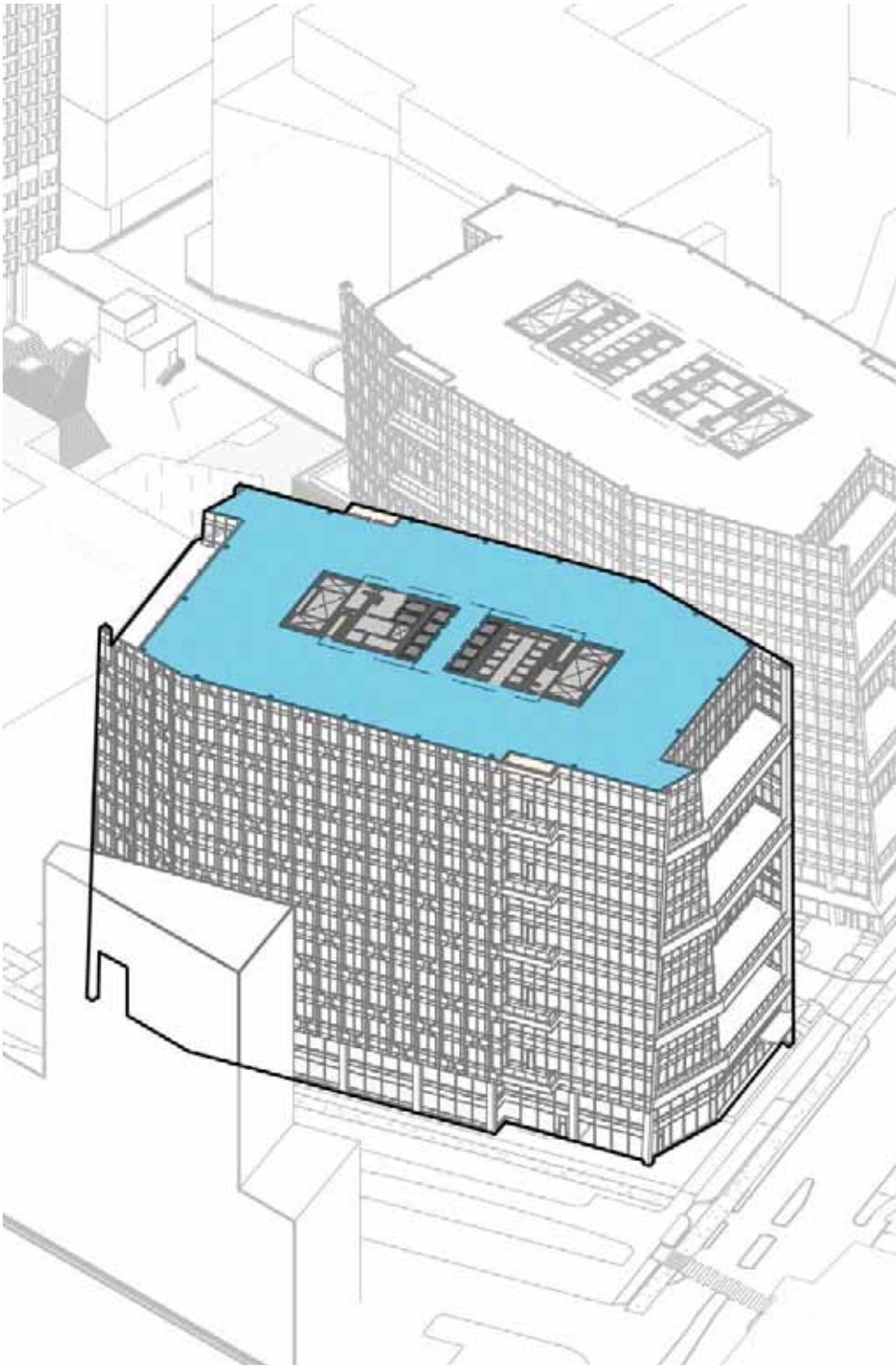


27.9K GFA LAB / OFFICE

- | | |
|--------------|--------------------------|
| Lab / Office | Active Use / Bike Valet |
| Lobby | Mechanical/Storage |
| Elevator Car | Potential Tenant Terrace |



AXONOMETRIC



1.3.8 BUILDING PLANS
LEVEL 14

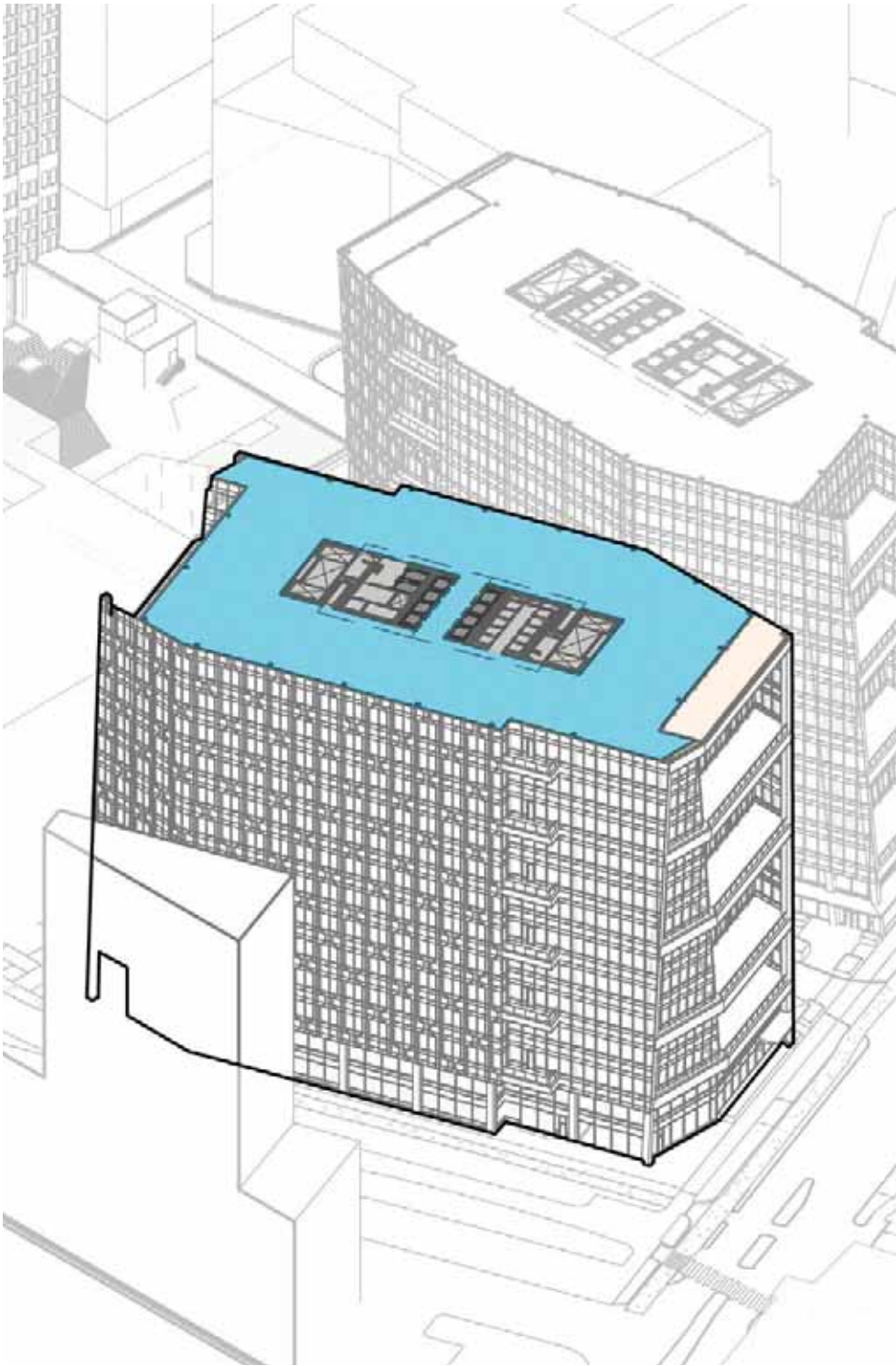


27.8K GFA LAB / OFFICE

- Lab / Office
- Lobby
- Elevator Car
- Active Use / Bike Valet
- Mechanical/Storage
- Potential Tenant Terrace

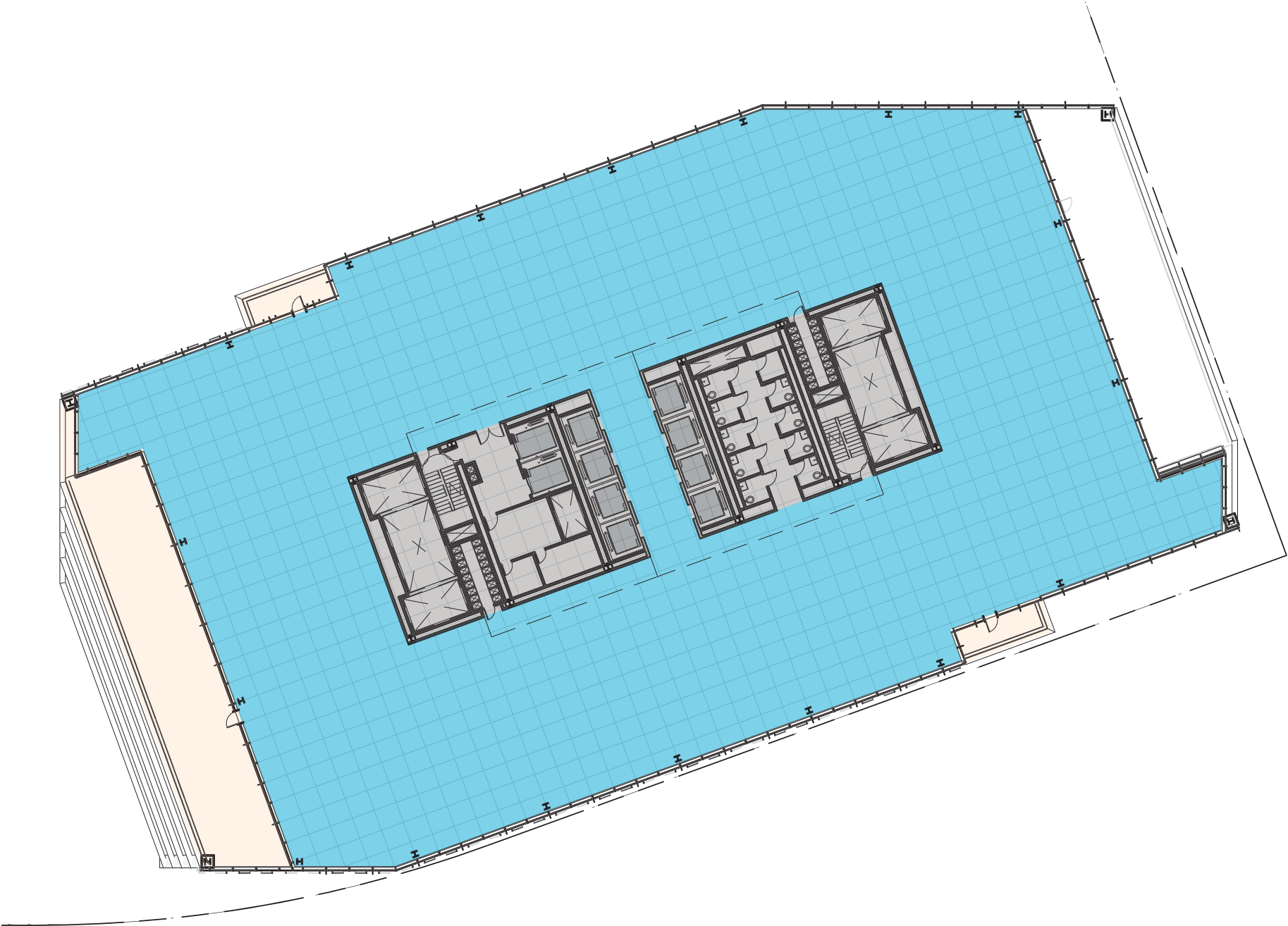


AXONOMETRIC



1.3.8 BUILDING PLANS

LEVEL 15

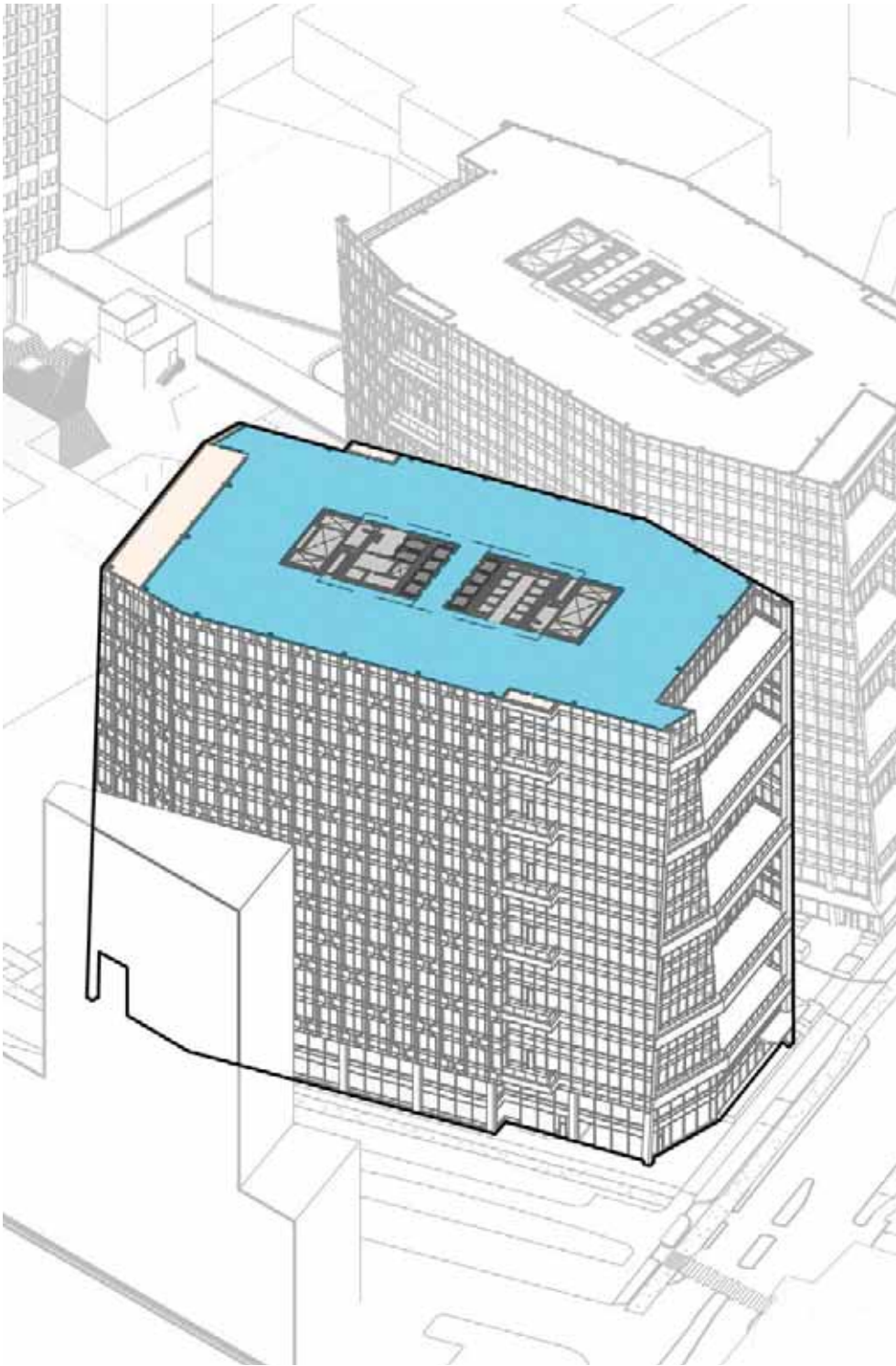


27.7K GFA LAB / OFFICE

- Lab / Office
- Lobby
- Elevator Car
- Active Use / Bike Valet
- Mechanical/Storage
- Potential Tenant Terrace



AXONOMETRIC



1.3.8 BUILDING PLANS

LEVEL 16

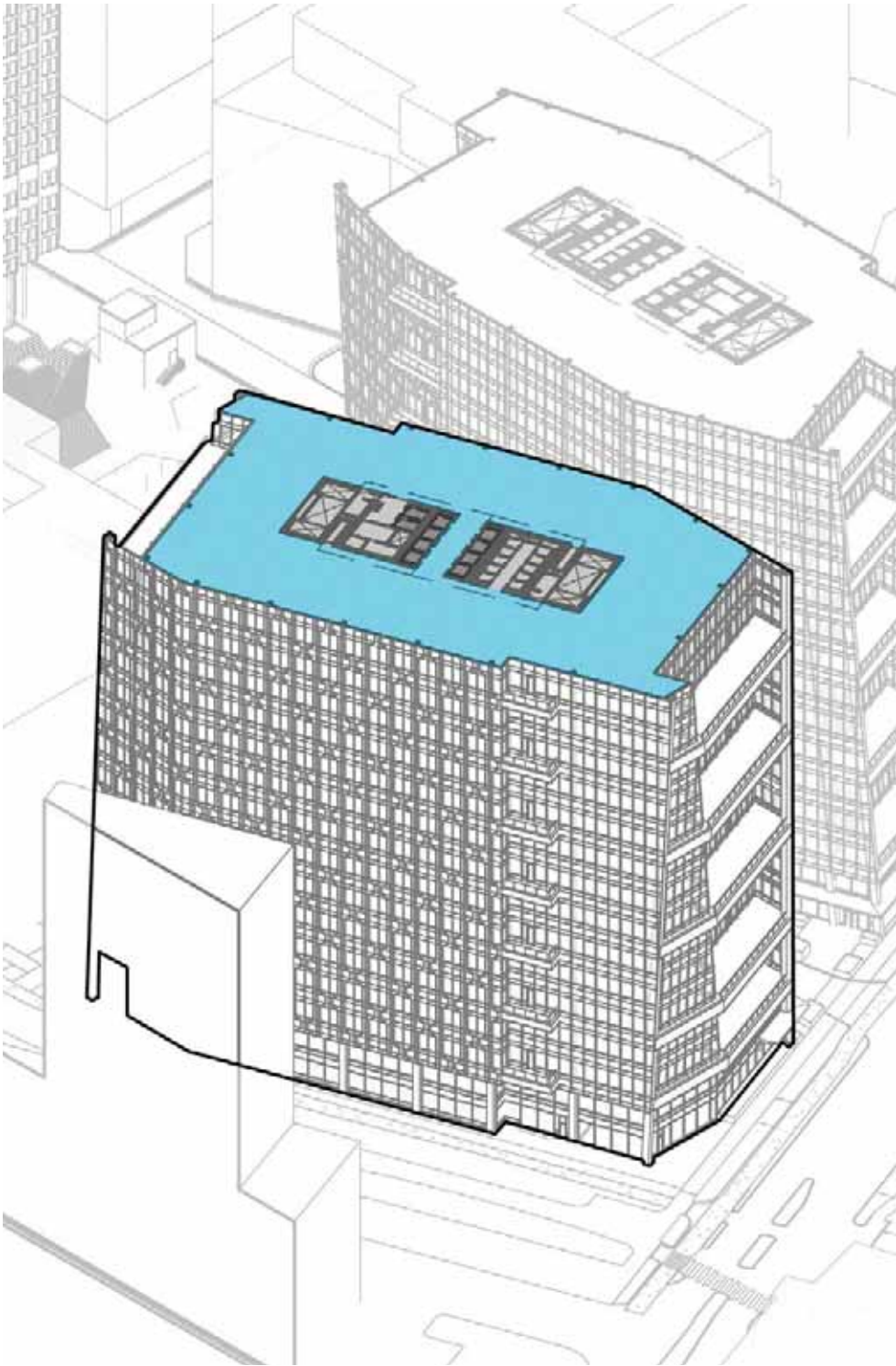


27.6K GFA LAB / OFFICE

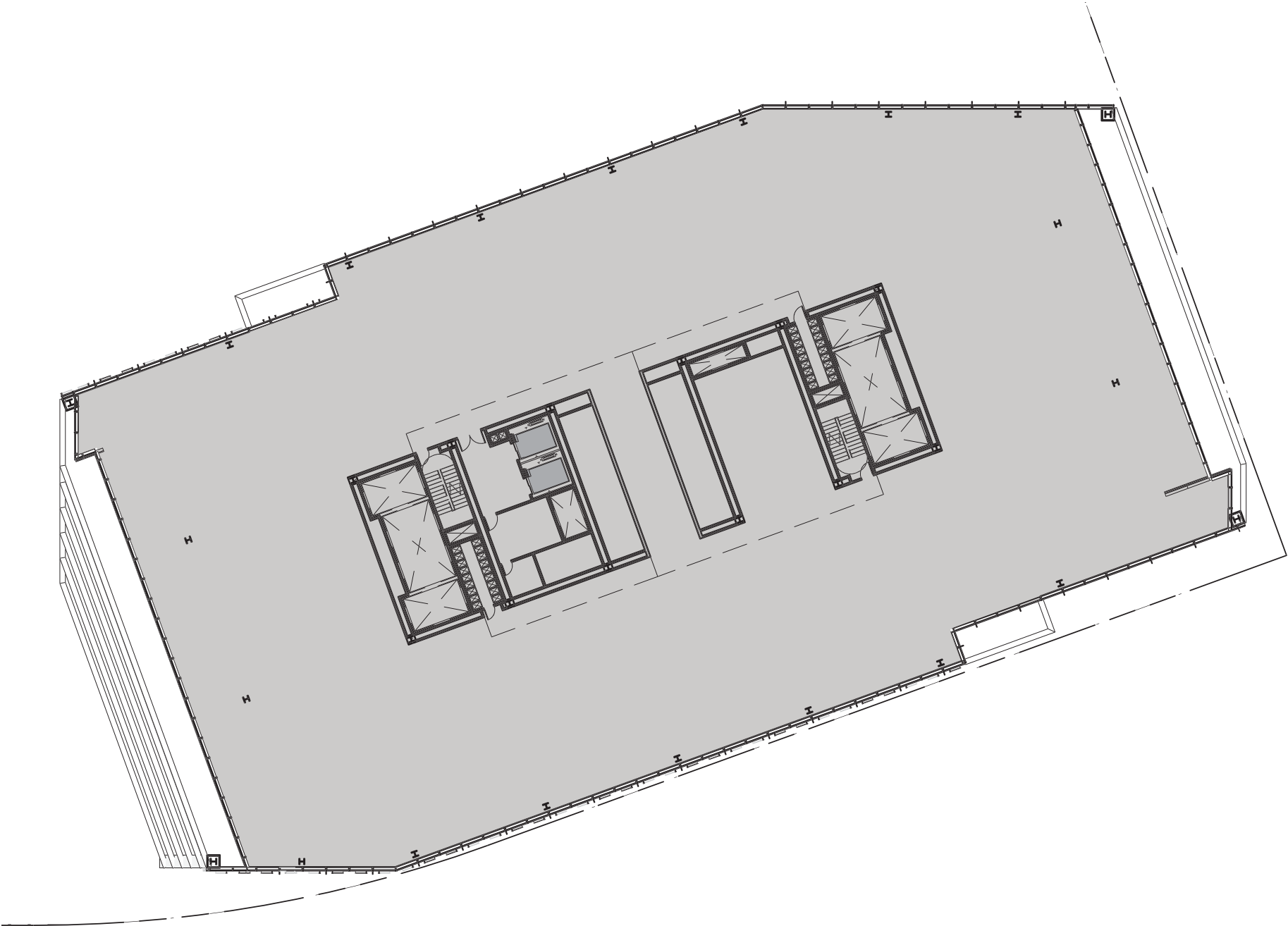
- | | |
|--------------|--------------------------|
| Lab / Office | Active Use / Bike Valet |
| Lobby | Mechanical/Storage |
| Elevator Car | Potential Tenant Terrace |



AXONOMETRIC



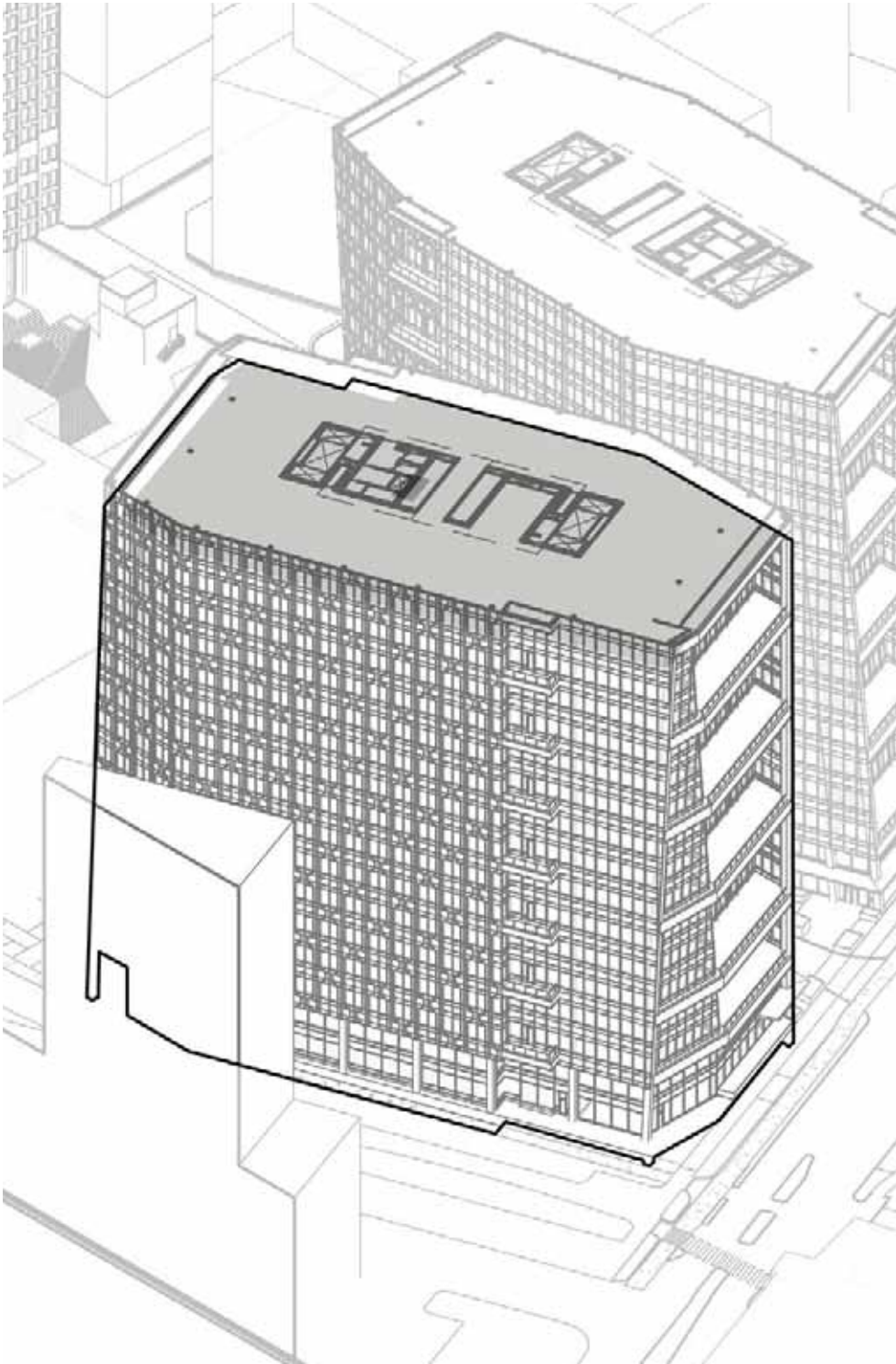
1.3.8 BUILDING PLANS
LEVEL 17



- | | |
|--------------|--------------------------|
| Lab / Office | Active Use / Bike Valet |
| Lobby | Mechanical/Storage |
| Elevator Car | Potential Tenant Terrace |

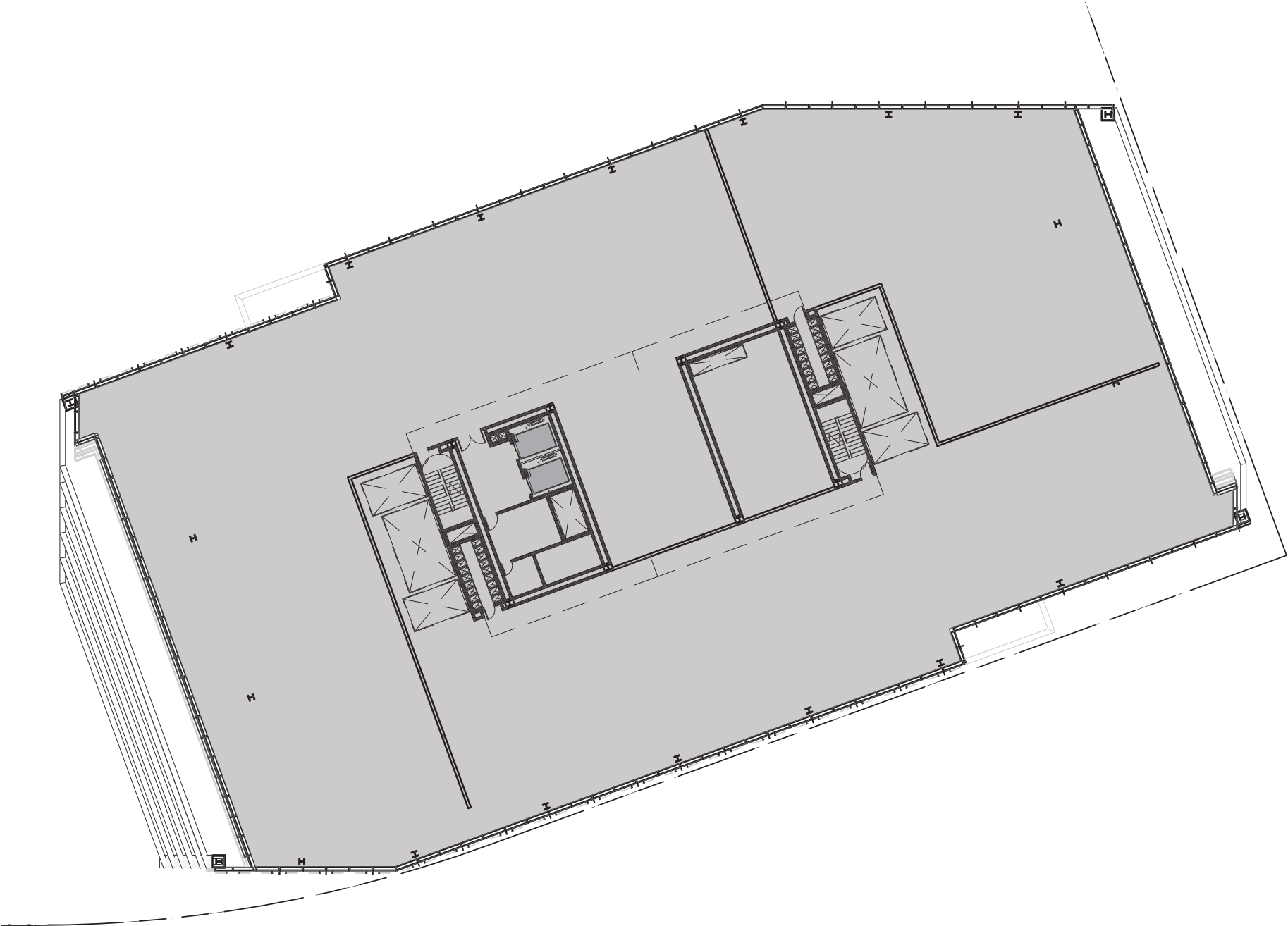


AXONOMETRIC



1.3.8 BUILDING PLANS

LEVEL 18



- Lab / Office

Lobby

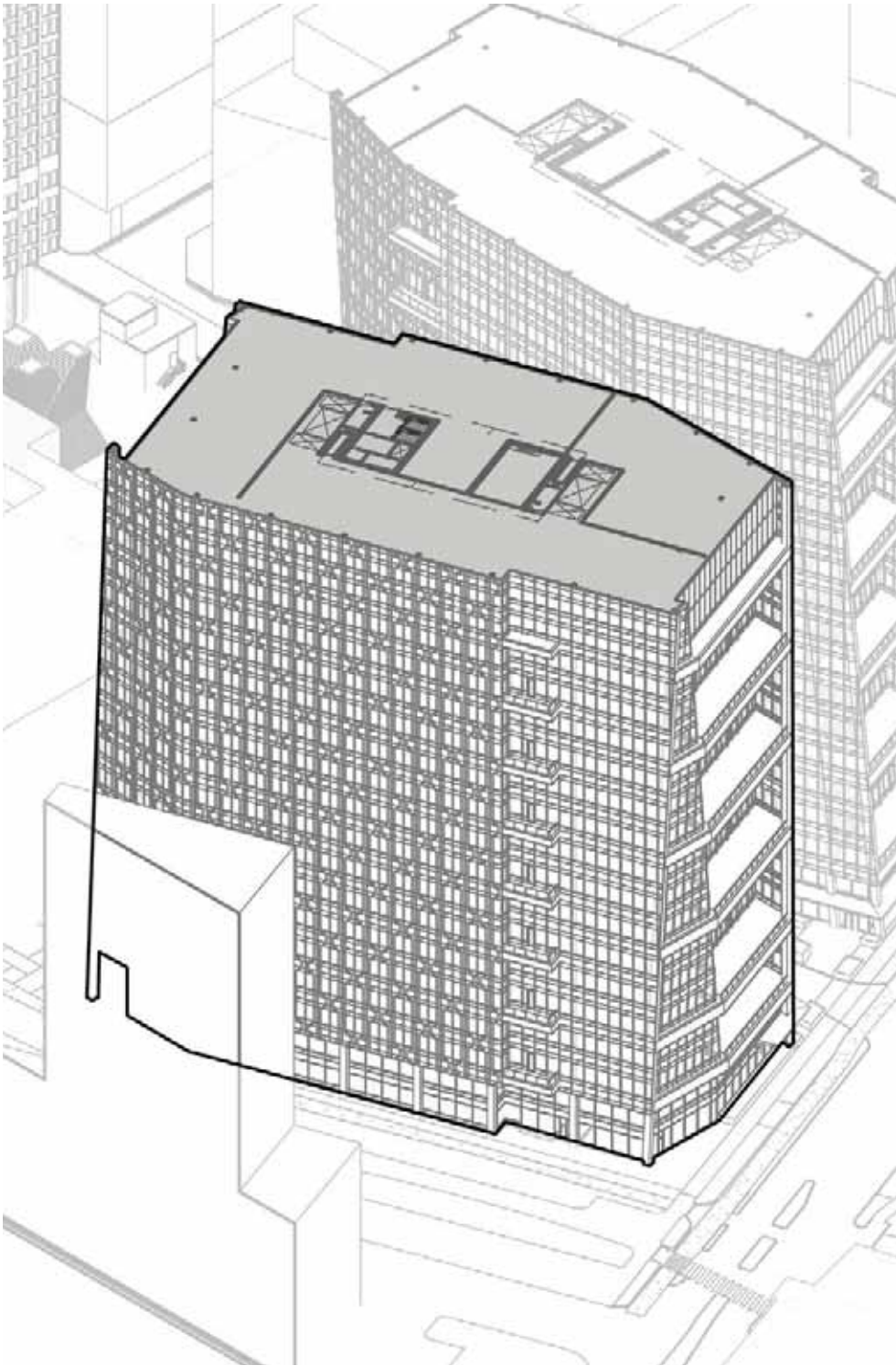
Elevator Car
- Active Use / Bike Valet

Mechanical/Storage

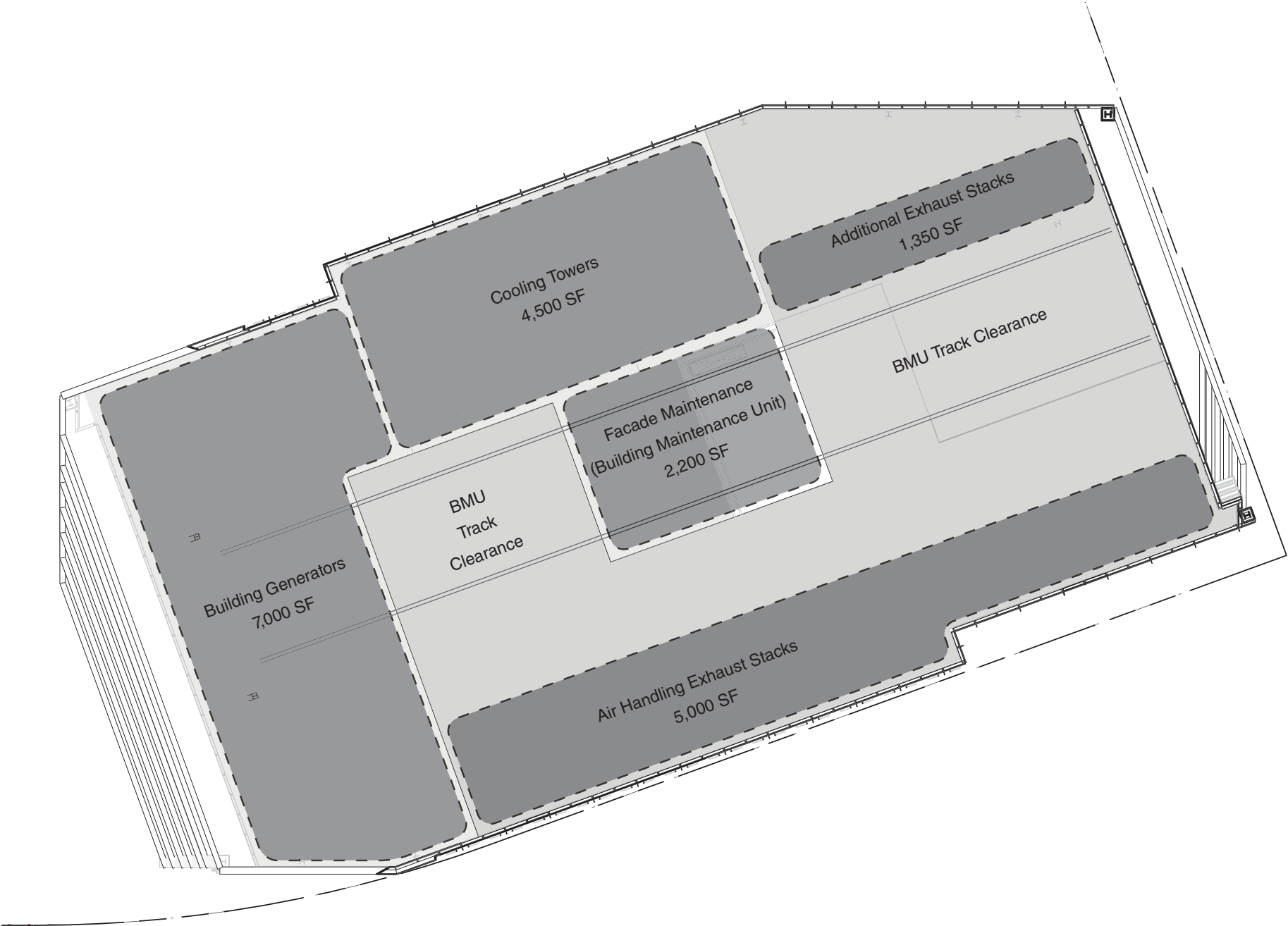
Potential Tenant Terrace



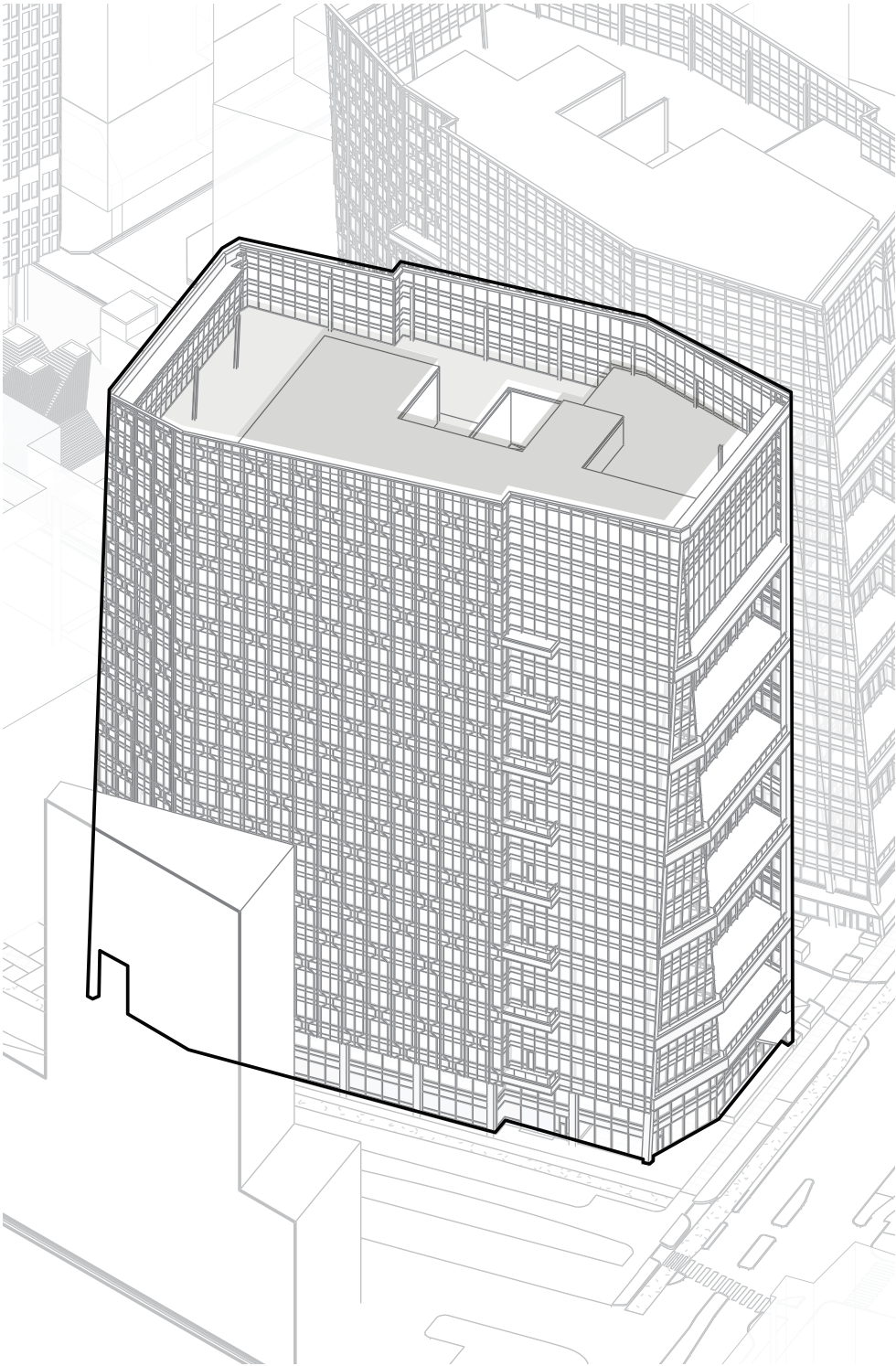
AXONOMETRIC



1.3.8 BUILDING PLANS
ROOF LEVEL



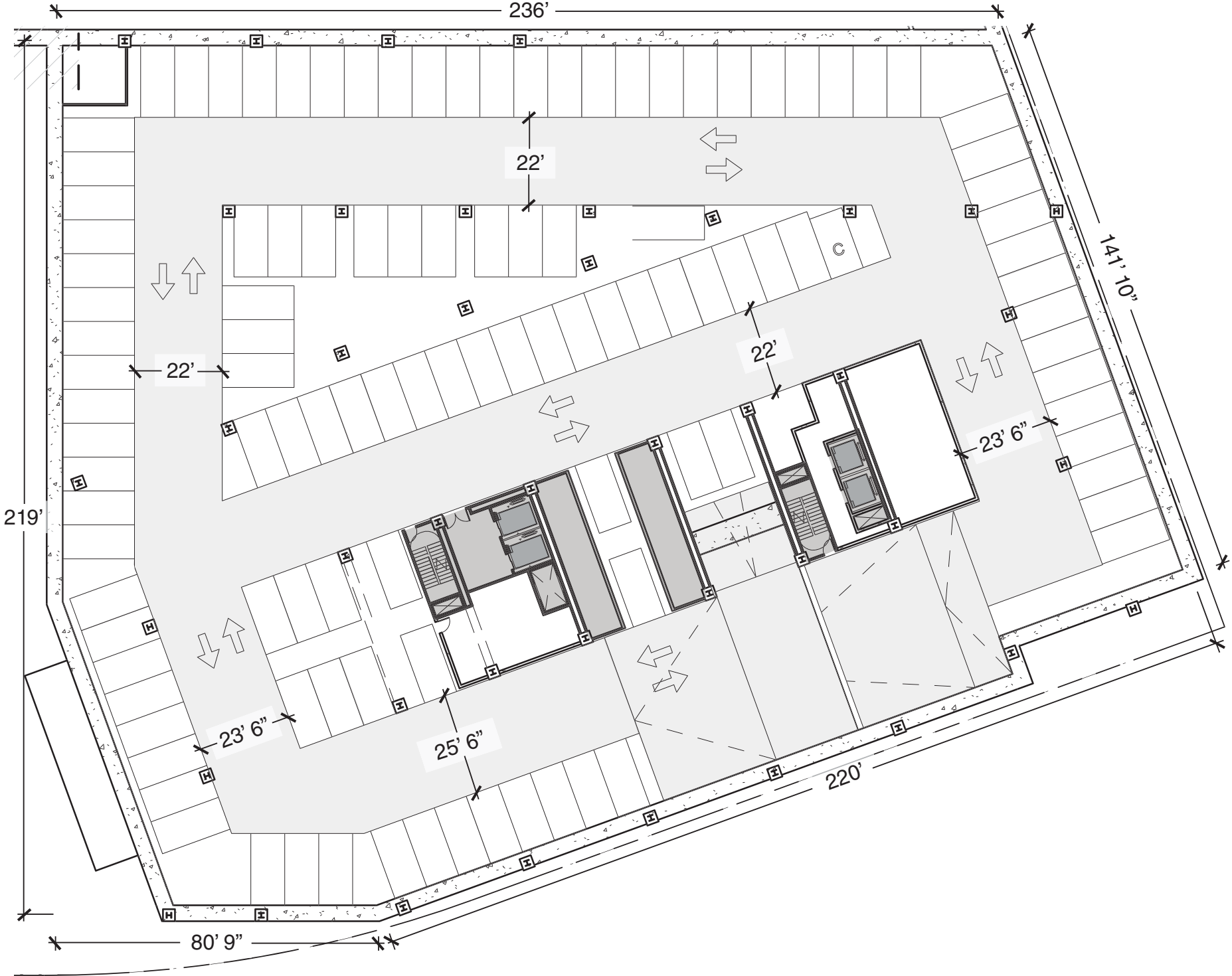
- | | |
|--------------|--------------------------|
| Lab / Office | Active Use / Bike Valet |
| Lobby | Mechanical/Storage |
| Elevator Car | Potential Tenant Terrace |



AXONOMETRIC

1.3.8 BUILDING PLANS

BELOW GRADE LEVEL B1

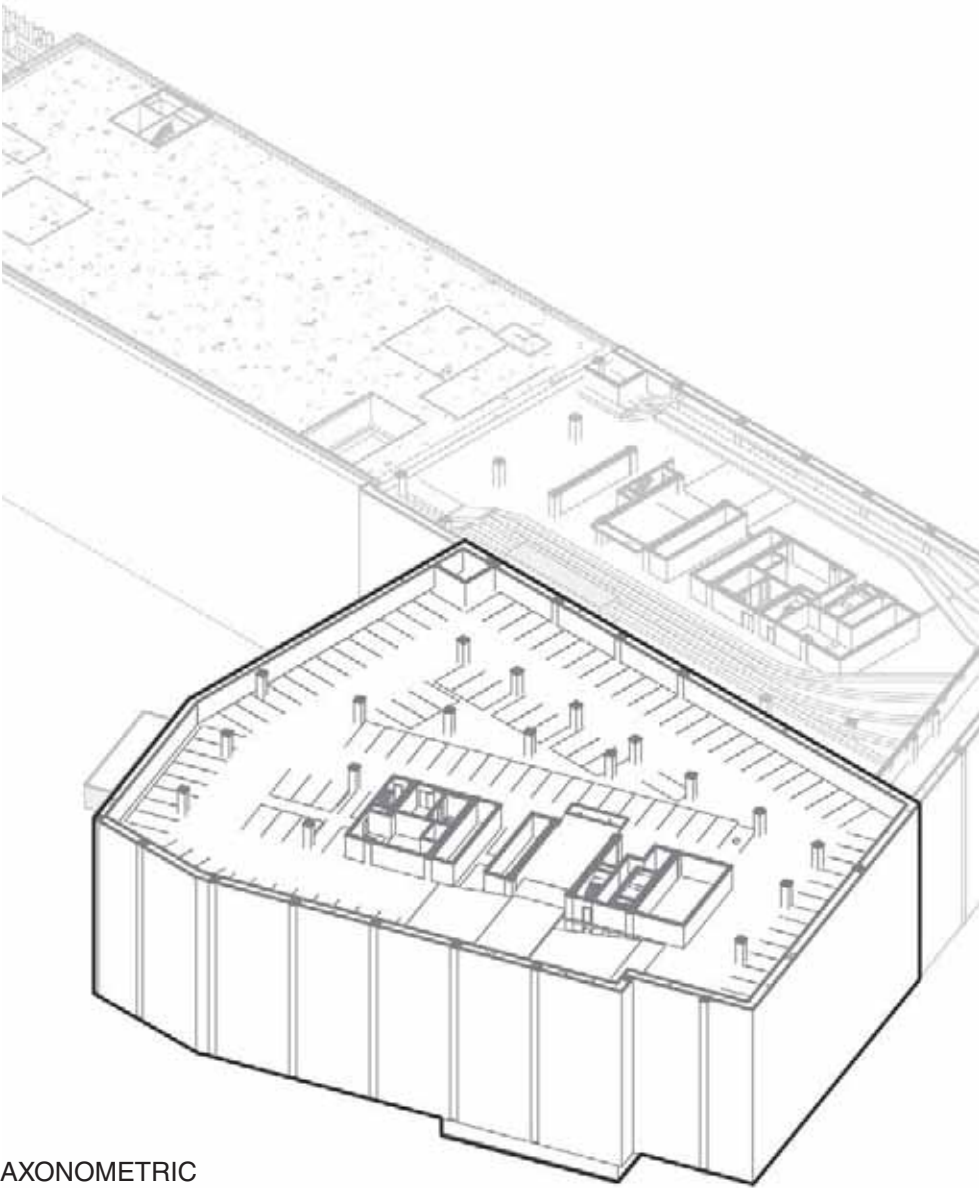


106 REGULAR + 1 COMPACT PARKING SPOTS
*NOTE: Up to a total of 1,540 parking spaces may be provided across all levels in both garages.

- | | |
|--------------|--------------------------|
| Lab / Office | Active Use / Bike Valet |
| Lobby | Mechanical/Storage |
| Elevator Car | Potential Tenant Terrace |



250 BINNEY STREET

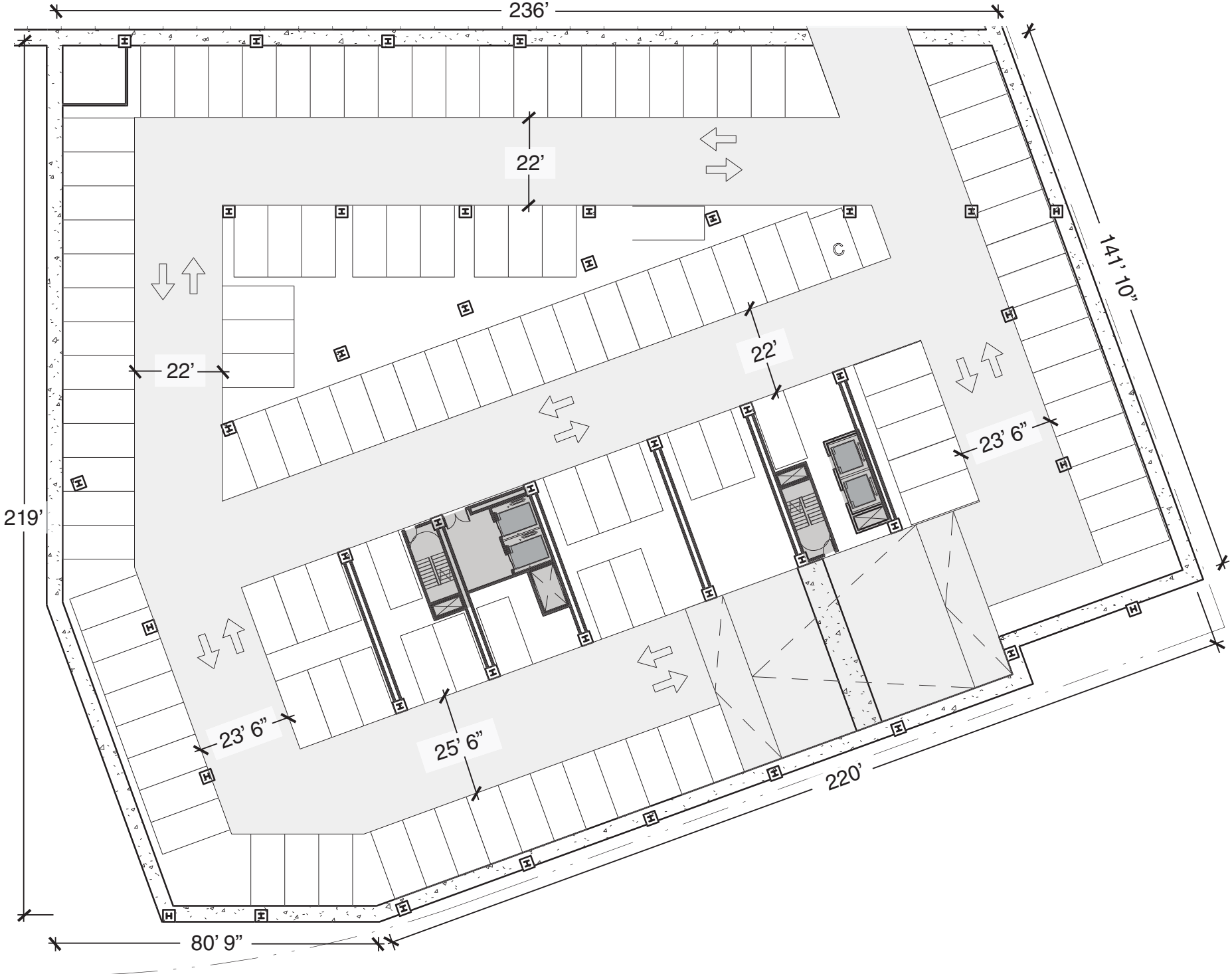


AXONOMETRIC

VEHICLE PARKING NARRATIVE: PHASED DELIVERY OF THE PARKING GARAGES BENEATH 290 AND 250 BINNEY STREET WILL TAKE PLACE ACCORDING TO THE PHASED DELIVERY SCHEDULES OF THE ASSOCIATED BUILDINGS. IT IS ANTICIPATED THAT THE GARAGES WILL SERVE NEW COMMERCIAL TENANTS BASED AT 290 AND 250 BINNEY STREET, RESIDENTS AT 135 BROADWAY, AND COMMERCIAL TENANTS FROM THE EXISTING BLUE GARAGE.

1.3.8 BUILDING PLANS

BELOW GRADE LEVEL B2



123 REGULAR + 1 COMPACT PARKING SPOTS
*NOTE: Up to a total of 1,540 parking spaces may be provided across all levels in both garages.

- Lab / Office

Lobby

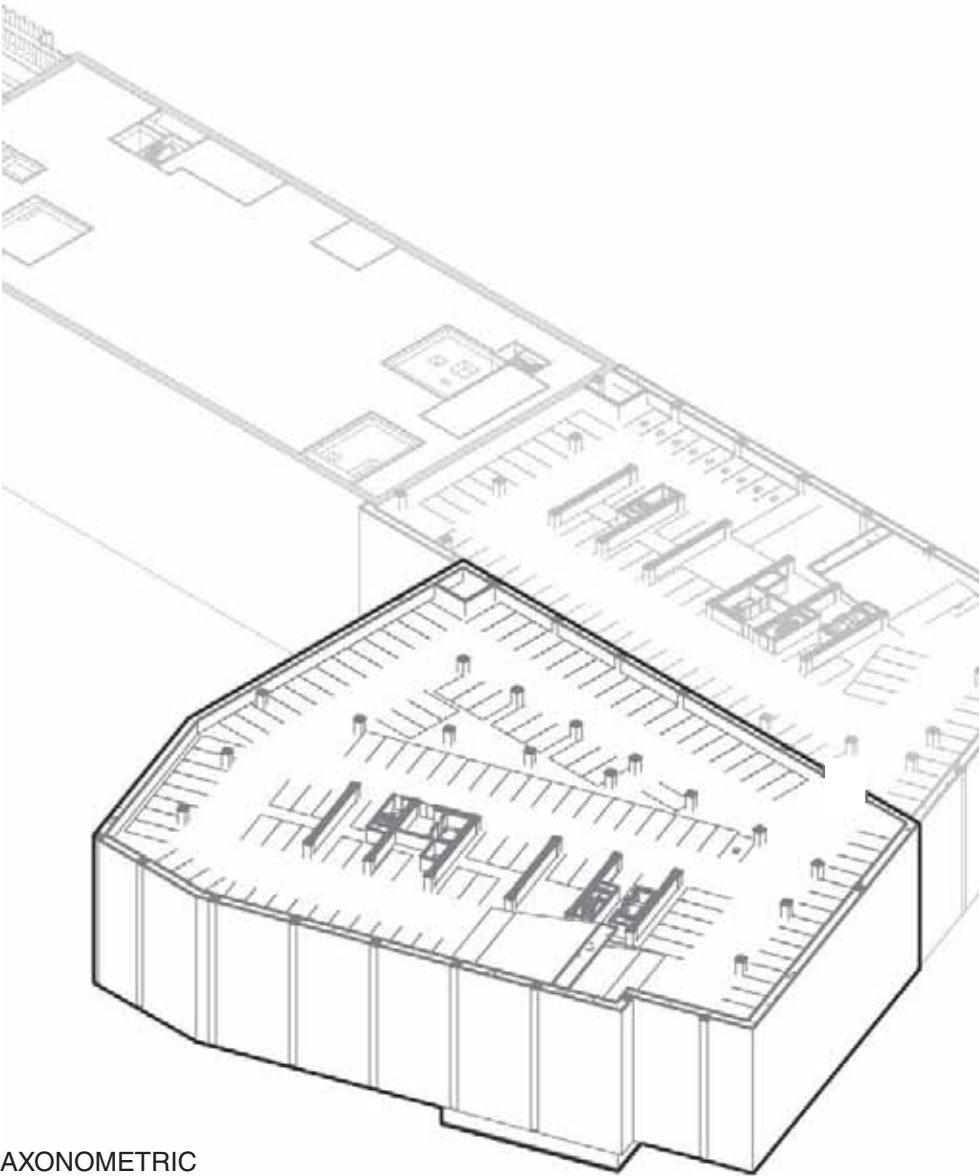
Elevator Car
- Active Use / Bike Valet

Mechanical/Storage

Potential Tenant Terrace



250 BINNEY STREET

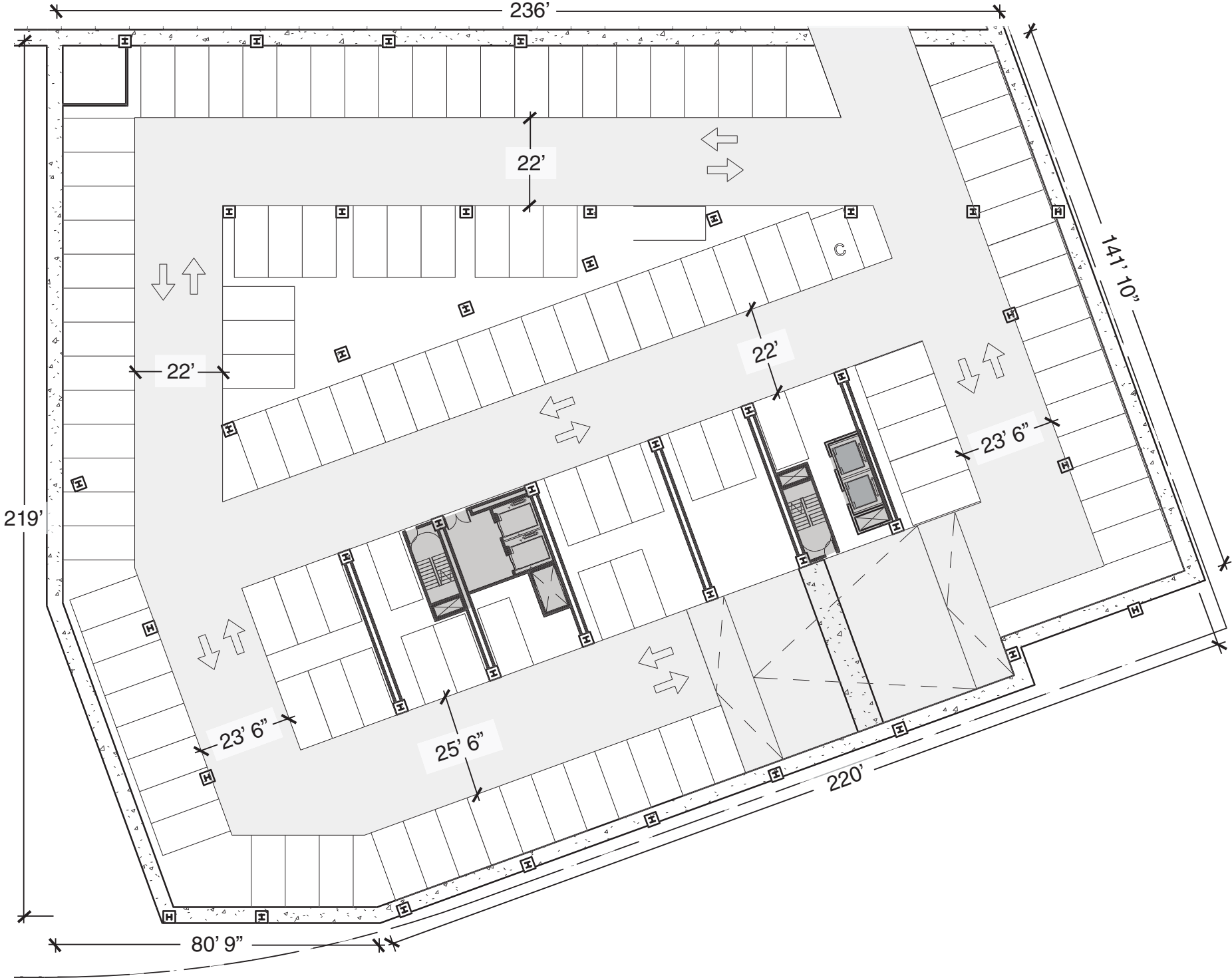


AXONOMETRIC

VEHICLE PARKING NARRATIVE: PHASED DELIVERY OF THE PARKING GARAGES BENEATH 290 AND 250 BINNEY STREET WILL TAKE PLACE ACCORDING TO THE PHASED DELIVERY SCHEDULES OF THE ASSOCIATED BUILDINGS. IT IS ANTICIPATED THAT THE GARAGES WILL SERVE NEW COMMERCIAL TENANTS BASED AT 290 AND 250 BINNEY STREET, RESIDENTS AT 135 BROADWAY, AND COMMERCIAL TENANTS FROM THE EXISTING BLUE GARAGE.

1.3.8 BUILDING PLANS

BELOW GRADE LEVEL B3



123 REGULAR + 1 COMPACT PARKING SPOTS
*NOTE: Up to a total of 1,540 parking spaces may be provided across all levels in both garages.

- Lab / Office

Lobby

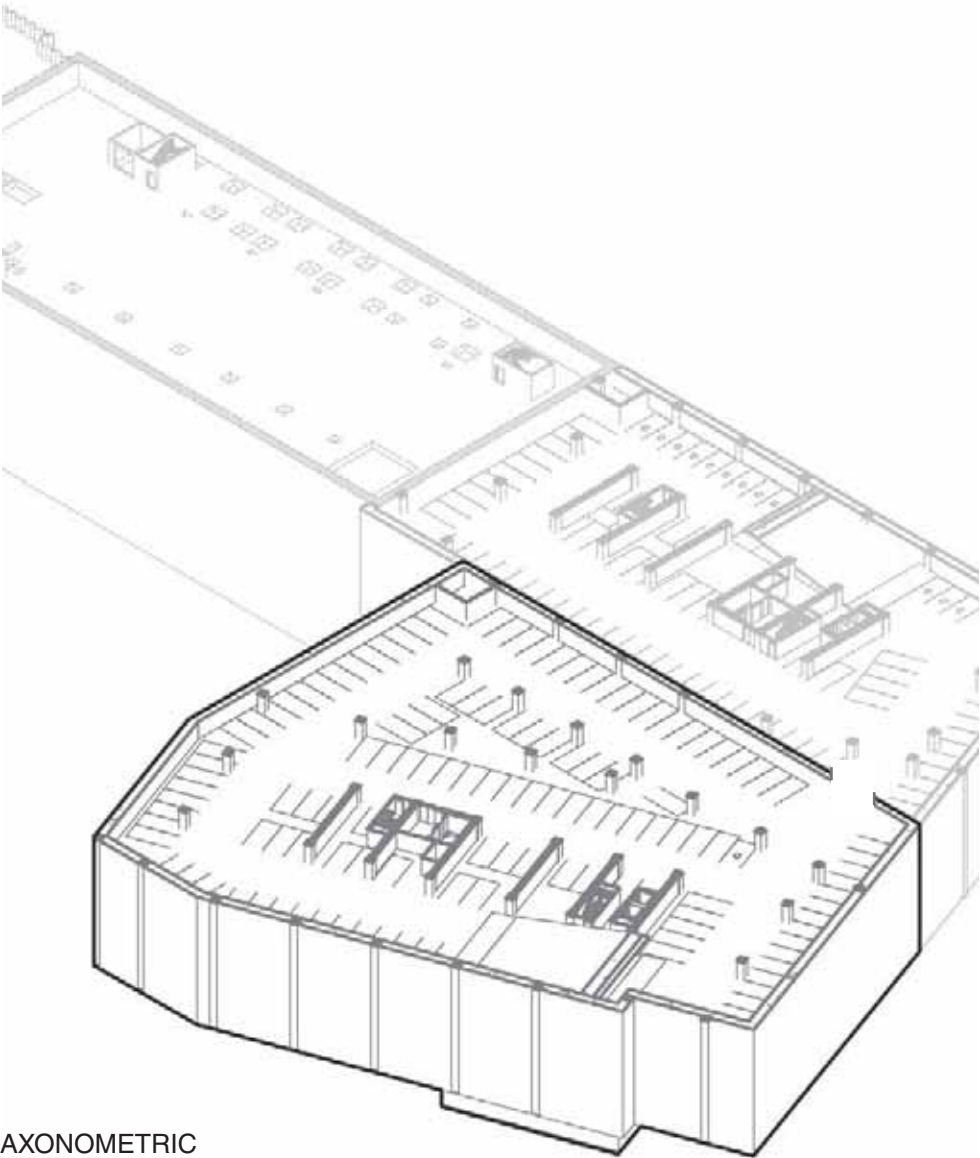
Elevator Car
- Active Use / Bike Valet

Mechanical/Storage

Potential Tenant Terrace



250 BINNEY STREET

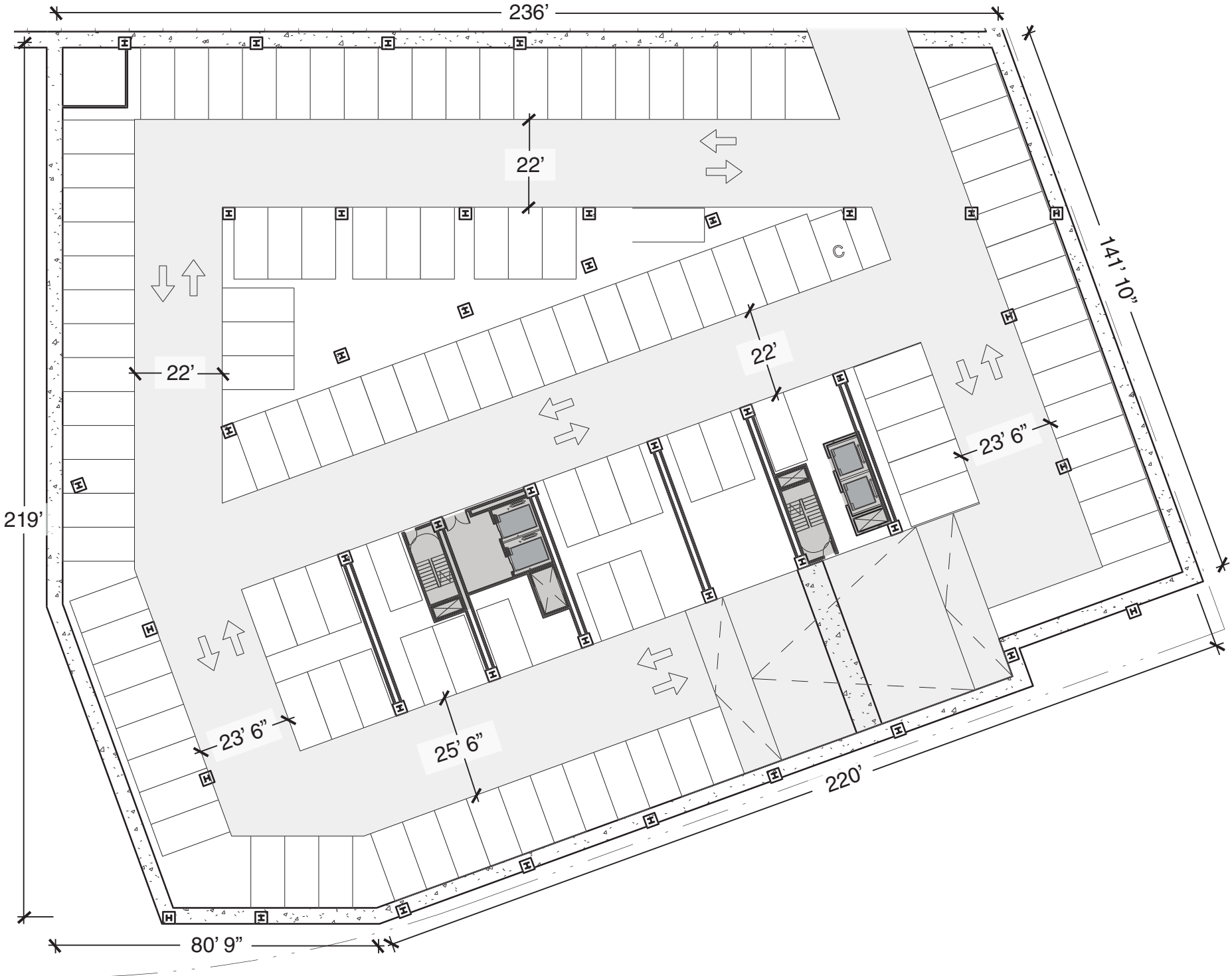


AXONOMETRIC

VEHICLE PARKING NARRATIVE: PHASED DELIVERY OF THE PARKING GARAGES BENEATH 290 AND 250 BINNEY STREET WILL TAKE PLACE ACCORDING TO THE PHASED DELIVERY SCHEDULES OF THE ASSOCIATED BUILDINGS. IT IS ANTICIPATED THAT THE GARAGES WILL SERVE NEW COMMERCIAL TENANTS BASED AT 290 AND 250 BINNEY STREET, RESIDENTS AT 135 BROADWAY, AND COMMERCIAL TENANTS FROM THE EXISTING BLUE GARAGE.

1.3.8 BUILDING PLANS

BELOW GRADE LEVEL B4



123 REGULAR + 1 COMPACT PARKING SPOTS
*NOTE: Up to a total of 1,540 parking spaces may be provided across all levels in both garages.

- Lab / Office

Lobby

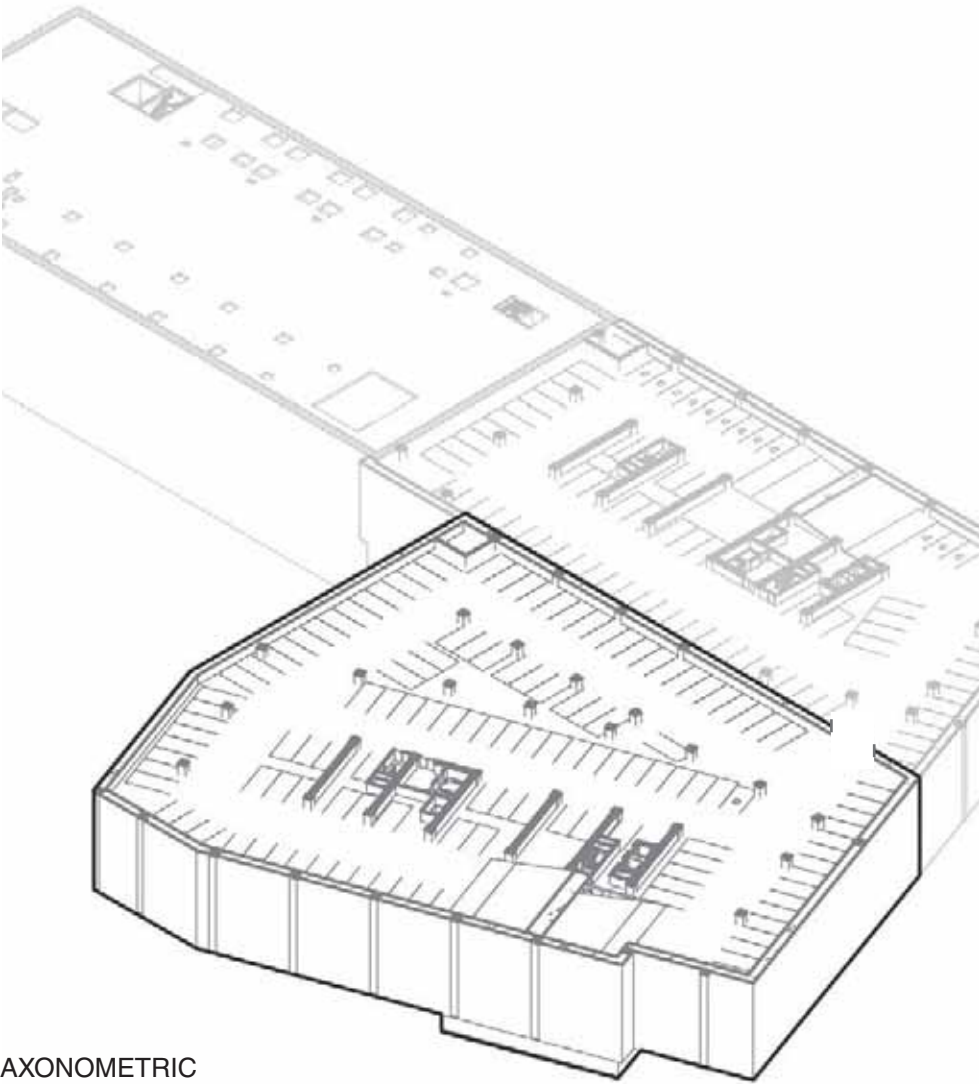
Elevator Car
- Active Use / Bike Valet

Mechanical/Storage

Potential Tenant Terrace



250 BINNEY STREET

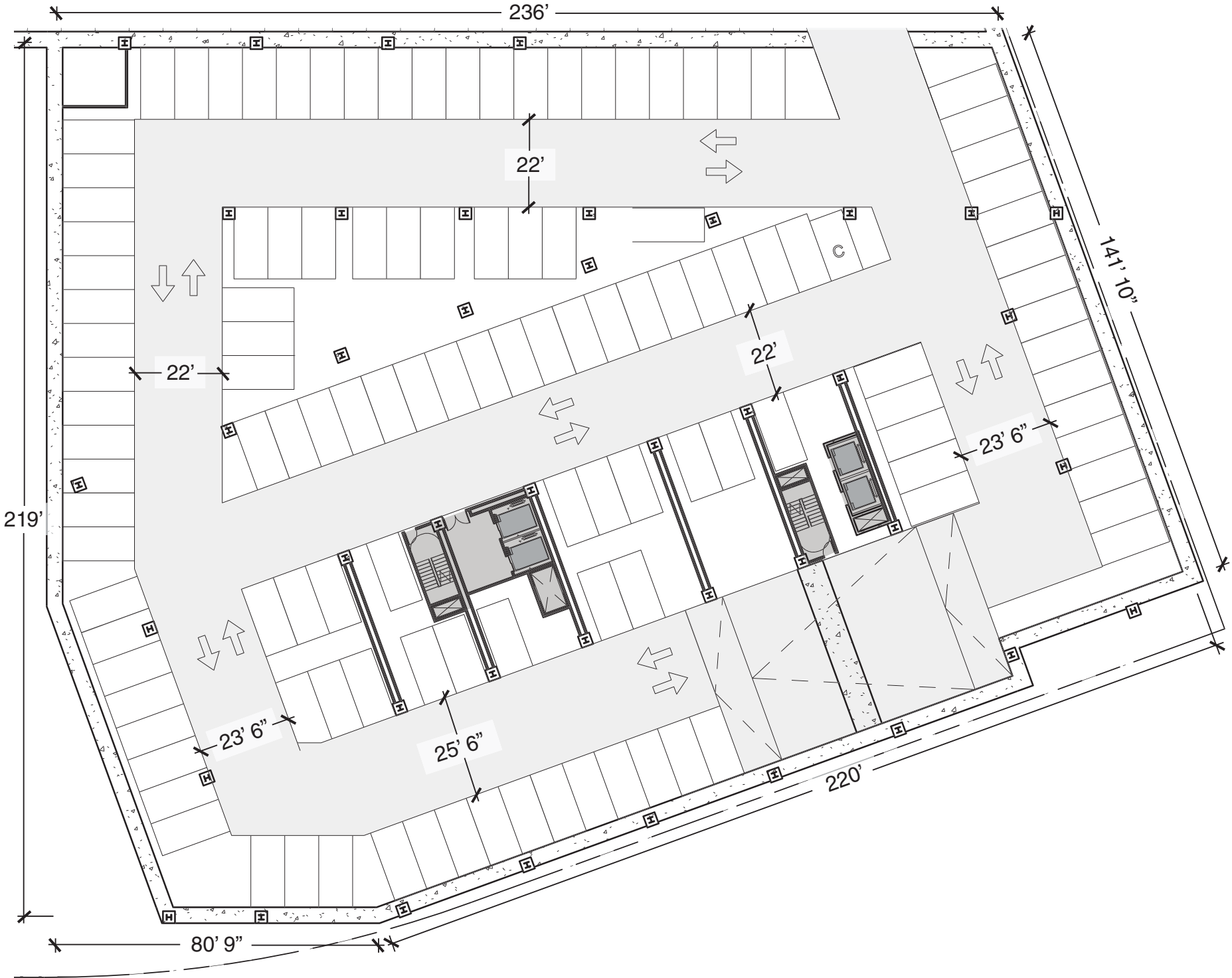


AXONOMETRIC

VEHICLE PARKING NARRATIVE: PHASED DELIVERY OF THE PARKING GARAGES BENEATH 290 AND 250 BINNEY STREET WILL TAKE PLACE ACCORDING TO THE PHASED DELIVERY SCHEDULES OF THE ASSOCIATED BUILDINGS. IT IS ANTICIPATED THAT THE GARAGES WILL SERVE NEW COMMERCIAL TENANTS BASED AT 290 AND 250 BINNEY STREET, RESIDENTS AT 135 BROADWAY, AND COMMERCIAL TENANTS FROM THE EXISTING BLUE GARAGE.

1.3.8 BUILDING PLANS

BELOW GRADE LEVEL B5



123 REGULAR + 1 COMPACT PARKING SPOTS
*NOTE: Up to a total of 1,540 parking spaces may be provided across all levels in both garages.

- Lab / Office

Lobby

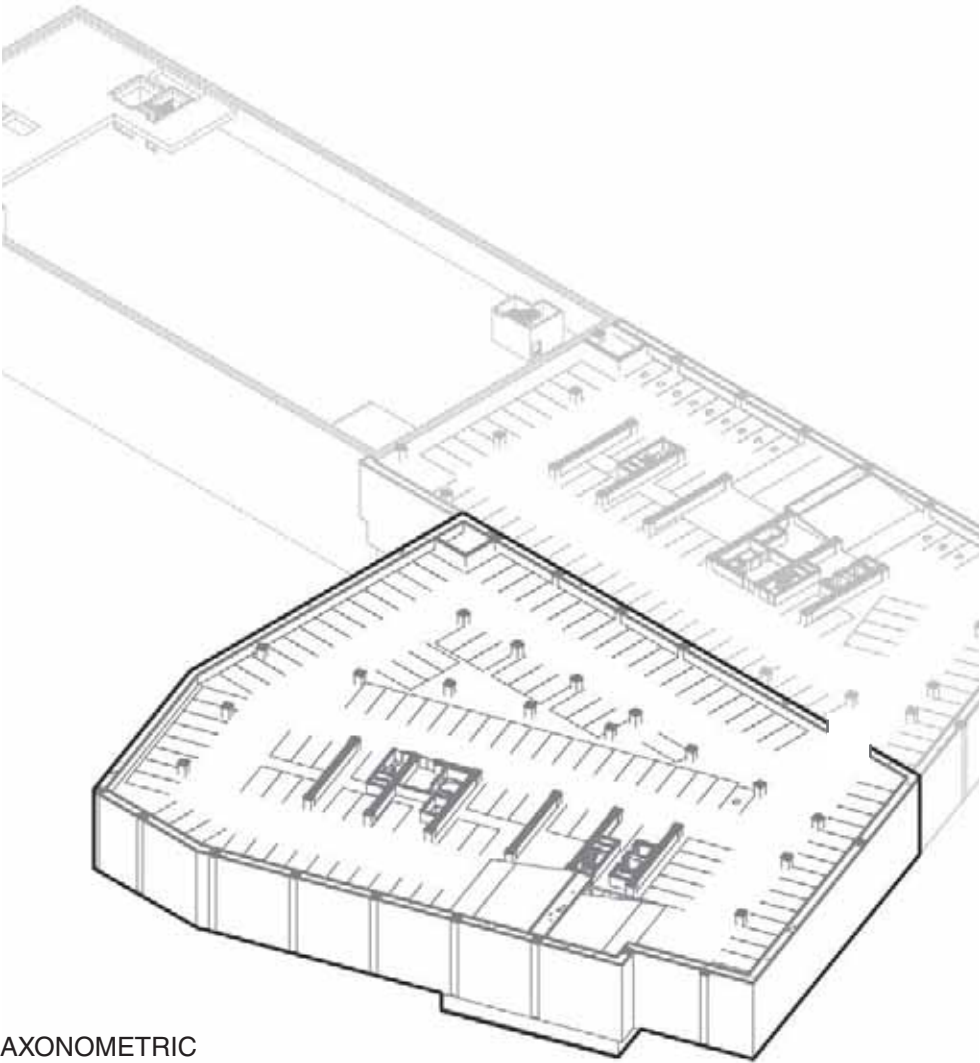
Elevator Car
- Active Use / Bike Valet

Mechanical/Storage

Potential Tenant Terrace



250 BINNEY STREET

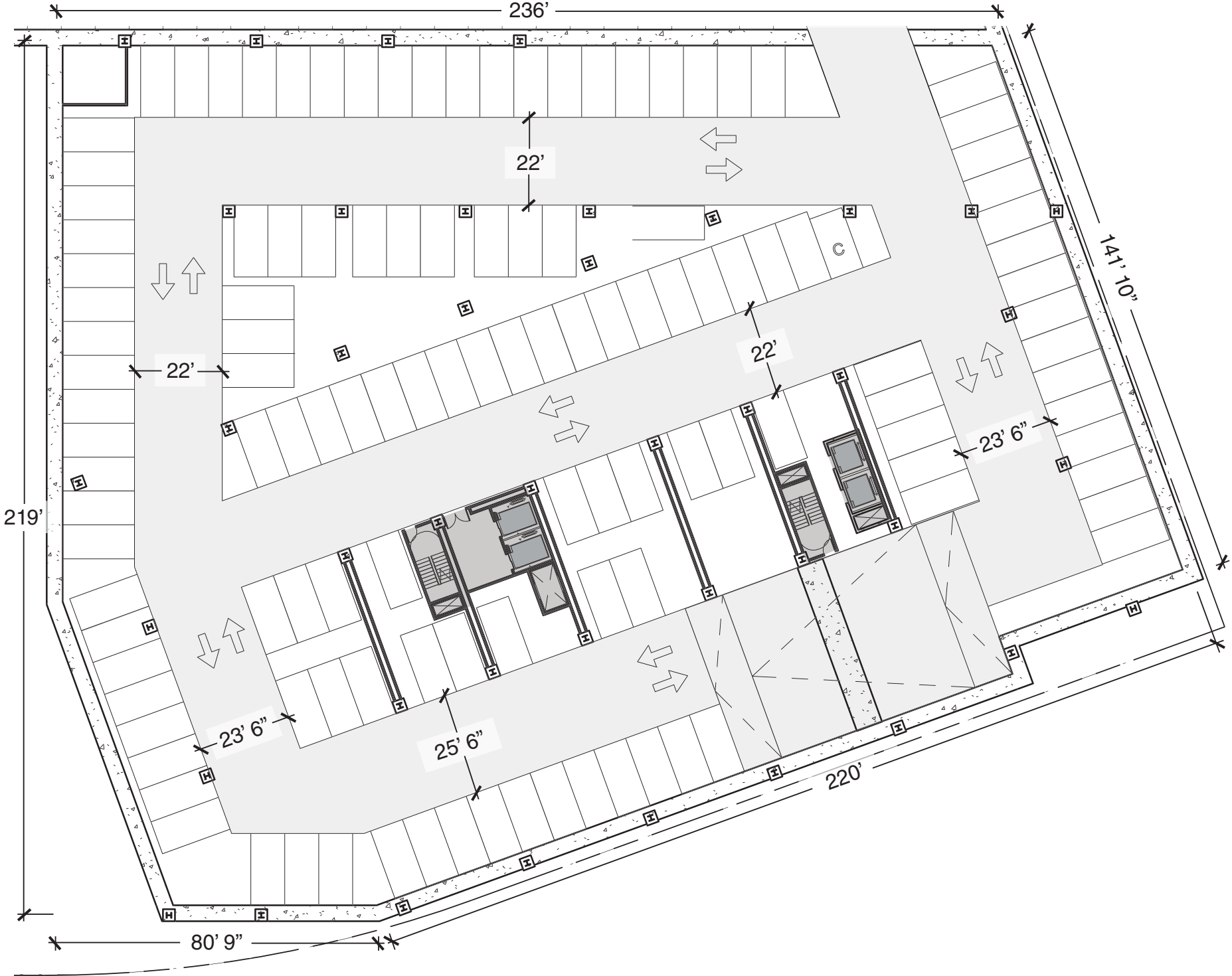


AXONOMETRIC

VEHICLE PARKING NARRATIVE: PHASED DELIVERY OF THE PARKING GARAGES BENEATH 290 AND 250 BINNEY STREET WILL TAKE PLACE ACCORDING TO THE PHASED DELIVERY SCHEDULES OF THE ASSOCIATED BUILDINGS. IT IS ANTICIPATED THAT THE GARAGES WILL SERVE NEW COMMERCIAL TENANTS BASED AT 290 AND 250 BINNEY STREET, RESIDENTS AT 135 BROADWAY, AND COMMERCIAL TENANTS FROM THE EXISTING BLUE GARAGE.

1.3.8 BUILDING PLANS

BELOW GRADE LEVEL B6



123 REGULAR + 1 COMPACT PARKING SPOTS
*NOTE: Up to a total of 1,540 parking spaces may be provided across all levels in both garages.

- Lab / Office

Lobby

Elevator Car
- Active Use / Bike Valet

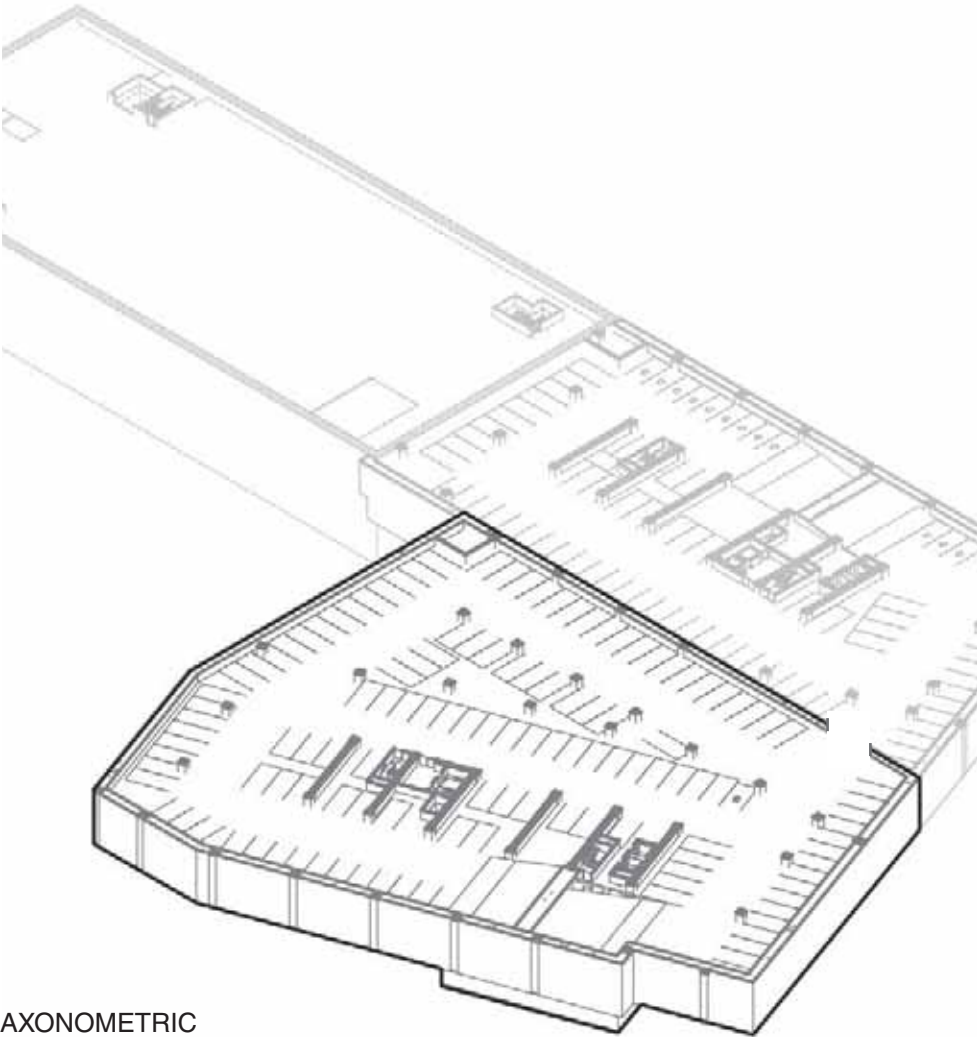
Mechanical/Storage

Potential Tenant Terrace



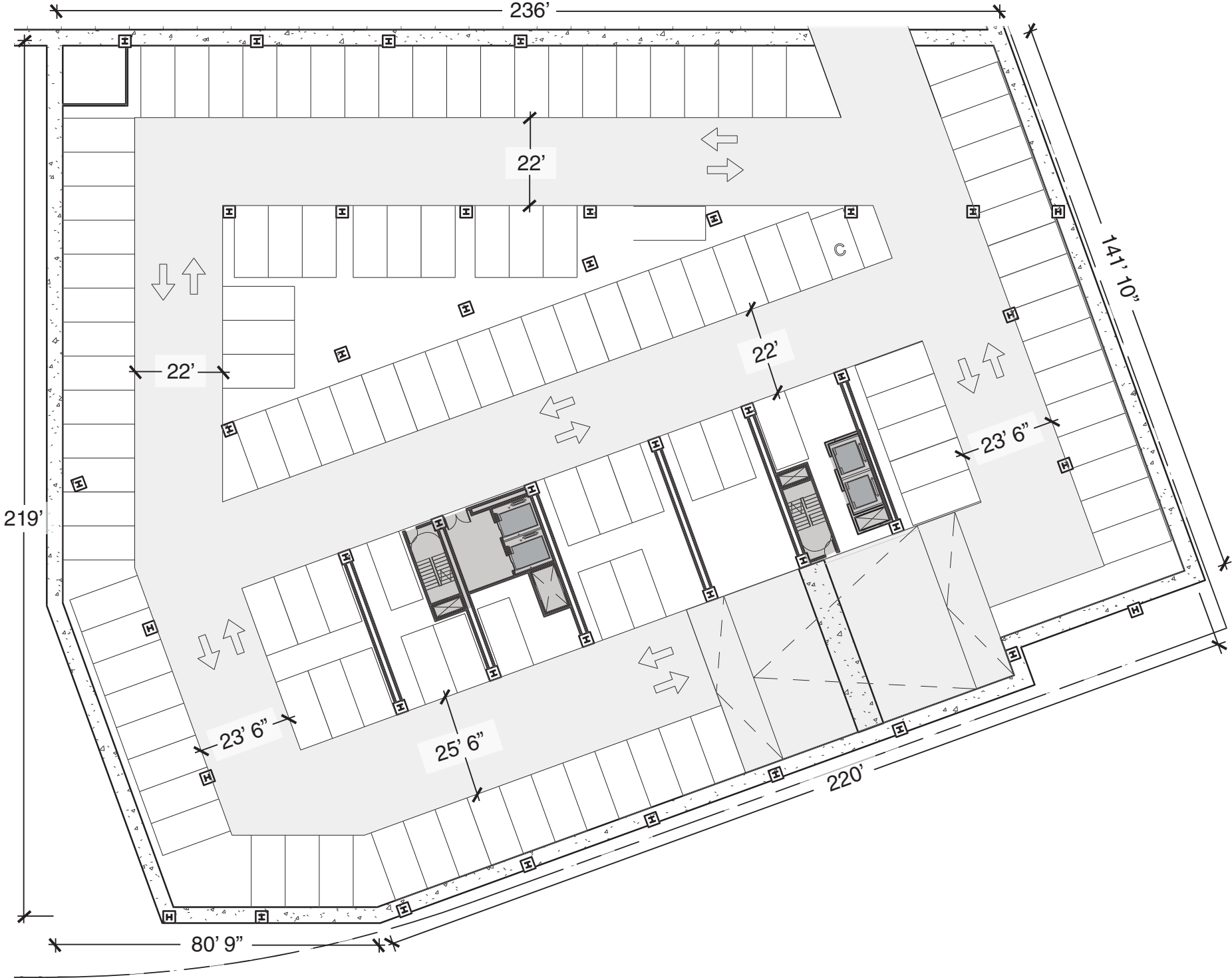
AXONOMETRIC

VEHICLE PARKING NARRATIVE: PHASED DELIVERY OF THE PARKING GARAGES BENEATH 290 AND 250 BINNEY STREET WILL TAKE PLACE ACCORDING TO THE PHASED DELIVERY SCHEDULES OF THE ASSOCIATED BUILDINGS. IT IS ANTICIPATED THAT THE GARAGES WILL SERVE NEW COMMERCIAL TENANTS BASED AT 290 AND 250 BINNEY STREET, RESIDENTS AT 135 BROADWAY, AND COMMERCIAL TENANTS FROM THE EXISTING BLUE GARAGE.



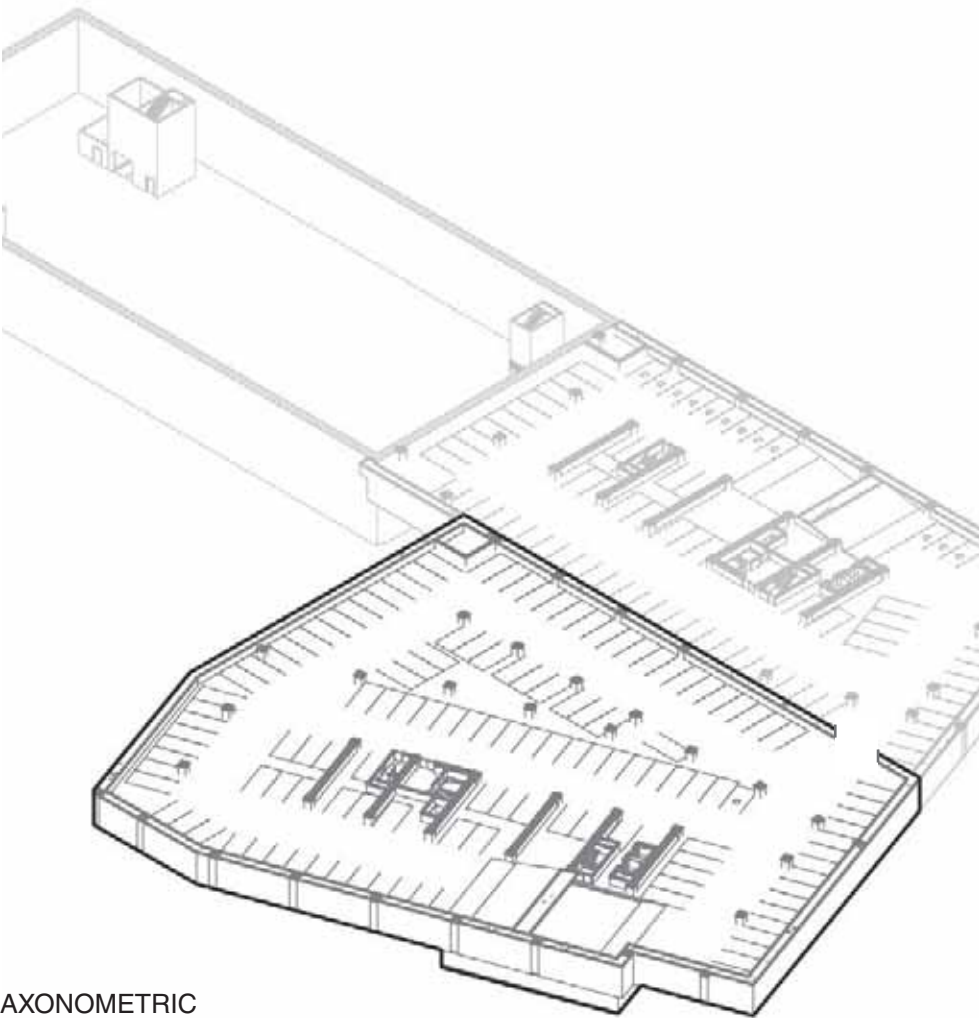
1.3.8 BUILDING PLANS

BELOW GRADE LEVEL B7



123 REGULAR + 1 COMPACT PARKING SPOTS
*NOTE: Up to a total of 1,540 parking spaces may be provided across all levels in both garages.

- | | |
|--------------|--------------------------|
| Lab / Office | Active Use / Bike Valet |
| Lobby | Mechanical/Storage |
| Elevator Car | Potential Tenant Terrace |

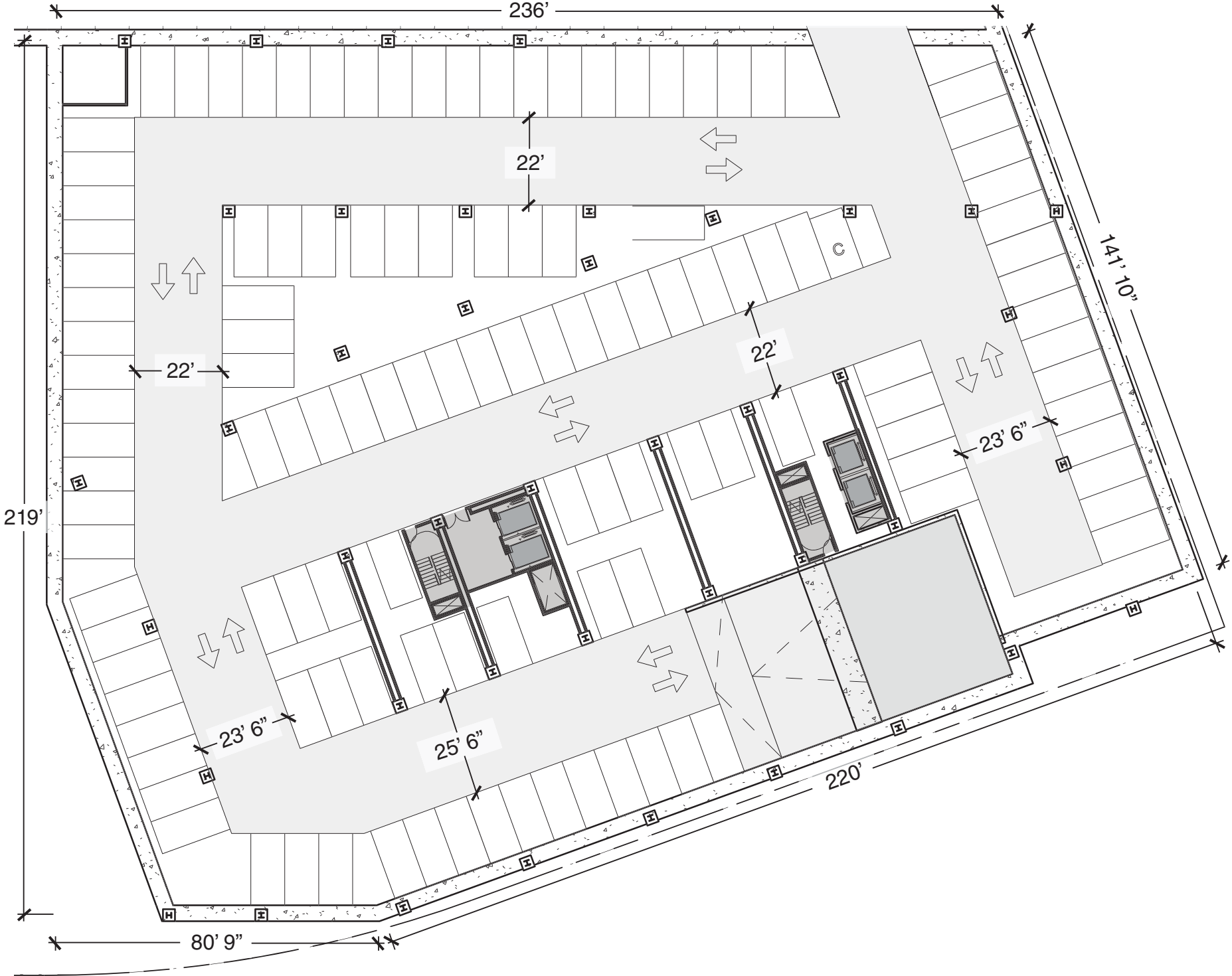


AXONOMETRIC

VEHICLE PARKING NARRATIVE: PHASED DELIVERY OF THE PARKING GARAGES BENEATH 290 AND 250 BINNEY STREET WILL TAKE PLACE ACCORDING TO THE PHASED DELIVERY SCHEDULES OF THE ASSOCIATED BUILDINGS. IT IS ANTICIPATED THAT THE GARAGES WILL SERVE NEW COMMERCIAL TENANTS BASED AT 290 AND 250 BINNEY STREET, RESIDENTS AT 135 BROADWAY, AND COMMERCIAL TENANTS FROM THE EXISTING BLUE GARAGE.

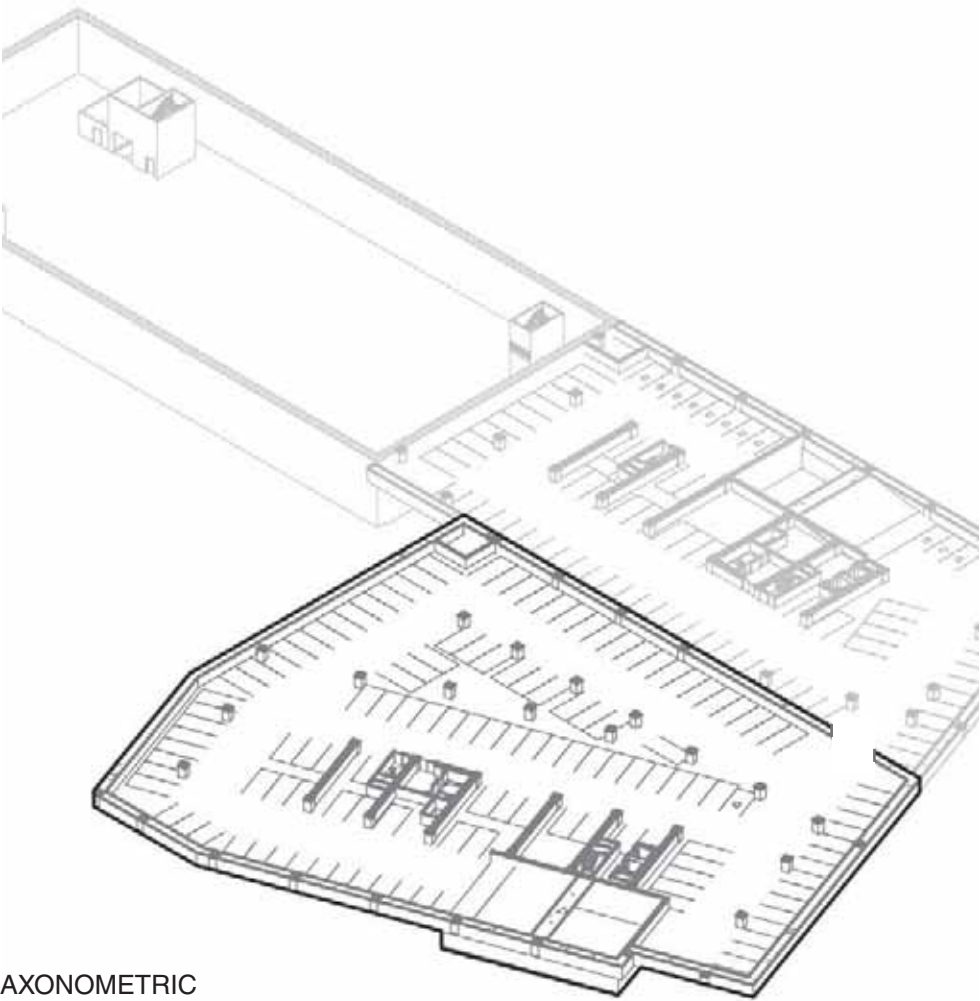
1.3.8 BUILDING PLANS

BELOW GRADE LEVEL B8



123 REGULAR + 1 COMPACT PARKING SPOTS
*NOTE: Up to a total of 1,540 parking spaces may be provided across all levels in both garages.

- | | |
|--------------|--------------------------|
| Lab / Office | Active Use / Bike Valet |
| Lobby | Mechanical/Storage |
| Elevator Car | Potential Tenant Terrace |



AXONOMETRIC

VEHICLE PARKING NARRATIVE: PHASED DELIVERY OF THE PARKING GARAGES BENEATH 290 AND 250 BINNEY STREET WILL TAKE PLACE ACCORDING TO THE PHASED DELIVERY SCHEDULES OF THE ASSOCIATED BUILDINGS. IT IS ANTICIPATED THAT THE GARAGES WILL SERVE NEW COMMERCIAL TENANTS BASED AT 290 AND 250 BINNEY STREET, RESIDENTS AT 135 BROADWAY, AND COMMERCIAL TENANTS FROM THE EXISTING BLUE GARAGE.