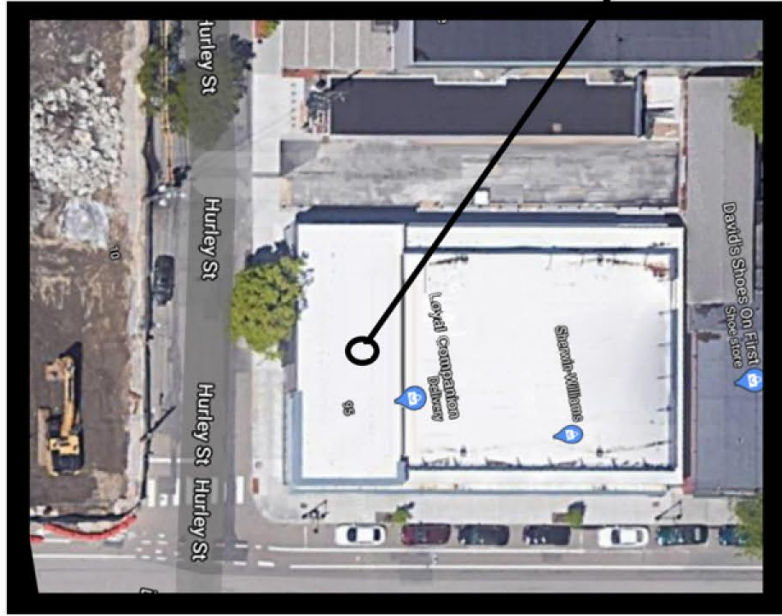
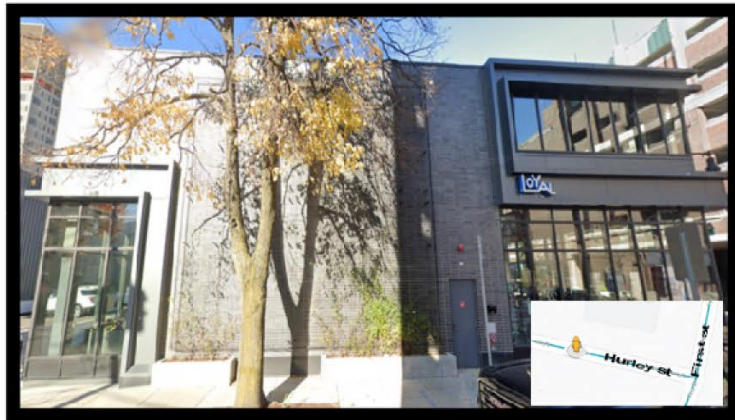


**95 FIRST STREET**  
**ARIAL PHOTO**



**View 1**



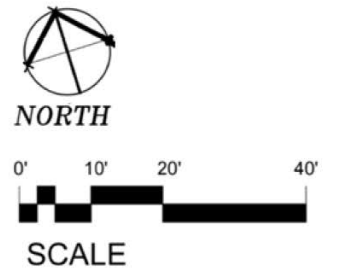
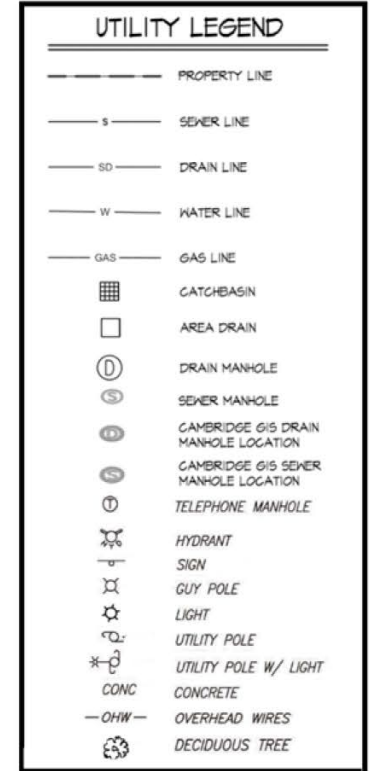
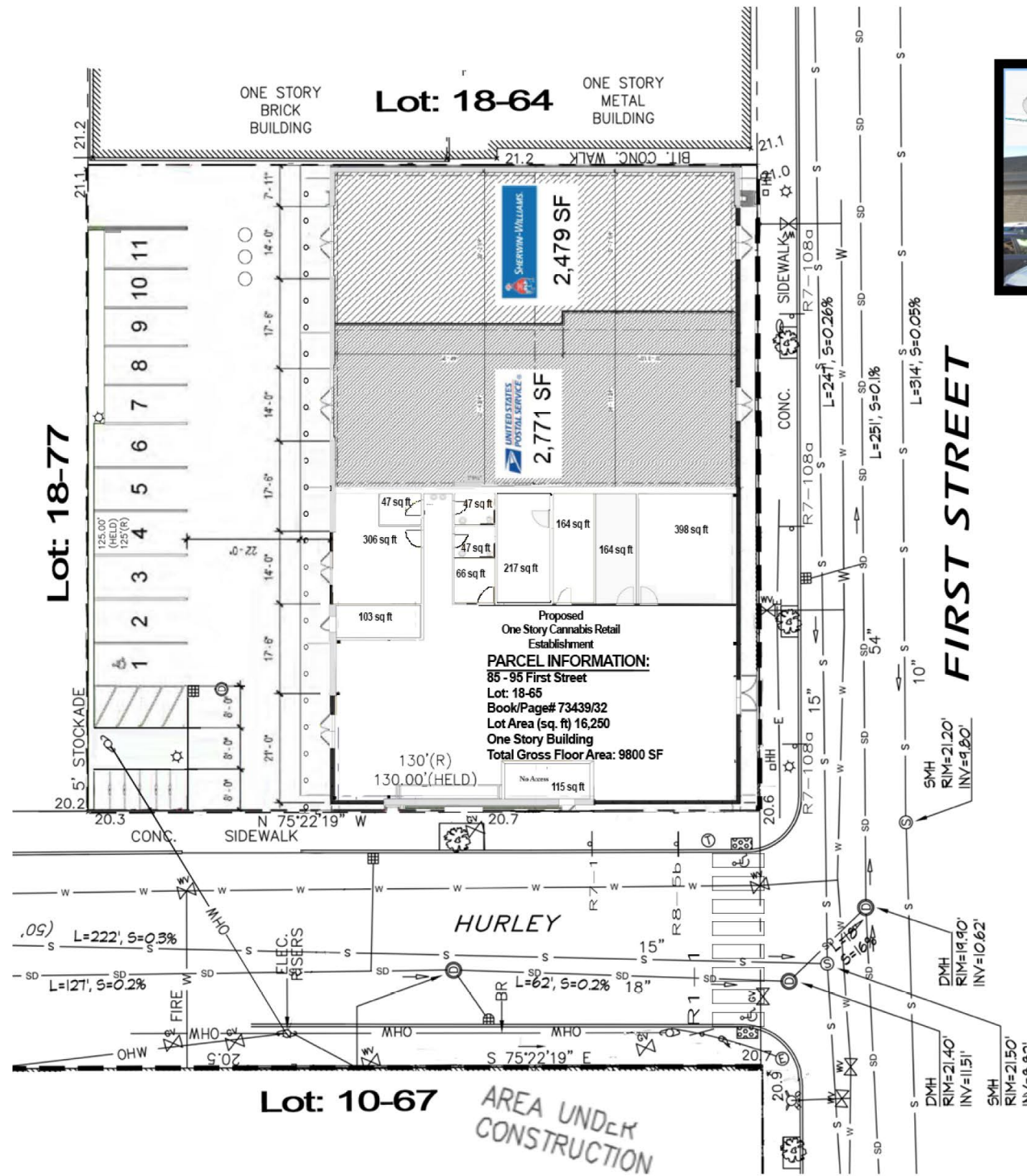
**View 2**



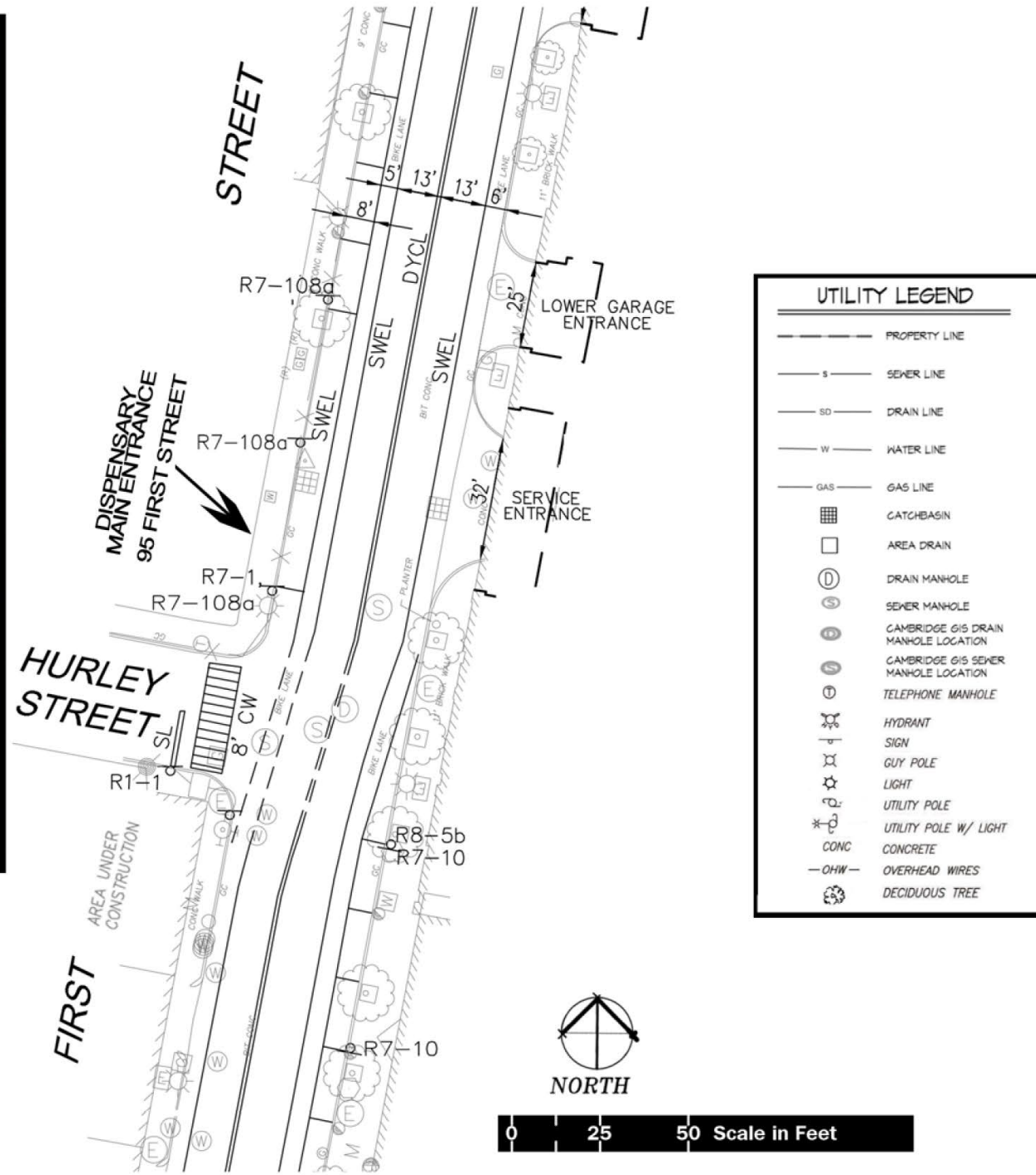
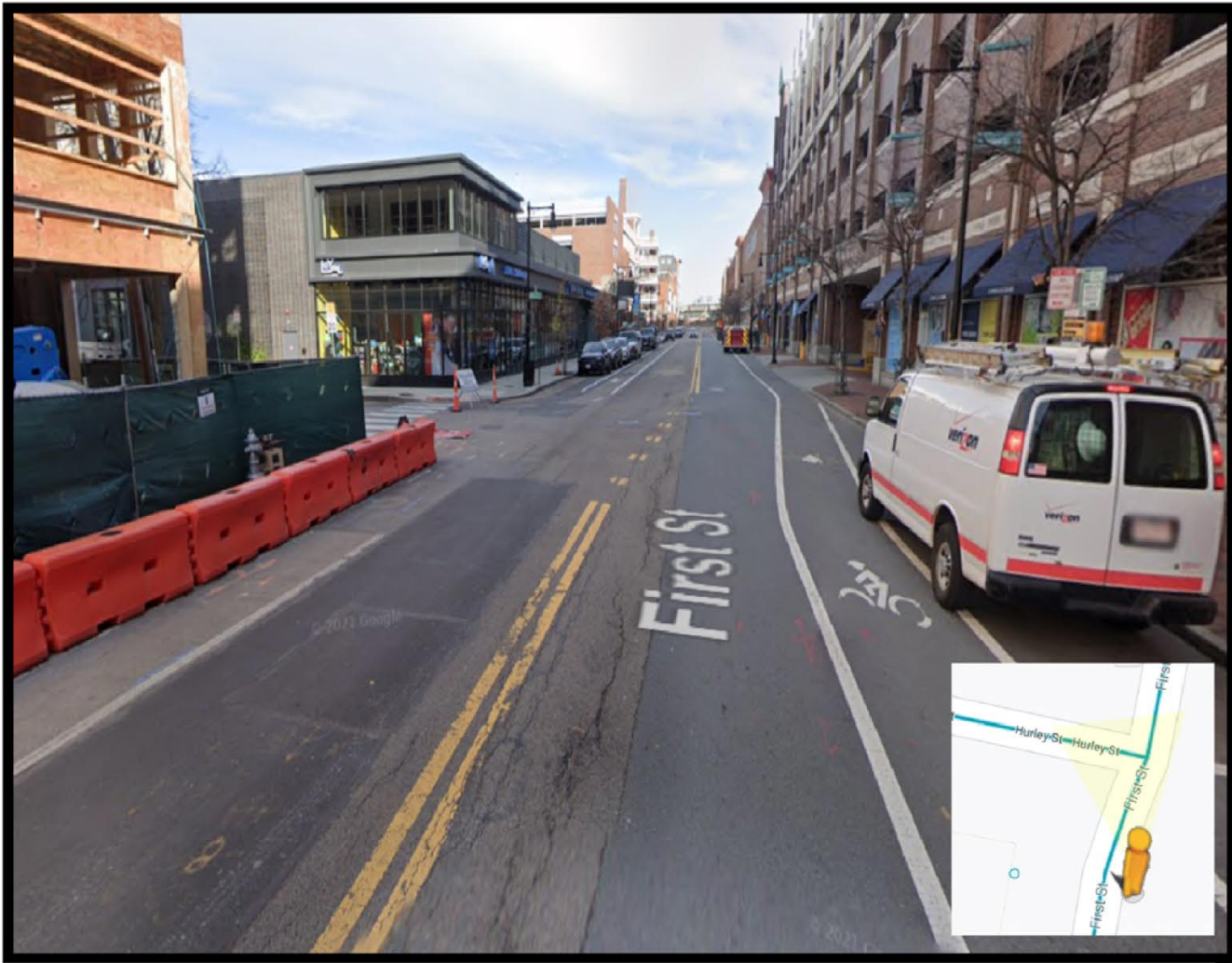
**View 3**



**View 4**







SIGN LEGEND (ARROW DIRECTION ON SIGNAGE VARIES BASED ON LOCATION)											
R1-1		R7-1		R7-6		R8-5b		R7-108a		R7-10	

MARKING LEGEND	
SWEL	SOLID WHITE EDGE LINE
SL	STOP LINE
CW	CROSSWALK



**Refuse Shielding**

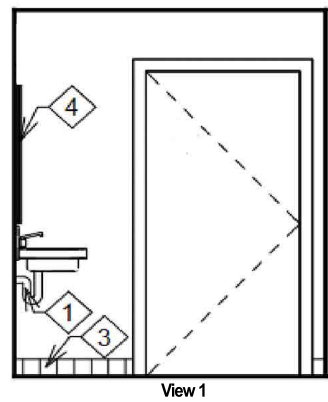


**FIGURE 1**

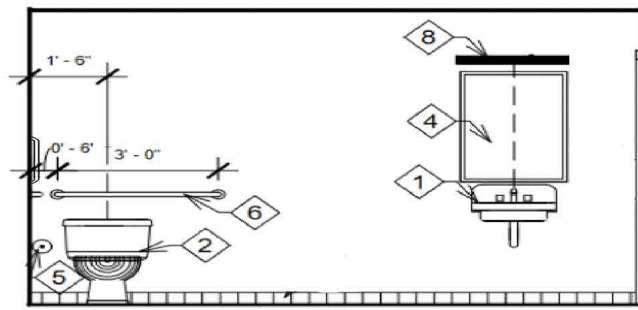
\*Legend item 17

**Accessible Bathrooms**

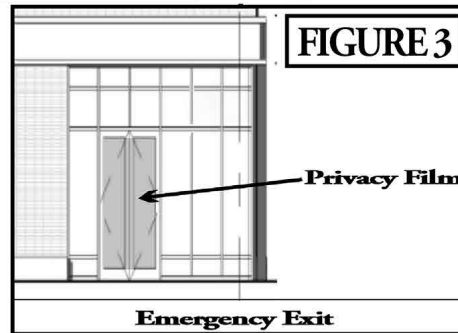
**FIGURE 2**



View 1



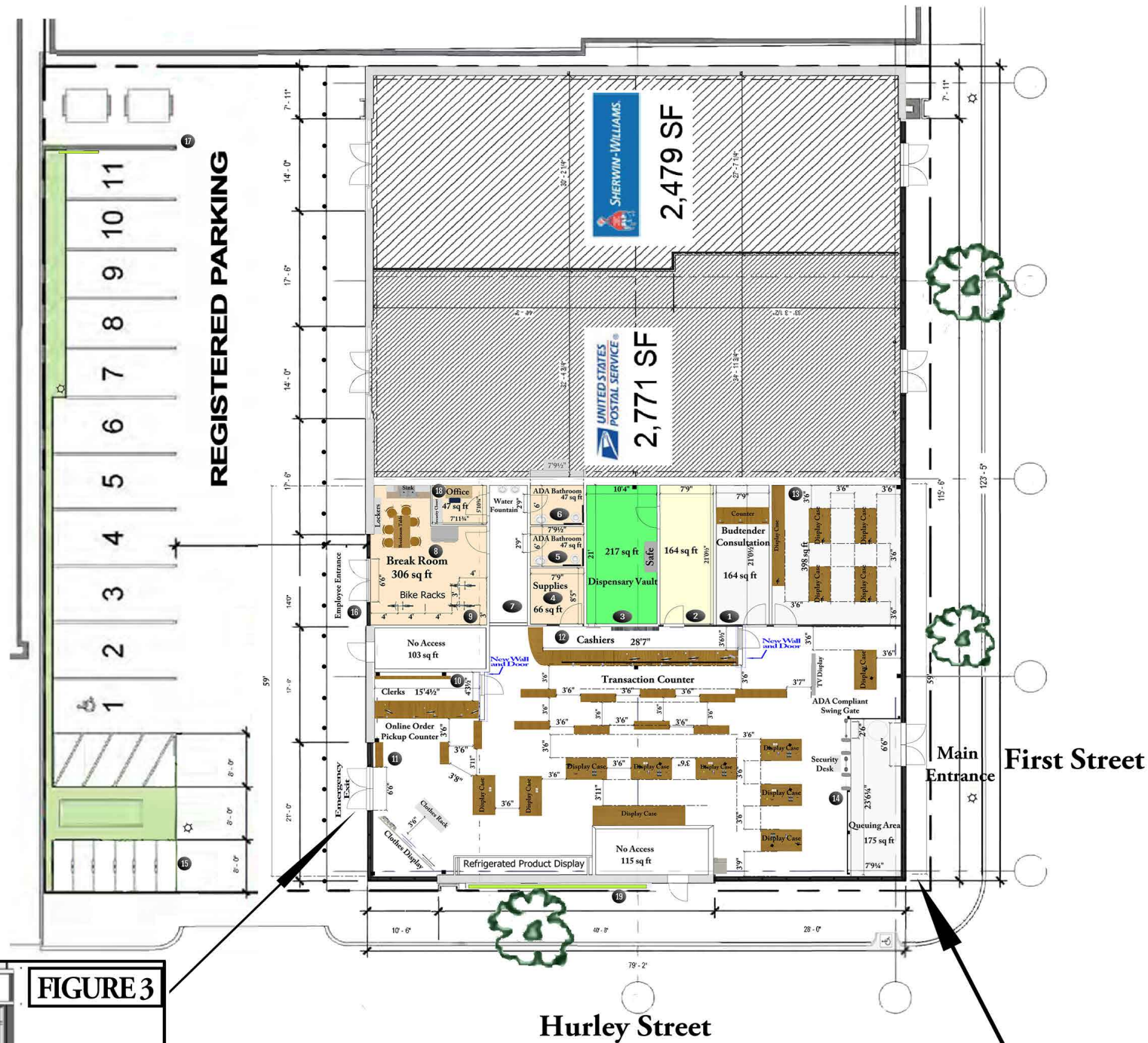
View 2



**FIGURE 3**

Privacy Film

Emergency Exit

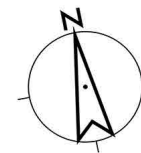


**NOTES:**  
 AREAS AND ROOMS NUMBERED 1-7  
 HAVE CEILING HEIGHTS OF 9 FT. ALL  
 OTHER AREAS HAVE FULL CEILING  
 HEIGHT.

**EGRESS CAPACITY PROVIDED**  
 39 INCH HORIZONTAL EXITS

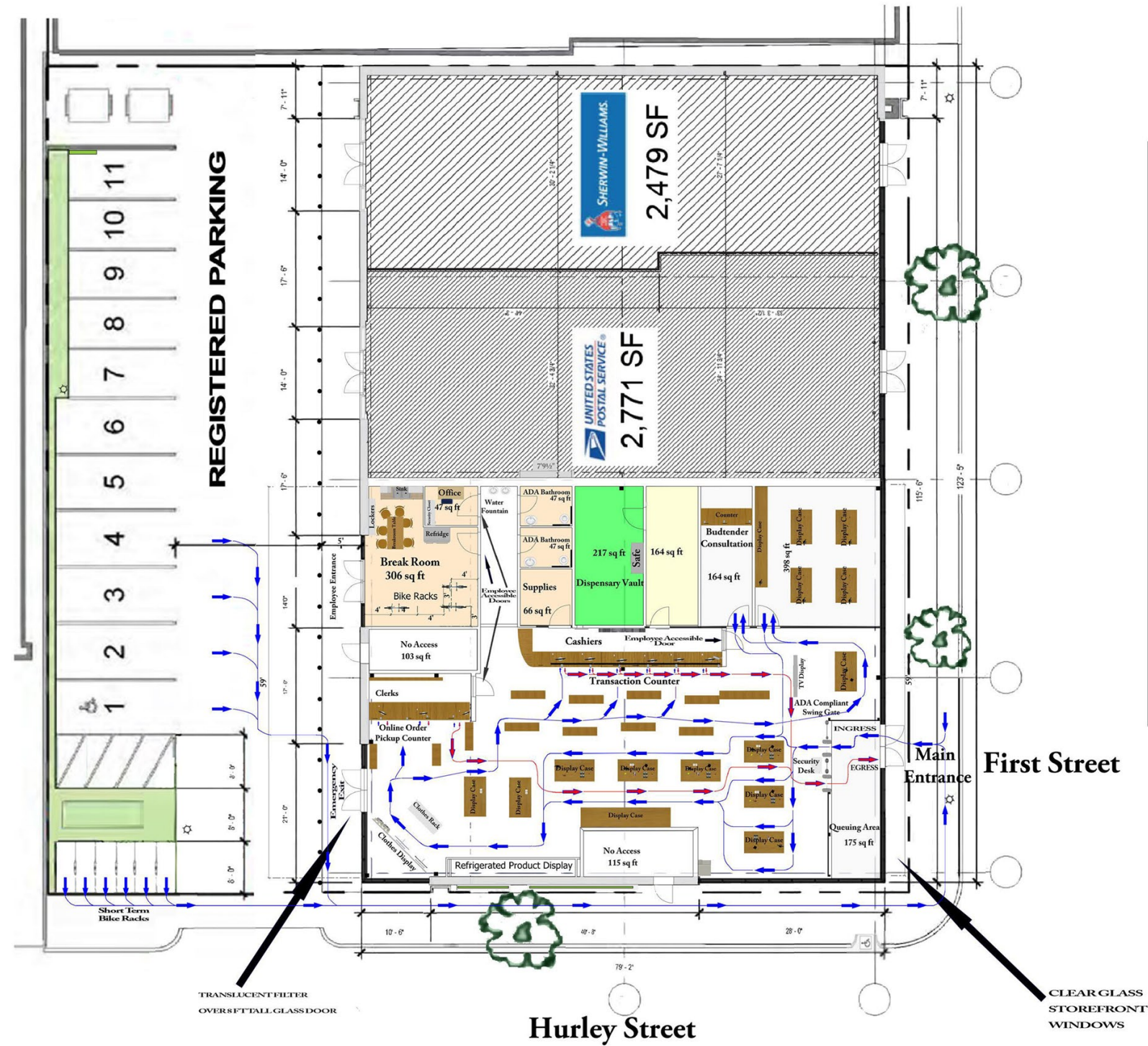
**Legend**

1. Consultation / Budtenders
2. Cashier Anne
3. Vault
4. Office Supplies
5. Bathroom
6. Bathroom
7. Corridor
8. Breakroom
9. Bike Rack
10. Online Pickup Area
11. Emergency Exit
12. POS Stations
13. Art Wall
14. Security Desk
15. Short Term Bike Rack
16. Employee Entrance
17. Refuse Dumpster
18. Office
19. Pre-existing Green Wall



0 20 FT  
 SCALE





**NOTES:**

15 EMPLOYEES AND 56 CUSTOMERS IS THE PROJECTED COMPOSITION OF THE INTERIOR OCCUPANCY. THE EXTERIOR REAR WALKWAY DOES NOT HAVE AN EGRESS THAT PASSES THROUGH THE BUILDING.

THE TWO TURNSTILES WILL BE BI-DIRECTIONAL. THE CLEAR WIDTH SHALL NOT BE LESS THEN 16 1/2 INCHES AND BELOW A HEIGHT OF 39 INCHES AND NOT LESS THAN 22 INCHES.

MAIN ENTRANCE QUEUING CAPACITY IS 3 CUSTOMERS.

**USE/OCCUPANCY**

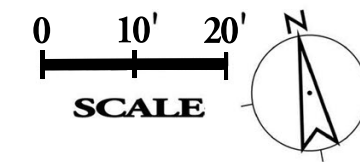
TOTAL GROSS FLOOR AREA: 4575 SQUARE FEET

AREA	GROSS SF	SF/OF	REQUIRED OCCUPANT LOAD
BUSINESS	604 SF	150	71
MERCANTILE	3,971 SF	60	467

**LEGEND**

← PRE-PURCHASE CIRCULATION / INGRESSING

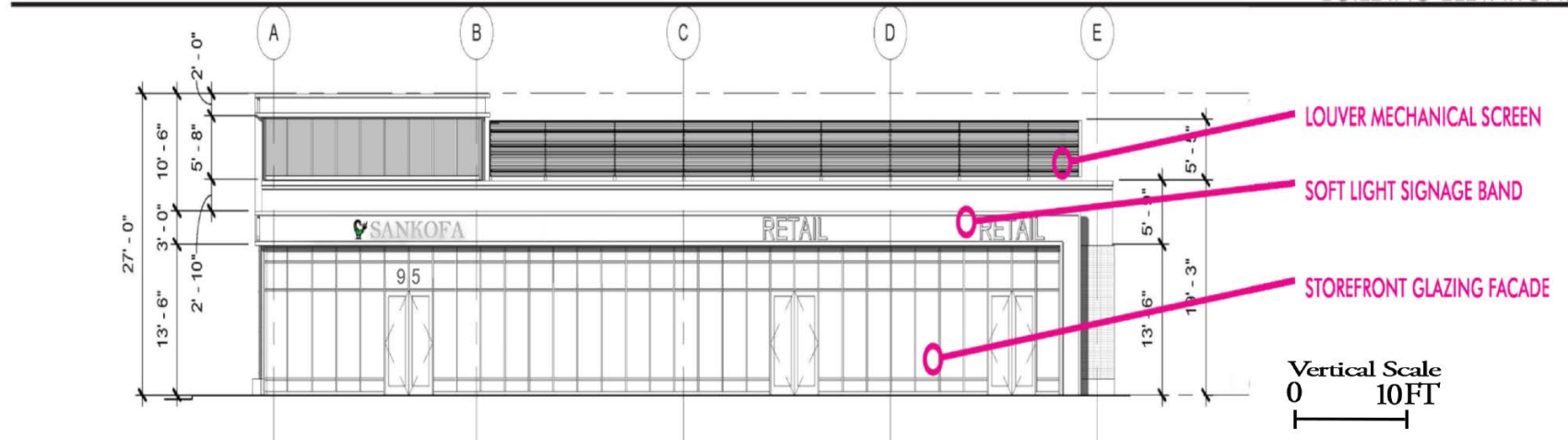
← POST-PURCHASE CIRCULATION / EGRESSING



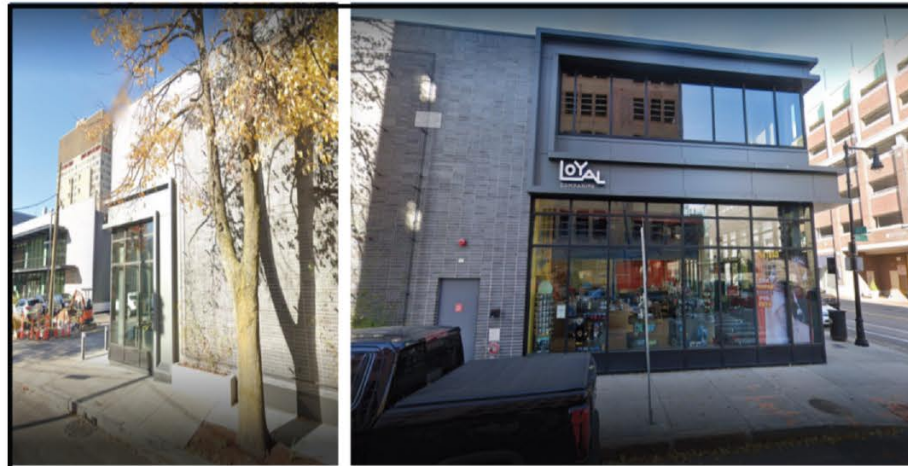




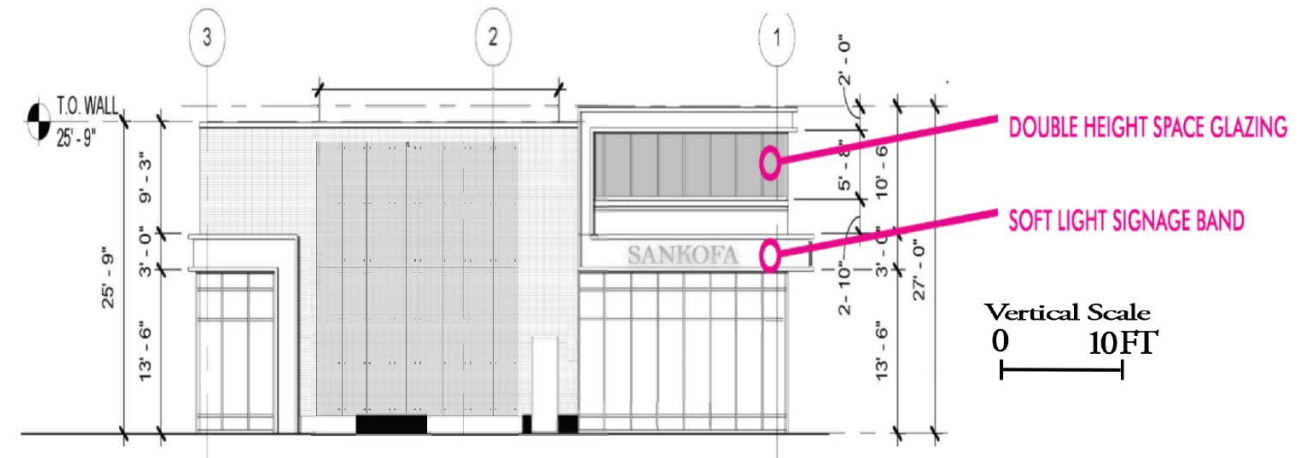
EXISTING FIRST STREET (PHOTO)



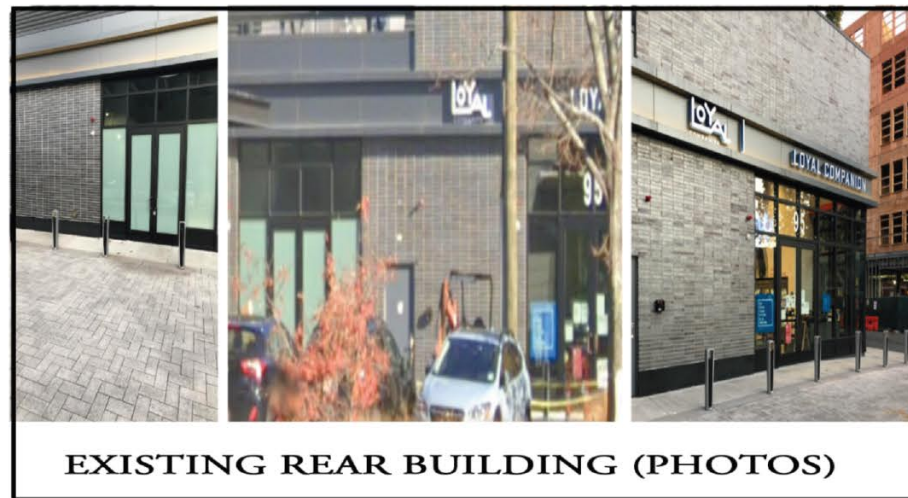
PROPOSED FIRST STREET ELEVATION



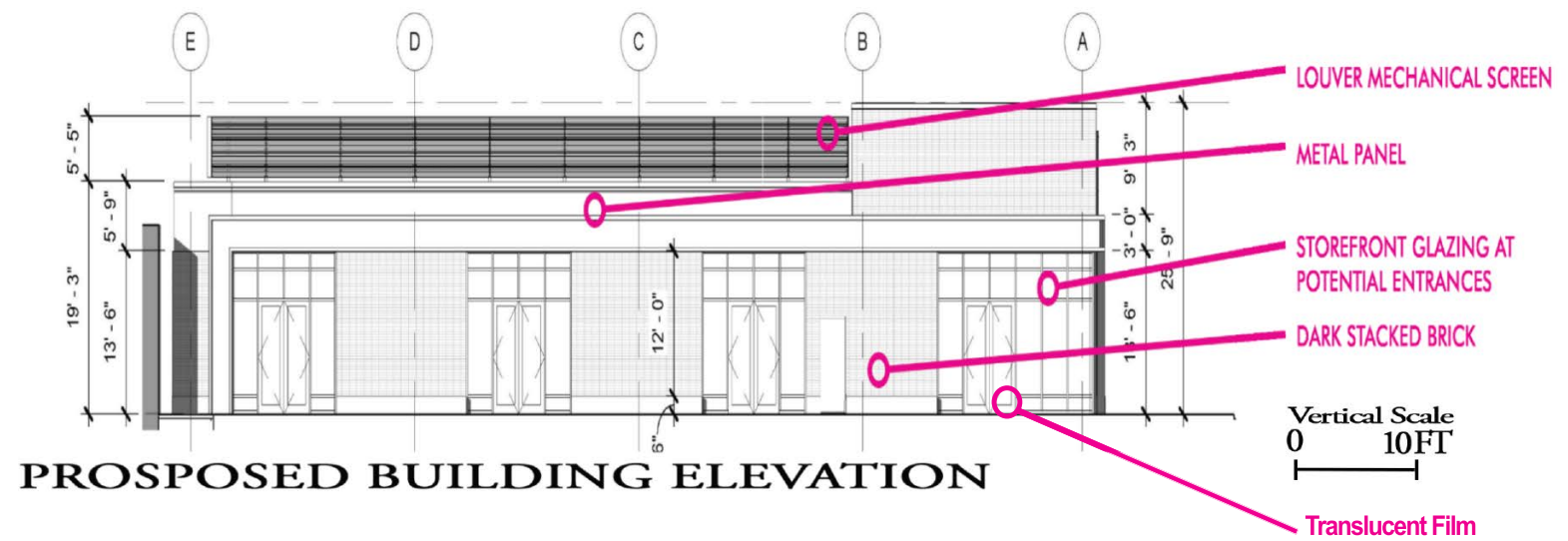
EXISTING HURLEY STREET (PHOTOS)



PROPOSED HURLEY STREET ELEVATION



EXISTING REAR BUILDING (PHOTOS)



PROPOSED BUILDING ELEVATION







**View 1 (First Street)**



**View 2 (First and Hurley Street)**



**View 3 (Hurley Street)**



**View 4 (Nighttime)**

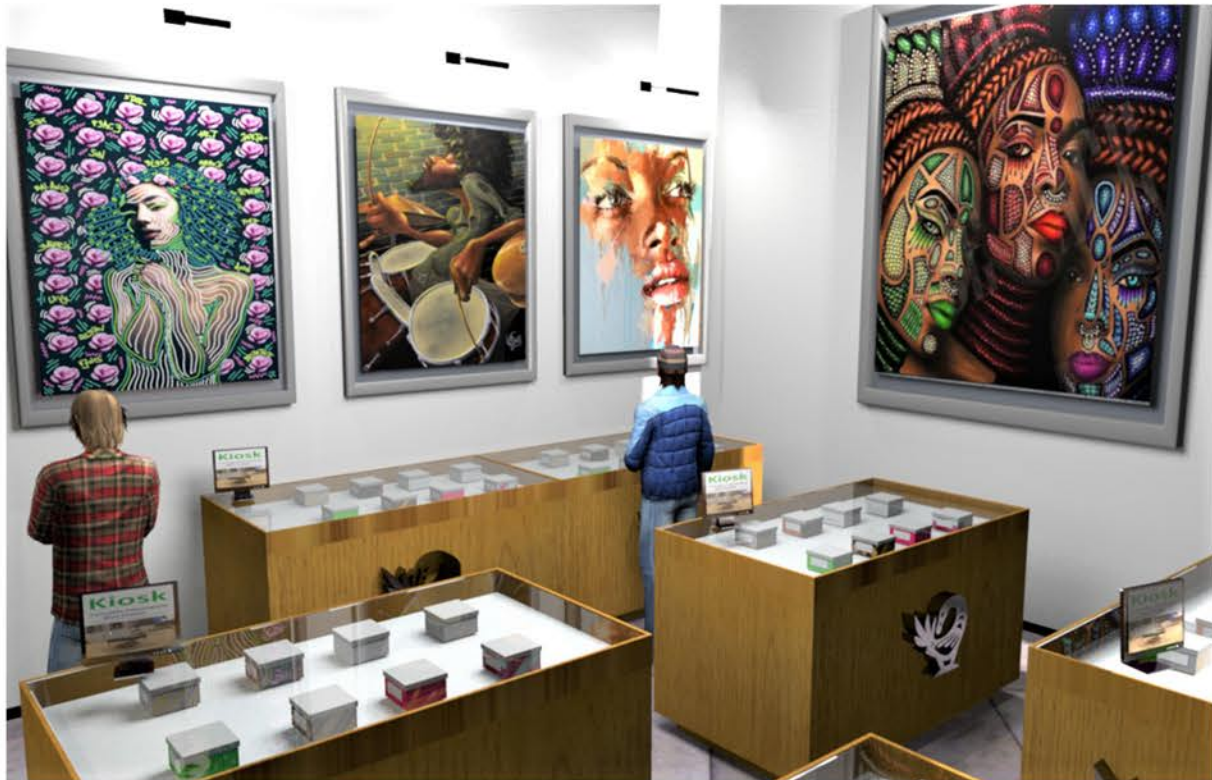




**View 1**



**View 2**

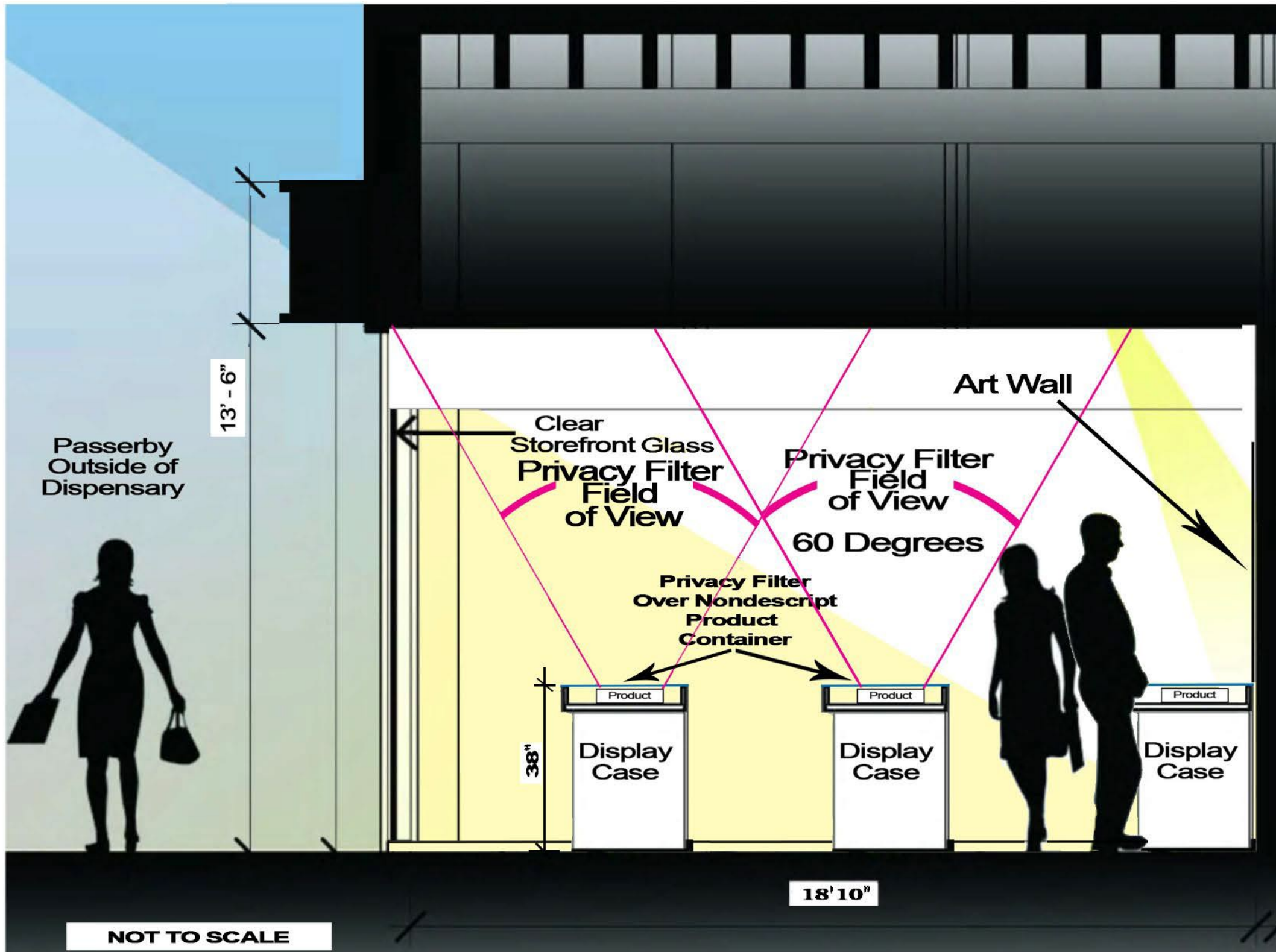


**View 3**



**View 4**





**3M Science. Applied to Life.™**

**3M™ Black privacy filters. Stop Visual Hacking.**

**Protect all your data from unfriendly eyes!**

Do you know that there is 80% risk someone throws an eye on your computer screen when you Work in public or open spaces?

Invented in 1990, 3M™ Privacy Filters are using the technology of "micro-louvers" to darken the screen. 3M Privacy Filters REMAIN Today's Best protection on the market with a limited viewing angle of 30° EACH side of screen. Result: only the User Facing to the screen can read the displayed data, when what neighbors see is a black screen.

**Highlights for 3M™ Black privacy filters:**

- Good clarity for Better readability of messages and documents, through amplification of transmitted light.
- Scratch-resistant screens: a "must have" while travelling. Thanks to the anti-abrasive protective layer provided by the filter.
- The largest Privacy Filter product range, suitable for all Computer Models, monitors and laptops, Mac as well as PC's. Now also available for tablets and smartphones.

**3M™ Black Privacy Filter for 10.1 in Widescreen Laptop, PF101W98**  
Part Number PF101W98, 3M ID 98044054231, UPC 00051128788402

- Microlouver technology delivers world-class effective "black out" privacy from side views outside the 60-degree viewing angle
- Reversible between a glossy side and glare-reducing matte
- Reduces 35% of blue light transmission from the display
- Helps reduce reflections so you see your screen clearly with pristine image clarity

**Details**

- Microlouver technology delivers world-class effective "black out" privacy from side views outside the 60-degree viewing angle
- Reversible between a glossy side and glare-reducing matte
- Reduces 35% of blue light transmission from the display
- Helps reduce reflections so you see your screen clearly with pristine image clarity
- Matte surface helps reduce glare and hide fingerprints
- Designed with advanced microlouver technology, creating an excellent high-resolution viewing experience
- Designed to seamlessly fit within the raised bezel of your device
- Easy to attach, remove and clean
- Gives screens an added layer of durable protection from dust and scratches
- 100% hand inspected for quality assurance

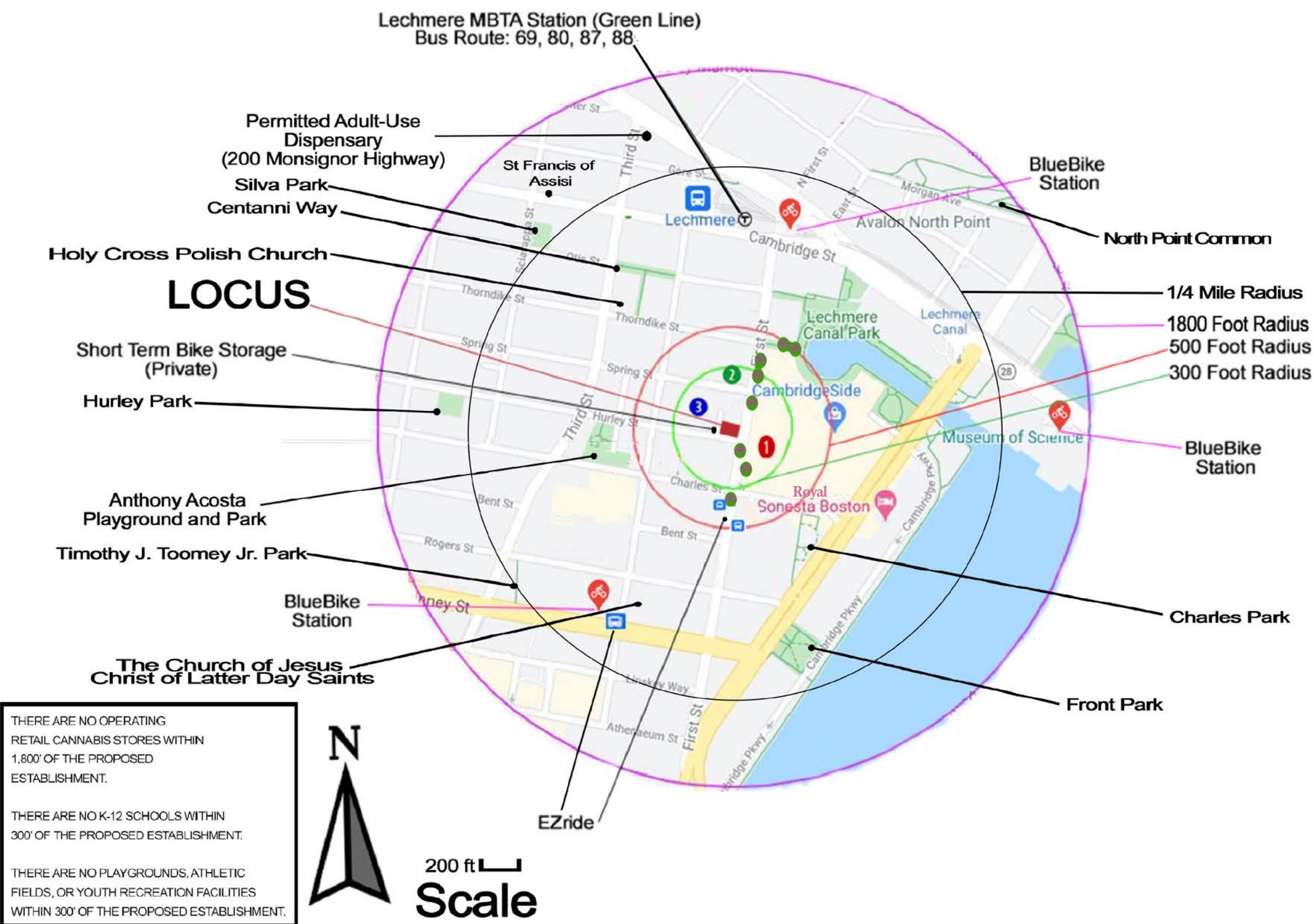
3M™ Black Privacy Filters for laptops provide world-class "black out" privacy from side views, while creating an excellent, high-resolution viewing experience from straight on views. Reversible between a glossy side and a glare-reducing matte side that helps reduce reflections and hide fingerprints, so you can enjoy pristine image clarity.

Display and device technology continues to advance. So do we. Behind the simplicity of our products is a powerful combination of optical science and sheer ingenuity you've come to expect from 3M. The microlouver technology in our world-class privacy filter helps protect the confidential and sensitive information displayed on your screen. The matte surface helps reduce glare and hide fingerprints, so you get crisp image clarity on your laptop, while visual hackers with side views are kept in the dark.

ALL CANNABIS, CANNABIS PRODUCTS, RELATED IMAGES, AND ASSOCIATED PRODUCTS THAT CAN POTENTIALLY BE SEEN FROM THE STORE EXTERIOR WILL HAVE A PRIVACY FILTER OBSTRUCTING ITS VIEW.

# A005.01 Privacy Filter Illustration

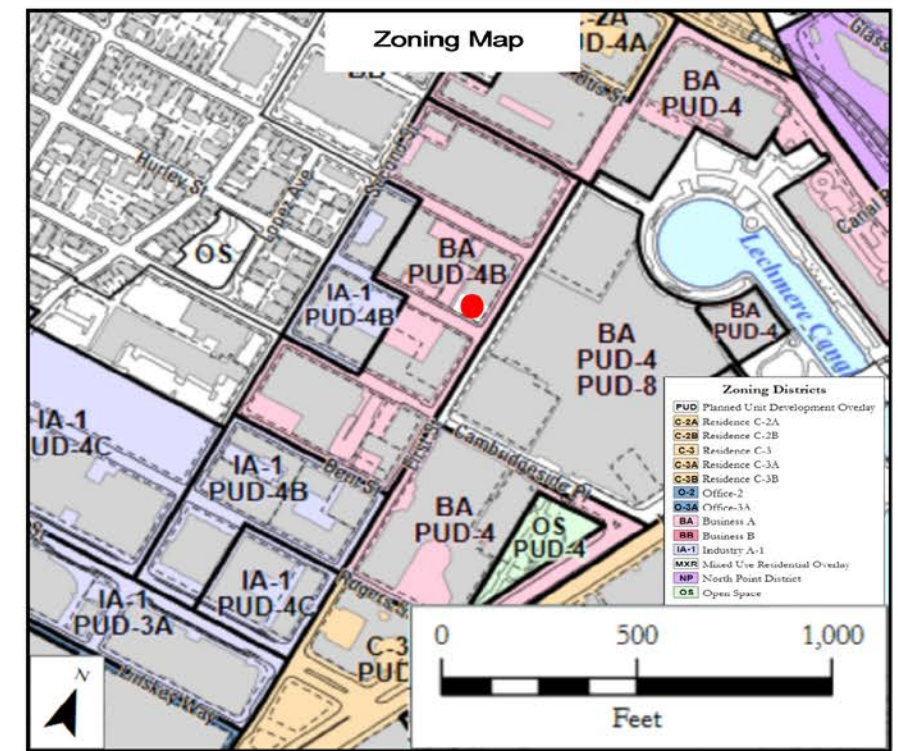




THERE ARE NO OPERATING RETAIL CANNABIS STORES WITHIN 1,800' OF THE PROPOSED ESTABLISHMENT.

THERE ARE NO K-12 SCHOOLS WITHIN 300' OF THE PROPOSED ESTABLISHMENT.

THERE ARE NO PLAYGROUNDS, ATHLETIC FIELDS, OR YOUTH RECREATION FACILITIES WITHIN 300' OF THE PROPOSED ESTABLISHMENT.



Zoning District: Business A/PUD 4B

### Legend:

- 1 CambridgeSide Galleria (Private Parking)
- 2 First Street Garage (Municipal Parking) - Zipcar
- 3 Registered Parking
- Shuttle/Bus Stop
- BlueBikes
- Bicycle Parking Racks (Public)