

4.1 View from Termeer Square



4.2 View from Third Street Looking North



4.3 View from Third Street Looking South



4.4 View from Third Street Looking East



4.5 View from Broad Canal



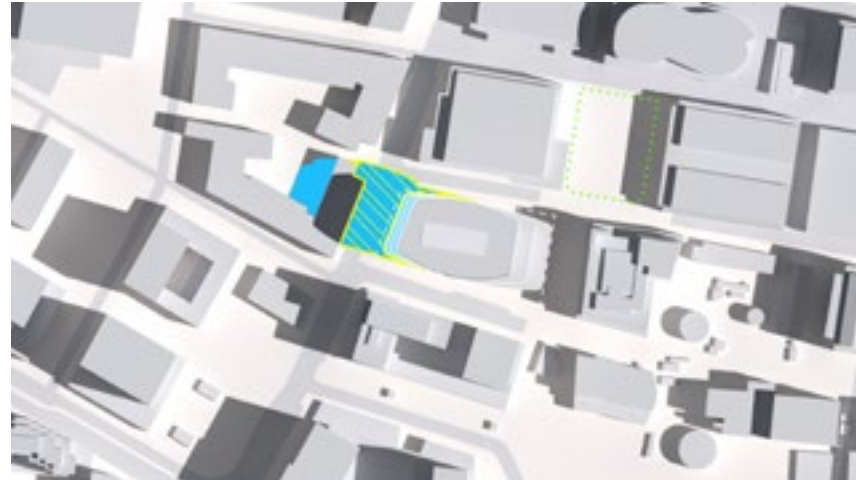
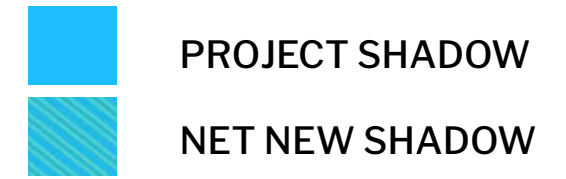
4.6 View from Winter Garden - Winter



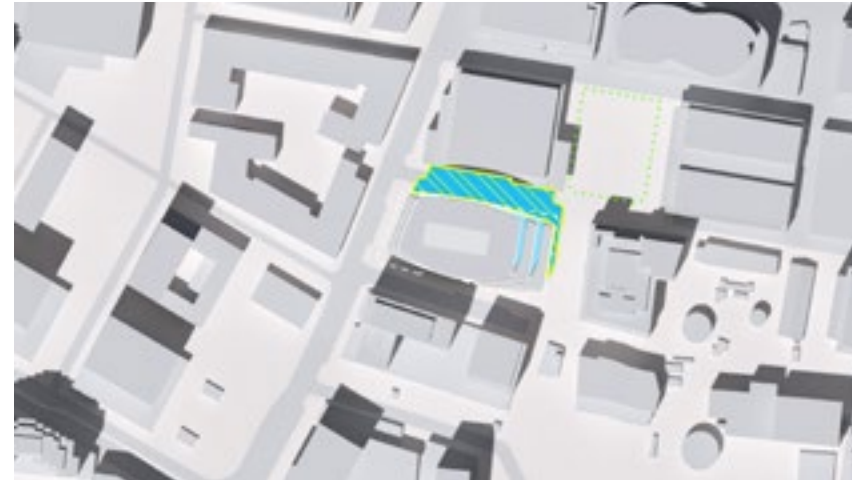
4.7 View Towards Ground Floor Public Commons



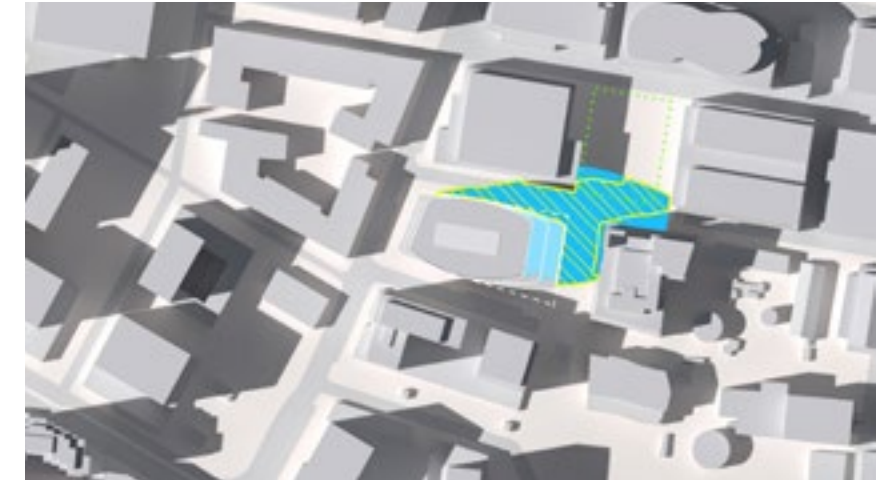
A.1 Shadow Study



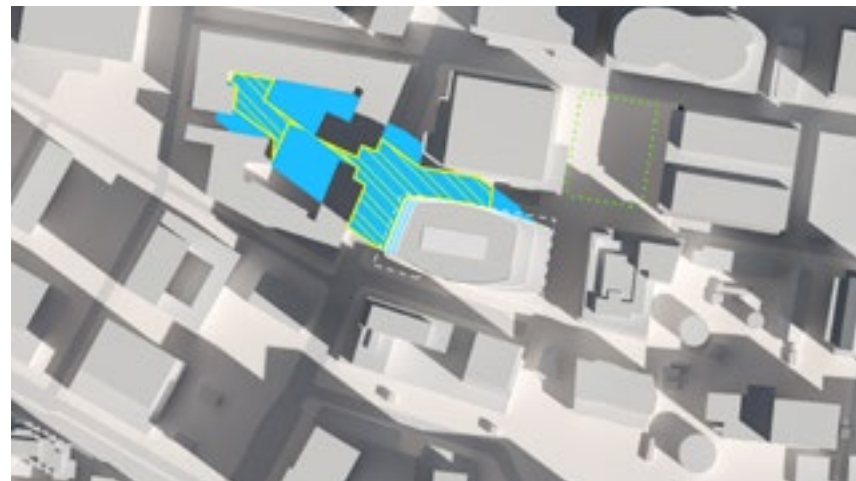
Summer 9:00 am



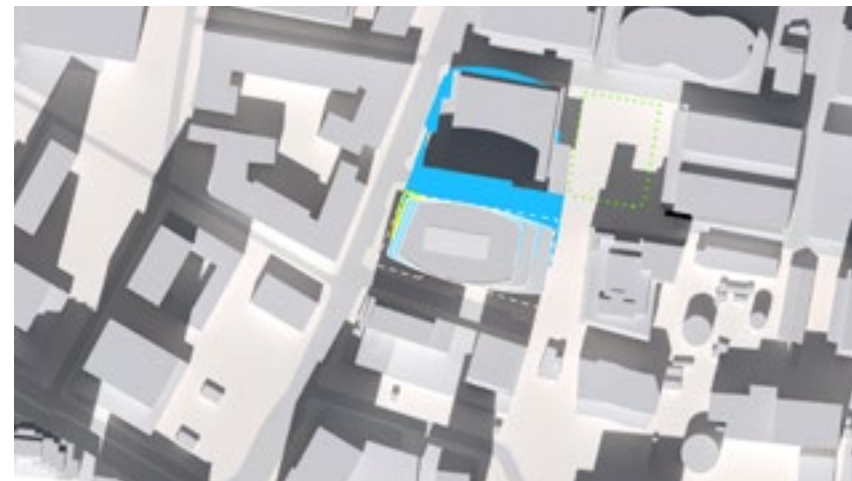
Summer 12:30 pm



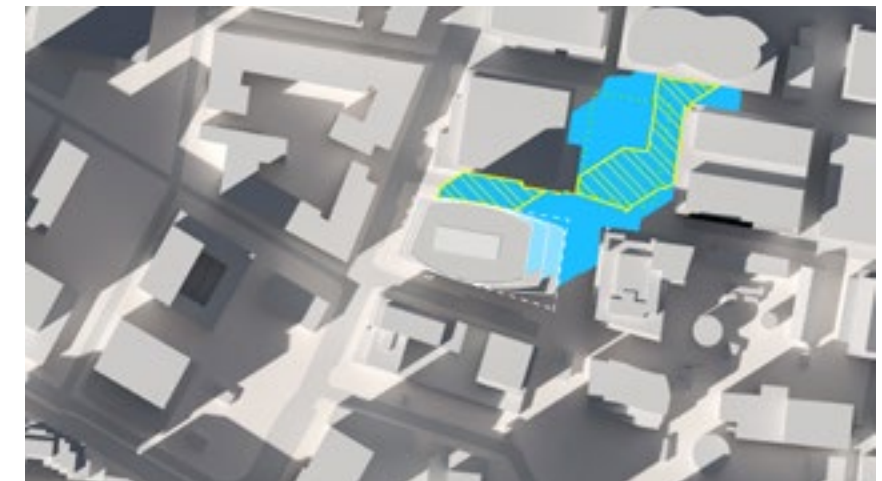
Summer 3:00 pm



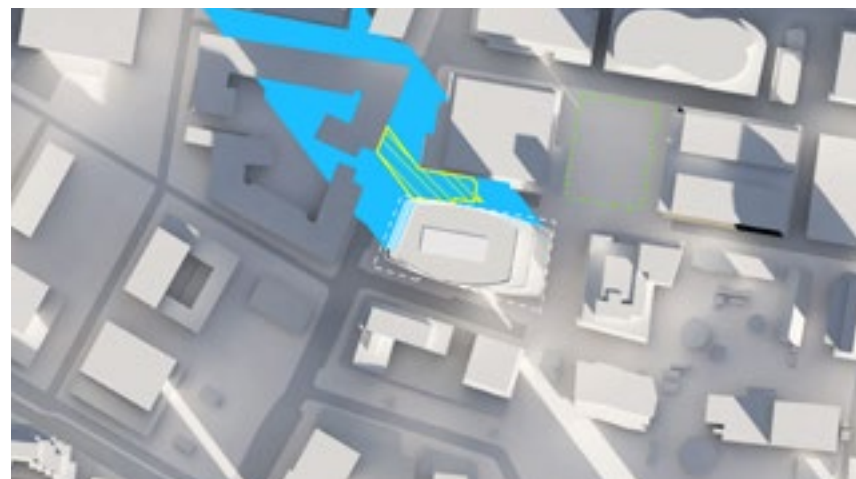
Spring/Fall 9:00 am



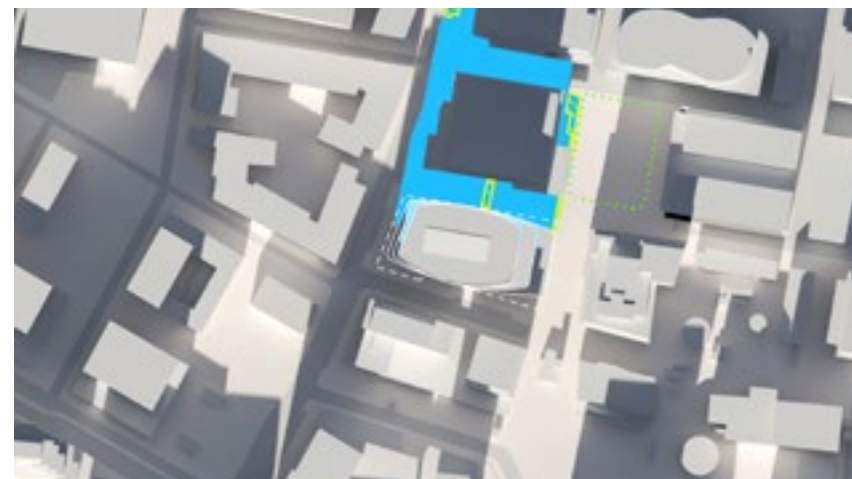
Spring/Fall 12:30 pm



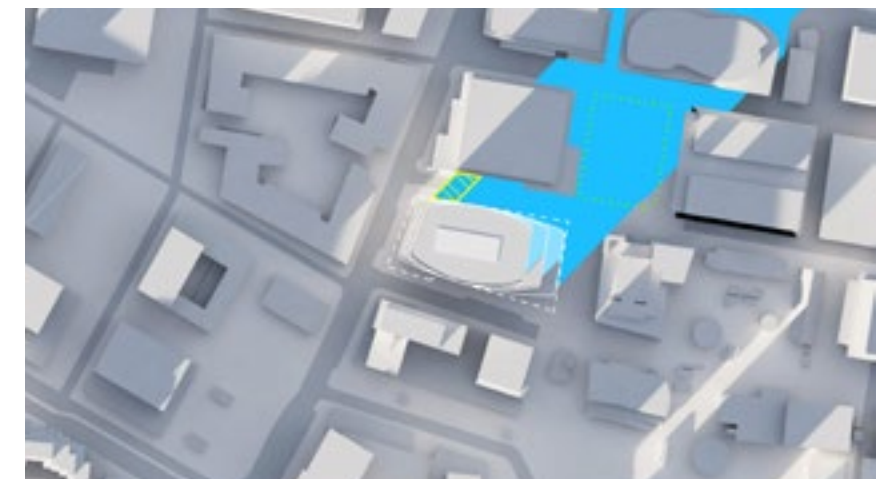
Spring/Fall 3:00 pm



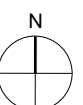
Winter 9:00 am



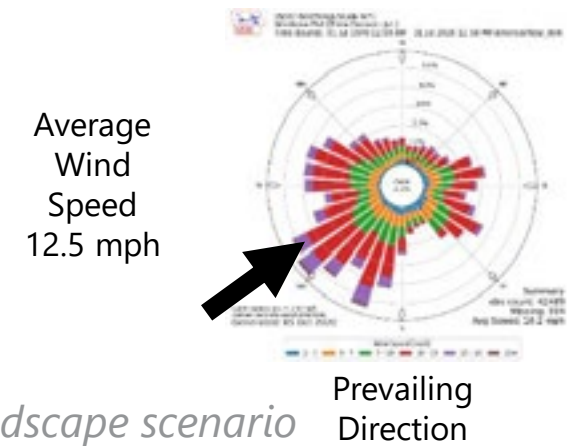
Winter 12:30 pm



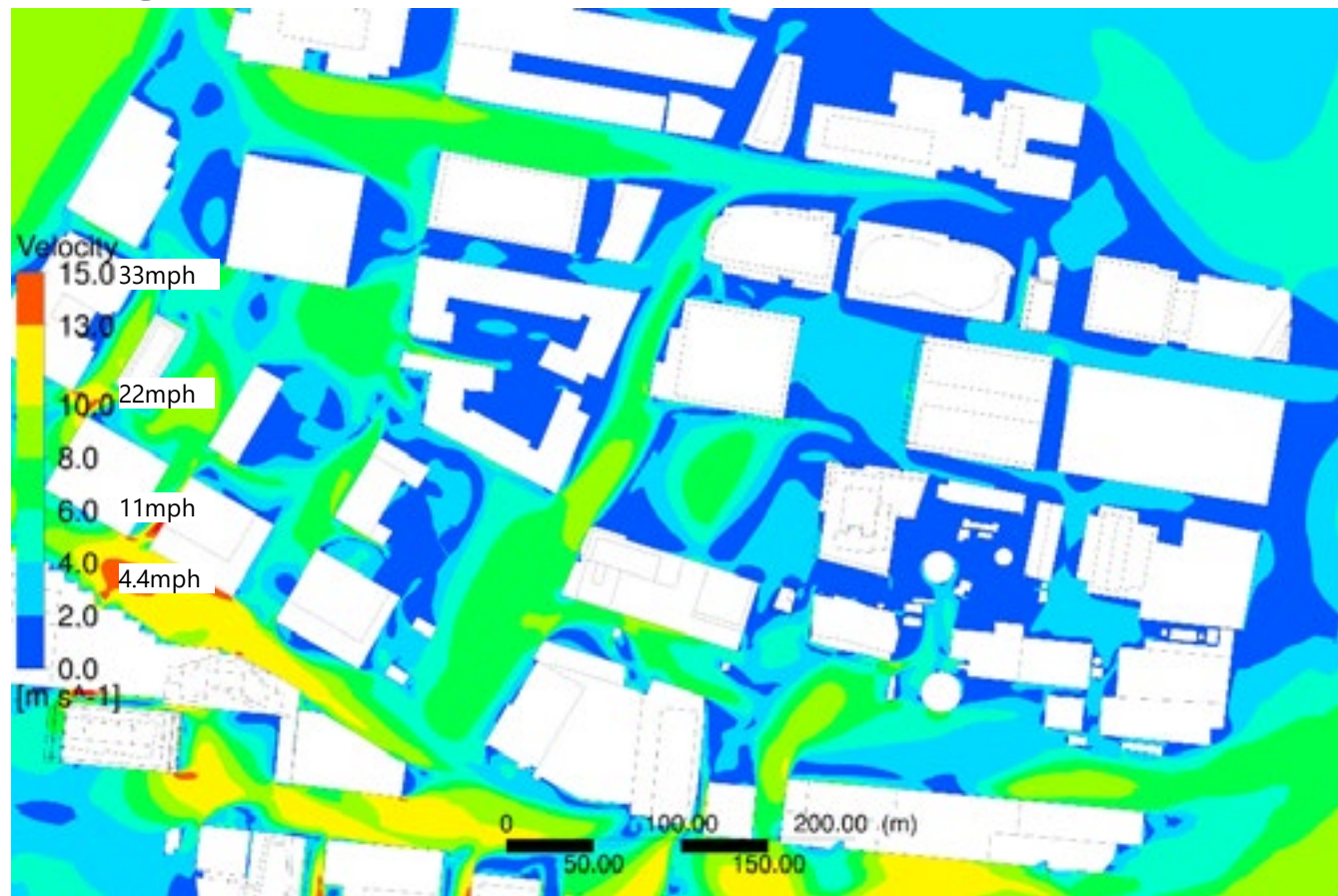
Winter 3:00 pm



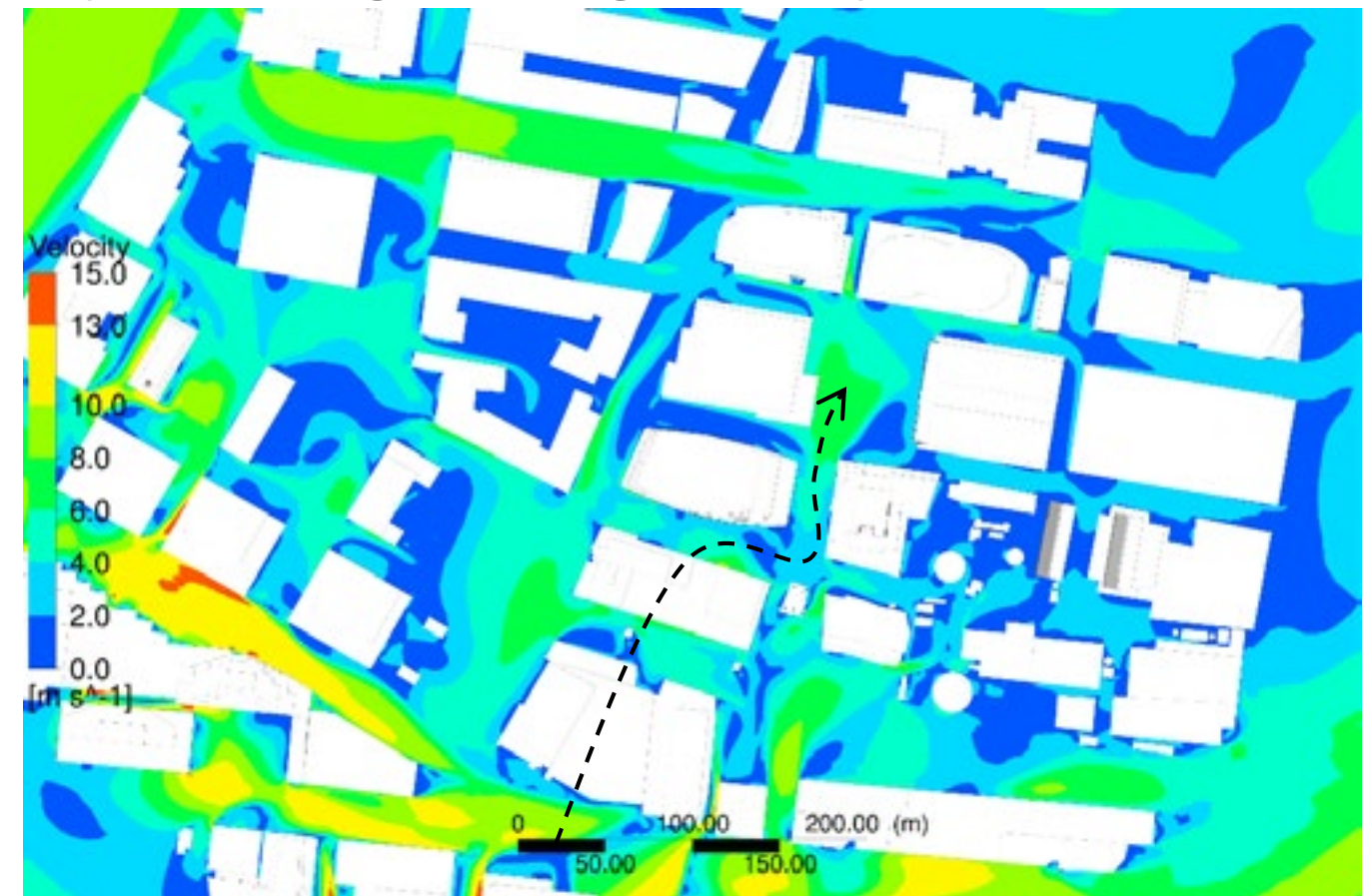
A.2 Wind Study - Summer



Existing conditions scenario



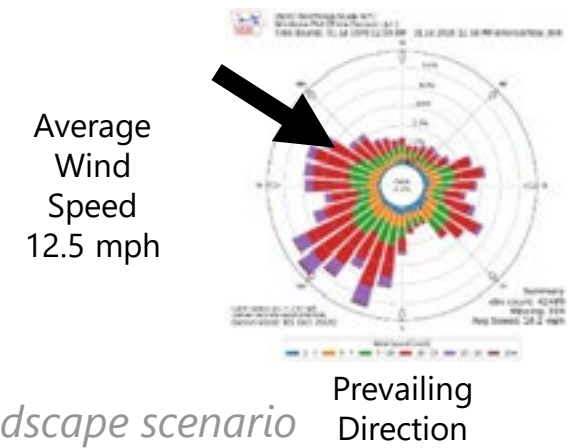
Proposed + Existing surroundings + Landscape scenario



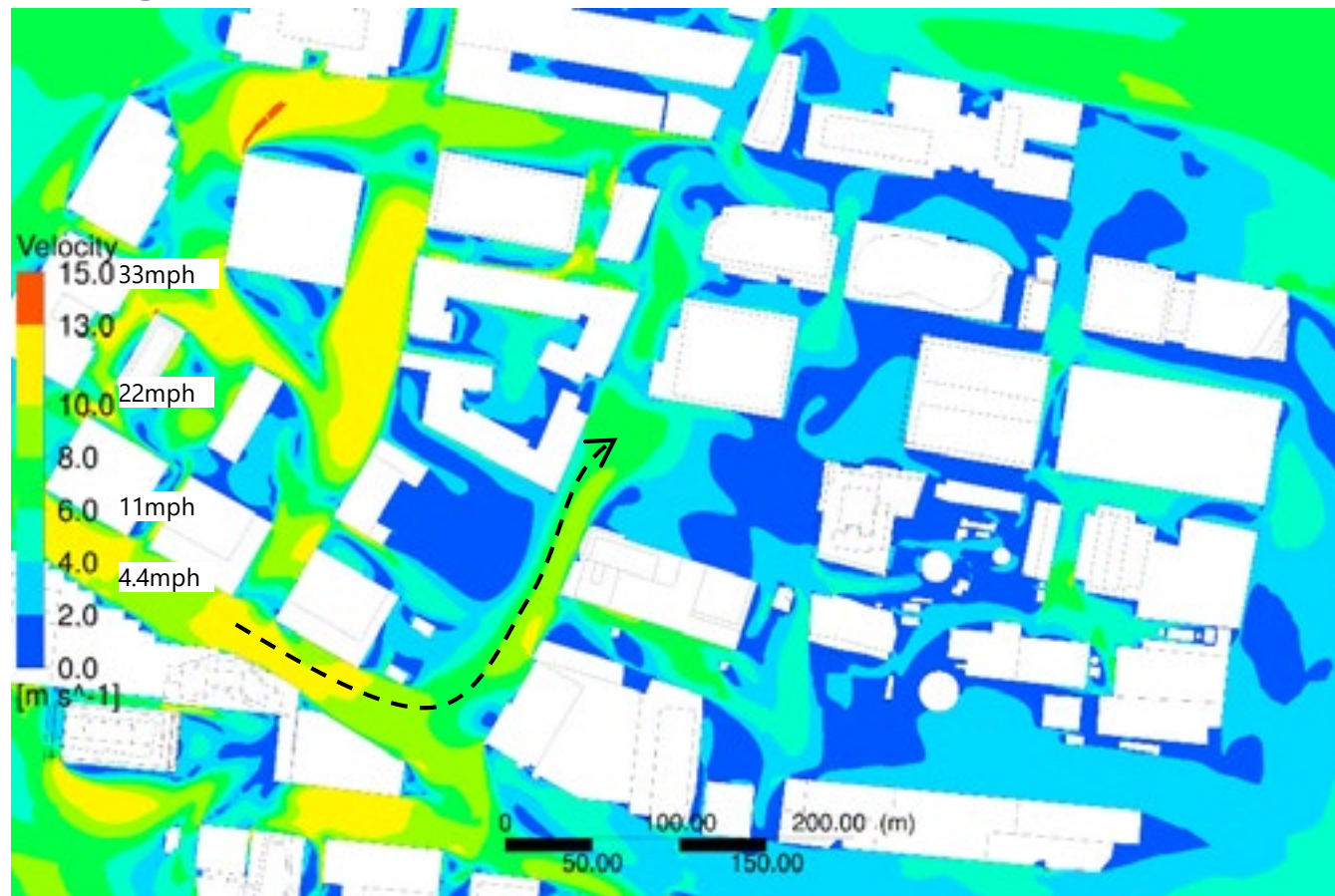
Comfort Category	GEM Speed (mph)	Description
Sitting	≤ 6	Calm or light breezes desired for outdoor restaurants and seating areas where one can read a paper without having it blown away
Standing	≤ 8	Gentle breezes suitable for main building entrances, bus stops, and other places where pedestrians may linger
Strolling	≤ 10	Moderate winds that would be appropriate for window shopping and strolling along a downtown street, plaza or park

Comfort Category	GEM Speed (mph)	Description
Walking	≤ 12	Relatively high speeds that can be tolerated if one's objective is to walk, run or cycle without lingering
Uncomfortable	> 12	Strong winds of this magnitude are considered a nuisance for all pedestrian activities, and wind mitigation is typically recommended

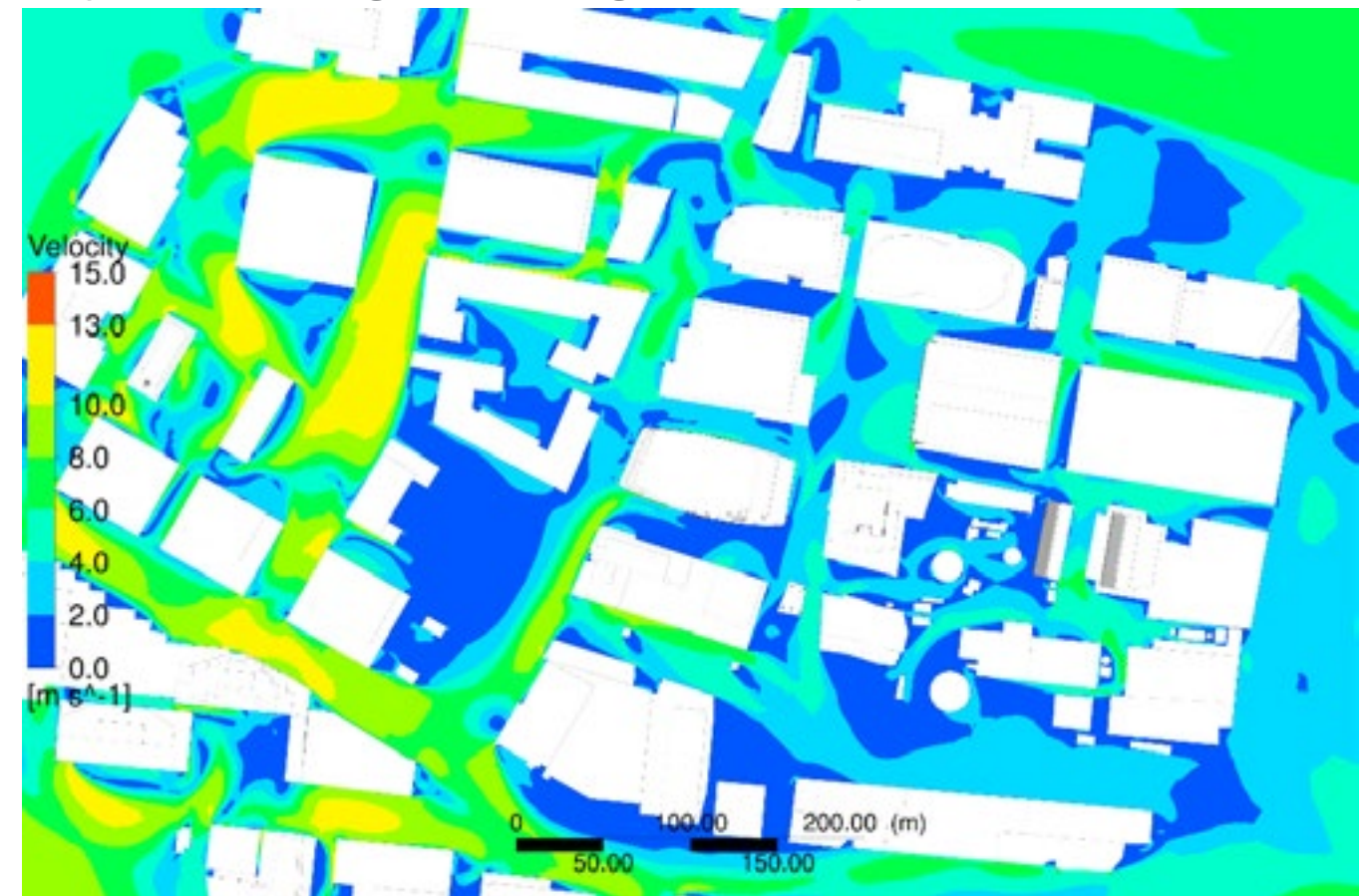
A.3 Wind Study - Winter



Existing conditions scenario



Proposed + Existing surroundings + Landscape scenario



Comfort Category	GEM Speed (mph)	Description
Sitting	≤ 6	Calm or light breezes desired for outdoor restaurants and seating areas where one can read a paper without having it blown away
Standing	≤ 8	Gentle breezes suitable for main building entrances, bus stops, and other places where pedestrians may linger
Strolling	≤ 10	Moderate winds that would be appropriate for window shopping and strolling along a downtown street, plaza or park

Comfort Category	GEM Speed (mph)	Description
Walking	≤ 12	Relatively high speeds that can be tolerated if one's objective is to walk, run or cycle without lingering
Uncomfortable	> 12	Strong winds of this magnitude are considered a nuisance for all pedestrian activities, and wind mitigation is typically recommended

A.6 Tree Study - Existing Conditions

TREE #	SPECIES	COMMON NAME	DBH	PUBLIC OR PRIVATE	SIGNIFICANT PRIVATE	STATUS	CONDITION NOTE	TREE #	SPECIES	COMMON NAME	DBH	PUBLIC OR PRIVATE	SIGNIFICANT PRIVATE	STATUS	CONDITION NOTE
1	Sophora Japonica	Japanese Pagoda Tree	12.5"	Public	N	Protect	Trunk Injury	16	Ginkgo Biloba	Ginkgo	2"	Private	N	Remove	
2	Sophora Japonica	Japanese Pagoda Tree	13.5"	Public	N	Protect		17	Ginkgo Biloba	Ginkgo	2"	Private	N	Remove	
3	Sophora Japonica	Japanese Pagoda Tree	12.5"	Public	N	Protect		18	Ginkgo Biloba	Ginkgo	4"	Private	N	Remove	
4	Sophora Japonica	Japanese Pagoda Tree	12"	Public	N	Protect	Trunk Injury	19	Ginkgo Biloba	Ginkgo	4"	Private	N	Remove	Trunk Damaged
5	Sophora Japonica	Japanese Pagoda Tree	10"	Private	Y	Remove		20	Catalpa Speciosa	Catalpa	8"	Private	Y	Remove	Aphids
6	Sophora Japonica	Japanese Pagoda Tree	6"	Private	Y	Remove		21	Catalpa Speciosa	Catalpa	6"	Private	Y	Remove	Aphids
7	Catalpa Speciosa	Catalpa	6"	Private	Y	Remove	Signs of Aphid Infection	22	Catalpa Speciosa	Catalpa	8"	Private	Y	Remove	Basal Trunk Injury, Aphids
8	Catalpa Speciosa	Catalpa	6"	Private	Y	Remove	Signs of Aphid Infection	23	Catalpa Speciosa	Catalpa	4"	Private	N	Remove	Aphids
9	Catalpa Speciosa	Catalpa	6"	Private	Y	Remove	Signs of Aphid Infection	24	Catalpa Speciosa	Catalpa	10"	Private	Y	Remove	Aphids
10-14	Zelkova Serrata	Japanese Zelkova	3"	Private	N	Remove		25-27	Amelanchier Canadensis	Serviceberry	4"/Multi	Private	N	Remove	Aphids
15	Ginkgo Biloba	Ginkgo	4"	Private	N	Remove									

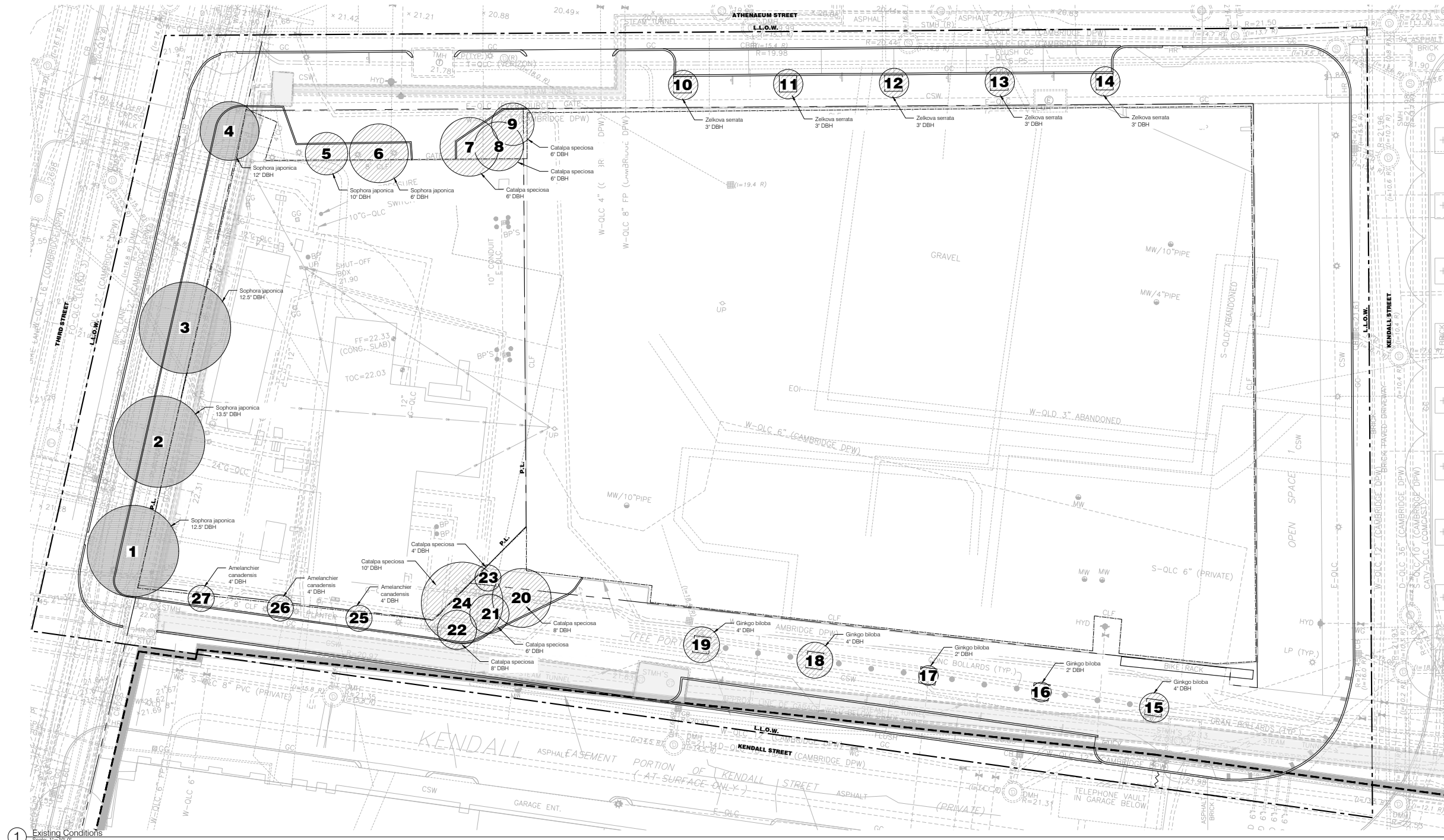
Total DBH of Significant Private Trees: 66"

LANDSCAPE ARCHITECTURAL LEGEND 585 THIRD ST

- P.L. Property Line
- L.L.O.W. Landscape Limit of Work

TREE PROTECTION AND REMOVAL LEGEND

- Existing Public Tree to Remain and be Protected
- Existing Private Tree



1 Existing Conditions
Scale: 1"=10'-0"



A.7 Tree Study - Tree Protection and Removal Plan

TREE #	SPECIES	COMMON NAME	DBH	PUBLIC OR PRIVATE	SIGNIFICANT PRIVATE	STATUS	CONDITION NOTE	TREE #	SPECIES	COMMON NAME	DBH	PUBLIC OR PRIVATE	SIGNIFICANT PRIVATE	STATUS	CONDITION NOTE
1	Sophora Japonica	Japanese Pagoda Tree	12.5"	Public	N	Protect	Trunk Injury	16	Ginkgo Biloba	Ginkgo	2"	Private	N	Remove	
2	Sophora Japonica	Japanese Pagoda Tree	13.5"	Public	N	Protect		17	Ginkgo Biloba	Ginkgo	2"	Private	N	Remove	
3	Sophora Japonica	Japanese Pagoda Tree	12.5"	Public	N	Protect		18	Ginkgo Biloba	Ginkgo	4"	Private	N	Remove	
4	Sophora Japonica	Japanese Pagoda Tree	12"	Public	N	Protect	Trunk Injury	19	Ginkgo Biloba	Ginkgo	4"	Private	N	Remove	Trunk Damaged
5	Sophora Japonica	Japanese Pagoda Tree	10"	Private	Y	Remove		20	Catalpa Speciosa	Catalpa	8"	Private	Y	Remove	Aphids
6	Sophora Japonica	Japanese Pagoda Tree	6"	Private	Y	Remove		21	Catalpa Speciosa	Catalpa	6"	Private	Y	Remove	Aphids
7	Catalpa Speciosa	Catalpa	6"	Private	Y	Remove	Signs of Aphid Infection	22	Catalpa Speciosa	Catalpa	8"	Private	Y	Remove	Basal Trunk Injury, Aphids
8	Catalpa Speciosa	Catalpa	6"	Private	Y	Remove	Signs of Aphid Infection	23	Catalpa Speciosa	Catalpa	4"	Private	N	Remove	Aphids
9	Catalpa Speciosa	Catalpa	6"	Private	Y	Remove	Signs of Aphid Infection	24	Catalpa Speciosa	Catalpa	10"	Private	Y	Remove	Aphids
10-14	Zelkova Serrata	Japanese Zelkova	3"	Private	N	Remove		25-27	Amelanchier Canadensis	Serviceberry	4"/Multi	Private	N	Remove	Aphids
15	Ginkgo Biloba	Ginkgo	4"	Private	N	Remove									

Total DBH of Significant Private Trees: 66"
Total DBH of Significant Private Trees Saved: 0"
DBH to Mitigate: 66"

LANDSCAPE ARCHITECTURAL LEGEND 585 THIRD ST

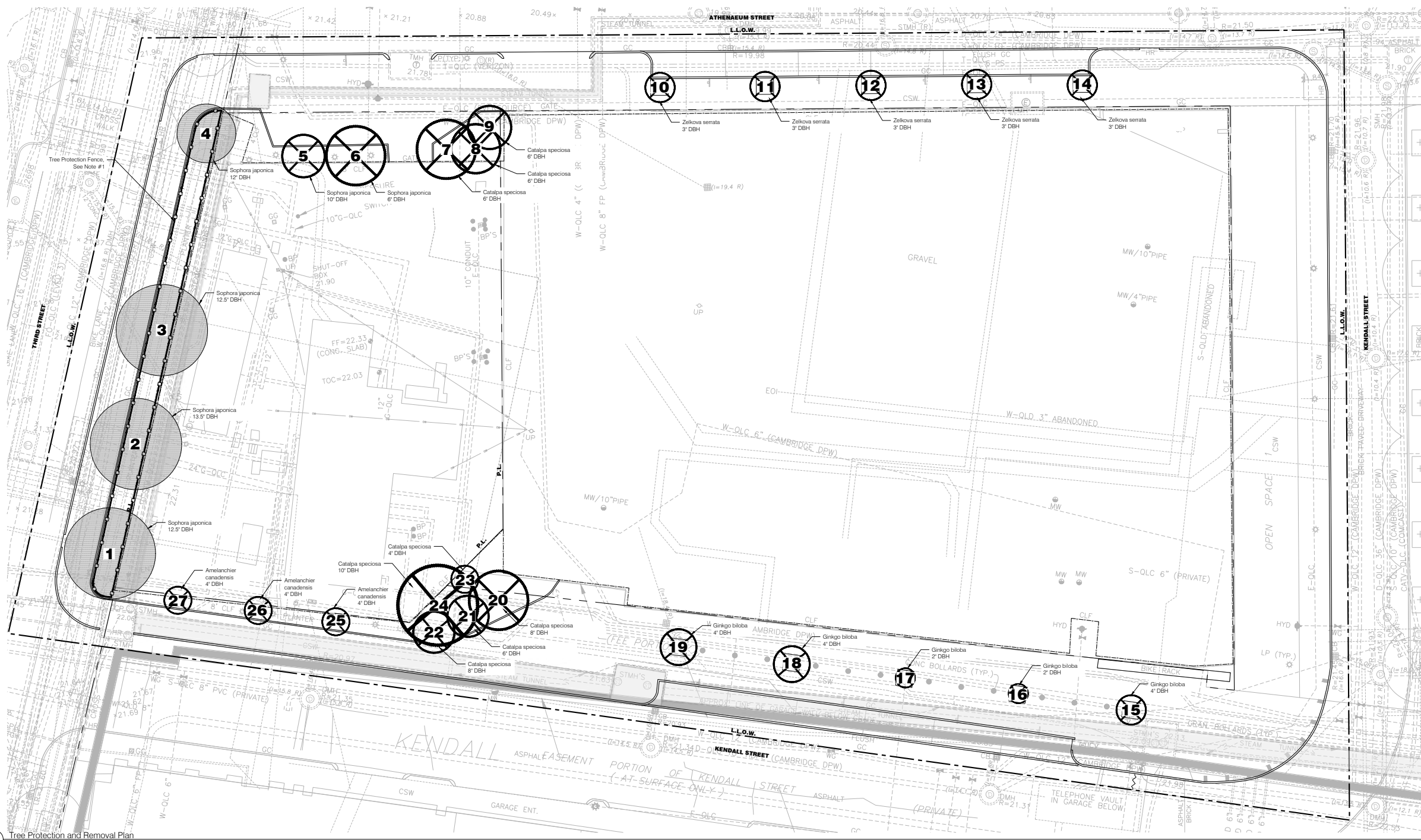
P.L. Property Line
 L.L.O.W. Landscape Limit of Work

TREE PROTECTION AND REMOVAL LEGEND

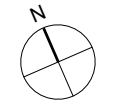
(Circle with dot) Existing Public Tree to Remain and be Protected
 (Circle with X) Existing Tree to be Removed
 (Line with T) Tree Protection Fence

TREE PROTECTION AND REMOVAL NOTES

- TREE PROTECTION FENCE:** Contractor Shall Install Tree Protection Fence Immediately Following Demo/Removals and Prior to Pavement Preparation and Installation. No Work, Equipment, Tools, Materials, or Laborers Shall be Within the Tree Protection Fence. Driven Metal Chains to be maintained for the duration of construction. Soil to be protected, erosion wadde at the base of the fence wrapped in silt fence to prevent sediment from entering the protected soil zone. Canopy is to be reduced by a certified arborist prior to the start of construction and the surrounding soils to be air spaded and amended with composted at the end of the construction process.
- AIR SPADING:** Contractor Shall Air Spade Tree Roots on Protected Trees to Identify and Avoid Conflict with Any Major Tree Roots During Construction.



1 Tree Protection and Removal Plan
Scale: 1" = 10'-0"



A.8 Tree Study - Proposed Tree Plan

TREE #	SPECIES	COMMON NAME	DBH	PUBLIC OR PRIVATE	SIGNIFICANT PRIVATE	STATUS	CONDITION NOTE	TREE #	SPECIES	COMMON NAME	DBH	PUBLIC OR PRIVATE	SIGNIFICANT PRIVATE	STATUS	CONDITION NOTE
1	Sophora Japonica	Japanese Pagoda Tree	12.5"	Public	N	Protect	Trunk Injury	16	Ginkgo Biloba	Ginkgo	2"	Private	N	Remove	
2	Sophora Japonica	Japanese Pagoda Tree	13.5"	Public	N	Protect		17	Ginkgo Biloba	Ginkgo	2"	Private	N	Remove	
3	Sophora Japonica	Japanese Pagoda Tree	12.5"	Public	N	Protect		18	Ginkgo Biloba	Ginkgo	4"	Private	N	Remove	
4	Sophora Japonica	Japanese Pagoda Tree	12"	Public	N	Protect	Trunk Injury	19	Ginkgo Biloba	Ginkgo	4"	Private	N	Remove	Trunk Damaged
5	Sophora Japonica	Japanese Pagoda Tree	10"	Private	Y	Remove		20	Catalpa Speciosa	Catalpa	8"	Private	N	Remove	Aphids
6	Sophora Japonica	Japanese Pagoda Tree	6"	Private	Y	Remove		21	Catalpa Speciosa	Catalpa	6"	Private	Y	Remove	Aphids
7	Catalpa Speciosa	Catalpa	6"	Private	Y	Remove	Signs of Aphid Infection	22	Catalpa Speciosa	Catalpa	8"	Private	N	Remove	Basal Trunk Injury, Aphids
8	Catalpa Speciosa	Catalpa	6"	Private	Y	Remove	Signs of Aphid Infection	23	Catalpa Speciosa	Catalpa	4"	Private	N	Remove	Aphids
9	Catalpa Speciosa	Catalpa	6"	Private	Y	Remove	Signs of Aphid Infection	24	Catalpa Speciosa	Catalpa	10"	Private	Y	Remove	Aphids
10-14	Zelkova Serrata	Japanese Zelkova	3"	Private	N	Remove		25-27	Amelanchier Canadensis	Serviceberry	4"Multi	Private	N	Remove	Aphids
15	Ginkgo Biloba	Ginkgo	4"	Private	N	Remove									

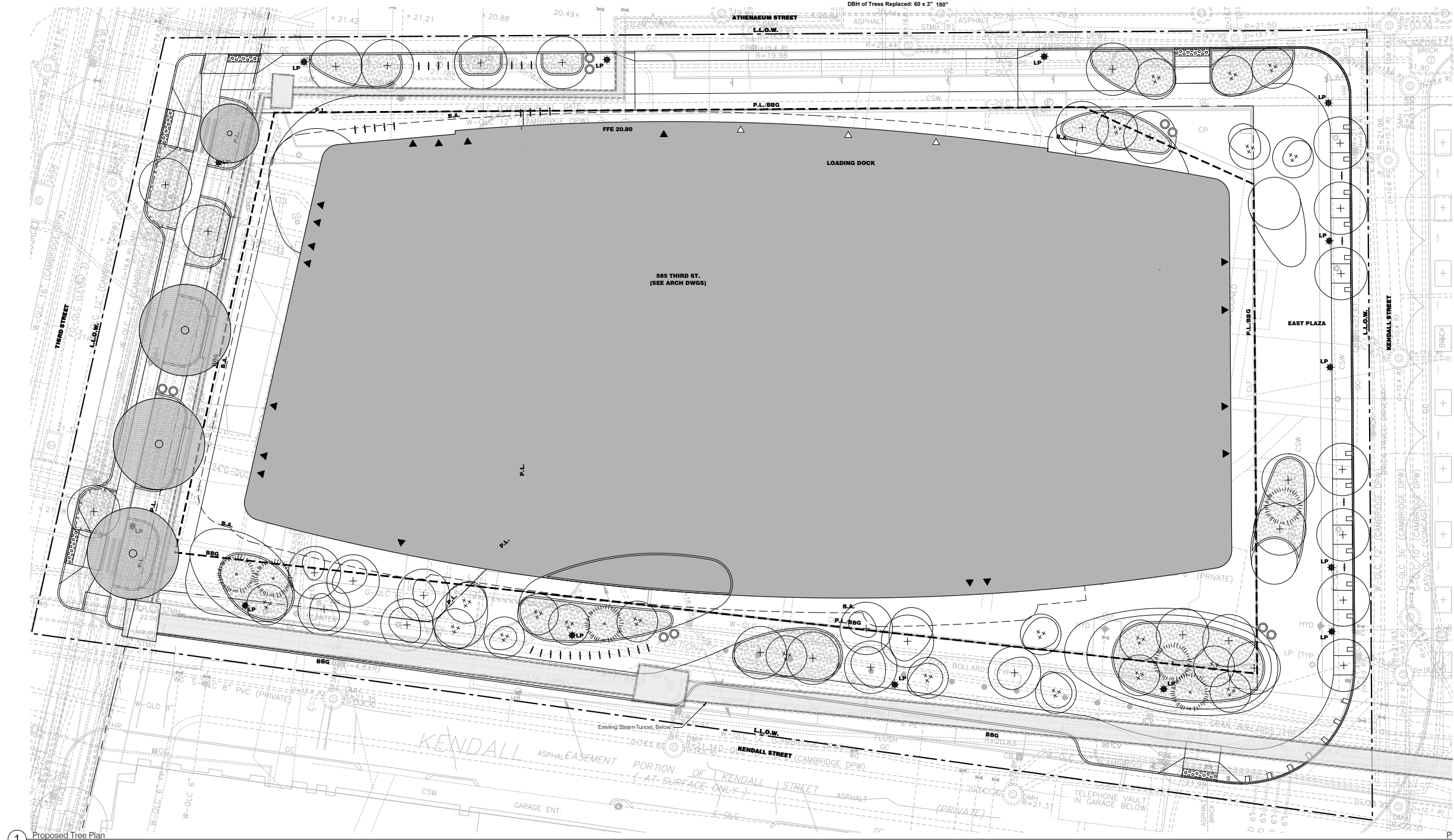
Total DBH of Significant Private Trees: 66"
 Total DBH of Significant Private Trees Saved: 0
 DBH to Mitigate: 66"
 DBH of Trees Replaced: 60 x 3" 180"

LANDSCAPE ARCHITECTURAL LEGEND 585 THIRD ST

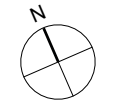
- P.L. — Property Line
- L.L.O.W. — Landscape Limit of Work
- B.A. — Building Above
- B.B.G. — Building Below Grade
- ▲ Building Entrance
- △ Parking Lot / Loading Dock Entrance

TREE PROTECTION AND REMOVAL LEGEND

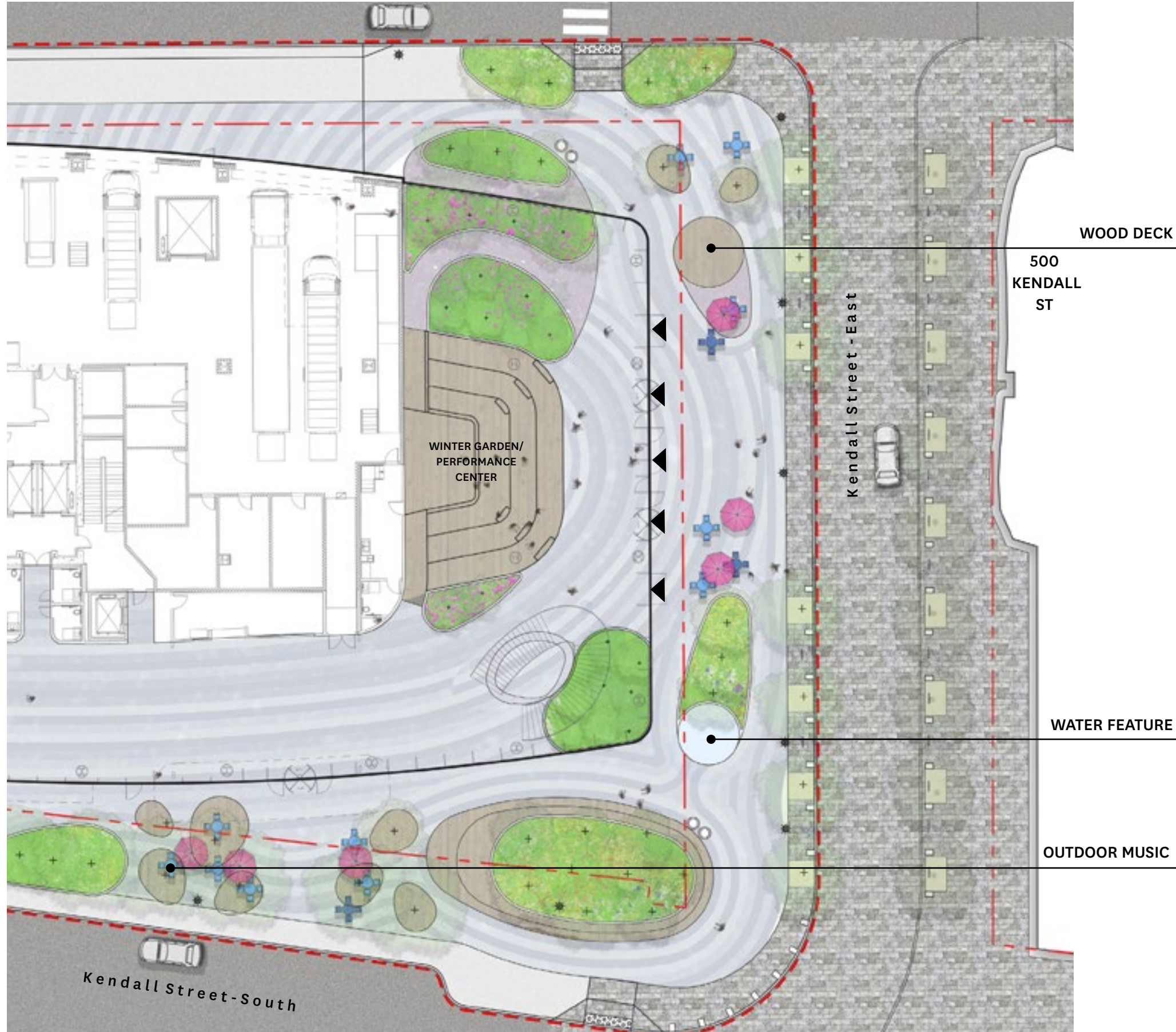
- Existing Public Tree to Remain and be Protected
- ⊕ Proposed Tree - Deciduous
- ⊕⊕ Proposed Tree - Deciduous Multi-Stem
- ⊙ Proposed Tree - Evergreen



1 Proposed Tree Plan
 Scale: 1" = 10'-0"



A.9 Landscape Plan - Daily Setup



WOOD DECK

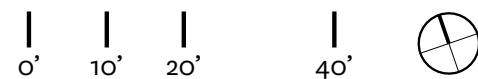
500
KENDALL
ST



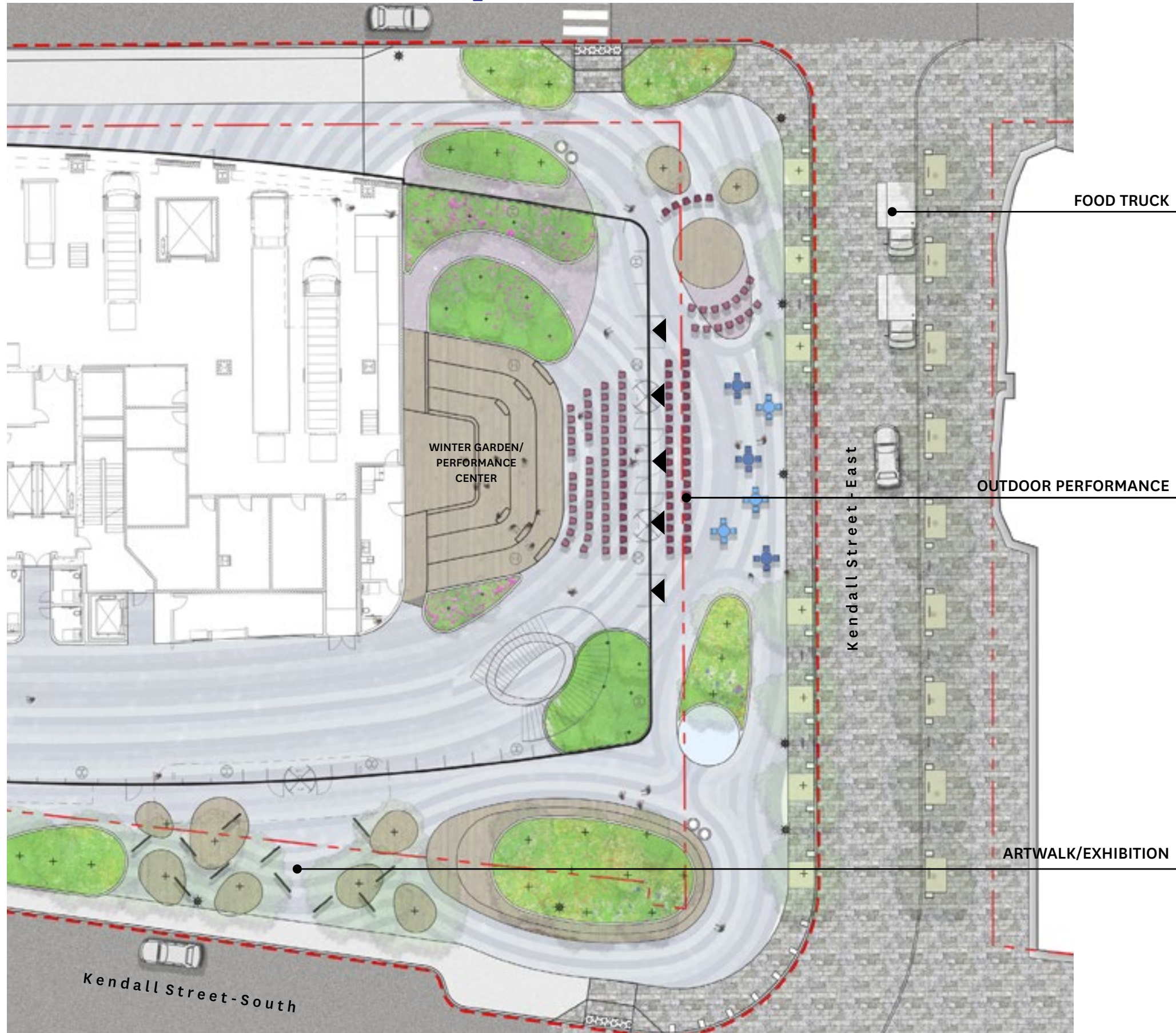
WATER FEATURE



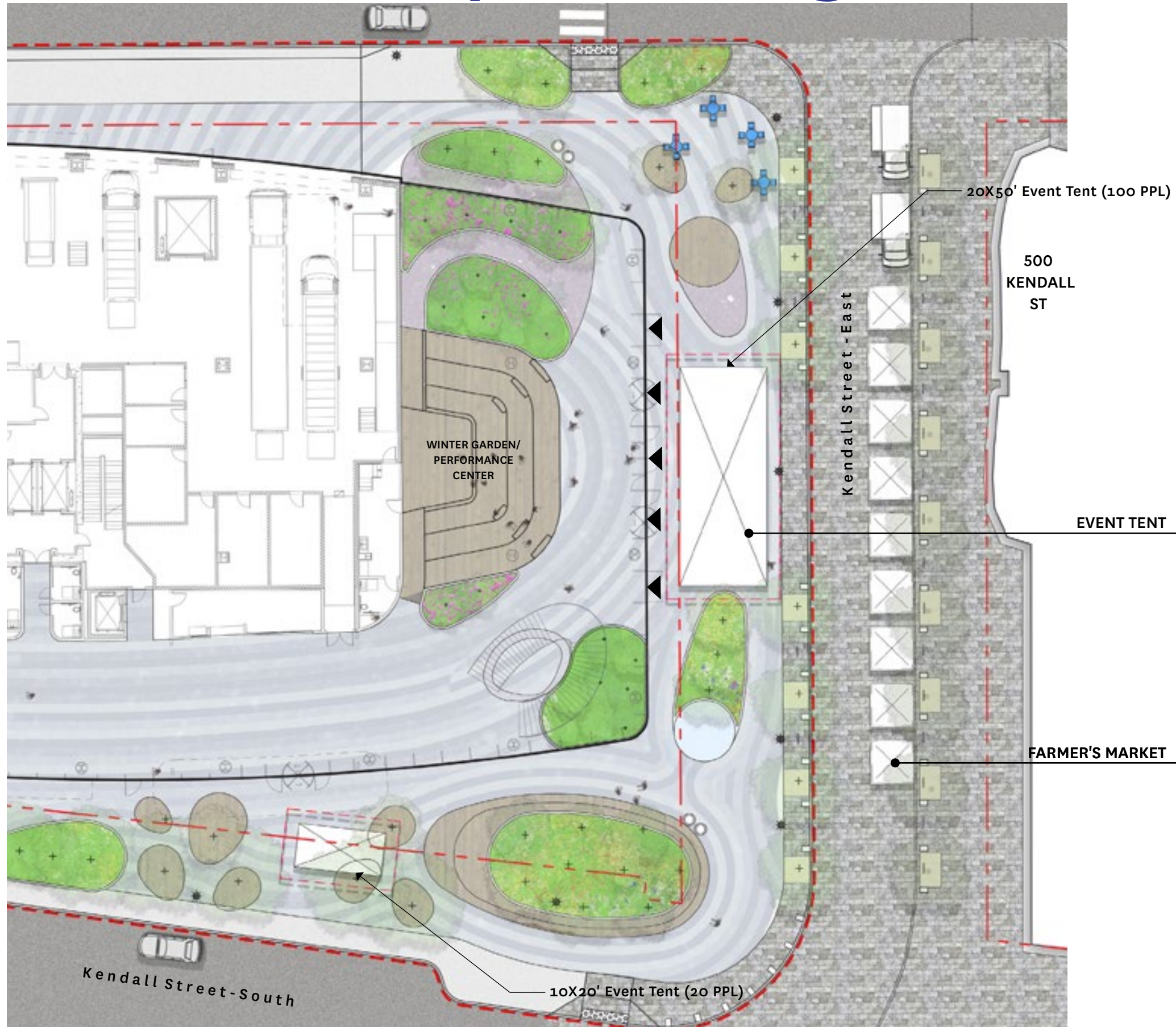
OUTDOOR MUSIC



A.10 Landscape Plan - Theater Event



A.11 Landscape Plan - Large Event



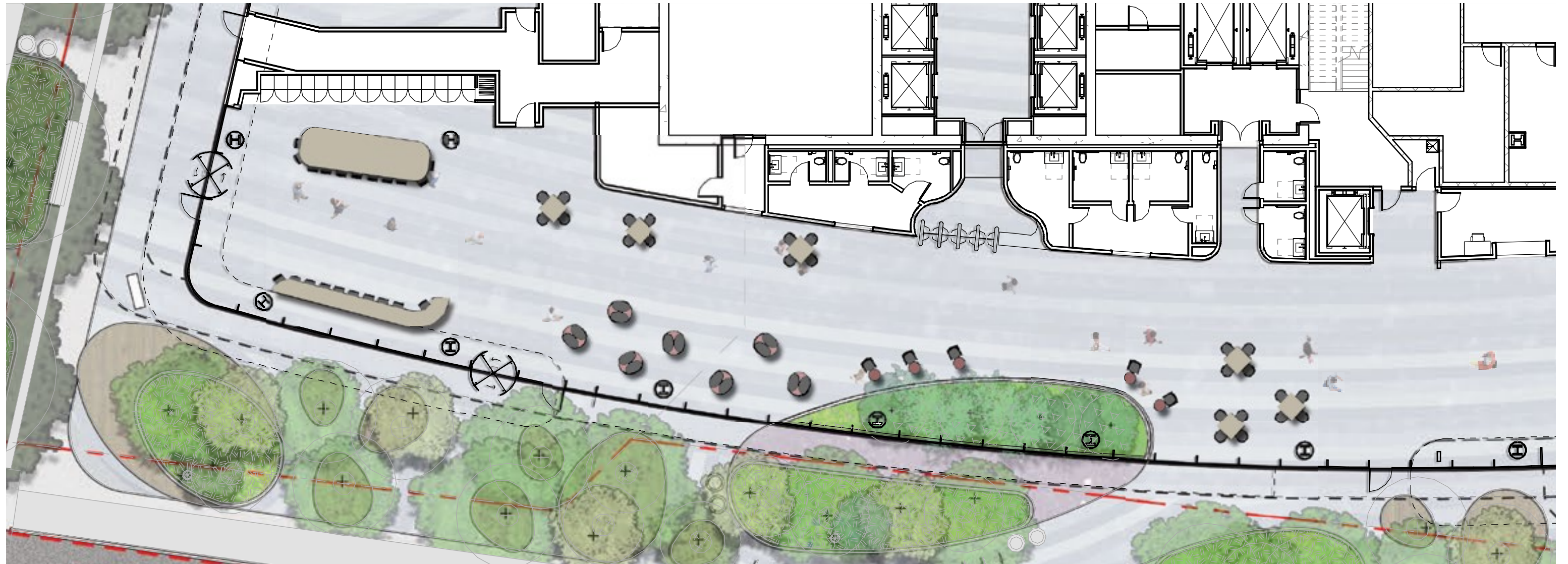
EVENT TENT



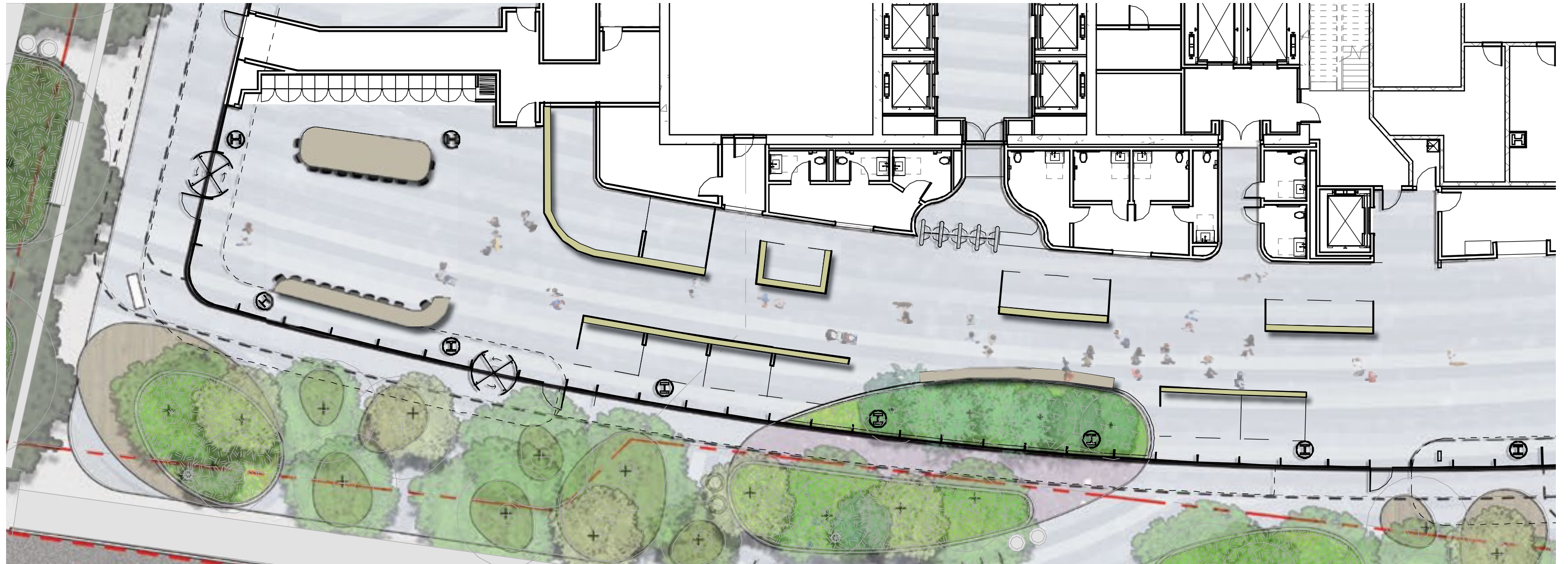
FARMER'S MARKET



A.12 Ground Floor Public Commons - Daily Setup



A.13 Ground Floor Public Commons - Market



A.14 Ground Floor Public Commons - Gallery

