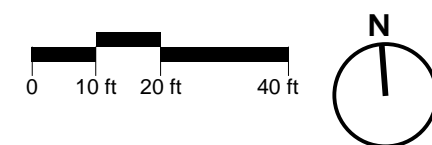


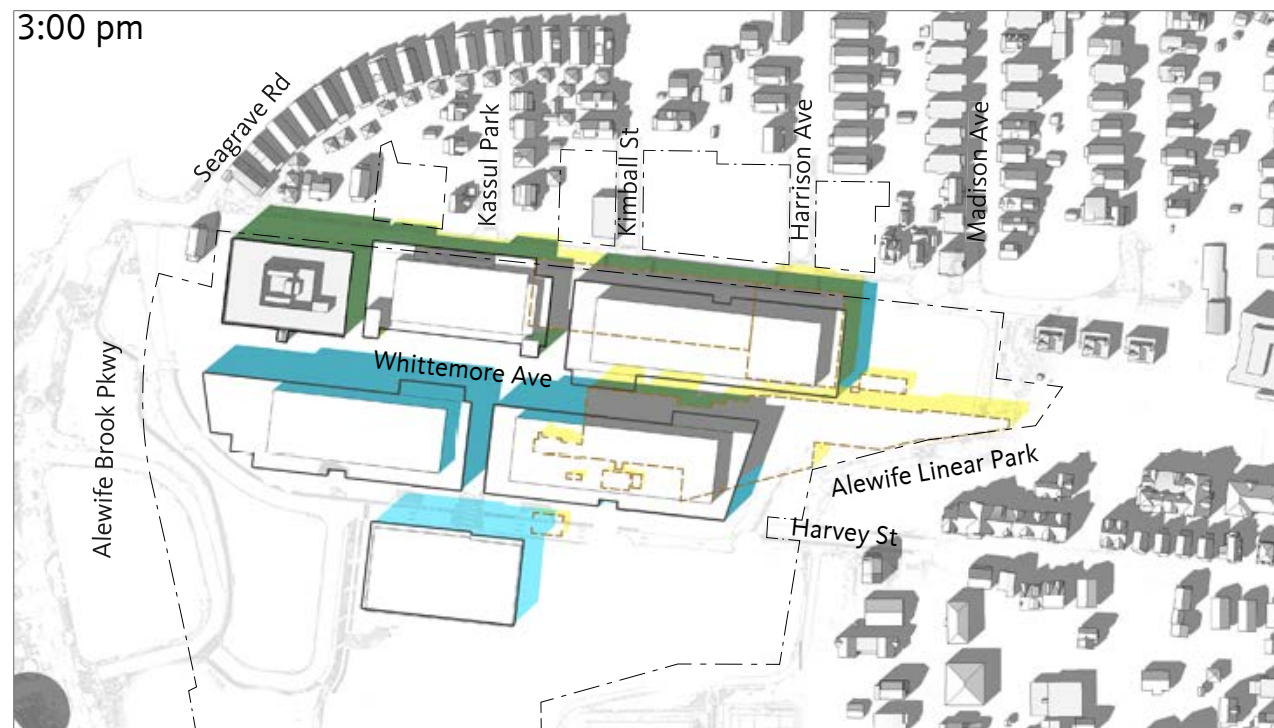
LEGEND:

- EXISTING SHADOWS REMOVED
- EXISTING SHADOWS TO REMAIN
- NEW NET SHADOWS
- EXISTING FOOTPRINT



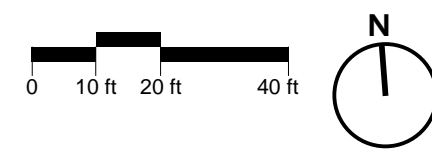
36-64 WHITTEMORE AVE.

SHADOW STUDIES: SUMMER SOLSTICE - JUNE 21



LEGEND:

- EXISTING SHADOWS REMOVED
- EXISTING SHADOWS TO REMAIN
- NEW NET SHADOWS
- EXISTING FOOTPRINT



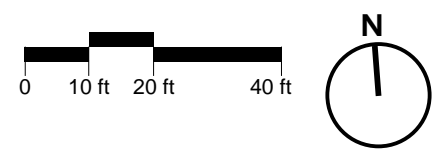
36-64 WHITTEMORE AVE.

SHADOW STUDIES: FALL EQUINOX - SEPT 21



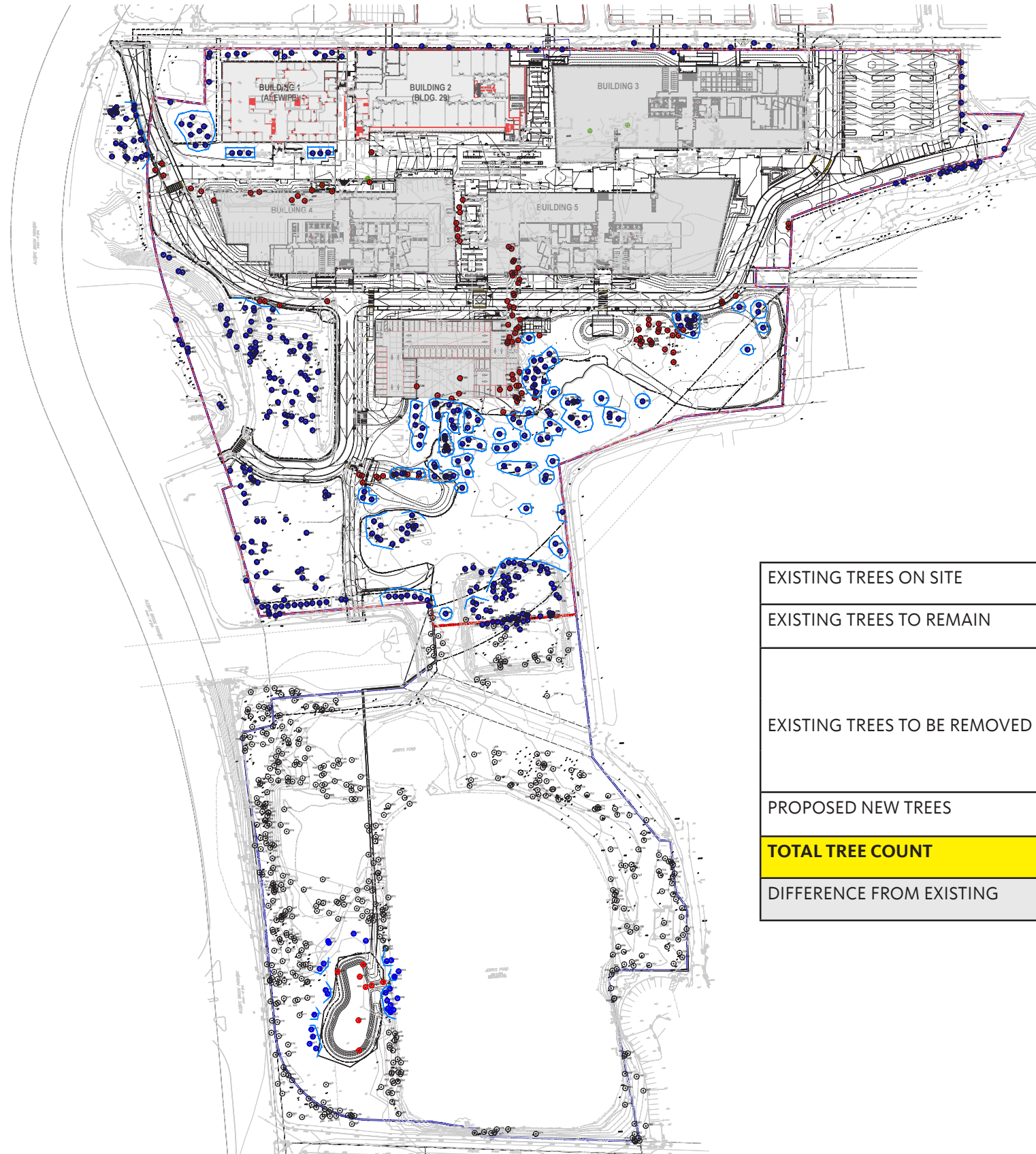
LEGEND:

- EXISTING SHADOWS REMOVED
- EXISTING SHADOWS TO REMAIN
- NEW NET SHADOWS
- EXISTING FOOTPRINT



36-64 WHITTEMORE AVE.

SHADOW STUDIES: WINTER SOLSTICE - DEC 21



NO TREES ARE BEING REMOVED IN AREAS WHERE SOIL IS NOT BEING DISTURBED

TO MITIGATE THE REMOVED TREES, IQHQ WILL BE PLANING 656 NEW TREES. THIS IS OVER 540 TREES IN ADDITION TO THE REMOVED TREE COUNT

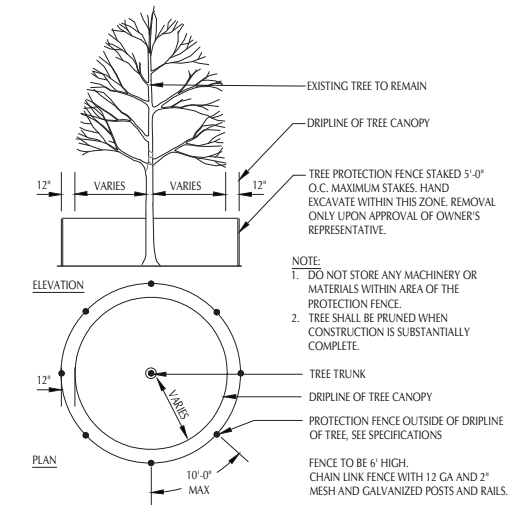
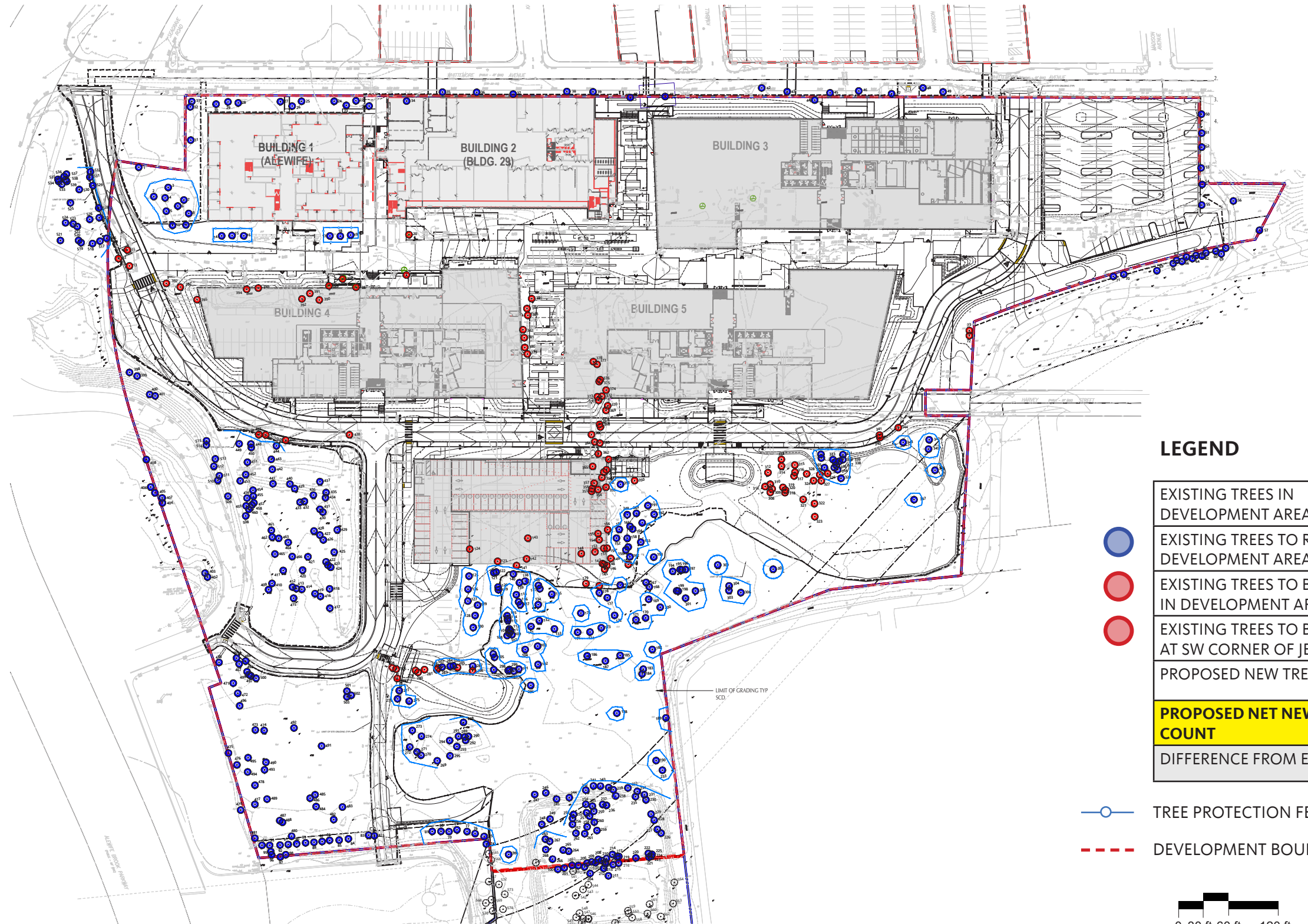
WHEN COMPLETE, OVER 1,460 TREES WILL BE LOCATED ON THE OVERALL PROPERTY

		DEVELOPMENT AREA	JERRY'S POND	TOTAL
EXISTING TREES ON SITE		462	501	963
EXISTING TREES TO REMAIN		354	453	807
EXISTING TREES TO BE REMOVED	Due to condition or close proximity to trees	108	40	148
	At SW corner of Jerry's Pond	-	8	8
	Total	(108)	(48)	(156)
PROPOSED NEW TREES		656	TBD	656
TOTAL TREE COUNT		1,002	453	1,463
DIFFERENCE FROM EXISTING		+540	-48	+492



36-64 WHITTEMORE AVE.

TREE PROTECTION PLAN DEVELOPMENT SITE & COMMITMENT AREAS



LEGEND

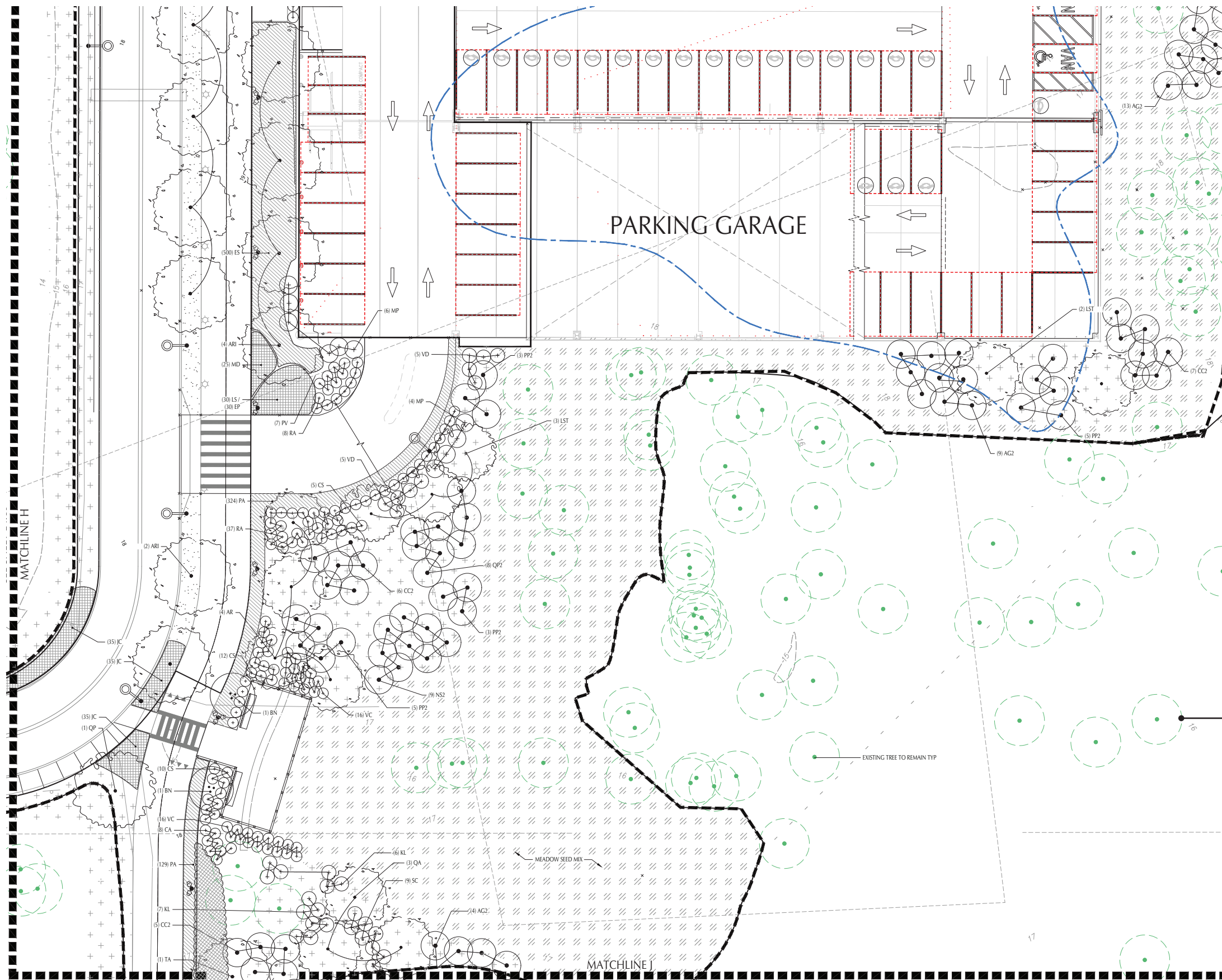
-
-
-
-

LEGEND	QUANTITY	TOTAL CALIPER INCHES
EXISTING TREES IN DEVELOPMENT AREA	462	5,746
EXISTING TREES TO REMAIN IN DEVELOPMENT AREA	354	4,422
EXISTING TREES TO BE REMOVED IN DEVELOPMENT AREA	(108)	(1,324)
EXISTING TREES TO BE REMOVED AT SW CORNER OF JERRY'S POND	(8)	(87)
PROPOSED NEW TREES	656	1,420
PROPOSED NET NEW TREE COUNT	1,002	5,755
DIFFERENCE FROM EXISTING	+540	+9

- TREE PROTECTION FENCE
- - - DEVELOPMENT BOUNDARY



36-64 WHITTEMORE AVE.
 TREE PROTECTION PLAN DEVELOPMENT AREA

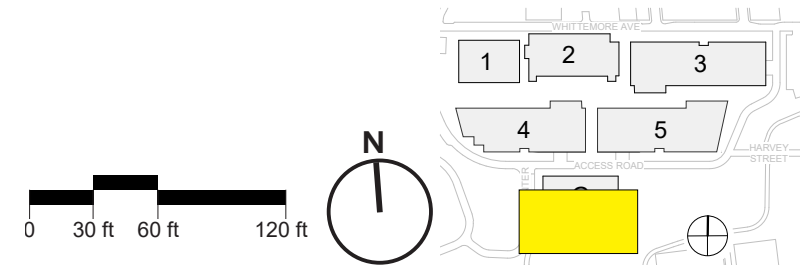


PLANTING SCHEDULE

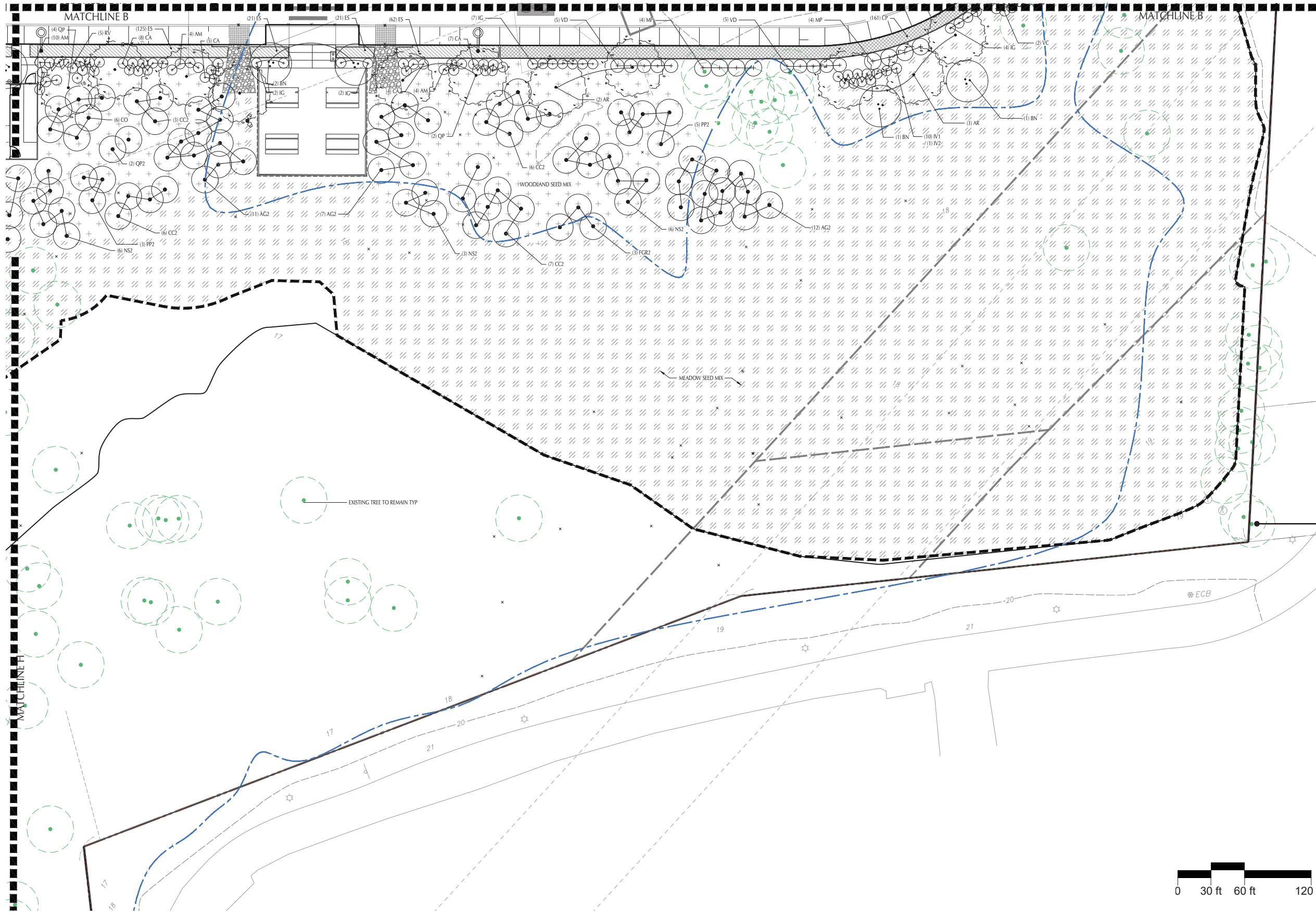
SYM	QTY	BOTANICAL NAME	COMMON NAME	SIZE	COMMENTS
DECIDUOUS SHADE TREES (257 TOTAL)					
AF	17	<i>Acer x freemanii</i> 'Autumn Blaze'	Autumn Blaze Freeman Maple	4' - 4 1/2' CAL.	7' LOWEST BRANCH, SPRING PLANT
AR	9	<i>Acer rubrum</i> 'October Glory'	October Glory Red Maple (oval)	3' - 3 1/2' CAL.	7' LOWEST BRANCH, SPRING PLANT
AR1	36	<i>Acer rubrum</i> 'Armstrong'	Armstrong Red Maple (upright)	3' - 3 1/2' CAL.	7' LOWEST BRANCH, SPRING PLANT
AR2	11	<i>Acer rubrum</i> 'Armstrong'	Armstrong Red Maple (upright)	1' - 1 1/2' CAL.	
CO	6	<i>Carya ovata</i>	Shagbark Hickory	1' - 1 1/2' CAL.	
FGR	3	<i>Fagus grandifolia</i>	American Beech	3' - 3 1/2' CAL.	7' LOWEST BRANCH, SPRING PLANT
FGR2	9	<i>Fagus grandifolia</i>	American Beech	1' - 1 1/2' CAL.	SPRING PLANT
GB	15	<i>Ginkgo biloba</i> 'Princeton Sentry'	Princeton Sentry Maidenhair Tree	3' - 3 1/2' CAL.	7' LOWEST BRANCH
GT	22	<i>Gleditsia triacanthos</i> var. <i>inermis</i> 'Draves'	Street Keeper Honeylocust (upright)	4' - 4 1/2' CAL.	7' LOWEST BRANCH
LST	11	<i>Liquidambar styraciflua</i>	Sweetgum	3' - 3 1/2' CAL.	7' LOWEST BRANCH
NS	6	<i>Nyssa sylvatica</i> 'Wildfire'	Wildfire Tupelo	3' - 3 1/2' CAL.	7' LOWEST BRANCH
NS2	35	<i>Nyssa sylvatica</i> 'Wildfire'	Wildfire Tupelo	1' - 1 1/2' CAL.	
QA	3	<i>Quercus alba</i>	White Oak	3' - 3 1/2' CAL.	
QB	7	<i>Quercus bicolor</i>	Swamp White Oak	3 1/2' - 4' CAL.	7' LOWEST BRANCH
QP	25	<i>Quercus palustris</i>	Pin Oak	3 1/2' - 4' CAL.	7' LOWEST BRANCH
QP2	20	<i>Quercus palustris</i>	Pin Oak	1' - 1 1/2' CAL.	
QR	10	<i>Quercus rubra</i>	Northern Red Oak	3 1/2' - 4' CAL.	7' LOWEST BRANCH
TA	12	<i>Tilia americana</i>	American Linden	3' - 3 1/2' CAL.	7' LOWEST BRANCH
ORNAMENTAL TREES (349 TOTAL)					
AP	2	<i>Acer palmatum</i> 'Pixie'	Pixie Japanese Maple	5'-6' HT.	B & B
AG	30	<i>Amelanchier x grandiflora</i> 'Autumn Brilliance'	Autumn Brilliance Serviceberry	10'-12' HT.	3 TRUNKS MIN. / 5 MAX.
AG2	48	<i>Amelanchier x grandiflora</i> 'Autumn Brilliance'	Autumn Brilliance Serviceberry	1' - 1 1/2' CAL.	
BN	41	<i>Betula nigra</i> 'Heritage'	Heritage River Birch	12'-14' HT.	3 TRUNKS MIN. / 5 MAX. SPRING PLANT
BP	24	<i>Betula pendula</i>	Silver Birch	3' - 3 1/2' CAL.	SINGLE STEM, SPRING PLANT
CC	16	<i>Cercis canadensis</i> 'Tennessee Pink'	Tennessee Pink Eastern Redbud	2' - 2 1/2' CAL.	SINGLE STEM, SPRING PLANT
CC2	63	<i>Cercis canadensis</i> 'Tennessee Pink'	Tennessee Pink Eastern Redbud	1' - 1 1/2' CAL.	SINGLE STEM, SPRING PLANT
CCA	13	<i>Carpinus caroliniana</i>	American Hornbeam	2 1/2' - 3' CAL.	SINGLE STEM, SPRING PLANT
CF	19	<i>Cornus florida</i>	Flowering Dogwood	2' - 2 1/2' CAL.	SINGLE STEM, SPRING PLANT
CFR	9	<i>Cornus florida</i> var. <i>rubra</i>	Flowering Red Dogwood	2' - 2 1/2' CAL.	SINGLE STEM, SPRING PLANT
PP2	66	<i>Prunus pensylvanica</i>	Pin Cherry	1' - 1 1/2' CAL.	SINGLE STEM, SPRING PLANT
PK	2	<i>Prunus serrulata</i> 'Kwanzan'	Kwanzan Flowering Cherry	8' CAL.	7' LOWEST BRANCH, SPRING PLANT
PV1	3	<i>Prunus virginiana</i>	Chokecherry	2' - 2 1/2' CAL.	SINGLE STEM, SPRING PLANT
SR	12	<i>Syringa reticulata</i> 'Ivory Silk'	Ivory Silk Japanese Tree Lilac	2' - 2 1/2' CAL.	SINGLE STEM, UPRIGHT FORM

Existing Trees to Remain

EXISTING TREE TO REMAIN TYP

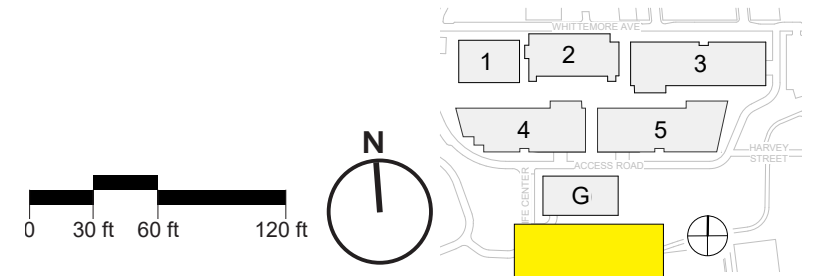
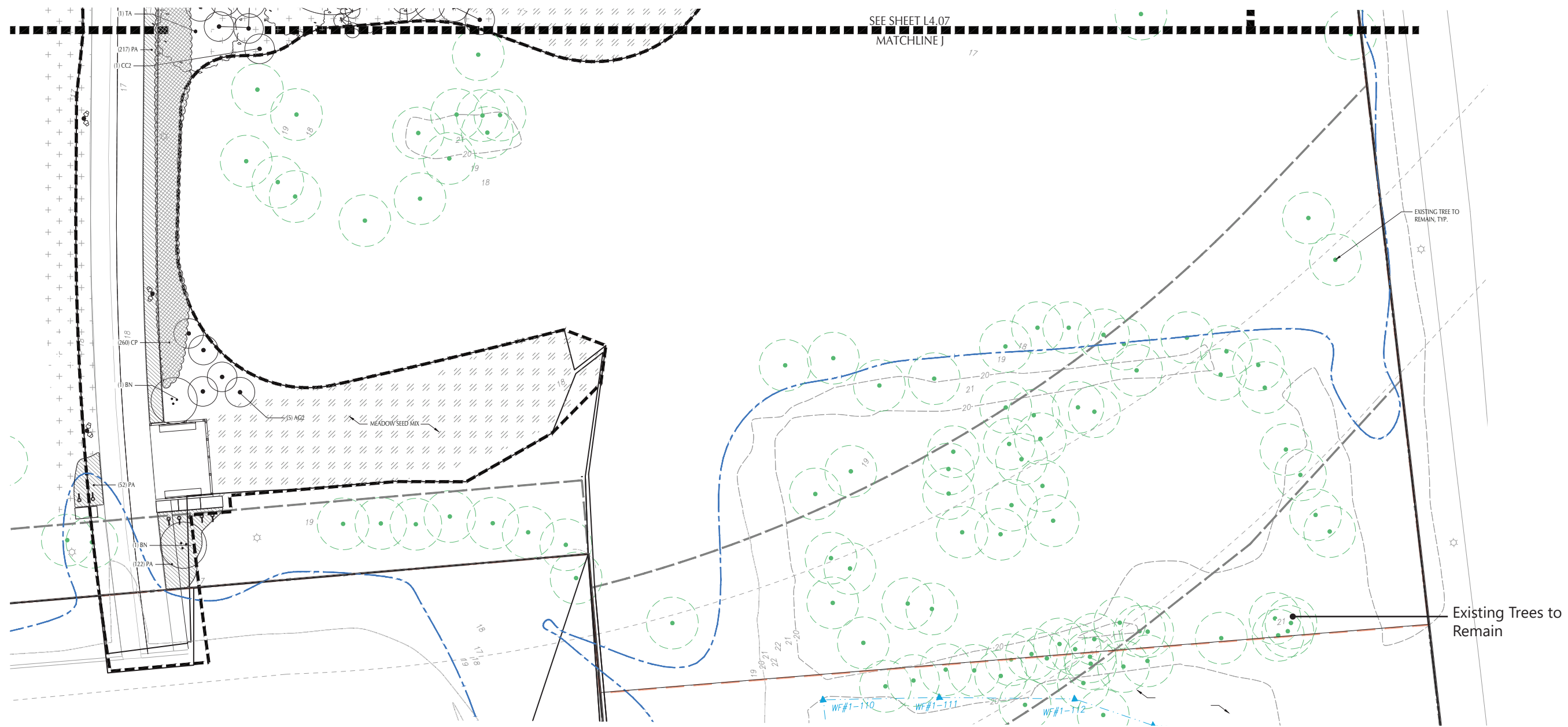


36-64 WHITTEMORE AVE.
NATURAL HABITAT AREA: PROPOSED TREES



36-64 WHITTEMORE AVE.

NATURAL HABITAT AREA: PROPOSED TREES



36-64 WHITTEMORE AVE.

NATURAL HABITAT AREA: PROPOSED TREES