

SEAL

CONSULTANT

PROJECT

PROPOSED NEW  
TENANT ENTRY &  
2ND FLOOR  
BALCONY  
57 JFK STREET  
CAMBRIDGE, MA

PREPARED FOR

CRIMSON GALERIA, LP

166 BEACON ST  
BROOKLINE, MA 02446

DRAWING TITLE

TITLE SHEET

SCALE AS NOTED

REVISION	DATE
PB APPLIC	REV 9/26/23
PB APPLIC	REV 8/29/23
DRAWN BY LD	REVIEWED BY PQ

SHEET

**A1**

# 57 JFK STREET- CAMBRIDGE, MA

AMENDMENT TO APPROVED PB-390:

PROPOSED NEW ENTRY TO BASEMENT TENANT SPACE ON JFK STREET  
 PROPOSED EXTERIOR BALCONY AT SECOND FLOOR ON JFK STREET

8/11/23

REVISED 8/29/23

REVISION TWO 9/26/23

# PROPOSED RETAIL ENTRANCE CANOPY REMOVAL

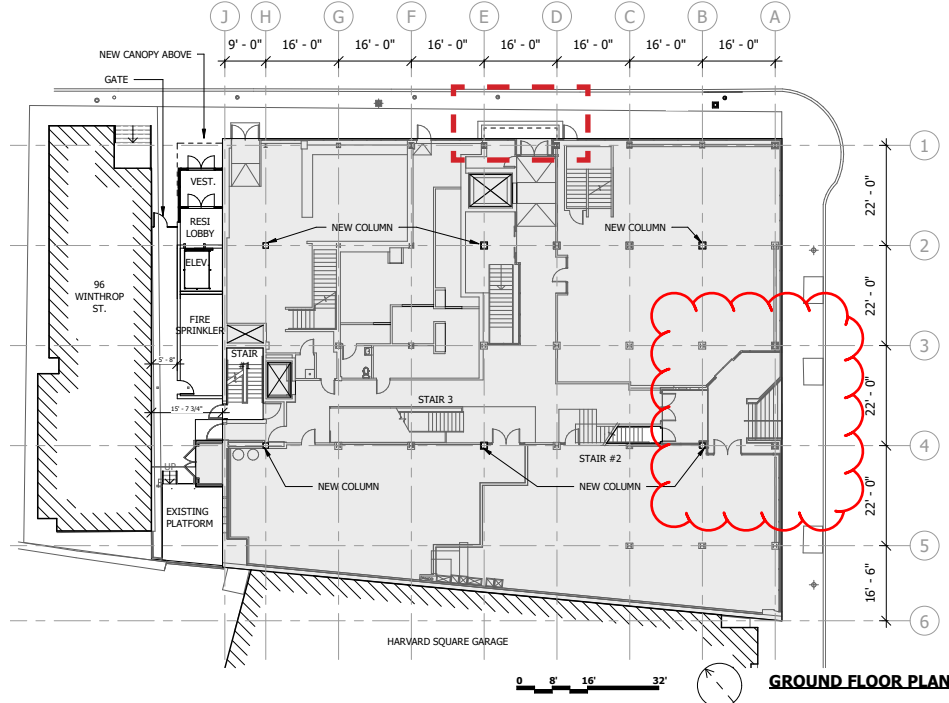


FIGURE 1

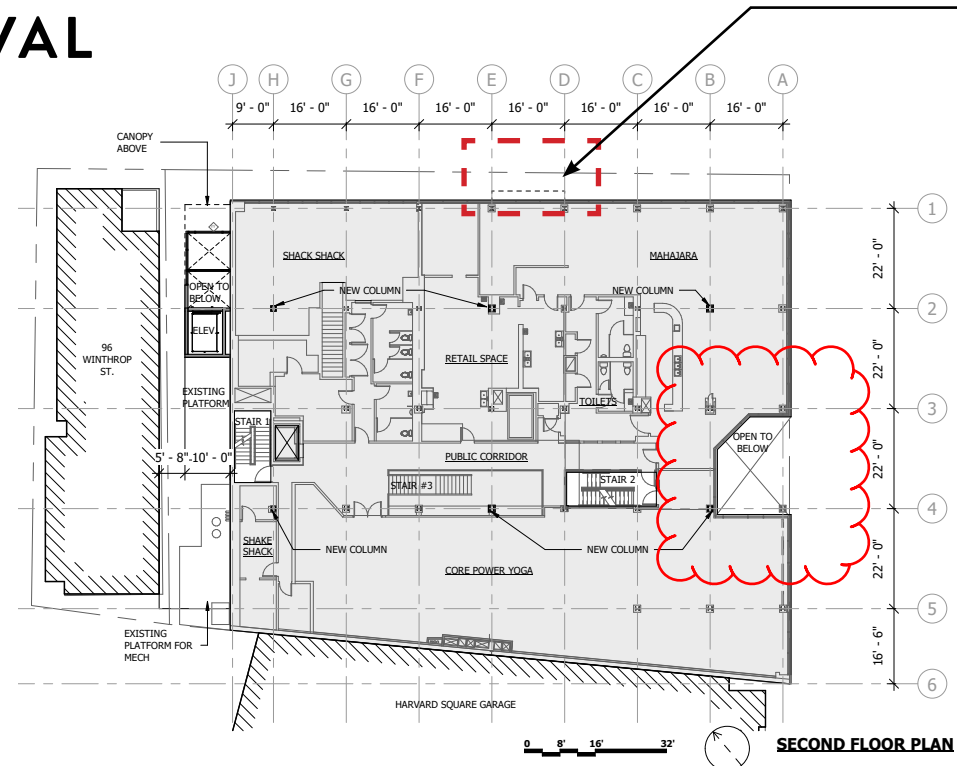


FIGURE 2

PB APPROVED PLANS

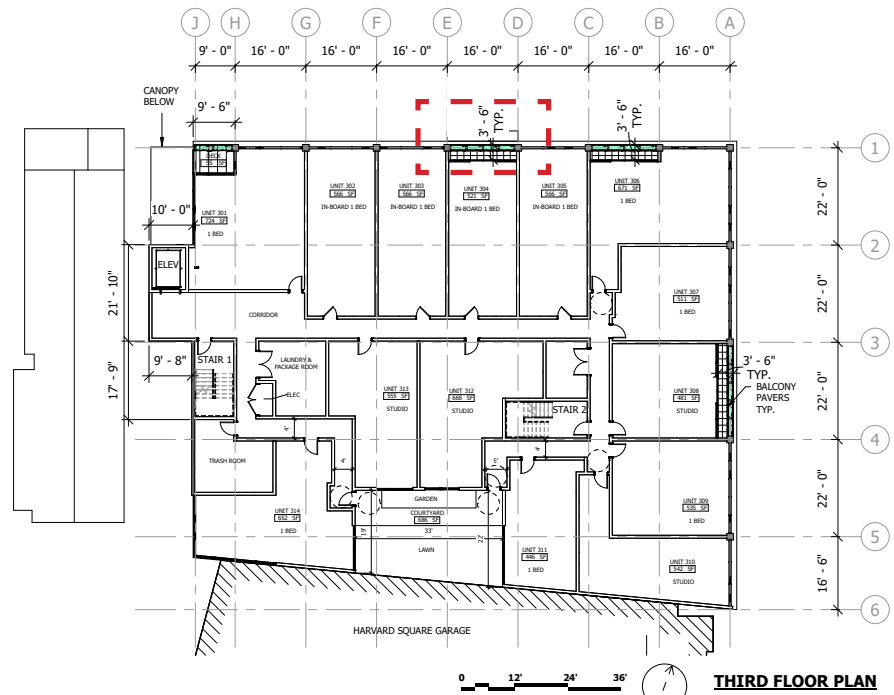


FIGURE 3

FLOOR AREA NET.		
Name	Type	Area
UNIT 301	1 BED	724
UNIT 302	IN-BOARD 1 BED	566
UNIT 303	IN-BOARD 1 BED	566
UNIT 304	IN-BOARD 1 BED	521
UNIT 305	IN-BOARD 1 BED	566
UNIT 306	1 BED	671
UNIT 307	1 BED	511
UNIT 308	STUDIO	481
UNIT 309	1 BED	535
UNIT 310	STUDIO	542
UNIT 311	1 BED	446
UNIT 312	STUDIO	668
UNIT 313	STUDIO	555
UNIT 314	1 BED	652
UNIT 401	1 BED	855
UNIT 402	IN-BOARD 1 BED	537
UNIT 403	IN-BOARD 1 BED	581
UNIT 404	IN-BOARD 1 BED	520
UNIT 405	STUDIO	475
UNIT 406	1 BED	728
UNIT 407	STUDIO	413
UNIT 408	STUDIO	362
UNIT 409	STUDIO	458
UNIT 410	1 BED	431
UNIT 411	1 BED	629
UNIT 412	STUDIO	520
UNIT 413	2 BED	1,047
UNIT 501	1 BED	724
UNIT 502	STUDIO	520
UNIT 503	STUDIO	475
UNIT 504	STUDIO	398
UNIT 505	1 BED	702
UNIT 506	STUDIO	435
UNIT 507	1 BED	580
UNIT 508	1 BED	505
UNIT 509	1 BED	629
UNIT 510	STUDIO	520
UNIT 511	2 BED	1,047
Grand total:		22,091

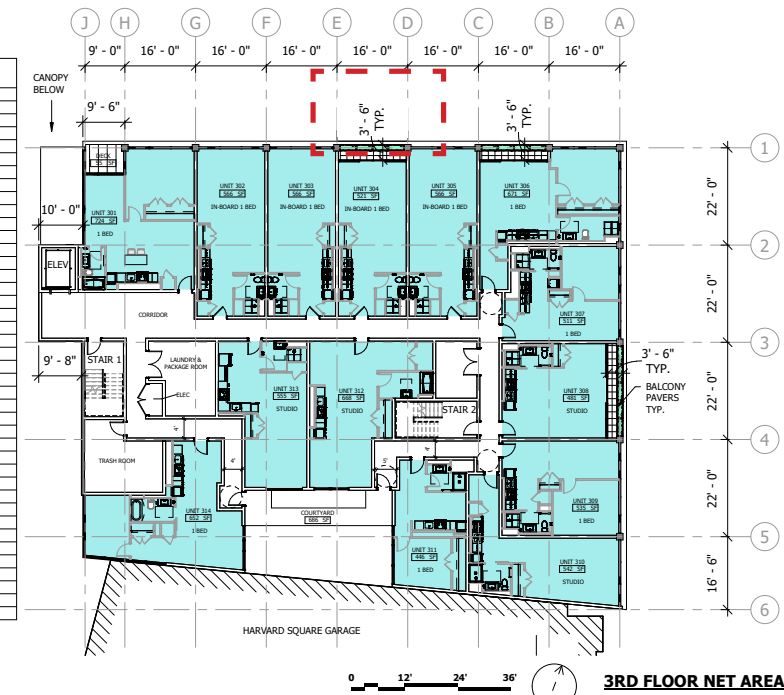
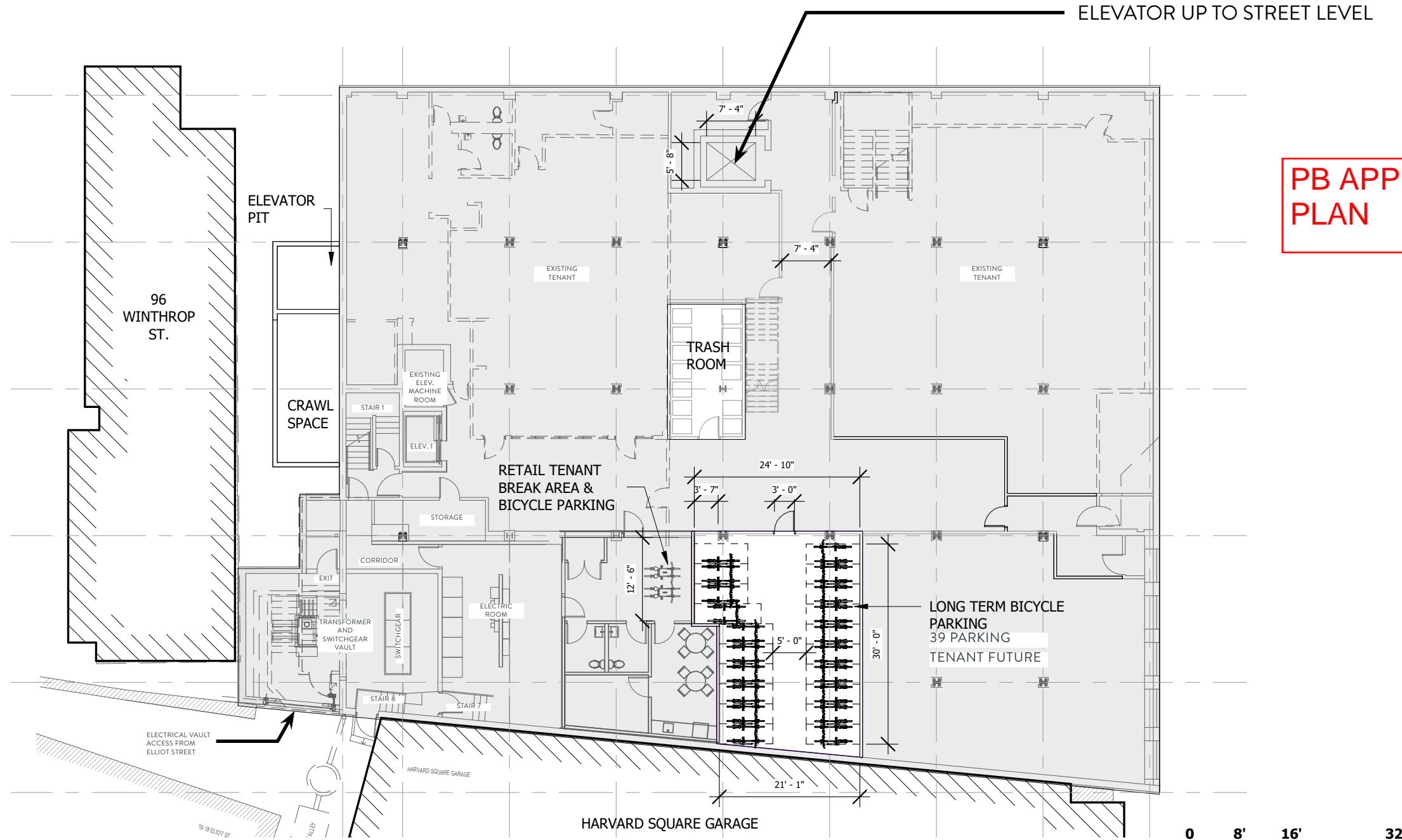
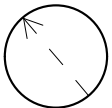
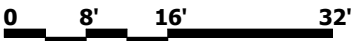


FIGURE 4

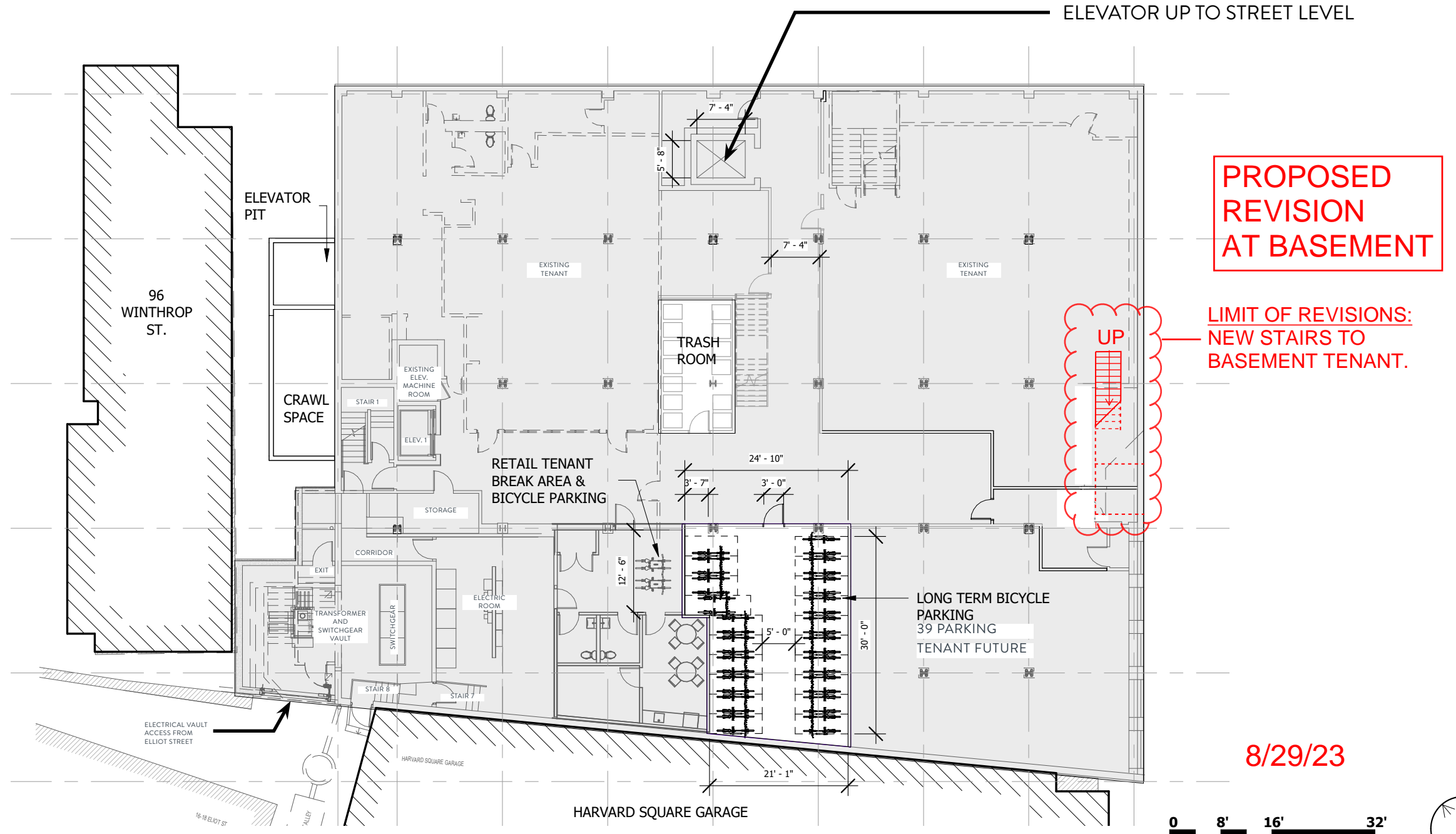
# BASEMENT PLAN



**PB APPROVED PLAN**



# BASEMENT PLAN



AUGUST 26, 2022

15

SEAL

CONSULTANT

PROJECT  
**PROPOSED NEW ENTRY AND SECOND FLOOR INFILL**

57 JFK STREET  
 CAMBRIDGE, MA

PREPARED FOR

CRIMSON GALERIA, LP

166 BEACON ST  
 BROOKLINE, MA 02446

DRAWING TITLE

**FIRST FLOOR PLAN**

SCALE AS NOTED

REVISION | DATE

REVISED | 8/22/23

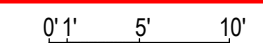
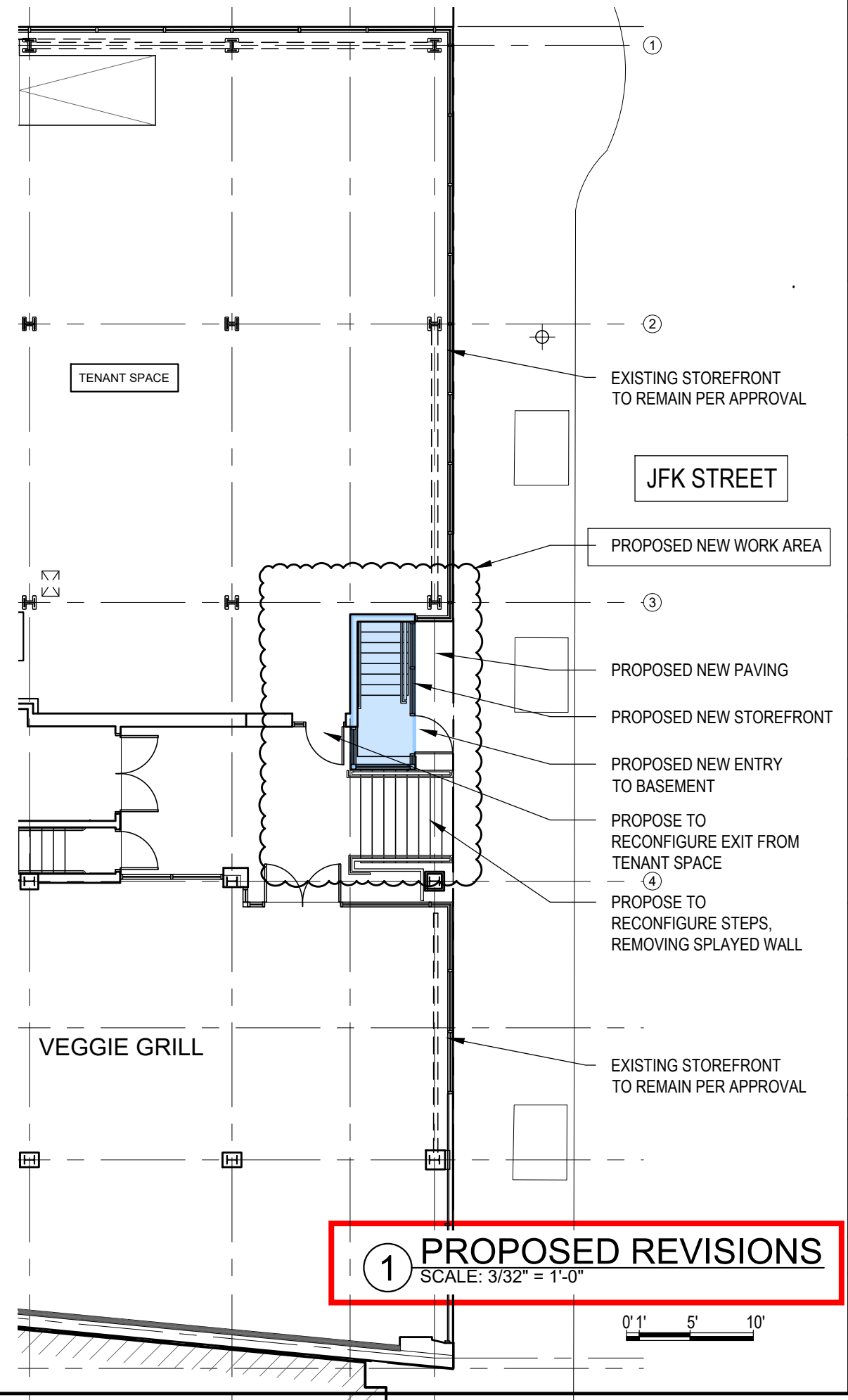
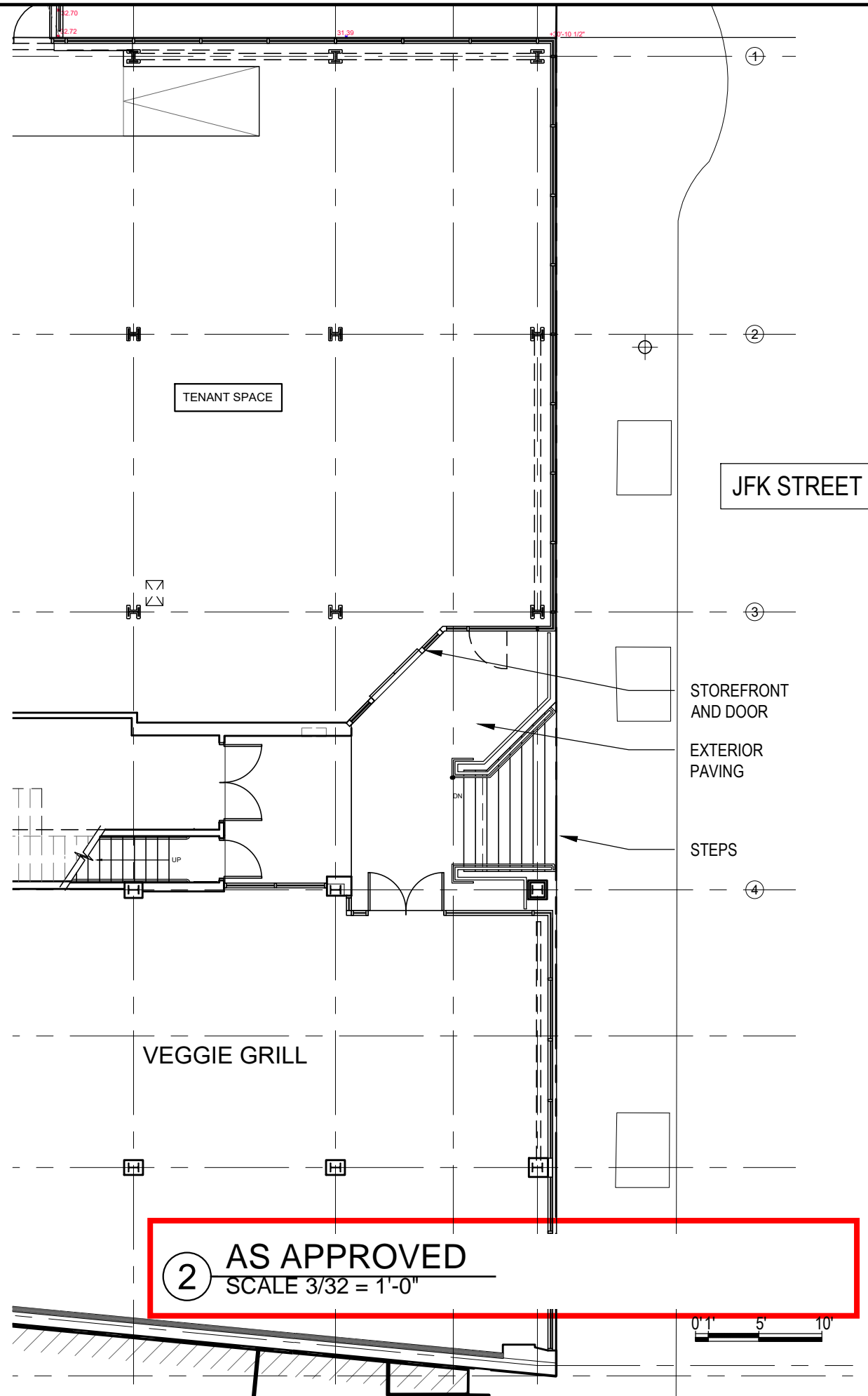
PB APPLIC | 8/11/23

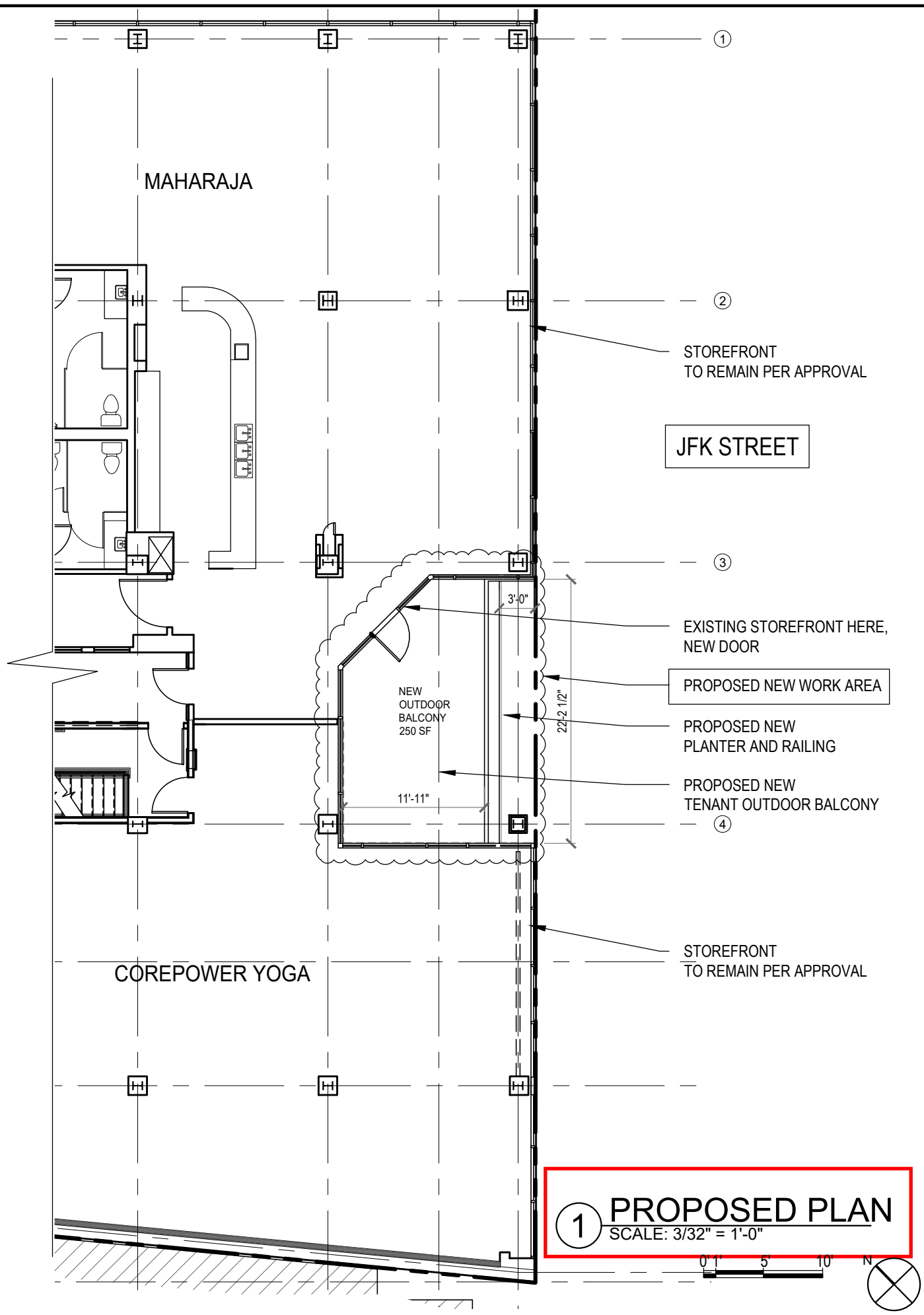
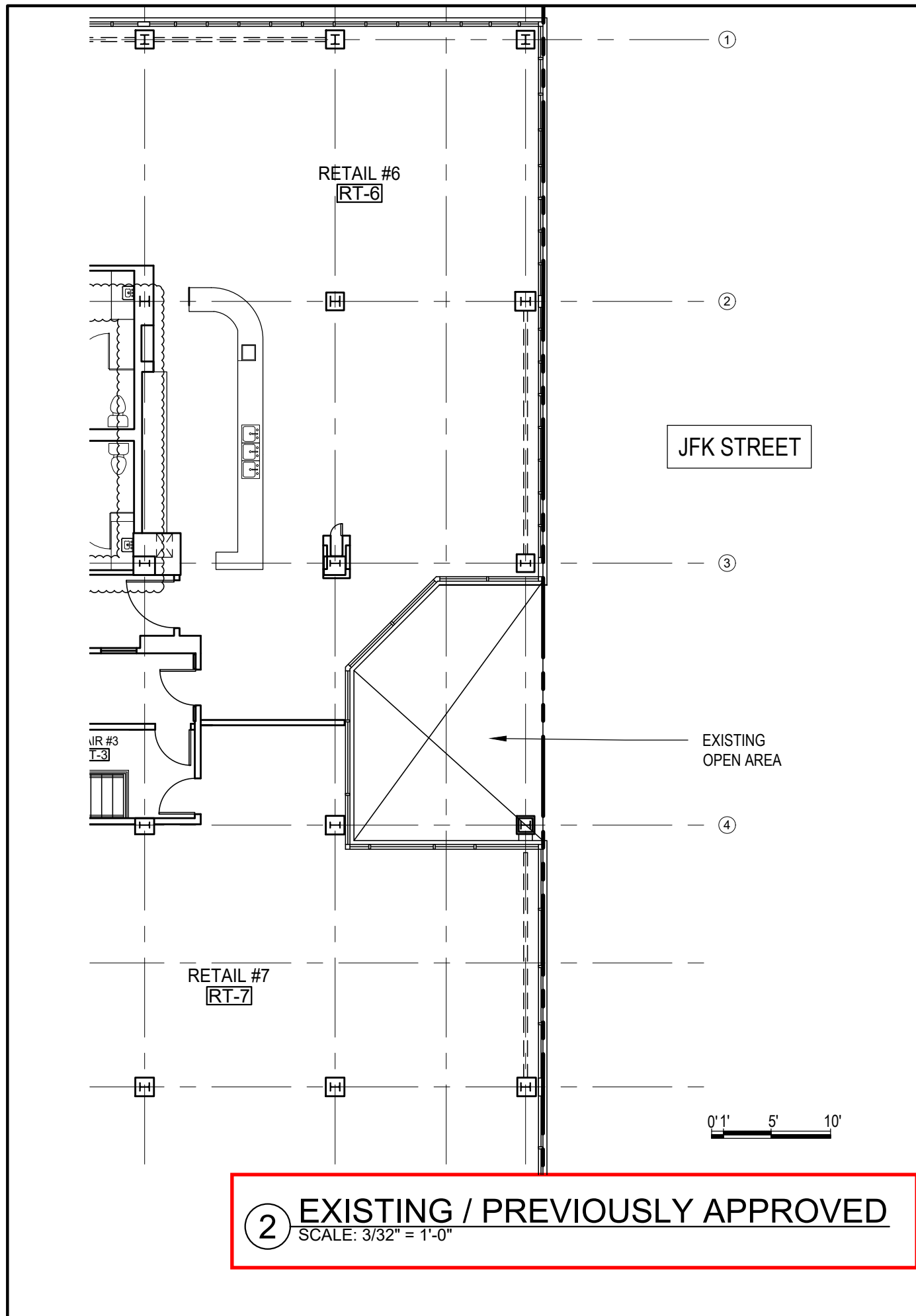
DRAWN BY | REVIEWED BY

LD | PQ

SHEET

**A1**





**2 EXISTING / PREVIOUSLY APPROVED**  
SCALE: 3/32" = 1'-0"

**1 PROPOSED PLAN**  
SCALE: 3/32" = 1'-0"

SEAL

CONSULTANT

PROJECT  
**PROPOSED NEW ENTRY AND SECOND FLOOR INFILL**  
 57 JFK STREET  
 CAMBRIDGE, MA

PREPARED FOR  
**CRIMSON GALERIA, LP**

166 BEACON ST  
 BROOKLINE, MA 02446

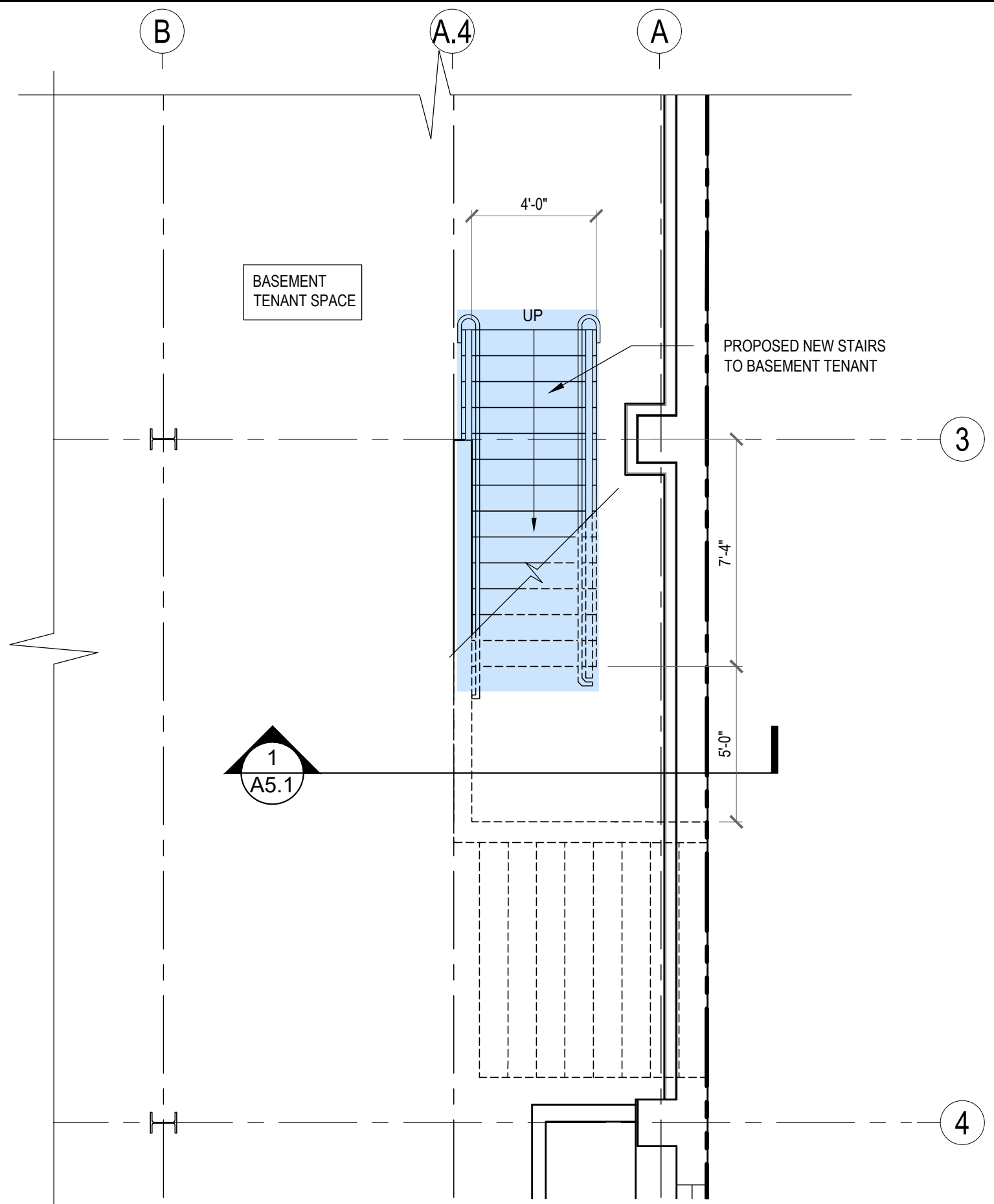
DRAWING TITLE  
**PARTIAL BASEMENT PLAN**

SCALE AS NOTED

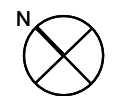
REVISION	DATE
REVISED	8/29/23
PB APPLIC	8/11/23
DRAWN BY LD	REVIEWED BY PQ

SHEET

**A0**



**1 PARTIAL BASEMENT PLAN -PROPOSED**  
 SCALE: 1/4" = 1'-0"



SEAL

CONSULTANT

PROJECT  
PROPOSED NEW  
TENANT ENTRY &  
2ND FLOOR  
BALCONY

57 JFK STREET  
CAMBRIDGE, MA

PREPARED FOR  
CRIMSON GALERIA, LP

166 BEACON ST  
BROOKLINE, MA 02446

DRAWING TITLE

ENLARGED  
PROPOSED  
PLANS

SCALE AS NOTED

REVISION DATE

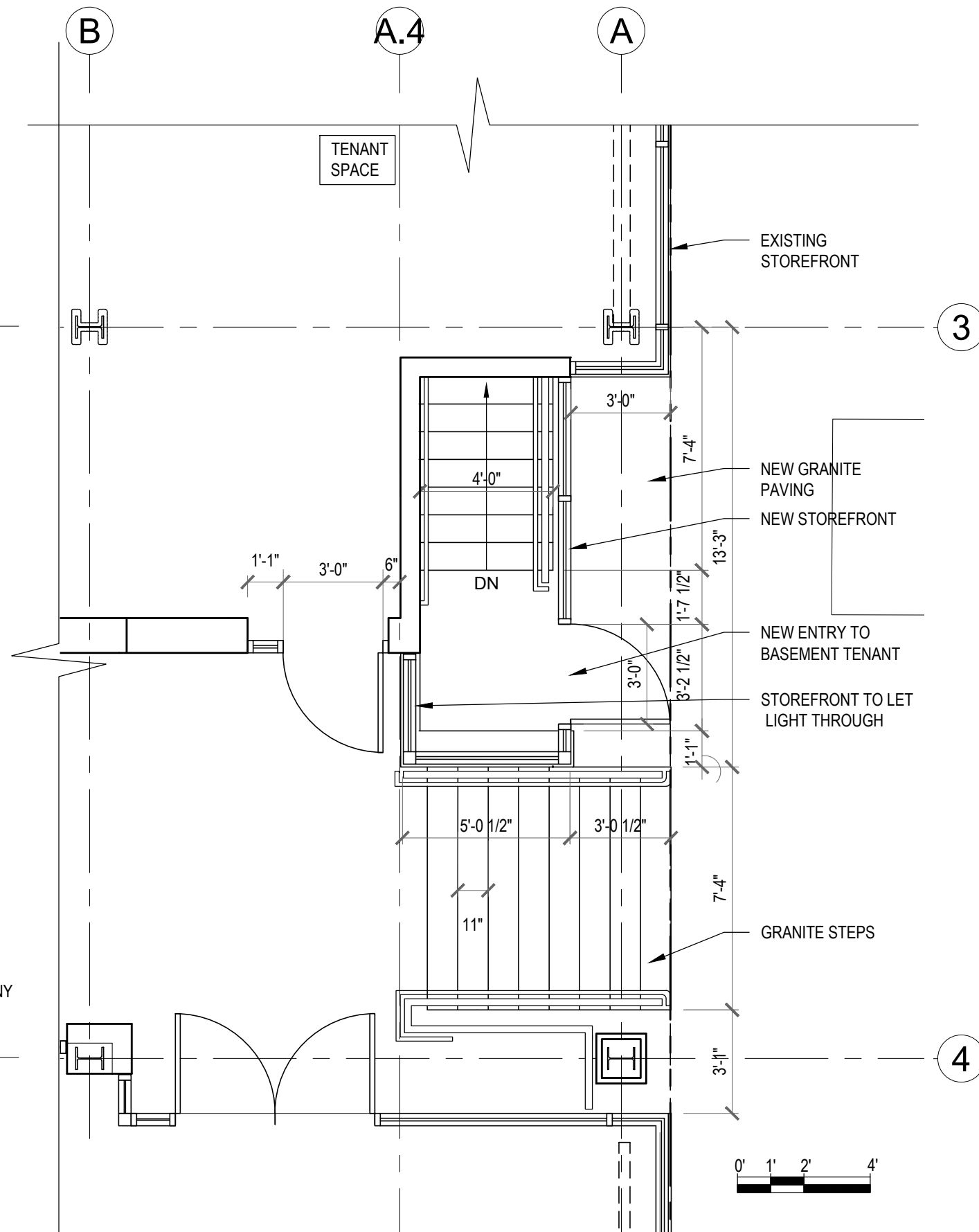
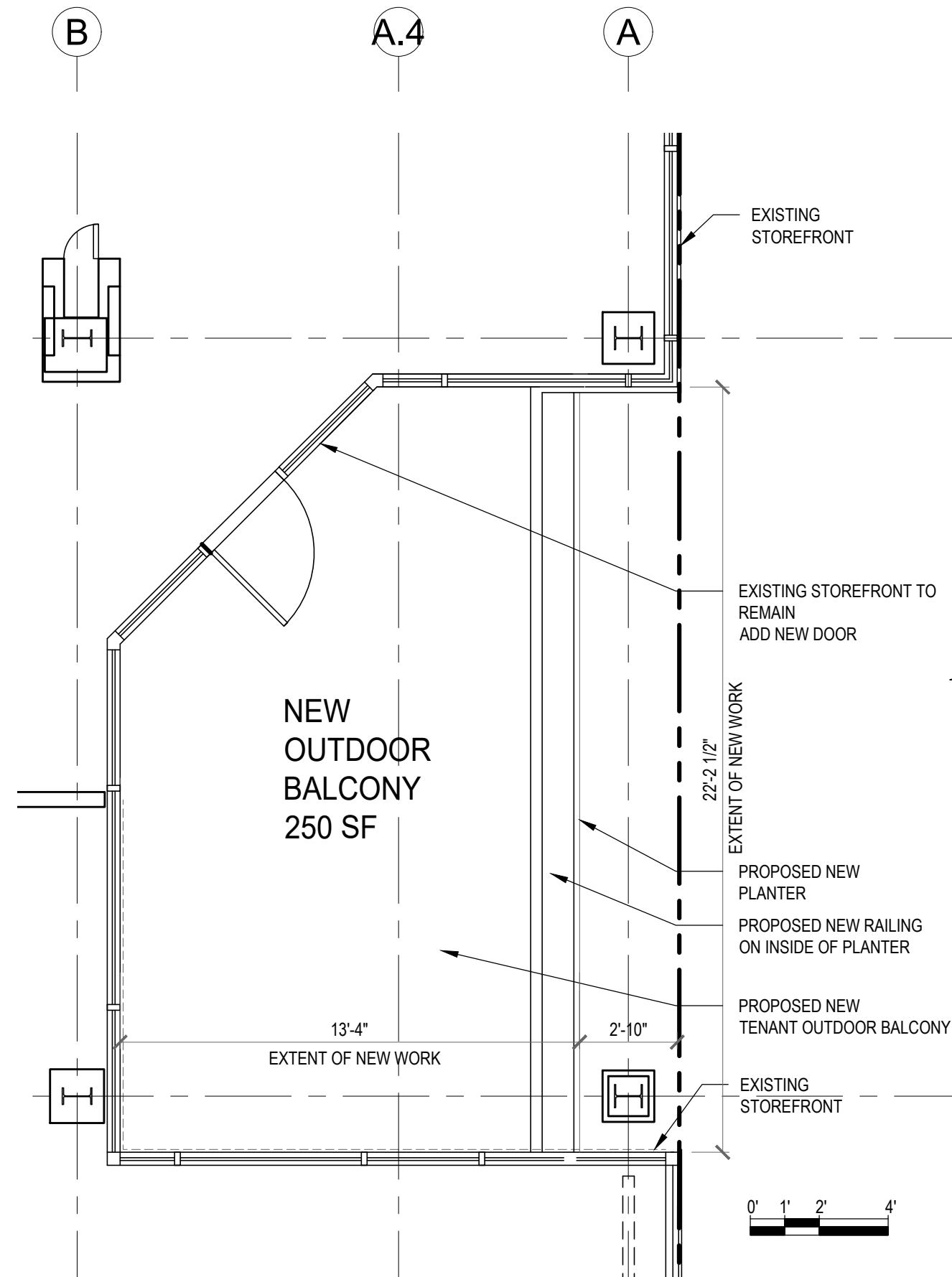
PB APPLIC REV 9/26/23

PB APPLIC REV 8/29/23

DRAWN BY LD REVIEWED BY PQ

SHEET

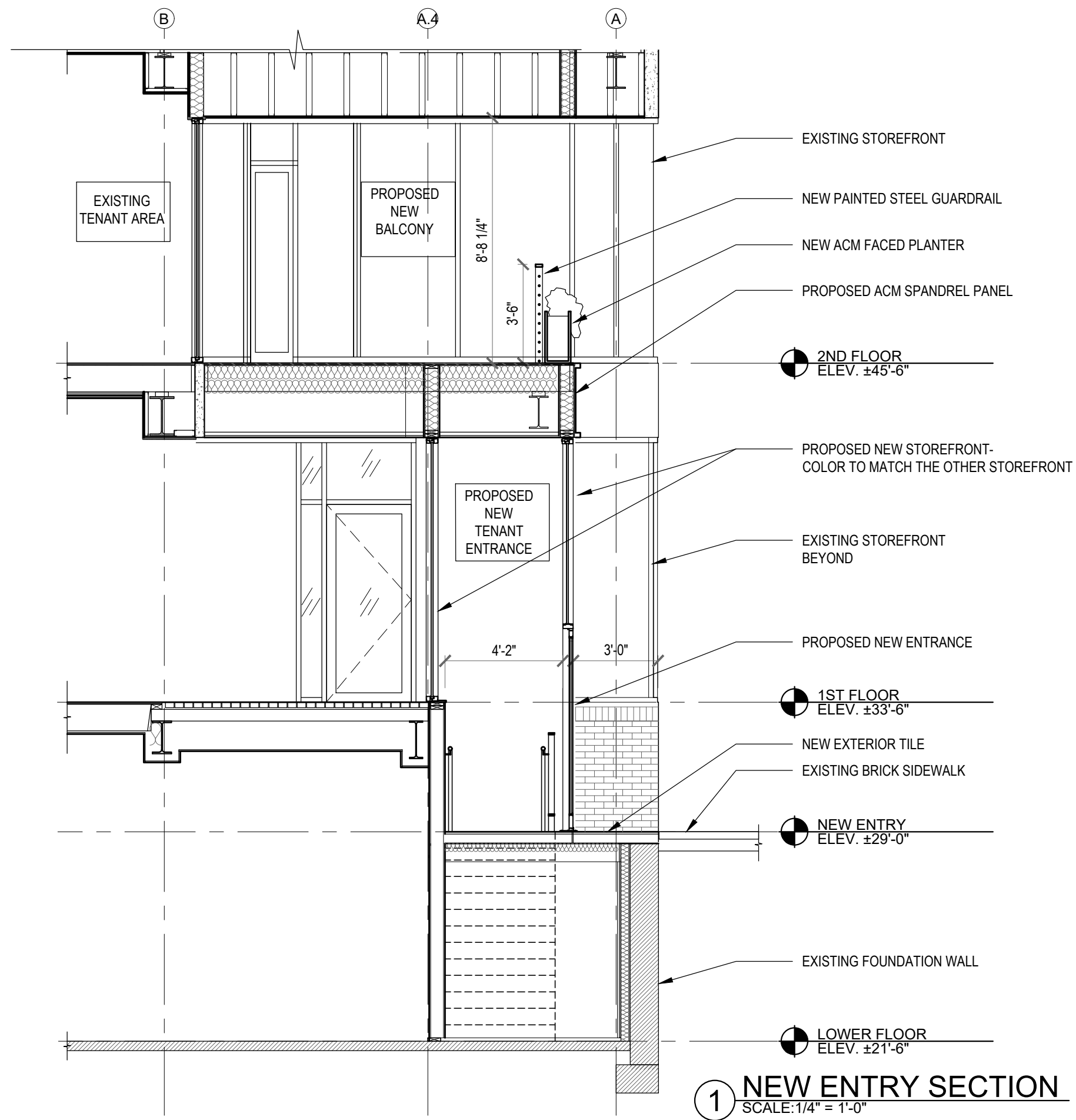
**A2.1**



**2 SECOND FLOOR ENLARGED PLAN**  
SCALE: 1/4" = 1'-0"

**1 FIRST FLOOR ENLARGED PLAN**  
SCALE: 1/4" = 1'-0"







EXTERIOR BALCONY AT SECOND FLOOR  
DARK BRONZE COLORED ACM SPANDRELS AND COLUMN ENCLOSURE  
MOSAIC PANEL ON REAR WALL OF NEW ENTRY TO BASEMENT TENANT



PROJECTING SIGN ON DARK BRONZE CLAD COLUMN  
LED LIT LETTERS AT NIGHT

# WHITE ROOF

HIGH ALBEDO ROOFING MEMBRANE



AS APPROVED



BIRDSEYE VIEW FROM JFK STREET

# FACADE DETAIL

AS APPROVED



WINTHROP ST ENTRANCE



ALUMINUM PROFILE

PANEL JOINTS

# WOOD SOFFIT & MULLION DETAIL

**AS APPROVED**

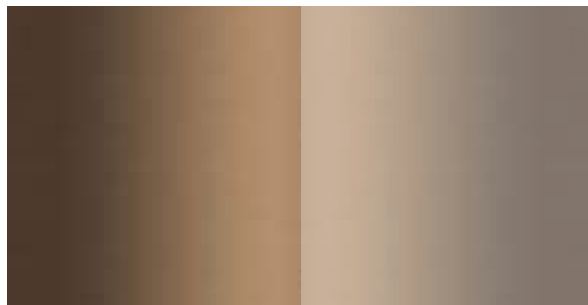
“STURDISTRICT”  
ROOFTOP SCREEN FRAMING  
& HORIZONTAL “SITE PROOF”  
ALUMINUM, LOUVER HORIZONTAL.  
BY ARCHITECTURAL  
LOUVERS INC.  
COLOR “A”



ALUMINUM FACED BALCONY  
PLANTER BOX, COLOR “B”



ALUCOBOND - ALUMINUM  
COMPOSITE PANEL  
1/8” RAINSCREEN SYSTEM  
COLOR “A” TYPICAL  
COLOR “B” AT ENTRY PORTAL



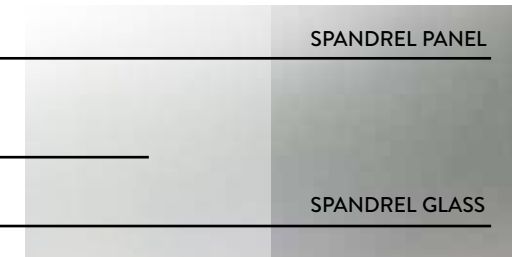
JET MIST GRANITE BASE “A”



MFR: KNOTWOOD WOOD TONE  
ALUMINUM SOFFIT PANEL  
SYSTEM



ALUMINUM WINDOW SYSTEM  
COLOR “C” LIGHT ANODIZED  
BRONZE



EXTERIOR LITE: 6MM HS CLEAR  
SOLARBAN 70 (2) VISION GLASS  
W/ LOW-E COATING SURFACE #2  
  
6MM FT CLEAR VISION GLASS  
W/ OPACIFIER ON SURFACE #3



ALUMINUM STOREFRONT  
COLOR “B” DARK ANODIZED  
BRONZE INTEGRATED WITH  
EXISTING SYSTEM BY GLASS  
INSTALLER

**COLOR OF NEW STOREFRONT AND PANELS AT  
NEW RECESSED ENTRY**



BUILDING SIGNAGE - PIN  
ALUMINUM FACE MOUNT OVER  
ARCYLIC LED BACKING