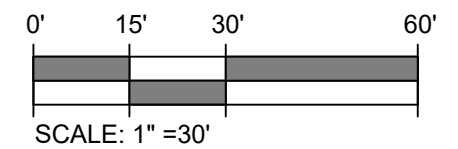
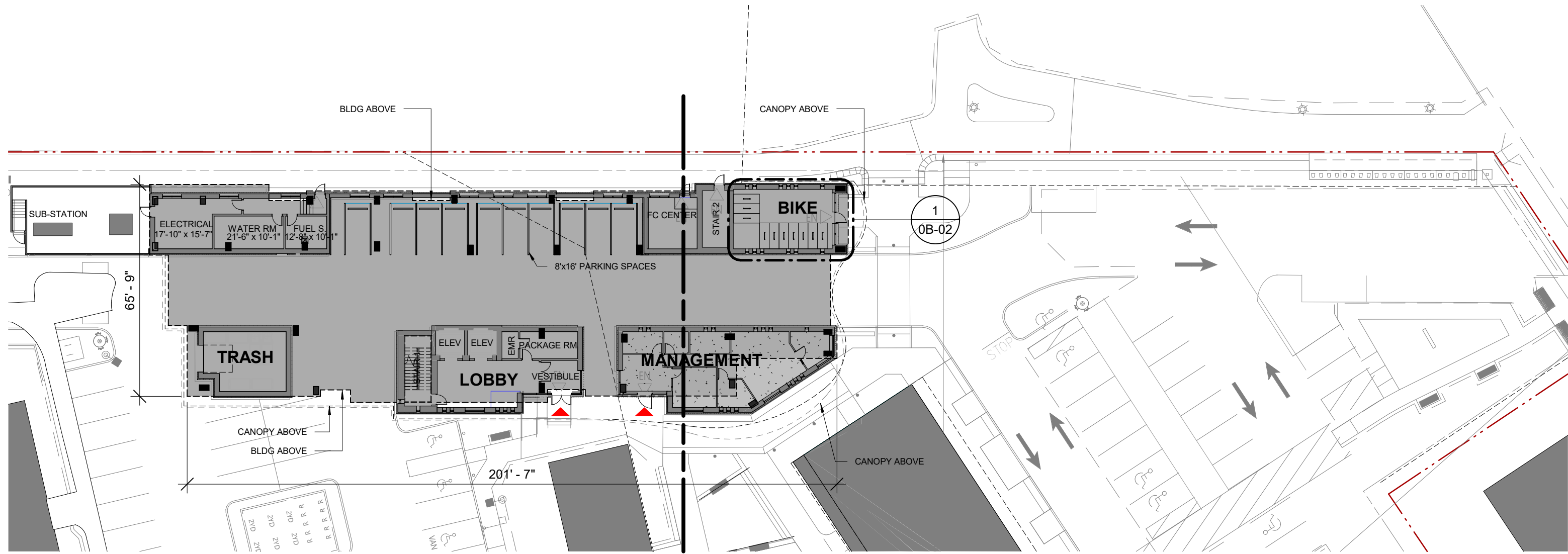


06 Floor Plans BUILDING A GROUND FLOOR PLAN



06 Floor Plans BUILDING A TYPICAL FLOOR PLAN



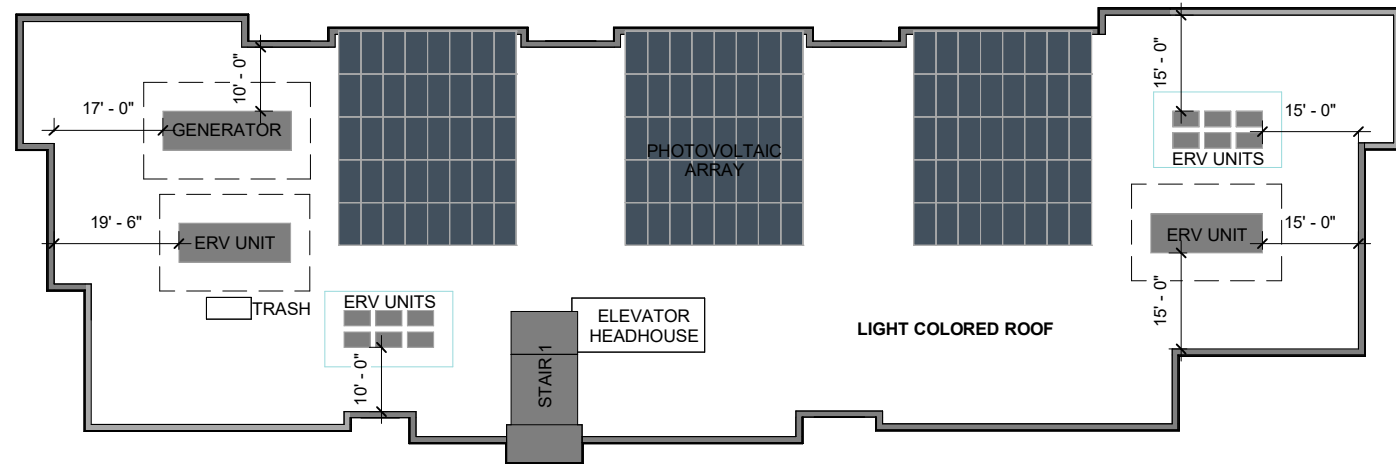
3RD FLOOR

2ND FLOOR

TOTAL UNIT COUNT FOR BOTH BUILDINGS 'A' & 'B'

LEVEL	STUDIOS	1 BED	2 BEDS	3 BEDS	4 BEDS	TOTAL P/FLOOR
2	0	6	6	4	1	17
3	0	6	6	4	1	17
4	0	6	6	4	1	17
5	0	6	6	4	1	17
6	0	6	6	4	1	17
7	0	3	3	3	1	10
UNIT RATIOS	33 (35%)		33 (35%)	23 (24%)	6 (6%)	95

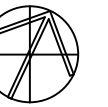
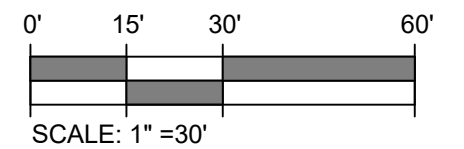
BLDG A				BLDG B			
NUMBER OF UNITS PER FLOOR - 10 UNITS				NUMBER OF UNITS PER FLOOR - 7 UNITS			
BREAKDOWN:				BREAKDOWN:			
STUDIO	0	x6	= 0	STUDIO	0	x5	= 0
1-BED	3	x6	= 18	1-BED	3	x5	= 15
2-BED	3	x6	= 18	2-BED	3	x5	= 15
3-BED	3	x6	= 18	3-BED	1	x5	= 5
4-BED	1	x6	= 6	4-BED	0	x5	= 0
10 UNITS X 6 STORIES = 60 UNITS				7 UNITS X 5 STORIES = 35 UNITS			



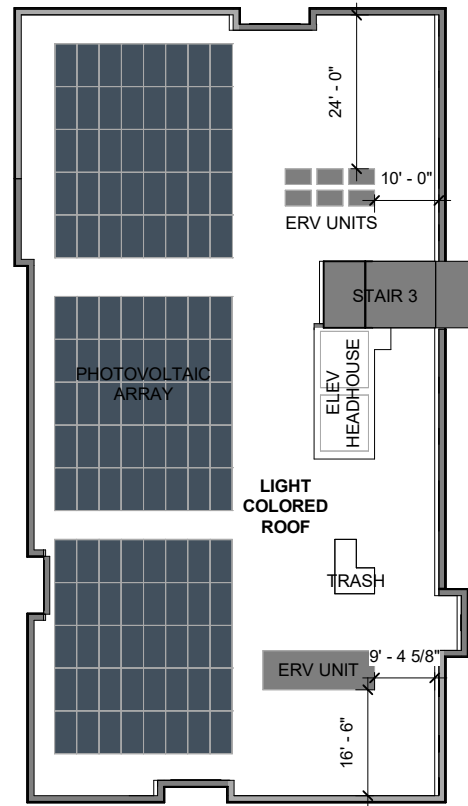
ROOF PLAN



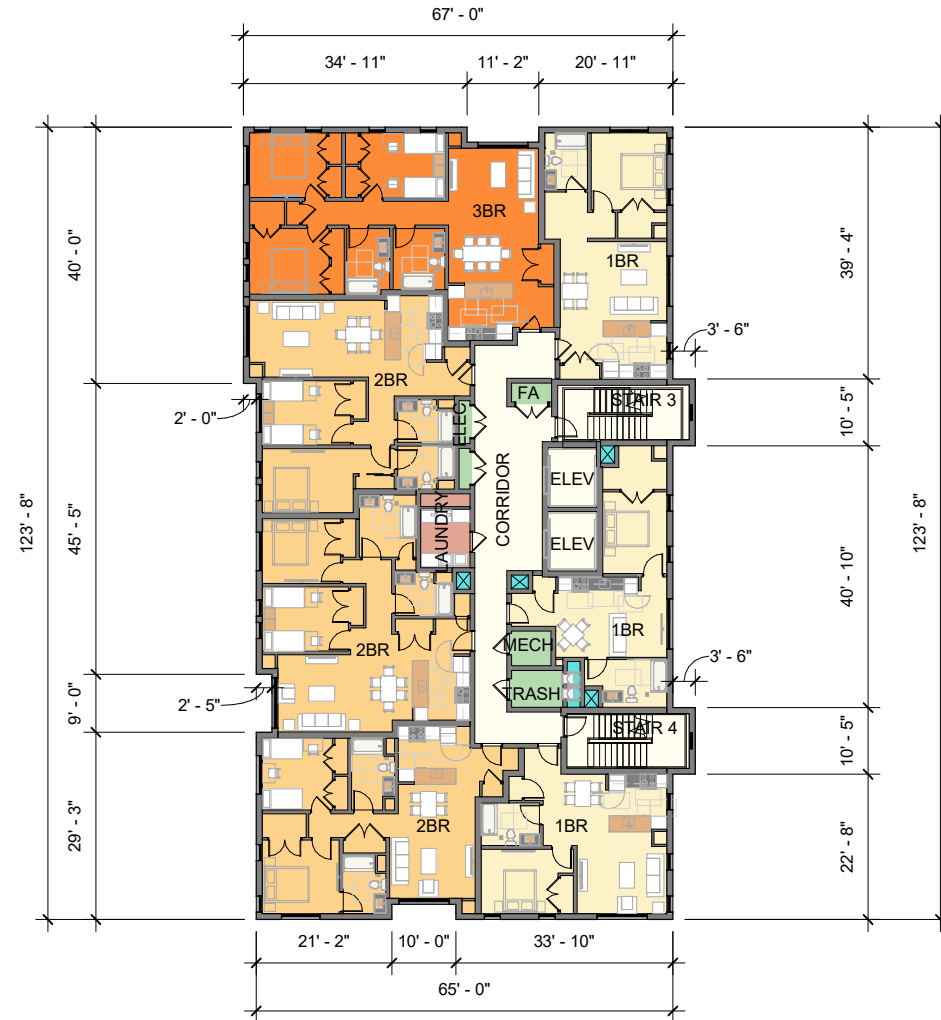
7TH FLOOR



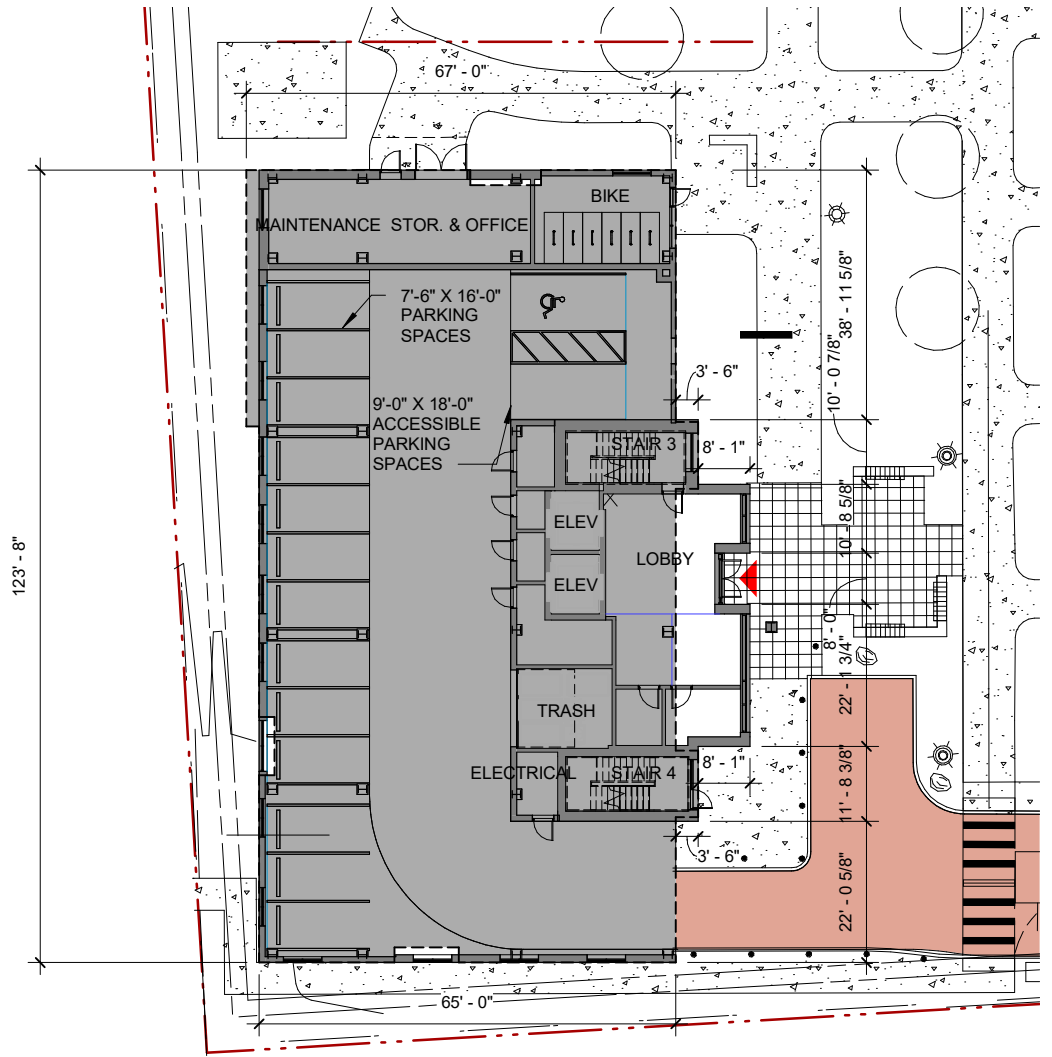
06 Floor Plans BUILDING B GROUND FLOOR , 2ND FLOOR AND ROOF PLAN



ROOF PLAN



2ND FLOOR

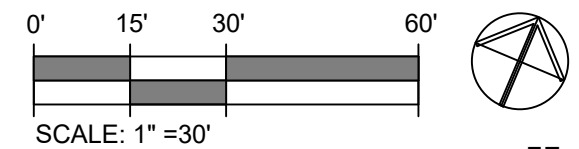


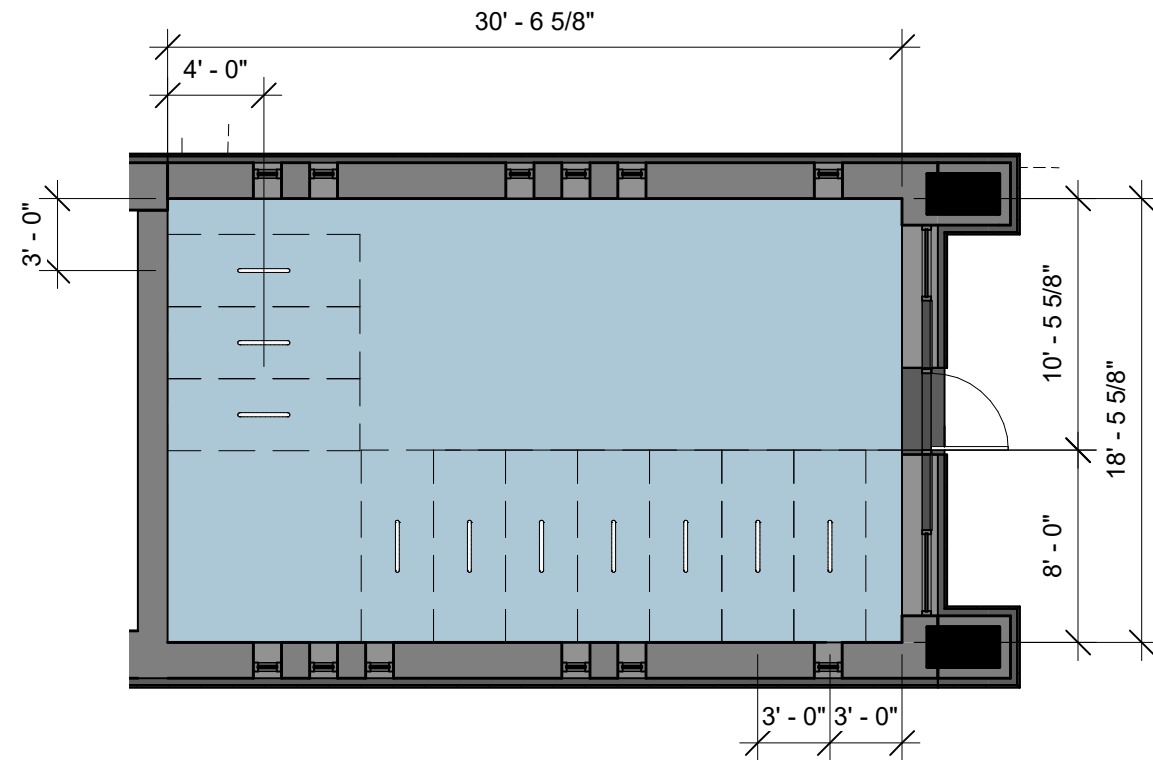
GROUND FLOOR

TOTAL UNIT COUNT FOR BOTH BUILDINGS 'A' & 'B'

LEVEL	STUDIOS	1 BED	2 BEDS	3 BEDS	4 BEDS	TOTAL P/FLOOR
2	0	6	6	4	1	17
3	0	6	6	4	1	17
4	0	6	6	4	1	17
5	0	6	6	4	1	17
6	0	6	6	4	1	17
7	0	3	3	3	1	10
UNIT RATIOS	33 (35%)	33 (35%)	23 (24%)	6 (6%)		95

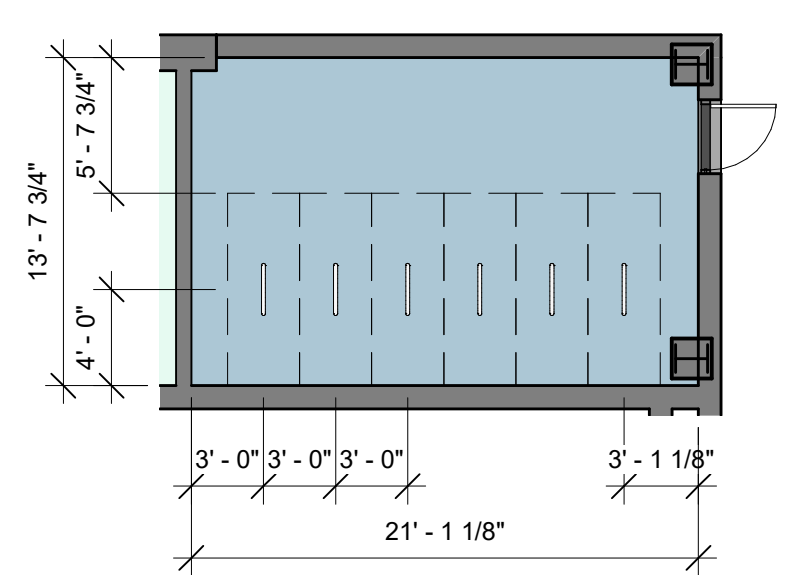
BLDG A				BLDG B			
NUMBER OF UNITS PER FLOOR - 10 UNITS				NUMBER OF UNITS PER FLOOR - 7 UNITS			
BREAKDOWN:				BREAKDOWN:			
STUDIO	0	x6	= 0	STUDIO	0	x5	= 0
1-BED	3	x6	= 18	1-BED	3	x5	= 15
2-BED	3	x6	= 18	2-BED	3	x5	= 15
3-BED	3	x6	= 18	3-BED	1	x5	= 5
4-BED	1	x6	= 6	4-BED	0	x5	= 0
10 UNITS X 6 STORIES = 60 UNITS				7 UNITS X 5 STORIES = 35 UNITS			





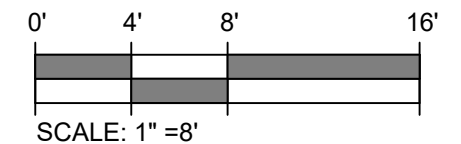
BUILDING A - BIKE ROOM

SCALE: 1/8" = 1'-0"



BUILDING B - BIKE ROOM

SCALE: 1/8" = 1'-0"



07 Elevations & Sections BUILDING A ELEVATIONS

AWNING & FIXED WINDOWS - TYPICAL

VLT (Visible Light Transmittance): 0.58

VLR (Visible Light Reflectance): 0.13

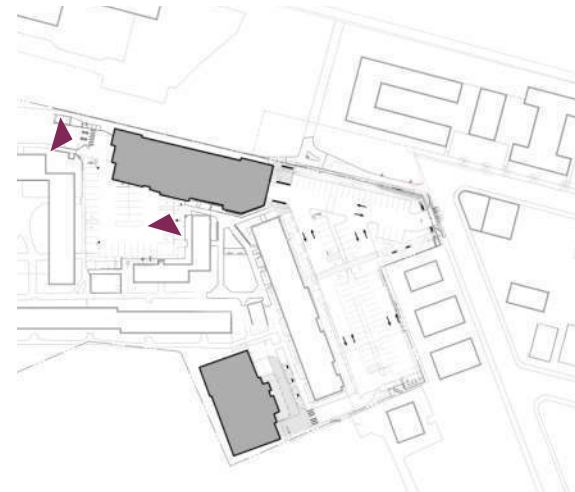
> 20% glazing ratio



SOUTH ELEVATION
SCALE 1:30



MATERIAL PALETTE



WEST ELEVATION
SCALE 1:30

07 Elevations & Sections BUILDING A ELEVATIONS

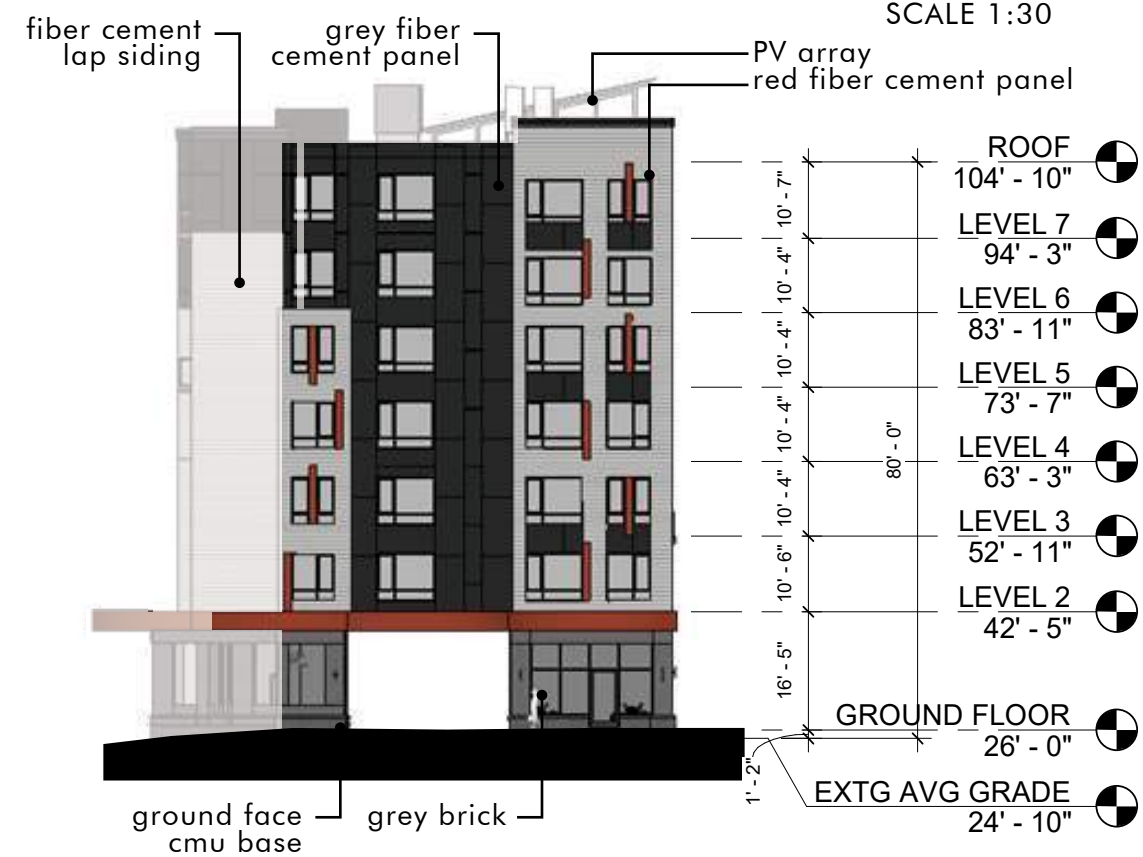
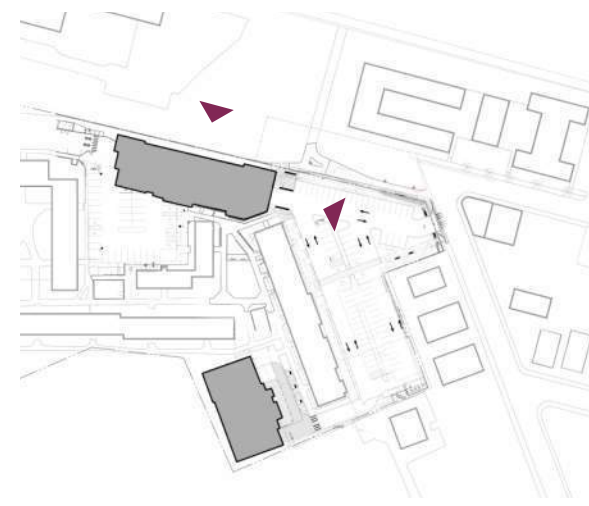
AWNING & FIXED WINDOWS - TYPICAL
 VLT (Visible Light Transmittance): 0.58
 VLR (Visible Light Reflectance): 0.13
 > 20% glazing ratio



NORTH ELEVATION
SCALE 1:30



MATERIAL PALETTE



EAST ELEVATION
SCALE 1:30

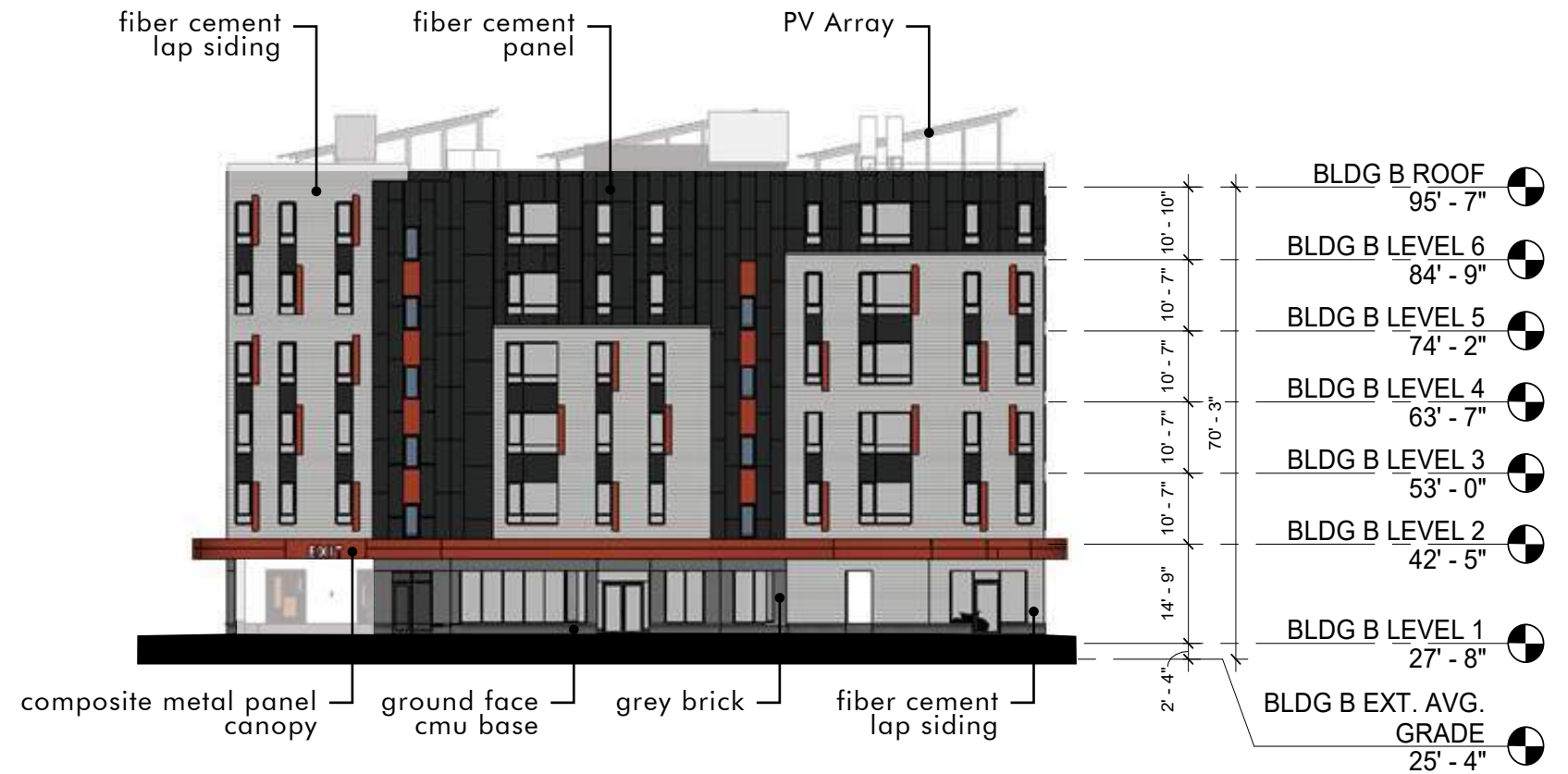
07 Elevations & Sections BUILDING B ELEVATIONS

AWNING & FIXED WINDOWS - TYPICAL

VL (Visible Light Transmittance): 0.58

VLR (Visible Light Reflectance): 0.13

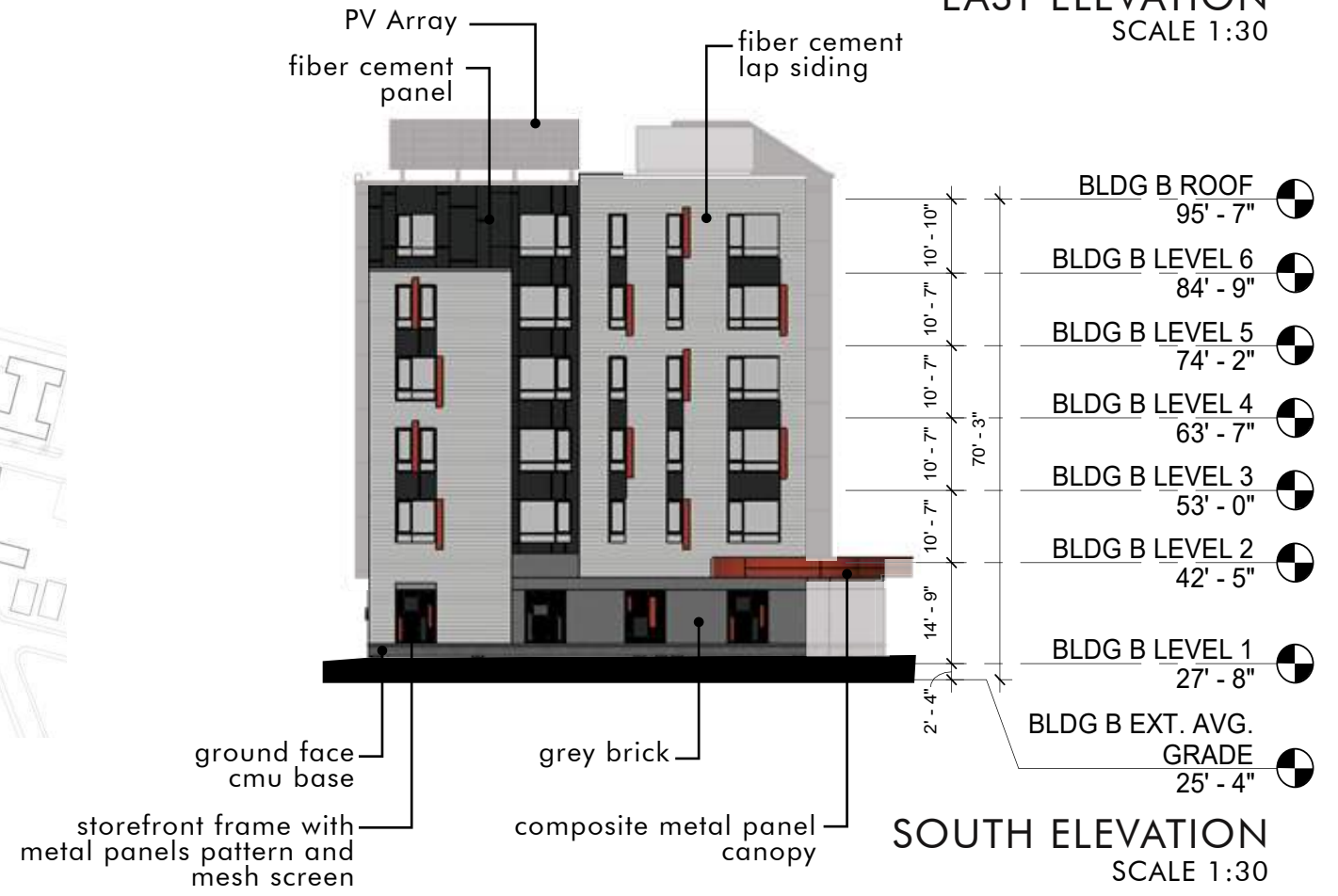
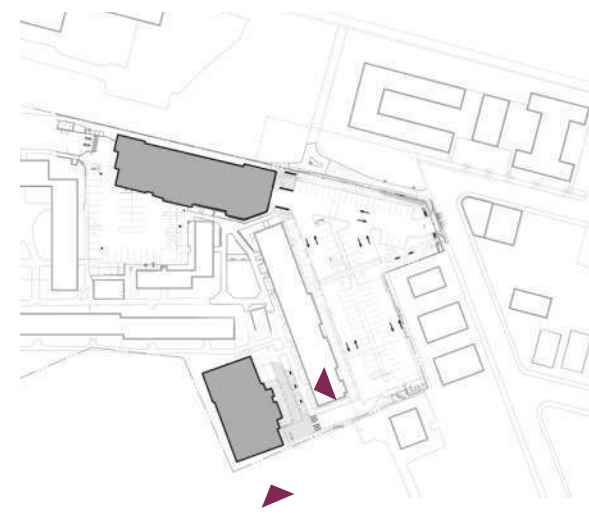
> 20% glazing ratio



EAST ELEVATION
SCALE 1:30



MATERIAL PALETTE



SOUTH ELEVATION
SCALE 1:30

07 Elevations & Sections BUILDING B ELEVATIONS

AWNING & FIXED WINDOWS - TYPICAL

VLT (Visible Light Transmittance): 0.58

VLR (Visible Light Reflectance): 0.13

> 20% glazing ratio



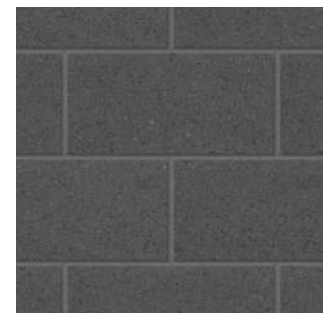
fiber cement lap siding



fiber cement panel



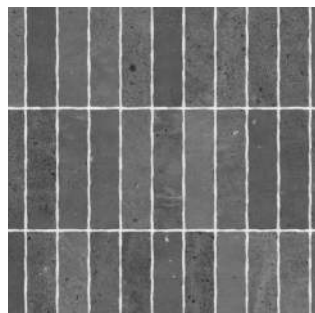
fiber cement panel



ground face cmu

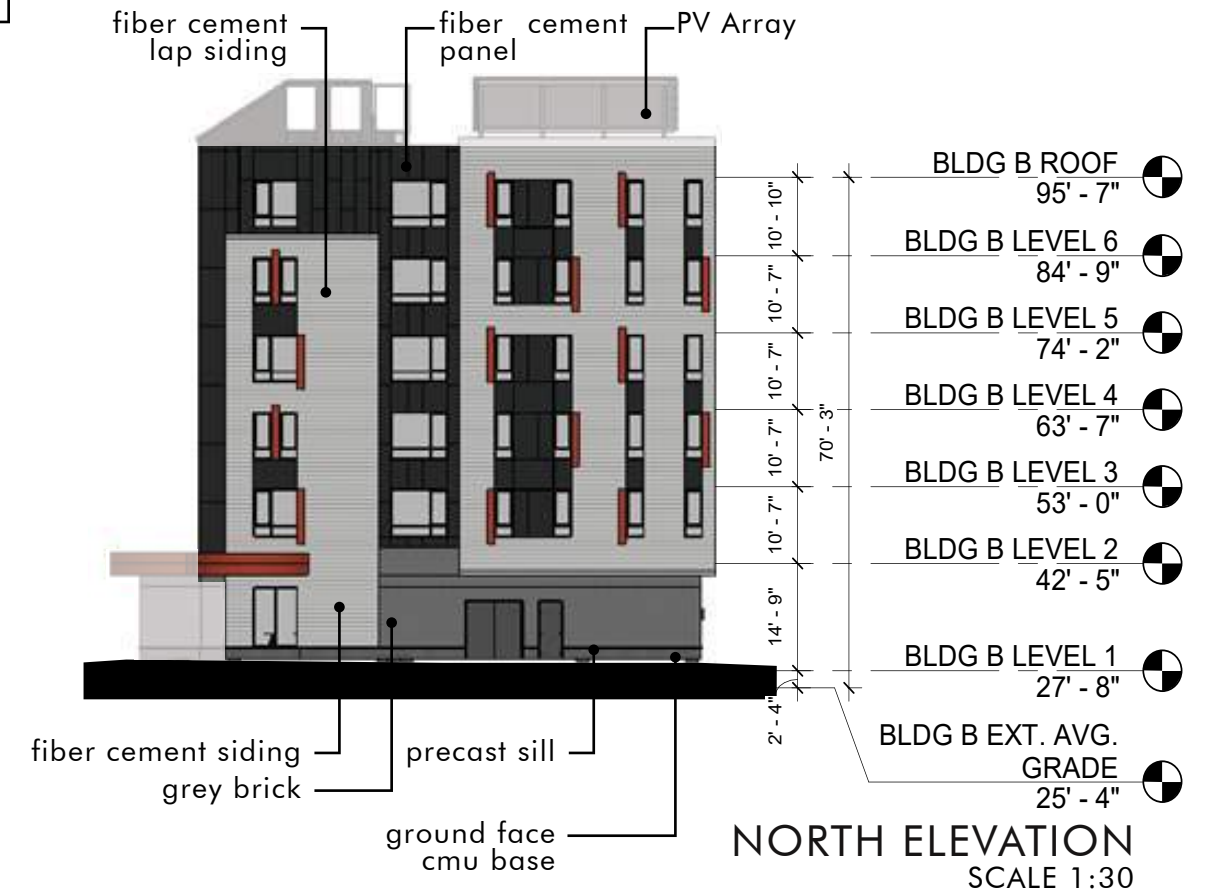
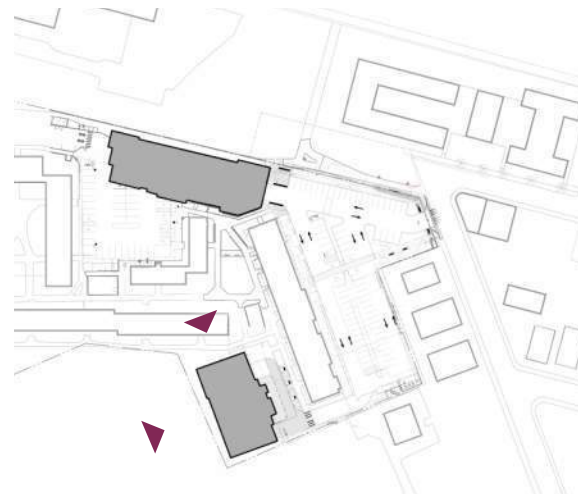


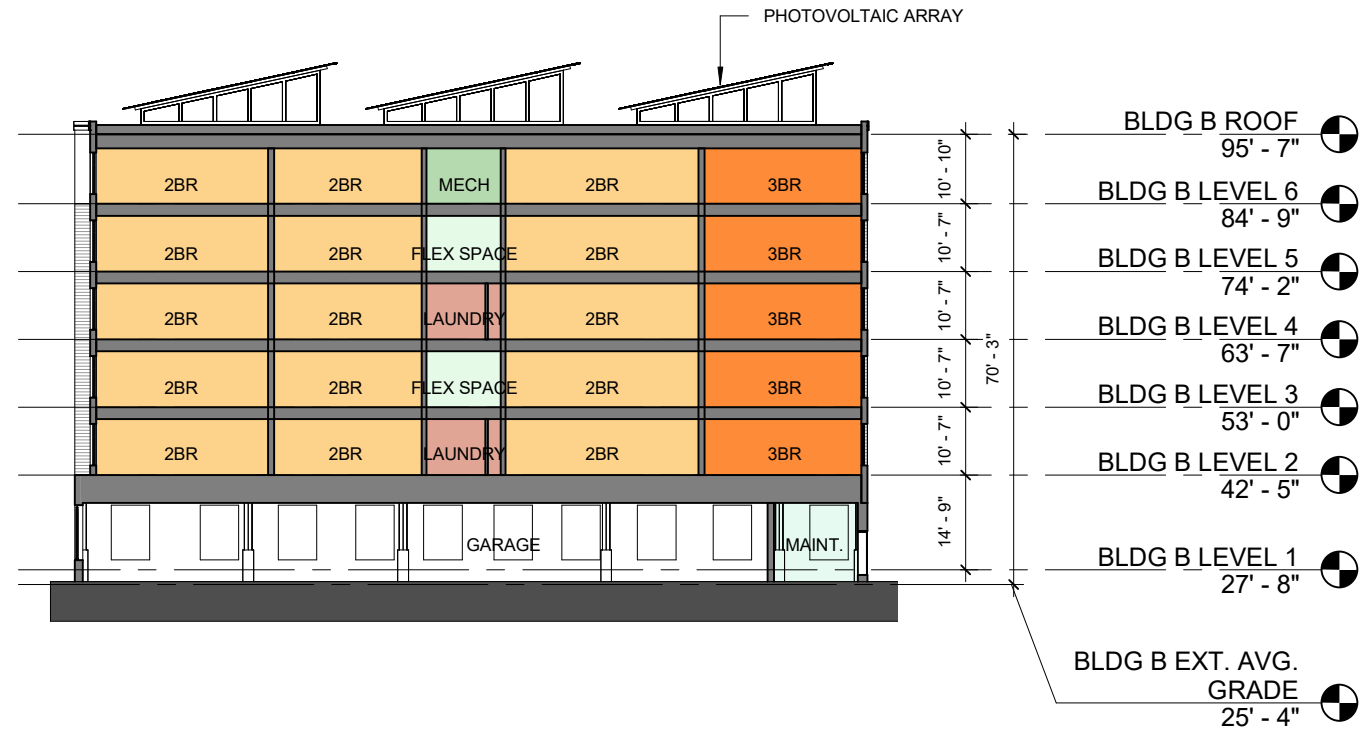
grey brick blend



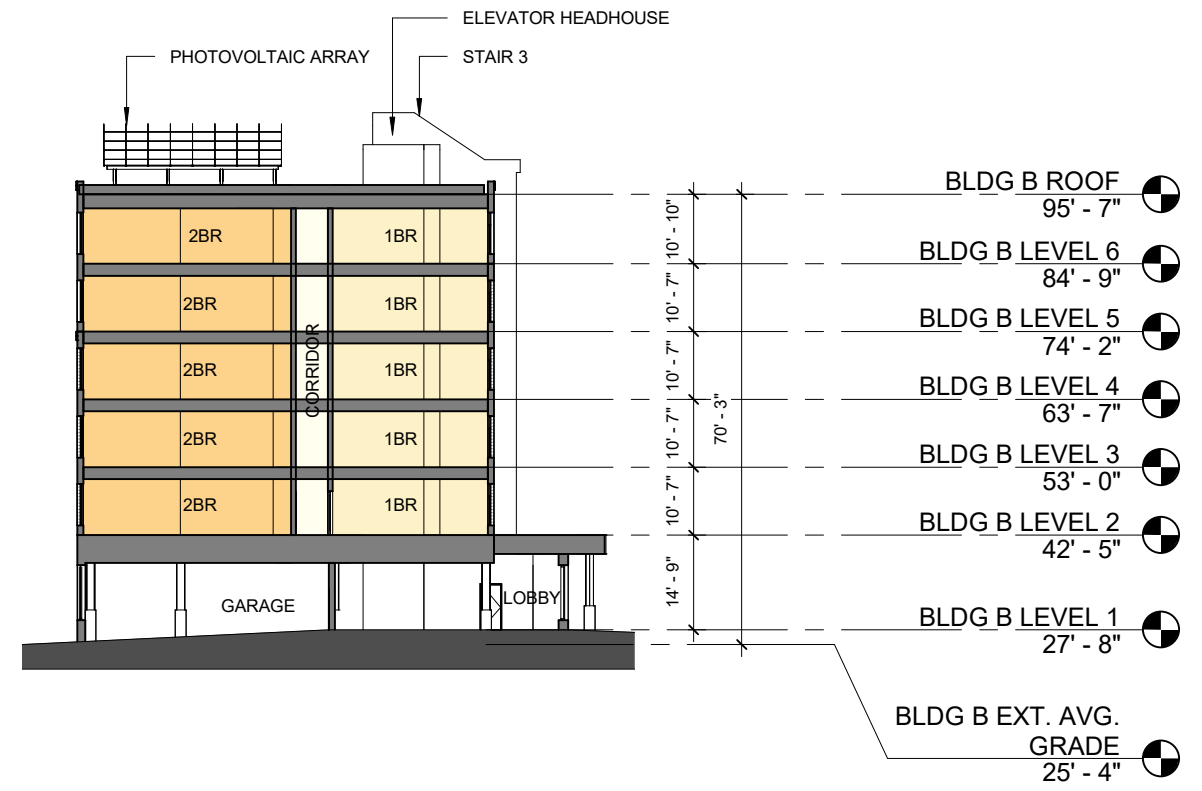
vertical stack grey brick

MATERIAL PALETTE

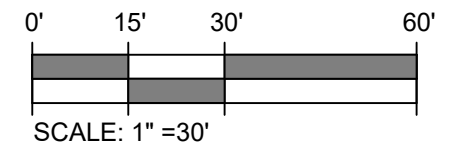




BLDG B - LONG SECTION



BLDG B - SHORT SECTION







CORNICE
RED ACCENT FIBER CEMENT PANEL
FIBER CEMENT LAP SIDING
FIBER CEMENT PANEL

BUILDING A - VIEW FROM CAMBRIDGE CITY PARK



RED COMPOSITE METAL CANOPY

RED ACCENT FIBER CEMENT PANEL
FIBER CEMENT LAP SIDING
GREY FIBER CEMENT PANEL



BIKE ROOM
GREY BRICK
LIGHT SCONCES
GROUND FACE CMU BASE
DOUBLE BRICK HEADER
LOW WALL SEPARATES PEDESTRIANS FROM VEHICLES
BOLLARDS FOR PEDESTRIANS SAFETY
PEDESTRIAN CROSSING

SPOT LIGHTS TO MARK PEDESTRIAN PATH

LINEAR DIRECTIONAL LIGHTS @ GARAGE ENTRY



PEDESTRIAN CROSSING

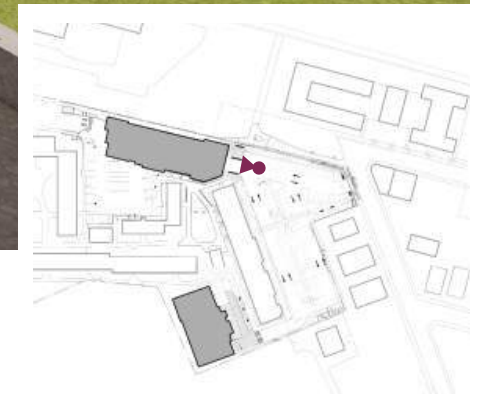
GREY BRICK

GROUND FACE CMU BASE

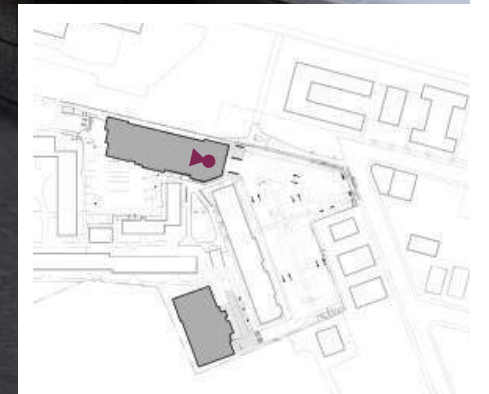
DOUBLE BRICK HEADER

LOW WALL SEPARATES PEDESTRIANS FROM VEHICLES

BOLLARDS FOR PEDESTRIANS SAFETY



DOUBLE BRICK HEADER
LINEAR LIGHTING PERPENDICULAR TO DRIVING
DIRECTION TO VISUALLY SLOW DOWN TRAFFIC

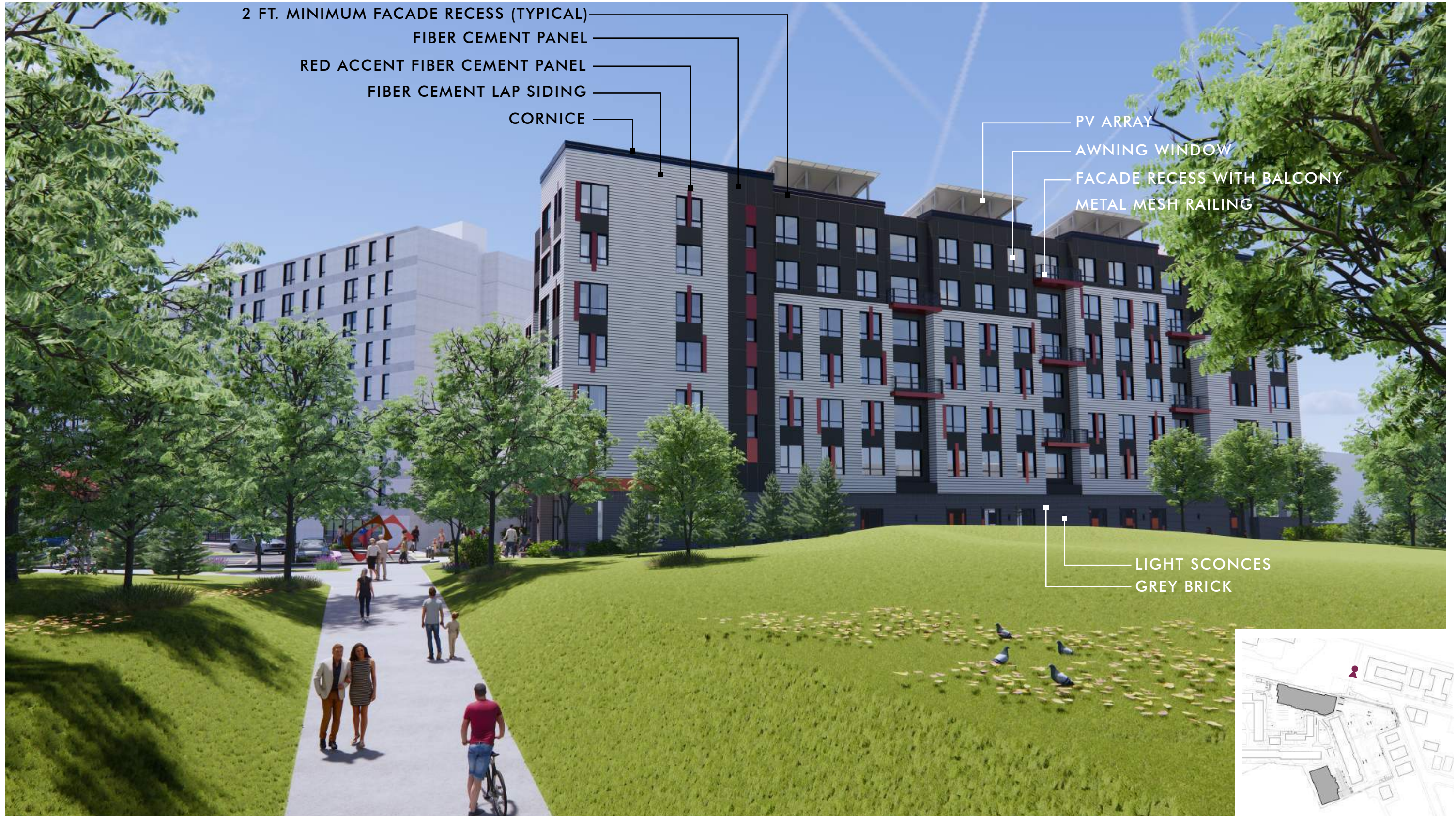






BLDG 21

PLAZA AT THE END OF THE YERXA UNDERPASS











- CORNICE
- FIBER CEMENT PANEL
- AWNING WINDOW (TYPICAL)
- FIBER CEMENT LAP SIDING
- FIBER CEMENT PANEL
- BALCONY MIN 2FT. RECES WITH METAL MESH RAILING

- GREY BRICK
- LOBBY ENTRANCE



EXISTING BLDG 21

FIBER CEMENT LAP SIDING

COMPOSITE METAL PANEL CANOPY

DOUBLE HEADER VERTICAL GREY BRICK

GOUND FACE CMU BASE

MANAGEMENT OFFICE ENTRANCE



DOUBLE HEADER VERTICAL
GREY BRICK

COMPOSITE METAL
PANEL CANOPY

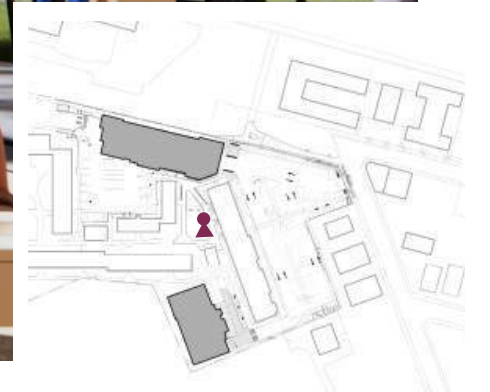
EXISTING BLDG 21

GROUND FACE CMU BASE



PV ARRAY
FIBER CEMENT PANEL
FIBER CEMENT LAP SIDING

NEW PLAYGROUND







FIBER CEMENT PANEL
PV ARRAY
RED FIBER CEMENT PANEL
FIBER CEMENT LAP SIDING

BLDG A

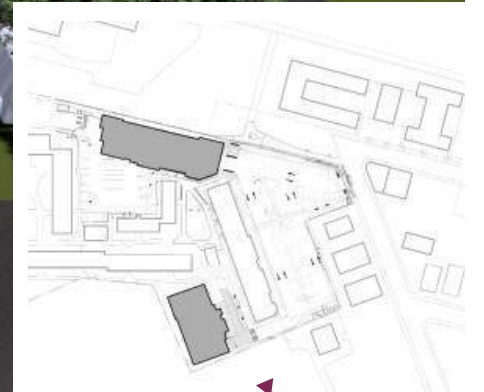
BLDG 21

GARAGE STOREFRONT FRAMES WITH METAL
PANELS PATTERN AND MESH SCREENS









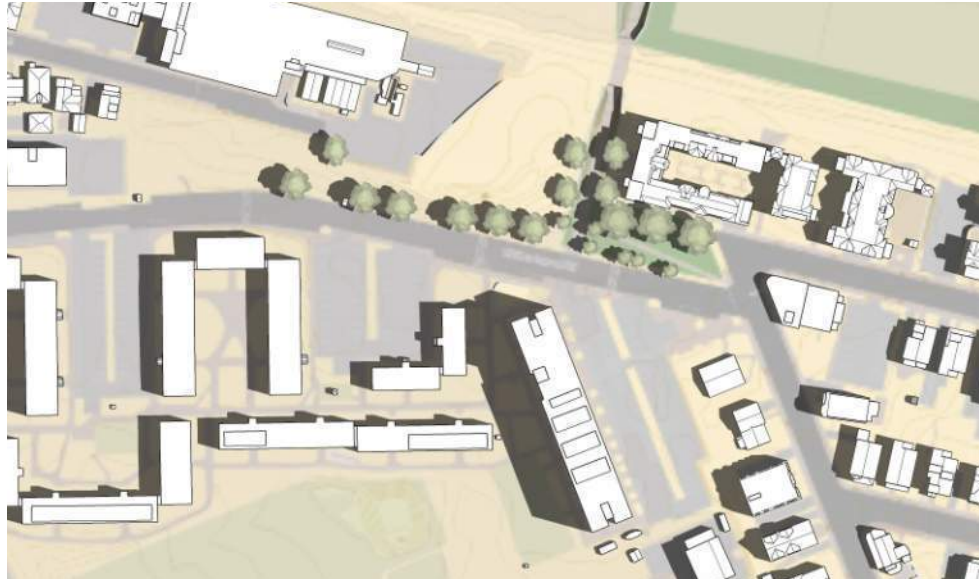




09 Shadow Studies - June

 NEW BUILDING FOOTPRINT  EXISTING SHADOWS  NEW SHADOW  NEW SHADOW OVER EXISTING SHADOW

EXISTING SITE



9AM



12PM



530PM

PROPOSED SITE



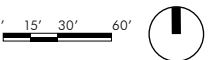
9AM



12PM



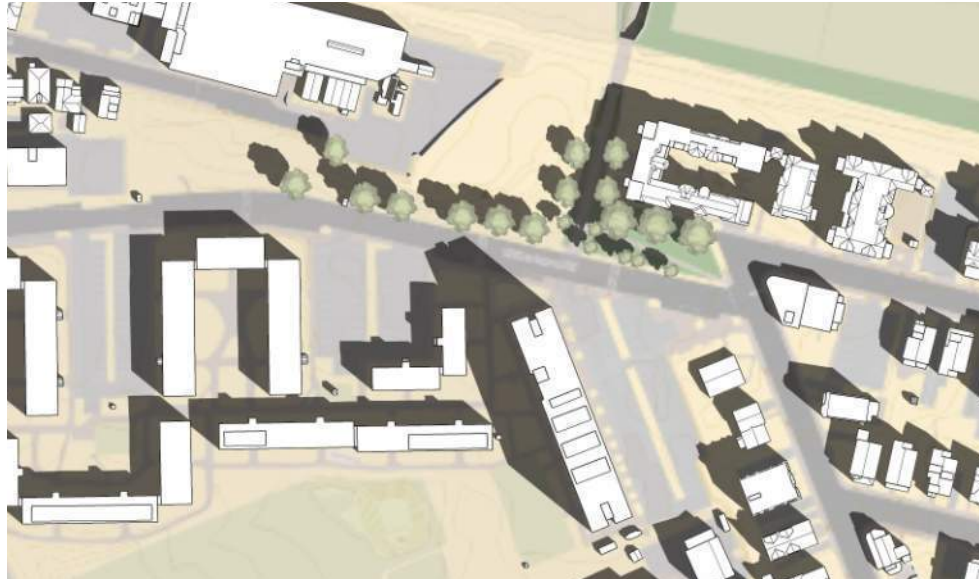
530PM



09 Shadow Studies - September

 NEW BUILDING FOOTPRINT  EXISTING SHADOWS  NEW SHADOW  NEW SHADOW OVER EXISTING SHADOW

EXISTING SITE



9AM



12PM



430PM

PROPOSED SITE



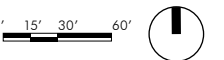
9AM



12PM



430PM



09 Shadow Studies - December

 NEW BUILDING FOOTPRINT  EXISTING SHADOWS  NEW SHADOW  NEW SHADOW OVER EXISTING SHADOW

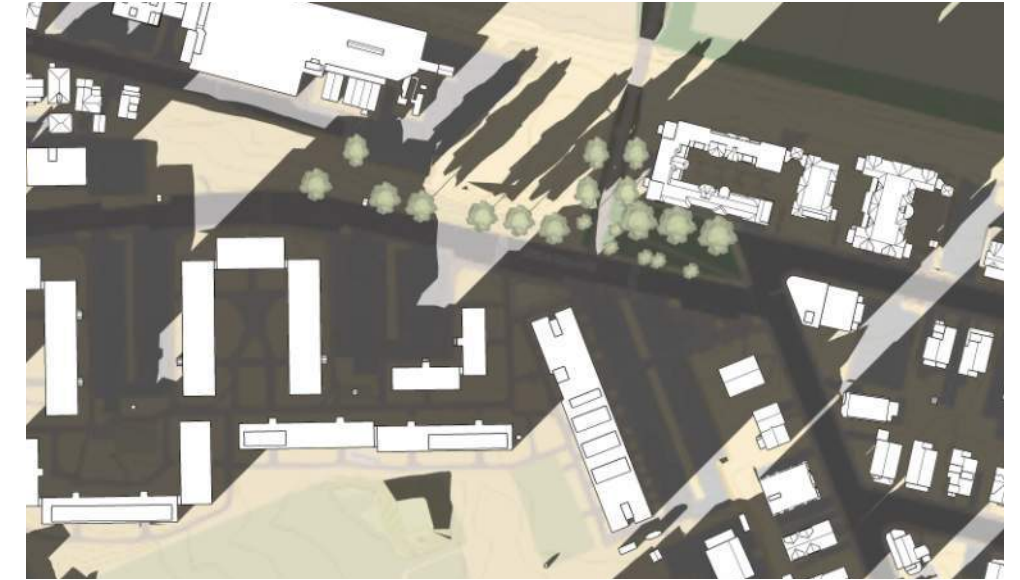
EXISTING SITE



9AM



12PM



3PM

PROPOSED SITE



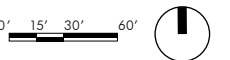
9AM



12PM



3PM



09 Shadow Studies - March & June

MARCH



9AM



12PM

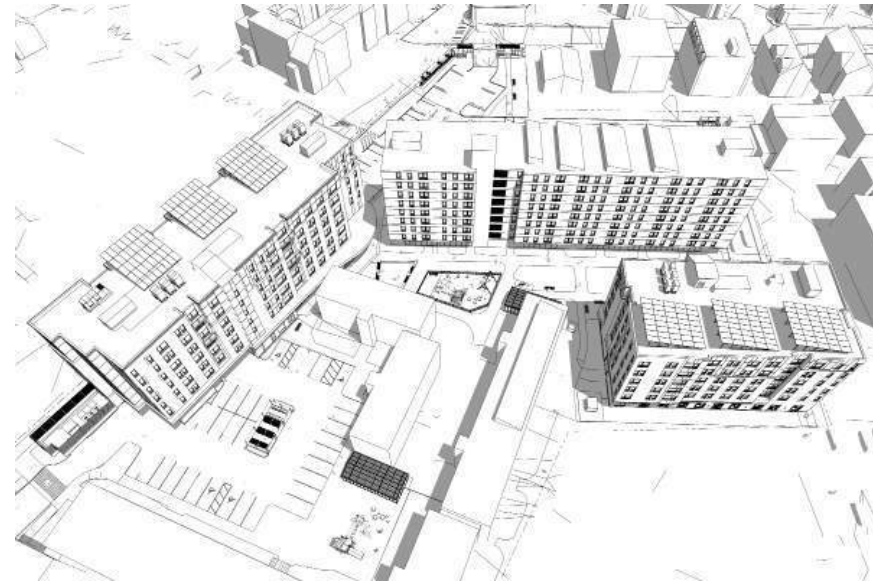


4:30PM

JUNE



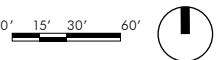
9AM



12PM



5:30PM



09 Shadow Studies - September & December

SEPTEMBER



9AM



12PM



4:30PM

DECEMBER



9AM



12PM



3:00PM

