



# MIT KENDALL SQUARE

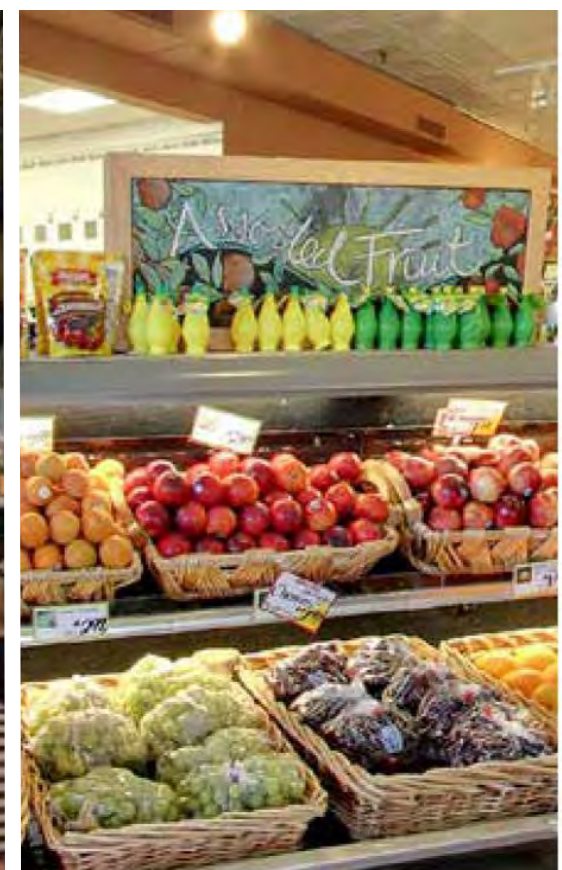
LANDSCAPE II PLANNING BOARD II FEBRUARY 28, 2017



# ***MIT envisions the SoMa open space as...***

- *a bustling, welcoming gateway* to the MIT campus and to the heart of Kendall Square.
- *a dynamic place that draws people in – and draws people together* – from across the city, the neighborhood, the campus and beyond. Again and again.
- *the go-to spot for experiencing innovation, discovery and fun*, where everyone can enjoy a rich, ever-evolving array of activities – each and every day.







## ***What we heard...***

- What will make this a memorable open space every day?
- How do the buildings relate to the open space?
- What will people do here? How will the programming work?



## ***What we heard...***

- What will make this a memorable open space every day?
- How do the buildings relate to the open space?
- What will people do here? How will the programming work?



# ***What will make this a memorable open space every day...***

## INCLUSIVE URBAN FORM

- Welcoming Gateways from Main Street at Carleton, Hayward & Wadsworth
- Clear On-Site Wayfinding & Engaging Technology to Promote Programming
- Focal Activity / Feature at Confluence of Gateway & Infinite Corridor

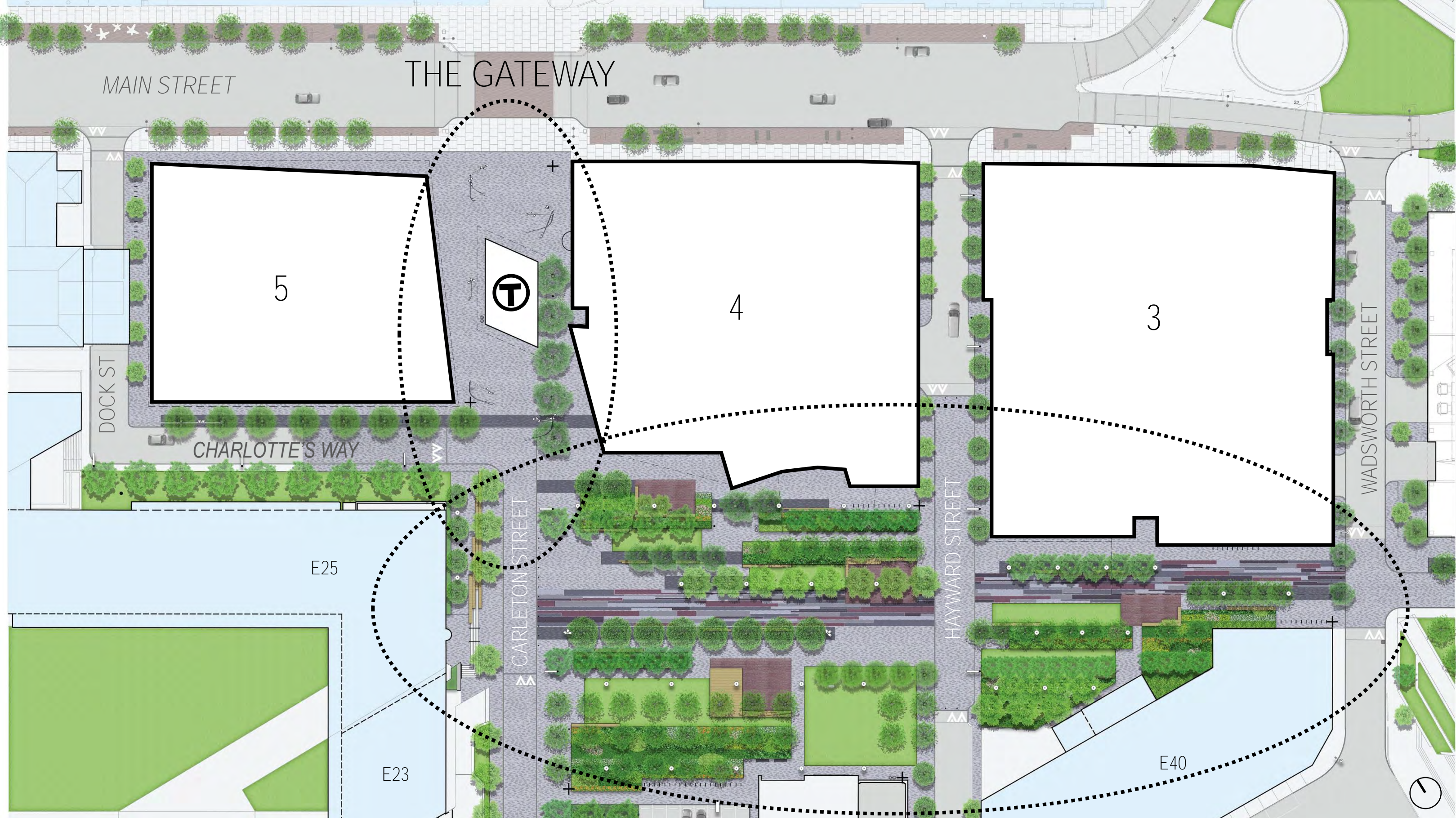
## CREATIVE & ENGAGING SITE FEATURES & EVERYDAY AMENITIES

- Vibrant & Robust Paving Design
- Feature Lighting Installation @ Infinite Corridor
- Multi-Media Projection Wall
- Custom Benches, Seat Walls and Multi-Use Platforms
- **Flexible Program 'Rooms'**
- Layered & Dynamic Urban Gardens

## INSIDE / OUTSIDE PUBLIC REALM

- Integration & Synergy w/ Active Ground Floor Uses





THE GATEWAY

MAIN STREET

5

4

3

DOCK ST

CHARLOTTE'S WAY

CARLETON STREET

HAYWARD STREET

WADSWORTH STREET

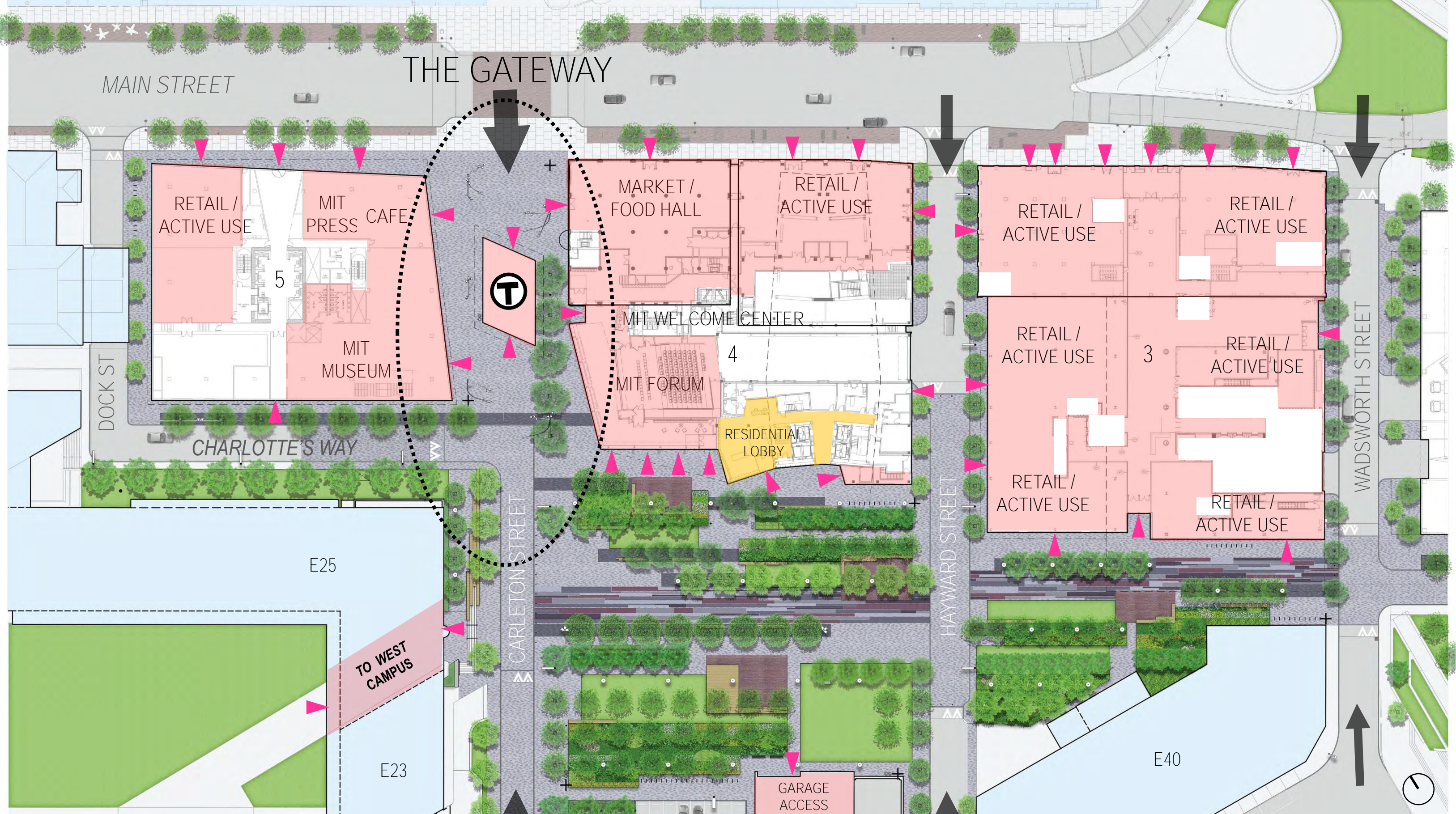
E25

E23

E40

CORE OPEN SPACE





## INCLUSIVE URBAN FORM – WELCOMING ‘GATEWAYS’

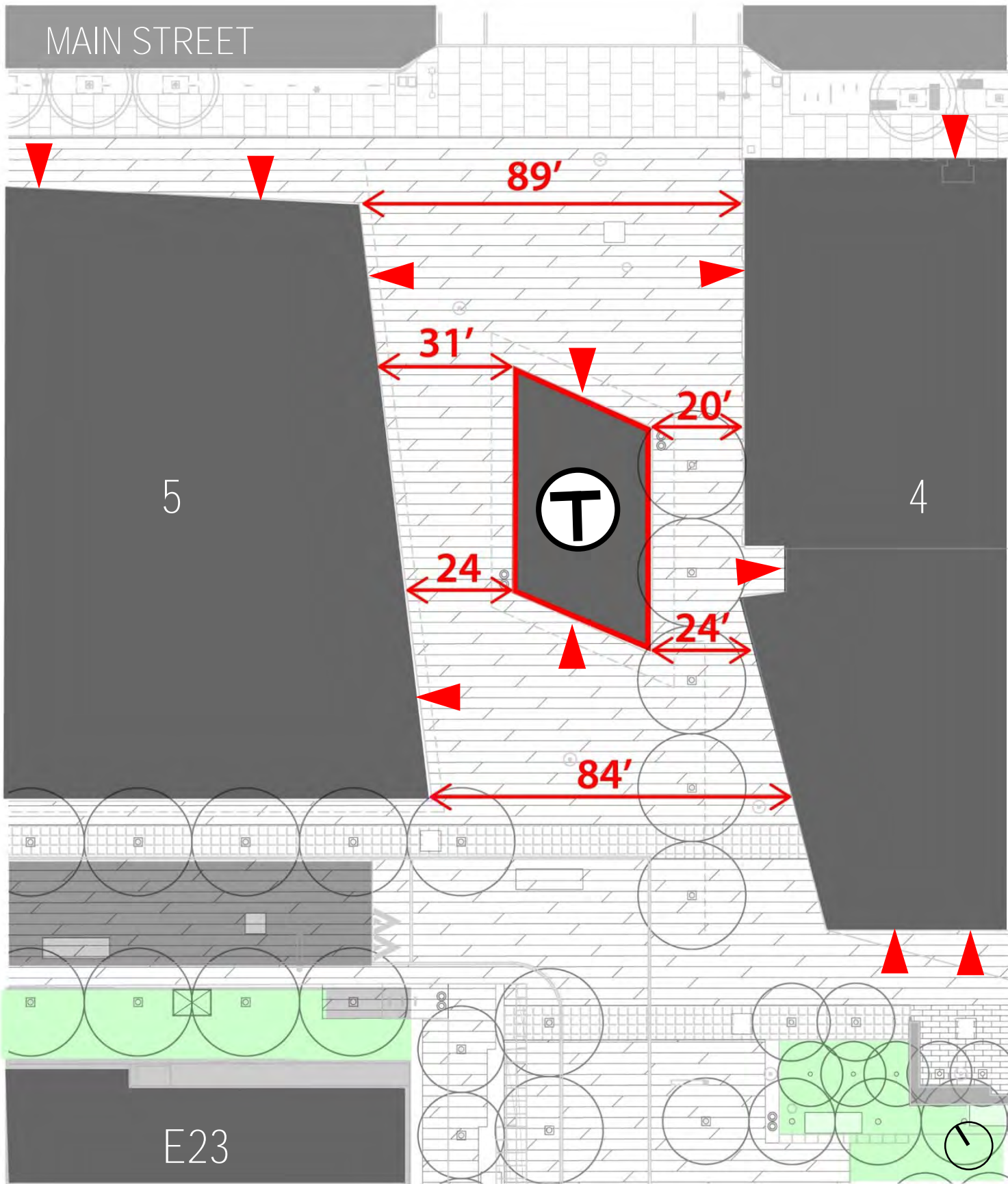
- Active Ground Floor Uses
- Ground Floor Entrance



EXISTING CONDITION



PROPOSED DESIGN



WELCOMING GATEWAY FROM MAIN STREET // KENDALL/MIT 'T' STATION





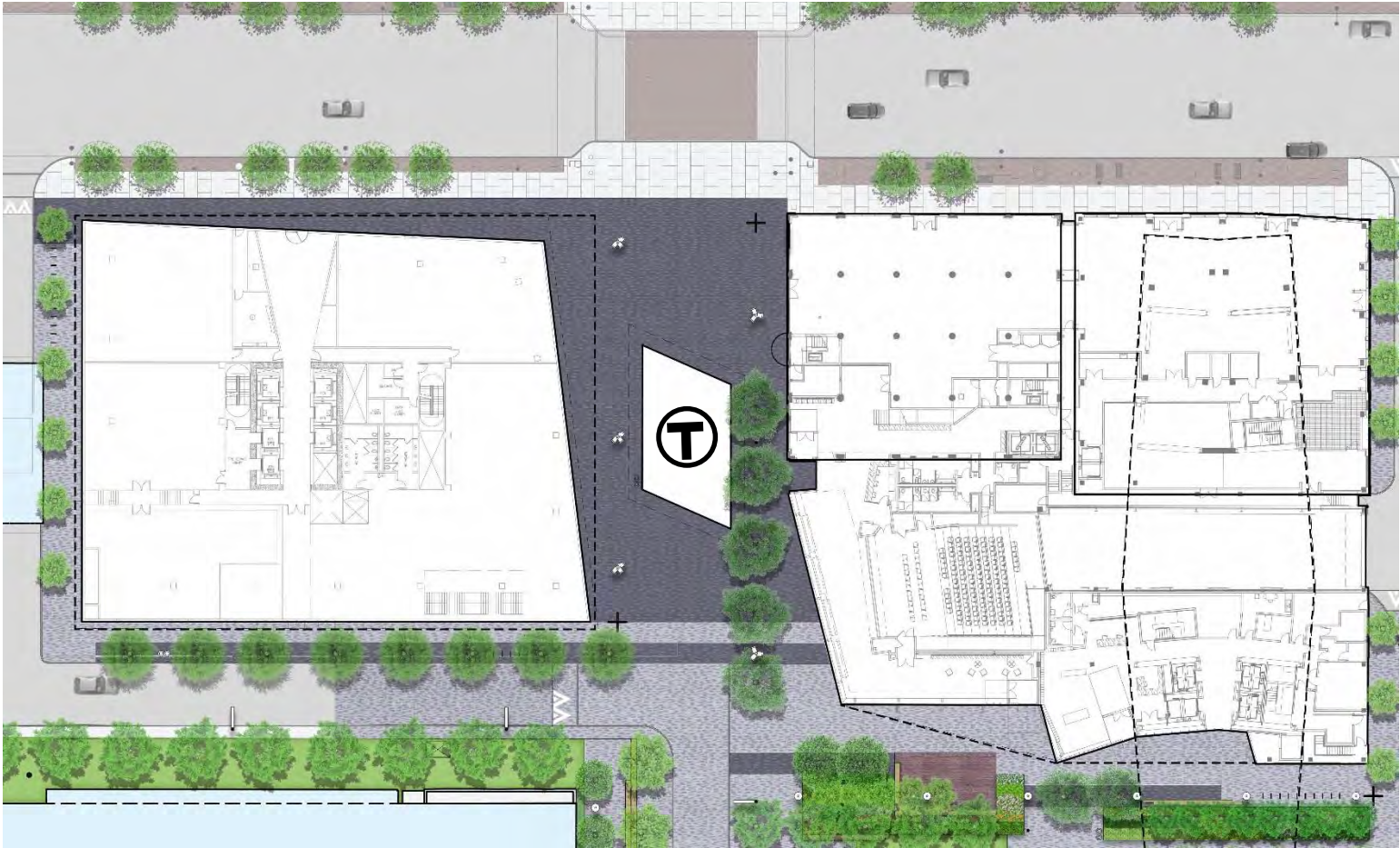
WELCOMING GATEWAY FROM MAIN STREET // KENDALL/MIT 'T' STATION



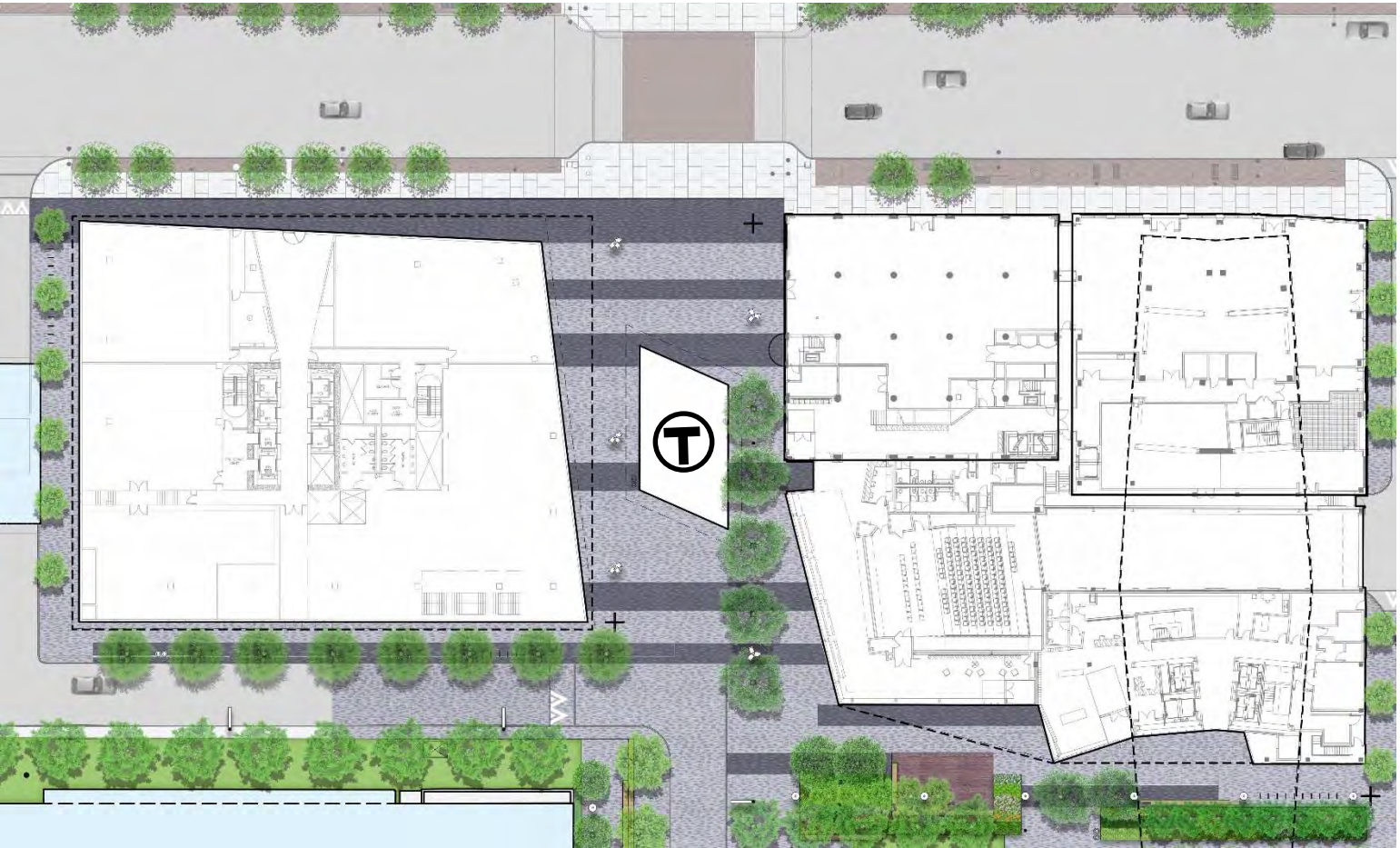




DISTINCT PAVING TREATMENT // *STUDY A – SOLID*



*STUDY B – BANDS*



FEATURE LIGHTING // *CUSTOM MULTI-HEAD FIXTURE*



WELCOMING GATEWAY FROM MAIN STREET // KENDALL/MIT 'T' STATION





WELCOMING GATEWAY FROM MAIN STREET // CARLETON STREET





WELCOMING GATEWAY FROM MAIN STREET // CARLETON STREET





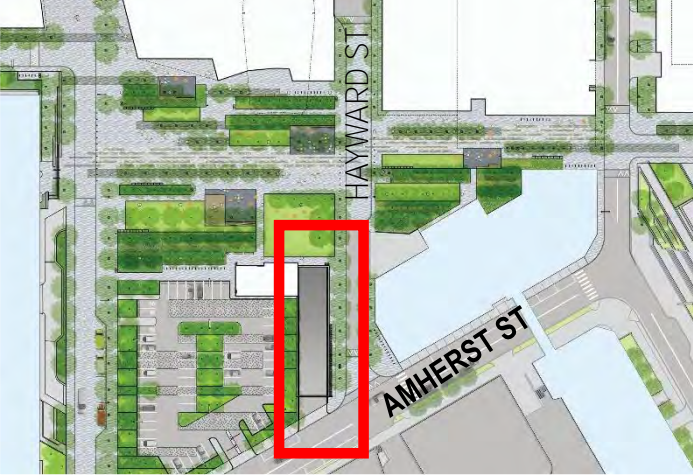
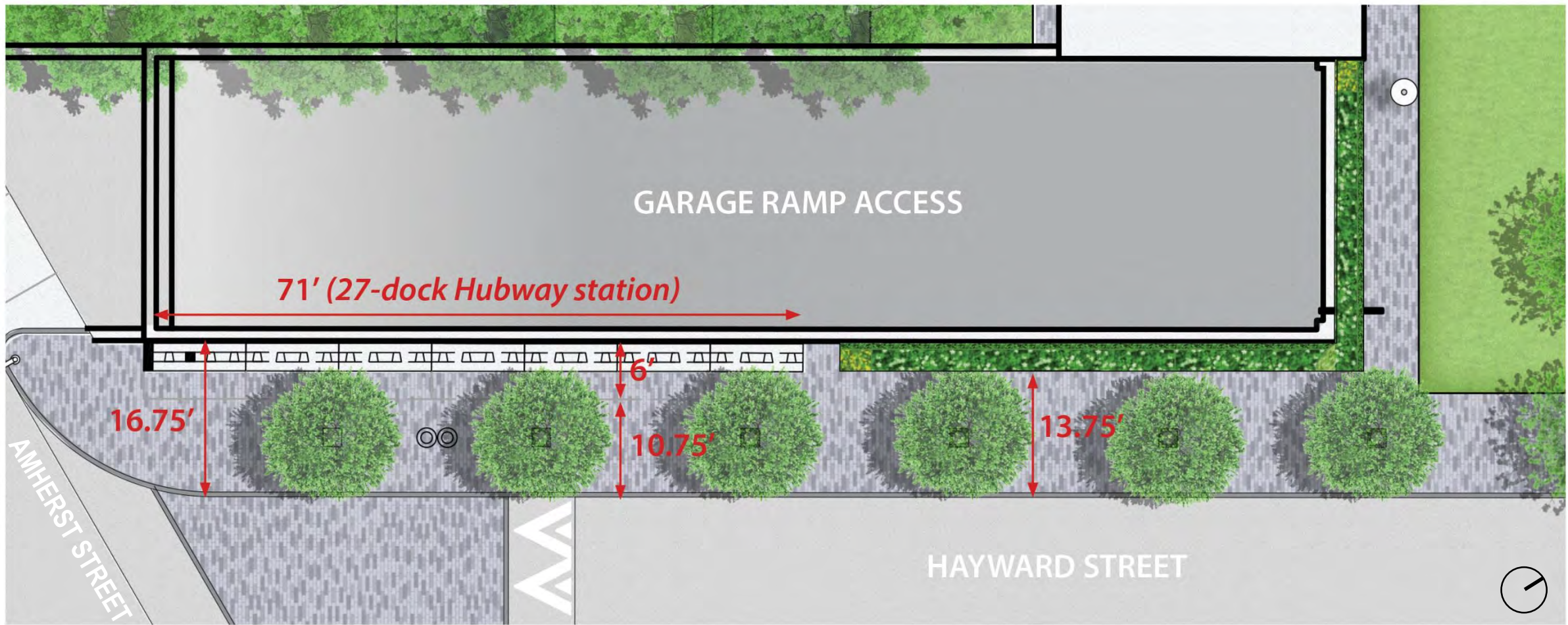
WELCOMING GATEWAY FROM MAIN STREET // HAYWARD STREET



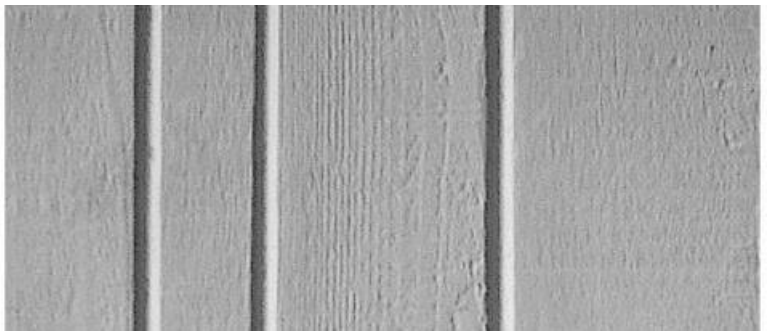


WELCOMING GATEWAY FROM MAIN STREET // HAYWARD STREET





PLANTING *woody / evergreen*



WALL TEXTURE *vertical formliner*

# WELCOMING GATEWAY FROM AMHERST STREET // HAYWARD STREET





WELCOMING GATEWAY FROM AMHERST STREET // HAYWARD STREET





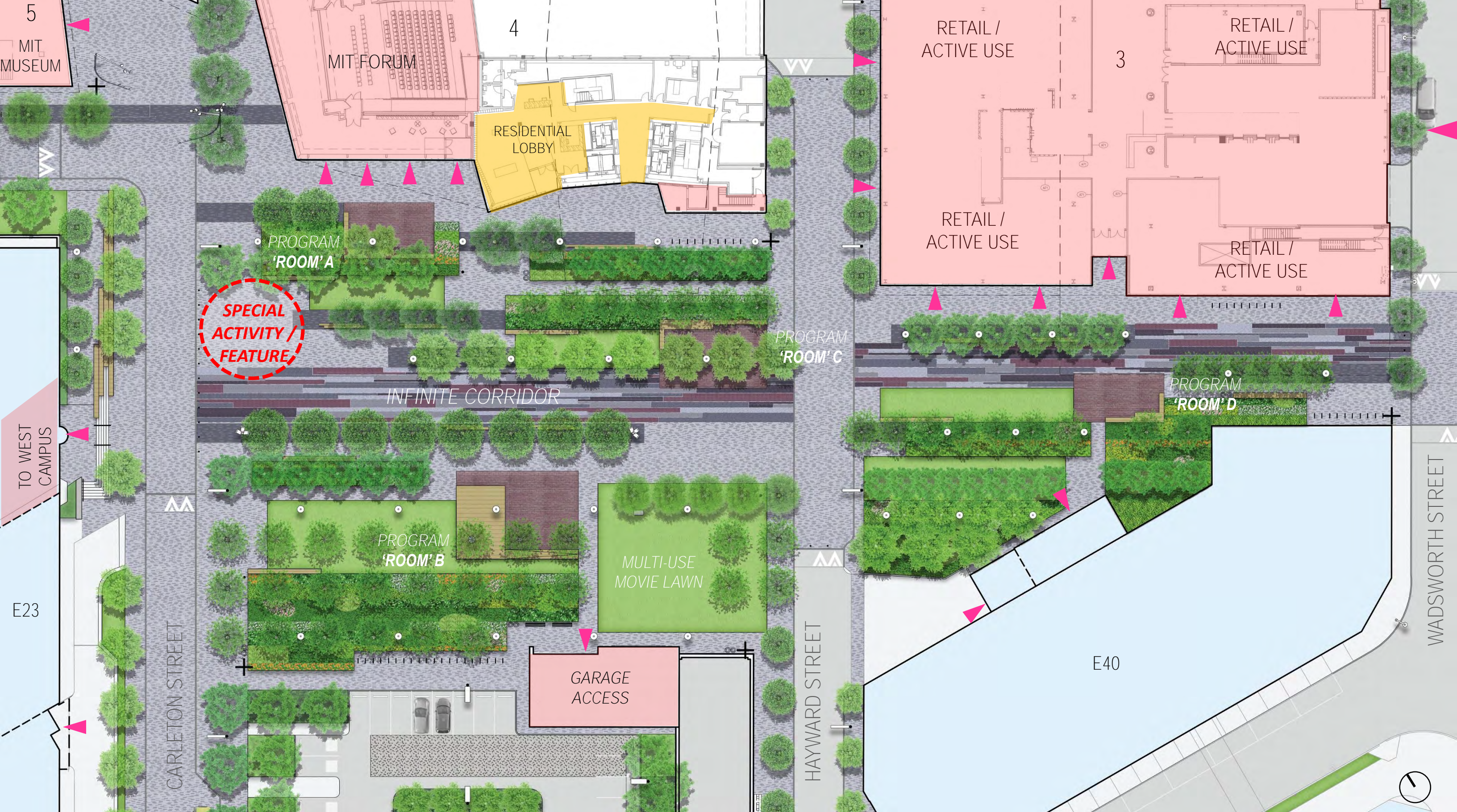
WELCOMING GATEWAY FROM AMHERST STREET // HAYWARD STREET





CLEAR ON-SITE WAYFINDING / ENGAGING TECHNOLOGY TO PROMOTE PROGRAMMING





INCLUSIVE URBAN FORM – WELCOMING CORE OPEN SPACE

- Active Ground Floor Uses
- Ground Floor Entrance





CREATIVE & ENGAGING SITE FEATURES & EVERYDAY AMENITIES







**SRI >29** | **SRI <29**  
HIGH REFLECTIVITY | LOW REFLECTIVITY



**PAVER A**      **PAVER B**      **PAVER C**      **PAVER D**      **PAVER E**      **PAVER F**      **PAVER G**

**FIELD**

**BAND**

**CORRIDOR**

VIBRANT & ROBUST PAVING DESIGN