

# Commission for Persons with Disabilities

51 Inman Street · Cambridge, MA · 02139-1732

617-349-4692 voice · 617-492-0235 TTY · 617-349-4766 fax



Philibert Kongtcheu  
Chair

Gary Dmytryk  
Secretary

Loring Brinckerhoff  
Avril dePagter  
Mary Devlin  
Jerry Friedman  
Stelios Gragoudas  
Valerie Hammond  
Nicole Horton-Stimpson  
Jackie Jones  
Daniel Stubbs

Rachel Tanenhaus  
Executive Director/  
ADA Coordinator

Kate Thurman  
Project Coordinator

**The next meeting of the Cambridge Commission for Persons with Disabilities  
will be held online via Zoom on Thursday, January 13, 2021 at 5:30 PM**

PLEASE MAKE EVERY EFFORT TO JOIN BY 5:30 PM

## AGENDA

**\*Please keep your microphone muted when you are not speaking\***

- |   |         |                                     |
|---|---------|-------------------------------------|
| 1. Introductions  | 2 min.  |                                     |
| <i>If needed, alternates named</i>  |         |                                     |
| 2. Announcements  | 2 min.  | CCPD staff / Board                  |
| 3. Presentation by the Disabled<br>Persons Protection Commission (DPPC)                     | 25 min. | Sarah Nechamen                      |
| <i>See page 4 of this agenda packet for presentation</i>                                    |         |                                     |
| 4. Approval of December 9 minutes   | 2 min.  | CCPD Board                          |
| <i>See page 24 of this agenda packet for minutes</i>  |         |                                     |
| 5. Introduction of CCPD's new Police<br>Liaison   | 10 min. | Deputy Superintendent<br>John Boyle |
| 6. Discussion of CCPD Meeting<br>Expectations   | 10 min. | CCPD staff / Board                  |
| 7. Public Works Update  | 10 min. | Jerry Friedman                      |
| 8. Chair's Report   | 10 min. | Phil Kongtcheu                      |
| 9. Old Business   | 3 min.  | CCPD staff / Board                  |
| 10. New Business  | 3 min.  | CCPD staff / Board                  |
| 11. Public Input  | 3 min.  | general public                      |
| <i>See pages 2&amp;3 of this agenda packet for instructions on providing public comment</i> |         |                                     |

### **CART/closed captioning will be provided for this meeting**

Captions can be turned on within the Zoom platform. Additionally, you may stream CART in a separate URL at <http://bit.ly/CCPDCART> (captions will not appear until the meeting has started)

The City of Cambridge Commission for Persons with Disabilities, does not discriminate, including on the basis of disability. The Commission for Persons with Disabilities will provide auxiliary aids and services, written materials in alternative formats, and reasonable modifications in policies and procedures to persons with disabilities upon request.

**The next CCPD meeting will be held online on Thursday, February 10**

Members of the public: See instructions on following pages on how to watch the CCPD meeting and provide public comment via Zoom

# Instructions on How to Join the January 13, 2022 CCPD Meeting as a Member of the Public

## Join Online:

Registration is required in order to view the meeting or to participate in public comment.

Register online at

[https://cambridgema.zoom.us/webinar/register/WN\\_yh\\_ome\\_FT1CD6gMBFJ37fQ](https://cambridgema.zoom.us/webinar/register/WN_yh_ome_FT1CD6gMBFJ37fQ)

After registering, you will receive a confirmation email containing information about joining the webinar. For more information regarding Zoom technology visit:

<https://www.cambridgema.gov/Departments/citycouncil/zoomonlinemeetinginstructions>

## Join by Phone:

If you do not have access to the internet, you may also call into the meeting using a phone by dialing any of the following numbers and entering the Webinar ID (registration is not required). For higher quality, dial a number based on your current location:

+1 301 715 8592

+1 312 626 6799

+1 929 436 2866

+1 253 215 8782

+1 346 248 7799

+1 669 900 6833

When prompted, enter the webinar ID: **818 3166 5881**

**NOTE:** your microphone will be automatically muted until you are called on to speak during the public comment period of the meeting. See instructions on the following page for how to “raise your hand” in order to indicate that you would like to speak during the public comment period on the agenda.

## Instructions for Providing Public Comment During CCPD Meetings via Zoom

Anyone wishing to address the Cambridge Commission for Persons with Disabilities (CCPD) during the Public Comment section of the agenda may indicate that by "raising their hand" virtually within the Zoom platform. The host (CCPD staff) will call on members of the public to speak in the order in which their hands were raised. Please note that while you may raise your hand at any point during the meeting, you will not be called on to speak until the Public Comment period of the meeting.

To raise your hand:

- On a Mac or PC:
  - Click "raise hand" in the webinar control panel
  - Alternatively, you may use the keyboard shortcut to raise and lower your hand:
    - Windows: press "Alt+Y"
    - Mac: press "Option+Y"
  - When you are called on by the host to speak, you will be prompted to unmute your microphone (you must unmute yourself, as the host does not have the ability to unmute individuals).
  - After you have spoken or once your 3 minutes are up, your microphone will be muted by the host
  
- If you are calling in by phone:
  - Press \*9 to raise and lower your hand
  - When you are called on to speak during the public comment period, you will need to press \*6 to unmute yourself (press it again to mute yourself)
    - Note: your phone number will be visible to only the host of the meeting (CCPD staff). Because your name will not be displayed, we will call on you when it's your turn to comment by using the last four (4) numbers of your phone number to identify you. For example, "The person calling in from the number ending in ####, you may now provide public comment."
    - After you have spoken or once your 3 minutes are up, your microphone will be muted by the host

**Once they have the floor, members of the public are asked to identify themselves**, and each speaker is limited to not more than three (3) minutes. Although the public comments should, whenever possible, address one or more items on the agenda for that particular meeting, if time permits, the Chair may allow a speaker to comment on matters that may not directly address an item on the agenda, but do concern the Commission.

Thank you for your patience as we work together to make virtual meetings accessible for everyone!



# Reporting Abuse and Neglect of Persons with Disabilities

SARAH NECHAMEN

SARAH.NECHAMEN@MASS.GOV

DISABLED PERSONS PROTECTION COMMISSION

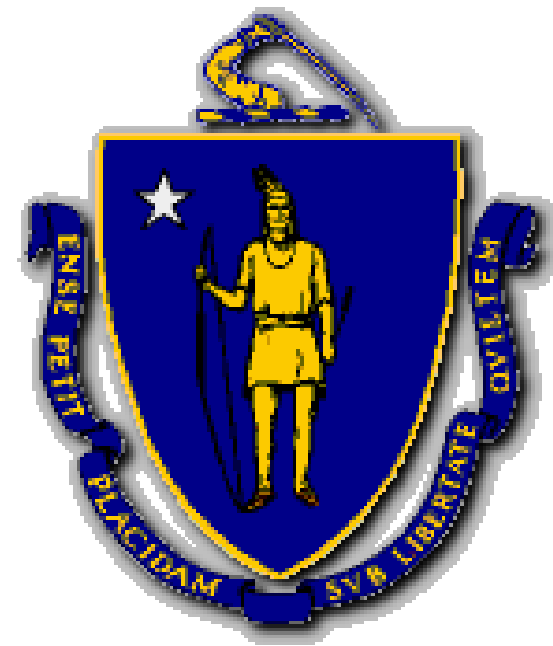
OUTREACH AND TRAINING SPECIALIST

# Disabled Persons Protection Commission (DPPC)

Independent state agency responsible for:

- The **investigation and remediation** of abuse
- Against **adults with disabilities**
- By **caregivers**

[mass.gov/dppc](https://mass.gov/dppc)



# Reporting Agencies for Abuse Against Persons with Disabilities

Department of  
Children and  
Families

DCF

Birth-17

1-800-792-  
5200

**Disabled Persons  
Protection  
Commission**

DPPC

18-59

1-800-426-  
9009

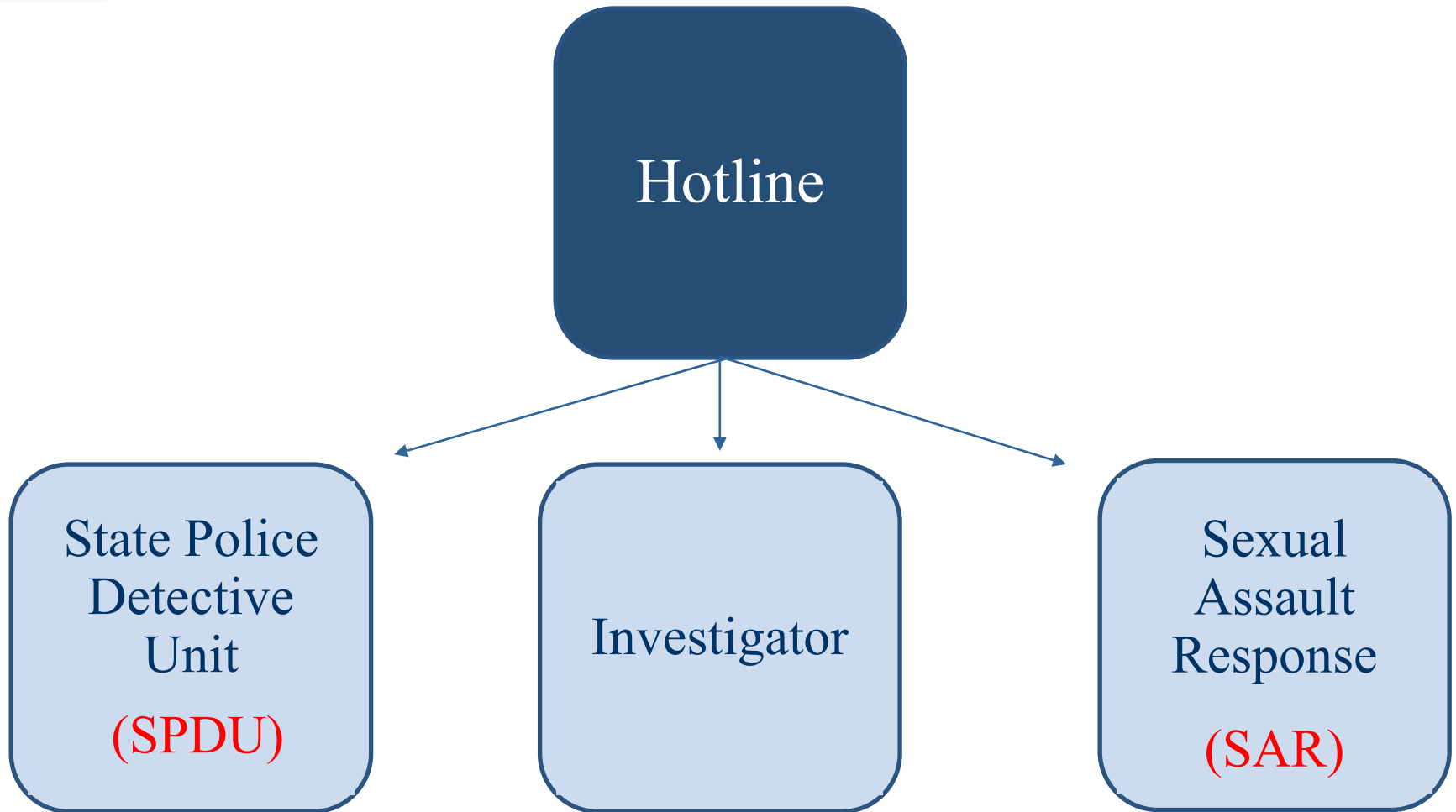
Executive Office  
of Elder Affairs

EOEA

60+

1-800-922-  
2275

# Screening of Reports



# Protective Services

## To Support the Victim

- Counseling
- Healthcare
- Peer Support
- Transportation
- Additional necessary services and supports

## To Prevent Future Abuse

- Respite services
- Staff training
- Policy changes
- Staffing ratios
- Agency action



# What Is Reportable?

## Scenario:

Brian is a member of the Cambridge Commission on Disability. His next-door neighbor is a man named Arthur, who has an intellectual disability and attends a Day Program outside of town. Twice recently, Arthur has returned from the Day Program with injuries, and he has been more withdrawn than usual. Brian suspects some sort of abuse is happening at the program— but he has no proof. He hasn't seen anyone abuse Arthur and Arthur hasn't told him anything.

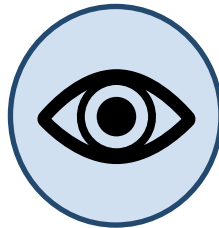
**Do these circumstances warrant a report to DPPC?**

# What is Reportable?

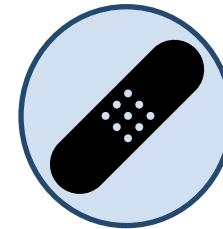
The standard for reporting  
in Massachusetts is  
***reasonable cause to believe***  
that abuse or neglect exists

# Determining Reasonable Cause

You witness  
abuse or  
neglect



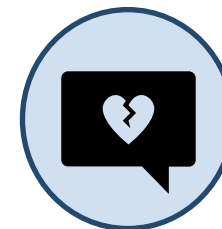
You notice  
an injury



Someone  
disclosed it  
to you



Changes in  
mood or  
behavior



# What Should I Report?

Physical  
abuse

Emotional  
abuse

Sexual  
abuse

Neglect/  
Omission

Deaths\*

# How to File an Abuse Report?

Call the DPPC 24-Hour Hotline  
at

**1-800-426-9009**

\*Deaf and hard of hearing callers, please use  
VRS or MARElay (711) to contact the DPPC hotline.

# What is a Mandated Reporter?

- A person, who as a result of their profession, is more likely to be aware of abuse
- List of Mandated Reporters is defined in M.G.L. 19C

# DPPC Mandated Reporters\*

- Medical personnel
- Medical examiners
- Social workers
- Foster parents
- Police Officers
- Dentists
- Public or private school teachers
- Educational administrators
- Psychologists
- Family or guidance counselors
- Animal Control Officers
- Day care workers
- **Private agencies** providing services to people with disabilities
- **State agencies** within the Executive Office of Health and Human Services

\*Includes interns and volunteers

# FREE DPPC MANDATED REPORTER TRAINING

Virtual and in-person trainings on reporting abuse of persons with disabilities, offered by the Disabled Persons Protection Commission (DPPC)



## LEARN

how to recognize signs of abuse, what you're required to report and how to report.



## CONTACT

[DPPCInfo@massmail.state.ma.us](mailto:DPPCInfo@massmail.state.ma.us) to schedule a virtual or in-person training for your organization.



## SIGN UP

for one of our bi-monthly virtual trainings at [dppcmandatedreportertraining.eventbrite.com](https://dppcmandatedreportertraining.eventbrite.com)



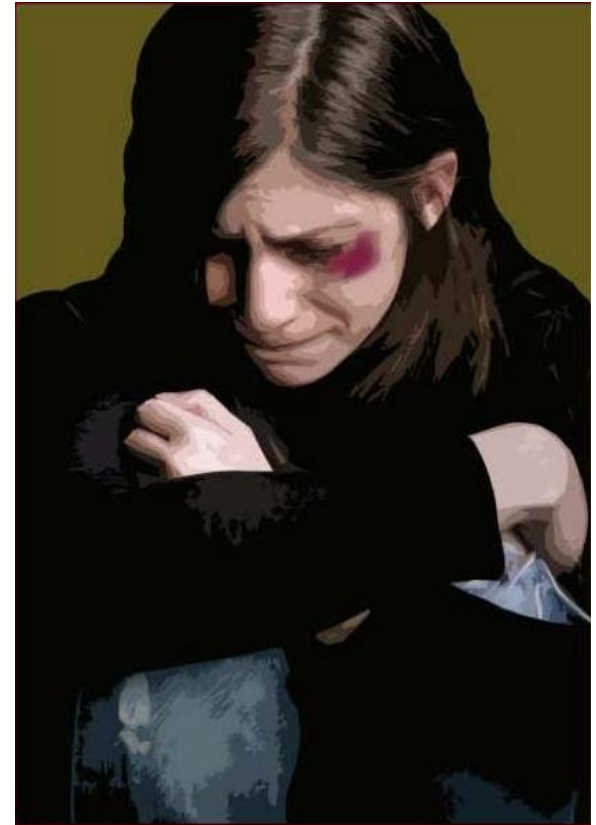
# Recognizing Abuse and Neglect of Persons with Disabilities

\*\*\*\*

Handout Available

# Indicators of Physical Abuse

- Bruises
- Human bite marks
- Unexplained internal injuries
- Fractures, sprains, dislocations
- Burns shaped like an object
- **Injuries to mouth**
- Extreme changes in behavior



# Examples of Emotional Abuse

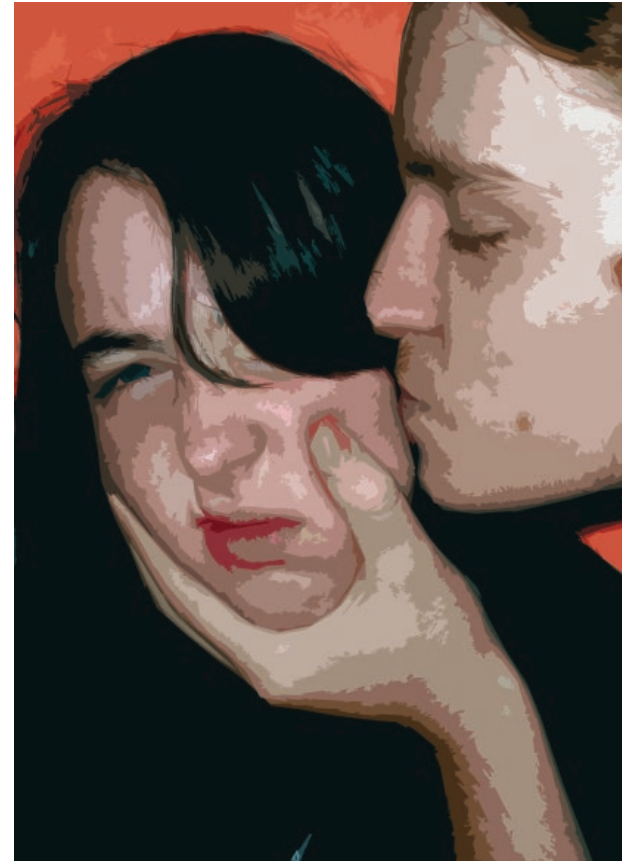
- Screaming, shouting, yelling, cursing
- Threatening violence
- Making discriminatory remarks, degrading
- Mimicking, cruel teasing
- Sexual harassment
- **Threatening** withdrawal of food, shelter, care, clothes, possessions or necessary equipment
- Using demeaning labels
- Silent treatment
- Intimidating gestures

# Emotional Abuse: Behavioral Indicators

- Obsess, worry, anxious, cry easily and frequently
- Low self-esteem
- Sudden loss or gain of appetite/weight
- **Fear of caregiver**
- Self-injurious behavior
- Emotionally withdrawn or anger
- Distrust of others
- Difficulty getting out of bed/sleeping

# Indicators of Sexual Abuse

- Genital or rectal bleeding
- Bruising to inner thighs
- Difficulty walking or sitting
- Torn/stained clothing/bedding
- Exposure to sexually explicit material
- **Unexplained gifts from caregiver**
- Frequent bathing
- Urinary tract infections/STDs
- Extreme changes in behavior



# Indicators of Neglect/Omission

- Dehydration or malnutrition
- Outdated/unmarked medications
- Decubiti (bedsores), skin rashes
- Evidence of poor hygiene
- Individual to individual abuse
- Lacks needed equipment



# Contact Us

## Sarah Nechamen

Outreach and Training Specialist at DPPC

[Sarah.Nechamen@mass.gov](mailto:Sarah.Nechamen@mass.gov)



***Abuse Reporting Hotline  
(800) 426-9009***

Draft

Cambridge Commission for Persons with Disabilities

## Minutes for Thursday, December 9, 2021

Online via Zoom

Meeting was called to order at 5:30 pm

### Present:

Members: Loring Brinckerhoff, Avril dePagter, Mary Devlin, Gary Dmytryk, Jerry Friedman, Stelios Gragoudas, Valerie Hammond, Nicole Horton-Stimpson, Jackie Jones, and Dan Stubbs

Absent: Phil Kongtcheu

Staff: Rachel Tanenhaus and Kate Thurman

### Minutes:

- Motions to approve the minutes for the September and October meetings were seconded and passed.

### Separated Bike Lanes, Bus Lanes, and Accessible Parking:

- Brooke McKenna, Assistant Director for Street Management, and Andreas Wolfe, Street Design Project Manager, of the Traffic, Parking, & Transportation Department (TPT) presented on the quick build bike lanes and resulting effects on disability parking on Massachusetts Ave. See attached presentation.
- Main points included the following:
  - City Council passed the Cycling Safety Ordinance in 2019, asking TPT to identify streets for “greater separation” of bike lanes.
  - The ordinance was amended in 2020 to require TPT to install about 25 miles of separated bike lanes over the next several years, including on specific streets (such as all of Mass Ave)
  - The Mass Ave quick build project was given a deadline of April 30, 2022 and was thus put on a fast-track timeline. The first section of North Mass Ave (Alewife to Dudley St.) has been completed.
    - For more information on the North Mass Ave section, see <https://www.cambridgema.gov/StreetsAndTransportation/ProjectsAndPrograms/MassAveDudleyStToAlewifeBrookPkwy>.
  - Due to the unusually tight deadline, TPT had to significantly adjust their typical process for implementing the changes. Usually, CCPD staff play a large role in street redesign projects, ensuring accessibility for people with disabilities. TPT regrets that CCPD staff were inadvertently left out of the discussions about the quick build bike lanes on North Mass Ave. Brooke assured members that CCPD staff would be consulted in all future projects, and CCPD staff emphasized their gratitude for the strong working relationship they have with TPT.
  - Even though CCPD staff were not initially consulted, TPT was able to add 4 designated disability parking spots in the North Mass Ave area in the final design. Those spaces have been installed and are against the curb. There were previously no designated disability parking spaces on that section of Mass Ave.
  - The Cycling Safety Ordinance does call for accessible parking to be treated differently than other kinds of parking; bike lane separation is not required at disability parking spaces, meaning they can remain against the curb.
  - Quick build projects are different than construction. In this case, the quick build project involved making changes in pavement markings, the installation of flex posts, changes to signage, and some modification in traffic signal timing. Quick build projects do not involve any construction.
  - In this project, bus lanes were installed in both directions and separated bike lanes were created, requiring the removal of parking on Mass Ave. The city tries to improve transit whenever they can. The



bus lane in the inbound direction can be used as a loading zone from 9AM to 10PM, but the outbound bus lane is in effect during all hours

- Changes to improve transit accessibility made as part of this project:
  - Relocation of a previously inaccessible bus stop to an accessible location
  - Lengthening of existing bus stops to more easily accommodate curb-level boarding
  - There are no bike lanes at the bus stops, allowing buses to pull up to the curb
- The first public meeting was held on September 14<sup>th</sup>, second on October 28<sup>th</sup>. Implementation began in November.
  - TPT made some changes to parking on side streets; they added metered spots on side streets, which helped to offset the amount of metered parking that was removed from Mass Ave
- All future projects will include engagement with CCPD staff and other stakeholders.
- TPT is always looking to expand their outreach
- CCPD members noted that the removal of parking on North Mass Ave has been especially difficult for people with disabilities and seniors.

### **Public Works Update:**

- Jerry said that DPW will be working on the quick build bike lanes on two other sections of Mass Ave: Dudley St. to Beech St. and Roseland St. to Waterhouse St. These sections are more complicated because of the MBTA's overhead bus wires. The way the ordinance was written gives them some more flexibility in those sections. DPW's task is to report to City Council by April 30, 2022 what the plans are for those sections. DPW is taking charge of these sections because there is construction involved.

Meeting adjourned at 6:54 PM.

Respectfully submitted,  
Kate Thurman

# Separated Bike Lanes, Bus Lanes and Accessible Parking

Mass Ave Dudley St to Alewife Brook Pkwy



**CITY OF CAMBRIDGE**

**TRAFFIC, PARKING, + TRANSPORTATION**

**Andreas Wolfe**

Street Design Project Manager

[awolfe@cambridgema.gov](mailto:awolfe@cambridgema.gov)

617-349-9162

# Cycling Safety Ordinance

- **2019:** Cambridge City Council Passed the *Cycling Safety Ordinance*: Requires the construction of separated bike lanes when streets are being reconstructed as a part of the City's Five-Year Plan for Streets and Sidewalks and they have been designated for "Greater Separation" in the Bicycle Network Vision
- **2020:** Cambridge City Council Passed Amendments to the *Cycling Safety Ordinance*: The amendments set ambitious requirements for the installation of approximately 25 miles of separated bike lanes within the next five to seven years
  - The location of these facilities will be informed by both the Cambridge Bicycle Network Vision and specific requirements in the Ordinance



# Cycling Safety Ordinance

- In general, the amendments to the Ordinance require the installation of separated bike lanes on:
  - All of Massachusetts Ave;
  - Broadway from Quincy St to Hampshire St;
  - Cambridge St from Oak St to Second St;
  - Hampshire St from Amory Street to Broadway;
  - Garden St, eastbound from Huron Ave to Berkeley St, and westbound from Mason St to Huron Ave; and
  - 11.6 miles of separated bike lanes in other locations that are a part of Bike Network Vision



# Timeline

**The ordinance sets an installation deadline of April 30, 2022 for us to install separated bike lanes on Mass Ave at the following locations:**

- Alewife Brook Pkwy to Dudley St **(complete)**
- Beech St to Roseland St
- Waterhouse St to Cambridge St **(complete)**
- Plympton St to Bow St **(complete)**
- Small portions between Sidney St to Memorial Dr



# Accessible Parking and the Cycling Safety Ordinance

The Cycling Safety Ordinance treats accessible parking different than other types of parking

Specifically:

- Bicycle lane separation is not required at accessible parking spaces
- The ordinance includes provisions for accessible loading curbside

[Cycling Safety Ordinance Information](#)



# Project Area



# Project Details





# Quick-Build vs. Construction

## What is a Quick-Build Project?

- Quick-build projects allow us to make safety improvements more rapidly
- Our quick-build toolbox includes:
  - Pavement marking changes
  - Installation of flex posts
  - Changes to signage
  - Some modifications to signal timing

## Why a quick-build project?

- Only a Quick-Build project would be installed in time to meet our Spring 2022 deadline
- Quick-Build projects can be installed significantly faster than typical construction projects
- Capital Construction projects must be programmed into the City's 5-year Sidewalk and Street Reconstruction Plan for funding and coordination with utilities



# Bus Lanes

## Inbound

- 10 p.m. to 9 a.m.: Buses only
- 9 a.m. to 10 p.m.: Loading Zone

## Outbound

- Lane is in effect during all hours



# Transit Benefits

## **More Reliable Trips**

- More reliable trips allow riders to plan with more accuracy
- Drivers can serve more passengers with fewer buses, allowing the MBTA to add service

## **Faster Trips**

- Where we're proposing a dedicated bus lane, we expect travel times to improve



# Transit Accessibility

**Changes to improve transit accessibility were made as part of this project**

This includes:

- Relocation of a previously inaccessible bus stop (Shea Rd)
- Lengthening of existing bus stops to more easily accommodate level boarding
- Maintaining curbside boarding (I.e., no bike lane at bus stops)



# Separated Bike Lanes

## Separated Bike Lane Safety Benefits

- Dedicated space for biking
- Vertical separation between people on bikes and people in cars
- Shorter crossing distances for people walking

## Separated Bike Lane Other Benefits

- Increased comfort for people biking
- Increased comfort for people driving as they know where to expect people biking



# Accessible Parking

- Four new spaces are being added
  - Three directly on Mass Ave
  - One on Cameron Ave



# Accessible Parking - continued

Cameron Ave



Mass Ave at Clarendon Playground



Mass Ave at Fast Phil's Haircuts



# Project Benefits

- Improved safety and comfort for people walking and biking
- Improved access to the area by bus, bike and for people with aided-mobility

**In addition to meeting the requirements of the Cycling Safety Ordinance, this project meets the goals of numerous other city goals and policies, including:**

1. 1992 Cambridge Vehicle Trip Reduction Ordinance
2. 1993/2007 Cambridge Growth Policy
3. 2016 Complete Streets Policy
4. 2016 Vision Zero Policy
5. Envision Cambridge





# Project Installation Timeline

**September 14th:** 1st community meeting

**October 28th:** 2nd community Meeting

**November 8th:** Project implementation began

**November 12th:**

- Installation of bike lanes
- New roadway markings

**November 16th to Early December:**

- Bus lane painting
- Side-Street Parking changes
- Accessible parking sign changes

Work related to painting the bus lanes red was required to take place during the day due to weather conditions



# Implementation Impacts

**During this time, there were numerous temporary project impacts**

Specifically:

- Accessible parking spaces were painted before signage was installed
- Closure of the loading zone and bus lanes in both direction to allow for installation of red markings
- Additional traffic delays associated with roadway painting and striping



# Public Engagement



# Project Engagement Approach

The project team asked for public feedback in a variety of formats:

- Two public meetings, one month apart
- Community Office Hours
- Direct Engagement with business owners
- Comment by email and by phone
- Email blasts

More information is available on our project webpage

[Cambridgema.gov/mass-ave-dudley-alewife](https://www.cambridgema.gov/mass-ave-dudley-alewife)



# Accessible Parking Program in Cambridge

- Residents may request an accessible parking space outside their home
- In commercial areas, we attempt install on-street accessible parking close to high demand areas
- No existing spaces were removed or altered as a part of this project



# Accessible Parking and Future Projects

- We are re-examining our procedures for implementing accessible parking on streets where separated bike lanes are installed
- Future projects will include additional engagement with the Cambridge Commission for Persons with Disabilities (CCPD) and other stakeholders
- Projects will ensure we are adding accessible parking where it is needed
- Existing spaces will be retained or relocated



# Questions?