

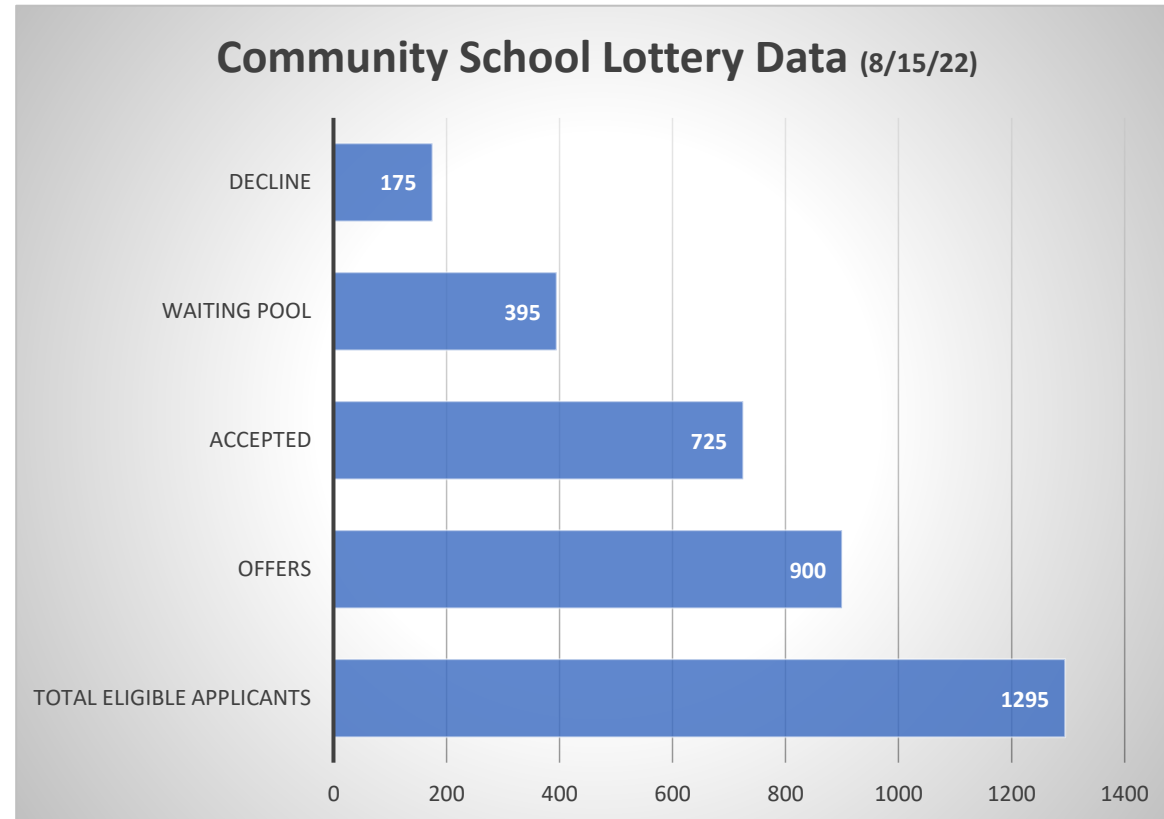
DHSP Community Schools Afterschool Lottery 2022-2023

Data and Update to Families

August 15, 2022

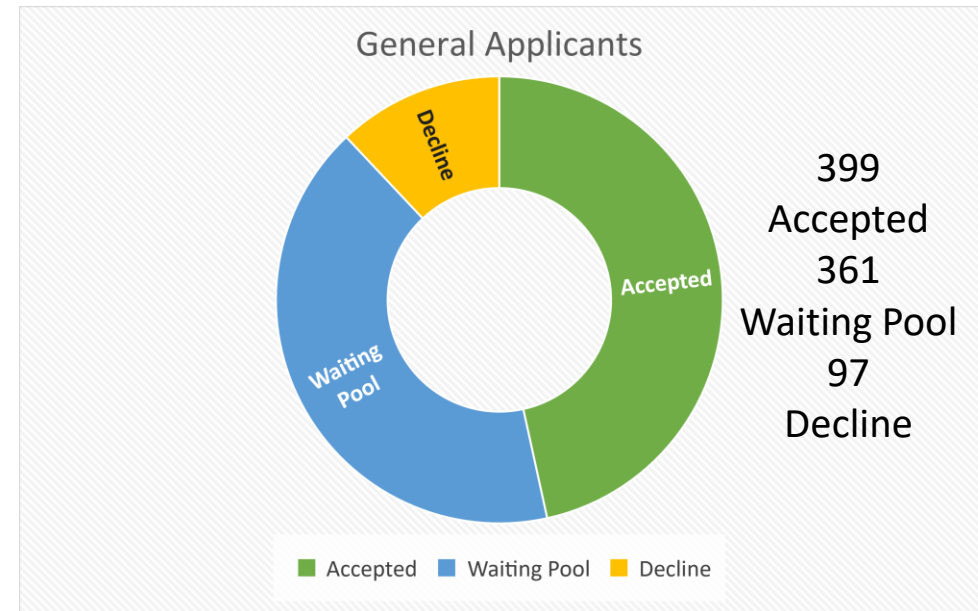
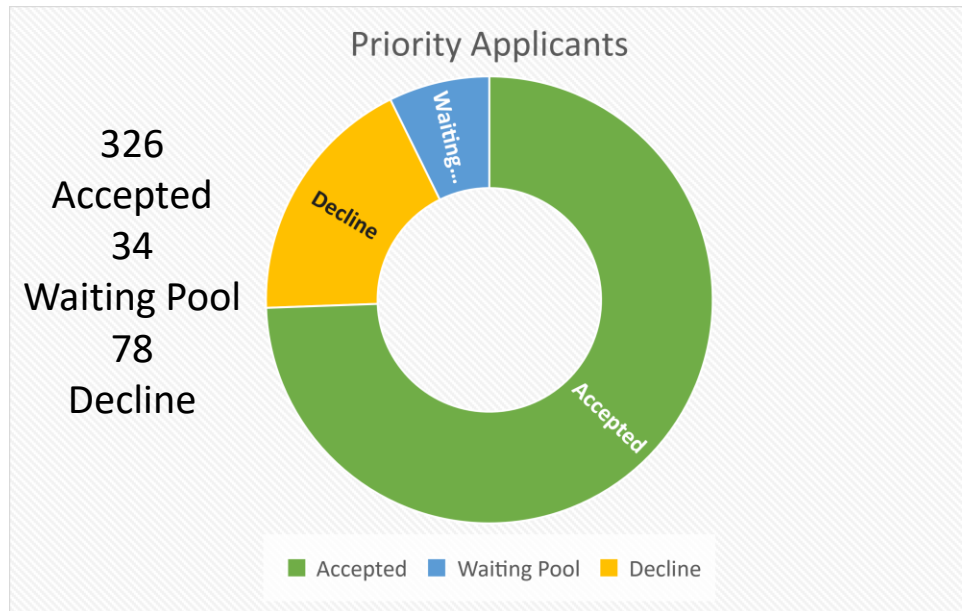
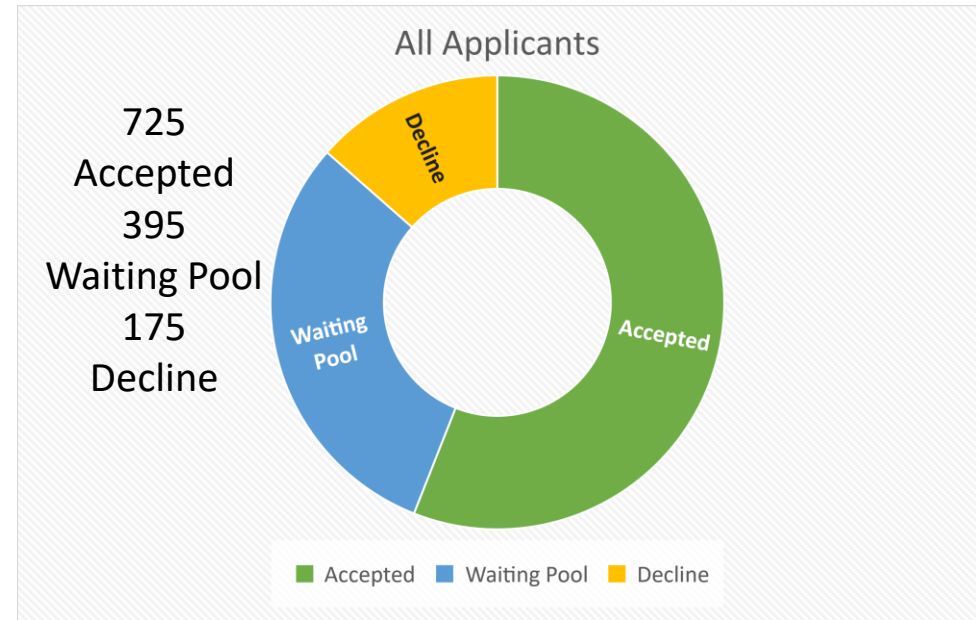
Community Schools Fall Lottery

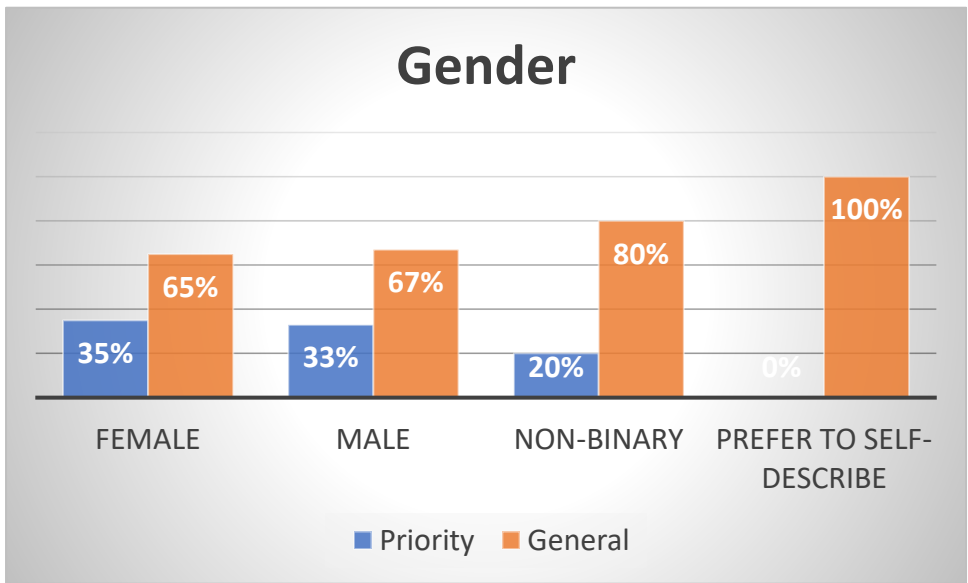
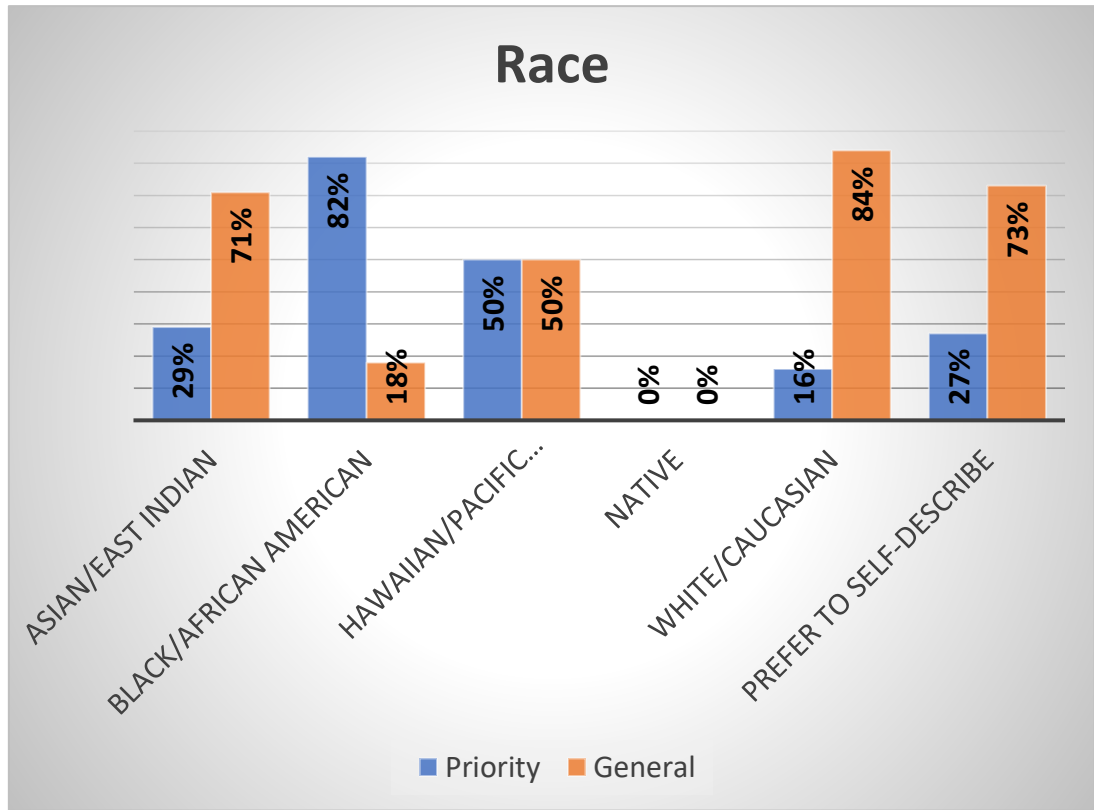
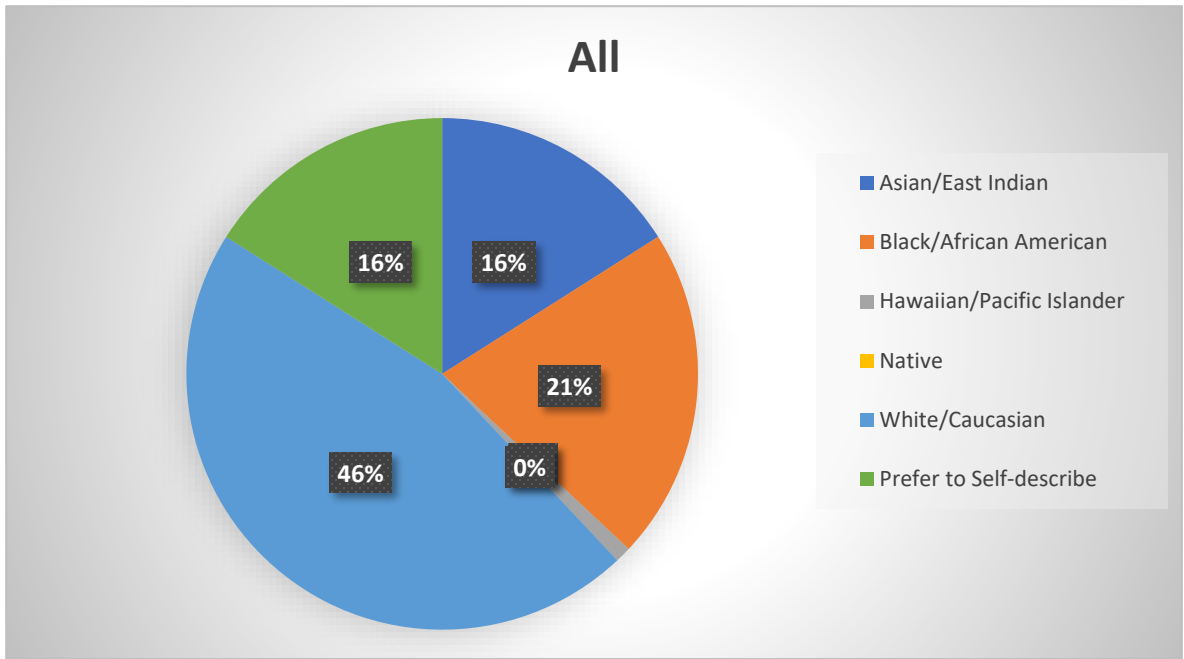
- 1295 Applicants
 - (1170 on-time)
- 900 total offers
- 725 accepted offers
- 395 in the waiting pool
- 175 declined



Updated August 15, 2022

Applications by Priority Status





Gender & Race Metrics

- 900 offers
 - 876 full offers (5/3/2 Day)
 - 24 partial offers

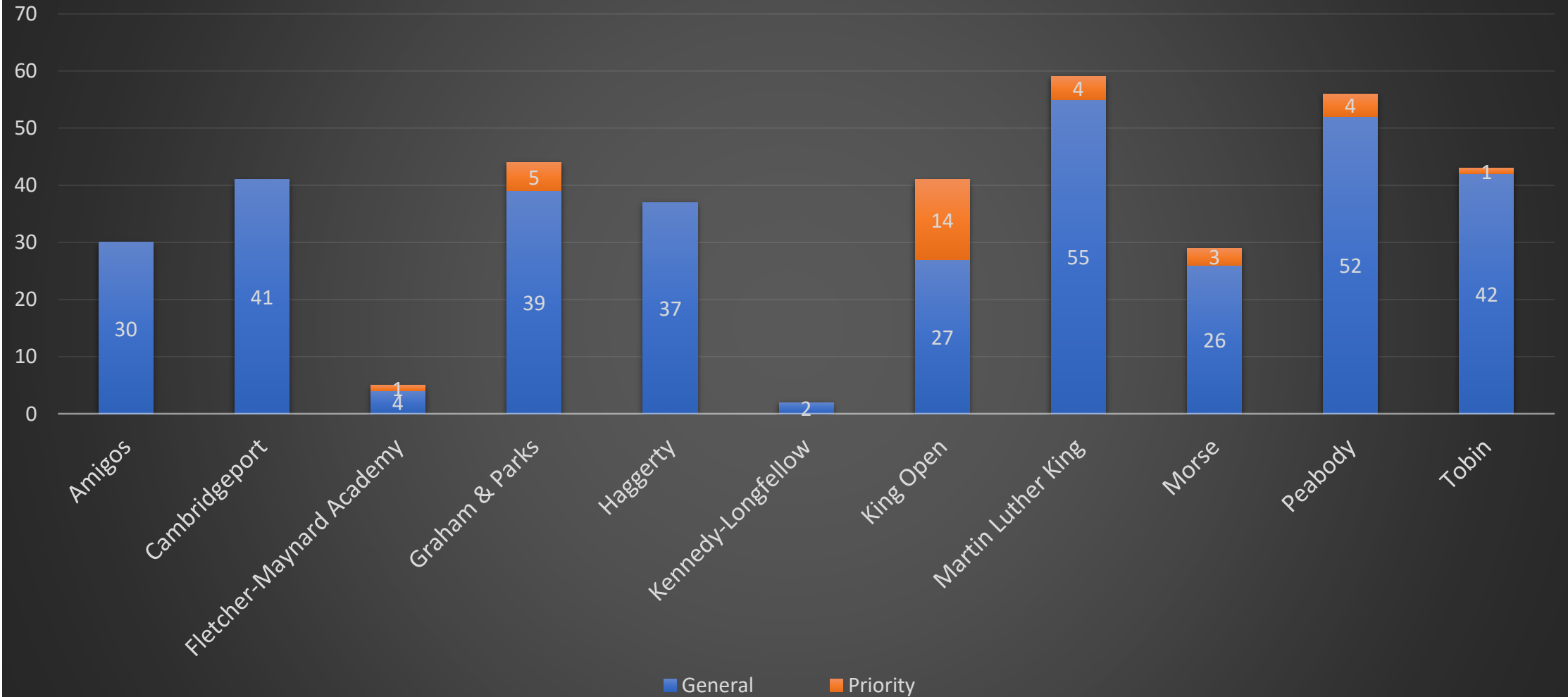
Full and Partial Offers

Offer Type	Days Requested	Days Offered	Accept	Decline	Offer Total
Partial Offer	5 days a week	2 days (Tue/Thur)	5	1	6
		3 days (Mon/Wed/Fri)	15	3	18
Partial Offer Total			20	4	24
Whole Offer	2 days (Tue/Thur)	2 days (Tue/Thur)	85	27	112
		3 days (Mon/Wed/Fri)	76	31	107
		5 days a week	544	113	657
Whole Offer Total			705	171	876
Grand Total			725	175	900

Updated August 15, 2022

Waiting Pool

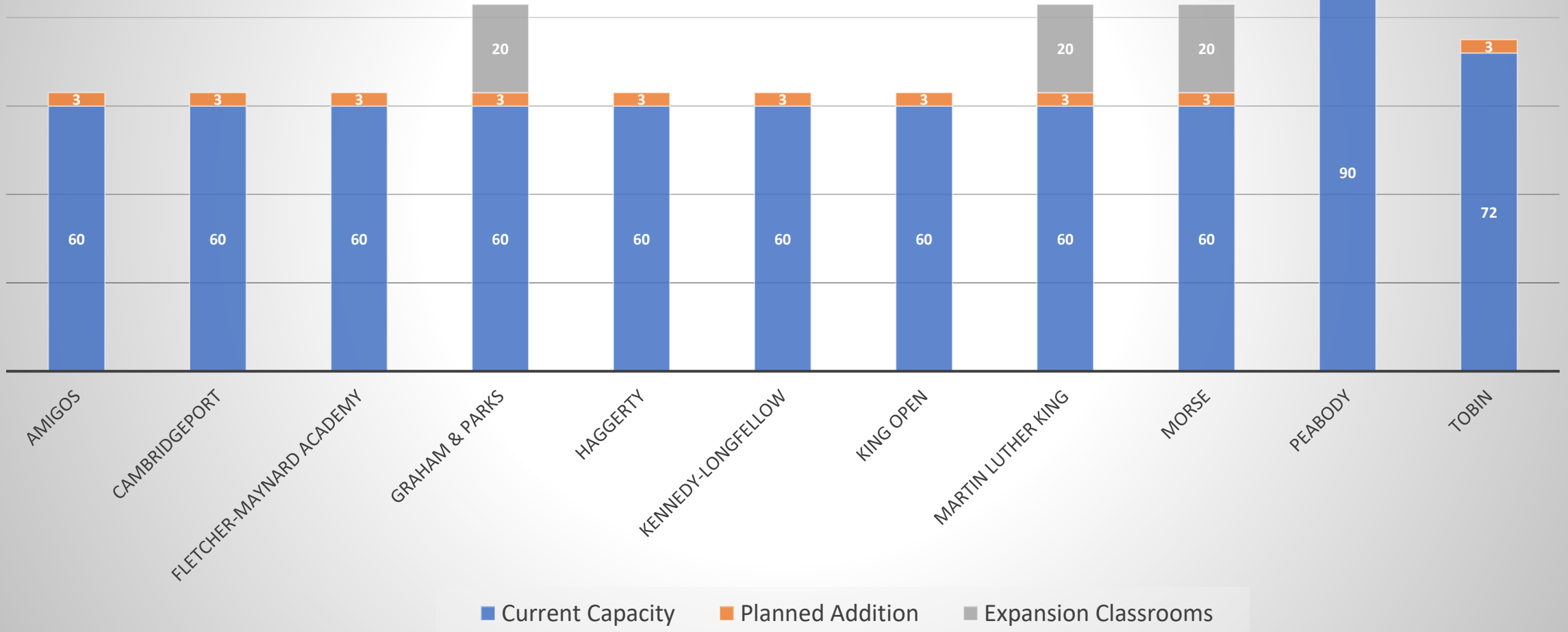
Waiting Pool by 1st Choice Site and Priority



Updated August 15, 2022

Site Capacities

Lottery Capacity June 2022	702
Additional seats (3 rd -5 th gr)	735
Expansion Classrooms	815

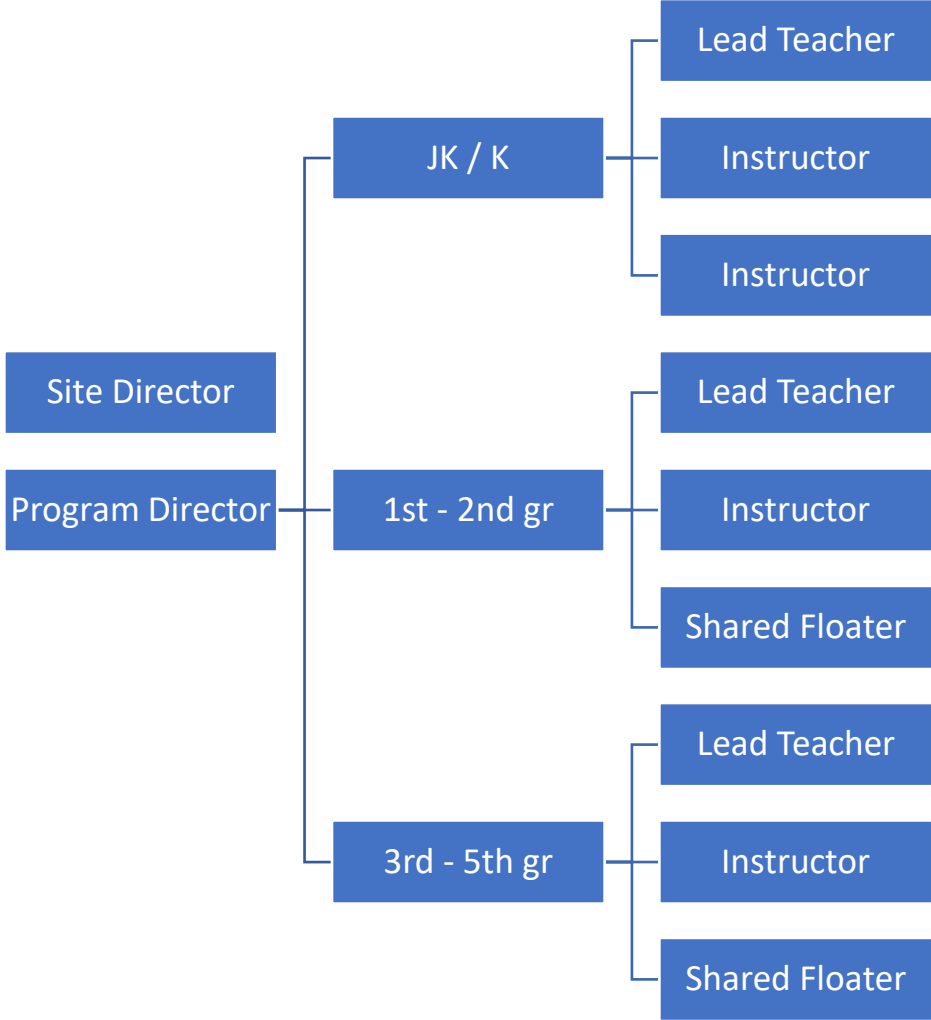


Updated August 15, 2022

Daily Program Staffing

based on capacity of 60 children

- 2 Administrators
- 3 Lead Teachers
- 4 Instructors
- 1 Shared Floater



DHSP Staffing Payrates

- PT Community Schools Instructor
\$22/hr.
- PT Community Schools Lead Instructor
\$24/hr.
 - PT Inclusion Specialist
 - \$22-\$24/hr.
- FT Community Schools Program Director
\$53,224-\$64,990/yr.
 - FT Community Schools Director
\$63,215-\$77,616/yr.

Outreach & Recruitment

- Raised PT pay rates to \$22/hr and \$24/hr
- Implemented a \$500 Retention Bonus
- Worked with Superintendent Greer to advertise to CPSD employees
- Posted positions of Handshake, Indeed and School Spring in addition to City's traditional outreach
- Posted on City's website, City and DHSP social media platforms, and Nextdoor
- Included as feature City's Daily Updates newsletter, sent to over 20,000 subscribers
- Worked with Public Library to distribute postcards at branches and to email to their networks
- Emailed 2200+ families about our job openings
- Postcard mailing to Cambridge Housing Authority households
- Communicated to our internal Workforce Development professionals in CEP, Next Up, Cambridge Works and MSYEP
- Contracted with a temp agency
- Implemented a \$500 staff referral bonus