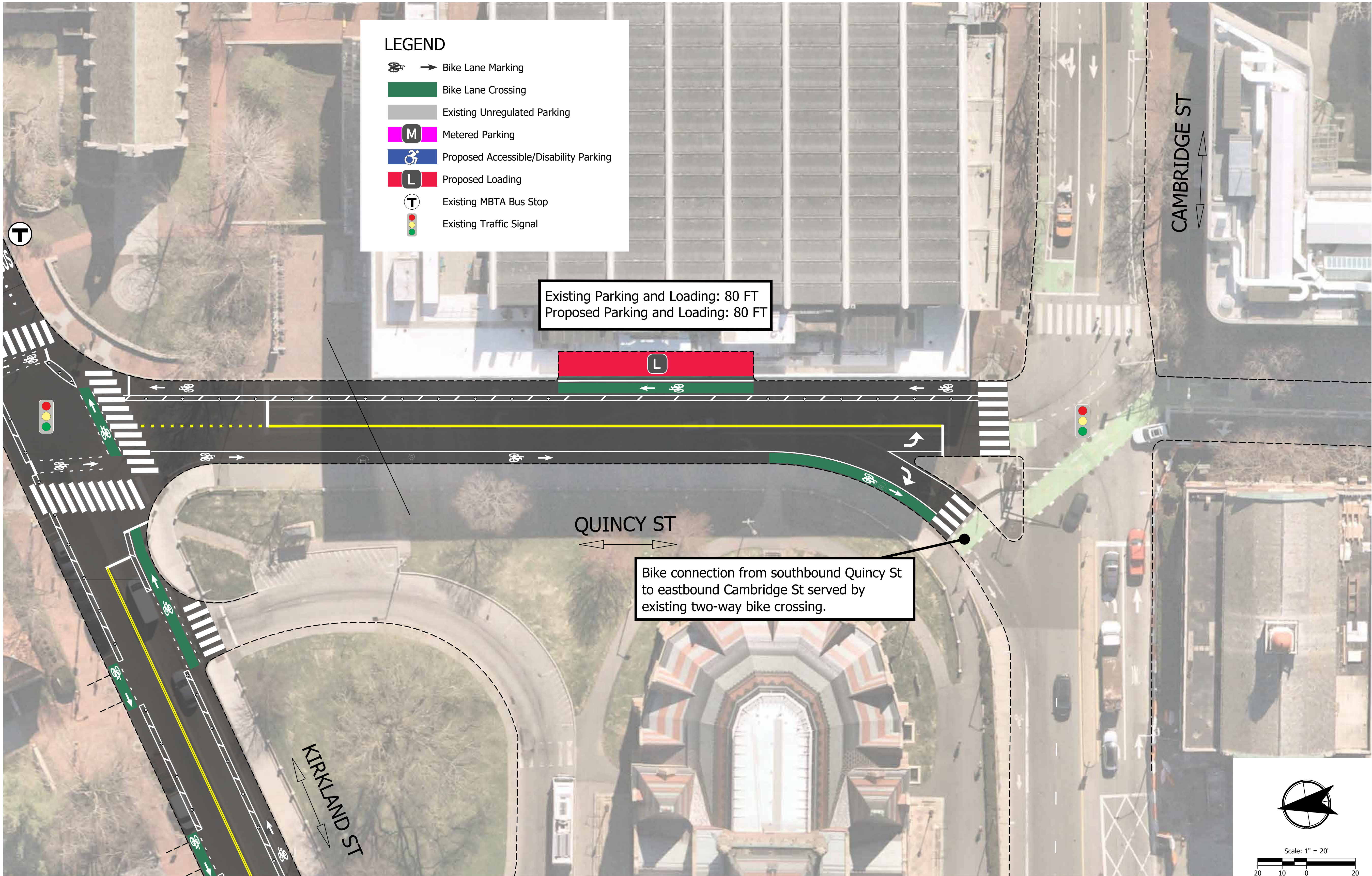


Plot Stamp: 1/15/2026 12:23:46 PM - Alec Donowitz
File: H:\27\27477 - Cambridge General Engineering Services\006 - Cambridge SBL Concept and Feasibility\design\Exhibits\Kirkland Quincy Roll Plan.dwg



DRAFT FINAL DESIGN - NOT FOR CONSTRUCTION

Department of Transportation	
CITY OF CAMBRIDGE	
KITTELSON & ASSOCIATES	ONE BEACON STREET, SUITE 2300 BOSTON, MA 02108 P 617.377.4000
Submission Date: 1/15/2026	
Drawn: RMH	Designed: RMH
Checked: CWA/JML	
PROJECT NO. 31580.001	
QUINCY STREET SEPARATED BIKE LANES	KIRKLAND STREET TO CAMBRIDGE STREET
DRAFT PLAN	