

Welcome!

Cambridge Cycling Safety Ordinance Advisory Group Meeting 3: May 23, 2023

MEETING AGENDA

- 4:00 Welcome
- 4:15 City Updates
- 4:25 Data Collection and Project Evaluation
- 5:20 What Does Success Look Like for This Group?
- 5:40 Next Steps
- 5:50 Public Comment
- 6:00 Adjourn

DISCUSSION GUIDELINES

- Respect all participants (members, staff, public)
- Bring as much eagerness to listen deeply for understanding as to speak
- Be curious about and open to different perspectives and sources of information
- Keep the focus on what we can create together
- Do not stereotype groups
- Focus on the issues, including raising perspectives and concerns from relevant stakeholder groups

City Updates

We're starting to adopt Group recommendations on signage:

- QR codes on posters and flyers
- Making parking impacts more clear
- Simplifying language

We're doing more thinking about a Phase 4/After Installation outreach stage.

Main Street Safety Improvement Project

Bike Lanes Coming in 2023 Some Parking Will Be Removed

**Wednesday, May 31
Community Meeting #2**

Zoom: 6 p.m. to 8 p.m.

We're adding separated bike lanes and making other safety improvements on Main Street between Mas Ave and Portland Street.

**Tuesday, June 6
Drop-In Open House**

Pisani Center (131 Washington St)
4:30 p.m. to 6:30 p.m.

At these events, learn about street design options and let us know what you prefer.

**Thursday, June 8
Drop-In Open House**

Intersection of Main Street/
Bishop Allen Drive
4:30 p.m. to 6:30 p.m.

We will have to remove a significant number of parking spaces for this project. Different designs will lay out bike lanes and parking spaces differently.

Can't attend? We'll post meeting materials, design options, and ways to give feedback online in June.

Project Website



[www.cambridgema.gov/
MainStreetSafety](http://www.cambridgema.gov/MainStreetSafety)

Join the Email List



Contact the Project Manager

Stephen Meuse
smeuse@cambridgema.gov
617-349-4713



City of Cambridge | Project Kickoff!

Mt Auburn St at Aberdeen Ave Intersection Safety Improvement Project

www.cambridgema.gov/mtauburn-aberdeen

Cambridge is planning to make changes on Mt. Auburn Street between Belmont Street and Brattle Street to address safety for all users.

Website



Email Sign-Up



What to Expect:

- Dedicated turn lanes from Mt. Auburn Street to Homer Avenue and Aberdeen Avenue
- Better bike connections along Mt. Auburn Street between Brattle Street and the Cambridge-Watertown Greenway
- Extension of the existing eastbound bus lane to Homer Avenue
- New signal timing and traffic signal equipment

Join us Wednesday, May 24th for a drop-in Community Open House:

Where: Collins Library Branch (64 Aberdeen Ave) Stop by to chat with project staff and see draft project designs.

When: 4:30 p.m. to 6 p.m. This is the first opportunity to learn more about this project. **We'll email the mailing list about future events!**

Contact Us and Ask Questions

Andreas Wolfe
awolfe@cambridgema.gov
617-349-9162



Accessibility

People with disabilities may request accommodations by contacting Traffic, Parking, and Transportation at 617-349-4700 (voice), 711 (relay), or tpt@cambridgema.gov.

Main Street Safety Improvement Project

Bike Lanes Coming Soon Some Parking Will Be Removed

Open House: Wednesday, April 26, 2023

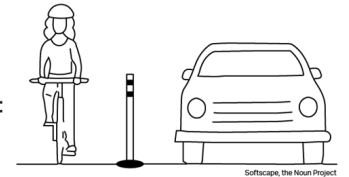
4:30 p.m. to 6:30 p.m.

Pisani Center: 131 Washington St
Including pizza and light refreshments



Cambridge is making safety improvements to Main Street between Mass Ave and Portland Street. This includes the area in front of Newtowne Court. We will:

- add separated bike lanes
- improve crosswalk visibility
- address safety concerns at intersections
- adjust parking and loading areas to better serve residents, businesses, and visitors



To make space for these safety improvements, parking will be removed on one side of the street.

We do not have a plan or design yet and we want to hear from you!

- How do you currently use Main Street?
- Do you have safety concerns while walking, biking, or driving?
- What types of parking or loading do you use?

Stop by any time between 4:30 p.m. and 6:30 p.m. to talk to City staff, ask questions, and tell us what we can improve on Main Street.

Learn more + give online feedback:

www.cambridgema.gov/MainStreetSafety

Contact the Project Manager

Stephen Meuse | smeuse@cambridgema.gov | 617-349-4713

Accessibility

People with disabilities may request accommodations. Contact Traffic, Parking, + Transportation at 617-349-4700 (voice), 711 (relay), or tpt@cambridgema.gov.



Project Updates

Third Annual Cycling Safety Ordinance Progress Report

- **3.58 miles** of separated bike lanes between May 1, 2022 and April 30, 2023
- **4.73 miles** of separated bike lanes planned between May 1, 2023 and April 30, 2024

Current Projects:

- **Brattle Street:** Construction on pedestrian islands started. Milling and repaving streets in June.
- **Hampshire Street:** Phase 3 (Final Feedback + Installation) begins in June.
- **Huron Ave and Cushing Plaza Improvements:** Utility and drainage work continues.
- **Main Street:** Phase 2 (Draft design presentation + feedback) begins May 31.
- **Mass Ave Partial Construction Project:** Working Group had its first meeting on May 18.
- **Mt. Auburn Street at Aberdeen Avenue Intersection Safety Improvement Project:** Project launched and designs posted. Introductory open house on May 24.
- **River Street Infrastructure and Streetscape Project:** Crews are digging test pits to check below-ground infrastructure.

Learn more at www.cambridgema.gov/cso-projects.

Data collection and project evaluation

Data Collection

- Crash rates: Are people safer?
- Bike and pedestrian counts: Are people using these facilities?
- Transit travel times: Are we moving more people faster?
- Vehicle speeds: Are people driving slower + safer?
- Vehicle travel times: What is the effect on single-occupancy vehicles?

*Note: The COVID-19 pandemic had an impact on transportation patterns that we are still experiencing. It's difficult to compare data from the past few years to pre-pandemic numbers.

Data Source: 2020 Bike Plan Data

- Includes data surveys on:
 - Bicycling habits
 - Comfort levels
 - Barriers to bicycling
- Bicycle traffic counts
- Crash data analysis for crashes involving bikes
 - Crash rates
 - Crash locations
 - Crash types
 - Injury severity

CHAPTER 3

INFORMATION AND REPORTING

Upcoming Data Update

A new report will compare data in the 2020 Bike Plan with updated numbers.

- This will help us understand how the CSO impacts Cambridge cycling citywide
- Current Status: Procuring a consultant
- Timeline TBD

Million Bicycle Miles Traveled (BMT) and Bicycle Crashes (2004-2019)

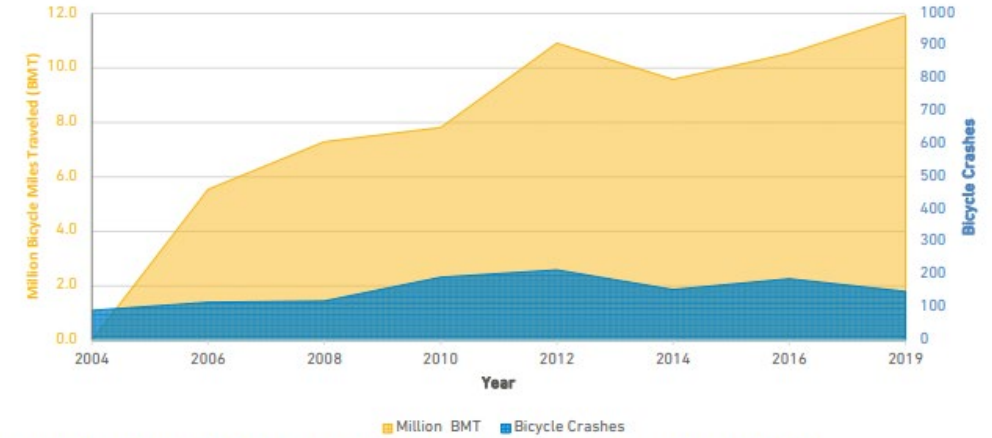
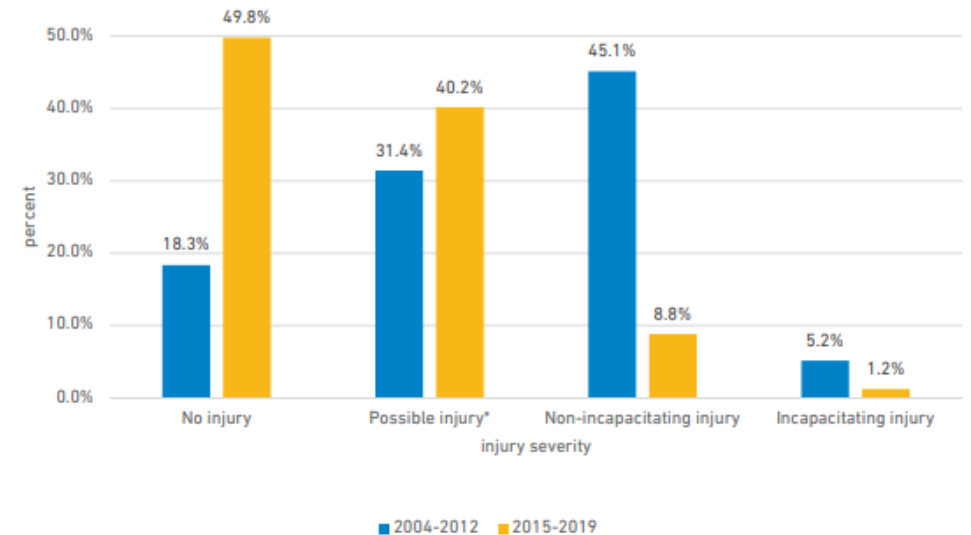


Figure 3.19: Million Bicycle Miles Traveled (BMT) and Number of Bicycle Crashes (2004-2019)

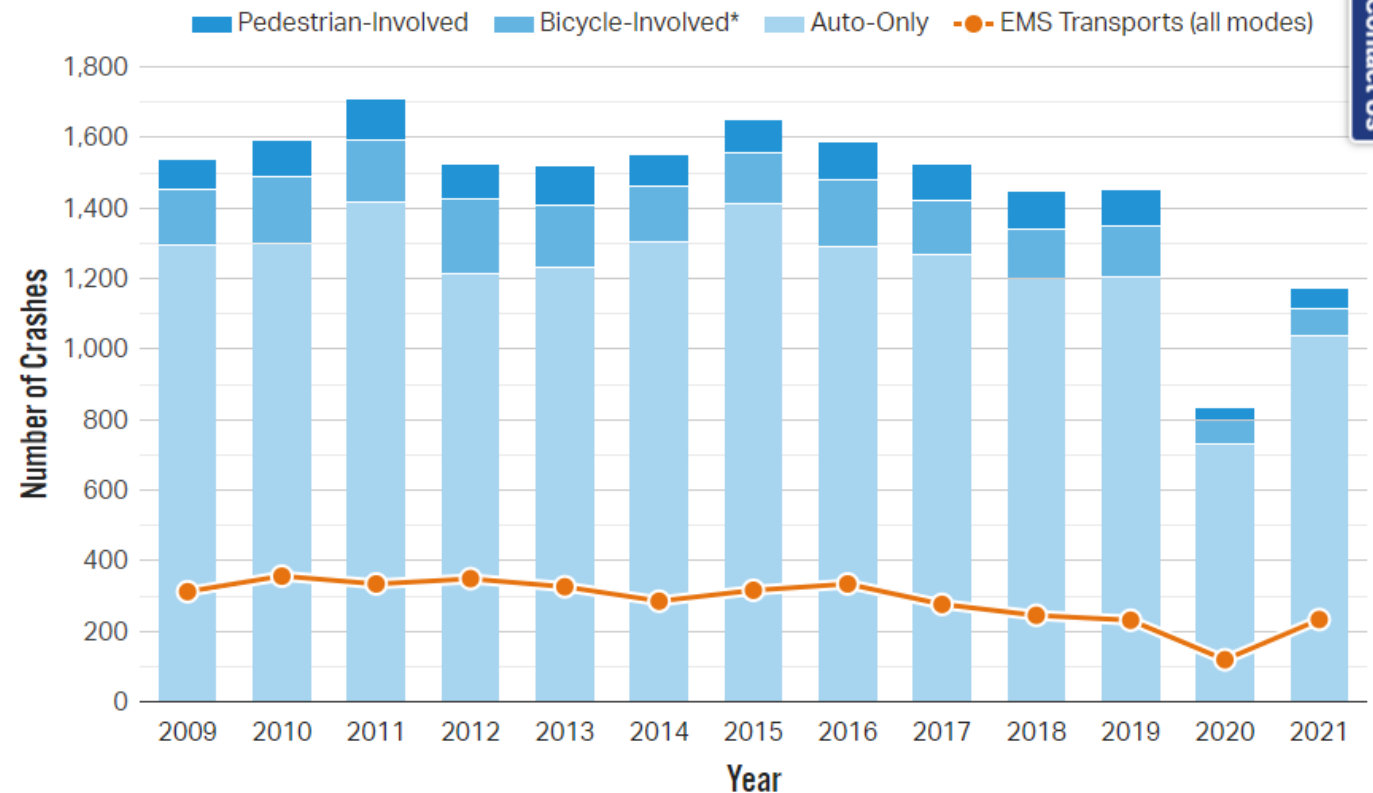
Injury Severity for Bicyclists in Crashes (2004-2012 vs 2015-2019)



Data Source: Crash Reports

- Cambridge Police Department publishes crash data involving cars, bicycles, and/or pedestrians online
- This data can be difficult to interpret: takes time to go through and make data uniform.
- Annual Crime Report includes summary of crashes each year (2022 report coming soon).
- We use EMS transports to the hospital to understand numbers of crashes resulting in injuries, but hard to understand severity of injuries
- Find graph + data at www.cambridgema.gov/visionzero

Crashes Per Year By Mode + EMS Transports Per Year (All Modes)



Project Evaluation

	Cambridge Street (quick build, 2017)	Brattle Street (quick-build, 2017)	Western Avenue (construction, 2012-2016)	Mass Ave from Dudley to Alewife Brook Parkway Bus/Transit Evaluation (quick-build, 2021)
Time between project and evaluation	2 years	2 years	3 years	1.5 years
Bicycle Counts	x	x	x	
Pedestrian Counts	x		x	
Vehicle Counts	x		x	
Transit Rider Counts			x	x
Vehicle Speeds	x		x	
Parking Utilization	x	x	x	
Crash Data	x	x	x	
Pedestrian and Bicyclist Demographic Study			x	
Pedestrian Yield Study			x	
Post-Implementation Survey	x	x		
Intercept Survey	x	x		
Travel Time Analysis (vehicles)			x	x
Travel Time Analysis (MBTA buses)			x	x

Surveys: Questions We've Asked

- How do you travel on the street (walking, biking, transit, ride-hail, driving)
- How often do you travel on the street? Has that changed since the project?
- What is your opinion about the new design?
- Comfort level while walking, biking, taking transit, driving.
- Demographic questions: Age, gender, race, neighborhood

“After” Data Takes Time

- Previously, we have conducted evaluations about two years after a project is complete
- Usually, it takes at least four to six months for new traffic patterns to emerge after major changes
- To get the best crash data, best practice is to compare three years of data before implementation to three years after
- COVID-19 impact on data

Upcoming Report: Cycling Safety Ordinance Economic Development Study

(Expected Publication: Fall 2023)

- Goal: To understand the effects of separated bike lane infrastructure on nearby businesses
- Challenges with designing the study:
 - Limited number of comparable studies on the impacts of bike infrastructure on retail sales in North American.
 - Ideal source would be actual retail transaction data: state doesn't release detailed enough data
 - Difficult to get the block/street specific data that could be used to analyze bike project impacts
- Data will include:
 - Retail rent levels and occupancy rates,
 - Traffic counts and parking counts
 - City-wide employment, wage data
- Business survey will launch May 2023 with direct mail to all known ground-floor businesses.
 - Follow-up to non-respondents
 - Questions include: changes to sales/revenue since 2019, whether a bike facility was installed nearby, perceived impact

Next Steps on Project Evaluation

- We are preparing to evaluate some more of our Cycling Safety Ordinance Projects.
- We want your input on how best to evaluate these projects going forward.
 - What do you think worked well about past evaluations?
 - What else should we consider looking at?
 - What core data should we always assess?

What does success look like for the AG?

- How will we evaluate the effectiveness of this process?
- How should we capture and share the progress this group makes?
- Are we on the right track to work towards these goals?

NEXT STEPS

- ❑ What would you like to cover in upcoming meetings?
 - ❑ *Wave 4/Post-installation phase*
 - ❑ *Continue to look at engagement and outreach strategies:*
 - ❑ *How to effectively connect with harder-to-reach stakeholders*
 - ❑ *Messaging about the overall plan and goals of the CSO*
- ❑ Next meeting: Tentative – Thursday June 29, 4-6 PM
- ❑ Future meeting timing: summer schedules and preferred times/dates

Check out the CSO Advisory Group website for resources and info:
camb.ma/cso-advisory-committee

PUBLIC COMMENT

Public comments welcome

- Share thoughts in Q&A or verbally
- To comment verbally, raise your hand (virtual or in-person) or signal interest in Q&A window
- Limit comments to 2 minutes; may need to adjust if many speakers

Please keep all comments...

- On-point
- Respectful
- Focused on issues (not individuals)