

The Public Health Response to the COVID-19 Pandemic in Cambridge

COVID-19 UPDATE

CAMBRIDGE CITY COUNCIL

JANUARY 10, 2022



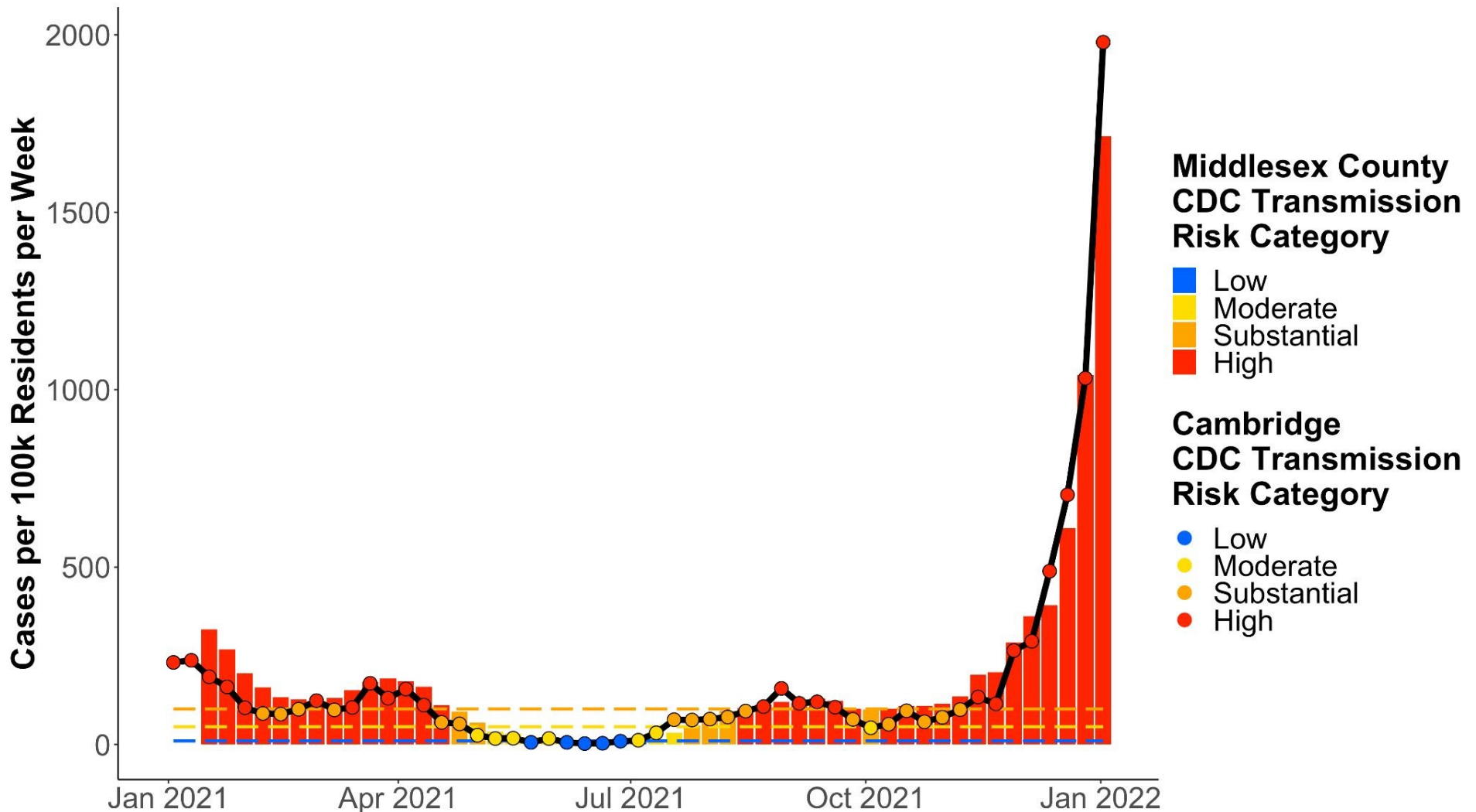
Cambridge
Public Health
Department



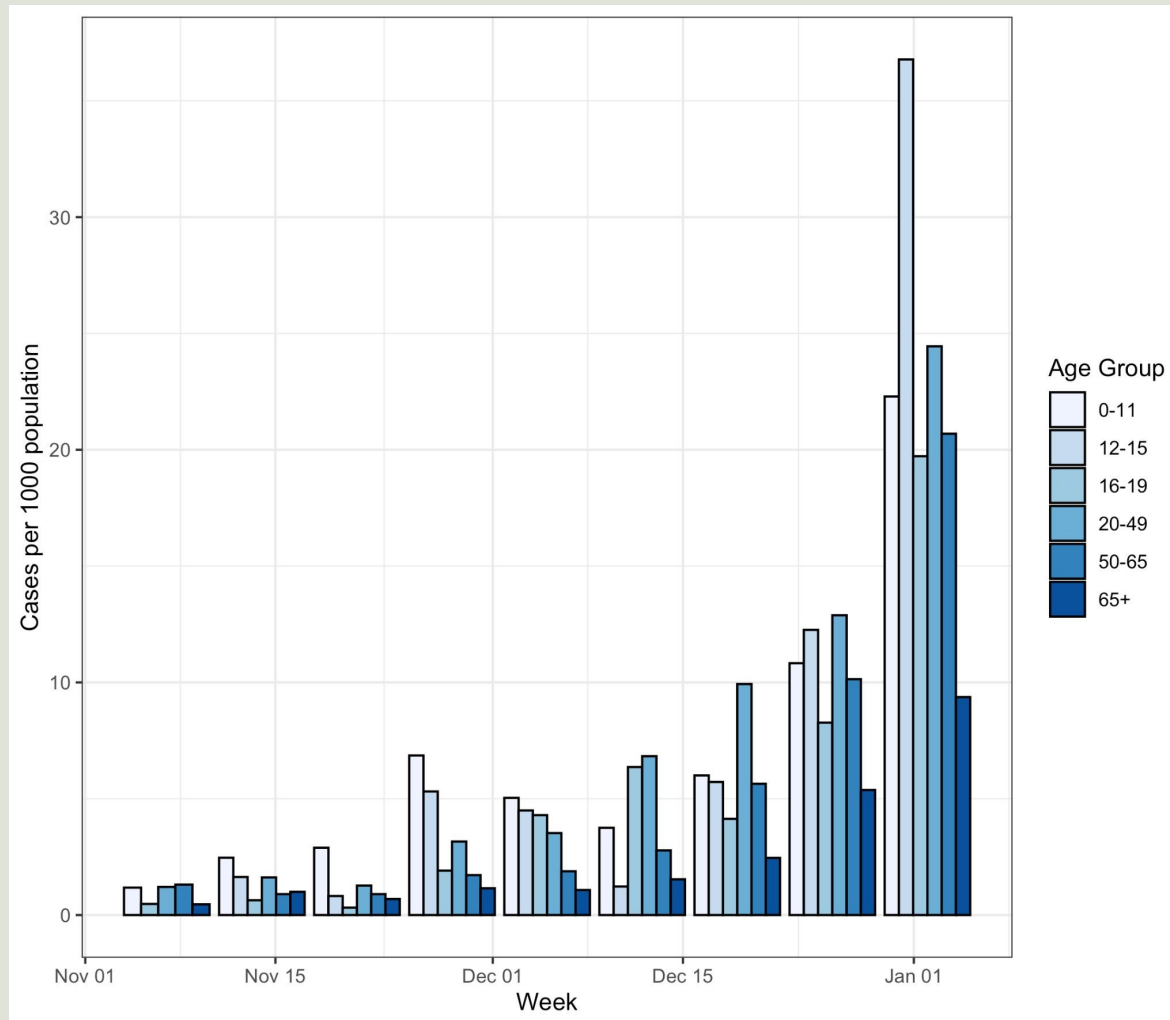
CHA Cambridge
Health Alliance



Middlesex County and Cambridge Cases by Risk Category



Cambridge Case Rates by Age



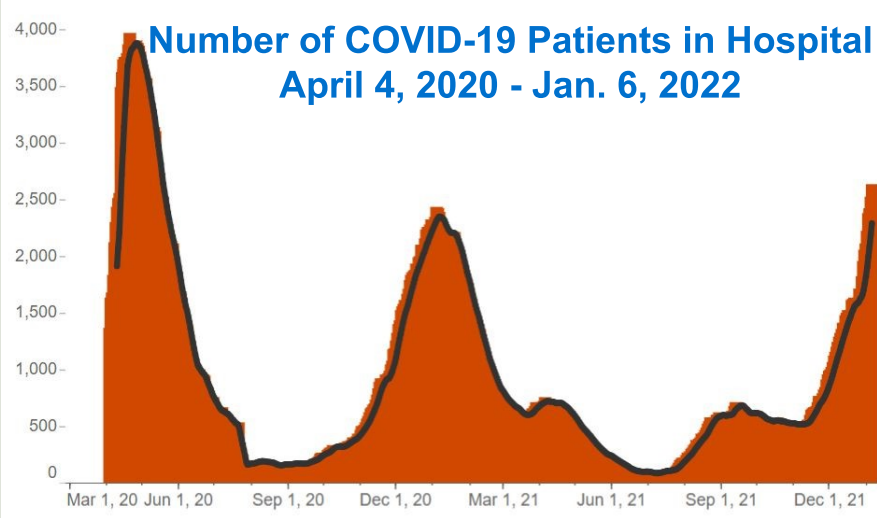
Omicron Update

- Omicron variant is driving the January surge.
 - MDPH/Broad Institute estimate: Omicron accounts for over 95% of MA cases.
- A growing body of evidence suggests Omicron is **more transmissible** but causes **less severe illness** than Delta.
- Vaccination, especially boosters, is helping prevent severe illness and death.
- The high volume of new infections **are challenging hospitals** in MA and U.S.

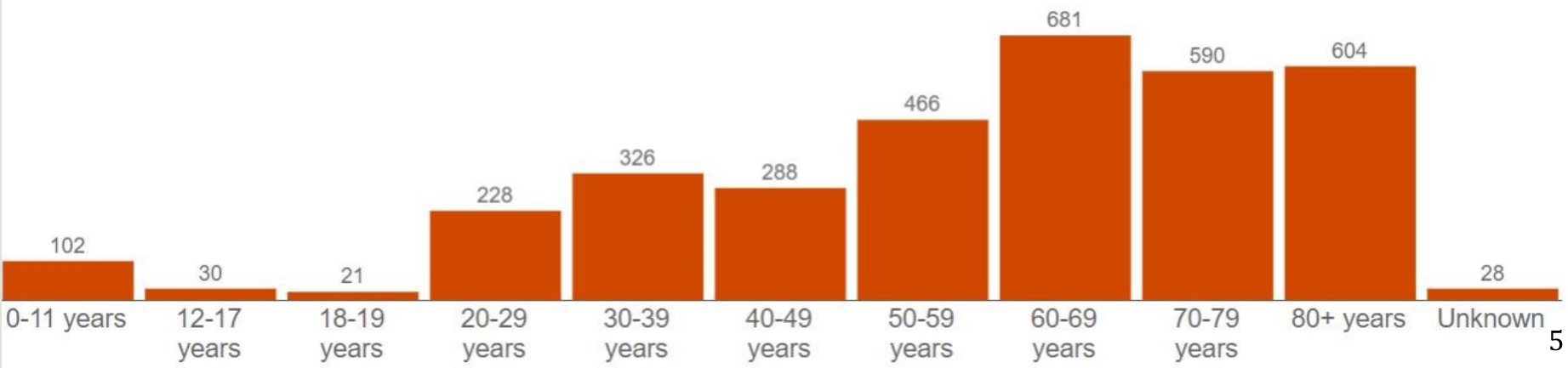
MA COVID-19 Hospitalizations

On Jan. 6, there were **2,637** patients hospitalized for COVID-19 in Massachusetts.

Of those people, **1,106** (42%) were reported to be fully vaccinated.



Number of Massachusetts Hospital Admissions by Age—Past 2 Weeks – Dec. 19, 2021 to Jan. 1, 2022



Community Impacts

- Hospitals in Boston/Metro West:
 - Non-ICU beds: ~94% occupied
 - ICU beds: 80%-90% occupied.
- Child Care Programs/ Schools
- Airline Travel
- Retail/Other industries



Government Response

National

- CDC shortened isolation and quarantine periods, in part to address continuity of operations in U.S.
- CDC approved booster vaccine for 12-15 year olds.

State

- The state activated the Massachusetts National Guard to support hospitals and transport systems.

Local

- Vaccine and booster clinics
- Increased PRC testing
- Expanded indoor mask mandate
- Cancellation of in-person City public events
- Public health recommendations

CPHD Recommendations

Employers

- Encourage remote work where possible to protect your workforce.

Individuals

- Get vaccinated and boosted.
- Wear high quality masks (KF94, KN95, N95) when indoors
- Reconsider hosting or attending indoor social gatherings
- Get tested as needed.
- Follow isolation and quarantine guidance
 - CPHD strongly recommends negative rapid test before ending isolation after 5 days.

COVID-19 Vaccine Clinics

City Public Vaccine Clinics (Jan. 3 & 6)

Moderna vaccines & boosters administered

CPHD Public Clinic @ CRLS (Jan. 5)

292 Pfizer vaccines & boosters administered

Senior Housing (Jan. 7-8)

~170 vaccines & boosters administered

UPCOMING

City Employees (Jan. 12-13)

City Moderna Clinics (Jan. 10 & 13)

Shelter Vaccination Clinics (Jan. 13 & 14)