

City of Cambridge Board of Election Commissioners

51 Inman Street, Cambridge, MA 02139 • Phone: 617-349-4361  
Fax: 617-349-4366 • Email: [elections@cambridgema.gov](mailto:elections@cambridgema.gov)

**Commissioners:**  
Ethridge A. King  
Larry W. Ward  
Charles J. Marquardt  
Victoria A. Harris

**Executive Director:**  
Tanya L. Ford

**Assistant Director:**  
Lesley Waxman

Residential Customer  
Cambridge, MA

PRESORTED STD  
US POSTAGE  
PAID  
CAMBRIDGE MA  
PERMIT NO 58215

## WHAT IS REPRECINCTING?

New ward and precinct boundary lines are drawn to reflect changes in the City's population and to anticipate the needs of the City's election system for the next decade. The population of Cambridge increased by 12.6% between 2010 and 2020, but the changes were not evenly distributed throughout the city. The Board of Election Commissioners held multiple public meetings to finalize a reprecincting plan to redraw the precinct borders to balance the population among the precincts, as required by state law. Cambridge now has 11 wards, 33 precincts, and 9 sub-precincts. Learn more at [cambridgema.gov/pollinglocations](http://cambridgema.gov/pollinglocations)

## WHAT IS REDISTRICTING?

The State Legislature is responsible for redistricting, which divides the state into districts for Congress, State Senate, State Representative, and Governor's Council. You will be voting on representatives in your new district beginning with the Fall 2022 elections. During this process, the City of Cambridge was divided into 2 Congressional Districts, 3 State Senate Districts, 6 State Representative Districts, and 2 Governor's Council Districts. To find your district information, please visit [cambridgema.gov/pollinglocations](http://cambridgema.gov/pollinglocations)

## WHAT ARE SUB-PRECINCTS?

In 9 of Cambridge's voting precincts, the legislative districts do not line up with the ward and precinct boundaries, which means that some precincts are in more than one legislative district. Voters who live in one of these "sub-precincts" will be listed on a separate voting list and provided with a different ballot than other voters in the precinct for state elections. Sub-precincts are indicated with the letter "A" (for example, Ward 1 Precinct 2A). Learn more at [cambridgema.gov/pollinglocations](http://cambridgema.gov/pollinglocations)

### MULTILINGUAL RESOURCES:



বাংলা



हिन्दी



عربي



ESPAÑOL



中文



PORTUGUÊS



KREYÒL AYISYEN



ENGLISH



# CAMBRIDGE ELECTION COMMISSION

## Guide to Ward and Precinct Changes



Every 10 years after the US Census is completed, new ward and precinct boundaries are drawn to reflect changes in our population. This is an important process that takes place, with important changes that will affect many Cambridge voters. Please read through this guide to learn about the process and find your new ward and precinct so you know where to go to cast your ballot during the next election. More information is available online at [www.cambridgema.gov/elections](http://www.cambridgema.gov/elections) and will be mailed to voters as we get closer to the November 2022 election.

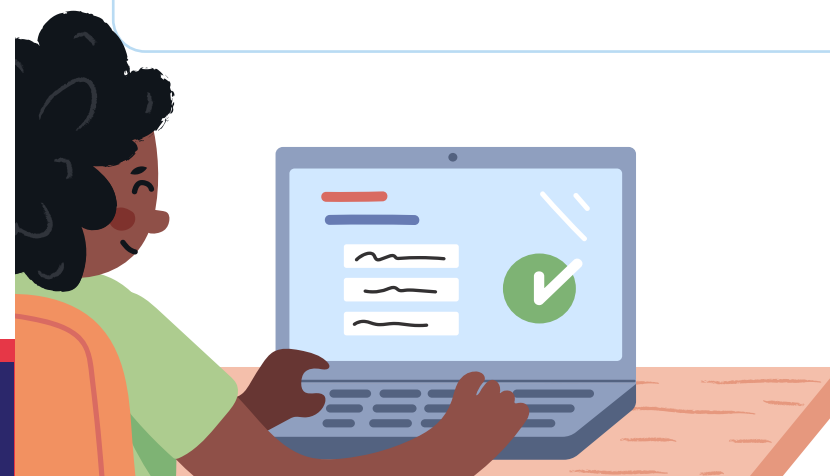
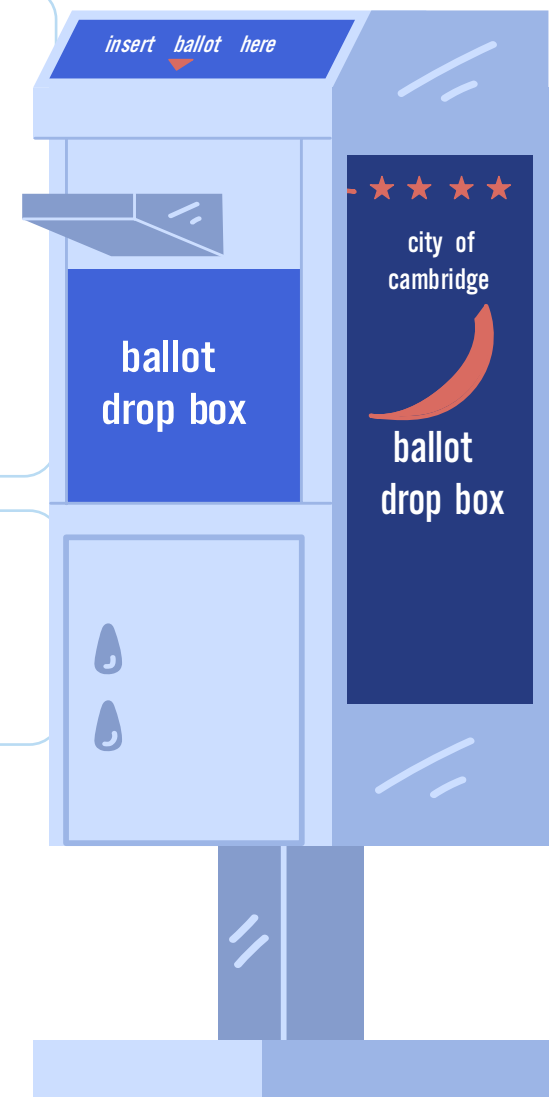


### FINDING MY NEW WARD AND PRECINCT:

- ▶ Visit [www.cambridgema.gov/pollinglocations](http://www.cambridgema.gov/pollinglocations)
- ▶ Email [elections@cambridgema.gov](mailto:elections@cambridgema.gov)
- ▶ Call the Election Commission at 617-349-4361



**Voter Notification Cards with your ward and precinct information and polling location will be mailed before the November 8th General Election.**



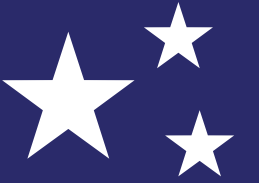




To find your specific  
polling location and  
precinct information visit  
[www.cambridgema.gov/  
pollinglocations](http://www.cambridgema.gov/pollinglocations)



# CITY OF CAMBRIDGE WARDS AND PRECINCTS



## POLLING LOCATIONS

### 1-1 222 JACOBS STREET

Conference Center

### 1-2 M.I.T. KRESGE AUDITORIUM

Behind Stratton Center, 70 Massachusetts Avenue

### 1-2A M.I.T. KRESGE AUDITORIUM

Behind Stratton Center, 70 Massachusetts Avenue

### 1-3 MILLERS RIVER APARTMENTS

15 Lambert Street, Cambridge Street Entrance

### 2-1 VALENTE BRANCH LIBRARY

826 Cambridge Street, Side Entrance on  
Berkshire Street

### 2-2 TRUMAN APARTMENTS

25 Eighth Street, Community Room, Thorndike Street  
Entrance

### 2-3 O'CONNELL BRANCH LIBRARY

48 Sixth Street, Corner of Thorndike Street, Rear  
Entrance

### 2-3A O'CONNELL BRANCH LIBRARY

48 Sixth Street, Corner of Thorndike Street, Rear  
Entrance

### 3-1 PISANI CENTER

131 Washington Street

### 3-2 MOSES YOUTH CENTER

243 Harvard Street, Lower Level, Rear Entrance

### 3-3 CITY HALL

795 Massachusetts Avenue, Driveway Entrance

### 3-3A CITY HALL

795 Massachusetts Avenue, Driveway Entrance

### 4-1 MORSE SCHOOL

40 Granite Street, Main Entrance

### 4-2 SAINT PETER'S EPISCOPAL CHURCH

838 Massachusetts Ave, Entrance on Sellers Street

### 4-2A SAINT PETER'S EPISCOPAL CHURCH

838 Massachusetts Ave, Entrance on Sellers Street

### 4-3 MARTIN LUTHER KING, JR. SCHOOL

102 Putnam Avenue, Playground Gym Entrance

### 5-1 SALVATION ARMY HEADQUARTERS

402 Massachusetts Avenue

### 5-2 M.I.T. KRESGE AUDITORIUM

Behind Stratton Center, 70 Massachusetts Avenue

### 5-3 MORSE SCHOOL

40 Granite Street, Main Entrance

### 6-1 CITY HALL ANNEX

344 Broadway, Conference Room, Second Floor

### 6-1A CITY HALL ANNEX

344 Broadway, Conference Room, Second Floor

### 6-2 CAMBRIDGE RINDGE & LATIN SCHOOL

459 Broadway, Media Cafeteria, Cambridge Street Entrance

### 6-3 CAMBRIDGE RINDGE & LATIN SCHOOL

459 Broadway, Media Cafeteria, Cambridge Street Entrance

### 7-1 BALDWIN SCHOOL

Community Floor, 85 Oxford Street, Sacramento  
Street Entrance

### 7-2 BALDWIN SCHOOL

Community Floor, 85 Oxford Street, Sacramento  
Street Entrance

### 7-2A BALDWIN SCHOOL

Community Floor, 85 Oxford Street, Sacramento  
Street Entrance

### 7-3 GUND HALL

48 Quincy Street, Cambridge Street Entrance

### 8-1 GRAHAM AND PARKS SCHOOL

44 Linnaean Street., Playground Entrance

### 8-2 FRIENDS CENTER

5 Longfellow Park, Community Room

### 8-3 MARTIN LUTHER KING, JR. SCHOOL

102 Putnam Avenue, Playground Gym Entrance

### 9-1 LEXINGTON AVENUE FIRE HOUSE

167 Lexington Avenue

### 9-2 CAMBRIDGE WATER DEPARTMENT

250 Fresh Pond Parkway

### 9-3 RUSSELL YOUTH CENTER

680 Huron Avenue, Second Floor

### 10-1 PEABODY SCHOOL GYM

70 Rindge Avenue, Rear Entrance

### 10-1A PEABODY SCHOOL GYM

70 Rindge Avenue, Rear Entrance

### 10-2 GRAHAM AND PARKS SCHOOL

44 Linnaean Street., Playground Entrance

### 10-3 CADBURY COMMONS

66 Sherman Street, Patio Entrance on Cadbury Road

### 11-1 RESERVOIR CHURCH

170 Rindge Avenue, Rear Entrance

### 11-1A RESERVOIR CHURCH

170 Rindge Avenue, Rear Entrance

### 11-2 RESERVOIR CHURCH

170 Rindge Avenue, Rear Entrance

### 11-3 BURNS APARTMENTS

50 Churchill Avenue, Community Room

### 11-3A BURNS APARTMENTS

50 Churchill Avenue, Community Room

## LEGEND

- Precinct Boundaries
- Sub-Precinct Boundaries



Map prepared by Cambridge GIS  
July 2022