

02 PROPOSED REDEVELOPMENT

- » HARVARD UNIVERSITY NATIVE AMERICAN PROGRAM
- » LOCATION - 15 MT AUBURN
- » PLANNING PRINCIPLES / STRATEGIES
- » PROPOSED DESIGN
- » PROJECT SUMMARY

Multiple sites were considered during 2 feasibility studies



PLANNING PRINCIPLES / STRATEGIES

1. WHAT DOES A BUILDING LOOK LIKE FOR HUNAP, THAT...

- Is on a tight site in Harvard Square
- Is sandwiched between small wood frame houses and a big brick theater
- **Embraces the Native American Community's identity, traditions, and culture**



TUPI



LONGHOUSE



WETU



WAMPUM FROM QUAHOG CLAM &
CHANNELED WHELK SHELL



CONTEMPORARY WAMPUM

2. AND AVOIDS CLICHE FORMAL ARCHETYPE

- A building that does not imitate the past built-form

BUT EMBRACES THE PAST AND PRESENT

- Wampum as the **integral part of design concept**

3. WHAT IS WAMPUM?

- Wampum is a sophisticated, traditional shell bead art of the Native American tribes of the Eastern Woodlands

4. WHY IS WAMPUM SIGNIFICANT?

- **Symbol of harmony and peace** between Communities
- Mnemonic device that **represents specific moments in Native American history**



OTGÓ'Ä' WAMPUM



5. IDENTITY BY MATERIALITY & COLORS

- Element of traditional Native American culture deployed as contemporary construction material

=

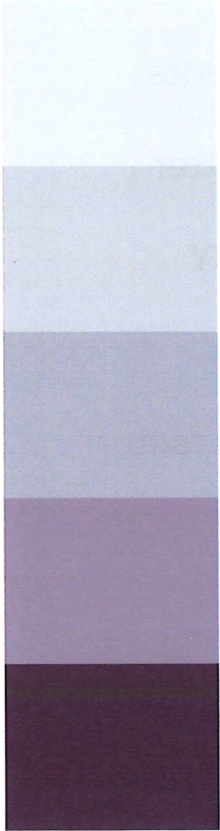


WAMPUM

+



BARK SIDING



“By creating this building, we are crafting our own historic moment of relationship and commitment between the HUNAP Community and The University. Wampum is not only part of our past, but also plays a significant role in our present, so it is an element that finds the balance and challenges the erasure of native existence today.”

- Jordan Clark (Wampanoag Tribe of Aquinnah)
HUNAP Executive Director

PROPOSED SITE PLAN

- REDEVELOP SITE WITH NEWLY CONSTRUCTED SUSTAINABLE BUILDING

RESPECT ZONING

- Comply with all dimensional requirements
- Create more generous side yard to abutter

STRENGTHEN SUSTAINABILITY | RESILIENCY

- All electric | Non fossil fuel combustion
- Comply with flood resilience and green factor zoning requirements

KEEP ALLEYWAY WIDTH

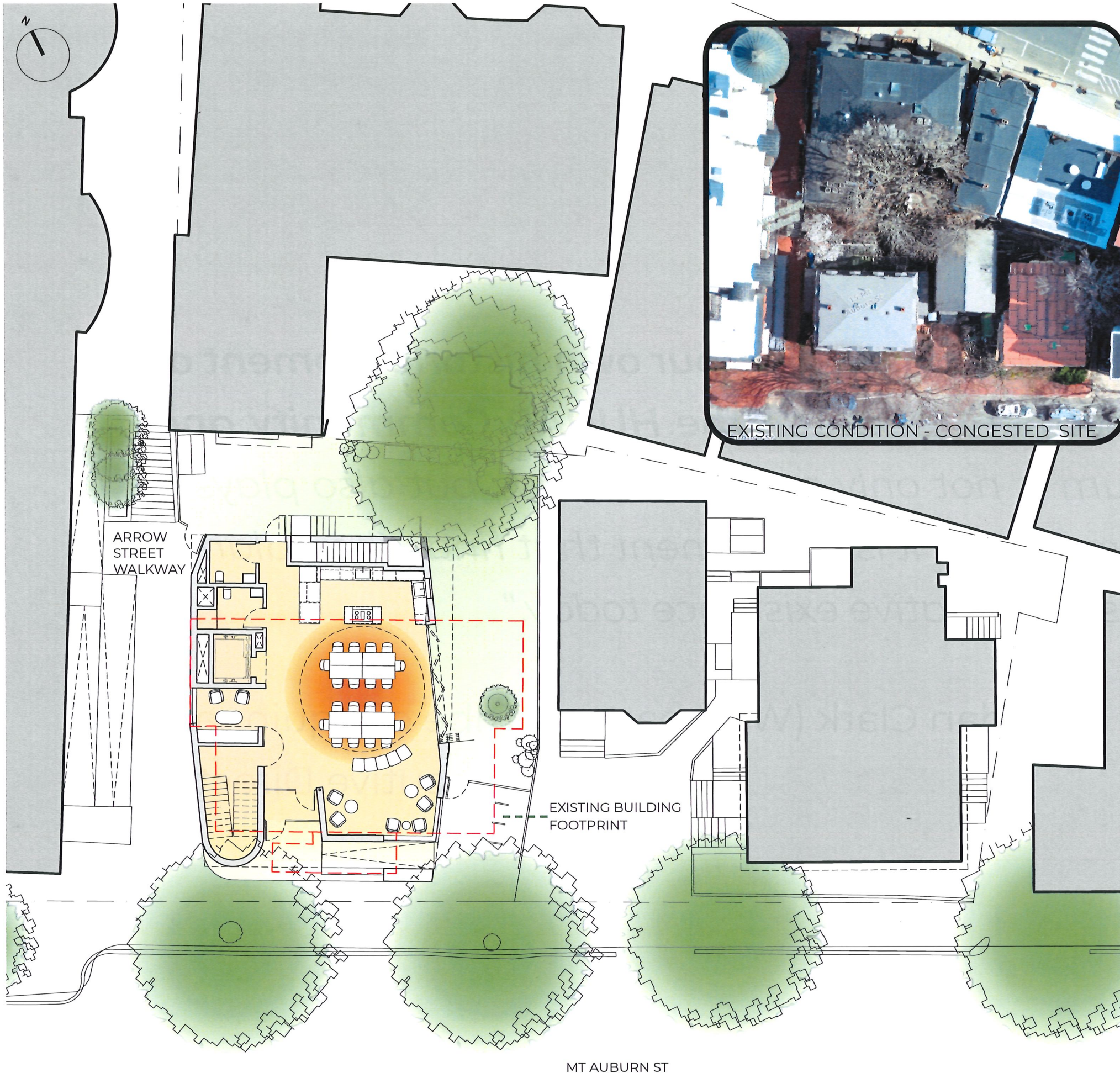
- Provide same public access to alleyway

MAINTAIN SCALE

- Compliment scale of the wood frame residences
- 5,565 GFA
- 36'-10 1/2" height (3 stories)

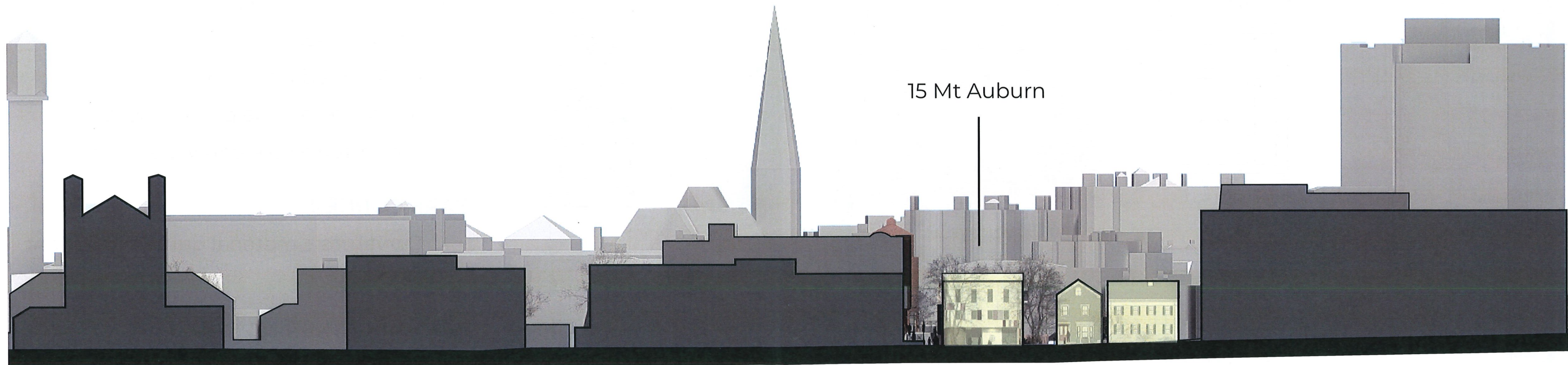
IMPROVE PUBLIC REALM | OPEN SPACE

- Improve public sidewalk and site accessibility
- New plantings and permeable pavers



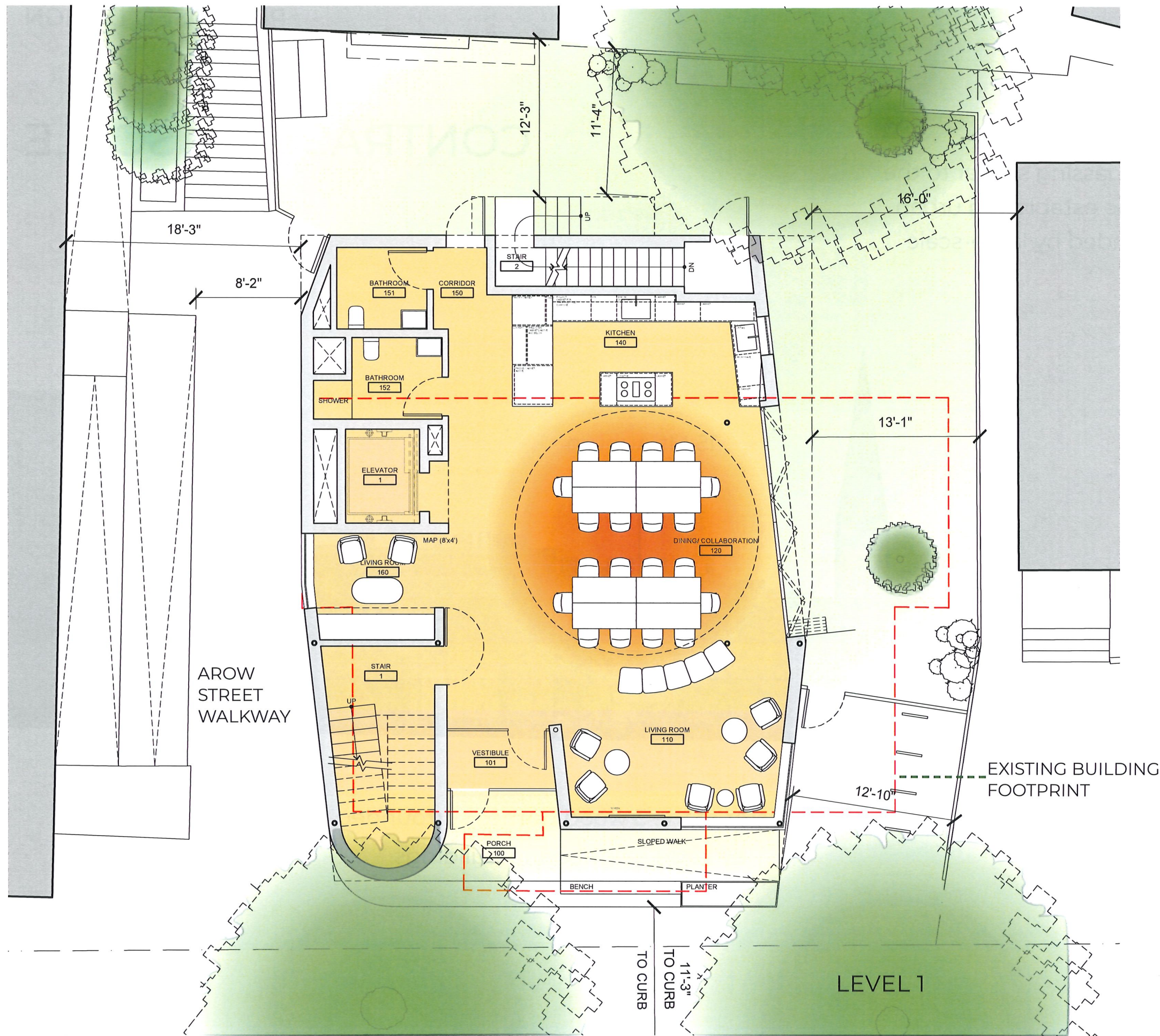
CONTRASTING SCALE

The proposed design maintains the scale of the massing similar to the existing building today. It follows and respects the established urban context of small scale wood frame cluster surrounded by large-scale masonry structures.



Cluster of the 3 wood frames surrounded
by large neighboring buildings

PLANS



MAIN ENTRY

- Widened sidewalk
- Covered porch
- ADA sloped walk (1:20)
- 6 short-term bike parking spots
- 2 long-term bike parking spots

BARK CORNER

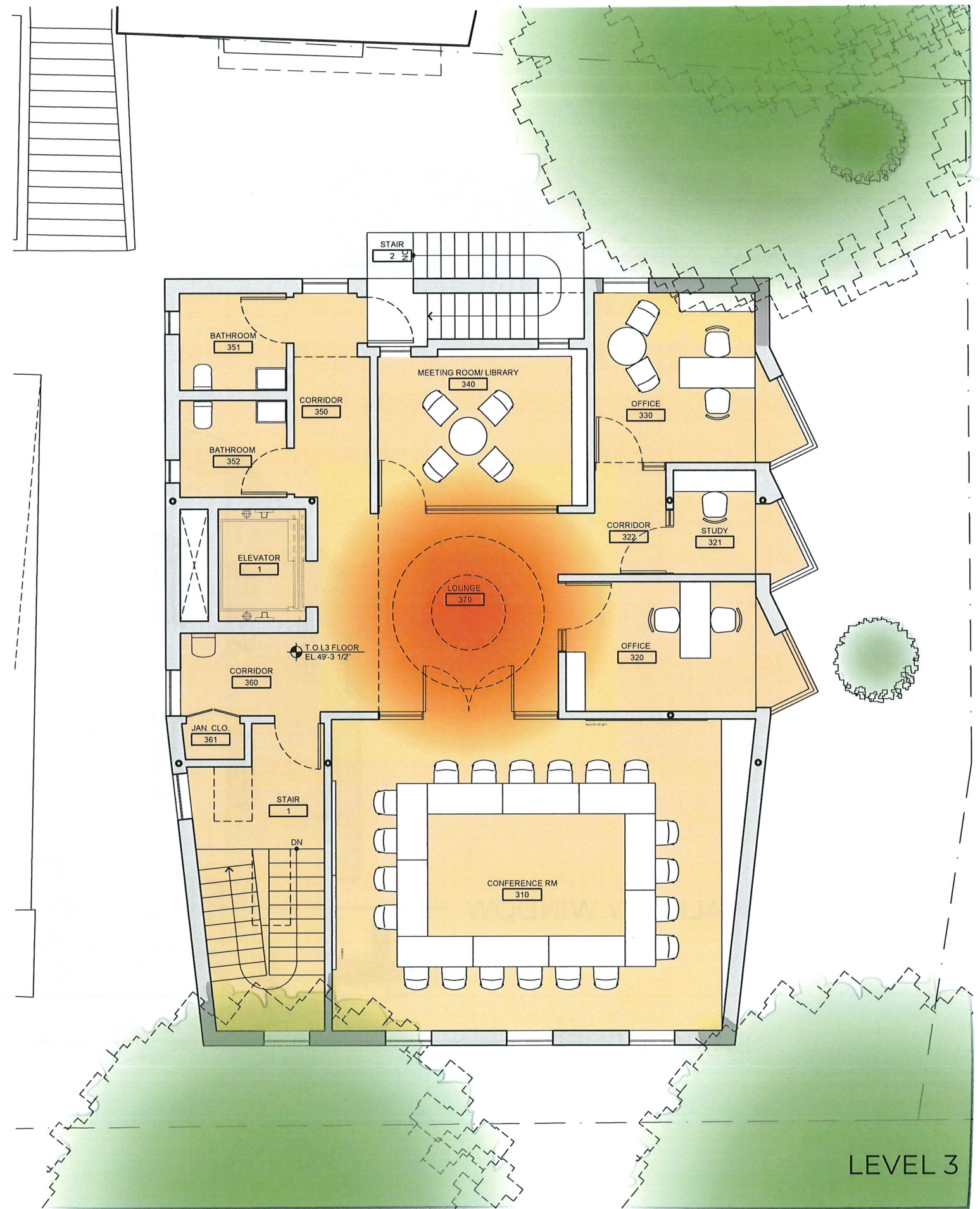
- Curvature + material guide movement to entry

INDOOR GATHERING SPACE

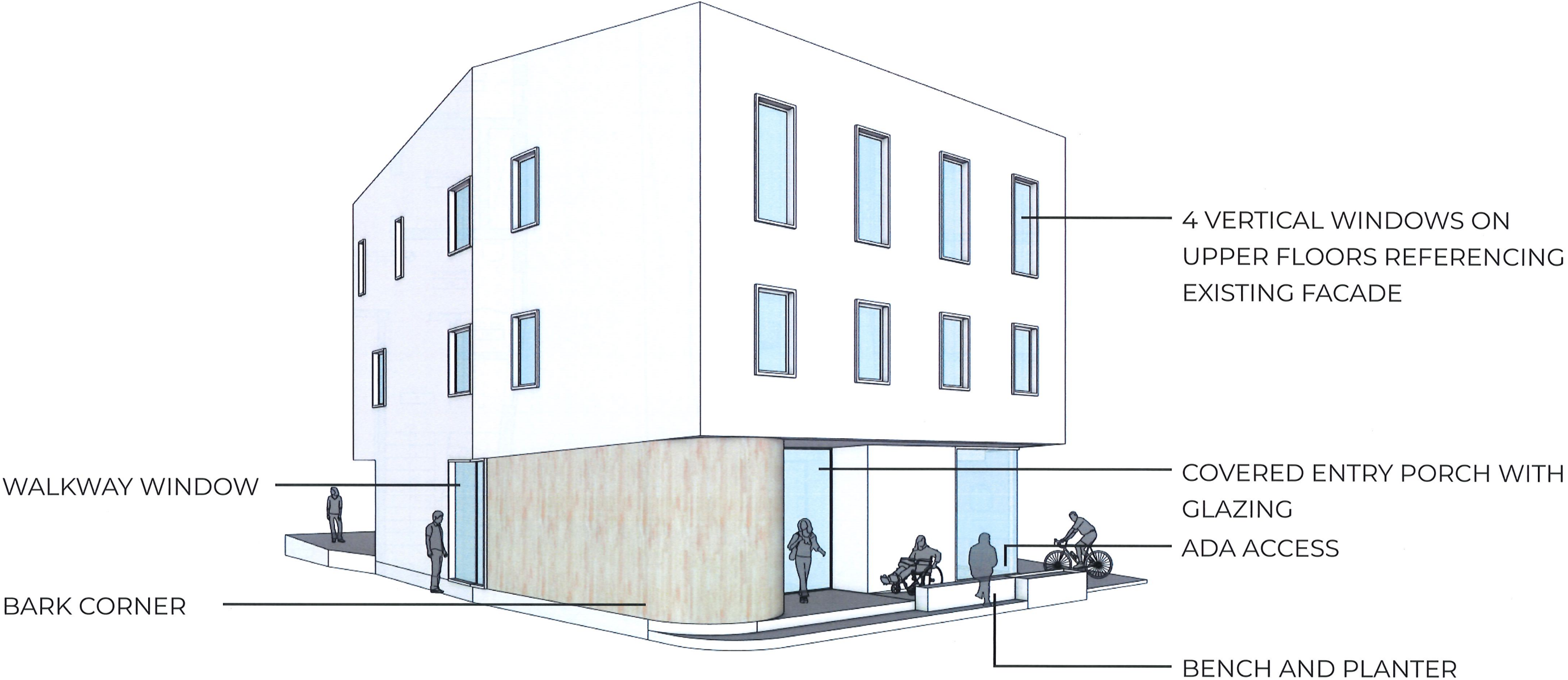
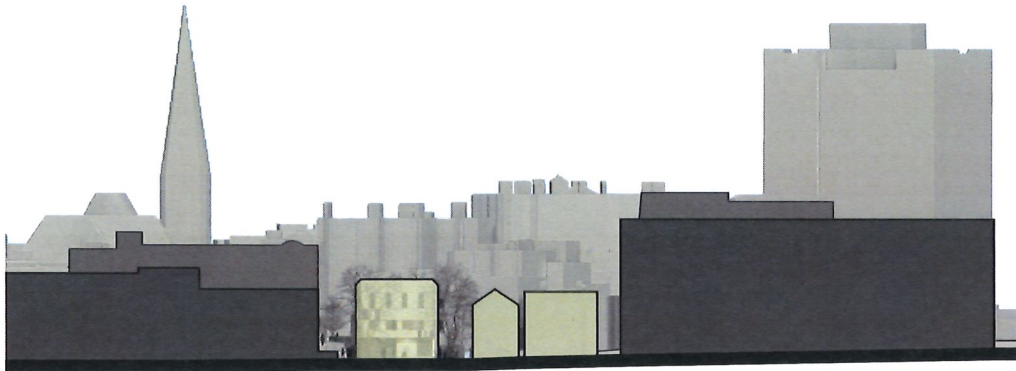
- Flexible student space

OUTDOOR SPACE

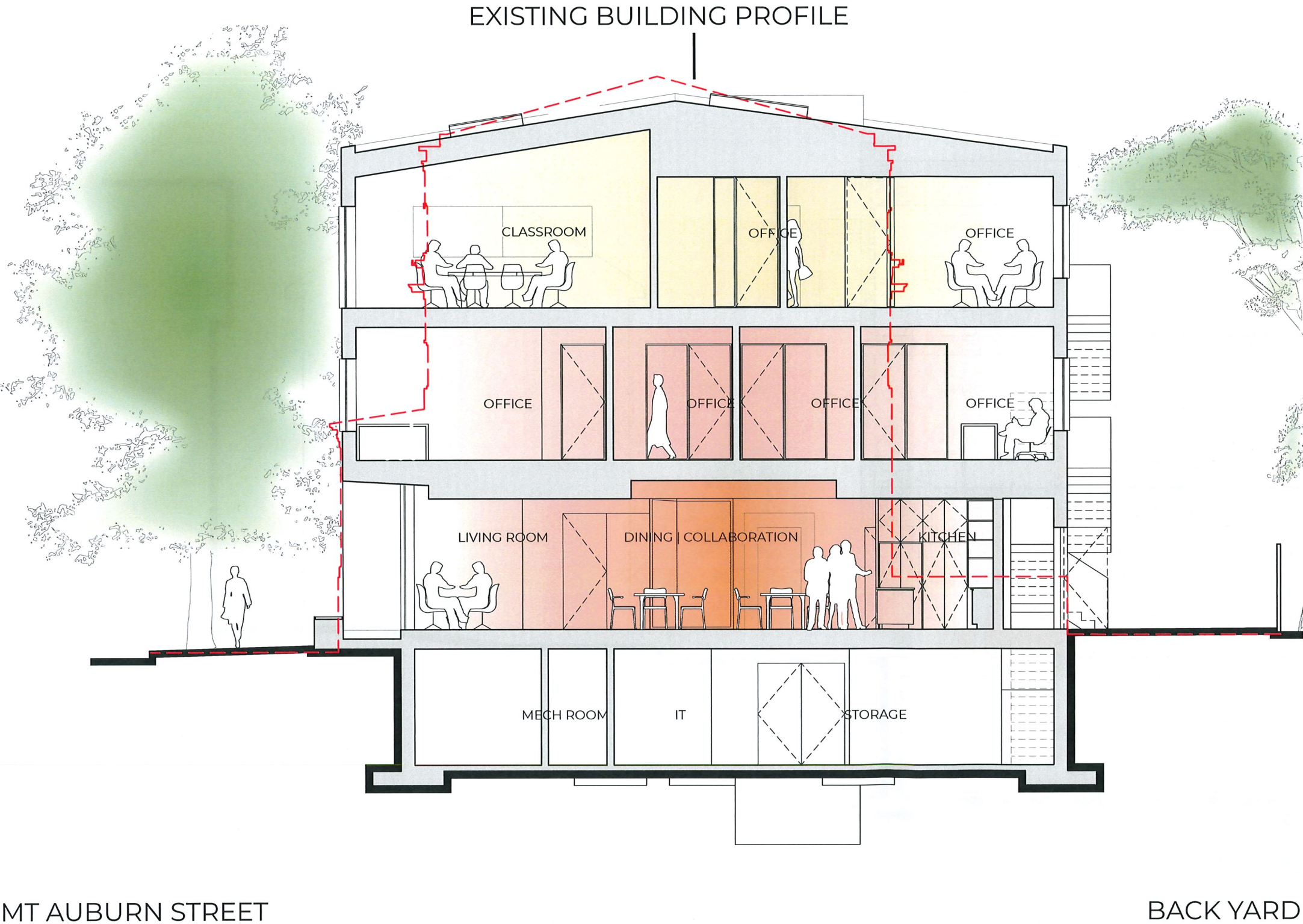
- Sideyard with sun exposure
- Sacred tree and native plants



MASSING



SECTIONS



BUILDING HEIGHTS

- 3 STORIES ABOVE GROUND + BASEMENT
- 33'-2 1/2" HIGH (STREET FACADE)
- 36'-10 1/2" HIGH (ROOF RIDGE)

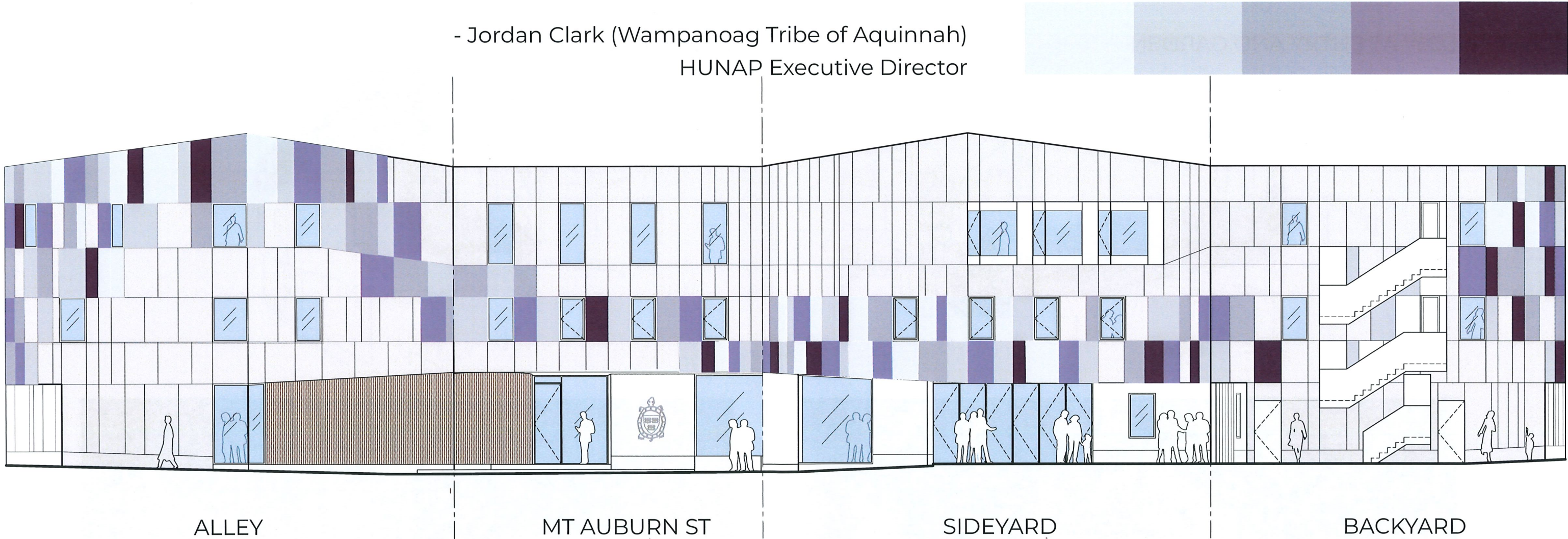


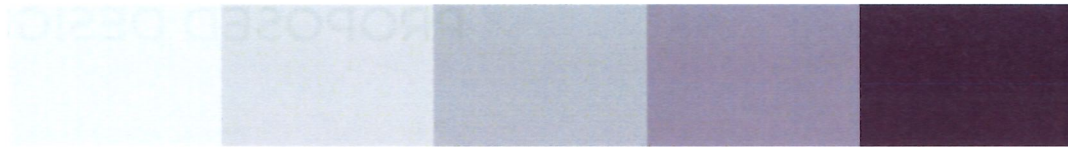
2 ARROW ST AROW STREET WALKWAY 15 MT AUBURN ST SIDE YARD 11 MT AUBURN ST 9 MT AUBURN ST

“For us, its important to find the balance between the past and the present. **The current façade design aims to find that balance and emphasize aspects of culturally significant components of local native culture and history.**”

FACADE DESIGN

- Jordan Clark (Wampanoag Tribe of Aquinnah)
HUNAP Executive Director





The wampum-inspired purple facade panels move across the facades at different heights, following circulation and activities around the site.

FACADE PATTERN

LOW AT ENTRY AND GARDEN



HIGH AT ALLEYWAY



Use materials, colors, and details that are relevant and meaningful to the Native American Community

Placement by the entrance and the side yard **welcomes and engages the Community**, and enhances the pedestrian experience

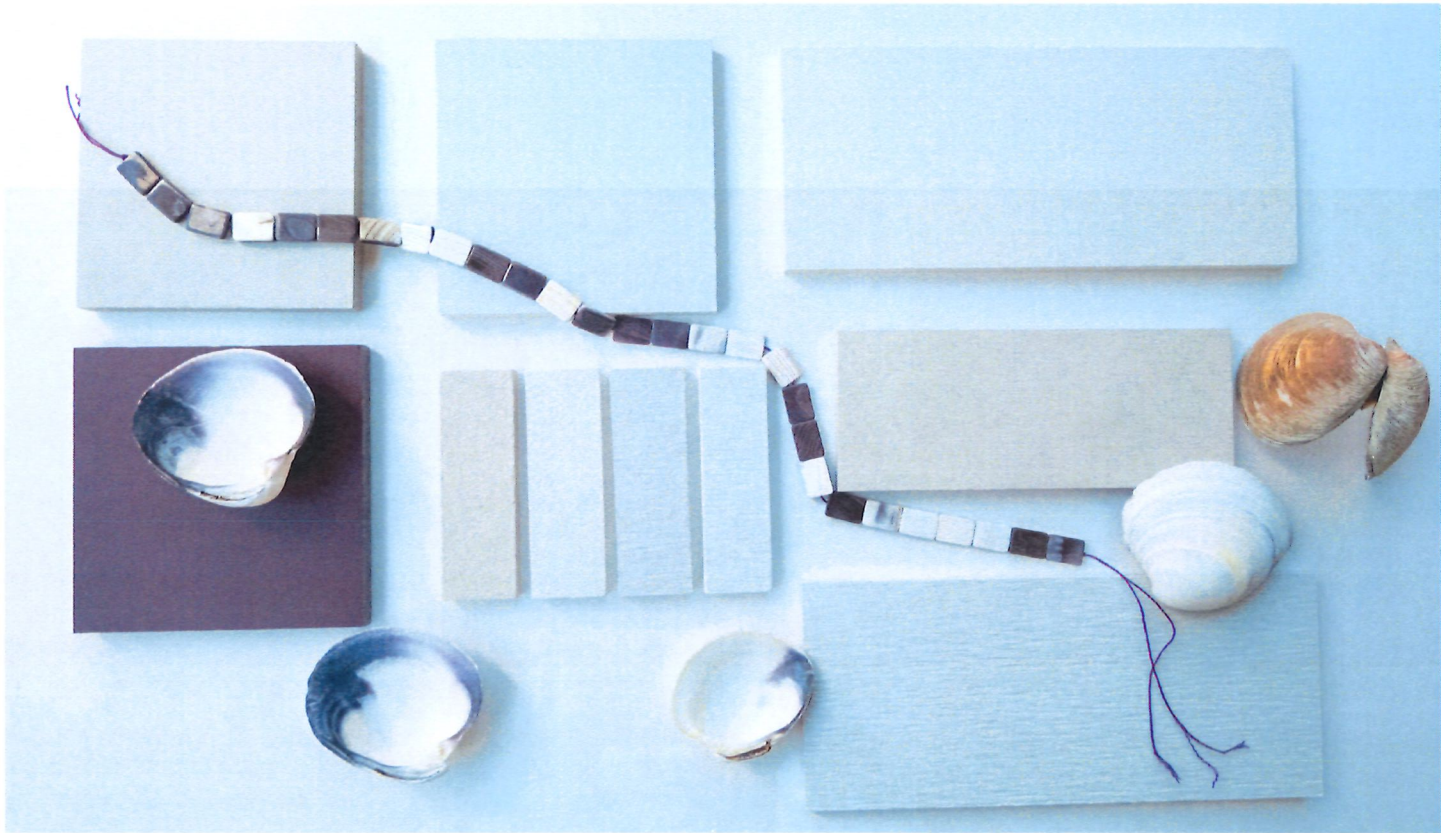


MAIN ENTRANCE CLOSE UP



SIDEYARD CLOSE UP

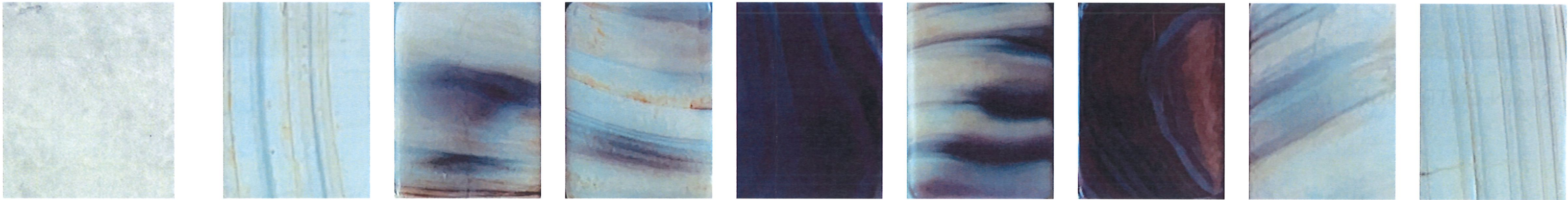
FACADE MATERIAL - CLADDING PANELS



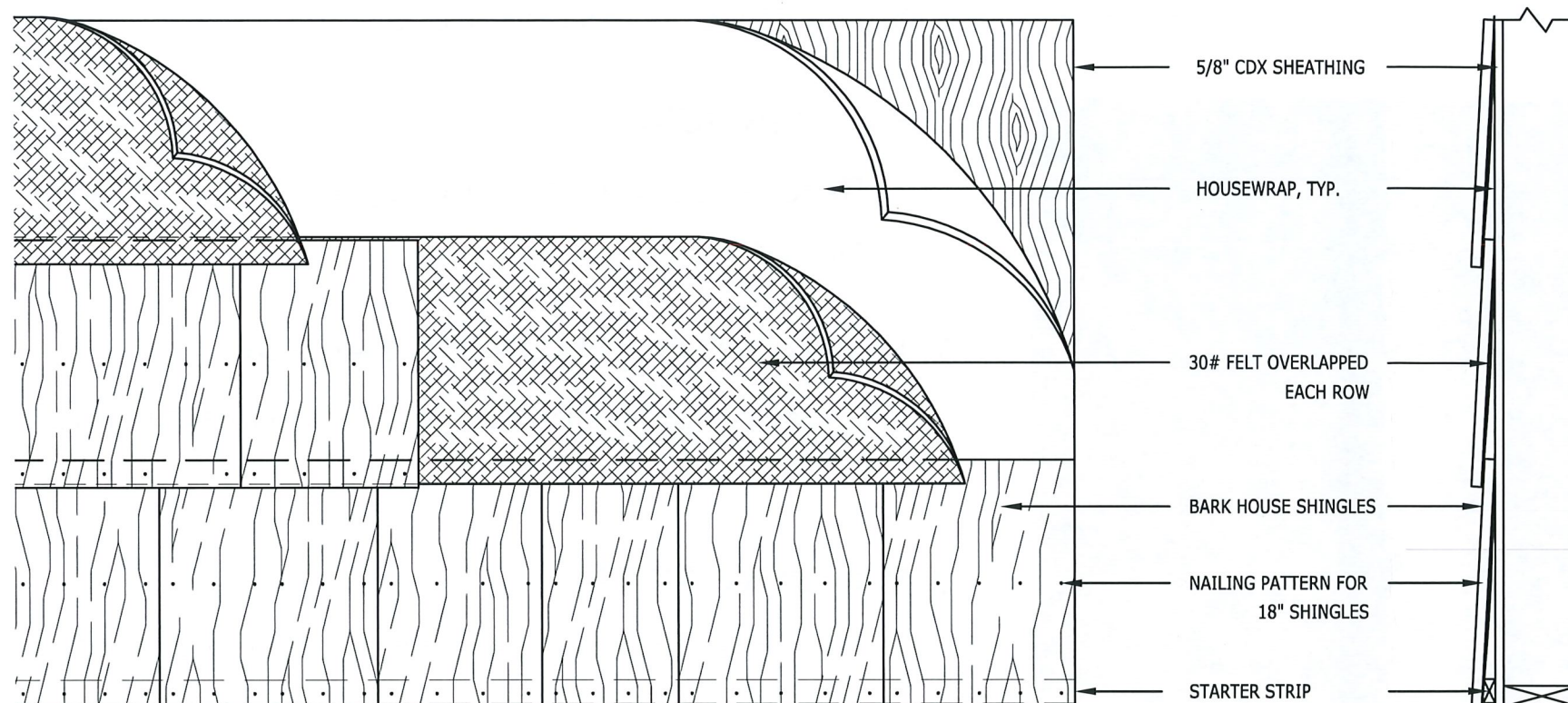
THE FACADE IS DESIGNED TO BE A RAIN SCREEN SYSTEM. VARIOUS MATERIALS ARE BEING CONSIDERED FOR THE CLADDING PANELS. THE FINAL PROPOSAL WILL BE PRESENTED DURING THE PUBLIC HEARING ON JUNE 5, 2025.

THE CLADDING PANELS WOULD HAVE THE FOLLOWING CHARACTERISTICS:

- A MIX OF CUSTOM COLORS WITH VARIOUS SHADES OF MUTED GREY AND PURPLE TONES
- A MIX OF TEXTURED OR PATTERNED SURFACES TO REFLECT THE VISUAL INTEREST OF WAMPUM
- DURABLE AND LOW MAINTENANCE



FACADE MATERIAL - BARK SIDING



BARK SIDING CHARACTERISTICS

- SPECIES: TULIP POPLAR
- NATURAL WEATHER RESISTANCE
- DURABLE AND LOW MAINTENANCE
- SUSTAINABLE, RECLAIMED FORESTRY WASTE PRODUCT
- FIRE RATED (CLASS B)
- KILN DRIED TO STERILIZE AND REMOVE PESTS
- INSECT RESISTANT DUE TO ALPHA PINENE PRESENCE
- AGES NATURALLY
- UP TO 1 1/2" THICK

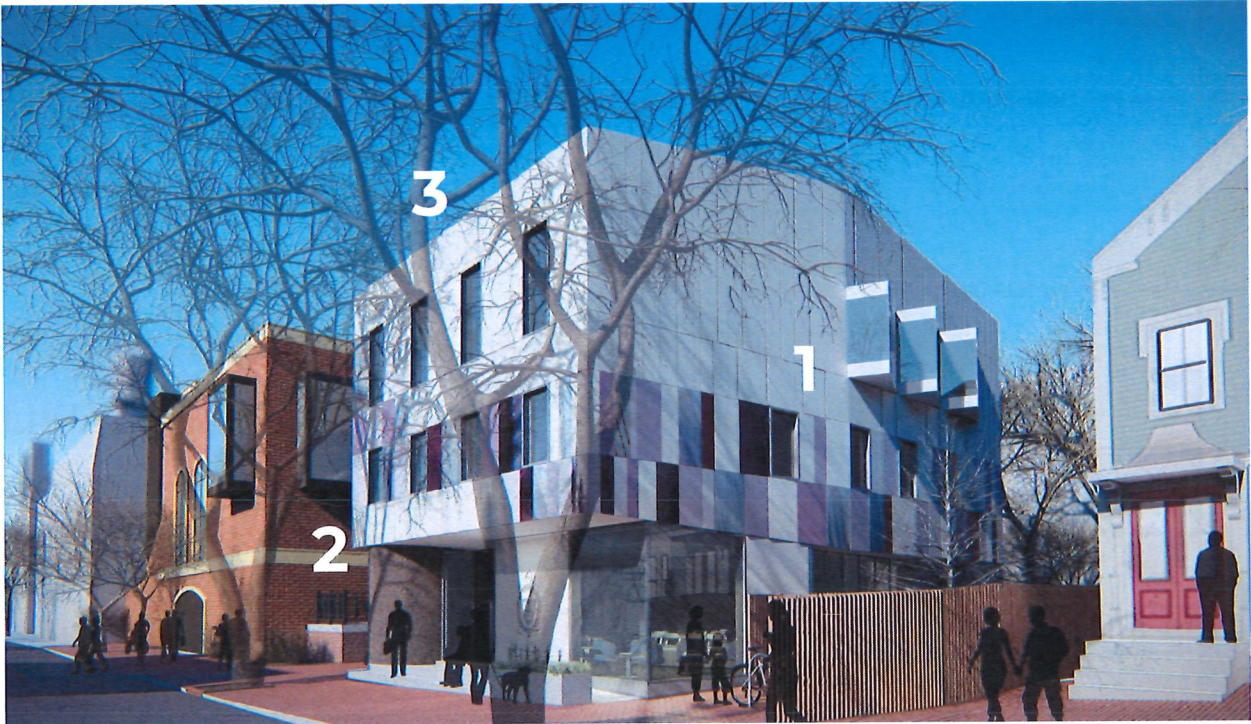


FAMILIAR FACADE ELEMENTS

The proposed design at 15 Mt Auburn draws inspiration from facade elements existing at and near the site



CORNICE
BAY WINDOW



- 1. BAY WINDOWS**
 - Reference to those on adjacent buildings, big or small
- 2. HORIZONTAL DATUM ON FACADE**
 - Exterior soffit creates a strong datum, similar to cornices
- 3. WINDOW ARRAY**
 - Vertical windows reference existing building main facade

WINDOW
ARRAY



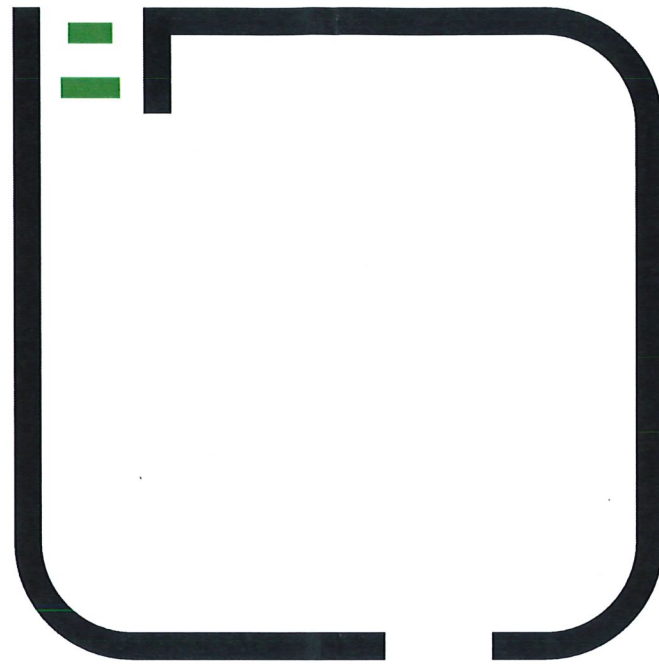
CORNICE
BAY WINDOW

BUILDING EXTERIOR VIEWS (WINTER)



MT AUBURN STREET VIEW (SUMMER)





LEE²DESIGN

ARCHITECTURE | DESIGN | INTERIORS

A certified Minority Business Enterprise (MBE)

36 Seven Pines Avenue #1 Cambridge MA 02140
+1.617.682.2826 | info@lee2design.com
www.lee2design.com

