

Sherman Street Combined Sewer Overflow Tank and Facilities

Community Meeting

Thursday, December 11, 6:00 pm

Peabody School Cafeteria



Agenda

Presentation

- Combined Sewer Overflow (CSO) background
- Updated CSO Control Plan
- The Sherman St. CSO Tank
 - What it will accomplish
 - Why it has to go here
 - What it will look like
 - Construction timeline
- The facility
- Pedestrian Path Connector

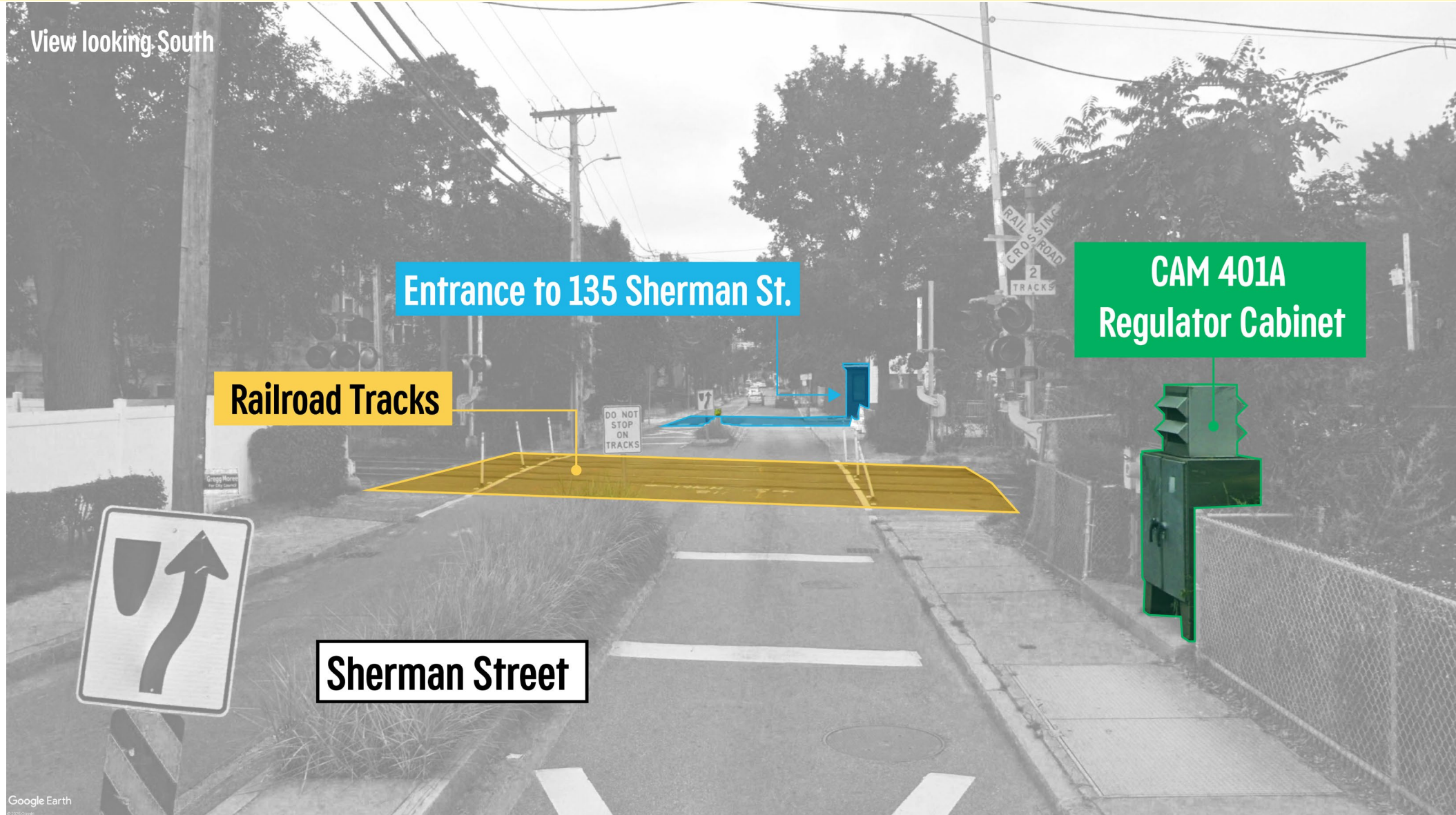
Interactive Workshop

- Visit the boards for more in-depth information
- Speak to the project team

Orientation to 135 Sherman St.

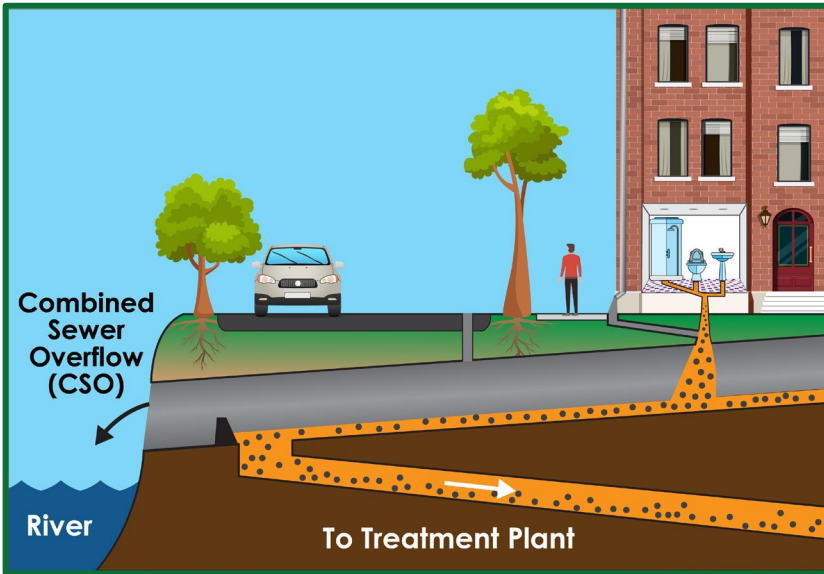


Street level view looking south toward 135 Sherman St.

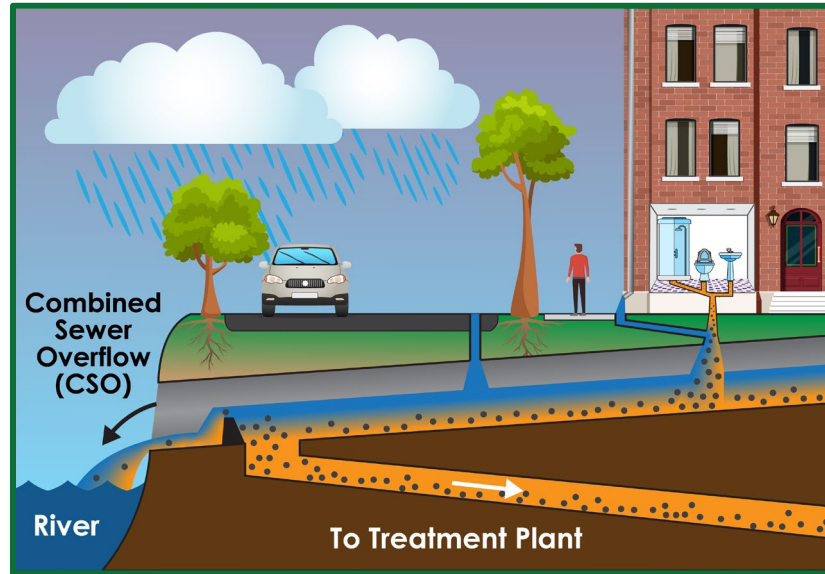


Combined Sewer Overflows

- What are combined sewer overflows?



Combined System – Dry Weather



Combined System – Wet Weather



Separated System – Wet Weather

Updated CSO Control Plan: Ongoing

Plan Goals:

- Reduce or eliminate CSO discharges
- Improve water quality
- Improve aging infrastructure
- Reduce flooding
- Meet regulatory requirements
- See more:
voice.somervillema.gov/joint-cso-planning

A Key Strategy:

Underground tank at 135 Sherman St.

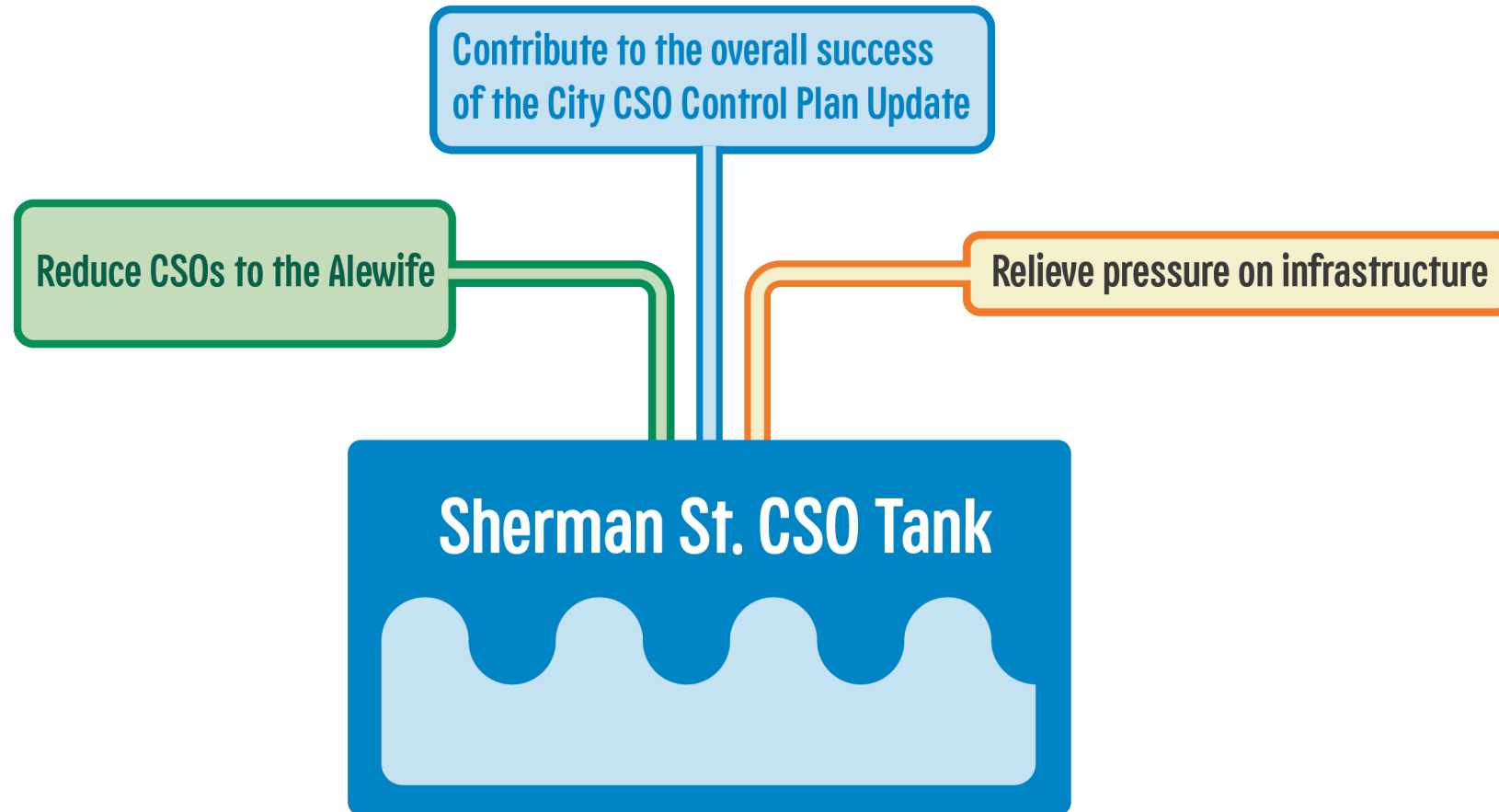


Sherman Street CSO Tank: Why here?

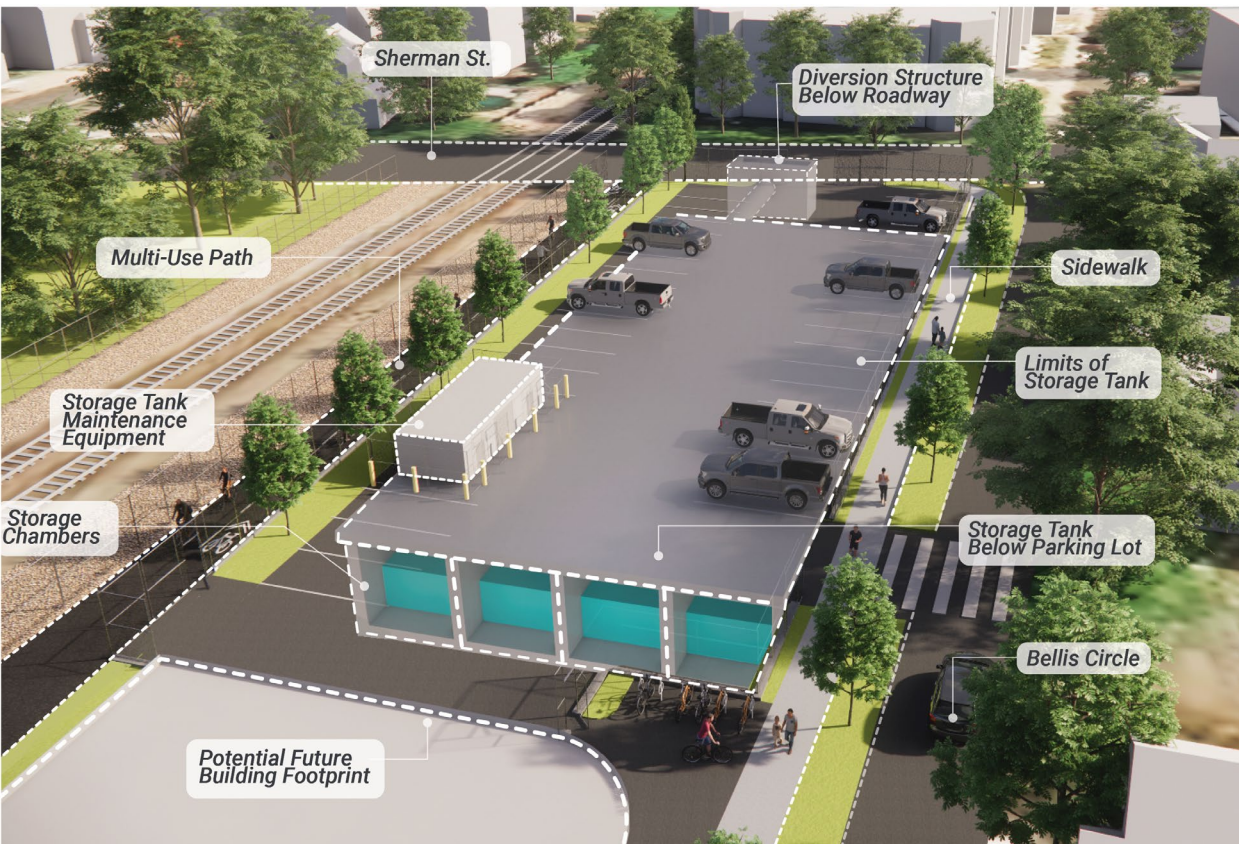
- Near CAM 401A CSO regulator
- Most effective when closest to the regulator
- City bought this space in 2023



Sherman Street CSO Tank: What will it accomplish?



Tank Details

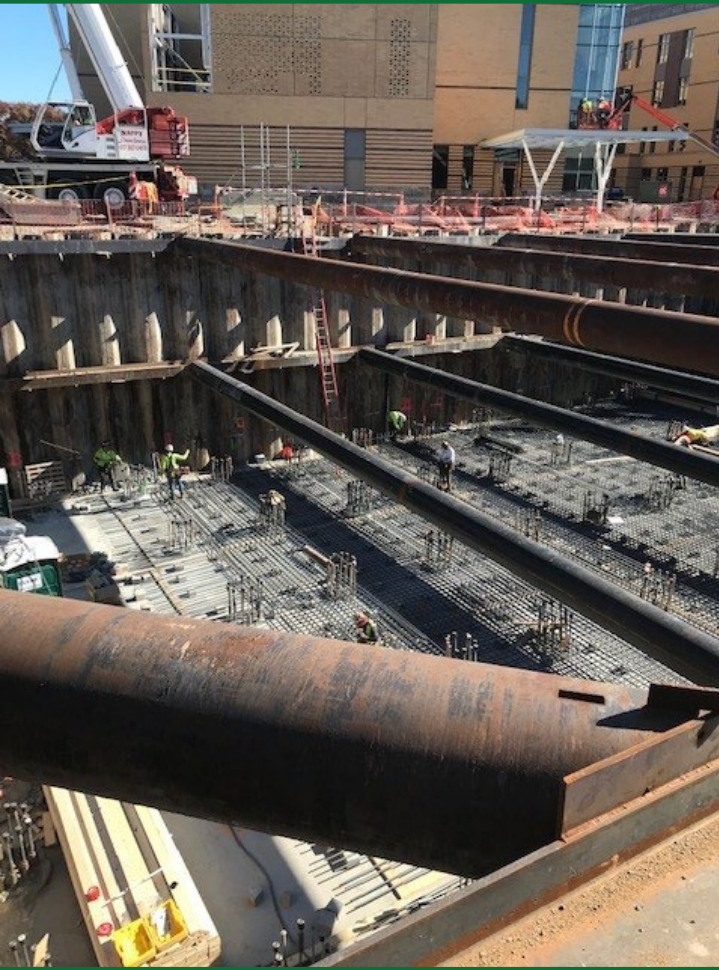


- Placed underground, on the east end of the parcel
- Made of concrete
- 170' long by 70' wide
- Holds 2.1-million gallons (MG)



- Fully restored surface
- Can accommodate future parking and building

Similar Tanks: Tobin School (1.25 million gallons)



Tank during construction



Tank during construction

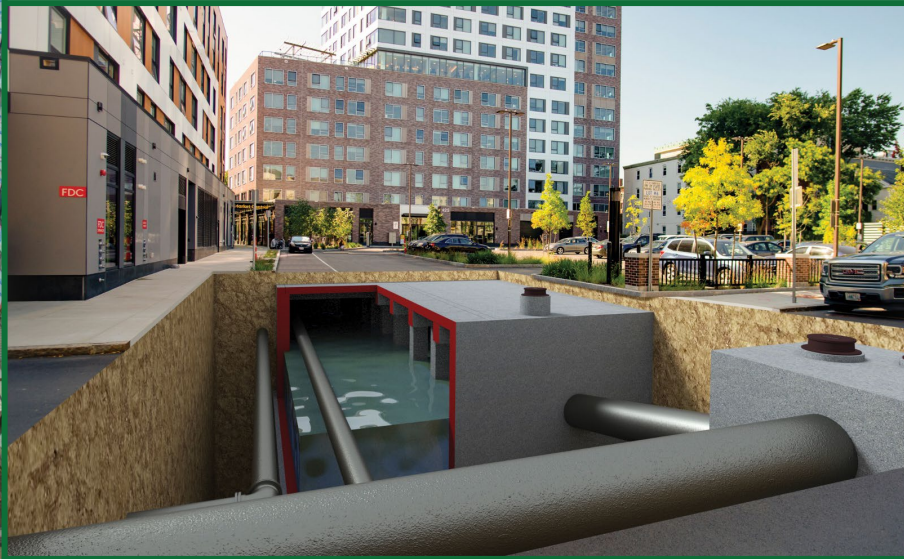


Site, today, with surface restored

Similar Tanks: The Port (390,000 gallons)



Tank during construction



Cut-away view of tank beneath parking lot



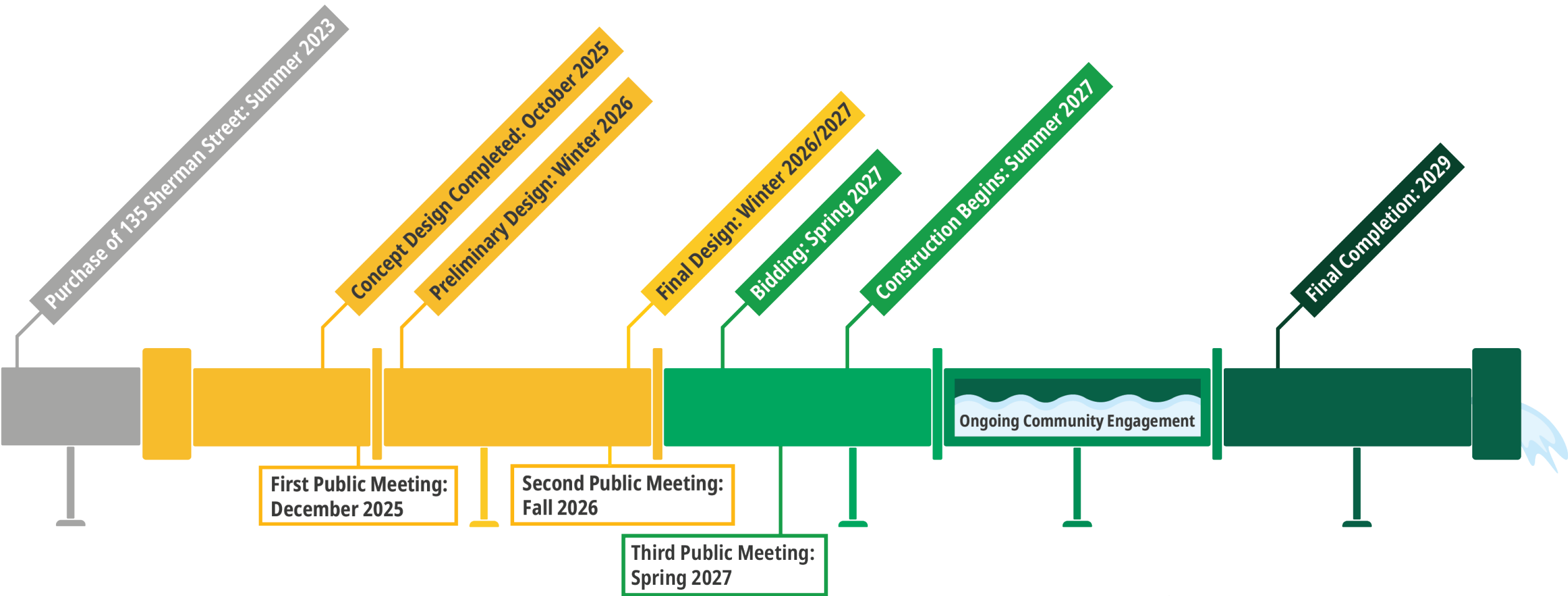
Site, today, with surface restored

Construction Impacts

- Parking restrictions - "No Parking" signs posted with 24-hour notice
- Truck traffic entering and exiting the site
- Vibration and dust monitoring
- Access maintained for emergencies and City services
- Construction hours: Monday-Friday, 7 a.m.-4 p.m. (6 p.m. per noise ordinance)



Tank Construction Schedule



What else could be here?



A facility – use to be determined

- Office space
- Equipment and vehicle storage
- Housing: 75-foot-height maximum

**Concept, only. Not final design.*

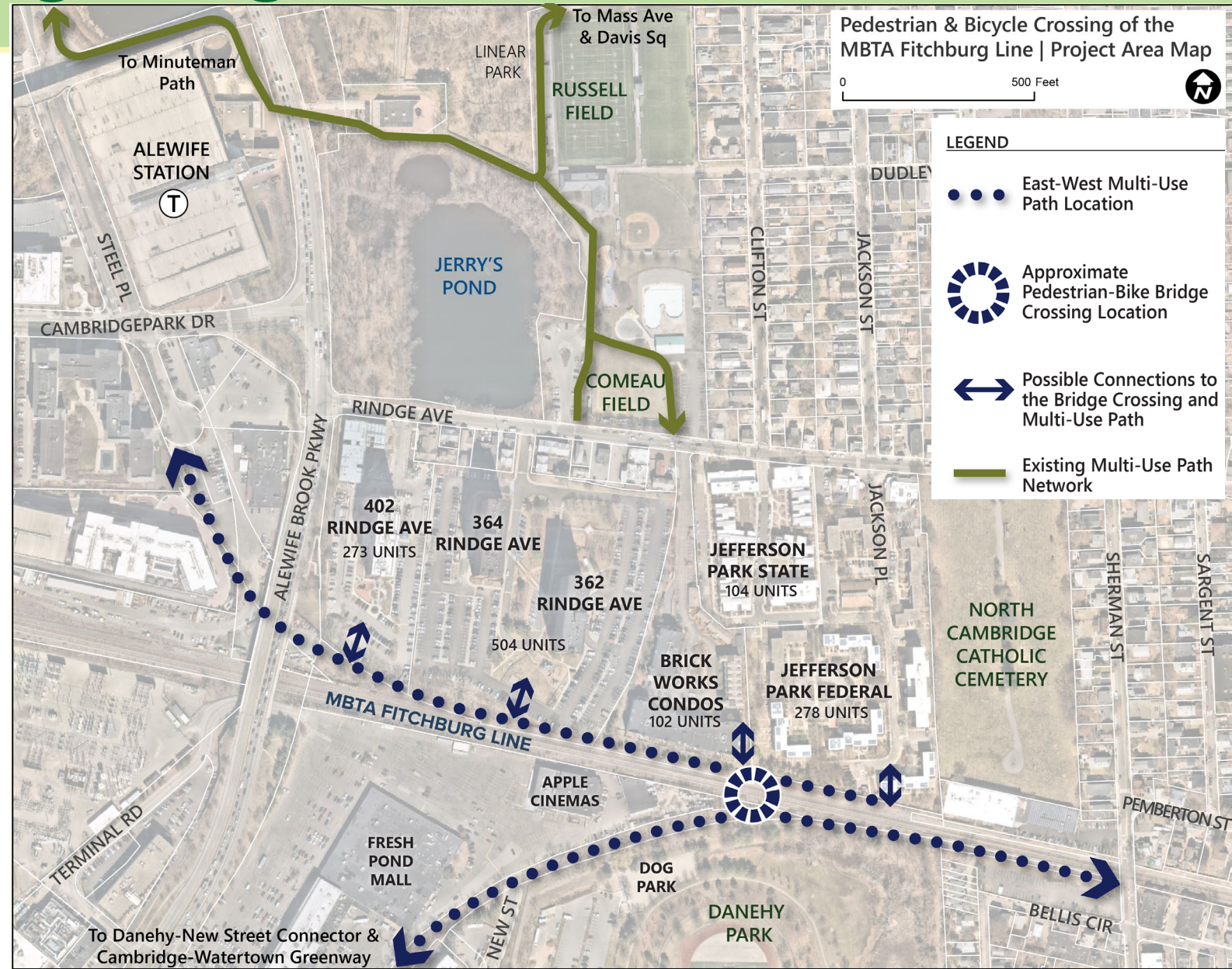
Fitchburg Crossing Bridge & Multi-Use Path

- City beginning design of a Bicycle & Pedestrian Bridge over the Fitchburg MBTA Line
- \$3.3 million in funds lined up for preliminary and final design of bridge and connecting multi-use paths
- The bridge will cross the Fitchburg line tracks, connecting Rindge Ave neighborhood to Danehy Park



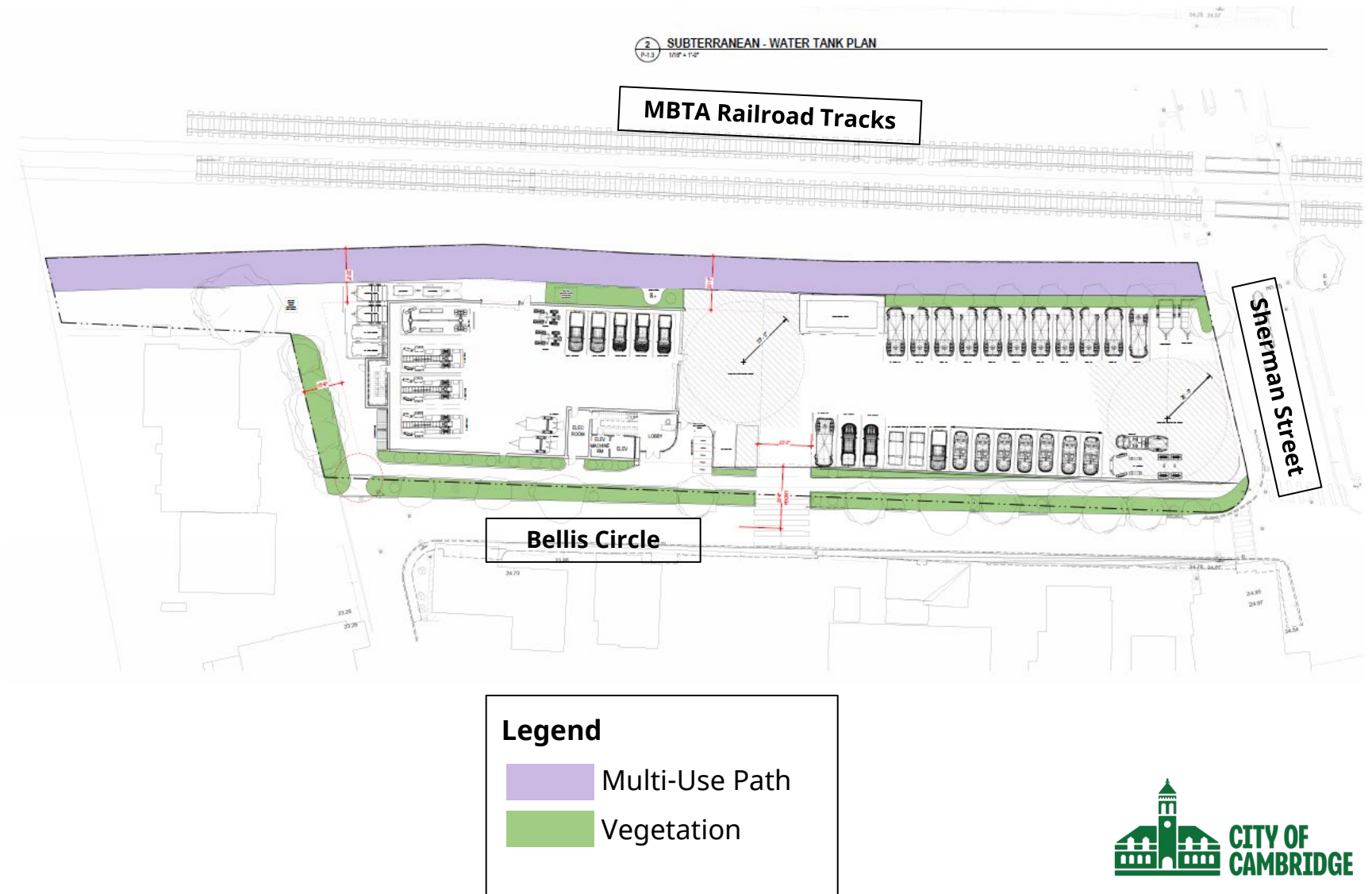
Fitchburg Crossing Bridge & Multi-Use Path

- The project includes design of multi-use paths parallel to the tracks
- Create a connection between Sherman Street, Alewife Station, and the upcoming Danehy-New St. Connector Path



Fitchburg Crossing Bridge & Multi-Use Path

- The Fitchburg Crossing project will utilize a small slice of Sherman St. property to build this path connection



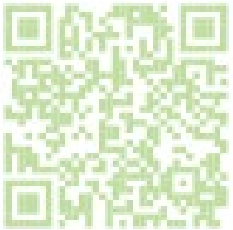
Next Steps

- Continue design of the CSO tank
- Next meeting on CSO tank – Spring 2026



Project Page:

<https://camb.ma/shermanstreetfacility>



To sign up to receive updates, visit the project page and click the orange box that says “Sign Up Now,” or scan the QR code on the left.