



Copyright Reserved

The Contractor shall verify and be responsible for all dimensions, DO NOT locate the drawings; any errors or omissions shall be reported to Stantec without delay. The Copyright in all designs and drawings are the property of Stantec. Reproduction or use for any purpose other than that authorized by Stantec is prohibited.

Consultants

Legend

Notes

Revision	By	App'd	DT/AM

Issued	By	App'd	DT/AM

Permit Seal



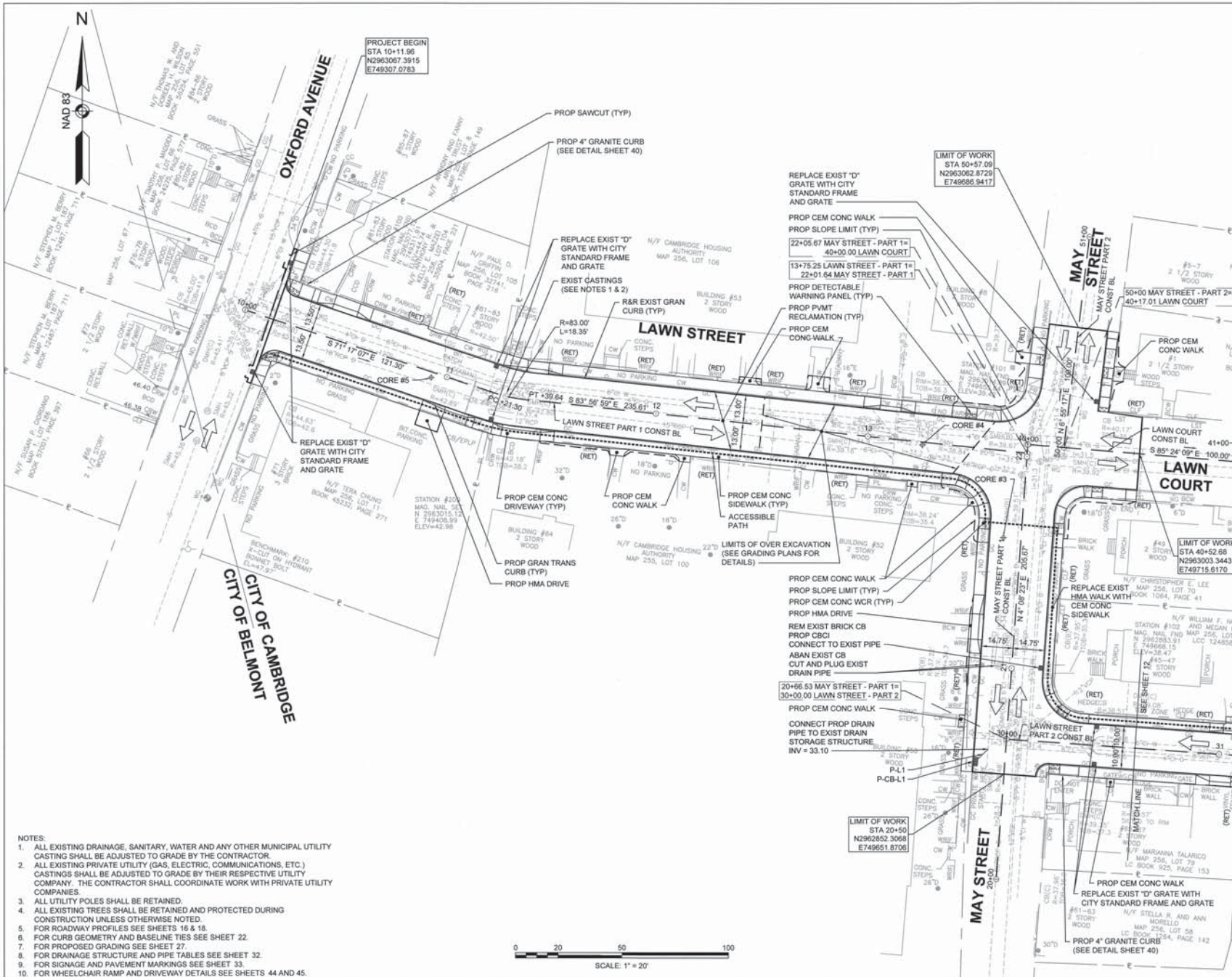
Client/Project  
Cambridge Department of Public Works

Chapter 90 Contract 21  
Lawn St., Kenwood St., Harding St. & Porter St.  
Cambridge, MA

Title  
**CONSTRUCTION PLAN  
LAWN STREET  
PART 1 OF 2**

Project No. 179410352  
Drawing No. Sheet

Scale 1" = 20'  
Revision



- NOTES:
- ALL EXISTING DRAINAGE, SANITARY, WATER AND ANY OTHER MUNICIPAL UTILITY CASTING SHALL BE ADJUSTED TO GRADE BY THE CONTRACTOR.
  - ALL EXISTING PRIVATE UTILITY (GAS, ELECTRIC, COMMUNICATIONS, ETC.) CASTINGS SHALL BE ADJUSTED TO GRADE BY THEIR RESPECTIVE UTILITY COMPANY. THE CONTRACTOR SHALL COORDINATE WORK WITH PRIVATE UTILITY COMPANIES.
  - ALL UTILITY POLES SHALL BE RETAINED.
  - ALL EXISTING TREES SHALL BE RETAINED AND PROTECTED DURING CONSTRUCTION UNLESS OTHERWISE NOTED.
  - FOR ROADWAY PROFILES SEE SHEETS 16 & 18.
  - FOR CURB GEOMETRY AND BASELINE TIES SEE SHEET 22.
  - FOR PROPOSED GRADING SEE SHEET 27.
  - FOR DRAINAGE STRUCTURE AND PIPE TABLES SEE SHEET 32.
  - FOR SIGNAGE SEE SHEET 33.
  - FOR WHEELCHAIR RAMP AND DRIVEWAY DETAILS SEE SHEETS 44 AND 45.

Copyright Reserved  
 The Contractor shall verify and be responsible for all dimensions, CO  
 & D on the drawing; any error or omission shall be reported to  
 Stantec without delay.  
 The Contractor is to design and drawings are the property of  
 Stantec. Instructed in use for any purpose other than that  
 authorized by Stantec & its affiliates.

Consultants

Legend

Notes

Revision	By	App'd	DATE

Issued	By	App'd	DATE

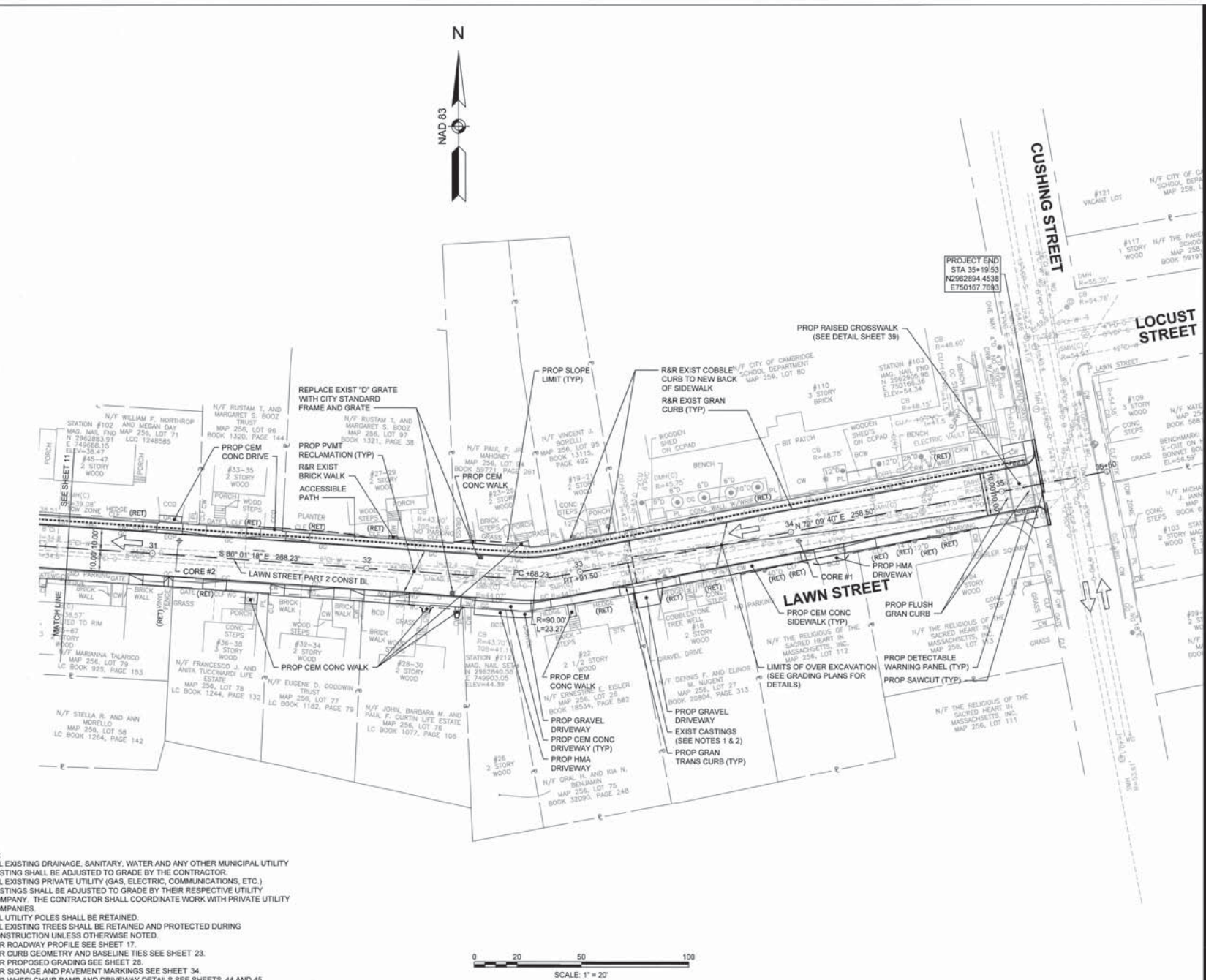
Name	Title	Check	Date

Client/Project  
 Cambridge Department of Public Works

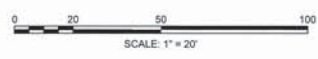
Chapter 90 Contract 21  
 Lawn St., Kenwood St., Harding St. & Porter St.  
 Cambridge, MA

Title  
**CONSTRUCTION PLAN**  
**LAWN STREET**  
**PART 2 OF 2**

Project No.	Scale	
179410352	1" = 20'	
Drawing No.	Sheet	Revision



- NOTES:**
1. ALL EXISTING DRAINAGE, SANITARY, WATER AND ANY OTHER MUNICIPAL UTILITY CASTING SHALL BE ADJUSTED TO GRADE BY THE CONTRACTOR.
  2. ALL EXISTING PRIVATE UTILITY (GAS, ELECTRIC, COMMUNICATIONS, ETC.) CASTINGS SHALL BE ADJUSTED TO GRADE BY THEIR RESPECTIVE UTILITY COMPANY. THE CONTRACTOR SHALL COORDINATE WORK WITH PRIVATE UTILITY COMPANIES.
  3. ALL UTILITY POLES SHALL BE RETAINED.
  4. ALL EXISTING TREES SHALL BE RETAINED AND PROTECTED DURING CONSTRUCTION UNLESS OTHERWISE NOTED.
  5. FOR ROADWAY PROFILE SEE SHEET 17.
  6. FOR CURB GEOMETRY AND BASELINE TIES SEE SHEET 23.
  7. FOR PROPOSED GRADING SEE SHEET 26.
  8. FOR SIGNAGE AND PAVEMENT MARKINGS SEE SHEET 34.
  9. FOR WHEELCHAIR RAMP AND DRIVEWAY DETAILS SEE SHEETS 44 AND 45.



©2016, SHoP Architects