

Revision	By	Appd.	Y/M/D

File Name	DWGN	CHKD	DSGN	DATE
porter_harding_const_plans.dwg	DWH	CHD	DGN	Y/M/D

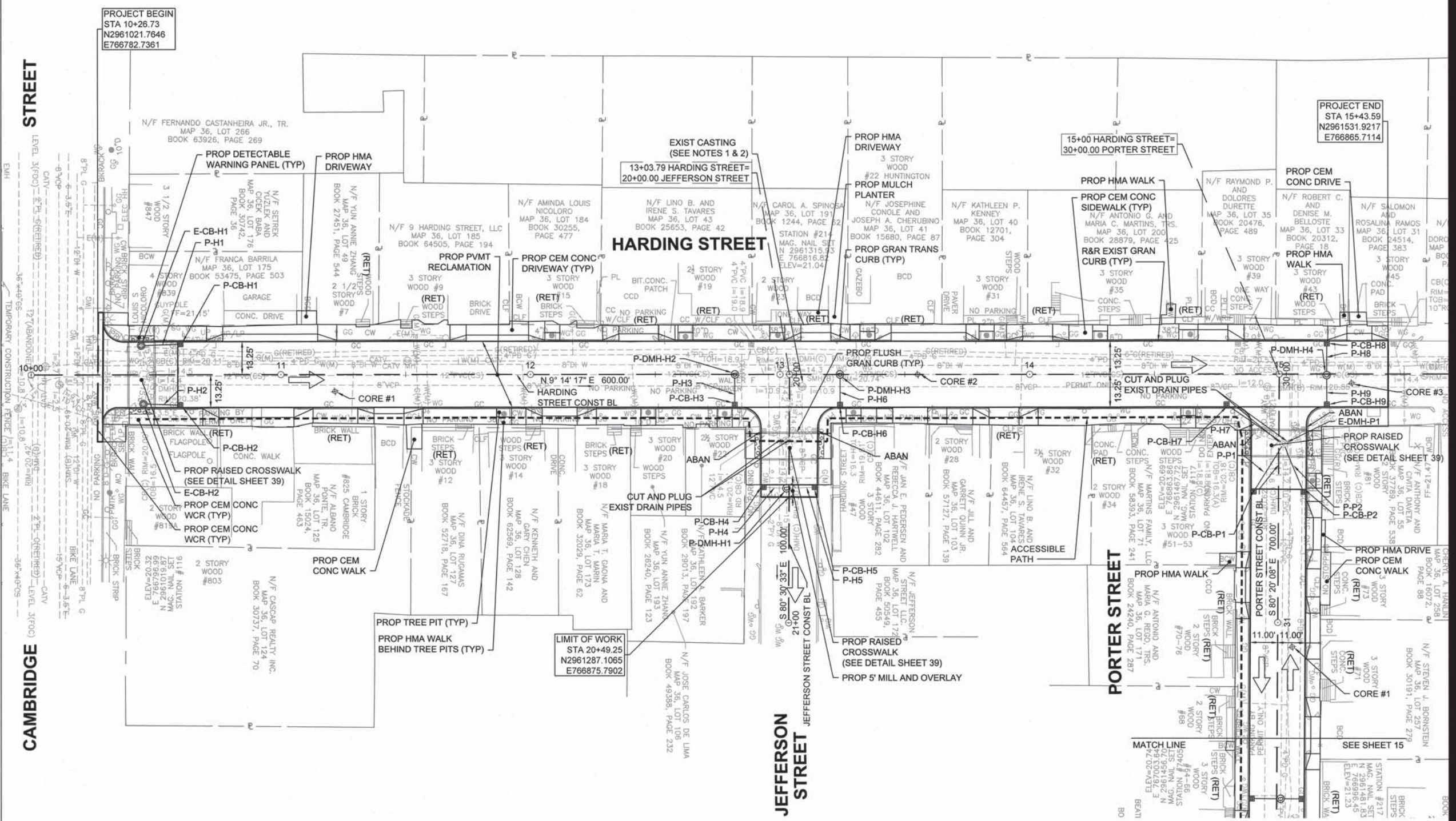
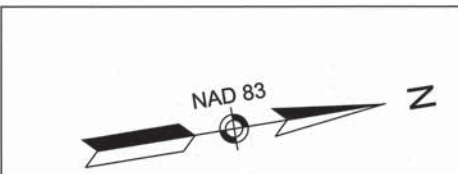
Permit-Seal

Client/Project
Cambridge Department of Public Works

Chapter 90 Contract 21
Lawn St., Kenwood St., Harding St. & Porter St.
Cambridge, MA

Title
CONSTRUCTION PLAN
HARDING STREET / PORTER STREET
PART 1 OF 2

Project No.	Scale	
179410352	1" = 20'	
Drawing No.	Sheet	Revision

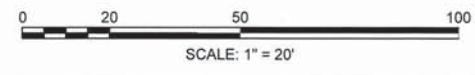


PROJECT BEGIN
STA 10+26.73
N2961021.7646
E766782.7361

PROJECT END
STA 15+43.59
N2961531.9217
E766865.7114

LIMIT OF WORK
STA 20+49.25
N2961287.1065
E766875.7902

- NOTES:
- ALL EXISTING DRAINAGE, SANITARY, WATER AND ANY OTHER MUNICIPAL UTILITY CASTING SHALL BE ADJUSTED TO GRADE BY THE CONTRACTOR.
 - ALL EXISTING PRIVATE UTILITY (GAS, ELECTRIC, COMMUNICATIONS, ETC.) CASTINGS SHALL BE ADJUSTED TO GRADE BY THEIR RESPECTIVE UTILITY COMPANY. THE CONTRACTOR SHALL COORDINATE WORK WITH PRIVATE UTILITY COMPANIES.
 - ALL UTILITY POLES SHALL BE RETAINED.
 - ALL EXISTING TREES SHALL BE RETAINED AND PROTECTED DURING CONSTRUCTION UNLESS OTHERWISE NOTED.
 - FOR ROADWAY PROFILE SEE SHEET 20.
 - FOR CURB GEOMETRY AND BASELINE TIES SEE SHEET 25.
 - FOR PROPOSED GRADING SEE SHEET 30.
 - FOR DRAINAGE STRUCTURE AND PIPE TABLES SEE SHEET 32.
 - FOR SIGNAGE AND PAVEMENT MARKINGS SEE SHEET 36.
 - FOR WHEELCHAIR RAMP AND DRIVEWAY DETAILS SEE SHEETS 44 AND 45.



Consultants

Legend

Notes

Revision	By	Appd.	YY.MM.DD

File Name	DWN	CHKD	DSGN	DATE
porter_harding_const_plans.dwg	DWN	CHKD	DSGN	YY.MM.DD

Permit-Seal

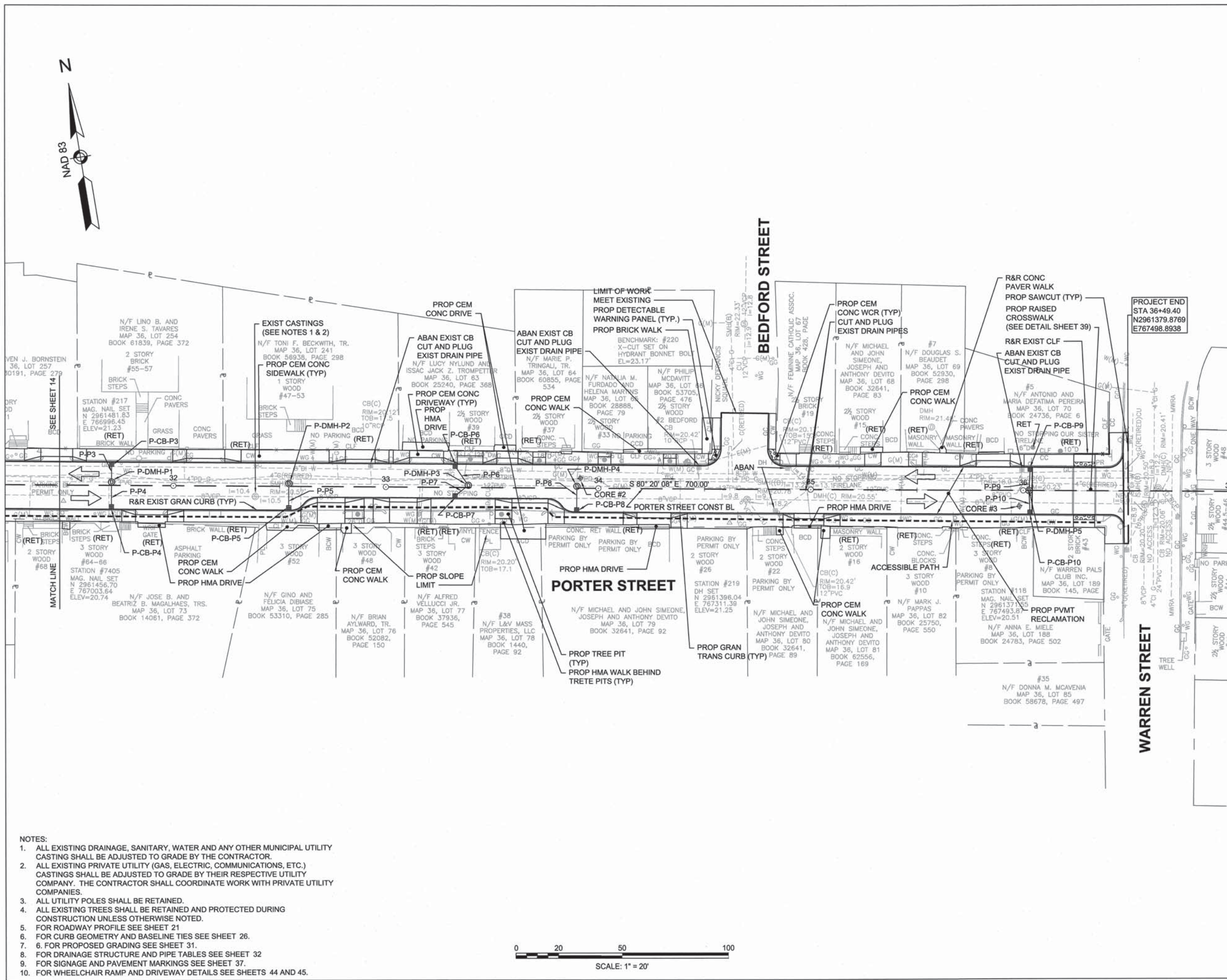


Client/Project
 Cambridge Department of Public Works

Chapter 90 Contract 21
 Lawn St., Kenwood St., Harding St. & Porter St.
 Cambridge, MA

Title
**CONSTRUCTION PLAN
 HARDING STREET / PORTER STREET
 PART 2 OF 2**

Project No.	Scale	
179410352	1" = 20'	
Drawing No.	Sheet	Revision



- NOTES:
- ALL EXISTING DRAINAGE, SANITARY, WATER AND ANY OTHER MUNICIPAL UTILITY CASTING SHALL BE ADJUSTED TO GRADE BY THE CONTRACTOR.
 - ALL EXISTING PRIVATE UTILITY (GAS, ELECTRIC, COMMUNICATIONS, ETC.) CASTINGS SHALL BE ADJUSTED TO GRADE BY THEIR RESPECTIVE UTILITY COMPANY. THE CONTRACTOR SHALL COORDINATE WORK WITH PRIVATE UTILITY COMPANIES.
 - ALL UTILITY POLES SHALL BE RETAINED.
 - ALL EXISTING TREES SHALL BE RETAINED AND PROTECTED DURING CONSTRUCTION UNLESS OTHERWISE NOTED.
 - FOR ROADWAY PROFILE SEE SHEET 21
 - FOR CURB GEOMETRY AND BASELINE TIES SEE SHEET 26.
 - FOR PROPOSED GRADING SEE SHEET 31.
 - FOR DRAINAGE STRUCTURE AND PIPE TABLES SEE SHEET 32
 - FOR SIGNAGE AND PAVEMENT MARKINGS SEE SHEET 37.
 - FOR WHEELCHAIR RAMP AND DRIVEWAY DETAILS SEE SHEETS 44 AND 45.

