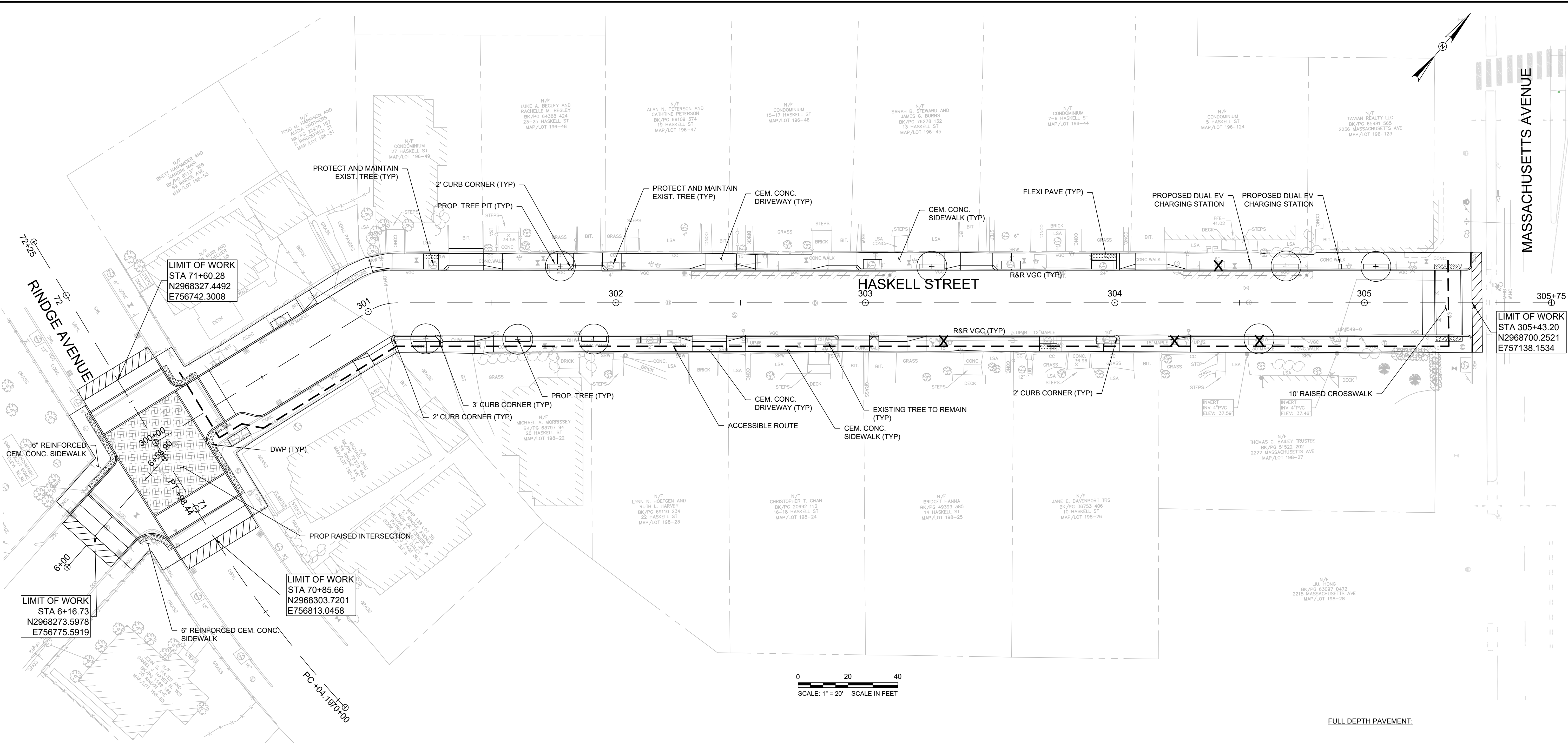
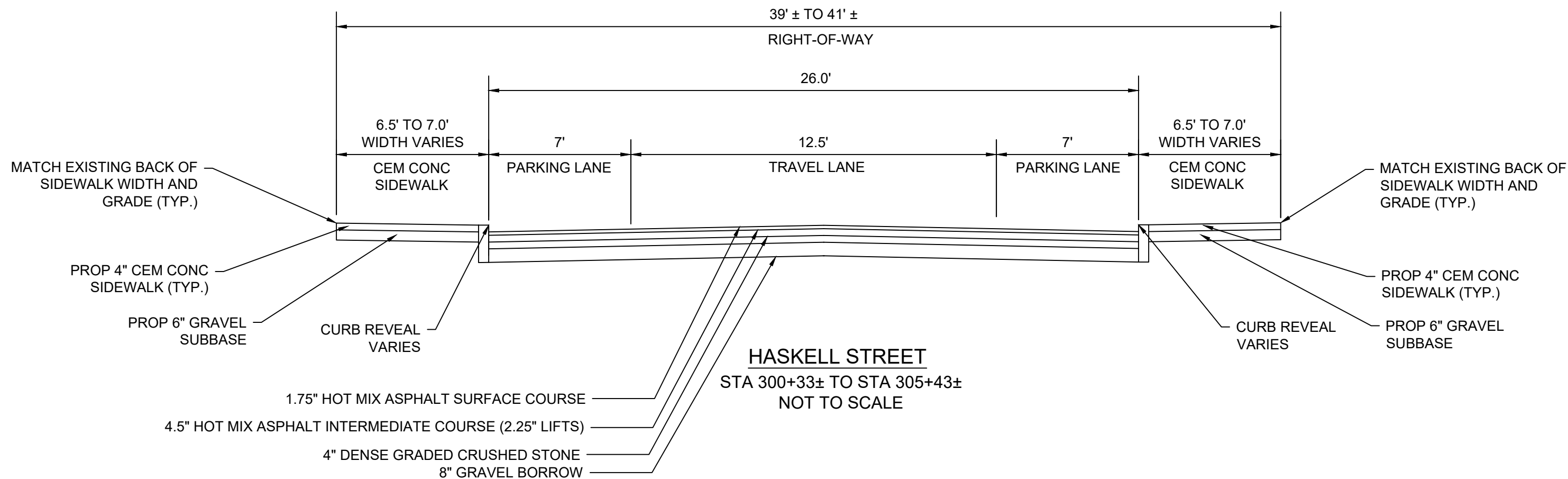


DRAWING PATH: L:\City of Cambridge MA\2023\1168.011A-Cambridge MA-Complete Sits\Working\Drawings\Production Drawings\CONC26\_CONST-HASKELL.dwg



- NOTES:
- CONTRACTOR SHALL ADJUST EXISTING UTILITY COVERS AND CASTINGS TO ALL INTERIM AND FINAL GRADES. CONTRACTOR TO COORDINATE WITH RESPECTIVE UTILITY COMPANIES FOR GAS/TELECOM/CABLE/ELECTRIC.
  - ALL VERTICAL GRANITE CURBING WITHIN WORK LIMITS SHALL BE REMOVED AND RESET UNLESS OTHERWISE NOTED. CURB THAT IS VISIBLY IMPACTED BY ADJACENT TREES AND/OR TREE ROOTS SHALL NOT BE REMOVED WITHOUT AUTHORIZATION FROM THE RESIDENT ENGINEER OR CITY OF CAMBRIDGE.
  - AT LOCATIONS WITH EXISTING TREES TO REMAIN, CONTRACTOR SHALL MAINTAIN 3'-0" MINIMUM WIDE SIDEWALK BETWEEN TREE PIT AND BACK OF SIDEWALK UNLESS SHOWN OTHERWISE ON THE PLANS. AT LOCATIONS WITH PROPOSED OR REPLACED TREES, 4'-0" MINIMUM WIDE SIDEWALK SHALL BE PROVIDED BETWEEN TREE PIT AND BACK OF SIDEWALK.
  - CONTRACTOR TO ADJUST TREE PIT OPENINGS AS NECESSARY TO MAINTAIN A MINIMUM AREA OF 20 SF.
  - ALL EXISTING TREES AND SHRUBS SHALL BE RETAINED UNLESS OTHERWISE NOTED.
  - ALL EXISTING FEATURES AT BACK OF SIDEWALK SHALL REMAIN IN PLACE UNLESS OTHERWISE NOTED. DAMAGES OR DISLODGING OF FEATURES AT BACK OF SIDEWALK SHALL BE REPAIRED/REPLACED AT NO ADDITIONAL COST TO THE PRIVATE PROPERTY OWNER OR CITY OF CAMBRIDGE.
  - CONTRACTOR SHALL MATCH THE EXISTING ROADWAY PAVEMENT GRADE AT THE LIMIT OF PROPOSED PAVEMENT MILLING AND OVERLAY. THE JOINT BETWEEN EXISTING AND PROPOSED PAVEMENT SHALL BE TREATED WITH PAVEMENT SEALANT AND HOT POURED RUBBERIZED ASPHALT SEALER.
  - ALL EXISTING SIGN POSTS SHALL BE REMOVED AND REPLACED UNLESS OTHERWISE NOTED. ALL PROPOSED SIGNS SHALL BE LOCATED A LATERAL CLEARANCE OF 1' FROM THE BACK OF THE CURB BUT NOT LESS THAN 4' FROM THE BACK OF SIDEWALK.
  - AT EXISTING TREE LOCATIONS WITH LARGE, MATURE ROOTS, APPROXIMATE LIMITS OF FLEXI-PAVE ARE INDICATED ON THE DRAWINGS. LIMITS OF FLEXI-PAVE SHALL BE FINALIZED IN THE FIELD BY THE RESIDENT ENGINEER AND CITY OF CAMBRIDGE UPON THE REMOVAL OF THE EXISTING SIDEWALK AND REVIEW OF ROOT LOCATIONS.
  - CONTRACTOR SHALL NOT PERFORM ANY WORK ON PRIVATE PROPERTY UNTIL A SIGNED RIGHT-OF-ENTRY (ROE) IS RECEIVED FROM THE PROPERTY OWNER. THE CONTRACTOR IS RESPONSIBLE FOR COORDINATING ROE WITH THE PROPERTY OWNER
  - CONTRACTOR SHALL MATCH EXISTING GRADE AT BACK OF SIDEWALK LIMITS. REVIEW OF ALL SIDEWALK FORMS SHALL BE COORDINATED WITH THE ENGINEER PRIOR TO PLACEMENT OF CONCRETE FOR LOCATIONS WHERE PRIVATE PROPERTY RESTORATION IS REQUIRED TO MEET DRAINAGE REQUIREMENTS AND BACK OF SIDEWALK GRADE. ALL PRIVATE PROPERTY RESTORATION WORK SHALL BE COORDINATED WITH THE PRIVATE PROPERTY OWNER AND ENGINEER PRIOR TO THE START OF WORK.



FULL DEPTH PAVEMENT:

SURFACE: 1.75" HOT MIX ASPHALT SURFACE COURSE 12.5 (SSC-12.5) OVER 4.5" (2.25" LIFTS) HOT MIX ASPHALT INTERMEDIATE COURSE 19.0 (SIC-19.0) OVER

BASE: 4" DENSE GRADED CRUSHED STONE

SUBBASE: 8" MIN GRAVEL BORROW TYPE b

ASPHALT EMULSION FOR TACK COAT:

ASPHALT EMULSION FOR TACK COAT SHALL BE PLACED ON ALL MILLED SURFACES (APPLICATION RATE=0.07 GAL/SY) AND BETWEEN ALL NEW PAVEMENT LAYERS (APPLICATION RATE=0.05 GAL/SY)

CEMENT CONCRETE SIDEWALK:

SURFACE: 4" CEMENT CONCRETE SIDEWALK OVER

SUBBASE: 6" GRAVEL BORROW TYPE b

CEMENT CONCRETE CURB RAMPS, CEMENT CONCRETE SIDEWALK AT CURB EXTENSIONS, AND DRIVEWAYS:

SURFACE: 6" CEMENT CONCRETE SIDEWALK OVER

SUBBASE: 6" GRAVEL BORROW TYPE b



Bowman

HATCH

Scale	AS NOTED				
Date	FEBRUARY 2025				
Job No.	20231168.011A				
Designed by	JJT/PG				
Drawn by	KAM				
Checked by	BMS	No.	Description	Date	
Approved by	PFB		REVISIONS		



Client	CITY OF CAMBRIDGE, MASSACHUSETTS	Sheet	R-12
Project	COMPLETE STREETS CONTRACT 26 ROADWAY IMPROVEMENT PROJECT	File No.	XXXXX
Drawing	CONSTRUCTION PLAN HASKELL STREET		