

Port Infrastructure Project WORKING GROUP

Meeting #9 | May 7, 2024



CAMBRIDGE
DEPARTMENT
OF PUBLIC
**THE
WORKS**

Welcome!

Remote Participation Instructions

Working Group Members

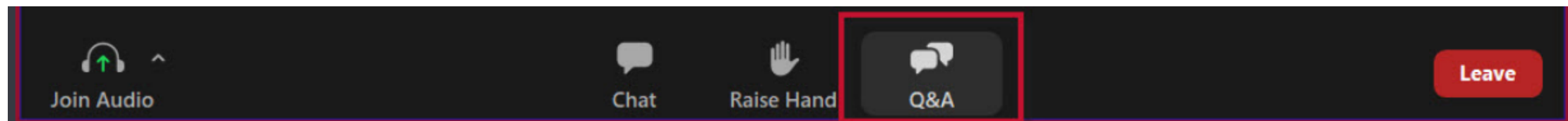
- Participants may speak and show webcam video
- Use “Raise Hand” button during discussion
- Mute your microphone when others are speaking

Members of the Public

- Attendees are muted and cannot show video
- Can write questions and ask for assistance in the Q&A window
- Questions can be submitted at any time and will be addressed, as time allows, after working group member discussion, as well as during public comment

Welcome
Working Group Members!

As you join, please test your mic/video and say hello.



Working Group Members

Tabatha Danyow

Kessen Green

Rev. Dr. Ellis Washington

Marian Darlington-Hope

Ming-Tai Huh

Paul Weaver

Troy Ellerbee

Raghu Krishnan

Divya Errabelli

Idony Lisle

Colin Fleming

Jack O'Hearn

Randa Ghattas

James Pierre



Port Infrastructure Project | WORKING GROUP

Meeting #9 | May 7, 2024



Project Team

City of Cambridge

- **Jerry Friedman**
Project Manager/Supervising Engineer
- **Kristen Kelleher**
Community Relations Manager
- **Kevin Beuttell**
Supervising Landscape Architect
- **Gary Chan**
Neighborhood Planner
- **Lev McCarthy**
Neighborhood Planner
- **Lillian Hsu**
Director of Public Art
- **Charles Creagh**
Transportation Planner

Consultant Team

- Kleinfelder, Inc. - Project lead and engineering
- Consensus Building Institute (CBI) - Facilitation and community engagement
- Stantec – Landscape Architecture

Agenda

- Welcome
- Construction and Investigations Update
- Project Phasing and Schedule Update
- Public Art Update
- EV Charging Update
- Clement Morgan Park Update
 - Review of recent outreach events
 - Preview of park design / alignment with community feedback
- Project Schedule
- Public Comment
- Announcements and Upcoming Events

Construction and Investigations Update



Port Infrastructure Project | WORKING GROUP

Meeting #9 | May 7, 2024



Construction and investigations updates

Harvard Street Construction

- Water Main Installation – **COMPLETE**
- Eversource Electric - **COMPLETE**

Lead Water Service Line Inspections

- Port project area – **ONGOING**

Eversource Gas

- Prospect/Harvard – **complete mid-May**

Project Phasing and Schedule Update



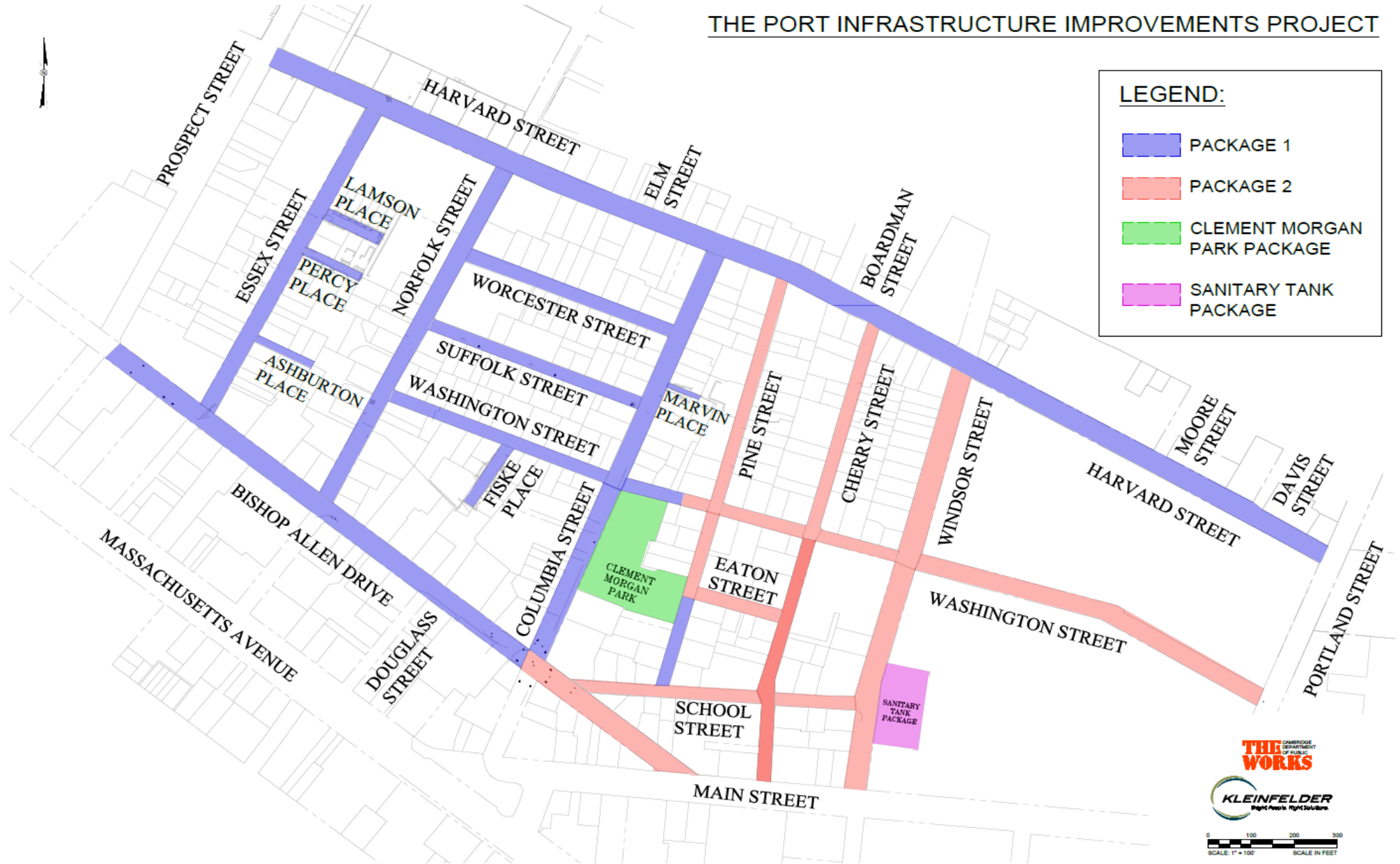
Port Infrastructure Project | WORKING GROUP

Meeting #9 | May 7, 2024




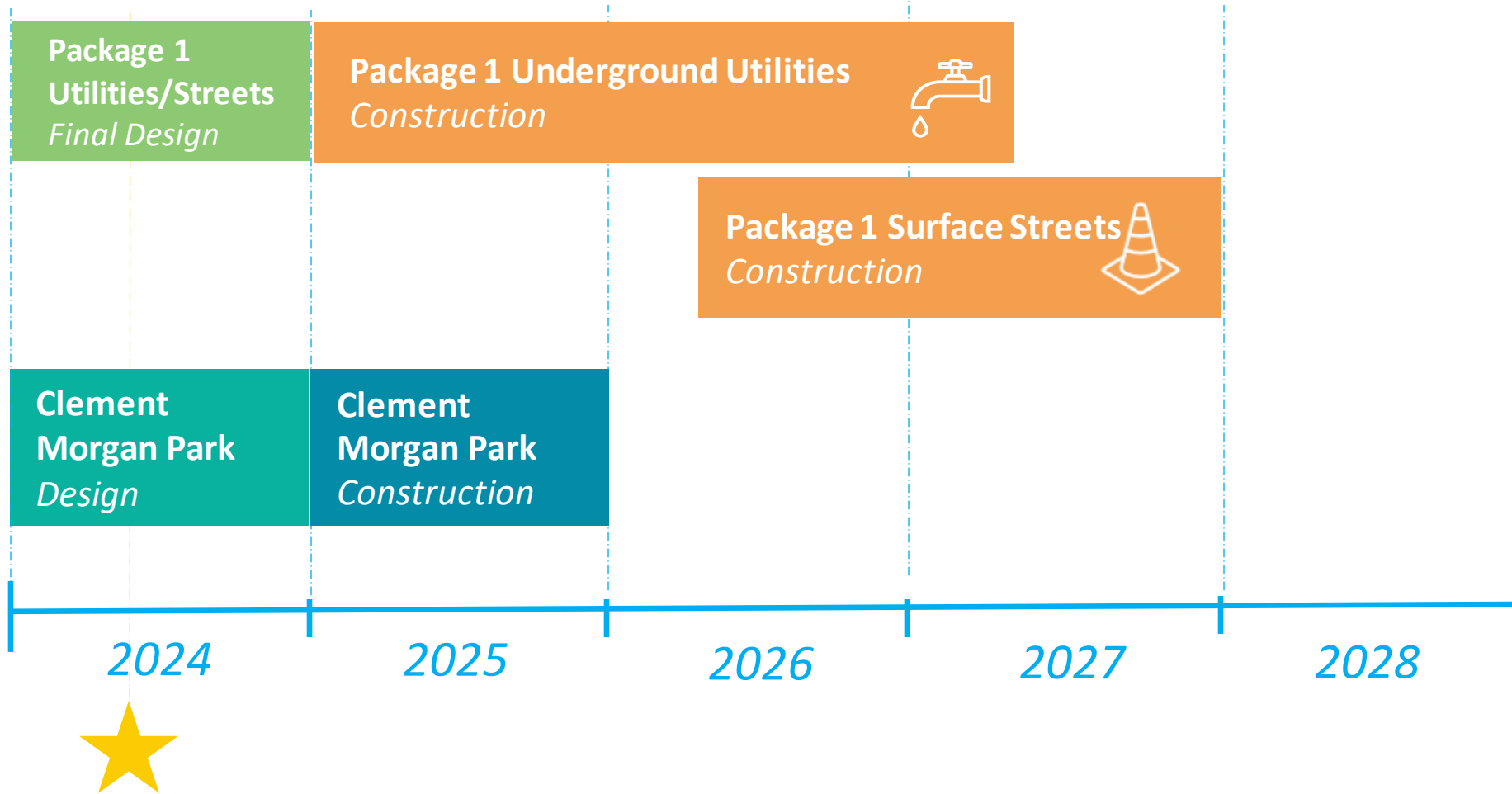
Project Phasing

THE PORT INFRASTRUCTURE IMPROVEMENTS PROJECT




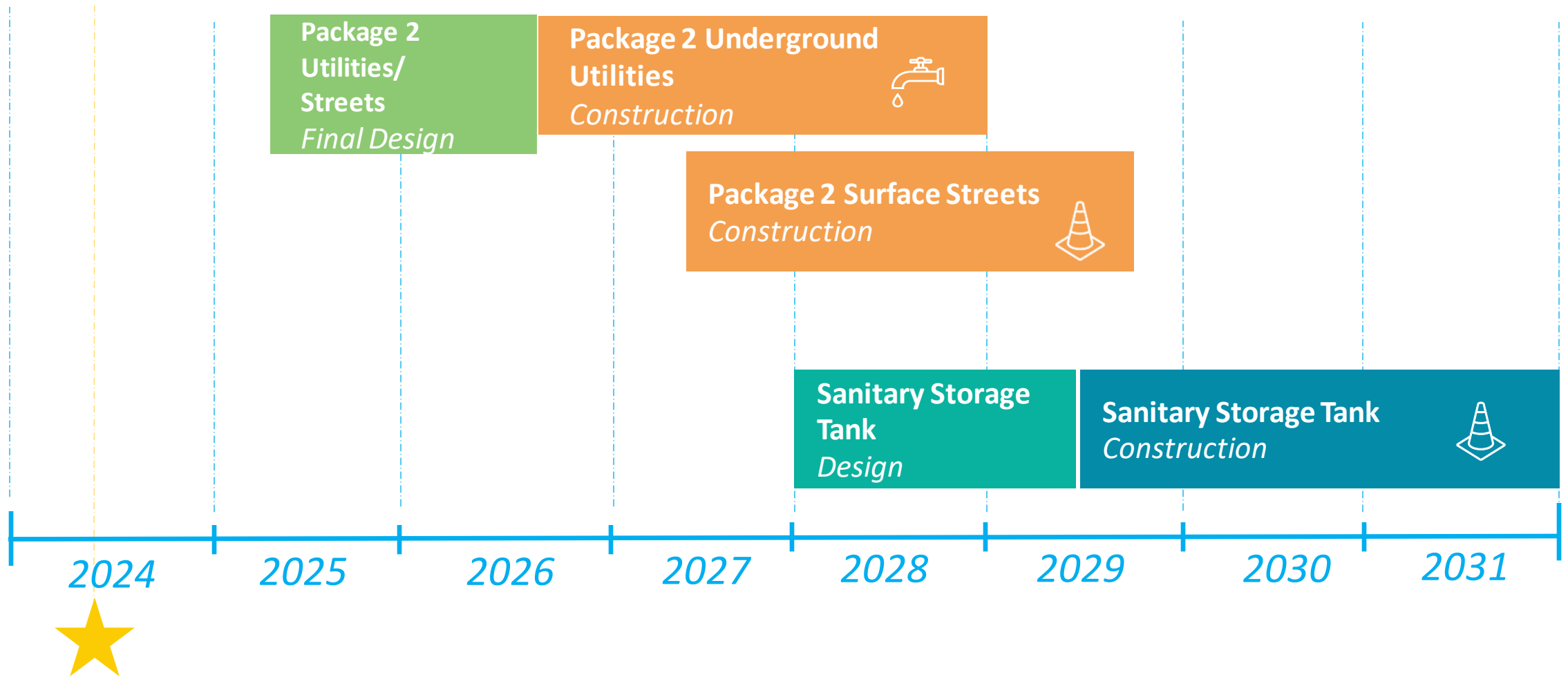
Project Schedule: Package 1 and Clement Morgan Park

 = We are here!



Project Schedule: Package 2 and Sanitary Tank

 = We are here!



Public Art Update



Port Infrastructure Project | WORKING GROUP

Meeting #9 | May 7, 2024



EV Charging Update



Port Infrastructure Project | WORKING GROUP

Meeting #9 | May 7, 2024

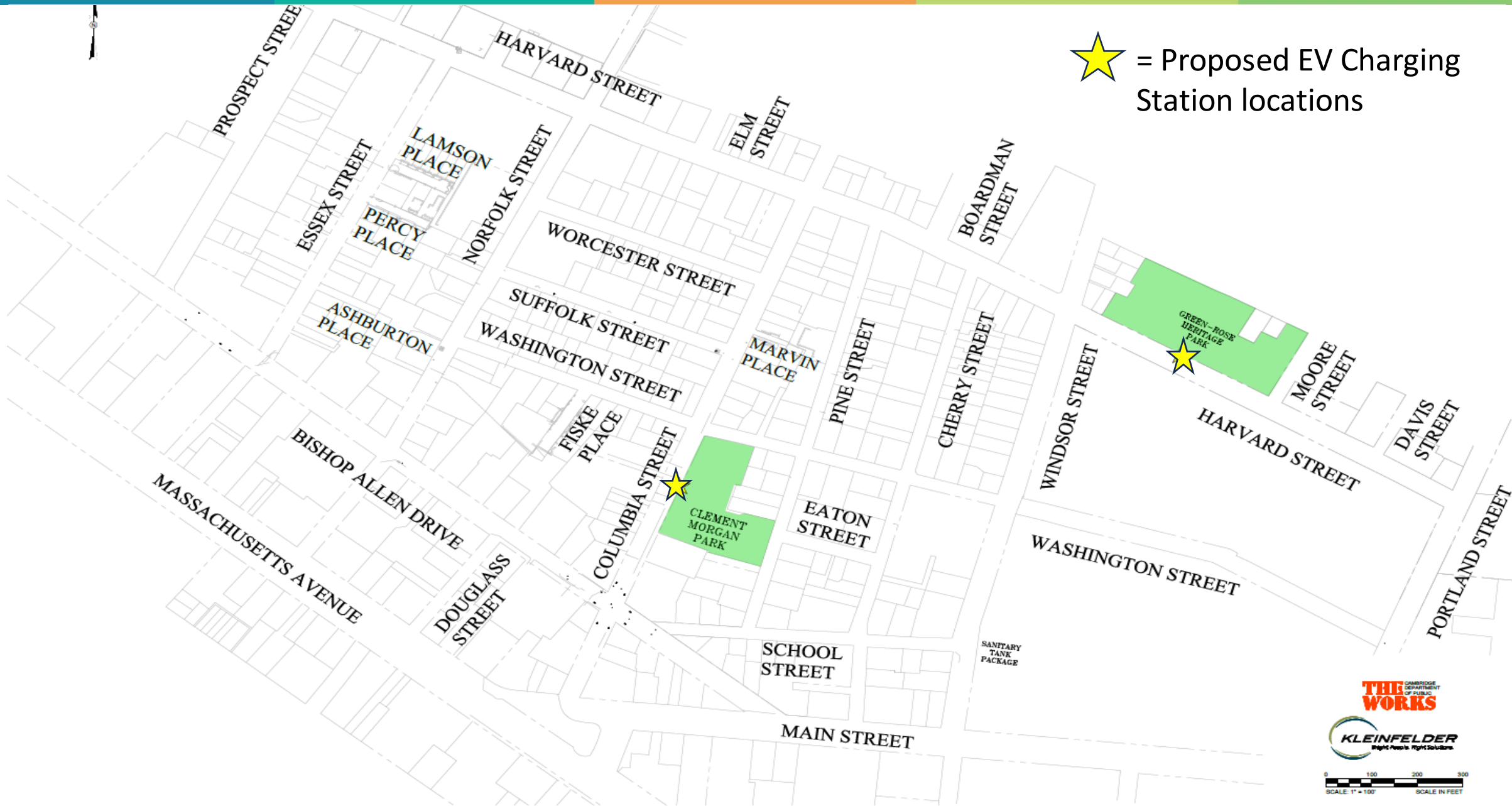


Electric Vehicle (EV) Charging Stations

- Increased access to EV Charging Stations helps with City's goal of lowering greenhouse gas emissions.
- Online tool to collect suggestions for potential locations. - www.cambridgeMA.gov/ElectricVehicles
- Important to offer curbside charging for folks without access to off-street parking.



★ = Proposed EV Charging Station locations



Clement Morgan Park Update



Port Infrastructure Project | WORKING GROUP

Meeting #9 | May 7, 2024



As you view these slides, help us determine:

- Are the design and options clear? Are the images effective?
- Does the design respond to community feedback?
- Anything missing we should be asking about at this phase?

Community Engagement Recap



Since we last met...

**October 2023
Arts in the Park**



**November 2023
Open House**



Next Up...

**May 2024 (Today)
Working Group**



**June 2024
Port Party**

**Sept. 2024
Arts in the Park**

Design Review – Overall Layout



Design Review – Circulation



Design Review – All Ages Play & Splashpad

All Ages/Splashpad Play Feedback

- Preferred larger playground with more swings
- Splash pad in main park, but separated from playground
- Rubber surfacing at water play area
- Consider picnic space with tables within the play space



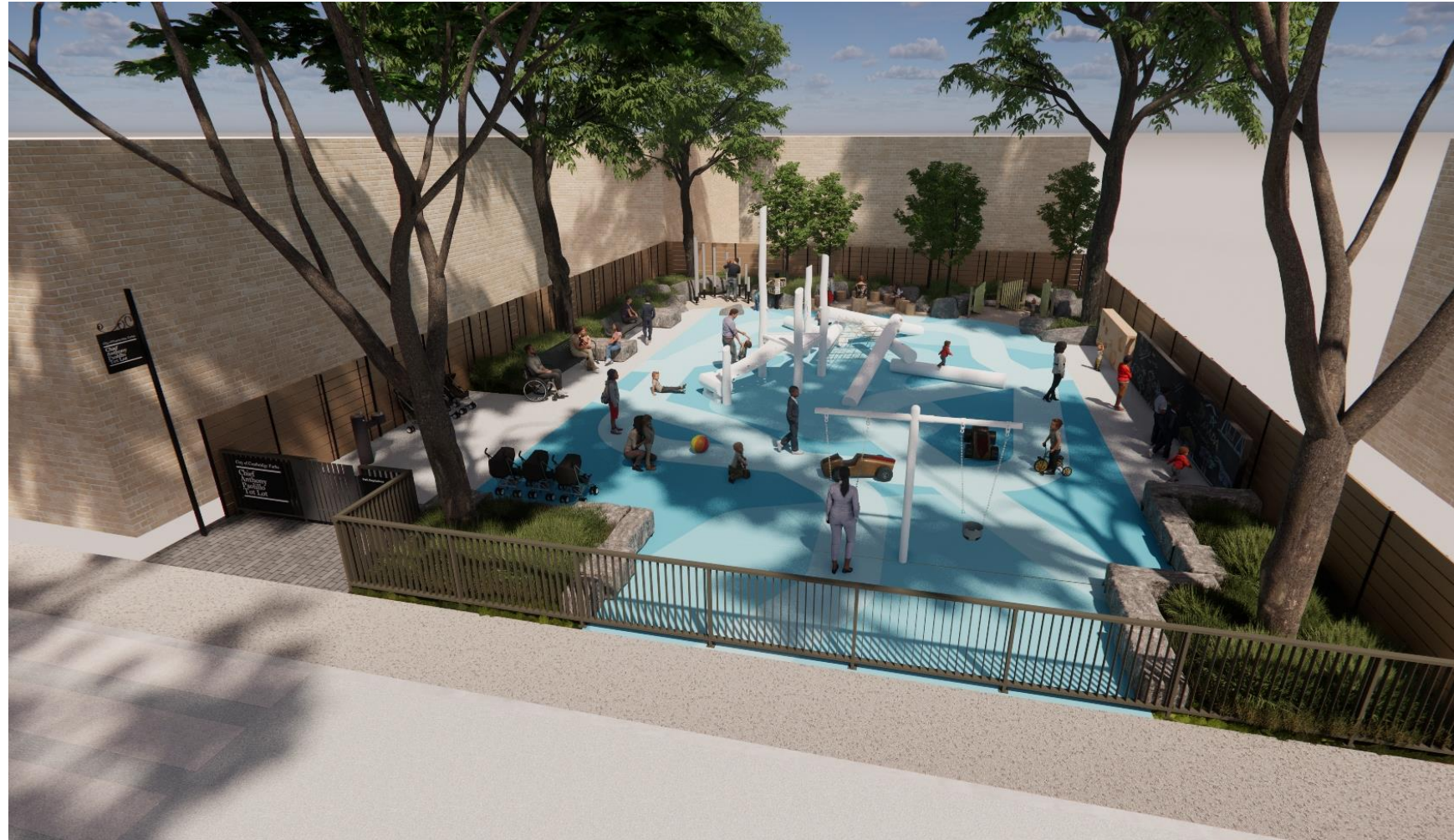


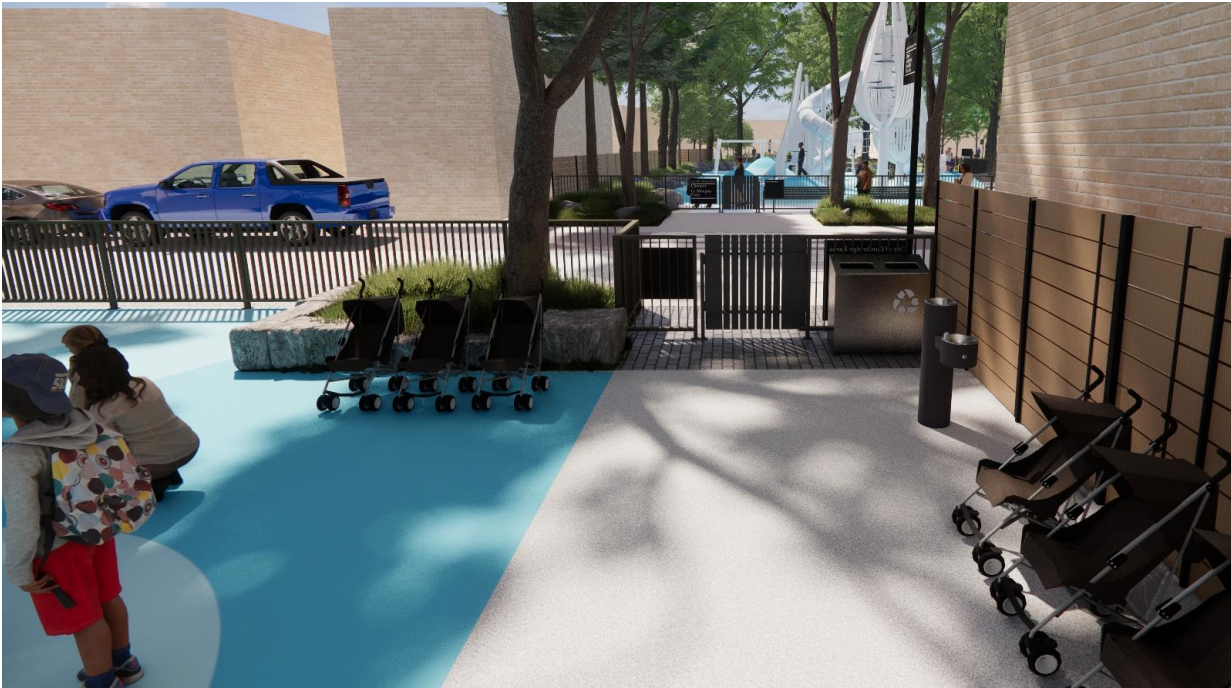
*Playground equipment is shown for illustrative purposes. Equipment choices are pending additional community feedback

Design Review – Tot Lot

Tot Lot Feedback

- Preferred Tot lot stay in current location
- Requested improved visibility and connection across Pine St.





Design Review – Lawn and Dog Run

Lawn/Dog Run Feedback

- Preferred dog run with planted buffer and separate entrance
- Make the lawn more level





Design Review - Plaza

Plaza/Seating Feedback

- Preferred multilevel seating
- Suggested granite threshold to mark paths to help assist with snow removal along paths
- Preserve monument





Design Review – Adult Fitness Area

Adult Fitness Feedback

- Preferred large adult fitness space with new elements like bouldering





Bouldering Equipment



Design Review – Basketball Court

Basketball Feedback

- Preferred to shift basketball court to make room for shade trees and spectator seating along Washington Street







Design Review – Other Community Feedback

- Public restroom
- Trees/plantings
- Reduce fencing along edges of park
- Security and lighting are a priority



Public Restroom

- Maintaining existing evergreens next to court
- Planting ~20 new trees
- Creating habitat for native plant and animal species
- Creating educational opportunities



Planting native species and creating educational opportunities



Natural barriers around park instead of fencing in most areas



Park edge at Columbia St.



Park edge at Pine St.



Park edge at Washington St.

Key areas for community feedback at (and following) our June 4 event

1. Playground equipment
2. Adult fitness equipment
3. Fencing at play area



Options for Feedback: Play Equipment Styles

Sculptural - Wood - Ropes



Traditional - Post & Platform



Ropes – Metal - Plastic



Options for Feedback: Adult Fitness Equipment

Primary fitness equipment: Bouldering



Add a secondary, more traditional fitness station?

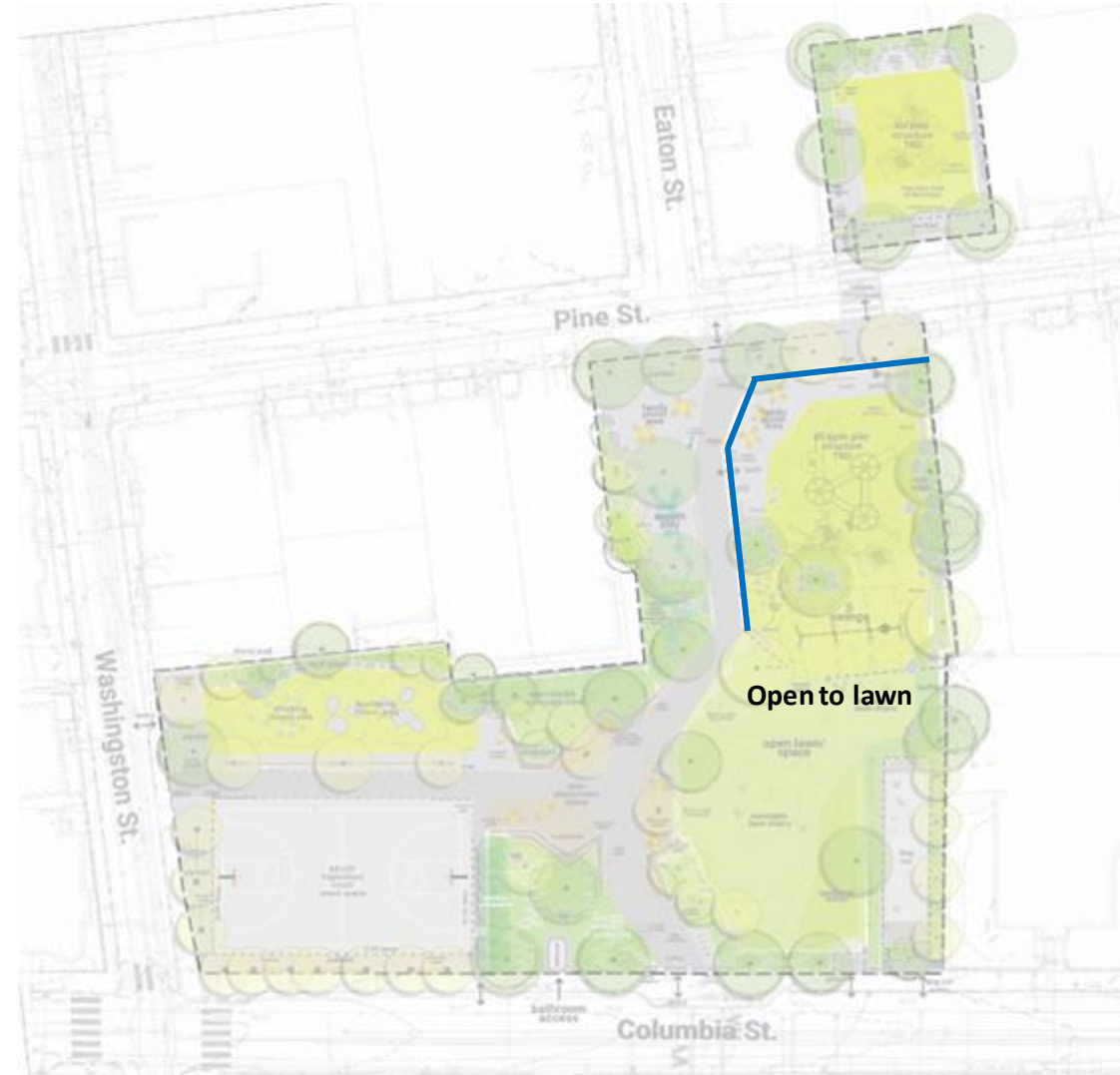


Options for Feedback: Fencing around Play Areas

Full fence at all-ages playground



Partial fence at all-ages playground



Feedback and discussion

- Are the options clear? Are the images effective?
- Are we asking the right questions?
- Anything missing we should be asking about at this phase?
- Any other feedback as we prepare to share these with the community in June?



Public Comment



Port Infrastructure Project | WORKING GROUP

Meeting #9 | May 7, 2024



WG Announcements & Up Ahead



Port Infrastructure Project | WORKING GROUP

Meeting #9 | May 7, 2024



Up Ahead

- **Port Park Party** – Tuesday, June 4, 3-7 p.m.
 - Opportunity for public to see the design and give input
 - Music, Activities, and Treats
- **Arts in the Park** – Saturday, September 28
 - Collaboration with Adius Arts Initiative
 - Showcasing Park redesign
 - Community celebration, tabling



For more information visit:
cambridgema.gov/theport

Jerry Friedman, Supervising Engineer
jfriedman@cambridgema.gov | 617.349.9720

Kristen Kelleher, Community Relations Manager
kkelleher@cambridgema.gov | 617.349.4825

COMMENTS & QUESTIONS?



Port Infrastructure Project | WORKING GROUP

Meeting #9 | May 7, 2024

