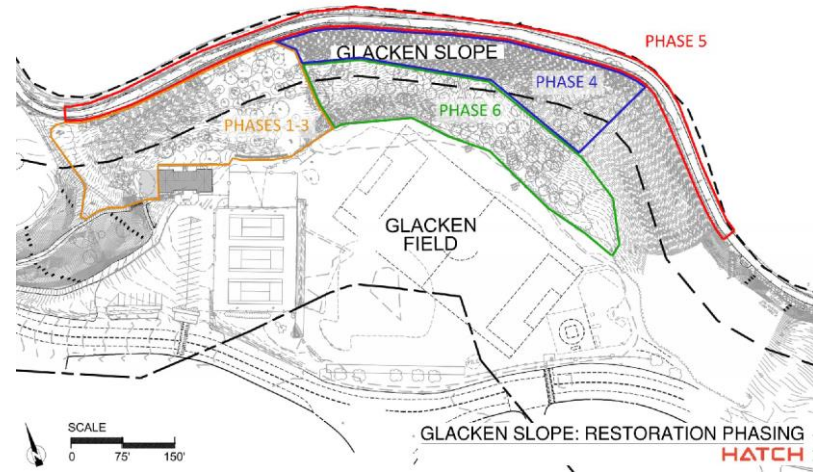


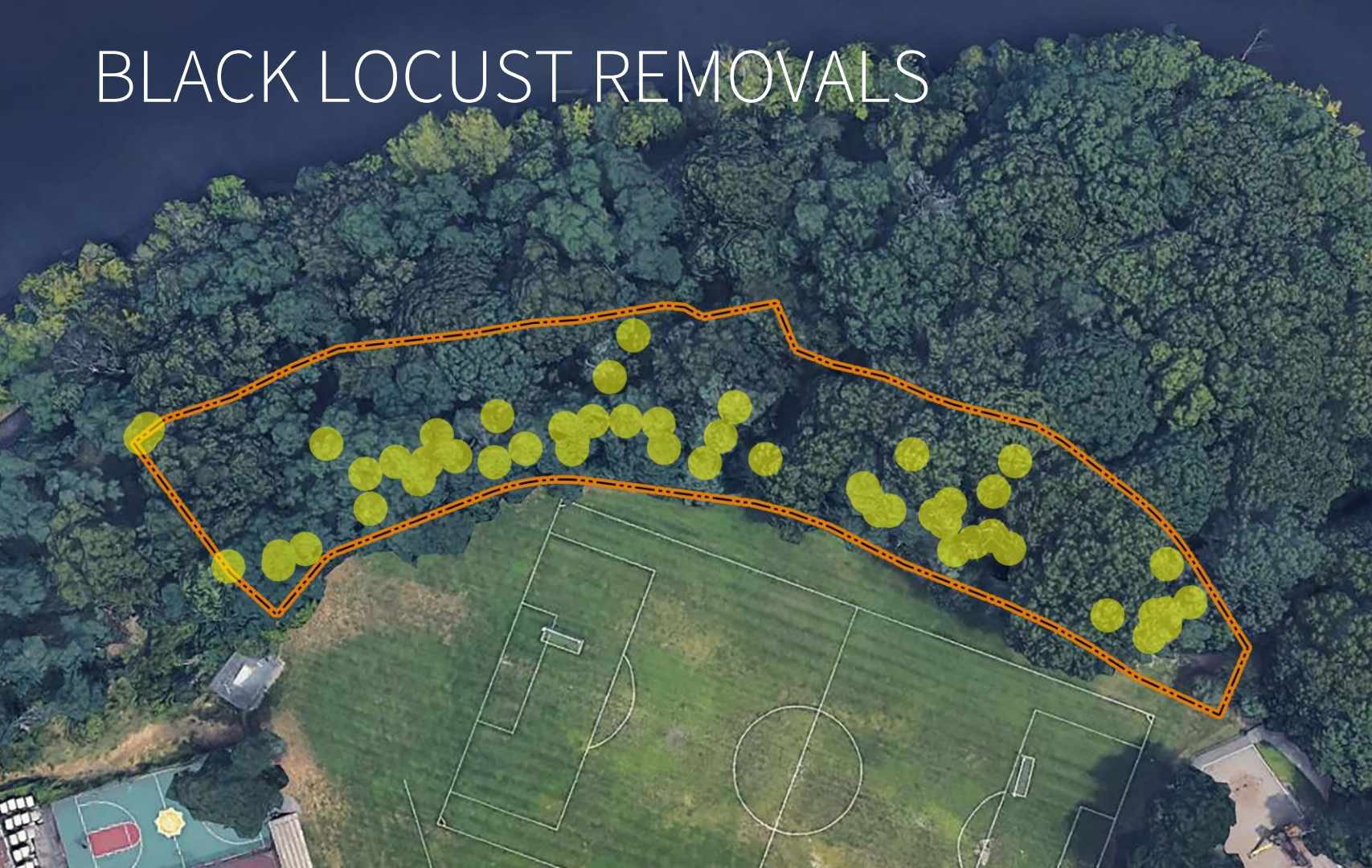
GLACKEN SLOPE RESTORATION PROJECT

Project History:

1. Added to Glacken Field project in December 2019.
2. Builds on Glacken Slope Phases 1-5 (2009 to present).
3. Presentation to FPAB in January 2020.
4. Invasive tree removal June 2020.
5. Begin construction July 2020.



BLACK LOCUST REMOVALS



GLACKEN SLOPE RESTORATION PROJECT



GLACKEN SLOPE RESTORATION PROJECT

Native Restoration Plantings:

1. 112 Canopy Trees.
2. 38 Understory Trees.
3. 362 Shrubs.
4. 1,900 Groundcovers, Wildflowers and Graminoids.
5. Woodland Seed Mix.



BEFORE AND AFTER PHOTOS



GLACKEN SLOPE RESTORATION PROJECT

Next Steps:

1. Install 750 Bare Root Plantings – marginal wood fern, Canadian ginger, and bracken fern.
2. Dormant seeding of Woodland Mix.
3. 1-year invasive removal and plant guarantee.



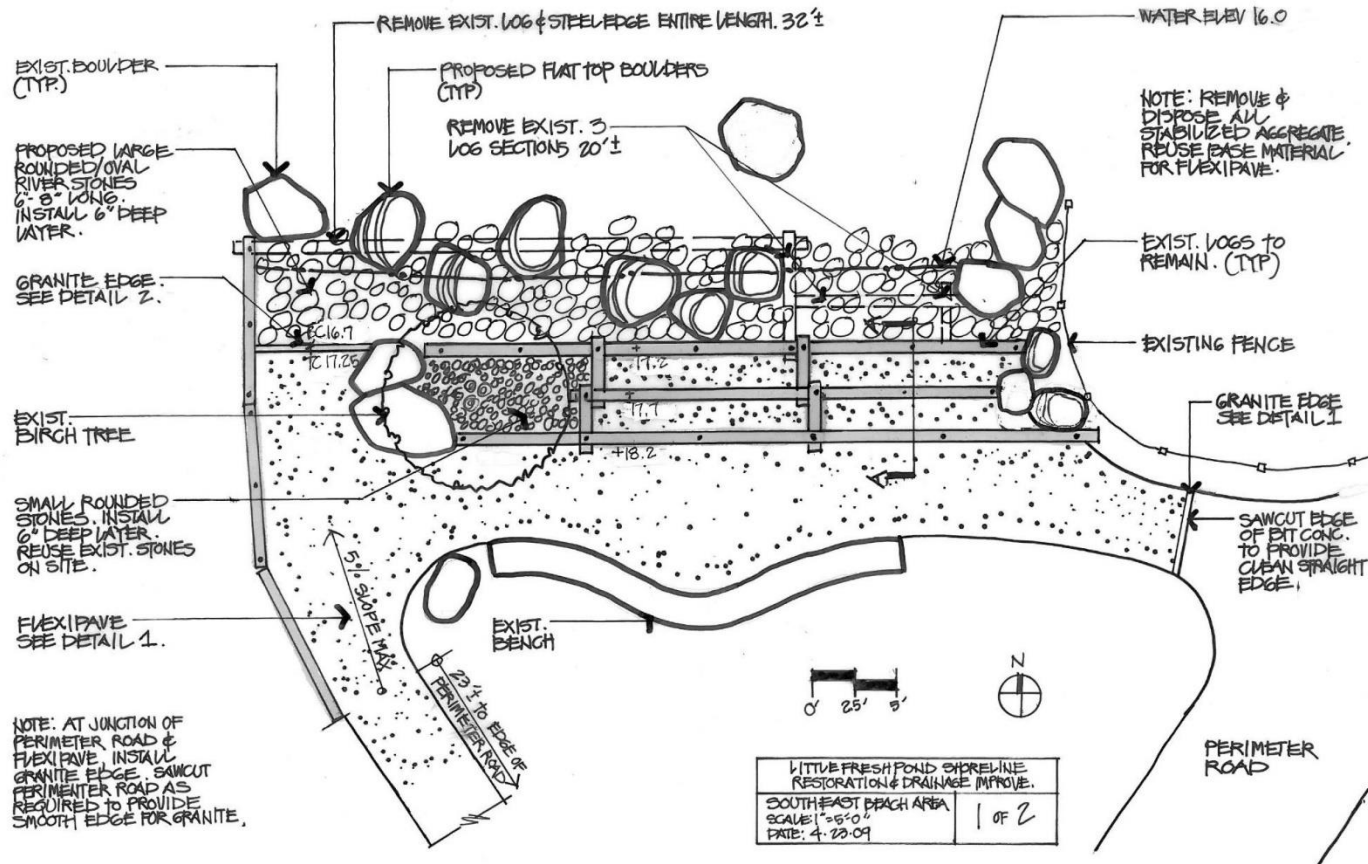
LITTLE FRESH POND – POND ACCESS

History:

1. Constructed in 2007 as part of LFP Restoration project.
2. Small retrofit in 2009.
3. Heavily used access point for dogs.
4. Ipe/boulder bench designed by Mitch Ryerson.



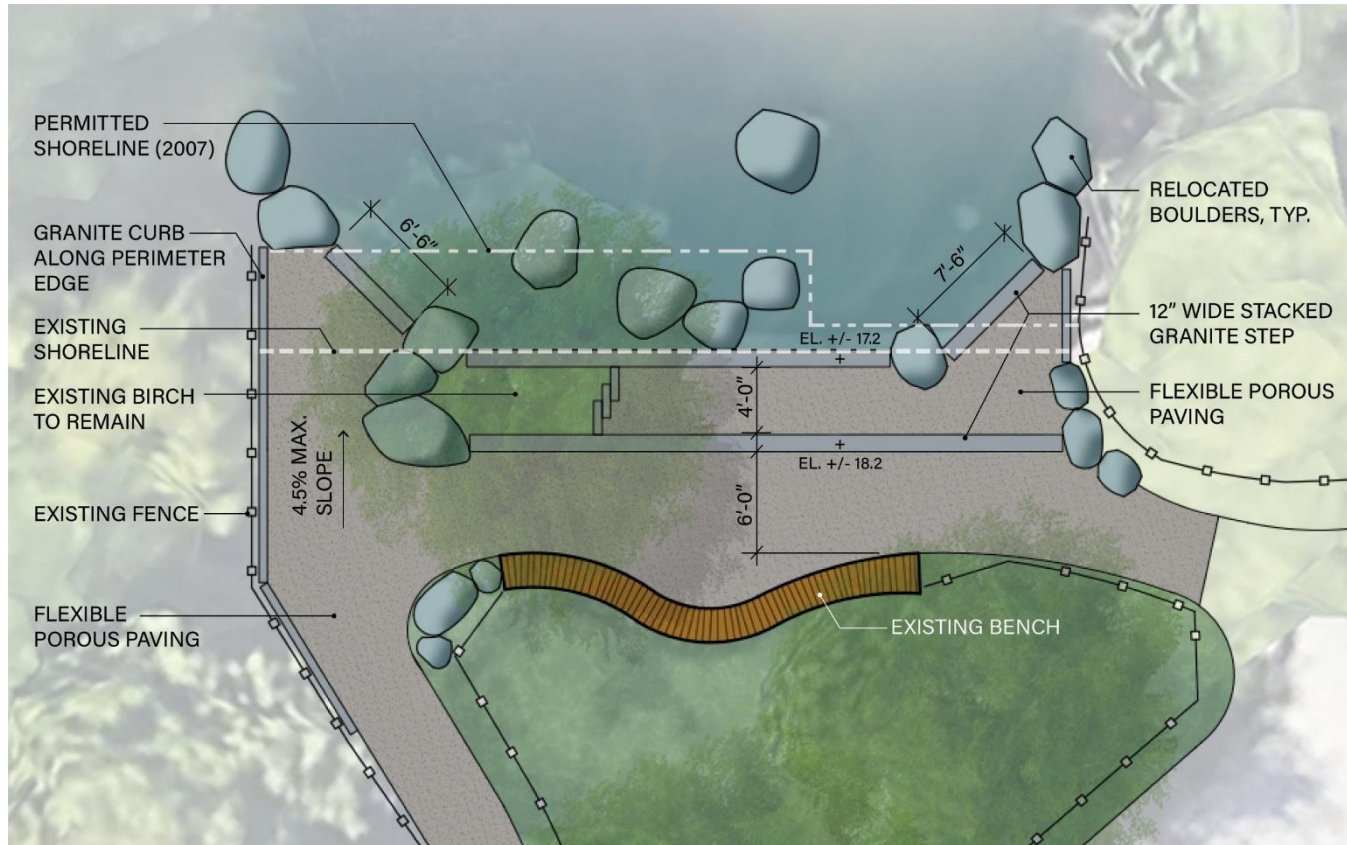
LITTLE FRESH POND – 2009 RETROFIT

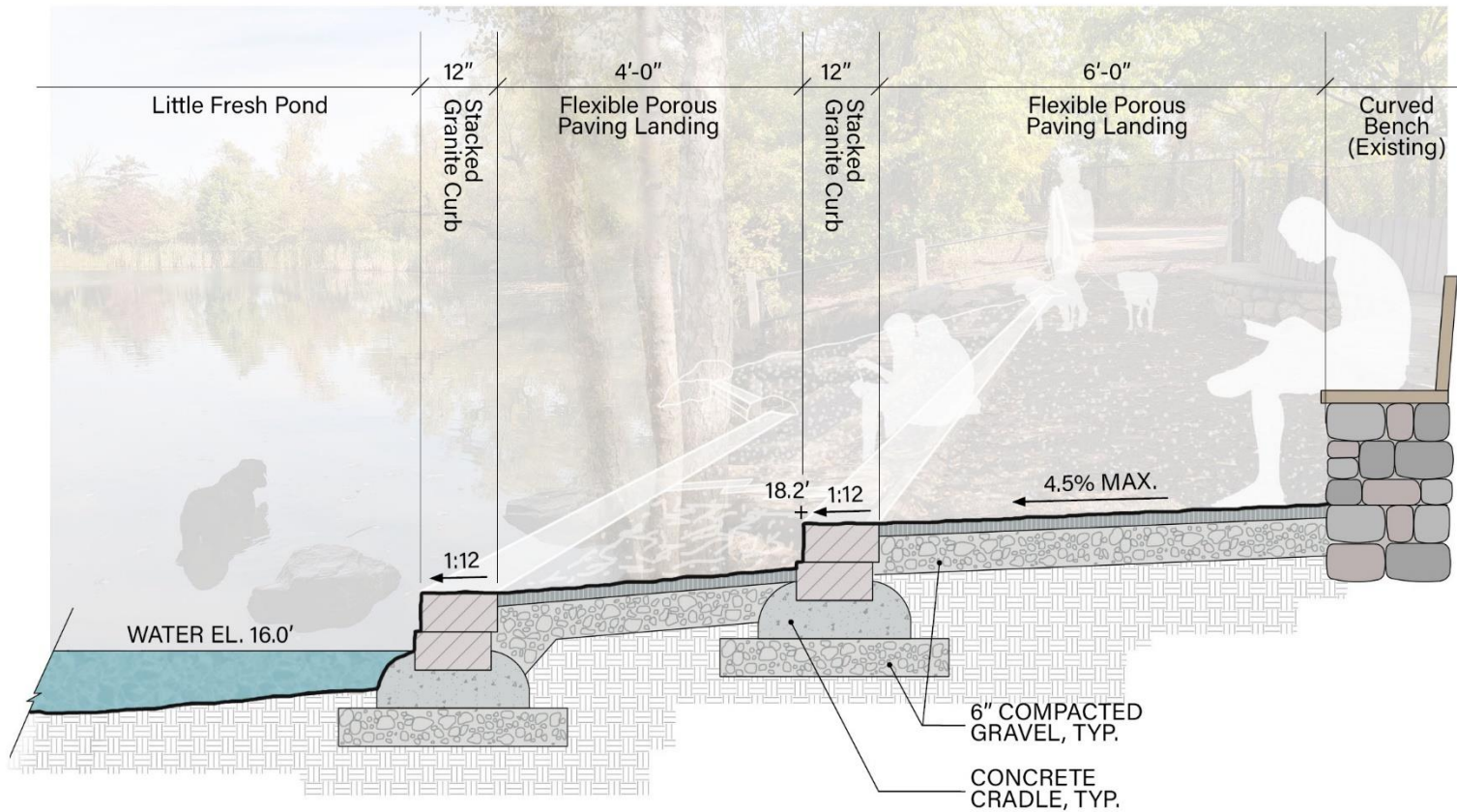


LITTLE FRESH POND – EXISTING CONDITIONS



LITTLE FRESH POND – CONCEPT PLAN





TYPICAL SECTION AT LITTLE FRESH POND DOG BEACH

N.T.S.



EXISTING CONDITIONS

Little Fresh Pond Dog Beach



PERSPECTIVE PHOTOMONTAGE

Little Fresh Pond Dog Beach

PINE GROVE ASSESSMENT

Project History:

1. Visual Assessment September and October 2019.
2. Requires updated topo survey for slopes, paths, soils and drainage.
3. Vegetation analysis distinguishes Inner Pine Grove habitat versus Edge habitat.



PINE GROVE ASSESSMENT

Overstory/Canopy:

1. Core samples – 80 to 100 years old.
2. White Pines possible transplants from Kingsley Park.
3. No white pine saplings, seedlings, or pine cones observed.
4. Very few oaks observed.



PINE GROVE ASSESSMENT

Understory (Woody):

1. Gaps in canopy promote invasive tree and shrub growth.
2. Dominant species buckthorn, Norway maple and black cherry.
3. Subdominant species include hornbeam, black birch, black walnut, mountain ash, ground hemlock, honeysuckle, and Russian olive.



PINE GROVE ASSESSMENT

Understory (Herbaceous):

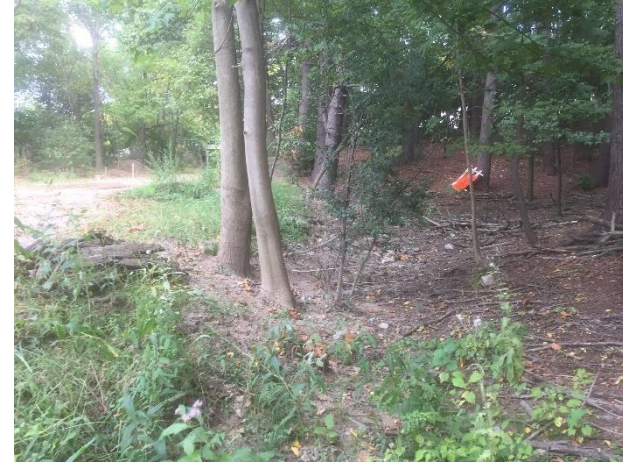
1. Dominant species include Lily of the Valley (introduced) and poison ivy (native).
2. Subdominant species include white wood aster, nightshade, false Solomon's seal, avens, Virginia creeper, and pokeweed.
3. Red maple and black cherry seedlings.



PINE GROVE ASSESSMENT

Edge Habitat – Trees and Shrubs:

1. Same species as Pine Grove.
2. Additional native species include slippery elm, bird cherry, sugar maple, N. red oak, black locust, white ash, and shagbark hickory.
3. Additional non-native species include tree of heaven, red mulberry, and Japanese knotweed.



PINE GROVE ASSESSMENT

Edge Habitat - Groundcovers:

1. Same species as Pine Grove.
2. Additional native species include three-sided mercury & jewelweed.
3. Additional non-native species include celandine, goutweed, garlic mustard, and ragweed.

