




# 2025 Landscape Report Fresh Pond Golf Course



A photograph of a golf course at sunset. The sun is low on the horizon, casting a warm orange and yellow glow across the sky and the green grass. A flag on a pole is visible on the right side of the green. The text is overlaid in the center of the image.

2024 Usage  
Soil Program  
Trees & Invasive Work  
Buffers and Bridges  
Paul Ryder's Club House



A photograph of a golf course at sunset. The sky is a mix of purple, pink, and blue. The sun is low on the horizon, creating a bright glow. In the foreground, there is a green golf course with a white flag on a pole. The background shows trees and a distant building.

In 2024 over **54,000** rounds  
of golf were played at the Fresh Pond Golf  
Course. (+4,000)

Which is more than average for the area. . .

**Belmont Country Club** (Belmont) 15,000 rounds

**Charles River** (Newton) 32,000 rounds

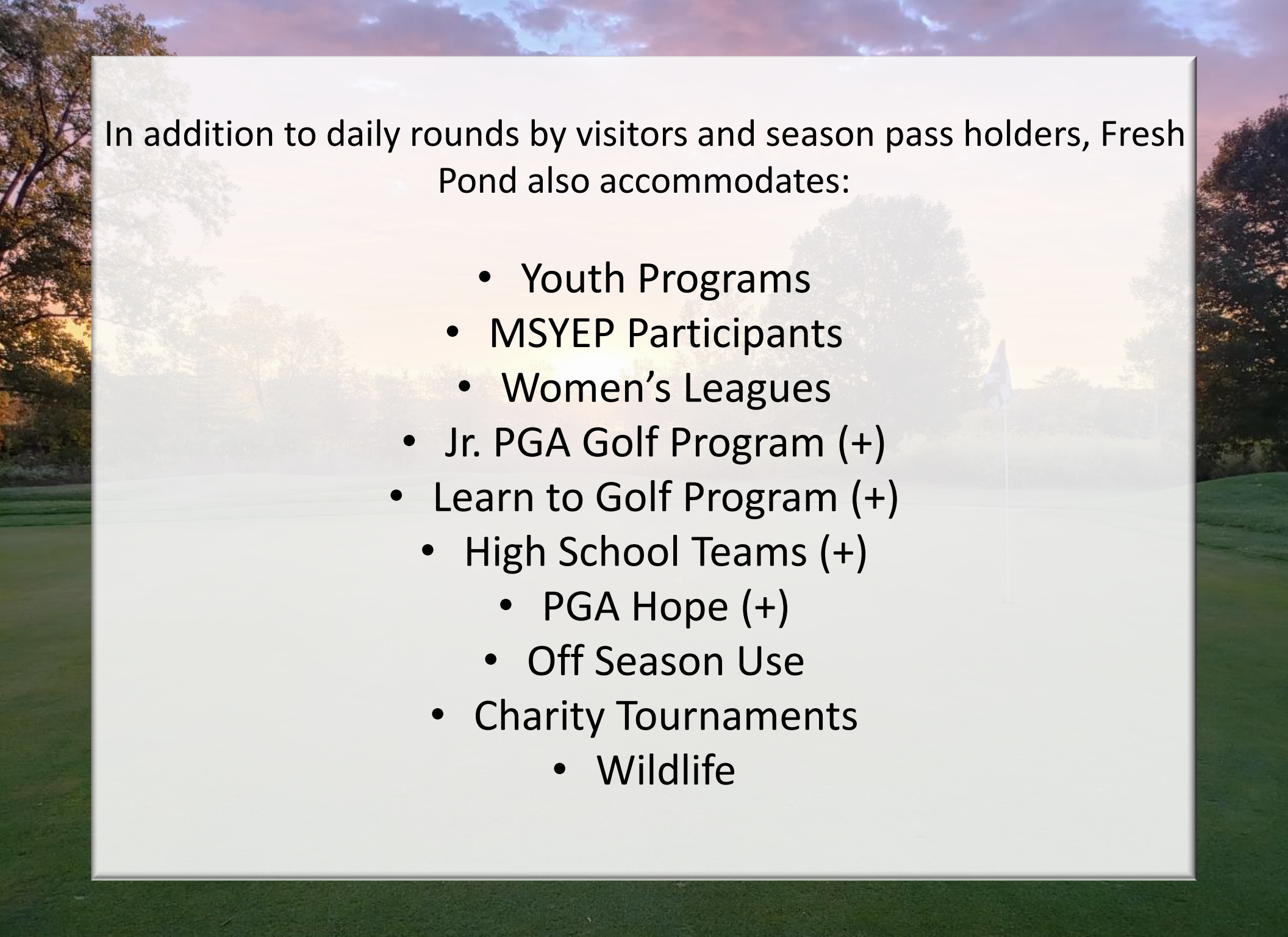
**Franklin Park** (Boston) 50,000 rounds

**Vineyard Club** (Martha's Vineyard) 12,000 rounds

**George Wright** (Boston) 50,000 rounds

**Robert T. Lynch** (Brookline) 32,000 rounds





In addition to daily rounds by visitors and season pass holders, Fresh Pond also accommodates:

- Youth Programs
- MSYEP Participants
- Women's Leagues
- Jr. PGA Golf Program (+)
- Learn to Golf Program (+)
- High School Teams (+)
  - PGA Hope (+)
  - Off Season Use
- Charity Tournaments
  - Wildlife



## **Golf, as a sport, impacts how we care for the course.**

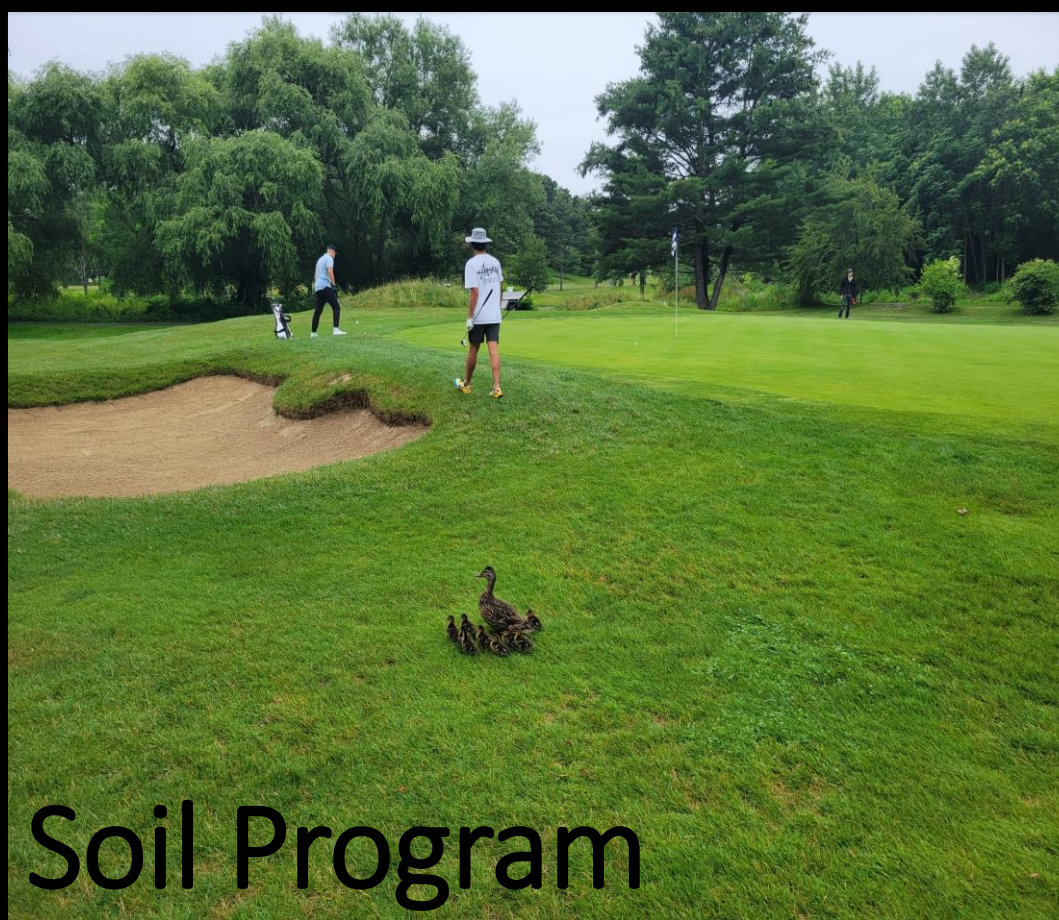
### **Like other Sports and Playing Fields. . .**

- Golf requires a variety of consistent playing surfaces.
- Consistent playing surfaces need to be maintained to hold up through a multitude of weather conditions in spring, summer and fall.

### **Unlike other Sports and Playing Fields. . .**

- Golf is a pivot sport that involves players striking through the turf and causing damage on most shots.
- Fresh Pond, the only site to play golf in the city, needs to be maintained to accommodate all levels of play.
  - Invasives, pests, and root depth deeply impact play
- More than 11 acres of turf at fresh pond need be cut lower than 3" for play.





# Soil Program

To properly maintain the golf course our goal is to build the soil biology to:

- Promote Environmental Health
- Maintain a Dense Turf Stand
  - Outgrow Disease
- Maintain Course Playability

Our staff go about achieving our goals through:

- Nutrition
- Cultural Practices
- Approved Applications
- Collaboration, Standards, and Tools

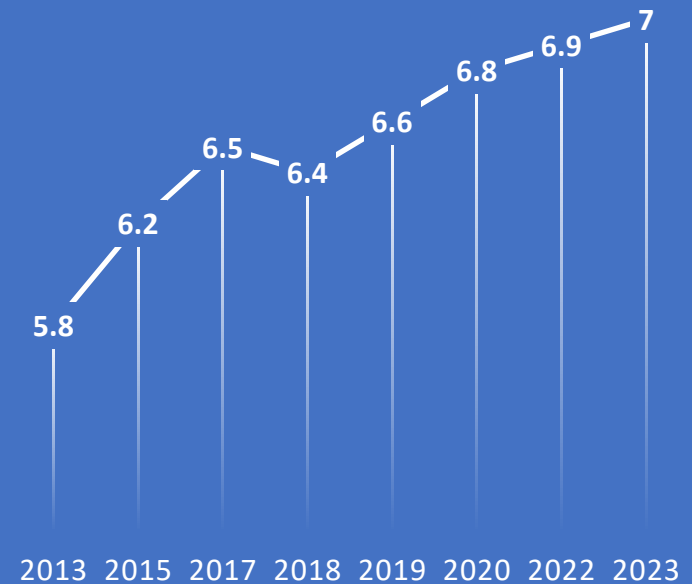


# Nutrition

Soil nutrition is a keystone of our maintenance practices. The following illustrates how we currently feed our turf. This has enhanced the growing conditions on the course, including on the 9<sup>th</sup> green where we've been able to increase the PH from 5.8 in 2013 to 7.0 in 2023

- 17 essential nutrients for turf growth
- Macronutrients – N,P,K,C,H,O,Ca,Mg,S
- Micronutrients – Fe,Mn,Zn,B,Mo,Cu,Cl,Ni
- Soil testing
- MA State fertilizer guidelines
- SeaBlend fertilizer
- Building soil biology
- Outgrow of disease

## SOIL PH 9 GREEN

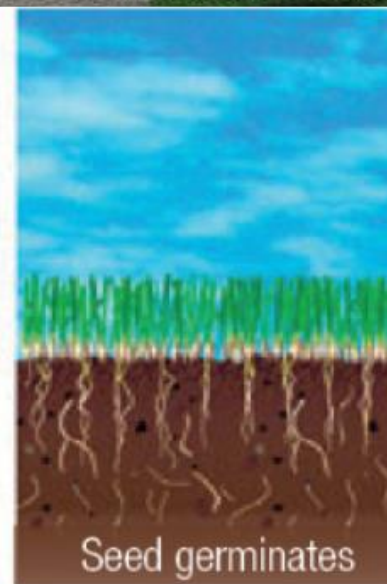




# Cultural Practices

The best way to limit applications & inputs is a solid overseeding program

- Aerating
- Topdressing
- Overseeding new grass types
- Higher heights of cut
- Closed course Monday mornings
- Deep and infrequent irrigation
- Scouting



HOW IT WORKS



An aerial photograph of a golf course. In the upper left, a calm lake reflects the sky. The course is lush green with several sand traps and is bordered by a dense line of trees with some autumn-colored foliage. A winding path or road is visible on the right side of the image.

**We expanded our program on putting greens to include soil testing and nutrition on fairways and tee boxes.**

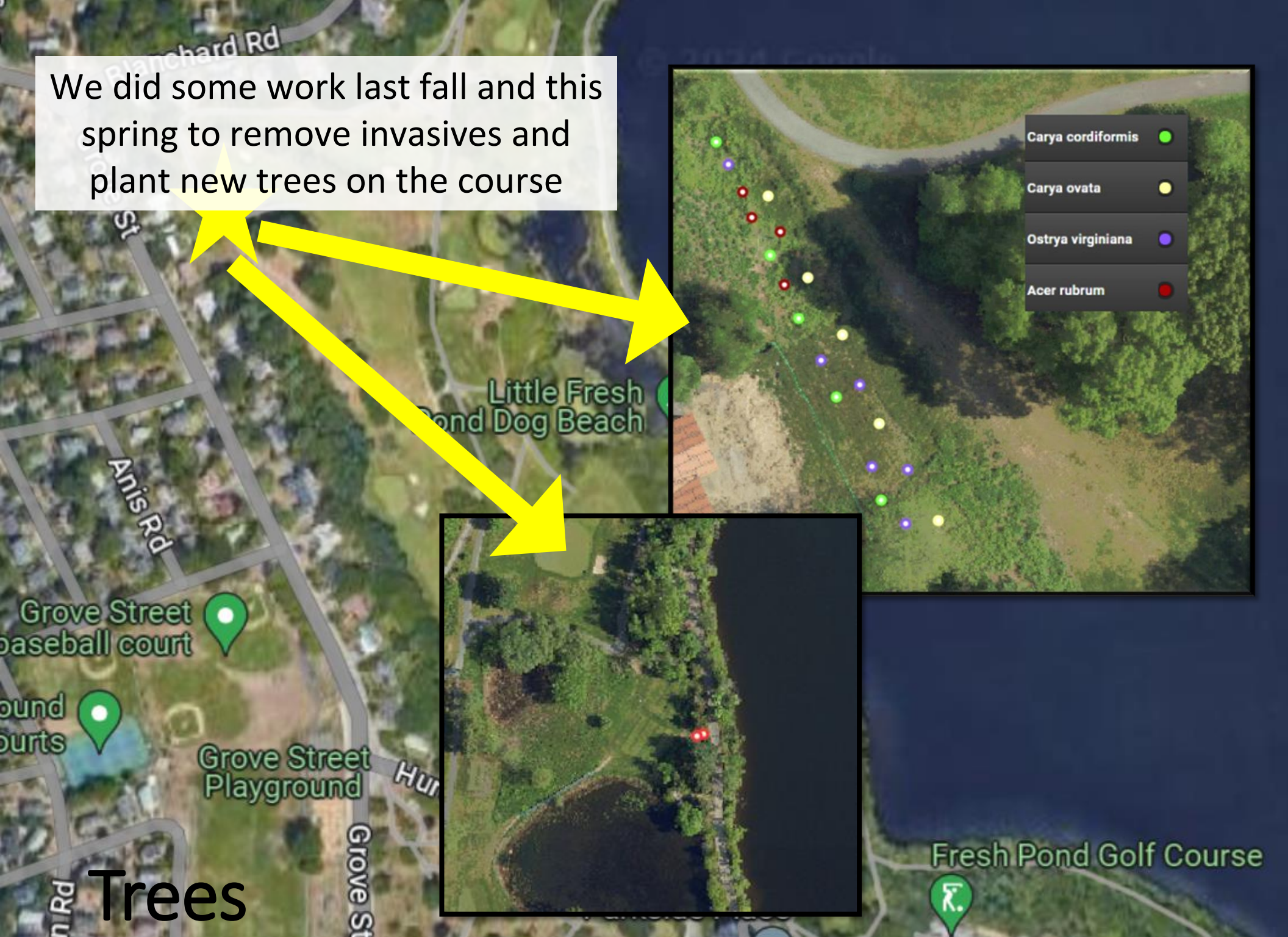
This spring we retained the services of Kleinfelder with Pine and Swallow to review our methods, materials, and soil sample results.

**Highlights....**

- Core sampling on all putting greens, tee box complexes, fairways (spring & fall).
- We took 10 soil cores at a 4” depth from problem areas throughout the course.
- Results are being reviewed by City staff and Pine and Swallow and will be used to inform how we continue to build the soil profile. The final draft of that report is being circulated.
- We will continue to review our methods and materials throughout the season and use Cornell’s Environmental Impact Quotient (EIQ) to ensure we are using sound methods for care.



We did some work last fall and this spring to remove invasives and plant new trees on the course



Trees



## Invasive Plant Management

State recognized invasives such as Japanese knotweed and Purple loosestrife have been identified in the on and near the practice green, 1<sup>st</sup> and 9<sup>th</sup> hole.

On the 1st Hole Green, the 2023 restoration of a steep slope after tree removal and new seeding was not fully successful, as invasive species have returned.

Ideally, we would clear these hillsides out and plant fescue in these areas.

“Naturally deep-rooted grasses that establish quickly, such as turf-type tall fescue grasses, are excellent choices for erosion-prone spots. Fast-germinating annual and perennial ryegrasses help stabilize slopes quickly and control erosion while deeper rooted grasses become established and take hold.”





Fresh Pond Golf Course complies with United States Golf Association (USGA ) standards (spacing, visibility, color, hazards, etc.) for staking as of the end of 2024 season

**White –**

Out of bounds

**Yellow**

Water hazard

**Red**

- Lateral hazard

**Green**


Environmentally Sensitive Area (ESA)

**Red Stake with Green Top**

ESA and hazard







The new bridge between the 1<sup>st</sup> and 9<sup>th</sup> Fairway was finished and golfers and walkers have enjoyed the improvement!







Paul Ryder's Club House  
Dedication  
Simulator  
Pro Shop Services



# Questions ?

