

City of Cambridge

Commission for Persons with Disabilities

51 Inman Street · Cambridge, MA · 02139-1732

617-349-4692 voice · Relay via 711 · 617-349-4766 fax



Keisha Greaves

Chair

Danielle Jones-McLaughlin

Secretary

Loring Brinckerhoff

Avril dePagter

Rayna Jhaveri

Melissa Miguel

Deepti Nijhawan

Emma Pan

Zach Solomons

Daniel Stubbs

Rachel Tanenhaus

Executive Director/

ADA Coordinator

Kate Thurman

Deputy Director/

Assistant ADA Coordinator

The Cambridge Commission for Persons with Disabilities is holding an abbreviated meeting online via Zoom on February 13, 2025 from 5:30 – 7:00 PM

PLEASE MAKE EVERY EFFORT TO JOIN BY 5:30 PM

AGENDA

Please keep your microphone muted when you are not speaking

- | | | |
|---|---------|---|
| 1. Introductions | 1 min. | |
| 2. Announcements | 2 min. | CCPD staff / Board |
| 3. Approval of January Minutes
<i>See page 4 of this agenda packet</i> | 2 min. | CCPD Board |
| 4. Presentation on City-Wide Pedestrian
Network Inventory and Assessment
<i>See page 7 of this agenda packet for presentation</i> | 45 min. | Jim Wilcox,
Department of Public Works (DPW) |
| 5. Chair's Report
<i>Reports from Working Groups</i> | 10 min. | Keisha Greaves |
| 6. Public Works Update | 5 min. | Melissa Miguel |
| 7. Staff Report | 5 min. | Rachel Tanenhaus |
| 8. Public Input
<i>See pages 2&3 of this agenda packet for instructions on providing public comment</i> | 3 min. | general public |

CART/closed captioning will be provided for this meeting

Captions can be turned on within the Zoom platform or streamed in a separate URL at <https://www.streamtext.net/player?event=CCPDMEETING>.

(captions will not appear until the meeting has started)

The City of Cambridge Commission for Persons with Disabilities, does not discriminate, including on the basis of disability. The Commission for Persons with Disabilities will provide auxiliary aids and services, written materials in alternative formats, and reasonable modifications in policies and procedures to persons with disabilities upon request.

**The next CCPD meeting will be held on
Thursday, March 13, 2025 from 5:30-7:00 PM**

Members of the public: See instructions on pages 2 & 3 on how to watch the CCPD meeting and provide public comment via Zoom

Approved 4/10/2025

Cambridge Commission for Persons with Disabilities (CCPD)

Minutes for Thursday, February 13, 2025 CCPD Meeting

Online via Zoom

Meeting was called to order at 5:35 PM

Present:

Members: Keisha Greaves, Dan Stubbs, Melissa Miguel, Zach Solomons, Loring Brinckerhoff, Emma Pan, Deepti Nijhawan

Absent: Rayna Jhaveri, Avril dePagter, Danielle Jones McLaughlin

Staff: Rachel Tanenhaus, Jim Wilcox, John Boyle

Announcements:

- The Boston Tax Help Coalition is offering free tax help to people with disabilities earning less than \$70,000 per year, including those in Cambridge. Help is available by appointment only on Sundays from February 3-April 13 between 10-3 at the Charlesview Community Center, 123 Antwerp Street Extension, Brighton, MA 02135. Visit boston.com/disability-tax-help or contact Lynn Dann at (617) 918-5260 or lynn.dann@boston.gov to make an appointment.
- Today's meeting is the last for John Boyle as CCPD's Police Liaison. Deputy Superintendent Buckowe Yam will be taking over.

Approval of Minutes:

- The January CCPD meeting minutes were unanimously approved.

Presentation on City-Wide Pedestrian Network Inventory and Assessment:

Please see the Power Point presentation beginning on page 4 for details.

Many of the curb ramps at City crosswalks pre-date the current Public Rights of Way Accessibility Guidelines (PROWAG).

Loring asked what traffic-calming is. Jim replied that speed humps are an example. Neighboring communities have used them extensively. The Departments of Transportation (DOT) and Community Development (CDD) are looking at locations for them. Some will go in during the 2025 construction season. The City is applying for a grant to fund installing speed humps. If you'd like to request a speed hump in your neighborhood, contact DOT or CDD, or let Jim know directly.

Emma asked how often these assessments happen. Jim answered that the previous one had taken place several years earlier. The methodology has changed; sidewalks and curb ramps were rated on a scale from 1-5, since PROWAG wasn't out yet. Conditions don't change much from year to year. The City is hoping to do a 5-year rotation from now on and update data regularly when construction happens. To report potholes or broken sections of sidewalk, call DPW at (617) 349-4800 or file a report using CommonwealthConnect/SeeClickFix.

Chair's Report:

CCPD Retreat Planning

Rachel reported that Ora Grodsky is excited to facilitate a CCPD Board member retreat once again. The retreat will take place on Saturday, May 31. Rachel and Kate will meet with Ora to do initial planning, after which Ora will meet with the Retreat Planning Working Group. Consequently, the Retreat Planning Working Group's scheduled meetings have been moved back so that Ora can meet with CCPD staff first.

Public Works Update:

On-going construction:

- Port Infrastructure Project- Harvard St.:
 - No winter month construction
 - Will resume next year
- River Street:
 - Utility work to continue along River St throughout the winter, as weather permits.
 - Carl Barron Plaza will see pedestrian detours ongoing for the next month. Contractor to pay special attention to accessibility features – we will monitor closely.
- Harvard Sq. Plaza – Phase 1 Sidewalk reconstruction ongoing. (No Roadwork during winter months)
 - Mobilize to Phase 7 week of Feb. 10th, weather pending.
 - Phase 7 duration - ~ 33 weeks
 - Phase 7 involves
 - Granite seating and wall,
 - Plaza re-grading
 - Brick paver replacement
 - Utility installations (water, sewer, drain) and electrical and telecommunication conduit work
 - Estimate Contract Completion Date – November 2026
- Chapter 90, Contract 24 –
 - Huron Avenue – Complete
 - Park Avenue - Complete
 - Chestnut Street
 - Brick sidewalk install continues through winter as weather allows
 - Top course paving complete – Pearl to Pleasant
 - Elm St
 - Some sidewalk work remains
 - Final paving Spring 2025
 - Webster Ave – Complete
 - Dodge Street
 - Final roadway in this contract
 - Contractor will mobilize spring 2025 with a winter 2025 completion date
- Chapter 90, Contract 25- Contract has been awarded to Newport Construction
 - Maple Ave utility installation is completed
 - Montgomery Street utility installation has commenced – ongoing
 - Dana Street utility installations anticipated late February
- Contract Streets
 - Green St- Pearl to Landsdowne
 - Maple Avenue- Broadway to Cambridge
 - Centre St – Dana to Hancock
 - Montgomery St – Harvey to Rindge
 - Sciarappa St- Charles to Winter

Upcoming projects:

- Linear Park
 - CDD is hosting a final Linear Park community open-house style meeting on Thursday, Feb 13, from 5:30 – 7:00pm at St. John the Evangelist Church, 2254 Mass Ave. Staff and consultants will be available to review the project (including draft construction documents) with the public.
- Port Infrastructure Project: Clement Morgan Park and Streets in Phase I contract will be bid this winter.
- Mass Ave4 improvements:

- Mass Ave Partial Construction Phase 1A
 - Project Area - Massachusetts Avenue Between Waterhouse Street and Forest St
 - Contract was awarded to Newport Construction
 - Awaiting construction schedule. Anticipated start March 2025
- Chapter 90, Contract 26- Second round of community meetings will start up late March 2025 and continue through May. Expected bid date: late summer 2025
- Contract Streets
 - Chetwyn Road – Newell St to End
 - Gray Street – Martin to Linnaean
 - Haskell – Rindge to Mass Ave
 - Norfolk – Broadway to Somerville City Line
 - Shepard – Garden to Mass Ave
 - Avon Hill Street – Linnaean St to Upland Rd
 - Hillside Ave – Avon Hill St to Washington Ave

If you are interested in receiving email notifications/updates for Chapter 90 - Contract 26, please email Melissa Miguel, P.E. at mmiguel@cambridgema.gov and you will be added to the contact list.

Reminder: Sidewalk ordinance for snow removal

12.16.110 - Sidewalks—Snow and ice removal.

Removal of Snow from Sidewalks. The owner or occupant of private property bordering on a street where there is a sidewalk or footway shall, within twelve hours after snow ceases to fall in the daytime and before one p.m. after a fall of snow during the night, cause all snow that may be on such sidewalk or footway to be removed therefrom. In the event of an unusually heavy snowfall, the time limit shall be extended at the discretion of the Commissioner of Public Works. The provisions of this section shall apply to snow which falls from buildings as well as to that which falls from the clouds.

Removal of Ice from Sidewalks. The owner or occupant of private property bordering on a street where there is a sidewalk or footway any portion of which is encumbered by ice shall within six hours after the sidewalk or footway becomes encumbered with ice cause such sidewalk or footway to be made safe and convenient by removing the ice therefrom, or by keeping the same covered with sand or some other suitable substance.

To report an icy or sidewalk that has not been shoveled, please use the SeeClickFix App or call DPW at **617-349-4800**.

Staff Report:

Rachel Tanenhaus reported

- Rachel provided technical assistance to the Sheraton Commander on a request for a variance from the Massachusetts Architectural Access Board (MAAB). She also received a request from the Fox Club for a letter of support regarding their amended variance request, but declined because she felt that the requested amendments did not meet the standards for granting an MAAB variance. Harvard University also contacted her for technical assistance regarding Greenleaf House.
- Rachel and Kate conducted a site visit to the Harvard-Epworth United Methodist Church. The church already has many accessible features, but its basement, which contains a day care among other spaces, is inaccessible. CCPD staff will continue a dialogue with the church to explore options for making the space more accessible.
- CCPD is thrilled to have hired a new part-time Administrative Assistant, who will be starting shortly!

Public Comment:

None.

Meeting adjourned at 6:45 PM.

Respectfully submitted,
Rachel Tanenhaus

Cambridge Commission for Persons with Disabilities

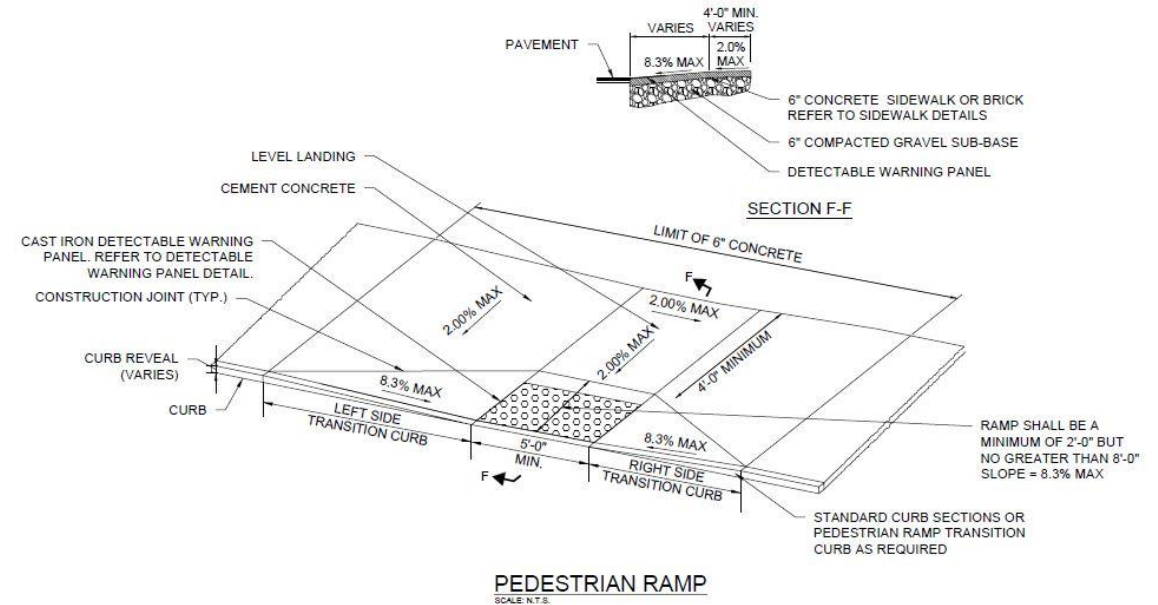
City-Wide Pedestrian Network Inventory and Assessment

CAMBRIDGE
DEPARTMENT
OF PUBLIC
**THE
WORKS**



Public Right of Way- Federal and State Accessibility Requirements

- Americans with Disabilities Act (ADA) of 1990
- Public Right-of-Way Accessibility Guidelines (PROWAG)
- Massachusetts Architectural Access Board Regulations (AAB) – 521 CMR

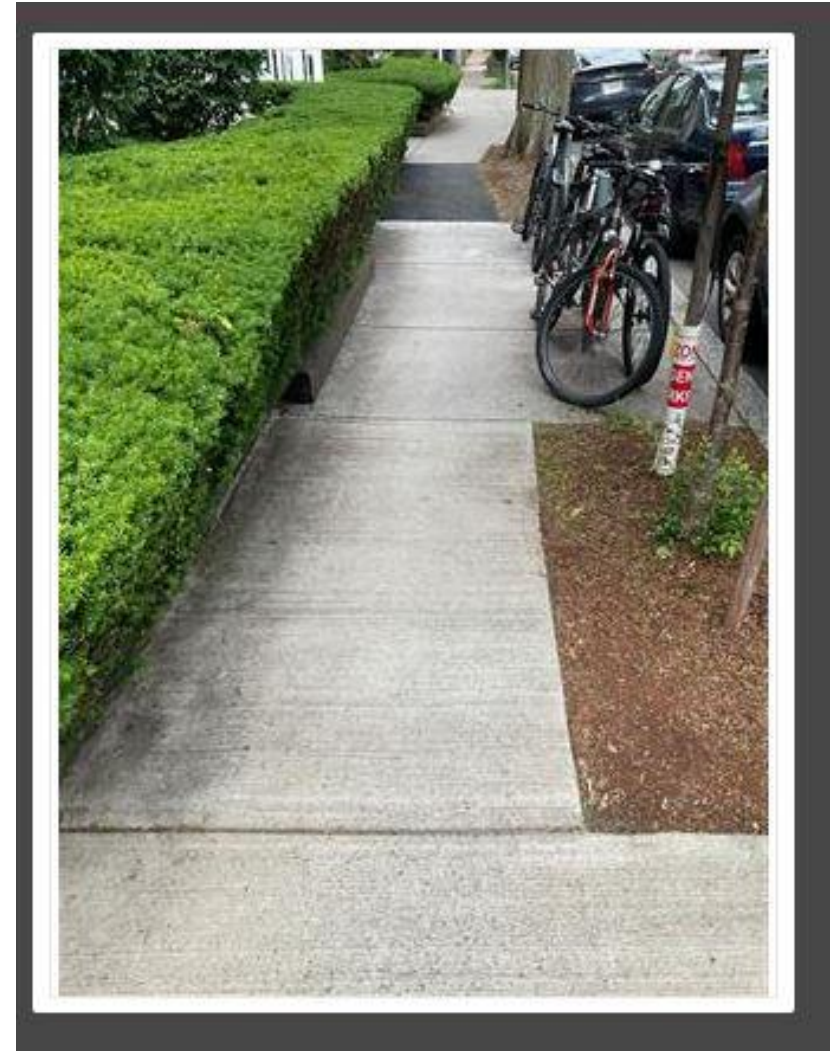


THE CAMBRIDGE
DEPARTMENT
OF PUBLIC
WORKS



Pedestrian Network Inventory and Assessment

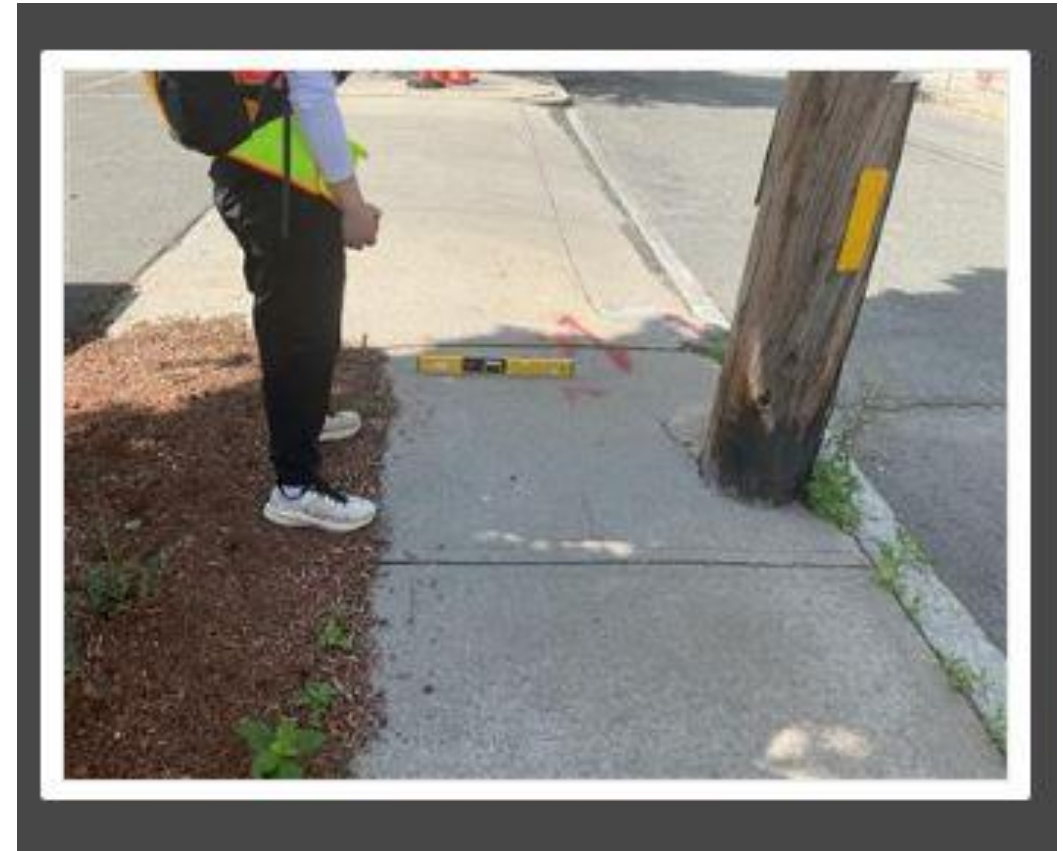
- City-wide inventory of City owned public right of ways
- All sidewalks, curb ramps and crosswalks
- Assessed condition based on PROWAG criteria
- Work completed during the Summer of 2024
- Did not include State right of ways and private ways



Pedestrian Network Inventory and Assessment

PROWAG Criteria for Sidewalks

- Continuous clear width = 48" (exclusive of curb)
- Passing Spaces required if clear width is less than 60"
- Grade (running slope)= 5.0% or not to exceed grade of street
- Cross Slope= 1:48 (2.1%) maximum
- Surface must be stable, firm and slip resistant
- Changes in Level= ¼ inch



CAMBRIDGE
DEPARTMENT
OF PUBLIC
**THE
WORKS**



Pedestrian Network Inventory Assessment

Condition Ratings for Sidewalks

Good condition

- No surface distresses other than minor blemishes
- Less than 10% of sidewalk segment needs to be replaced

Fair condition

- Surface distresses present, but minimal impedance
- 10% - 50% of sidewalk segment needs to be replaced

Poor condition

- Frequent surface distresses
- Many cracks, depressions, bumps, patches, tree roots
- 10% - 50% of sidewalk segment needs to be replaced



Pedestrian Network Inventory and Assessment

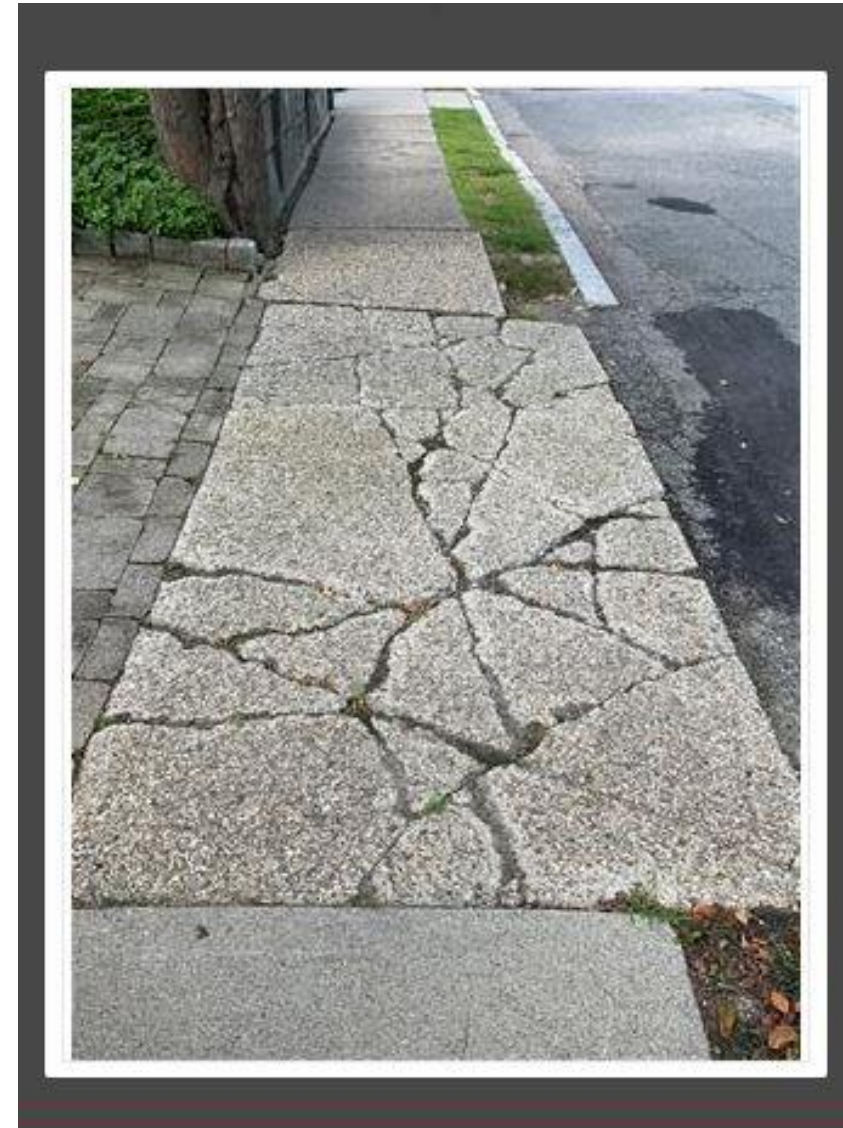
Sidewalk Results – 185 miles inspected

Materials

- 138.35 miles of concrete sidewalk
- 43.44 miles of brick sidewalk
- 3.25 miles of asphalt sidewalks

Condition

- 79.57 miles in good condition
- 91.49 miles in fair condition
- 13.98 miles in poor condition



Pedestrian Network Inventory and Assessment

Sidewalk Results – Observed Issues

Obstruction Issues= 6,004-point locations

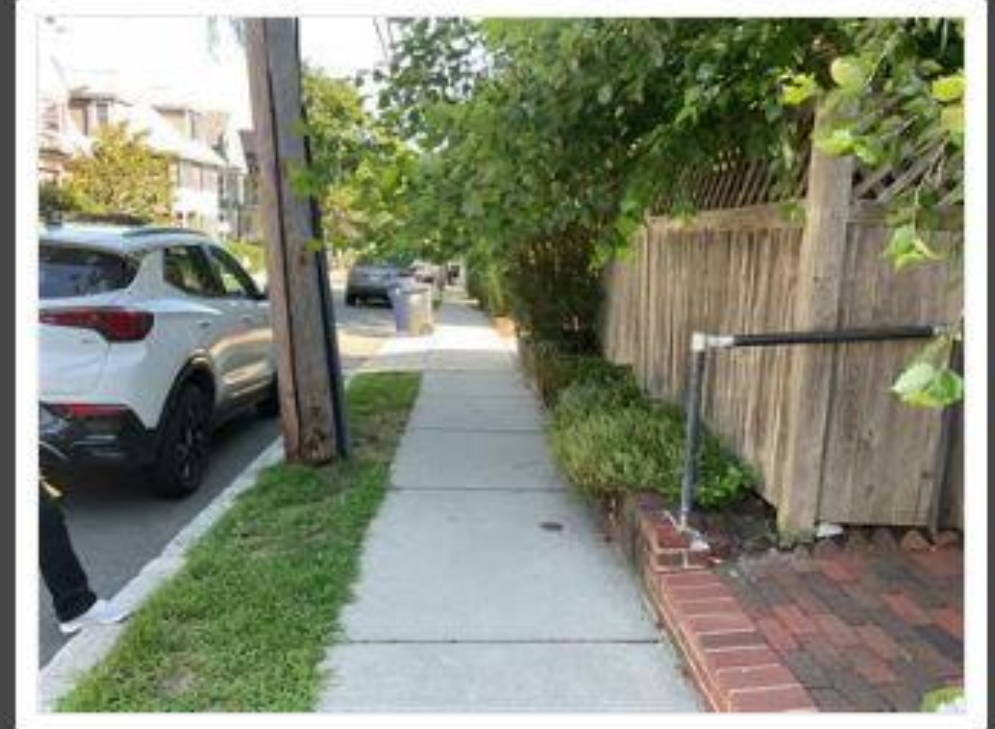
- Hydrants
- Utility poles
- Trees

Structural Issues = 4,038-point locations

- Depressions
- Lifting Panels
- Cracking

Maintenance Issues = 309-point locations

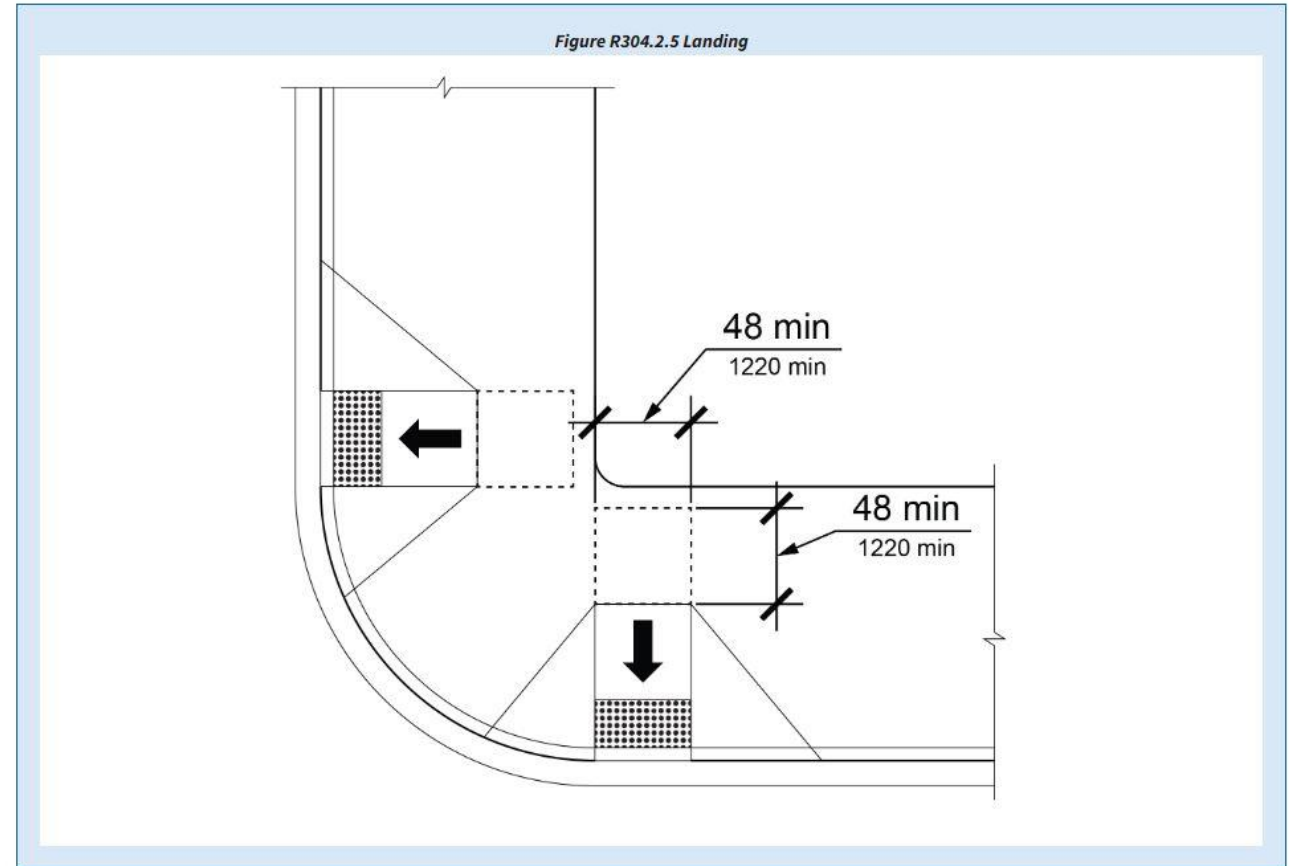
- Overhanging trees
- Overhanging shrubs
- Cracking



Pedestrian Network Inventory and Assessment

PROWAG Criteria for Curb Ramps

- Continuous clear width = 48"
- Grade (running slope)= 8.3% maximum
- Cross Slope= 1:48 (2.1%) maximum
- Landing= 48" x 48" minimum
- Surface must be stable, firm and slip resistant
- Must have a detectable warning surface



Pedestrian Network Inventory and Assessment

Curb Ramp Types



Perpendicular Ramp



Continuous Ramp



Parallel Ramp

THE WORKS
CAMBRIDGE
DEPARTMENT
OF PUBLIC



Pedestrian Network Inventory and Assessment

Curb Ramp Results – 5,193 inspected

Materials

- 4,740 concrete ramps
- 263 brick ramps
- 118 asphalt ramps

Condition

- 2,305 in good condition
- 2,373 in fair condition
- 443 in poor condition

Compliance (PROWAG criteria)

- 1,114 compliant ramps
- 3,362 non-compliant ramps
- 645 retrofit ramps



CAMBRIDGE
DEPARTMENT
OF PUBLIC
**THE
WORKS**



Pedestrian Network Inventory and Assessment

PROWAG Criteria for Crosswalks

- Continuous clear width = 60"
- Grade (running slope)= 5.0% maximum
- Cross Slope= 5.0 %maximum
- Surface must be stable, firm and slip resistant
- Must have pavement markings



THE
WORKS
CAMBRIDGE
DEPARTMENT
OF PUBLIC



Pedestrian Network Inventory and Assessment

Crosswalk Results – 5,193 inspected

Materials

- 2,368 asphalt crosswalks
- 62 brick crosswalks

Condition

- 1,090 in good condition
- 1,087 in fair condition
- 253 in poor condition

Compliance (PROWAG criteria)

- 1,886 compliant crosswalks
- 544 non-compliant crosswalks



**THE
WORKS**
CAMBRIDGE
DEPARTMENT
OF PUBLIC





City of Cambridge
Department of Public Works

Five Year Sidewalk and Street Reconstruction Plan



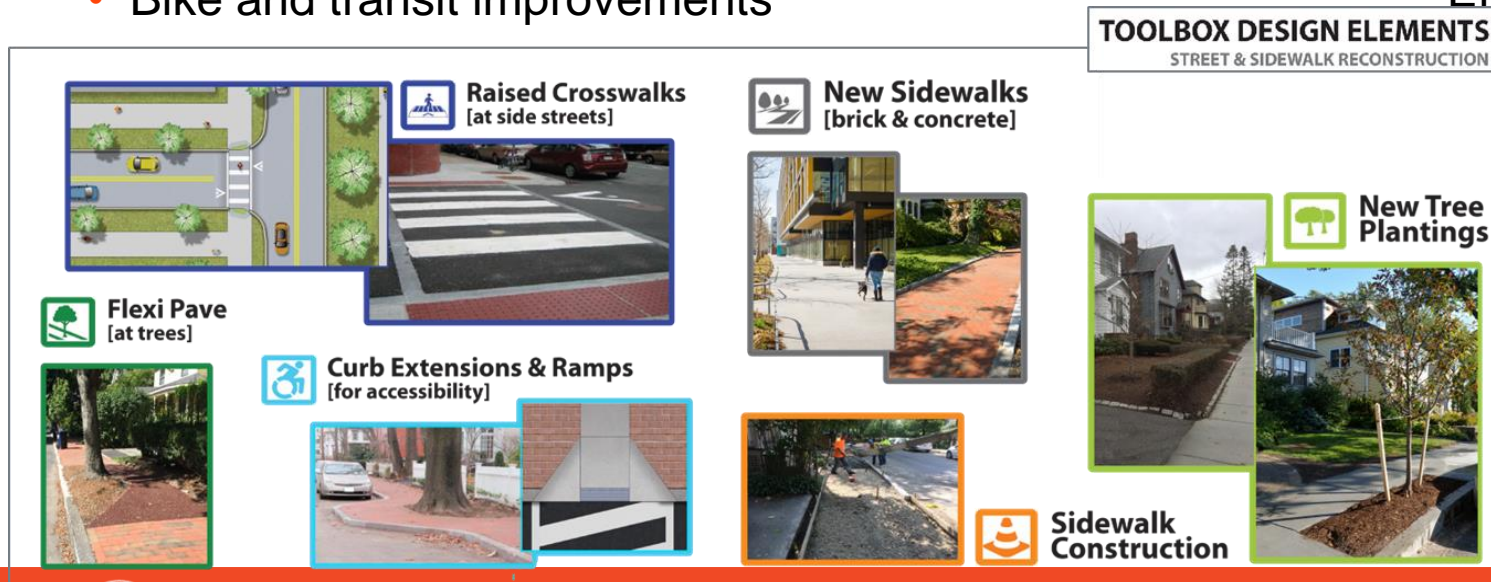
Programs: Street & Sidewalk

Street and sidewalk construction projects generally include:

- Paving
- Sidewalk and pedestrian ramps
- Traffic calming
- Street trees
- Stormwater management and green infrastructure
- Bike and transit improvements

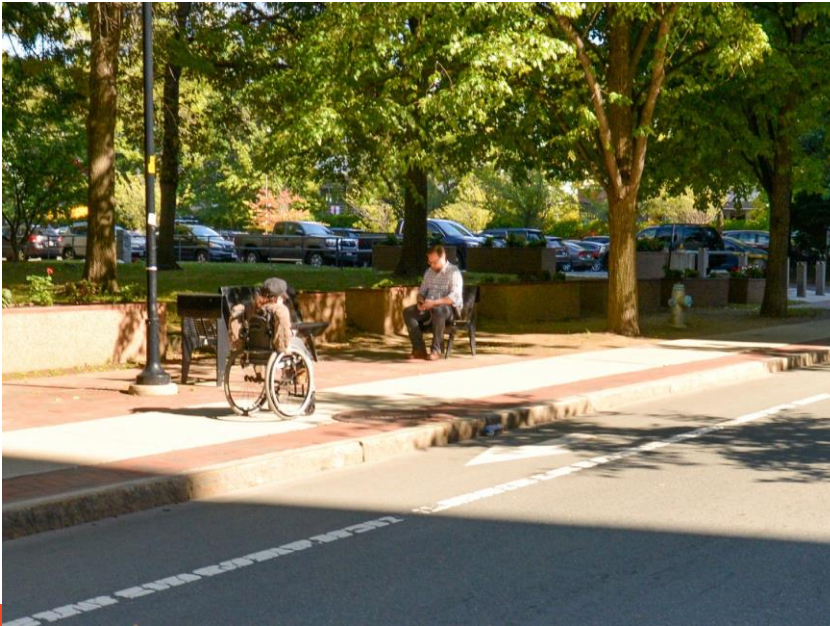
The City actively maintains and ensures safe, accessible City-owned street and sidewalks by:

- Conducting pothole repairs
- Paving streets through Miscellaneous Patch Contract
- Removing sidewalk obstructions, such as botanical, bicycle, signs, etc.
- Enforcing snow and ice removal



PROGRAMS: ANNUAL SIDEWALK CONTRACTS

- Budget: \$1,500,000 per year
- Program is used to address discrete sections of sidewalk throughout the City.
- Repairs typically a block in length but can be as small as one panel.
- Priority given to sidewalks and curb cuts in High Priority Areas, and as identified by **Commission for Persons with Disabilities and the DPW**.
- The DPW makes smaller repairs throughout the year to maintain accessibility across the City.
- Portion of Miscellaneous Sidewalk Program funding reserved for **sidewalks and curb cuts** where access is of acute importance.
- If you know of a location that is a critical access issue and is not addressed in the Five-Year Plan, please contact the Commission.



Cambridge Commission for Persons with Disabilities

Rachel Tanenhaus, Executive Director
Kate Thurman, Disability Project Coordinator

51 Inman Street, Second Floor
Cambridge, MA 02139

ccpd@cambridgema.gov

Voice: 617-349-4692 / TTY: 617-492-0235

Fax: 617-349-4766

www.cambridgema.gov/disabilities



Redesign Streets and Sidewalks

Large capital project in **the Port** that will include reconstructing many streets and sidewalks. Many of which are very narrow and make it challenging to plant trees and provide accessible sidewalks. Through the community design process, **shared streets** are being considered.



**THE
WORKS**
CAMBRIDGE
DEPARTMENT
OF PUBLIC



Questions

James Wilcox, City Engineer
jwilcox@cambridgema.gov
617-349-6426

