

LEARN ABOUT YOUR COMMUNITY'S UPDATED FLOOD MAPS

Do you have questions about your flood risk and insurance?

We've got answers!

Join us for a virtual **Open House** where you can speak directly with local, state, and FEMA experts.

Whether you live or work in **Essex, Middlesex, Norfolk, or Worcester Counties**, this is your chance to gain vital information about flood risks and insurance options.

Wednesday, June 4
any time between **4-7pm**

Register through Zoom!

Important note for coastal residents:

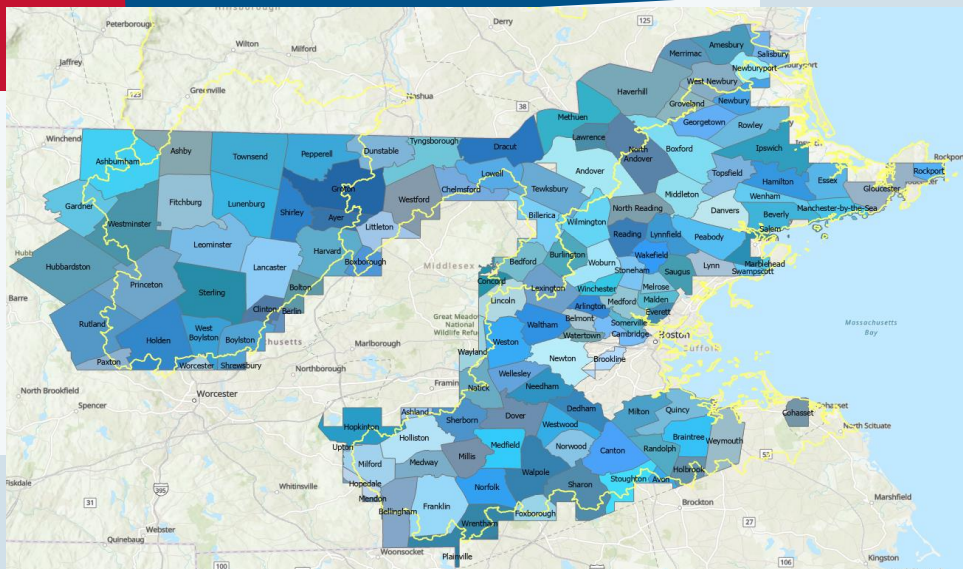
Please be aware that there have been no recent updates to the coastal panels.

We are dedicated to making our events accessible to your community. If you require accommodations (e.g., sign language, accessible parking, etc.), please contact Colleen Bailey (colleen.bailey@fema.dhs.gov) at least 5 business days before the event.



Is your city/ town on this list?

Amesbury, Andover, Arlington, Ashburnham, Ashby, Ashland, Avon, Ayer, Bedford, Bellingham, Belmont, Berlin, Beverly, Billerica, Bolton, Boxborough, Boxford, Boylston, Braintree, Brookline, Burlington, Cambridge, Canton, Chelmsford, Clinton, Cohasset, Concord, Danvers, Dedham, Dover, Dracut, Dunstable, Essex, Everett, Fitchburg, Foxborough, Franklin, Gardner, Georgetown, Gloucester, Groton, Groveland, Hamilton, Harvard, Haverhill, Holbrook, Holliston, Holden, Hopedale, Hopkinton, Hubbardston, Ipswich, Lancaster, Lawrence, Leominster, Lexington, Lincoln, Littleton, Lowell, Lunenburg, Lynn, Lynnfield, Malden, Manchester-by-the-Sea, Marblehead, Medfield, Medford, Medway, Melrose, Mendon, Merrimac, Methuen, Middleton, Milford, Millis, Milton, Natick, Needham, Newbury, Newburyport, Newton, Norfolk, North Andover, North Reading, Norwood, Paxton, Peabody, Pepperell, Princeton, Quincy, Randolph, Reading, Rockport, Rowley, Rutland, Salem, Salisbury, Saugus, Sharon, Sherborn, Shirley, Shrewsbury, Somerville, Sterling, Stoneham, Stoughton, Swampscott, Tewksbury, Topsfield, Townsend, Tyngsborough, Upton, Wakefield, Walpole, Waltham, Watertown, Wayland, Wellesley, Wenham, West Boylston, West Newbury, Westford, Westminster, Weston, Westwood, Weymouth, Wilmington, Winchester, Woburn, Worcester, Wrentham



FEMA