

City of Cambridge Committee on Public Planting

Meeting Minutes – November 13th, 2024 - 5:30-7pm

Hybrid Meeting via Zoom & at DPW - 147 Hampshire St.

Attendance (* indicates virtual attendance)

CPP Members: Ahron Lerman, Cindy Carpenter, Chantal Eide, Cynthia Smith, Gretchen Friesinger, Maggie Booz, Ray Fahrner, Ruth Loetterle*, Sandra Fairbank, Sophia Emperador, Tracy Orr* [*Members not in attendance:* Angela Zhong, Archana Venkataraman, Robb Johnson, Sara Cohen]

DPW/City of Cambridge: Ellen Coppinger*, Kevin Beuttell, David Lefcourt, Andrew Putnam, Cortney Kirk (CDD), Jerry Freedman - Supervising Engineer DPW,

Guests & members of the public: Liana Greenberg-Nielson (Green Cambridge); Shane Lougee (Stantec) Leah Grossman (Stantec), Kate Kennen (Offshoots, Inc), James Williamson

Meeting notes submitted by: Chantal Eide, Sandra Fairbank, Sophia Emperador

Agenda Items:

1. Review agenda
2. Meeting minutes review
3. Updates from City Arborist
4. Design reviews
 - Clement Morgan Park design review
 - Rafferty Park design review.
 - Linear Park design page turn meeting
5. Other business & announcements
6. Upcoming meetings
7. Public comments

1) Agenda was reviewed by Cindy

2) Review prior meeting minutes

Motion to approve meeting minutes by Ruth, seconded by Sandra.

3) Updates from City Arborists (David Lefcourt)

Update on fall plantings, numbers to date:

- DPW: 98 trees planted, 191 remain to be planted. Lahey: 66 trees have been planted, 222 remain to be planted
 - Cambridge received 420 trees for the bare root nursery at Fresh Pond Res.
 - There's a goal of planting 1250 trees per year.
 - Impact of fall drought on existing trees, and future tree species and care? ○
- Compost tea is being applied to trees to mitigate Fall drought, will continue another month.

Update on MOU with DCR for Cambridge to plant trees on DCR land - Process is moving forward - document language is under review & there's an upcoming mtg with DCR.

Update on UFF newsletter numbers, progress towards 700 EOY target:

- There's a surge in interest for Forest Friends. We are now at 918 subscribers.

Looking ahead to spring:

- Infrastructure improvements planned for the Port neighborhood (robust community involvement)

4) Design reviews

a. Clement Morgan Park design review - Shane Lougee & Leah Grossman from Stantec

- There will be an attempt to use native plantings and increase pollinator species
Some trees in poor health will be removed, mostly crabapples that are not offering much shade. Shade trees will be planted to replace those taken. Permeable play surface and asphalt will be used. Fencing will be removed to make it more inviting. The spray pad will be moved from the Tot Lot to the main park. Pine Street, which bisects the two parks, is slated to become a shared street. There will be terraced landscaping.
- Comments:
too much hardscape
ensure that there is enough protection of the ground covers, it is a heavily utilized park
consider expanding the tree wells near the basketball court

b. Rafferty Park design review - presentation by Kate Kennen - Offshoots, Inc:

- Rafferty Park is behind the Sancta Maria hospital and its main users are the nearby Fayerweather St. school and a daycare. It is connected ecologically to Fresh Pond.
- There is a steep slope down around the edges of the park with mostly Norway maples. No intervention here. A rabbit tolerant plant list will be used. Witch hazel and hophornbeam are among the materials being considered for the park.
- Comments:
Formalizing the forest play areas will take away the special informal character that makes them interesting to young kids
Consider Sassafras as another species to incorporate (multi-sensorial)
Concerns about the fence with the Sancta Maria parking lot

c. Linear Park - Page turn

- Announcement was made that the page turn would be held on Nov 2 at 5:30pm, at the DPW main conference room, no online option.

5) Other business & announcements

a. Update re: Urban Forestry and CPP work with CHA (Andrew)

- CHA has invited Andrew & Maggie to participate in a meeting on Nov. 19

b. MBTA work at Alewife site - summary by Ruth

- MBTA work being proposed - truck access through the IQHQ site and the MBTA land near Alewife - there will be impacts felt on the wetlands, impacts on Linear Park and the urban canopy due to the loss of additional trees. Additionally it is unclear how this project will handle the asbestos present on site. Something to keep an eye on.

6) Upcoming meetings

- DCR will hold a meeting in December about the section of Memorial Drive between JFK St and the Eliot Bridge.

7) Public comments

.....

Next meeting: Our next Zoom meeting will be held on December 11th, 2024, at 5:30pm and will be advertised to the public in advance.

NOTE: The foregoing represents our understanding of the discussions and decisions made during this meeting. The CPP requests permission to quote or reference these notes.

Attachments:

PDF materials emailed in advance of the November 13th mtg:

- 1. Clement Morgan Park Planting Plans Draft*
- 2. Clement Morgan Park Site Preparation Plan Draft*
- 3. 240910 Offshoots Rafferty Park Preferred Concept Plan*
- 4. 2401106 Offshoots Rafferty Park CPP Meeting Slide Deck*

PLANTING NOTES

1.

CONTRACTOR SHALL BEGIN MAINTENANCE IMMEDIATELY AFTER PLANTING AND WILL CONTINUE UNTIL FINAL WRITTEN ACCEPTANCE OF PLANT MATERIAL.
2.

CONTRACTOR SHALL VERIFY ALL TREE REMOVALS AND/OR TRANSPLANTS WITH OWNER'S REPRESENTATIVE PRIOR TO CONSTRUCTION START.
3.

CONTRACTOR SHALL MAINTAIN POSITIVE DRAINAGE AWAY FROM ALL BUILDING FOUNDATIONS, STRUCTURES, AND PLANTING BEDS.
4.

MAXIMUM SLOPE WITHIN DISTURBED AREAS SHALL NOT EXCEED 3:1, UNLESS OTHERWISE NOTED.
5.

THE LANDSCAPE CONTRACTOR SHALL SUPPLY ALL PLANT MATERIALS IN QUANTITIES SUFFICIENT TO COMPLETE ALL PLANTINGS SHOWN ON THIS DRAWING.
6.

ALL MATERIALS SHALL CONFORM TO THE GUIDELINES ESTABLISHED BY THE AMERICAN NURSERY AND LANDSCAPE ASSOCIATION.
7.

ALL PLANTS SHALL BEAR THE SAME RELATIONSHIP TO FINISH GRADE AS TO ORIGINAL GRADES BEFORE DIGGING.
8.

ALL PLANTS TO BE BALLED IN BURLAP OR CONTAINERIZED.
9.

MULCH FOR PLANTED AREAS TO BE AGED PINE BARK: PARTIALLY DECOMPOSED, DARK BROWN IN COLOR AND FREE OF WOOD CHIPS THICKER THAN 1/4 INCH.
10.

PLANTING SOIL MIX: LOAM THOROUGHLY INCORPORATED WITH ROTTED MANURE PROPORTIONED 5 C.Y. TO 1 C.Y. OR EQUIVALENT. FERTILIZER ADDED PER RECOMMENDED RATES OF SOILS ANALYSIS.
11.

THE LANDSCAPE CONTRACTOR SHALL GUARANTEE ALL PLANT MATERIALS FOR ONE (1) FULL YEAR FROM DATE OF ACCEPTANCE.
12.

ALL PLANT MATERIALS ARE SUBJECT TO THE APPROVAL OF THE LANDSCAPE ARCHITECT, AT THE NURSERY, AND AT THE SITE.
13.

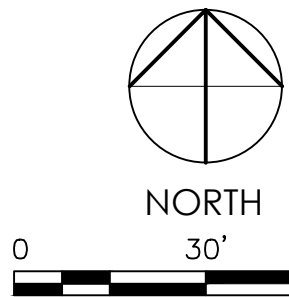
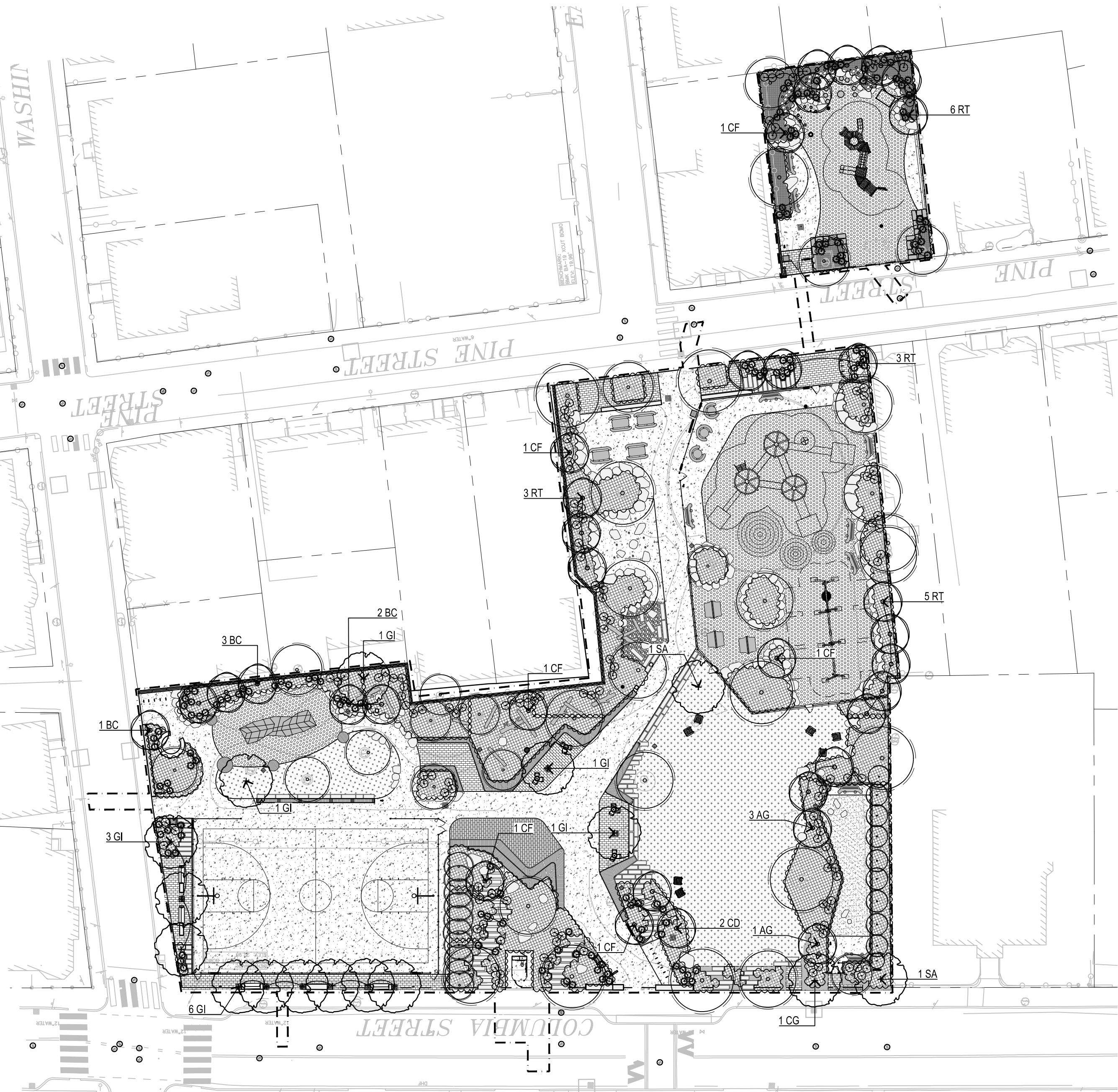
ALL AREAS OF THE SITE WHICH HAVE BEEN DISTURBED AND NOT OTHERWISE DEVELOPED SHALL BE LOAMED AND SEEDED WITH A MINIMUM DEPTH OF 6" DEPTH TOPSOIL.

LEGEND

- PROPERTY LINE
- LIMIT OF WORK LINE
- EXISTING TREE TO REMAIN
AND BE PROTECTED DURING
CONSTRUCTION
- DECIDUOUS TREE
- ORNAMENTAL TREE
- DECIDUOUS SHRUBS
- EVERGREEN
SHRUBS
- SODDED LAWN
- SHRUB / GROUNDCOVER
/ PERENNIAL PLANTING
- IRRIGATION LIMIT LINE
- PLANTBED / MULCH EDGE

PLANT_SCHEDULE

CODE	QTY	BOTANICAL NAME	COMMON NAME	SIZE	
TREES					
AG	4	AMELANCHIER X GRANDIFLORA	APPLE SERVICEBERRY	3-3.5" CAL.	
BC	6	BETULA NIGRA 'CULLY'	HERITAGE® RIVER BIRCH	3-3.5" CAL.	
CG	1	CARYA GLABRA	PIGNUT HICKORY	3-3.5" CAL.	
CD	2	CERCIS CANADENSIS	EASTERN REDBUD MULTI-TRUNK	3-3.5" CAL.	
CF	6	CORNUS FLORIDA	FLOWERING DOGWOOD	3-3.5" CAL.	
GI	13	GLEDITSIA TRIACANTHOS INERMIS 'SKYCOLE'	SKYLINE® HONEY LOCUST	3-3.5" CAL.	
RT	17	RHUS TYPHINA	STAGHORN SUMAC	3-3.5" CAL.	
SA	2	SASSAFRAS ALBIDUM	SASSAFRAS	3-3.5" CAL.	
SHRUBS					
CA	61	CLETHRA ALNIFOLIA 'SIXTEEN CANDLES'	SIXTEEN CANDLES SUMMERSWEET	#5 POT	
CN	11	COMPTONIA PEREGRINA	SWEET FERN	#5 POT	
FA	41	FOTHERGILLA GARDENII 'MT. AIRY'	MT. AIRY DWARF WITCHALDER	#5 POT	
HQ	15	HYDRANGEA QUERCIFOLIA	OAKLEAF HYDRANGEA	#5 POT	
IS	43	ILEX GLABRA 'SHAMROCK'	SHAMROCK INKBERRY HOLLY	#5 POT	
IG	96	ILEX GLABRA 'STRONGBOX'	INKBERRY HOLLY	#5 POT	
IW	7	ILEX VERTICILLATA	WINTERBERRY	#5 POT	
CODE	QTY	BOTANICAL NAME	COMMON NAME	SIZE	SPACING
GROUND COVERS					
AA	24	ACTAEA RACEMOSA	BLACK SNAKEROOT	#1 POT	24" o.c.
AO	154	AGASTACHE FOENICULUM	BLUE GIANT HYSSOP	#1 POT	24" o.c.
AU	85	ARCTOSTAPHYLOS UVA-URSI	KINNIKINICK	#1 POT	30" o.c.
AT	17	ASCLEPIAS TUBEROSA	BUTTERFLY MILKWEED	#1 POT	18" o.c.
AF	180	ATHYRIUM FILIX-FEMINA	COMMON LADY FERN	#1 POT	24" o.c.
CL	349	CAREX APPALACHICA	APPALACHIAN SEDGE	#1 POT	16" o.c.
CE	1,003	CAREX PENNSYLVANICA	PENNSYLVANIA SEDGE	#1 POT	12" o.c.
CT	467	CHASMANTHIUM LATIFOLIUM	NORTHERN SEA OATS	#1 POT	24" o.c.
DW	35	DESCHAMPSIA FLEXUOSA	CRINKLED HAIR GRASS	#1 POT	24" o.c.
DI	251	DRYOPTERIS INTERMEDIA	INTERMEDIATE WOOD FERN	#1 POT	24" o.c.
EP	17	ECHINACEA PURPUREA	CONEFLOWER	#1 POT	18" o.c.
ES	220	ERAGROSTIS SPECTABILIS	PURPLE LOVEGRASS	#1 POT	20" o.c.
ED	187	EURYBIA DIVARICATA	WHITE WOOD ASTER	#1 POT	24" o.c.
EL	56	EUTROCHIUM DUBIUM 'LITTLE JOE'	LITTLE JOE PYE WEED	#1 POT	24" o.c.
HS	144	HEUCHERA SANGUINEA	CORAL BELLS	#1 POT	18" o.c.
HV	144	HEUCHERA VILLOSA 'AUTUMN BRIDE'	AUTUMN BRIDE HAIRY ALUMROOT	#1 POT	18" o.c.
MM	49	MONARDA MEDIA	PURPLE BERGAMOT	#1 POT	18" o.c.
MP	49	MONARDA PUNCTATA	SPOTTED HORSEMINT	#1 POT	18" o.c.
PV	204	PANICUM VIRGATUM	SWITCH GRASS	#1 POT	24" o.c.
PQ	25	PARTHENOCISSUS QUINQUEFOLIA	VIRGINIA CREEPER	#1 POT	36" o.c.
PD	451	PHLOX DIVARICATA	WOODLAND PHLOX	#1 POT	24" o.c.
PC	260	POLYSTICHUM ACROSTICHOIDES	CHRISTMAS FERN	#1 POT	24" o.c.
PE	49	PYCNANTHEMUM TENUIFOLIUM	SLENDER MOUNTAIN MINT	#1 POT	18" o.c.
RF	26	RUDBECKIA FULGIDA	CONEFLOWER	#1 POT	18" o.c.
RH	70	RUDBECKIA HIRTA	BLACK-EYED SUSAN	#1 POT	18" o.c.
SL	101	SCHIZACHYRIUM SCOPARIUM	LITTLE BLUESTEM	#1 POT	24" o.c.
SJ	239	SEDUM X 'AUTUMN JOY'	AUTUMN JOY SEDUM	#1 POT	12" o.c.
SF	92	SOLIDAGO FLEXICAULIS	ZIGZAG GOLDENROD	#1 POT	18" o.c.
SH	283	SPOROBOLUS HETEROLEPIS	PRAIRIE DROPSEED	#1 POT	18" o.c.
SC	52	SYMPHYOTRICHUM CORDIFOLIUM	HEART-LEAVED ASTER	#1 POT	24" o.c.
WF	508	WALDSTEINIA FRAGARIOIDES	BARREN STRAWBERRY	#1 POT	18" o.c.



60% DESIGN
(NOT FOR
CONSTRUCTION)

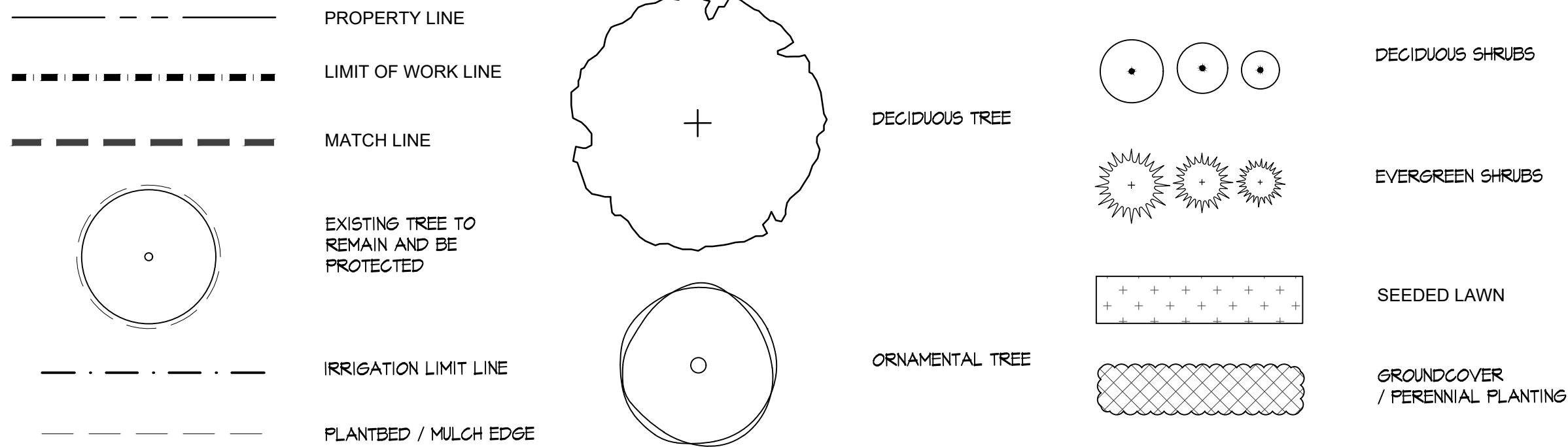


Scale			
Date	11/06/2024		
Job No.	20201034.009A		
Designed by	AF/ST		
Drawn by		DRAFT PLANTING PLAN	11/06/2024
Checked by	AF	No.	Description
Approved by			REVISIONS



Client	CITY OF CAMBRIDGE, MASSACHUSETTS	Sheet
Project	THE PORT INFRASTRUCTURE PHASE II PROJECT	File No.
Drawing	OVERALL PLANTING PLAN	L-300

LEGEND



Plot date: 11/06/2024 11:54:35 AM

LAYOUT: L-301 BY: lebeau scott

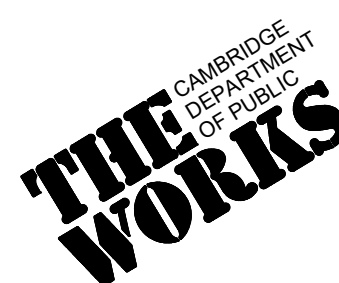
CAD FILE: C:\Users\lebeau\Documents\Stantec Consulting\186130200_Morgan_Tanks_Complete_Street\Project Files\01_WIP\06_Landscape\design\drawing\186130200_planting.dwg

1 ENLARGEMENT A

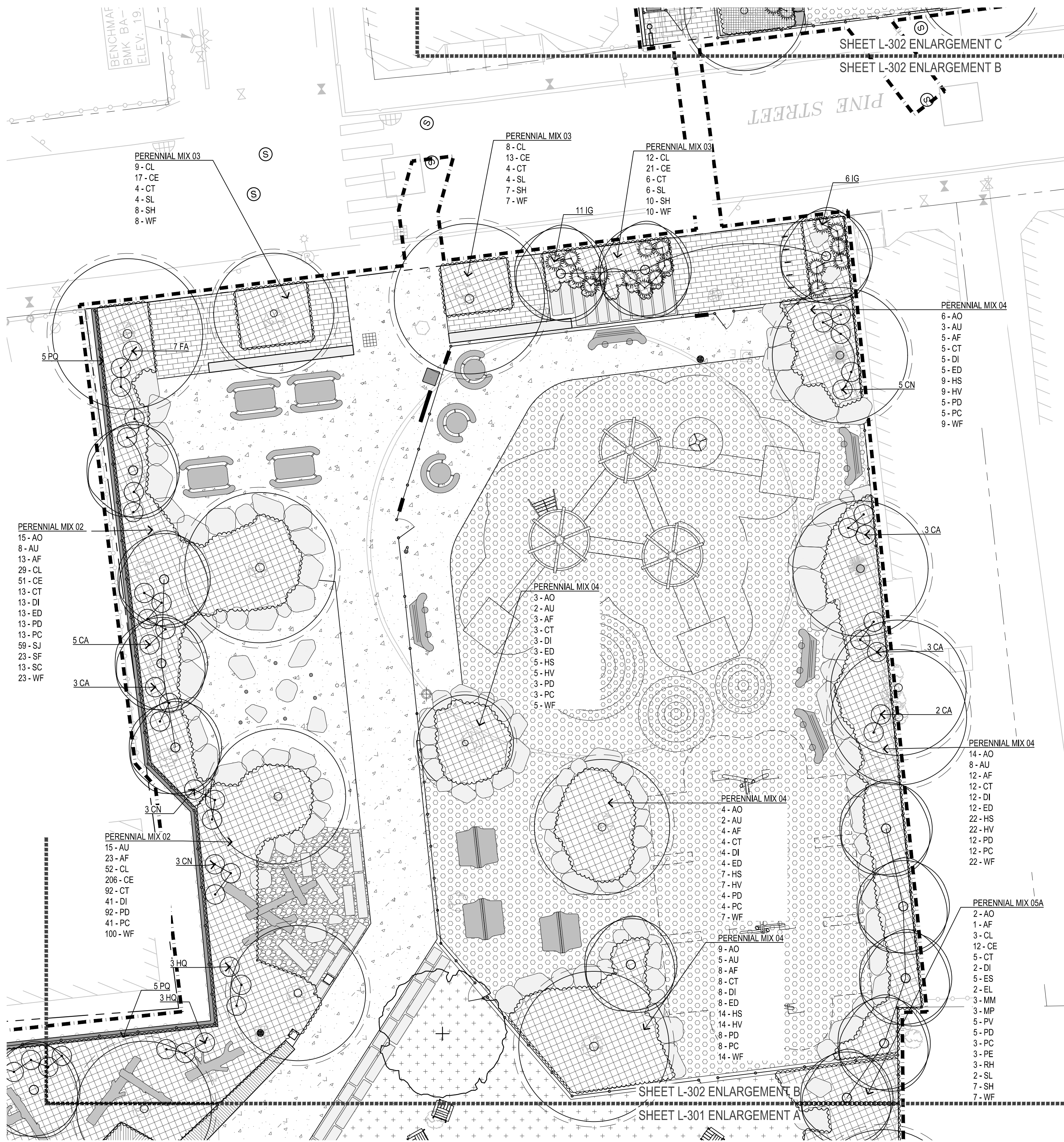
SCALE: 1" = 10'



Scale			
Date	11/06/2024		
Job No.	20201034.009A		
Designed by	AF/ST		
Drawn by		DRAFT PLANTING PLAN	11/06/2024
Checked by	AF	No.	Description
Approved by			REVISIONS



Client	CITY OF CAMBRIDGE, MASSACHUSETTS	Sheet	
Project	THE PORT INFRASTRUCTURE PHASE II PROJECT	File No.	L-301
Drawing	PLANTING ENLARGEMENT PLAN 1		



1 ENLARGEMENT B

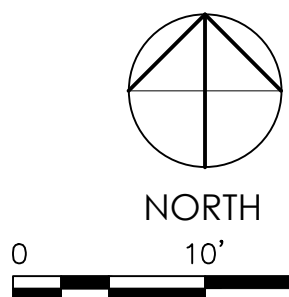
SCALE: 1" = 10'

2 ENLARGEMENT C

SCALE: 1" = 10'

LEGEND

	PROPERTY LINE		DECIDUOUS SHRUBS
	LIMIT OF WORK LINE		EVERGREEN SHRUBS
	MATCH LINE		SEEDED LAWN
	EXISTING TREE TO REMAIN AND BE PROTECTED		GROUND COVER / PERENNIAL PLANTING
	DECIDUOUS TREE		IRRIGATION LIMIT LINE
	ORNAMENTAL TREE		PLANTBED / MULCH EDGE



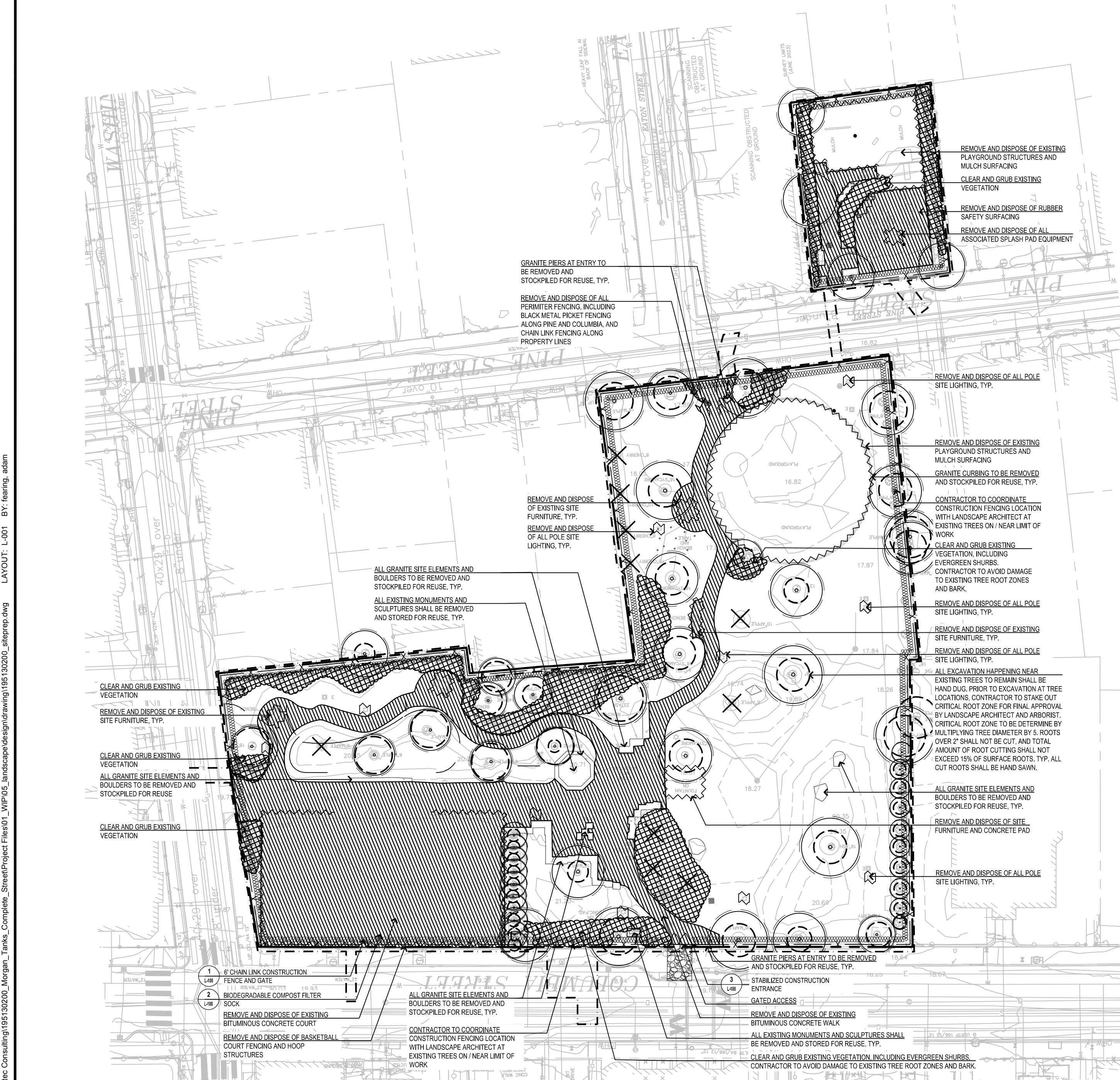
60% DESIGN
(NOT FOR
CONSTRUCTION)



Scale			
Date	11/06/2024		
Job No.	20201034.009A		
Designed by	AF/ST		
Drawn by		DRAFT PLANTING PLAN	11/06/2024
Checked by	AF	No.	Description
Approved by			REVISIONS



Client	CITY OF CAMBRIDGE, MASSACHUSETTS	Sheet	
Project	THE PORT INFRASTRUCTURE PHASE II PROJECT	File No.	L-302
Drawing	PLANTING ENLARGEMENT PLAN 2		

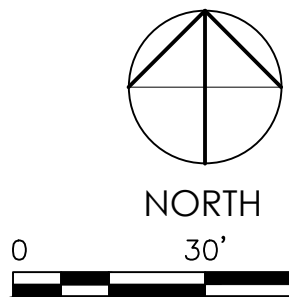


LEGEND

	PROPERTY LINE
	LIMIT OF WORK LINE
	8'-HIGH CONSTRUCTION FENCE
	SEDIMENT CONTROL BARRIER
	CONSTRUCTION ENTRANCE
	EXISTING TREE TO BE PROTECTED DURING CONSTRUCTION
	EXISTING TREE TO BE REMOVED
	BITUMINOUS CONCRETE PAVEMENT REMOVAL
	EXISTING VEGETATION TO BE CLEARED AND GRUBBED
	EXISTING SITE FEATURE TO BE REMOVED

SITE PREPARATION NOTES

- EXISTING CONDITIONS INFORMATION IS REPRODUCED FROM THE SURVEY PREPARED BY WSP USA INC. OF MERRIMACK, NEW HAMPSHIRE AND IS DATED JULY 07, 2023.
- WITHIN THE LIMIT OF THE WORK LINE AS NOTED ON THE SITE PREPARATION PLANS, REMOVE AND DISCARD ALL CONCRETE PAVEMENT, BITUMINOUS CONCRETE PAVEMENT, BRICK PAVEMENT, TOP SOIL, MULCH, TRASH, DEAD TREES AND STUMPS, SHRUBBERY, CHAIN LINK FENCE POSTS, RAILS, FABRIC, GATES, FOOTINGS AND ALL APPURTENANCES, BOLLARDS, POSTS, CONCRETE FOOTINGS AND FOUNDATIONS, WALLS AND CURBS UNLESS OTHERWISE NOTED.
- THE OWNER'S REPRESENTATIVE SHALL BE CONSULTED AND WILL REVIEW THE WORK ON SITE WITH THE CONTRACTOR BEFORE ANY WORK SHALL COMMENCE.
- THE CONTRACTOR SHALL VERIFY ALL EXISTING CONDITIONS IN THE FIELD AND REPORT ANY DISCREPANCIES BETWEEN PLANS AND ACTUAL CONDITIONS TO THE OWNER'S REPRESENTATIVE PRIOR TO STARTING WORK.
- THE CONTRACTOR IS RESPONSIBLE FOR ANY DAMAGE TO EXISTING CONDITIONS TO REMAIN THAT ARE DUE TO CONTRACTOR OPERATIONS.
- ALL ITEMS TO BE REMOVED THAT ARE NOT STOCKPILED FOR LATER REUSE ON THE PROJECT OR DELIVERED TO THE OWNER SHALL BE LEGALLY DISPOSED OF OFF SITE BY THE CONTRACTOR.
- THE LOCATIONS OF UNDERGROUND UTILITIES SHOWN ON THIS PLAN ARE BASED ON THE SURVEY REFERENCED ABOVE. THE CONTRACTOR SHALL CONTACT DIGSAFE AND THE PROPER LOCAL AUTHORITIES OR RESPECTIVE UTILITY COMPANIES TO CONFIRM THE LOCATION OF ALL EXISTING UTILITIES BEFORE COMMENCING WORK. ANY DAMAGE DUE TO FAILURE OF THE CONTRACTOR TO CONTACT THE PROPER AUTHORITIES SHALL BE BORNE BY THE CONTRACTOR.
- THE CONTRACTOR SHALL BE RESPONSIBLE FOR COORDINATING HIS EFFORTS OF THE DEMOLITION WITH ALL TRADES.
- THE CONTRACTOR SHALL COORDINATE ALL ADJUSTMENT OR ABANDONMENT OF UTILITIES WITH THE RESPECTIVE UTILITY COMPANY.
- THE CONTRACTOR SHALL MAINTAIN OR ADJUST TO NEW FINISH GRADE AS NECESSARY ALL UTILITY AND SITE STRUCTURES SUCH AS LIGHT POLES, SIGN POLES, MAN HOLES, CATCH BASINS, HAND HOLES, WATER AND GAS GATES, HYDRANTS, ETC., FROM MAINTAINED UTILITY AND SITE SYSTEMS UNLESS OTHERWISE NOTED OR DIRECTED BY THE OWNER'S REPRESENTATIVE.
- ALL TREES THAT ARE TO BE REMOVED WILL BE REVIEWED WITH LANDSCAPE ARCHITECT PRIOR TO CUTTING. LANDSCAPE ARCHITECT SHALL IDENTIFY SECTIONS OF TREE TRUNKS AND BRANCHES THAT SHALL BE KEPT INTACT AND STOCKPILED FOR REUSE. STOCKPILED LOGS SHALL BE COVERED BY A WATERPROOF COVER FOR DURATION OF CONSTRUCTION.
- ANY AND ALL NATURAL STONE SITE ELEMENTS FOUND ON SITE, AND/OR REMOVED FOR CONSTRUCTION SHALL BE STOCKPILED AND REVIEWED WITH LANDSCAPE ARCHITECT FOR REUSE. ALL STONE ELEMENTS SHALL BE CLEANED OF GROUT AND DEBRIS AND ARRANGED TO BE MEASURED AND INVENTORIED BY LANDSCAPE ARCHITECT AND OWNER.



60% DESIGN
(NOT FOR
CONSTRUCTION)



Scale			
Date	11/06/2024		
Job No.	20201034.009A		
Designed by	AF, ST		
Drawn by	ST, SB		
Checked by	AF, SL	No.	Description
Approved by			REVISIONS



Client	CITY OF CAMBRIDGE, MASSACHUSETTS	Sheet
Project	THE PORT INFRASTRUCTURE PHASE II PROJECT	File No.
Drawing	SITE PREPARATION AND EROSION CONTROL PLAN	L-001

RAFFERTY PARK

RENOVATION PROJECT

RENOVATION PLAN ▪ SEPTEMBER 10, 2024

RENOVATION PLAN

We heard a strong preference for the general layout shown in “the Cube” scheme. People liked the sizing and location of the different parts of the park. People did appreciate the more organic and creative feeling of the Wave scheme. We think these are reflected in this combined scheme.

People liked using **natural materials in play equipment.** Kids were especially interested in climbing and other more exciting play.

We heard feedback about **improving the entry** to the park from Concord Ave. The City is working with the Sancta Maria on looking at access to the park.

The loop pathway will provide an accessible path around the park and connect to new seating around the park. We also heard interest in **planting areas** along the edges of the park to bring a softer character to the site.

As the Alewife Quadrangle area redevelops over time, **a future connection** will make it easier to connect with future neighbors. As part of our current design process, we are looking at where a future connection would most likely meet the site.

Although we will not be building it as a part of this renovation project, we will be making sure a new connection will work well with and connect seamlessly to our proposed design. We expect that this connection will be part of the consideration as the area undergoes redevelopment over time.

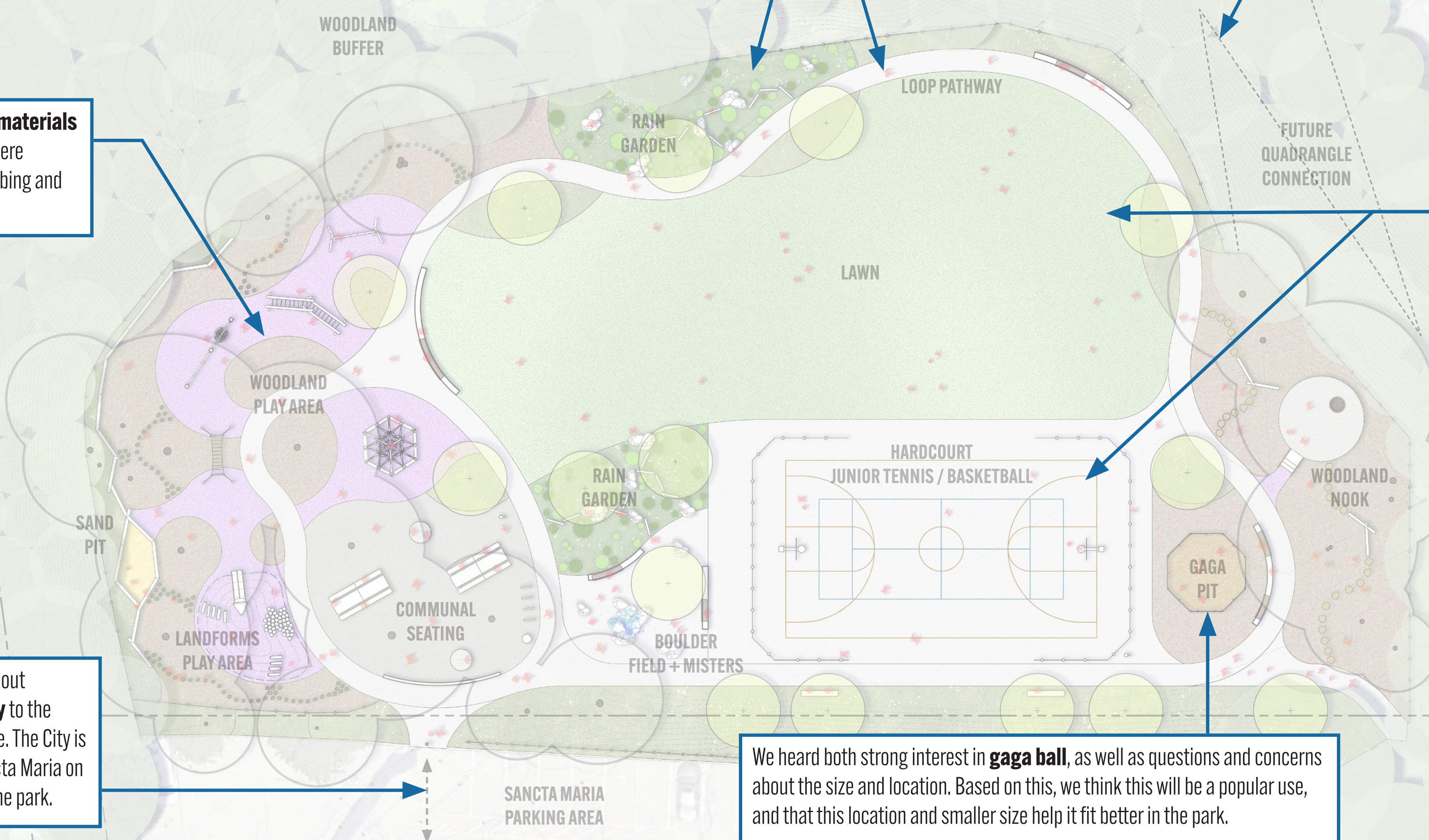
We heard different opinions and helpful questions about the field & court space.

We heard some interest in a more open court space, and some interest as well in retaining a tennis court. We also heard feedback about making sure there is still ample field space.

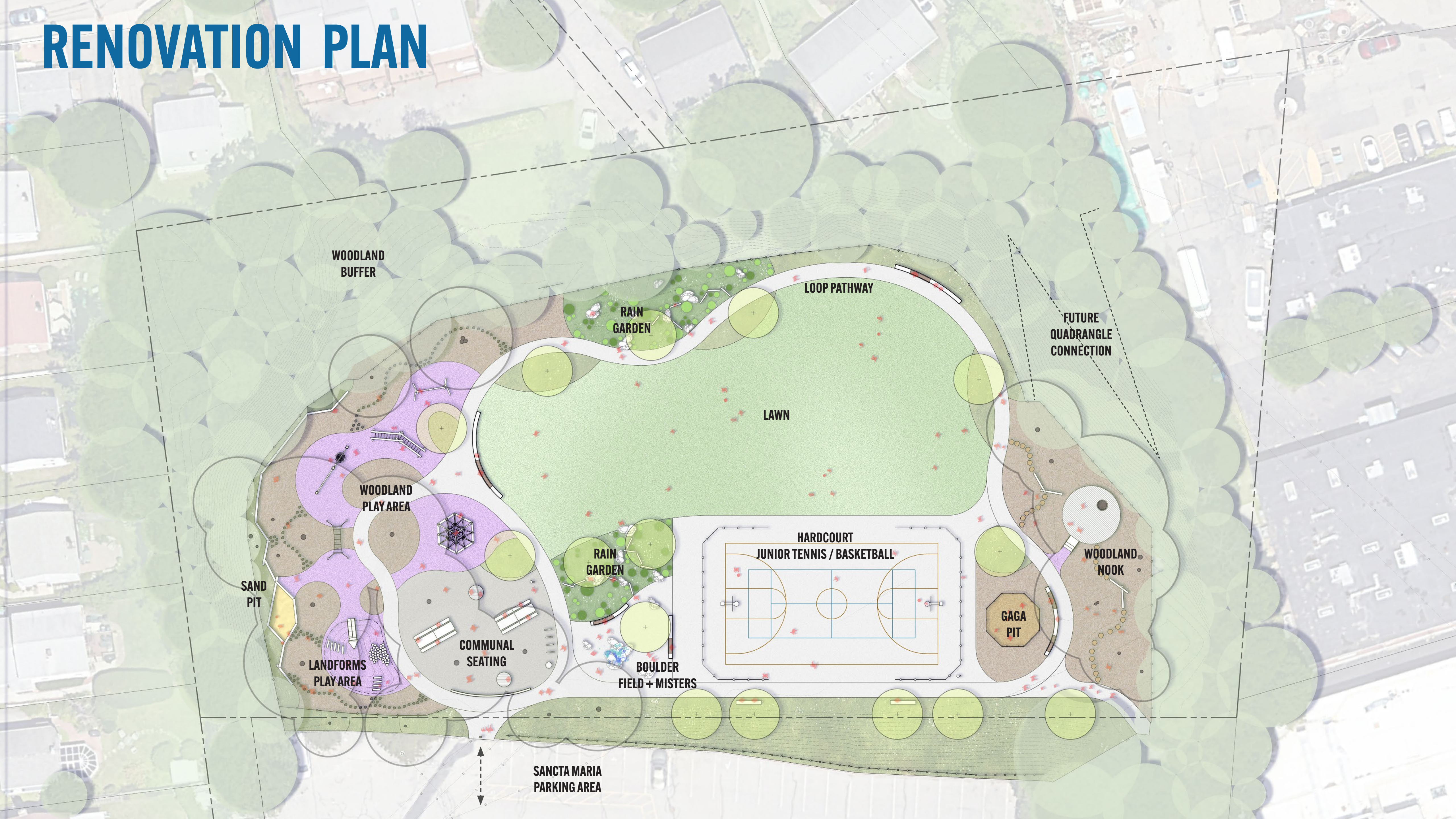
As we did more outreach around this, we heard that much of the tennis use is more likely to be informal and casual (as opposed to competition-level play).

We think a good balance for a neighborhood park like this is a flexible court space based on the sizing of a **junior-size tennis court**, which works well for casual play, while also retaining field space. We heard that the different multi-court tennis complexes in the area are more attractive destinations for players interested in competitive play.

We heard both strong interest in **gaga ball**, as well as questions and concerns about the size and location. Based on this, we think this will be a popular use, and that this location and smaller size help it fit better in the park.



RENOVATION PLAN







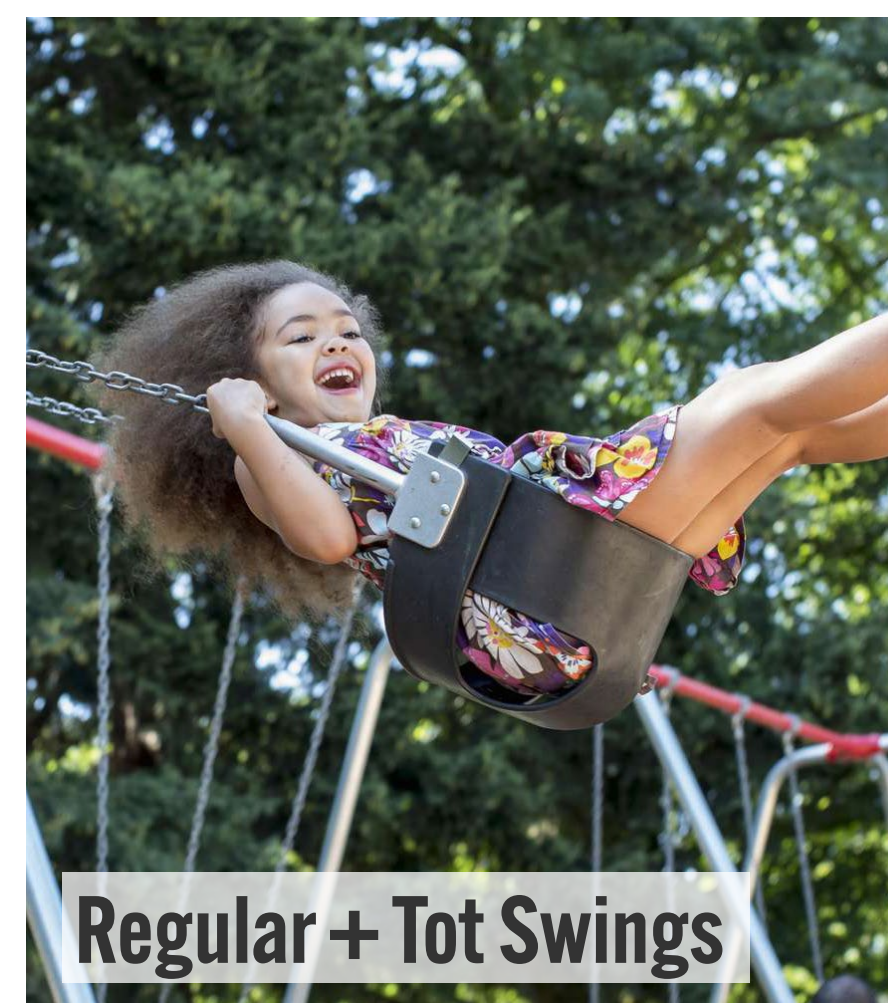
Landform Play Area



Sand Play



Woodland Play Area





Water Play



Boulder Field + Water Misters

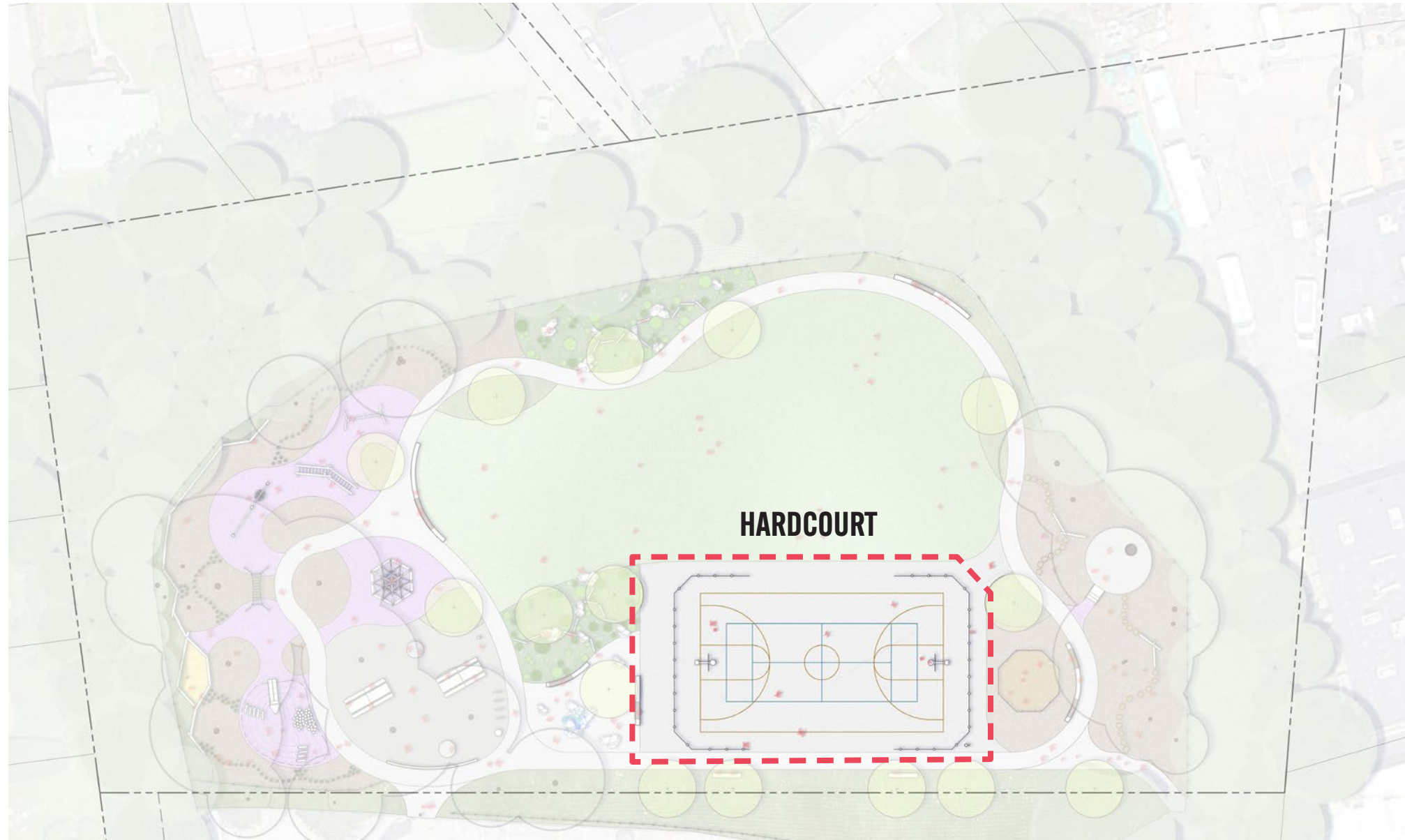


Rain Gardens

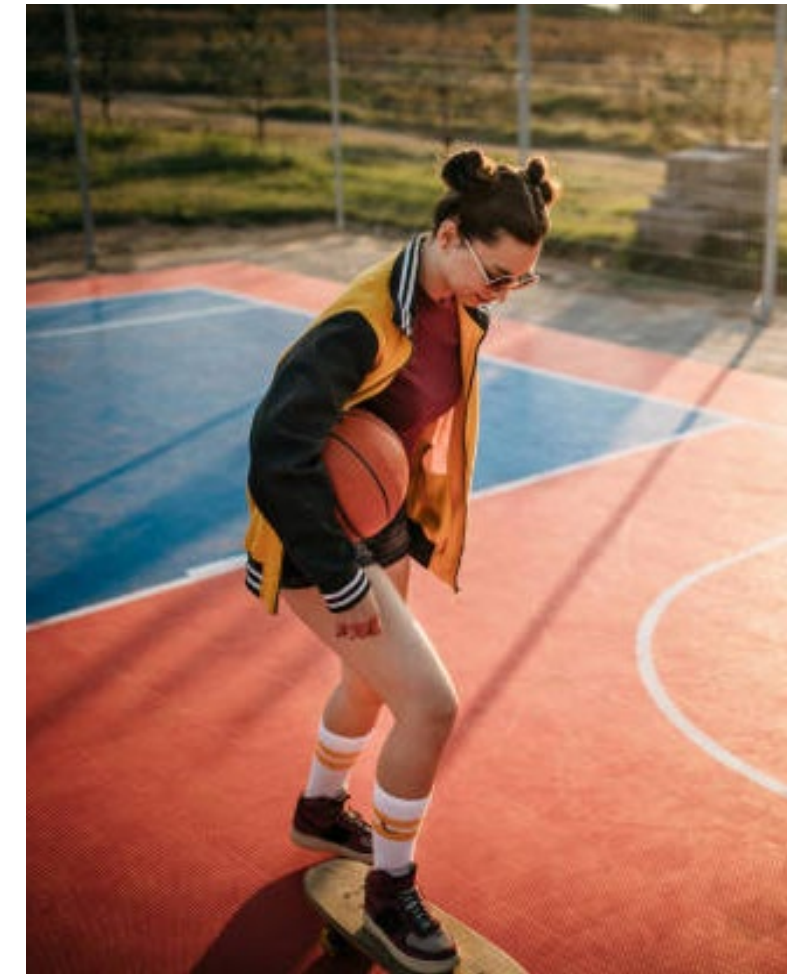


Interactive Path Through Garden





Hardcourt Activities



Hardcourt Sports





Gaga Pit



Woodland Nook



Kit of Parts / Free Play



Log Steppers / Free Play



Tree Deck

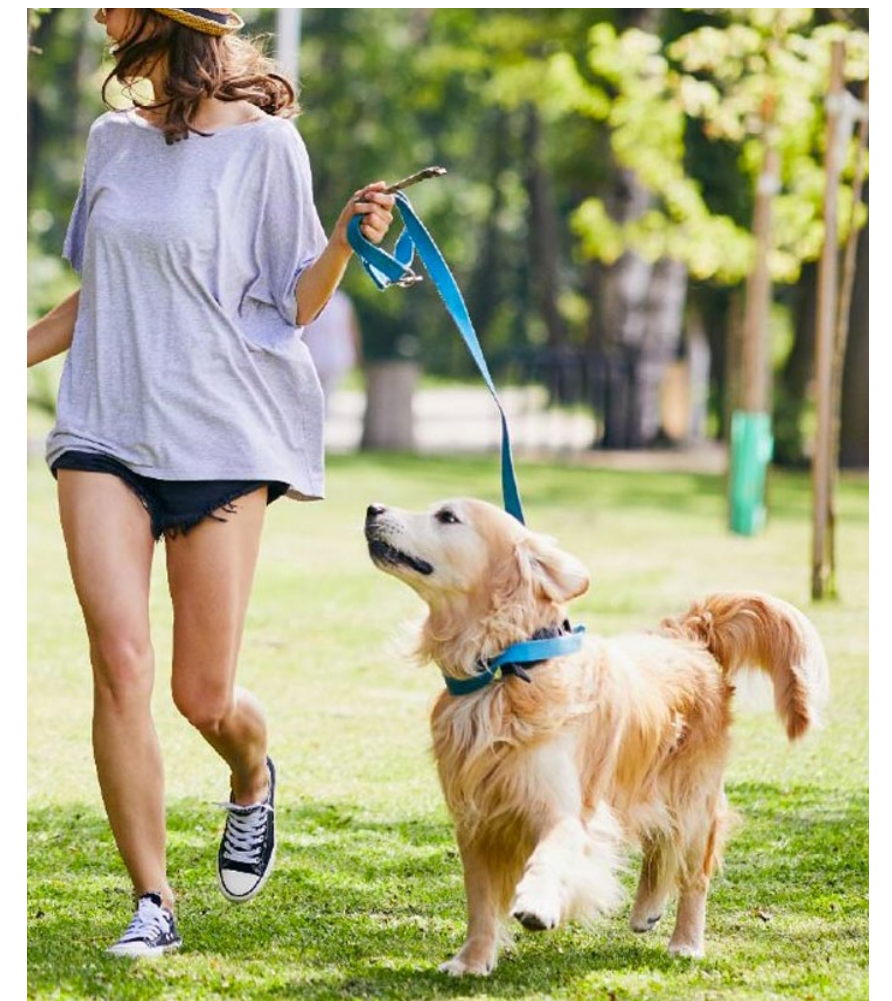




Field Sports



Field Activities





Communal Tables

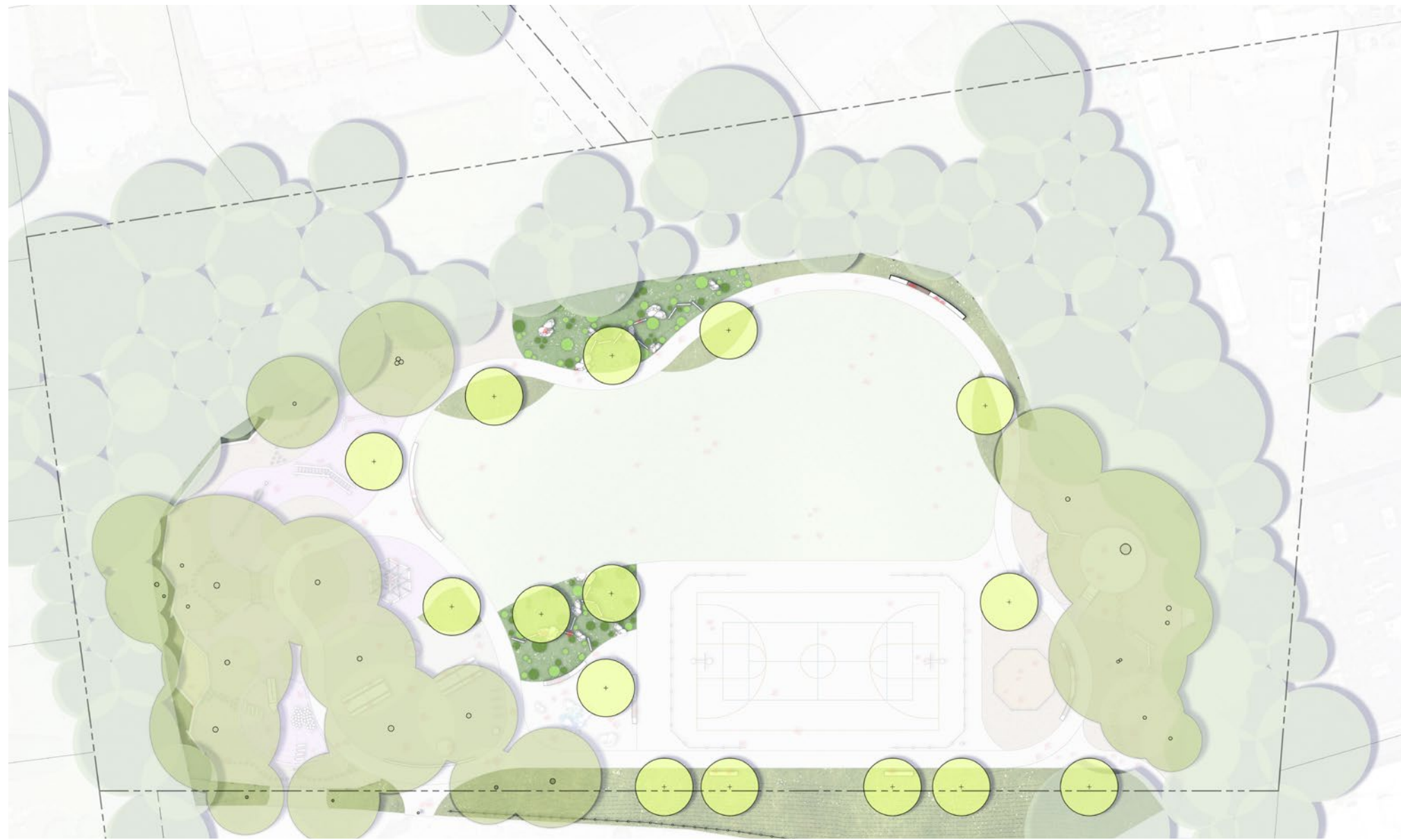


Seating / Lounging



Bike Racks





Active Nature



Exploration and Sensory Nature



Planting Character



RAFFERTY PARK

RENOVATION PROJECT



COMMITTEE ON PUBLIC PLANTING - NOVEMBER 13, 2024

PROJECT TEAM

CITY OF CAMBRIDGE



DESIGN TEAM - PRIME CONSULTANT



DESIGN SUB-CONSULTANTS



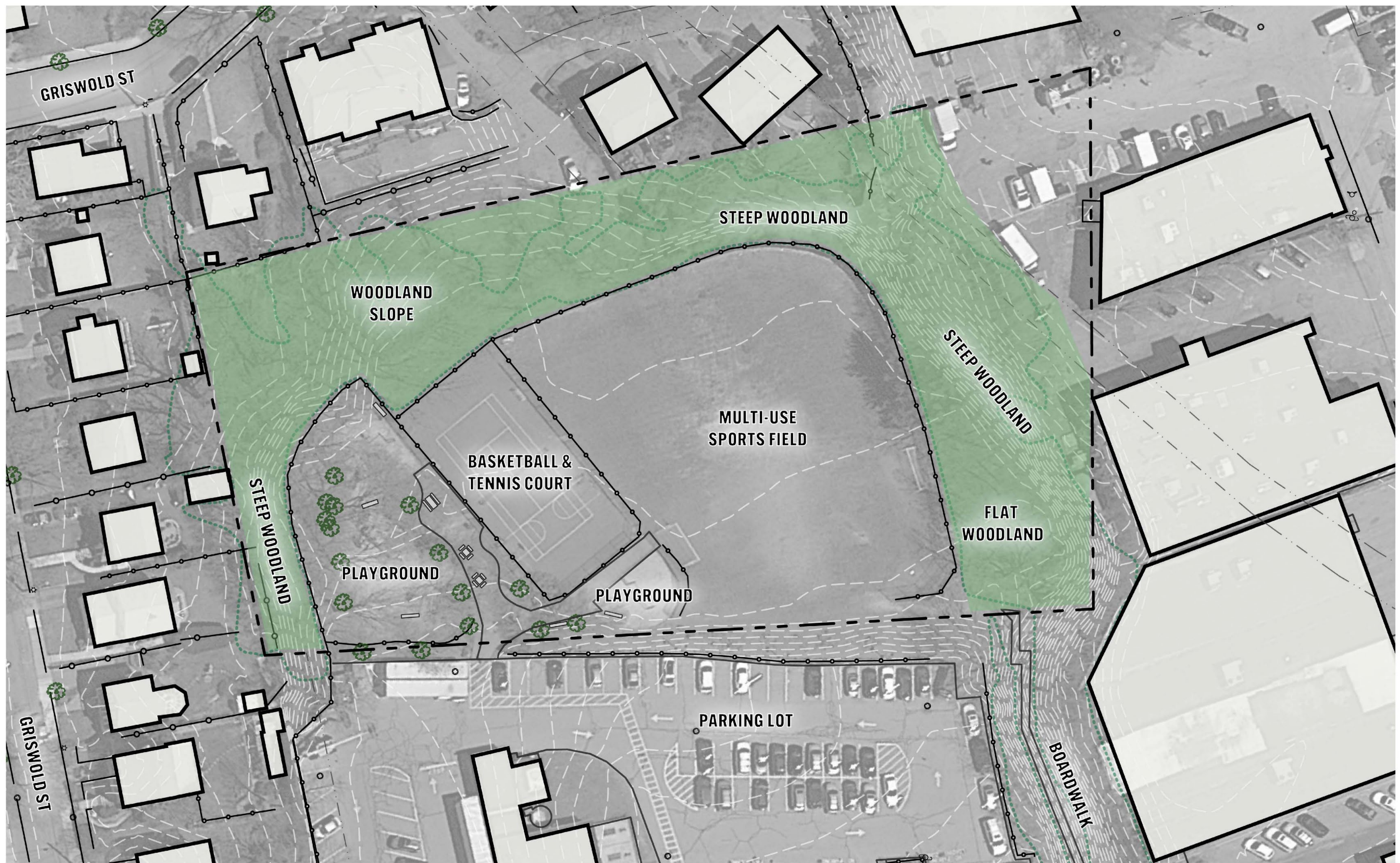
PROJECT LOCATION



LOCAL CONTEXT - ECOLOGY



EXISTING CONDITIONS

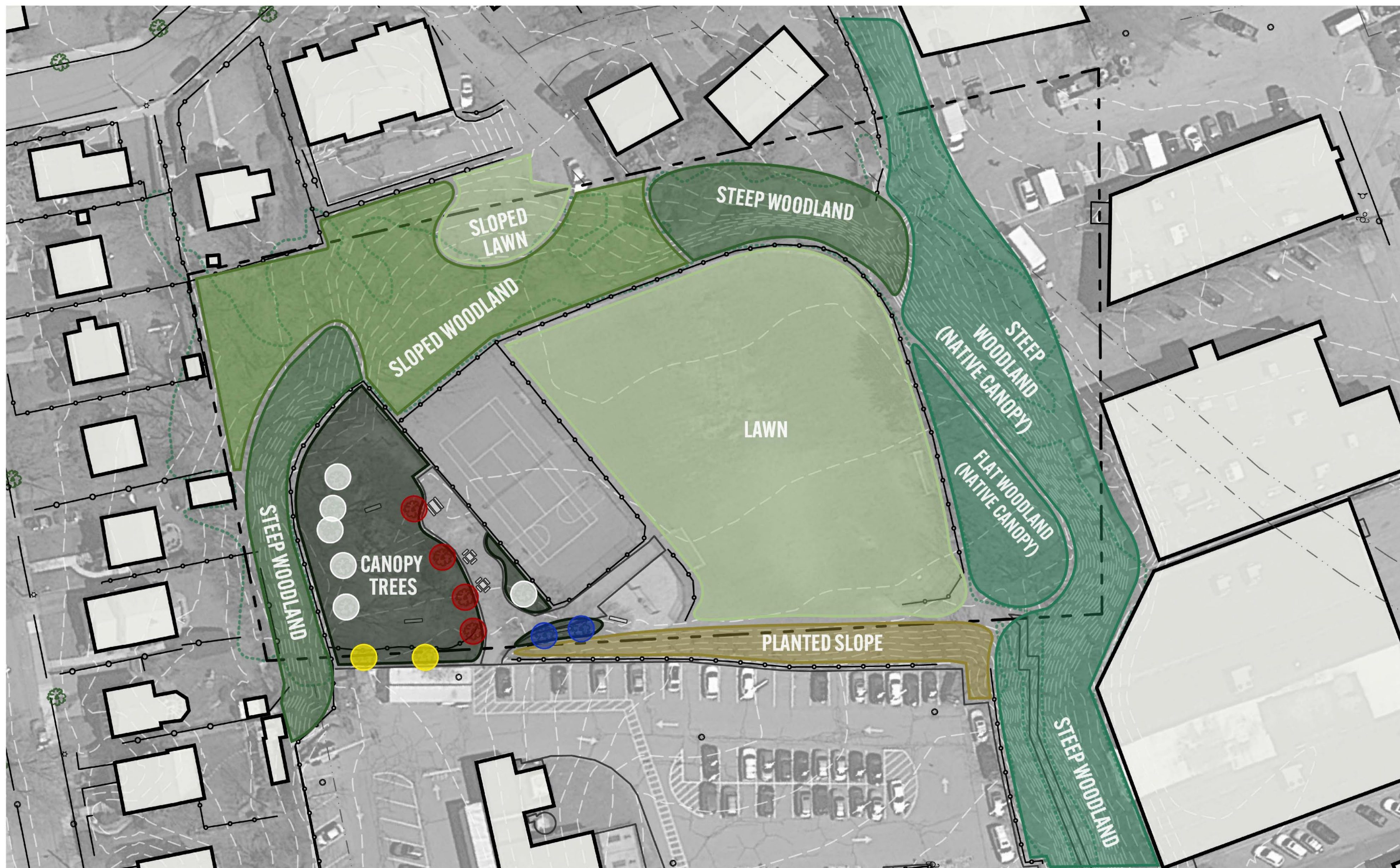


LEGEND

- PROPERTY LINE
- - - EASEMENT
- - - 1' ELEVATION CONTOUR
- ... TREE LINE
- FENCE
- BUILDING
- ⊗ EXISTING TREE
- ⊞ BENCH / PICNIC TABLE
- ⊡ UTILITY POLE
- DRAIN INLET
- ⊕ FIRE HYDRANT
- ★ LIGHT FIXTURE



ECOLOGY & VEGETATION



LEGEND

- PROPERTY LINE
- - - EASEMENT
- - - 1' ELEVATION CONTOUR
- ... TREE LINE
- FENCE
- BUILDING
- ⊗ EXISTING TREE
- ⊗ BENCH / PICNIC TABLE
- ⊗ UTILITY POLE
- ⊗ DRAIN INLET
- ⊗ FIRE HYDRANT
- ⊗ LIGHT FIXTURE
- LAWN
- PLANTED SLOPE
- WOODLAND
- STEEP WOODLAND
- CANOPY TREES
- NATIVE CANOPY
- RED MAPLE
- CRAB APPLE
- BRADFORD PEAR
- HONEY LOCUST



			①			②			③			④	
KEY / HATCH	QTY	SCIENTIFIC NAME			COMMON NAME			SIZE		SPACING		DESIGN NOTES	
TREES													
AF	1	ACER X FREEMANI 'JEFFERSRED'			AUTUMN BLAZE MAPLE			3.5-4" CAL		PER PLAN			
AL	8	AMELANCHIER LAEVIS 'CUMULUS'			ALLEGHENY SERVICEBERRY			2-2.5" CAL		PER PLAN		SINGLE STEM	
BN	1	BETULA NIGRA			RIVER BIRCH			10-12' HT, B&B		PER PLAN		MULTI STEM	
BP	7	BETULA POPULIFOLIA			GRAY BIRCH			6-7' HT, B&B		PER PLAN		MULTI STEM	
CC	1	CERCIS CANADENSIS			EASTERN REDBUD			7-8' HT, B&B		PER PLAN		MULTI STEM - VERTICAL FORM	
CV	1	CHONANTHUS VIRGINICUS			WHITE FRINGETREE			7-8' HT, B&B		PER PLAN		MULTI STEM	
CA	1	CORNUS (SWIDA) ALTERNIFOLIA			PAGODA DOGWOOD			2-2.5" CAL.		PER PLAN		SINGLE STEM	
HV	7	HAMAMELIS VIRGINIANA			WITCH HAZEL			6-7' HT, B&B - SINGLE TREEFORM		PER PLAN		SINGLE STEM, TREEFORM	
NS	2	NYSSA SYLVATICA			BLACKGUM			3-3.5" CAL		PER PLAN			
OV	6	OSTRYA VIRGINIANA			AMERICAN HOPHORNBEAM			2-2.5" CAL.		PER PLAN		SINGLE STEM	
PT	8	POPULUS TREMULOIDES			QUAKING ASPEN			(50%) 6-7' HT. MULTI (50%) 6-7' HT. SINGLE		PER PLAN		(50%) 6-7' HT. MULTI STEM (50%) 6-7' HT. SINGLE STEM	
QA	1	QUERCUS ALBA			WHITE OAK			3-3.5" CAL		PER PLAN			
QB	2	QUERCUS BICOLOR			SWAMP WHITE OAK			3-3.5" CAL		PER PLAN			
QC	1	QUERCUS COCCINEA			SCARLET OAK			3-3.5" CAL		PER PLAN			
QM	1	QUERCUS MACROCARPA			BUR OAK			3-3.5" CAL		PER PLAN			
QP	1	QUERCUS PALUSTRIS			PIN OAK			3-3.5" CAL		PER PLAN			
QR	1	QUERCUS RUBRA			NORTHERN RED OAK			3-3.5" CAL		PER PLAN			
QV	1	QUERCUS VELUTINA			BLACK OAK			3-3.5" CAL		PER PLAN			
SAPLINGS/RESTORATION-SIZED MATERIAL													
XX	1	CORNUS (BENTHAMIDIA) FLORIDA 'APPALACHIAN SPRING'			FLOWERING DOGWOOD			1-1.5" CAL.		PER PLAN		SAPLING/RESTORATION-SIZED MATERIAL	
XX	1	CORNUS (SWIDA) ALTERNIFOLIA			PAGODA DOGWOOD			1-1.5" CAL.		PER PLAN		SAPLING/RESTORATION-SIZED MATERIAL	
XX	1	FAGUS GRANDIFOLIA			AMERICAN BEECH			1-1.5" CAL.		PER PLAN		SAPLING/RESTORATION-SIZED MATERIAL	
XX	1	HALESIA CAROLINA			CAROLINA SILVERBELLS			1-1.5" CAL.		PER PLAN		SAPLING/RESTORATION-SIZED MATERIAL	
XX	1	OSTRYA VIRGINIANA			AMERICAN HOPHORNBEAM			1-1.5" CAL.		PER PLAN		SAPLING/RESTORATION-SIZED MATERIAL	
XX	1	PRUNUS SEROTINA			BLACK CHERRY			1-1.5" CAL.		PER PLAN		SAPLING/RESTORATION-SIZED MATERIAL	
PS	4	PRUNUS SEROTINA			BLACK CHERRY			1-1.5" CAL.		PER PLAN		SAPLING/RESTORATION-SIZED MATERIAL	
SHRUBS													
am	8	ARONIA MELANOCARPA			BLACK CHOKEBERRY			5 GALLON		PER PLAN			
ca	9	CLETHRA ALNIFOLIA			SWEET PEPPERBUSH			5 GALLON		PER PLAN			
iv	8	ILEX VERTICILLATA			WINTERBERRY			5 GALLON		PER PLAN			

WOODLAND UNDERSTORY			625 SQ FT			
295	SHRUBS					
	GAULTHERIA PROCUMBENS	WINTERGREEN	1 GAL	18" OC	15% of TOTAL CONTAINERS	
	PERENNIALS					
	DENNSTAEDTIA PUNCTILOBULA	HAYSCENTED FERN	1 GAL	18" OC	10% of TOTAL CONTAINERS	
	DRYOPTERIS MARGINALIS	MARGINAL WOODFERN	1 GAL	18" OC	15% of TOTAL CONTAINERS	
	EURYBIA DIVARICATA	WHITE WOOD ASTER	1 GAL	18" OC	15% of TOTAL CONTAINERS	
	MATTEUCCIA STRUTHIOPTERIS	OSTRICH FERN	1 GAL	18" OC	25% of TOTAL CONTAINERS	
	SOLIDAGO FLEXICAULIS	ZIGZAG GOLDENROD	1 GAL	18" OC	10% of TOTAL CONTAINERS	
	SYMPHYOTRICHUM CORDIFOLIUM	BLUE WOOD ASTER	1 GAL	18" OC	10% of TOTAL CONTAINERS	
	BULBS					
1500	NARCISSUS 'LONG LASTING FRAGRANT MIX'	DAFFODIL MIX	BULB	6-8" OC	LONG LASTING FRAGRANT MIX' FROM ADR OR APPROVED SUB	
POLLINATOR PATCH			1,545 SQ FT			
765	PERENNIALS					
	ACHILLEA 'PINK GRAPEFRUIT'	YARROW	1 GAL	18" OC		
	ASCLEPIAS INCARNATA	SWAMP MILKWEED	1 GAL	18" OC		
	BAPTISIA 'DECADENCE PINK TRUFFLES'	FALSE INDIGO	1 GAL	18" OC		
	CAREX BICKNELLII	BICKNELL'S SEDGE	1 GAL	18" OC		
	COREOPSIS 'SHADES OF ROSE'	TICKSEED	1 GAL	18" OC		
	ECHINACEA 'POW WOV WILD BERRY'	CONEFLOWER	1 GAL	18" OC		
	EUTROCHIUM PURPUREUM	JOE-PYE WEED	1 GAL	18" OC		
	MONARDA 'LEADING LADY PINK'	BEABALM	1 GAL	18" OC		
	MONARDA PUNCTATA	SPOTTED BEABALM	1 GAL	18" OC		
	PANICUM VIRGATUM 'SHENANDOAH'	SWITCHGRASS	1 GAL	18" OC		
	PYCNANTHEMUM MUTICUM	CLUSTERED MOUNTAIN MINT	1 GAL	18" OC		
	SYMPHYOTRICHUM NOVAE-ANGLIAE 'VIBRANT DOME'	NEW ENGLAND ASTER	1 GAL	18" OC		
RAIN GARDEN			4,705 SQ FT			
4705	SEED MIX					
	ACHILLEA MILLEFOLIUM	COMMON YARROW	4705 SQ FT	SEED	SEED SHALL BE A MIX OF THESE SPECIES AT RATES RECOMMENDED BY SEED SUPPLIER AND APPROVED WITH THE OWNER'S REPRESENTATIVE. FOR ALL SEED, USE THE FOLLOWING ECOTYPES IF AVAILABLE: NORTHEAST, MA, CT,RI,NH,VT,NY	
	ERAGROSTIS SPECTABILIS	PURPLE LOVE GRASS				
	FESTUCA BREVIPIILA	HARD FESCUE				
	FESTUCA OVINA	SHEEP FESCUE				
	FESTUCA OVINA VAR. DURIUSCULA	HARD FESCUE				
	FESTUCA OVINA VAR. GLAUCA	BLUE FESCUE				
	FESTUCA RUBRA SSP. COMMUTATA	CHEWINGS FESCUE				
	JUNCUS TENUIS	PATH RUSH				
	PANICUM SPHAEROCARPON	ROUNDSEED PANICGRASS				
	PYCNANTHEMUM TENUIFOLIUM	NARROW LEAF MOUNTAIN MINT				
	SISYRINCHUM ANGUSTIFOLIUM	NARROW LEAF BLUE EYE GRASS				
	VIOLA CORNUTA	JOHNNY JUMP UP				
	PERENNIAL PLUGS - INSTALL PLUGS IN DRIFTS, THEN OVERSEED					
2600	CAREX BREVIOR	SHORTBEAK SEDGE	DEEP PLUG	12" OC		
	CAREX VULPINOIDEA	FOX SEDGE	DEEP PLUG	12" OC		
	DESCHAMPSIA CESPITOSA	TUFTED HARIGRASS	DEEP PLUG	12" OC		
	EUTROCHIUM PURPUREUM	JOE-PYE WEED	DEEP PLUG	12" OC		
	IRIS CRISTATA	CRESTED IRIS	DEEP PLUG	12" OC		
	IRIS VERSICOLOR	BLUEFLAG IRIS	DEEP PLUG	12" OC		
	JUNCUS EFFUSUS	SOFT RUSH	DEEP PLUG	12" OC		
	PANICUM VIRGATUM 'CAPE BREEZE'	SWITCHGRASS	DEEP PLUG	12" OC		
	VERBENA HASTATA	BLUE VERVAIN	DEEP PLUG	12" OC		
BULBS						
1500	CAMASSIA QUAMASH	COMMON CAMAS	BULB	6-8" OC		
1500	SCILLA SIBERICA	WOOD SQUILL	BULB	6-8" OC		
2500	CHIONODOXA LUCILIAE	GLORY-OF-THE-SNOW	BULB	6-8" OC		
3000	MUSCARI ARMENIACUM	GRAPE HYACINTH	BULB	6-8" OC		
PIONEER HILL			6,535 SQ FT			
6535	LOW-MOW POLYCULTURE LAWN SEED - PRO TIME LAWN SEED PT 755 FLEUR DE LAWN SEED MIX					
	ACHILLEA MILLEFOLIUM 'YAAK'	WHITE YAAK YARROW	6535 SQ FT	SEED	SEED SHALL BE A MIX OF THESE SPECIES AT RATES RECOMMENDED BY SEED SUPPLIER AND APPROVED WITH THE OWNER'S REPRESENTATIVE.	
	BELLIS PERENNIS	ENGLISH DAISY				
	FESTUCA OVINA 'QUATRO'	QUATRO TETRAPLOID SHEEP FESCUE				
	FESTUCA TRACHYPHYLLA	HARD FESCUE				
	LOBULARIA MARITIMA (ANNUAL)	SWEET ALYSSUM				
	LOLIUM PERENNE	PERENNIAL RYEGRASS				
	NEMOPHILA MENZIESSII (ANNUAL)	BABY BLUE EYES				
	TRIFOLIUM FRAGIFERUM	STRAWBERRY CLOVER				
	TRIFOLIUM REPENS	WHITE CLOVER				

CLIENT

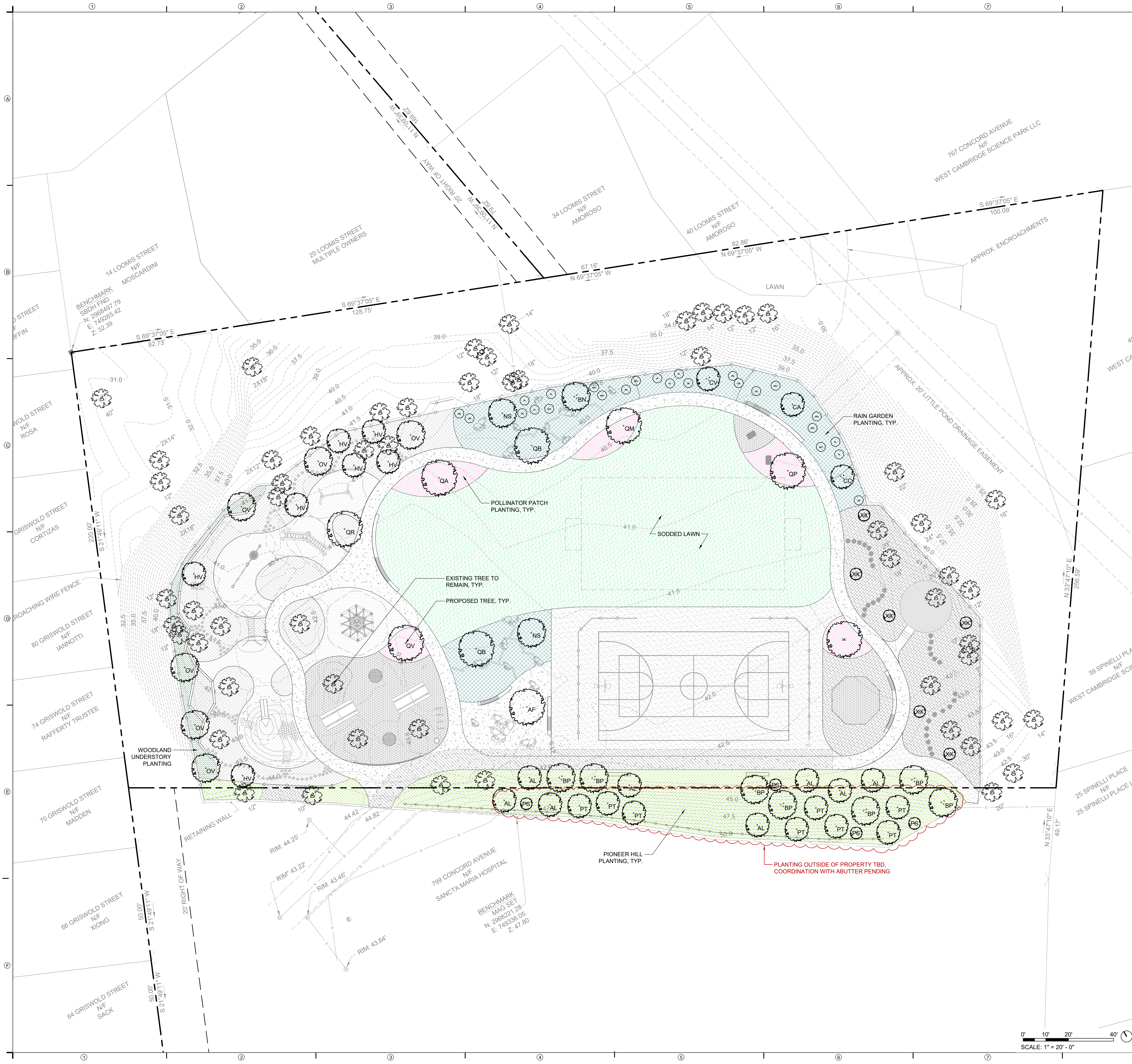


360 Huntington Ave | Boston, MA | 02115
p 508.641.0221

LANDSCAPE ARCHITECT



547 Rutherford Ave | Charlestown, MA | 02129
p 617.5



PLANTING LEGEND

- SODDED LAWN
- WOODLAND UNDERSTORY
- POLLINATOR PATCH
- PIONEER HILL
- RAIN GARDEN
- EXISTING TREE TO REMAIN
- PROPOSED TREE

CLIENT



360 Huntington Ave | Boston, MA | 02115
p 508.641.0221

LANDSCAPE
ARCHITECT



547 Rutherford Ave | Charlestown, MA | 02129
p 617.500.6530

PLAYGROUND
DESIGNER

studio **MLA** ARCHITECTS

How the Early Childhood Education Studio of Landscapes Architects

ASHLEY MCGRAW
ARCHITECTS



320 Washington Street, Fl. 2 | Brookline, MA | 02445
p 617.608.1551

CIVIL
ENGINEER



90 Route 6A, Unit 1 | Sandwich, MA | 02563
p 508.833.6600

ELECTRICAL
ENGINEER

Thompson engineering company
CONSULTING ENGINEERS

89 Newbury St, Suite 103 | Danvers, MA | 01923
p 617.886.9066

IRRIGATION
DESIGNER



20 Merritt Parkway- 2nd Floor | Nashua, NH | 03062
p 978.433.8972

PROJECT

RAFFERTY PARK RENOVATION PROJECT CAMBRIDGE, MA

STAMP

NOT FOR
CONSTRUCTION

ISSUE DATE: NOVEMBER 27, 2024

REVISIONS

#	DATE	DESCRIPTION

DRAWN: CAU REVIEWED: WQS

50% DESIGN
DEVELOPMENT

PROJECT NUMBER: 24003

PLANTING PLAN

SHEET NUMBER

L-610