

## **City of Cambridge Committee on Public Planting**

Meeting Minutes –May 14, 2025 - 5:30-7:00 pm

Hybrid Meeting via Zoom & at DPW - 147 Hampshire Street

### **Attendance** (\* indicates virtual attendance)

CPP Members: Ahron Lerman\*, Cindy Carpenter\*, Chantal Eide, Cynthia Smith, Gretchen Friesinger, Maggie Booz, Ray Fahrner, Sophia Emperador, Tracey Orr\* [*Members not in attendance*: Robb Johnson, Sara Cohen]

DPW/City of Cambridge: Abby Bentley, Ellen Coppinger, Kevin Beuttell\*, David Lefcourt

Guests & members of the public: Sandra Fairbank, Charlie Teague, Heather Hoffman

Meeting notes submitted by: Cynthia Smith

---

### **Agenda Items:**

- Review agenda
- Review previous meeting minutes
- Updates from City Arborists/Urban Forest Team
- Current and upcoming outreach efforts
- CPP Membership Status
- Presentation by Ellen Coppinger
- Design Updates
- Other Business & Announcements:
- Public Comments

### **1) Review of prior meeting minutes**

- a. Sophia reviewed previous meeting minutes for April 2025.
- b. No edits or questions were asked regarding the draft meeting minutes presented.
- c. Cynthia motioned to approve the meeting minutes. Gretchen seconded.

### **2) Updates from City Arborists/Urban Forestry Team and Miscellaneous Committee Activities**

- a. Arbor Week Activities included a 3rd Miyawaki forest planting @ front entrance of Peabody School at Ringe Avenue with volunteers.
- b. Dave Lefcourt gave a talk to the public the week before as part of Arborweek..
- c. Next Miyawaki forests will be located at Russell Field (1,000 sf) and within the Linear Park
- d. House Doctors Contracts have been renewed. There are currently several types of House Doctor Contracts including ones for Engineering, Landscape architecture, Planning and Architectural. (Some of the contracts are multi-disciplinary.) The City (Owen O'Reardon) has suggested that Cambridge consider consolidating some of these contracts in the future as there may be too many. (TBD in future.) Kevin will provide a complete listing of the current consultants and their sub-consultants who currently have House Doctor Contracts.

- e. Proposed DCR-related Planting to be undertaken by City: DCR is currently reviewing the 120 tree locations proposed by the city on the Commonwealth's property within the city boundaries. The locations include areas within the R.O.W's of: Alewife Parkway, Cambridge Parkway, Memorial Drive, and Mass Ave. at Harvard Bridge. The trees will be a combination of B&B and bare root trees. The city is planning on retrofitting a Plow truck to become a watering truck for these DCR tree planting sites.
- f. Danehy Park: One hundred additional trees have been approved to be planted at Danehy Park. Lahey will be starting planting the B&B trees beginning Friday, April 11, 2025. The city will also be planting the bare root trees there.
- g. Holding Nursery at Fresh Pond (Blanchard Road end of property): The trees are being cared for there including watering and compost tea.
- h. The city reminded the CPP Committee that they would like to add locations(where committee members live) to the web site. Dave Lefcourt was going to provide input to the web administrator on this.
- i. Arbor Week Recap: Arborweek related activities went well. They included tabling and handouts of tree seedlings (Winterberry, Red Bud, and Paw-Paw) at the Main CPL, temporary lawn signs (25) in various locations with fun facts about trees installed, tabling at City Hall, a tree walk by David Lefcourt, an Allied arts project at CPL sponsored by Public Art Commission and architect (Yugon Kim's office) involving a woodblock printing project of a slice of a large caliper tree.Dave also had a varnished/laquered tree slice of a large elm tree circa 1925 that had been cut down at Harvard on display outside CPL during the tabling. The city and committee volunteers have been successful in now signing up 1,000 citizens (via email) to the Forest Friends newsletter. Other activities included the Miyawaki Forest planting mentioned above. Other activities included planting of a Serviceberry at the Haggerty School and related activities with students. Next year the city is considering new locations for Arborweek programs including locations at City Hall Annex and Valente Library.
- j. Outreach Events: Fresh Pond Day will be Saturday, June 14, 2025. Volunteers are needed from our Committee to table at this event.(Note: we have since decided not to have a table for Fresh Pond day. The city may still hand out Public Works related SWAG including Coloring Books and magnets, etc.
- k. Committee on Public Planting (CPP) Membership: The Cambridge Pulic Planting Committee has a maximum of 21 or 22 members eligible for the Committee at any given time. The City is currently advertising starting June 2 for interested residents to apply for the Committee. They will be putting the information about volunteering for the Committee on the Forest Friends website. There are 13 neighborhoods in the city and there is a desire to have all the neighborhoods represented to the extent possible. (Note: Committee member, Ruth Loetterle, recently resigned from the Committee and Sandra Fairbanks now lives in Vermont so our committee is looking for roughly 6 new members. The goal is to have new members for the Committee on board by September 2025.
- l. CPP By-Laws require that our Committee have a Secretary and this position is not currently filled. Sophia nominated Maggie Booz for this position and she accepted. The Committee unanimously voted for her to be the Secretary. The Committee will continue to rotate the responsibility of note taking amongst Committee members but the Secretary will be responsible for issuing the notes and putting them on the website, etc.

#### **CPP Comments:**

No additional comments beyond those captured above were made.

.....

## **2) Presentation by Ellen Coppinger, City of Cambridge, Landscape Administration for Public-Private Partnership**

- a. Ellen serves as a liaison to different city divisions and departments within the city. In this capacity, her work includes Volunteer Events; working with the various Cambridge Business Associations; and works with Public Works Department on various landscape related projects including seasonal lighting and planting displays.
- b. She began her career as a Landscape Gardener at the Minuteman National Park in Concord, MA where she installed and maintained a collection of mixed perennial gardens and related landscapes. She worked at Peter Hornbeck's office, an esteemed Landscape architect and Horticulturalist and had a Landscape-related family Design Build Business so she has a strong foundation in horticulture and landscape planting.
- c. For the city of Cambridge, she is responsible for overseeing roughly 94 landscape sites (plazas and landscape islands, with a focus on annuals, perennials, hanging flower baskets and seasonal displays, etc.) that are generally being maintained by outside landscape contractors for the city. She is also responsible for the seasonal planting baskets that are in ground at Street trees (55 baskets total in highly visible civic sites plus 80 additional baskets on Binney Street that Alexandria Associates is responsible for maintaining).
- d. In addition, EC works with businesses and residents and other Public Works staff on the Tree watering program, the Pollinator Gardens (Aberdeen Ave., etc.) and planting of incidental trees and plant material with an emphasis on Natives. At Aberdeen, the landscape has pop-up irrigation heads to water the landscape for establishment.
- e. Recently, she has been involved in the PB Project at Brookline Street and Watson Streets near MIT.
- f. Ellen has a leading role in the city's De-Paving initiative where additional planting strips are found from previously hardscape sites, transforming them into areas with more trees, understory planting and groundcover.
- g. One De-Paving site mentioned is at Pemberton Street and involved the replacement of 11 or 12 trees, bulb planting, perennials and murals. These kind of projects are community-oriented and make neighborhoods feel more special.
- h. Additional projects include special plantings at Flagstaff Park across from Cambridge Common where a turf lawn area over the MBTA transit tunnels has become a wildflower meadow (*Rudabeckia*, etc.) The effect is quite spectacular and involved successive over-seeding for establishment. The front side of Flagstaff along Mass. Ave. will also be planted with perennials.
- i. Other projects include the Planting at the backside of Toomey Park at 2nd Street and Rogers Street; supplementary plantings at Huron Avenue; Western Ave; Harvard Square; Central Square; Special Lighting installations at parks and squares; Longfellow Park; Brookline & Tudor; Sennett Park Edge—the list goes on. On her Wish List is to add more Pollinator Gardens some of which are being funded and implemented as part of the city's PB program.

**CPP Comments:**

EC received a round of applause for all the work she has been doing over the decades to Green the city and beautify the parks, square and landscapes.

- David Webster suggested adding more Pollinator Gardens in the city.
- Cynthia Smith asked about what primary nurseries she works with for her small projects. Her answer was North Creek, Millican Nursery, and Bigelow Nursery for trees and shrubs, and Noonan's Greenhouse and Cavicchio's for perennials and annuals and basket materials, etc.
- Maggie Booz, CPP had a question about the Maintenance contracts for these type of projects. EC said the projects include Maintenance including spring and fall cleanups, monthly visits, weeding and trash pickups. There was also a comment MB made about Cambridge Garden Club initiating weeding events for areas like tree wells.

**3) Updates from CDD**

- a. Courtney and Lev, CDD, were not in attendance at this month's meeting. Kevin Beutrell, CDD Landscape architect, provided some project updates.
- b. Rafferty Park: completion of 100% Construction Documents is pending communication and resolution of r.o.w. Issues with Santa Maria, the adjacent landowner regarding pedestrian access to park through their parking lot, etc. and resolving some infrastructure interfaces. KB said CPP could review the final plant list. It is a very diverse plant palette with emphasis on native plantings. Lawns will be irrigated and planting beds will be irrigated during plan establishment by contractors using quick couplers.
- c. Raymond Park: is at the 100% Construction Document phase as well. The consultants are responding to final comments from the city and the project will be out to bid within a month. Given limitations to the construction budget, some of the proposed planting will be add-alternates. KB indicated that the city would like the consultant to add in a bit more native plant material before sending it out to bid. KB said that some in the neighborhood had expressed concerns about the amount of new pavement proposed. (Some believed that the perimeter path within the park should not be implemented as it resulted in a net increase in SF of pavement. Also, part of the playground surface is wood fiber and part is safety surfacing. There is a tradeoff here in the hard surface providing greater accessibility vs. other surfaces provided greater permeability. Re: existing and proposed planting in the park, 2 existing Dawn Redwoods will be transplanted and 3 other small trees (2 Yellowwoods and 1 Linden.)
- d. Linear Park: the city has received draft bid documents and will get out to bid this summer within the next 2-4 weeks. The city anticipates mobilization of a Contractor late summer with a startup in the Fall 2025.
- e. MAPS-Mass. Ave. Planning Study: CDD has presented their final draft to the Community for the area between Cambridge Common and Alewife.
- f. **CPP Comments:** It was suggested that we shouldn't wait until drawings are so far along for the Mass Ave. corridor for CPP to review the documents. (Often with the city nothing changes after the 25% so it's at this stage we should be reviewing documents for our comments.)

**Items for further/future discussion:** There will be a field trip in July. Locations suggested by CPP members include North Massachusetts Avenue and Danehy Park. Final itinerary and date, etc. will be finalized at our next meeting.

.....

**Public comments:** Question re: MBTA Approval of Linear Park Design. City said Approval is expected in late summer/early fall.

**Next meeting:** Our next Zoom meeting will be held on June 11, 2025 at 5:30 pm and will be advertised to the public in advance.

*NOTE: The foregoing represents our understanding of the discussions and decisions made during this meeting. The CPP requests permission to quote or reference these notes.*

*Attachments:*

*1. CDD presentation: Updates on Rafferty Park and Raymond Park*

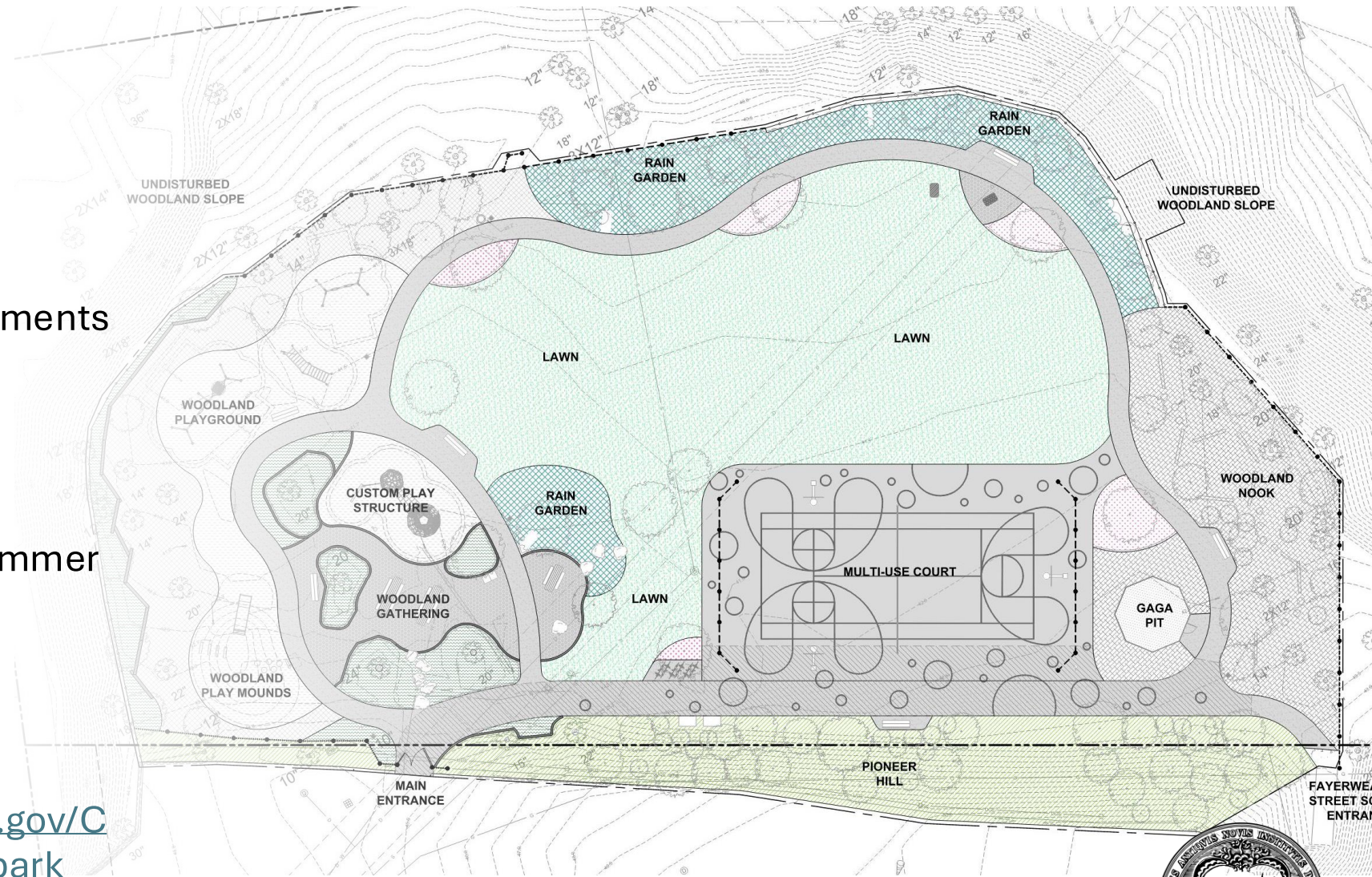
*(Draft prepared 6/10/25)*



# Rafferty Park

## Update:

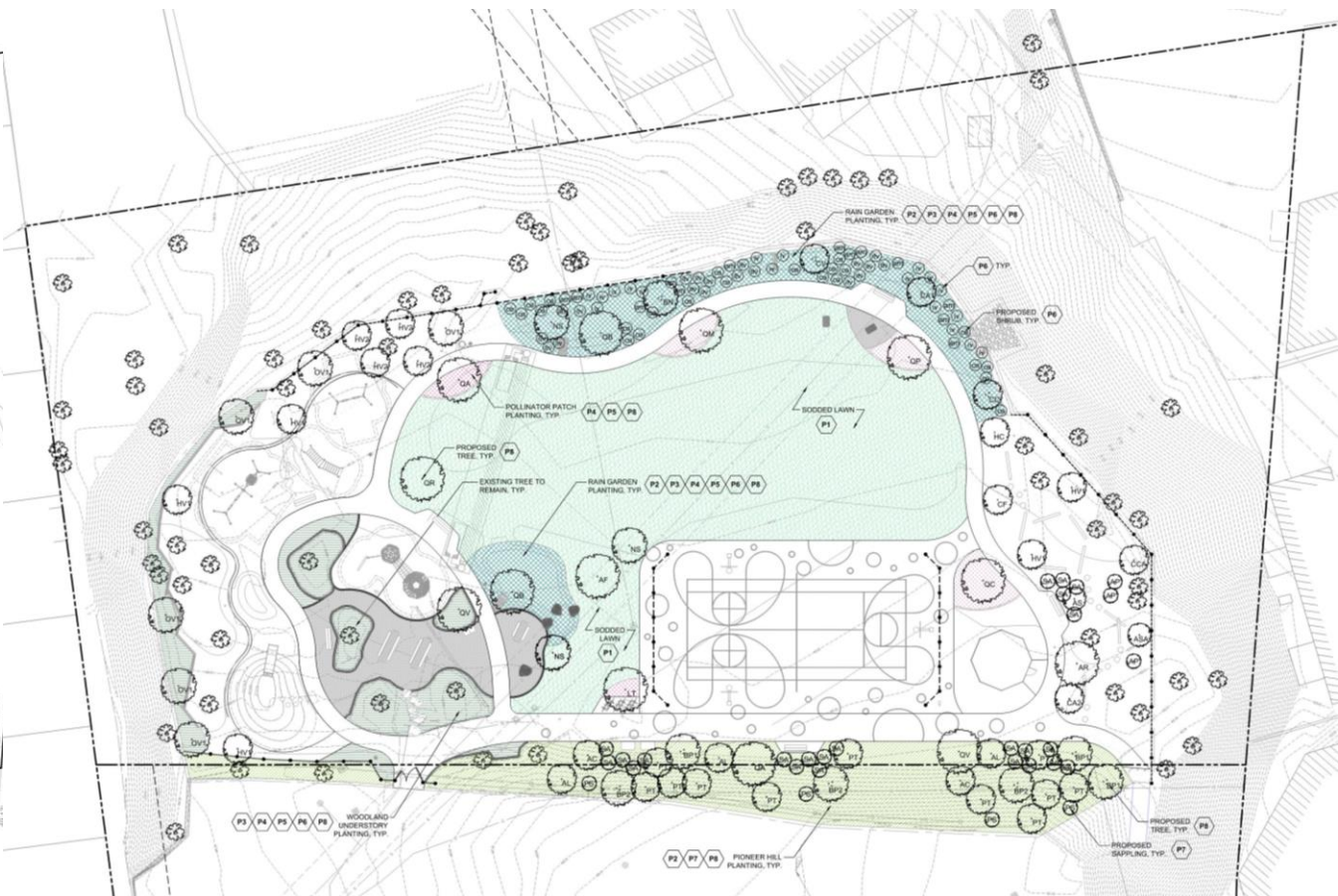
- **Now** – City staff is working through construction agreements with Sancta Maria prior to releasing a construction Invitation for Bids (IFB)
- **Summer** – Construction is anticipated to begin this summer
- **Duration** -- Anticipate Construction to take 12-18 months
- **Project Website:**  
<https://www.cambridgema.gov/CDD/Projects/Parks/raffertypark>





## Rafferty Plan Presented, November 2024

## Rafferty Plan 100% Design, April 2025



# Committee on Public Planting - Rafferty Park





# Rafferty Plant Schedule 100% Design, April 2025

KEY / HATCH	QTY	SCIENTIFIC NAME	COMMON NAME
TREES			
AR	1	ACER RUBRUM	RED MAPLE
AF	1	ACER X FREEMANII 'JEFFERSRED'	AUTUMN BLAZE MAPLE
AC	2	AMELANCHIER CANADENSIS	SERVICEBERRY
AL	3	AMELANCHIER LAEVIS 'CUMULUS'	ALLEGHENY SERVICEBERRY
BN	1	BETULA NIGRA	RIVER BIRCH
BP1	3	BETULA POPULIFOLIA	GRAY BIRCH
BP2	3	BETULA POPULIFOLIA	GRAY BIRCH
CCA	1	CARPINUS CAROLINIANA	AMERICAN HORNBEAM
CC	1	CERCIS CANADENSIS	EASTERN REDBUD
CV	1	CHIONANTHUS VIRGINICUS	WHITE FRINGETREE
CA1	1	CORNUS ALTERNIFOLIA	PAGODA DOGWOOD
HV1	5	HAMAMELIS VIRGINIANA	WITCH HAZEL
HV2	4	HAMAMELIS VIRGINIANA	WITCH HAZEL
LT	1	LIRIODENDRON TULIPIFERA	TULIPTREE
NS	3	NYSSA SYLVATICA	BLACKGUM
OV1	6	OSTRYA VIRGINIANA	AMERICAN HOPHORNBEAM
PT	11	POPULUS TREMULOIDES	QUAKING ASPEN
QA	2	QUERCUS ALBA	WHITE OAK
QB	2	QUERCUS BICOLOR	SWAMP WHITE OAK
QC	1	QUERCUS COCCINEA	SCARLET OAK
QM	1	QUERCUS MACROCARPA	BUR OAK
QP	1	QUERCUS PALUSTRIS	PIN OAK
QR	1	QUERCUS RUBRA	NORTHERN RED OAK
QV	2	QUERCUS VELUTINA	BLACK OAK
SAPLINGS/RESTORATION-SIZED MATERIAL			
AP	3	ACER PENSYLVANICUM	STRIPED MAPLE
ASA	1	ACER SACCHARINUM	SILVER MAPLE
AS	1	ACER SACCHARUM	SUGAR MAPLE
CA2	1	CORNUS ALTERNIFOLIA	PAGODA DOGWOOD
CF	1	CORNUS FLORIDA 'APPALACHIAN SPRING'	FLOWERING DOGWOOD
HC	1	HALESIA CAROLINA	CAROLINA SILVERBELLS
PS	4	PRUNUS SEROTINA	BLACK CHERRY
SA	23	SASSAFRAS ALIBIDUM	SASSAFRAS
SHRUBS			
am	14	ARONIA MELANOCARPA	BLACK CHOKEBERRY
ca	23	CLETHRA ALNIFOLIA	SWEET PEPPERBUSH
iv	18	ILEX VERTICILLATA	WINTERBERRY
itv	18	ITEA VIRGINICA	VIRGINIA SWEETSPIRE

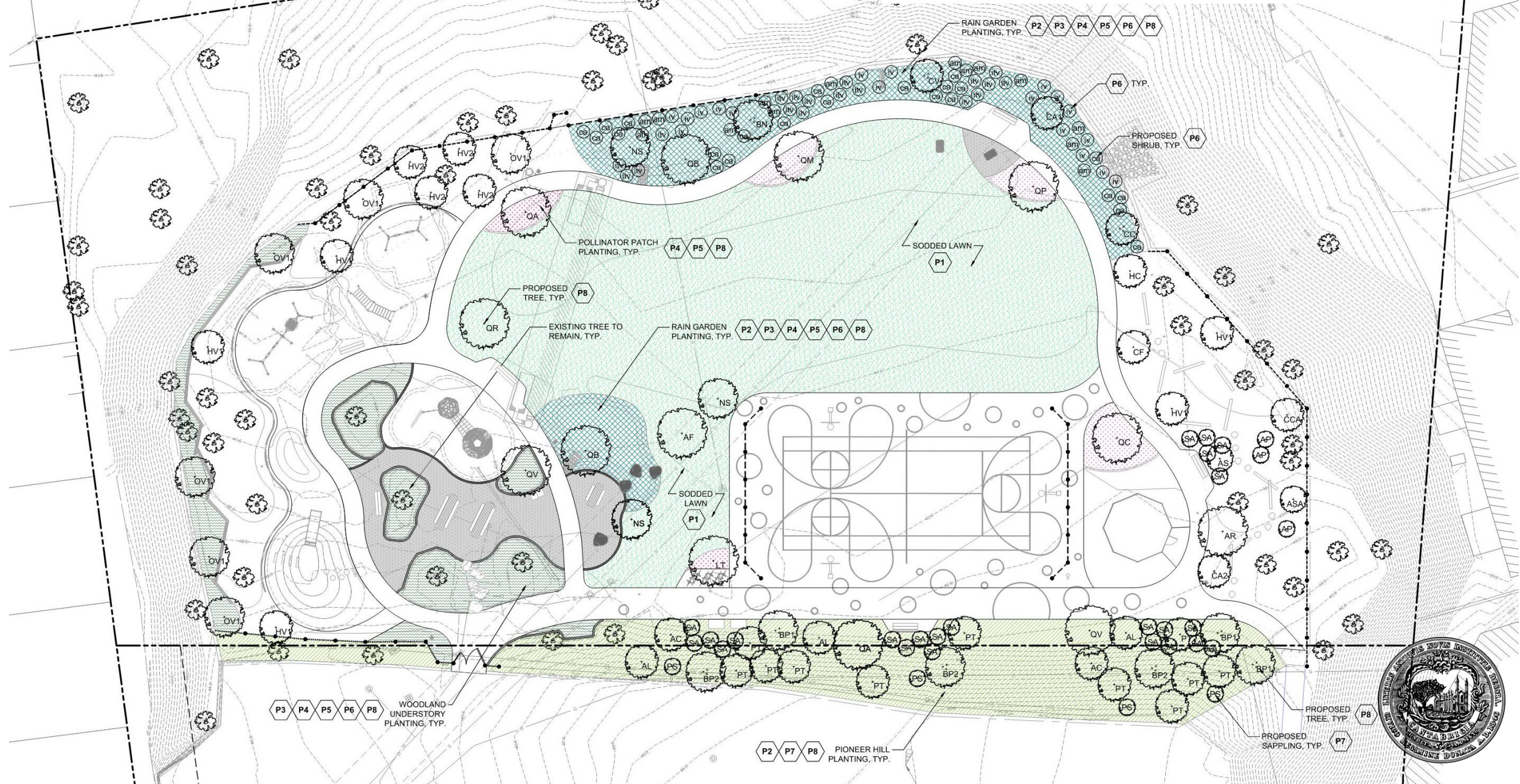
WOODLAND UNDERSTORY - LAYOUT OF PLANTS TO BE COMPLETED BY L.A. IN THE FIELD		
	SHRUBS	
	20	DIERVILLA LONICERA BUSH HONEYSUCKLE
	PERENNIALS - CONTAINERS	
	50	ACTAEA RACEMOSA BLACK COHOSH
	150	DENNSTAEDTIA PUNCTLOBULA HAYSCENTED FERN
	300	DRYOPTERIS MARGINALIS MARGINAL WOODFERN
	150	GAULTHERIA PROCUMBENS WINTERGREEN
	250	MATTEUCCIA STRUTHIOPTERIS OSTRICH FERN
	100	SYMPHYOTRICHUM CORDIFOLIUM BLUE WOOD ASTER
	PERENNIALS - LANDSCAPE PLUGS	
	350	EURYBIA DIVARICATA WHITE WOOD ASTER
	200	SOLIDAGO FLEXICAULIS ZIGZAG GOLDENROD
	BULBS	
	1500	NARCISSUS 'LONG LASTING FRAGRANT MIX' DAFFODIL MIX
POLLINATOR PATCH		
	PERENNIALS - CONTAINERS	
	56	ACHILLEA 'PINK GRAPEFRUIT' YARROW
	50	ASCLEPIAS INCARNATA SWAMP MILKWEED
	40	BAPTISIA 'BLUE SUNDAE' FALSE INDIGO
	56	COREOPSIS 'SHADES OF ROSE' TICKSEED
	56	ECHINACEA 'MAGNUS' CONEFLOWER
	23	EUTROCHIMUM 'BABY JOE' JOE-PYE WEED
	60	GERANIUM MACULATUM WILD GERANIUM
	50	MONARDA 'LEADING LADY PINK' BEABALM
	23	PANICUM VIRGATUM 'SHENANDOAH' SWITCHGRASS
	23	PYCNANTHEMUM MUTICUM CLUSTERED MOUNTAIN MINT
	40	PYCNANTHEMUM TENUIFOLIUM NARROWLEAF MOUNTAINMINT
	34	SYMPHYOTRICHUM NOVAE-ANGLIAE 'VIBRANT DOME' NEW ENGLAND ASTER
	PERENNIALS - LANDSCAPE PLUGS	
	100	CONOCLINIUM COELESTINUM BLUE MIST FLOWER
	200	ERAGROSTIS SPECTABILIS PURPLE LOVEGRASS
	100	VIOLA SORORIA COMMON BLUE VIOLET
	200	WALDSTEINIA FRAGARIOIDES BARREN STRAWBERRY

RAIN GARDENS		
	SEED MIX	
	3900	ACHILLEA MILLEFOLIUM COMMON YARROW
		ERAGROSTIS SPECTABILIS PURPLE LOVE GRASS
		FESTUCA BREVIPILO HARD FESCUE
		FESTUCA OVINA SHEEP FESCUE
		FESTUCA OVINA VAR. DURISUSCULA HARD FESCUE
		FESTUCA OVINA VAR. GLAUCA BLUE FESCUE
		FESTUCA RUBRA SSP. COMMUTATA CHEWINGS FESCUE
		JUNCUS TENUISSIMUS PATH RUSH
		PANICUM SPHAEROCARPON ROUNDSEED PANICGRASS
		PYCNANTHEMUM TENUIFOLIUM NARROW LEAF MOUNTAIN MINT
		SISYRINCHIMUM ANGUSTIFOLIUM NARROW LEAF BLUE EYE GRASS
		VIOLA CORNUTA JOHNNY JUMP UP
	PERENNIALS - CONTAINERS	
	43	EUTROCHIMUM PURPUREUM JOE-PYE WEED
	65	IRIS VERSICOLOR BLUEFLAG IRIS
	54	VERBENA HASTATA BLUE VERVAIN
	54	VERNONIA LETTERMANII 'IRON BUTTERFLY' IRONWEED
	PERENNIALS - LANDSCAPE PLUGS - INSTALL PLUGS IN DRIFTS, THEN OVERSEED	
	400	CAREX BREVIOR SHORTBEAK SEDGE
	240	CAREX VULPINOIDEA FOX SEDGE
	320	DESCHAMPSIA CESPITOSA TUFTED HARRIGRASS
	240	IRIS VERSICOLOR BLUEFLAG IRIS
	240	JUNCUS EFFUSUS SOFT RUSH
	180	PANICUM VIRGATUM 'CAPE BREEZE' SWITCHGRASS
	BULBS	
	1500	CAMASSIA QUAMASH COMMON CAMAS
	1500	SCILLA SIBERICA WOOD SQUILL
	2500	CHIONODOXA LUCILAE GLORY-OF-THE-SNOW
	3000	MUSCARI ARMENIACUM GRAPE HYACINTH
PIONEER HILL		
	LOW-MOW POLYCULTURE LAWN SEED - PRO TIME LAWN SEED 'PT 755 FLEUR DE LAWN' SEED MIX	
	6410	ACHILLEA MILLEFOLIUM 'YAAK' WHITE YAAK YARROW
		BELLIS PERENNIS ENGLISH DAISY
		FESTUCA OVINA 'QUATRO' QUATRO TETRAPLOID SHEEP FESCUE
		FESTUCA TRACHYPHYLLA HARD FESCUE
		LOBULARIA MARITIMA (ANNUAL) SWEET ALYSSUM
		LOLIUM PERENNE PERENNIAL RYEGRASS
		NEMOPHILA MENZIESII (ANNUAL) BABY BLUE EYES
		TRIFOLIUM FRAGIFERUM STRAWBERRY CLOVER
		TRIFOLIUM REPENS WHITE CLOVER





## Rafferty Plan 100% Design, April 2025





# Raymond Park

## Update:

- **Now** – City staff is working to finalize bid package to release a construction Invitation for Bids (IFB) within the next month
- **Summer** – Construction is anticipated to begin this summer (after June 21)
- **Duration** -- Anticipate Construction to take 12-18 months
- **Project Website:** <https://www.cambridge.ma.gov/CDD/Projects/Parks/raymondpark>

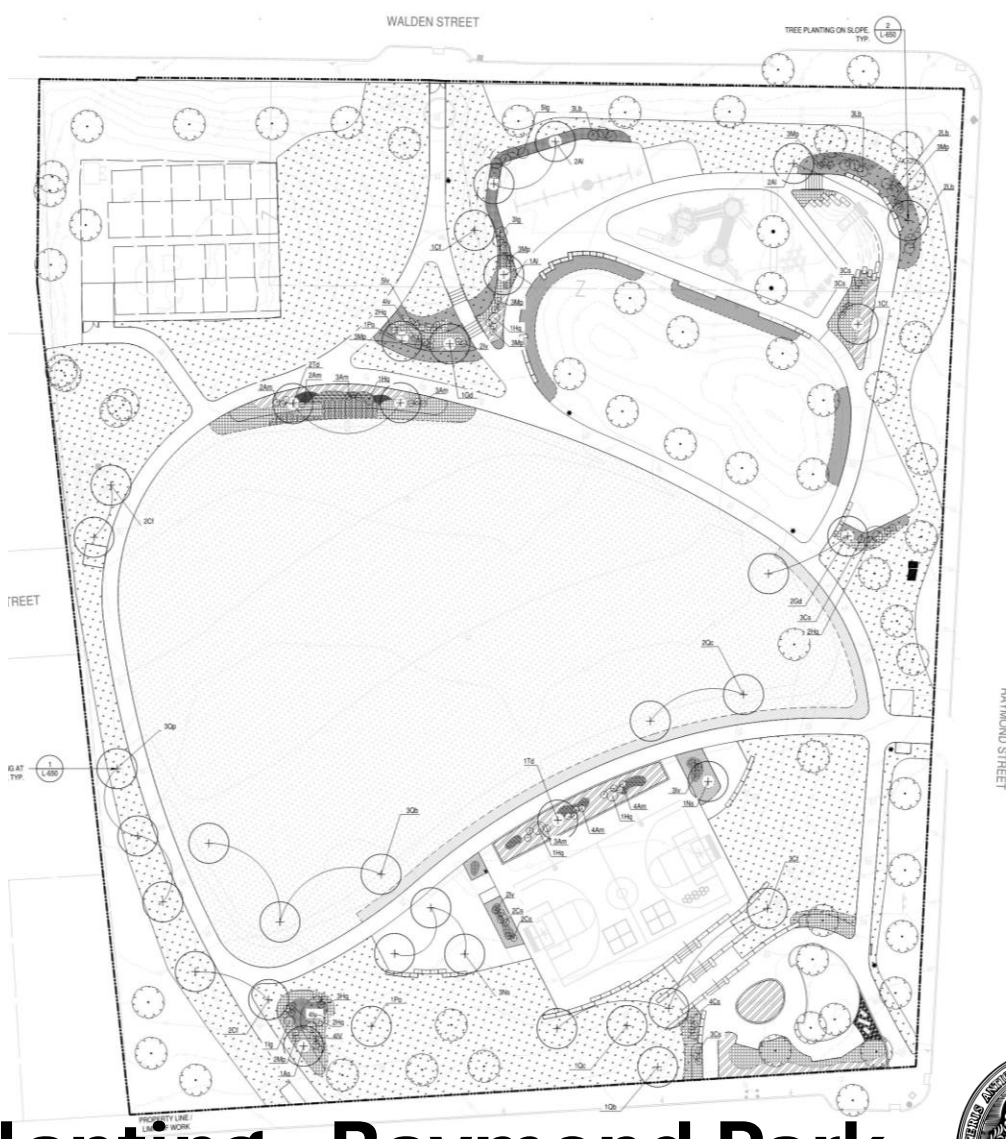




**Raymond Plan Presented, December 2024**



**Raymond Plan 100% Design, May 2025**



**Committee on Public Planting - Raymond Park**





# Raymond Plant Schedule 100% Design, May 2025

SYMBOL	CODE	BOTANICAL NAME	COMMON NAME
CANOPY TREES			
	As	Acer saccharum	Sugar Maple
	Ns	Nyssa sylvatica	Black Tupelo
	Gd	Gymnocladus dioicus 'Espresso'	Kentucky coffee tree 'espresso'
	Po	Platanus occidentalis	Sycamore
	Td	Taxodium distichum	Bald cypress
	Qc	Quercus coccinea	Scarlet oak
	Qb	Quercus bicolor	Swamp white oak
	Qp	Quercus palustris	Pin oak
UNDERSTORY TREES			
	Al	Amelanchier laevis	Service berry
	Cf	Cornus florida	Flowering Dogwood
SHRUBS			
	Am	Aronia melanocarpa	Black Chokeberry
	Cs	Cornus sericea	Red twig dowwood
	Hq	Hydrangea quercifolia	Oak-leaved hydrangea
	Mp	Myrica pensylvanica	Northern bayberry
	Ig	Ilex glabra	Inkberry
	Iv	Ilex verticillata	Winterberry 'Berry Poppins'
	Iv	Ilex verticillata	Winterberry 'Mr. Poppins'
	Lb	Lindera benzoin	Northern spicebush
PERENNIALS & GRASSES			
	hatch	Carex pensylvanica	Pennsylvania carex
	hatch	Echinacea purpurea	Purple Coneflower
	hatch	Geranium maculatum	Wild Geranium
	hatch	Iris versicolor	Northern blue flag iris
	hatch	Lobelia cardinalis	Cardinal flower
	hatch	Pycnanthemum muticum	Short toothed mountain mint
	hatch	Rhus aromatica 'gro-low'	Gro-low Fragrant Sumac
	hatch	Rudbeckia hirta	Black Eyed Susan
	hatch	Sporobolus heterolepis	Prarie dropseed
GROUNDCOVERS			
	hatch	Lamium maculatum	Spotted dead nettle





## Raymond Plan 100% Design, May 2025

