



MIT ✱ **2016**

Celebrating a Century in Cambridge

Town Gown Report **to the City of Cambridge**

February 7, 2017

New Community Engagement Initiatives



- Annual Together in Service Day
- Pathways to Invention
- MIT Impact Scholarships
- Kendall Wi-Fi
- K-12 Outreach Administrator



MIT Wants to Make a Better World

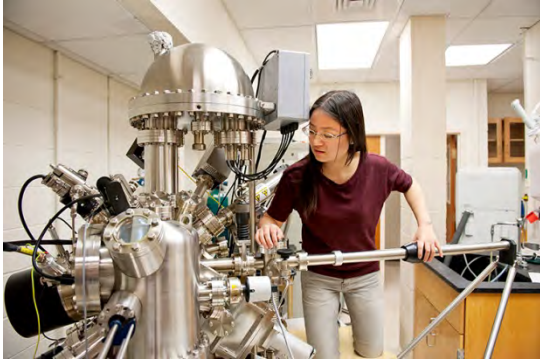


Priorities

Discovery Science
Health of the Planet
Human Health
Innovation & Entrepreneurship
Teaching, Learning, & Living
The MIT Core



MIT and the Innovation Ecosystem

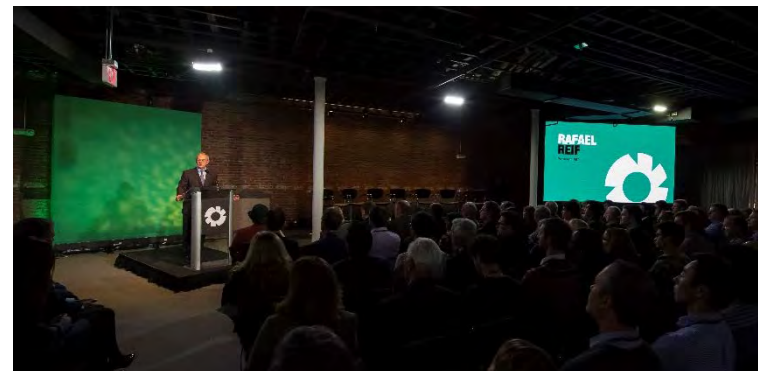
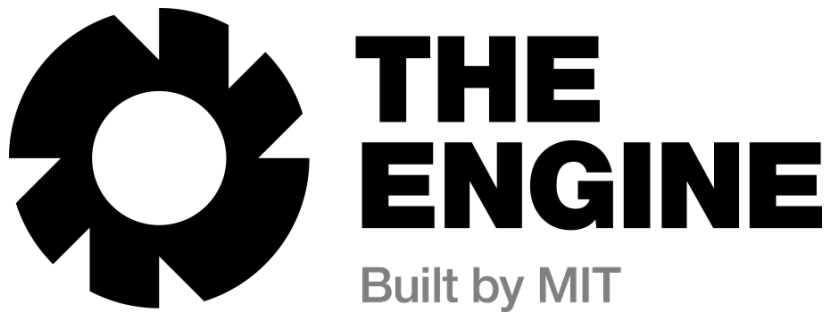
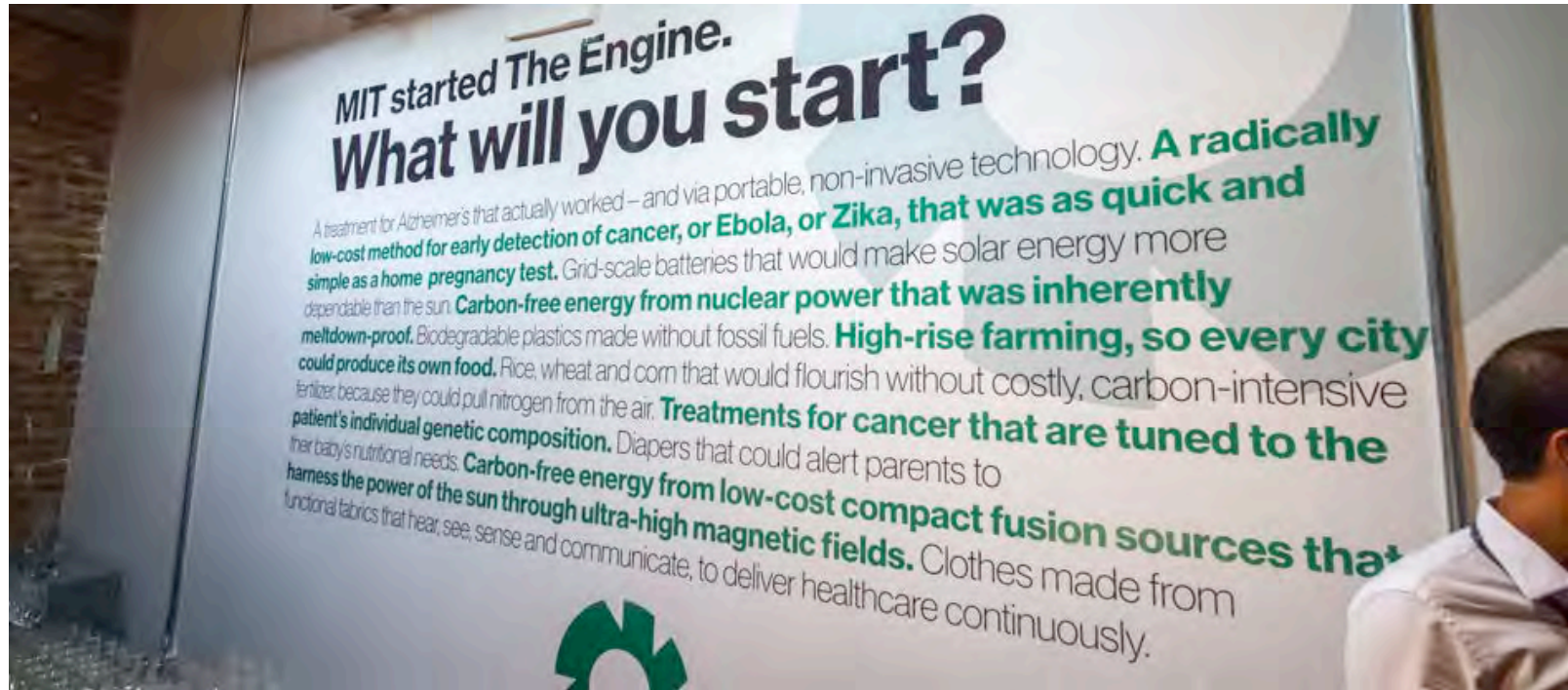


Capitalizing on the power of proximity and facilitating the advancement of innovation from the lab to the marketplace.

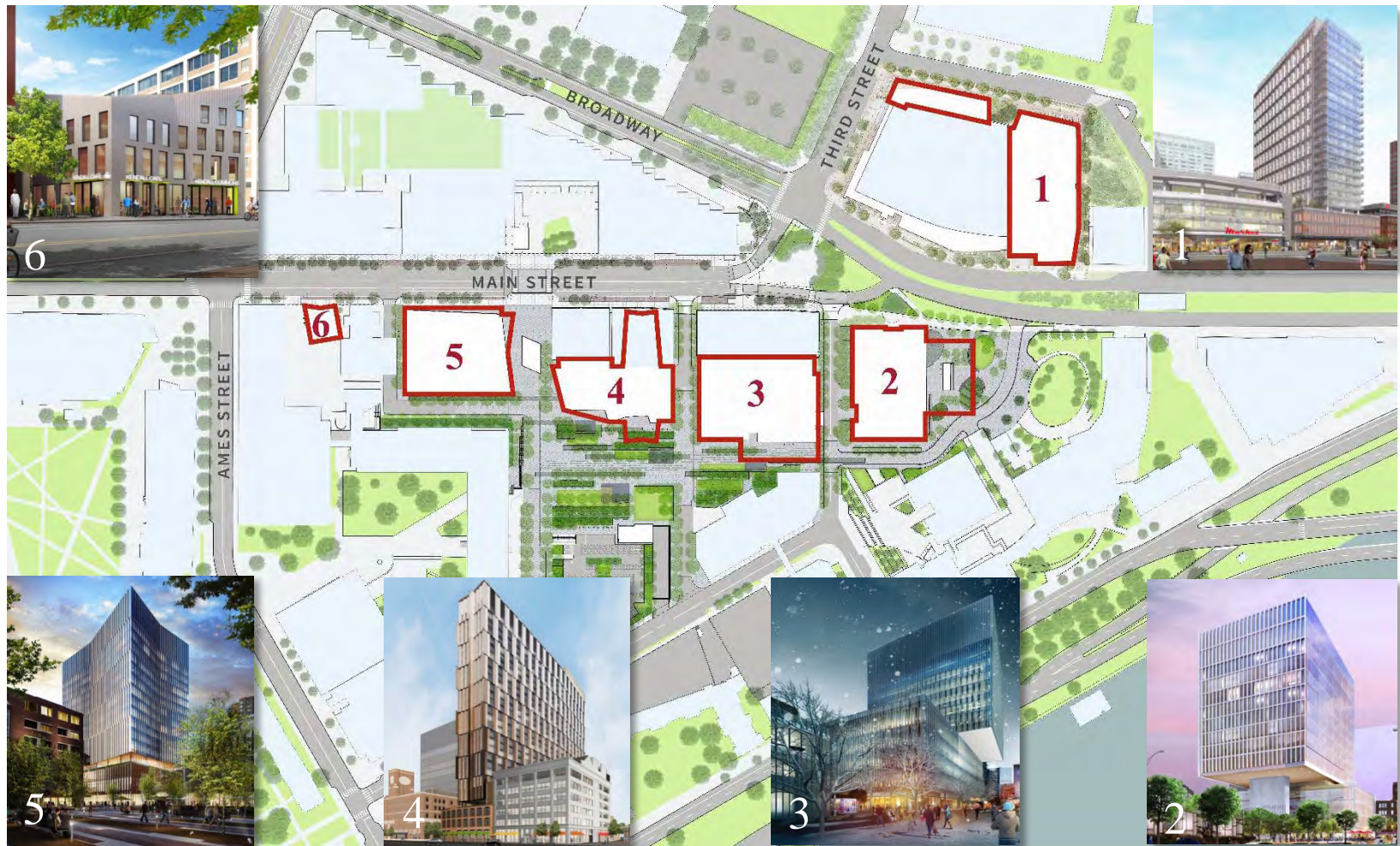
- Martin Trust Center for MIT Entrepreneurship
- MIT Deshpande Center for Technological Innovation
- MIT MakerWorks
- MIT Innovation Initiative
- The Engine
- Kendall Square Initiative
- Volpe



The Engine



Kendall Square Initiative



Volpe

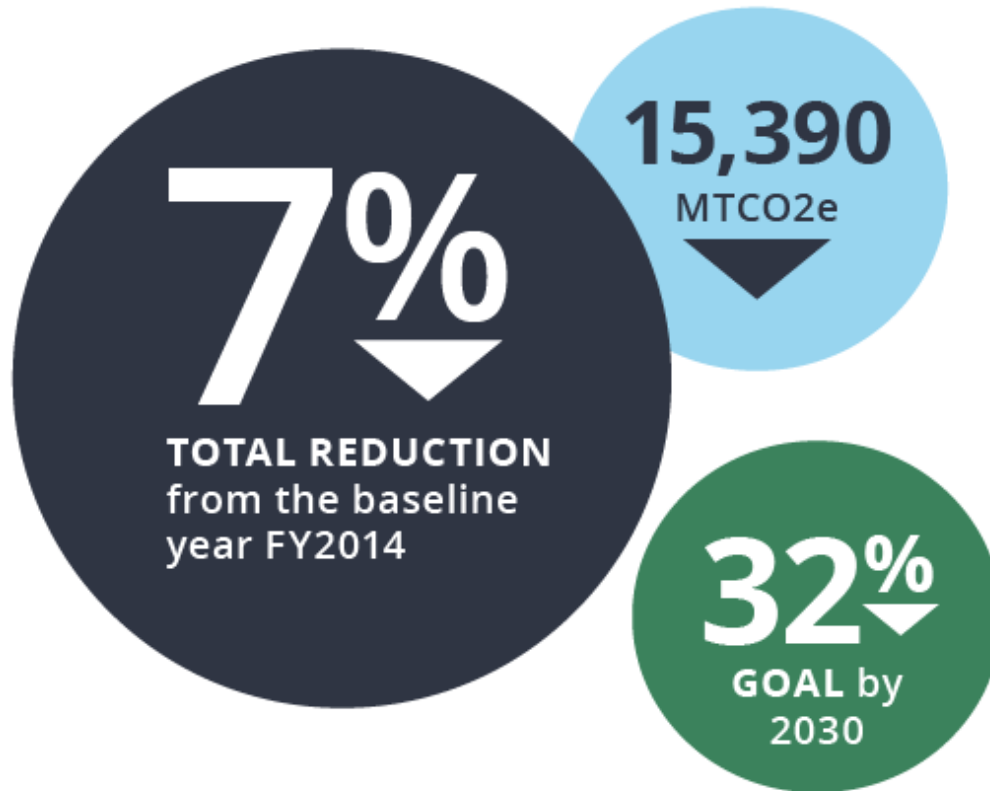




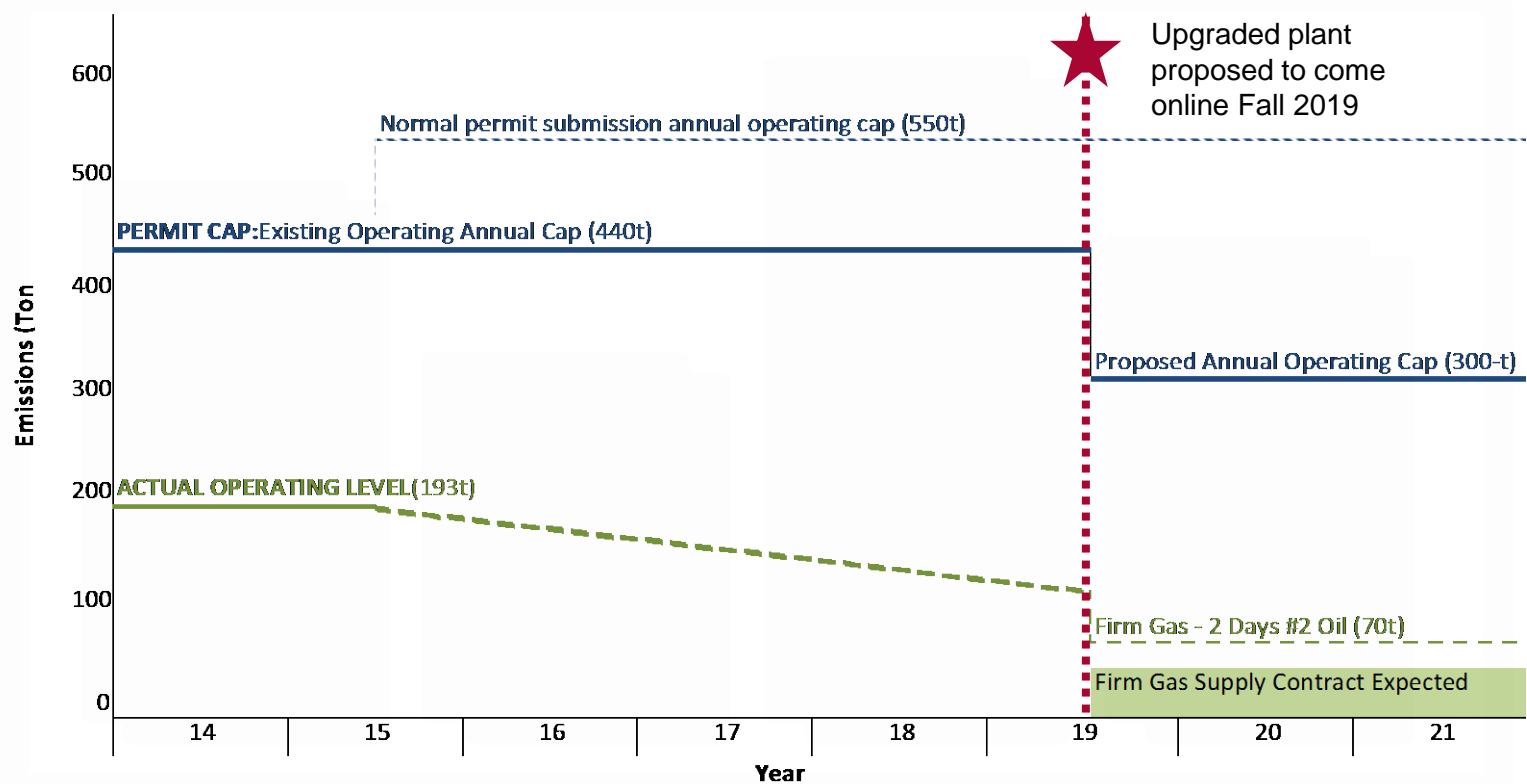
Climate and Resiliency



Progress towards MIT's Greenhouse Gas Goal



Cogeneration Emissions Projection



Previous:

Existing gas turbine
5 boilers
Interruptible gas
#2 fuel oil, #6 fuel oil

Current (interim):

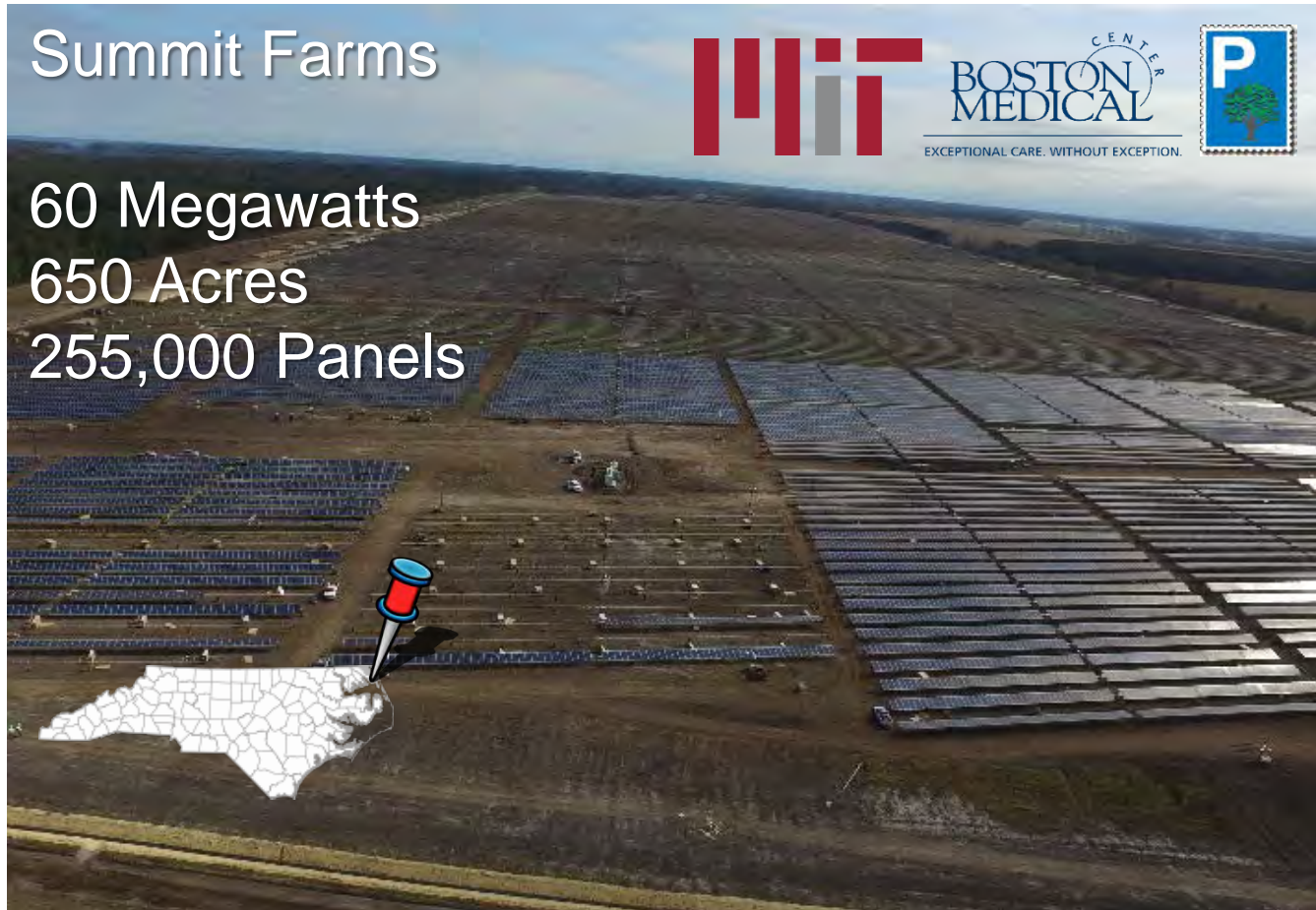
Existing gas turbine
5 boilers
Semi-firm gas
#2 fuel oil back-up
#6 fuel oil (emergency only)

Proposed project:

2 new gas turbines
5 boilers
Firm gas (primary)
#2 fuel oil for back-up only



A Partnership for Renewable Energy



Summit Farms Power Purchase Agreement

MIT Campus as a Living Lab: The Solar Test Bed



“If we use this as a vehicle to demonstrate world changing technologies that will emanate from MIT, we de-risk by example in the field, and then change the way people think about installations, reducing the costs and increasing the scale. This can change the world.”

Tonio Buonassisi

Associate Professor in mechanical engineering

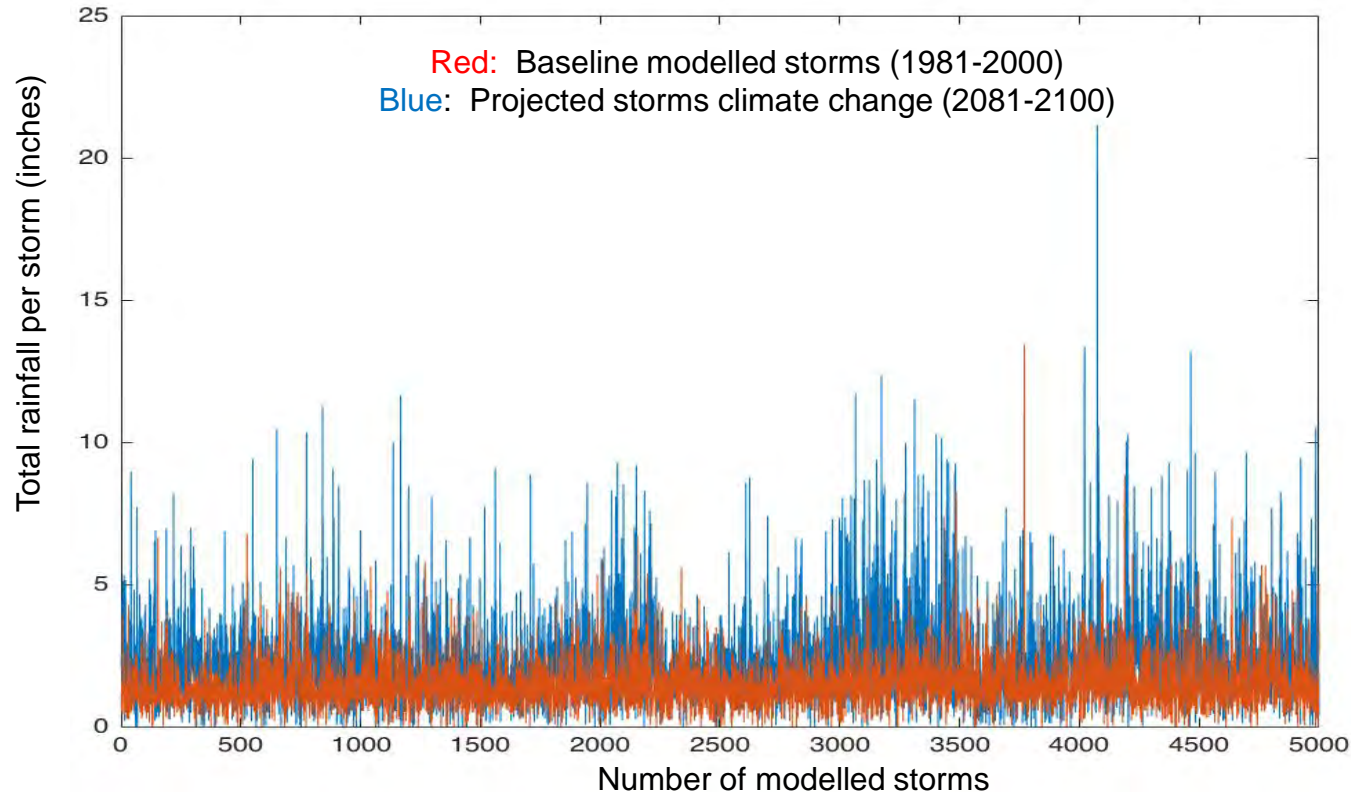


- Data analytics and accessibility
- Balance of systems – materials and costs
- Weather prediction advantages
- Capacity revenue modeling
- Economics, labor, working capital and time to deploy
- Incentive structures for operators
- Site environmental impacts – regenerative opportunities



Understanding Climate Vulnerability at MIT

Modelling of Future Cambridge Precipitation Totals (24 hour storms)



Source: Dr. Kerry Emanuel (Professor of Atmospheric Science); Dr. Ken Strzepek (Research Scientist, MIT Joint Program on Science and Policy of Global Change)





accessMIT

A broader vision that seeks to provide MIT with affordable, flexible, and low-carbon mobility choices.



Brought to you by: the MIT Parking and Transportation Office in partnership with the MIT Office of Sustainability and the MIT Transit Lab.



Jarvis Smith
Staff Accountant,
Office of the Vice President for Finance

I'm never in bumper-to-bumper mode

As a staff accountant, Jarvis Smith knew that skipping the drive to MIT didn't just make environmental sense—it makes financial sense. He loves the T ride from Ashmont Station so much, he'll likely never drive his car to work again. Now he saves time, saves money on gas, and saves himself plenty of frustration.

Your commute counts. Switch it up.
web.mit.edu/accessmit

accessMIT





Planning to Advance Education, Research, & Innovation

2030 Capital Plan

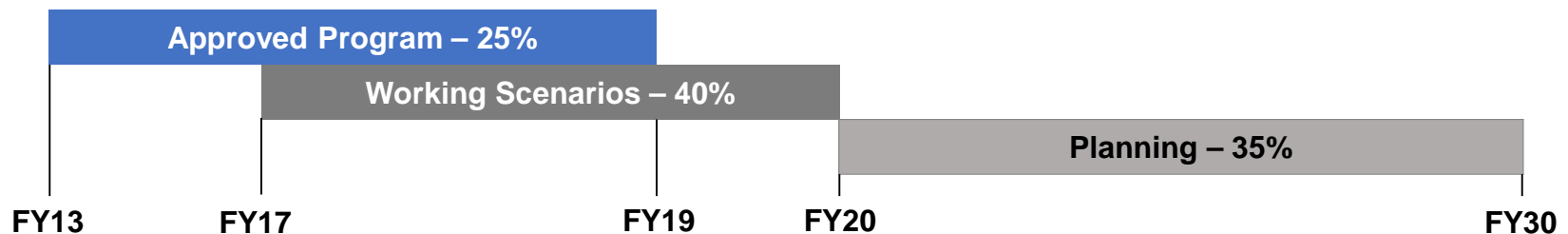
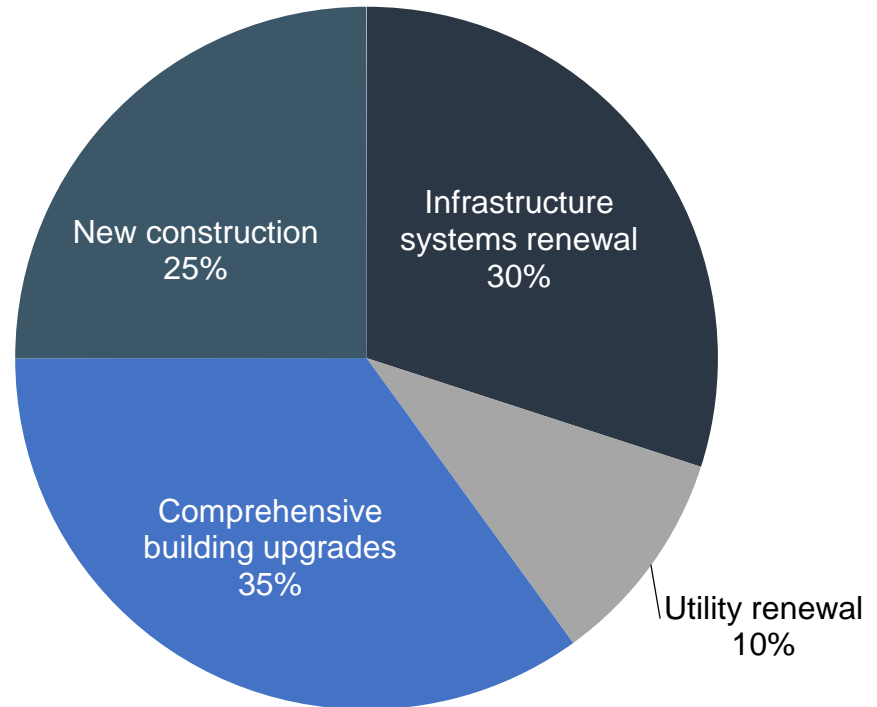
Investment priorities

- Capital Renewal
- Comprehensive Upgrade
- New Construction

Investment stream

- Academic/Research – 30%
- Student Life – 30%
- Infrastructure – 40%

Planning horizon

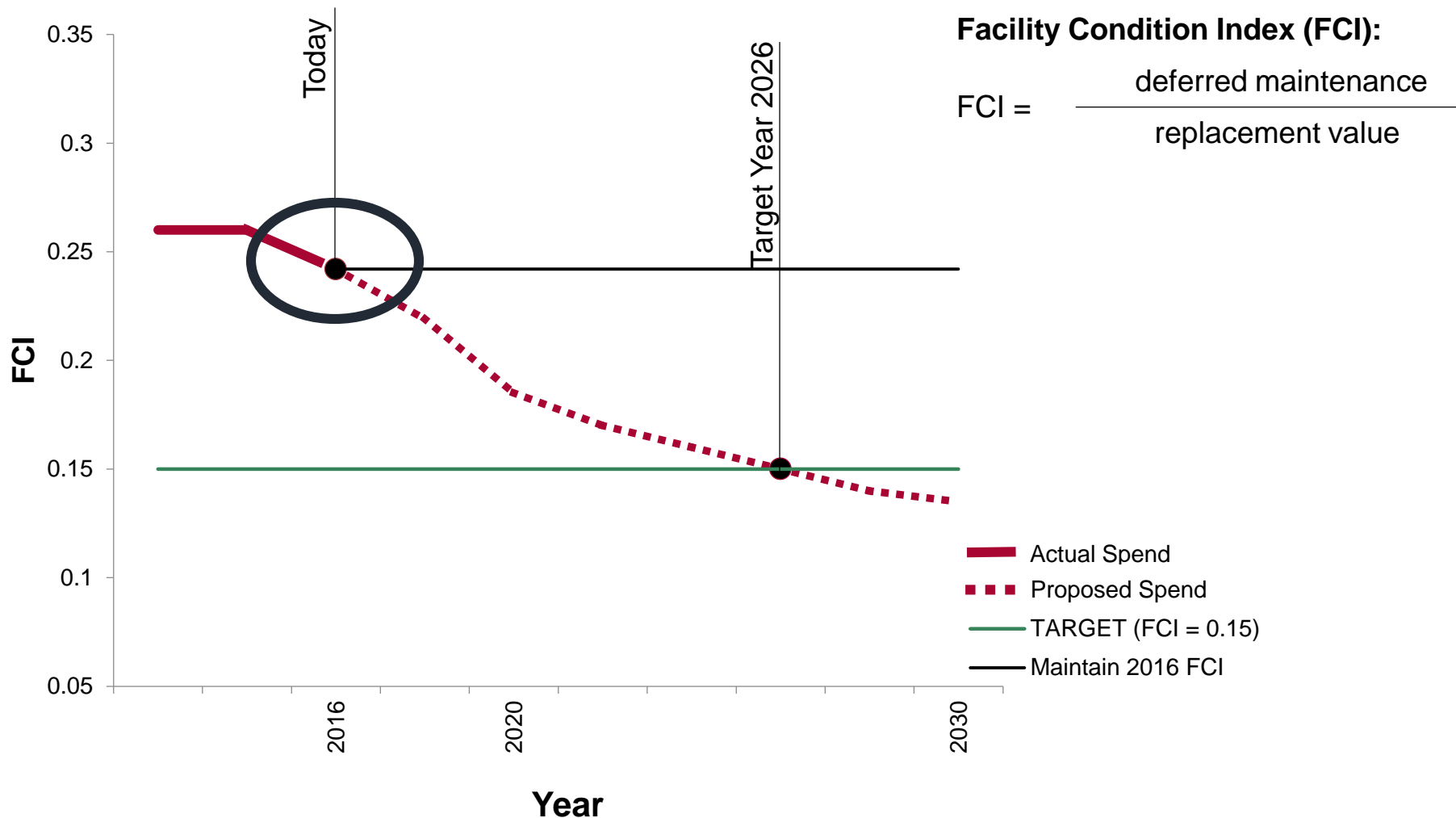




The renewal and stewardship of our physical assets on campus are critical elements of MIT's plans for the future.



Renewal and Maintenance Needs



Current Renewal Projects



AeroAstro & MechE – 70 Vassar Street



AFFOA & Sea Grant– 12 Emily Street



Theater Arts – 345 Vassar Street



Central Utility Plant – 59 Albany Street

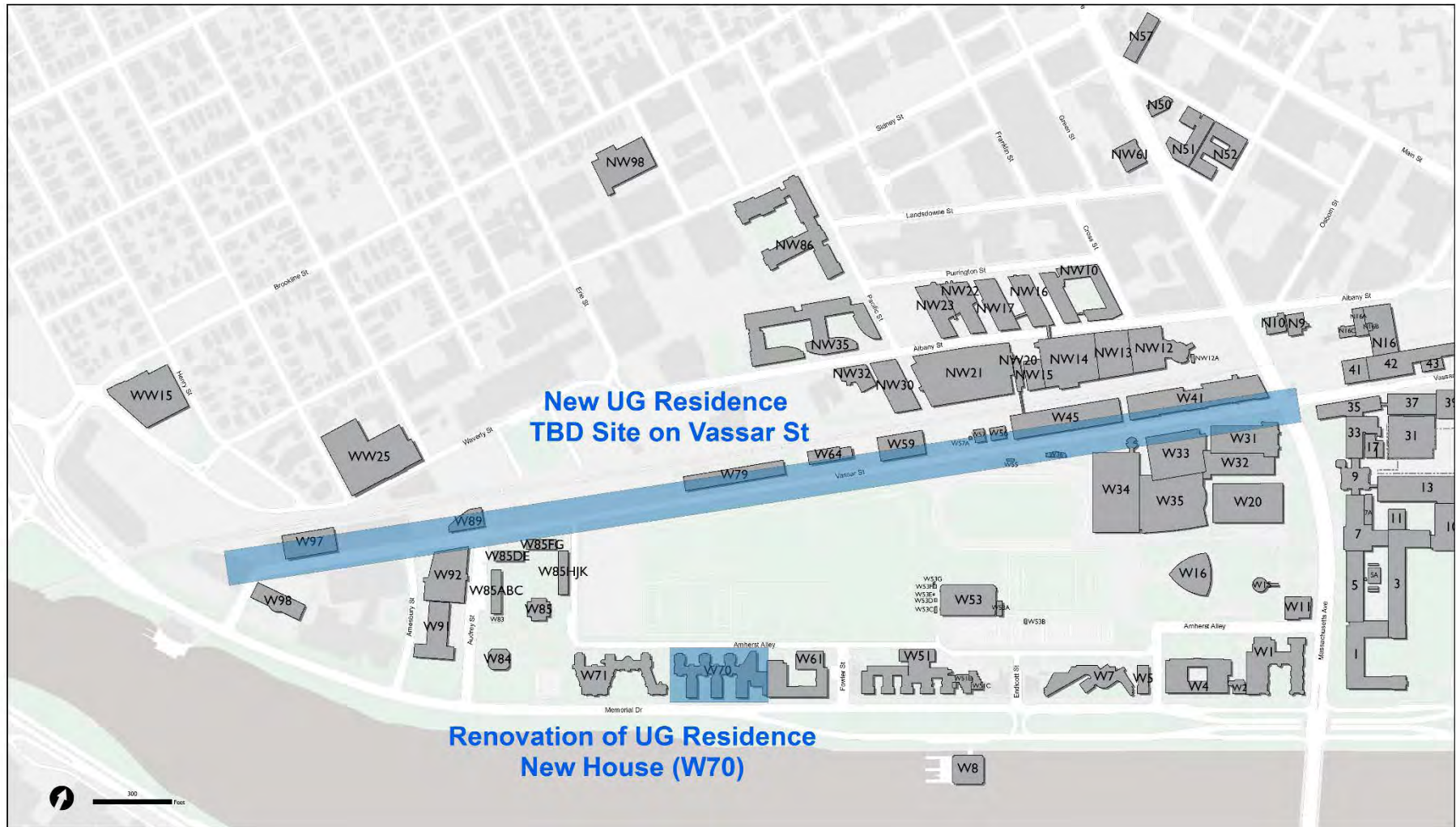
MIT.nano



Central Utility Plant Second Century Project



Undergraduate Housing: Renovation & New Construction



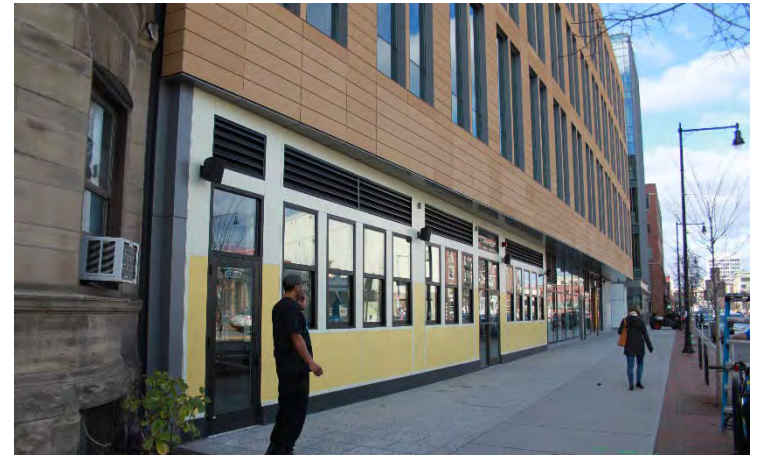
Linking Central Square to Kendall Square and MIT – decades of effort transform the streets



Enlivening Main Street and Mass Ave



MIT Press Bookstore – 301 Mass Ave



Roxy's Central/A4cade – 300 Mass Ave



Saloniki – 181 Mass Ave



Sulmona – 610 Main Street North



Make a Better World

