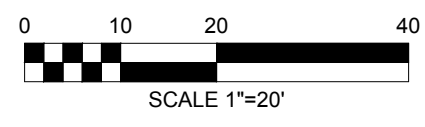


- NOTE:
- THIS SHEET IS FOR PROPOSED PAVEMENT MARKINGS ONLY. SEE E-001 THRU E-007 FOR ERADICATION PLANS. SEE FP-001 THRU FP-007 FOR PROPOSED FLEXPOST PLANS. SEE SM-001 THRU SM-007 FOR SIGNAGE AND METER PLANS.
 - INSTALL PERPENDICULAR PARKING LANE LINES AT LIMITS OF SIGNS WHERE PRESENT.
 - INSTALL PERPENDICULAR PARKING LINES ALIGNED WITH METERS WHERE PRESENT. PERPENDICULAR PARKING LINES, UNLESS SPECIFIED OTHERWISE, ARE TO BE INSTALLED HALFWAY BETWEEN TWO METERS WHERE NEEDED.
 - IF SIGNS ARE NOT PRESENT, AND UNLESS SPECIFIED OTHERWISE, INSTALL PERPENDICULAR PARKING LANE LINES:
 - 5' FROM THE PC/PT OF DRIVEWAYS AND ALLEYS
 - 10' FROM HYDRANTS
 - 20' FROM CROSSWALKS AND INTERSECTIONS



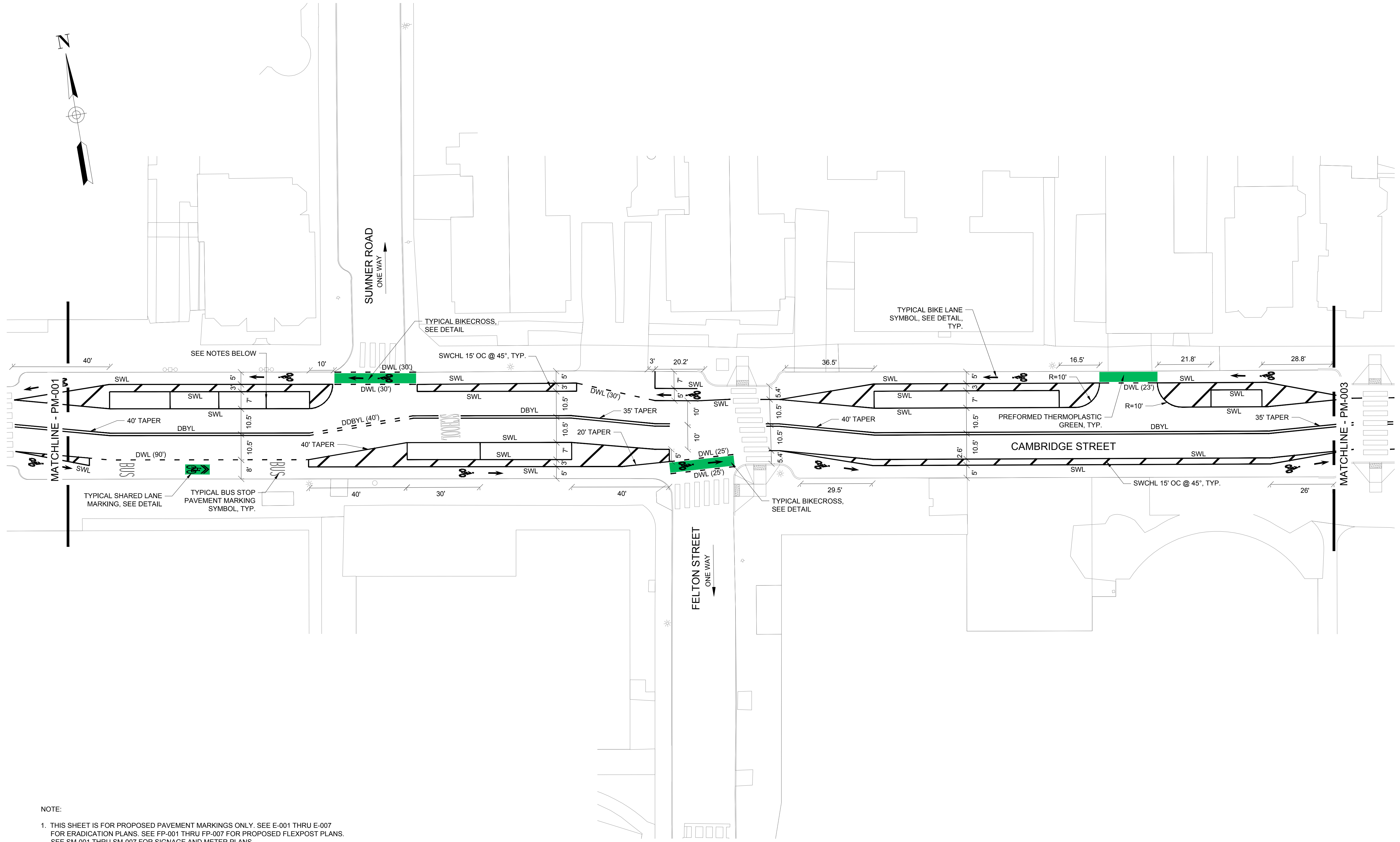
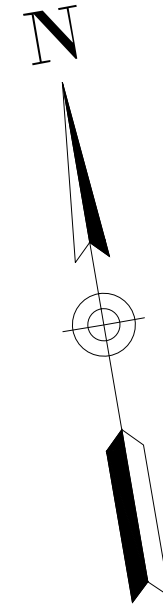
CAMBRIDGE STREET
 QUINCY STREET TO FAYETTE STREET
 CAMBRIDGE, MA



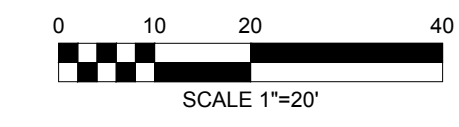
PREPARED: WH
 CHECKED: MD
 DATE
 06/30/2017

SHEET NAME
 PAVEMENT
 MARKING PLAN
 DRAWING NUMBER
PM-001

SHEET NUMBER
11 OF **32**



- NOTE:
- THIS SHEET IS FOR PROPOSED PAVEMENT MARKINGS ONLY. SEE E-001 THRU E-007 FOR ERADICATION PLANS. SEE FP-001 THRU FP-007 FOR PROPOSED FLEXPOST PLANS. SEE SM-001 THRU SM-007 FOR SIGNAGE AND METER PLANS.
 - INSTALL PERPENDICULAR PARKING LANE LINES AT LIMITS OF SIGNS WHERE PRESENT.
 - INSTALL PERPENDICULAR PARKING LINES ALIGNED WITH METERS WHERE PRESENT. PERPENDICULAR PARKING LINES, UNLESS SPECIFIED OTHERWISE, ARE TO BE INSTALLED HALFWAY BETWEEN TWO METERS WHERE NEEDED.
 - IF SIGNS ARE NOT PRESENT, AND UNLESS SPECIFIED OTHERWISE, INSTALL PERPENDICULAR PARKING LANE LINES:
 - 5' FROM THE PC/PT OF DRIVEWAYS AND ALLEYS
 - 10' FROM HYDRANTS
 - 20' FROM CROSSWALKS AND INTERSECTIONS



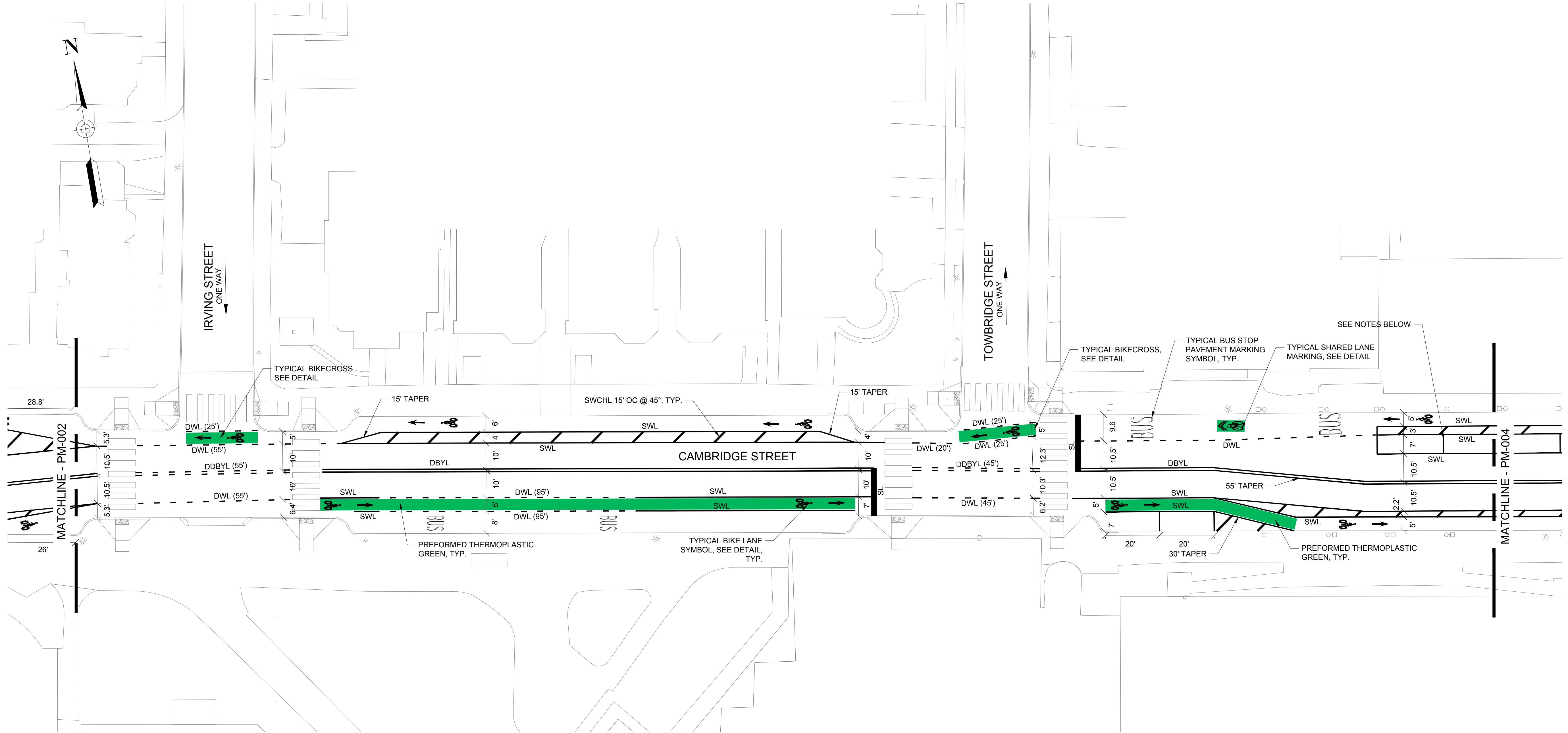
CAMBRIDGE STREET
 QUINCY STREET TO FAYETTE STREET
 CAMBRIDGE, MA



PREPARED: WH
 CHECKED: MD
 DATE
 06/30/2017

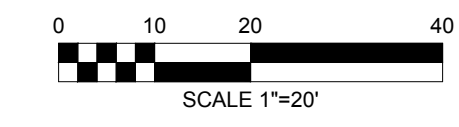
SHEET NAME
 PAVEMENT
 MARKING PLAN
 DRAWING NUMBER
PM-002

SHEET NUMBER
12 OF **32**



NOTE:

1. THIS SHEET IS FOR PROPOSED PAVEMENT MARKINGS ONLY. SEE E-001 THRU E-007 FOR ERADICATION PLANS. SEE FP-001 THRU FP-007 FOR PROPOSED FLEXPOST PLANS. SEE SM-001 THRU SM-007 FOR SIGNAGE AND METER PLANS.
2. INSTALL PERPENDICULAR PARKING LANE LINES AT LIMITS OF SIGNS WHERE PRESENT.
3. INSTALL PERPENDICULAR PARKING LINES ALIGNED WITH METERS WHERE PRESENT. PERPENDICULAR PARKING LINES, UNLESS SPECIFIED OTHERWISE, ARE TO BE INSTALLED HALFWAY BETWEEN TWO METERS WHERE NEEDED.
4. IF SIGNS ARE NOT PRESENT, AND UNLESS SPECIFIED OTHERWISE, INSTALL PERPENDICULAR PARKING LANE LINES:
 - a. 5' FROM THE PC/PT OF DRIVEWAYS AND ALLEYS
 - b. 10' FROM HYDRANTS
 - c. 20' FROM CROSSWALKS AND INTERSECTIONS



CAMBRIDGE STREET
 QUINCY STREET TO FAYETTE STREET
 CAMBRIDGE, MA

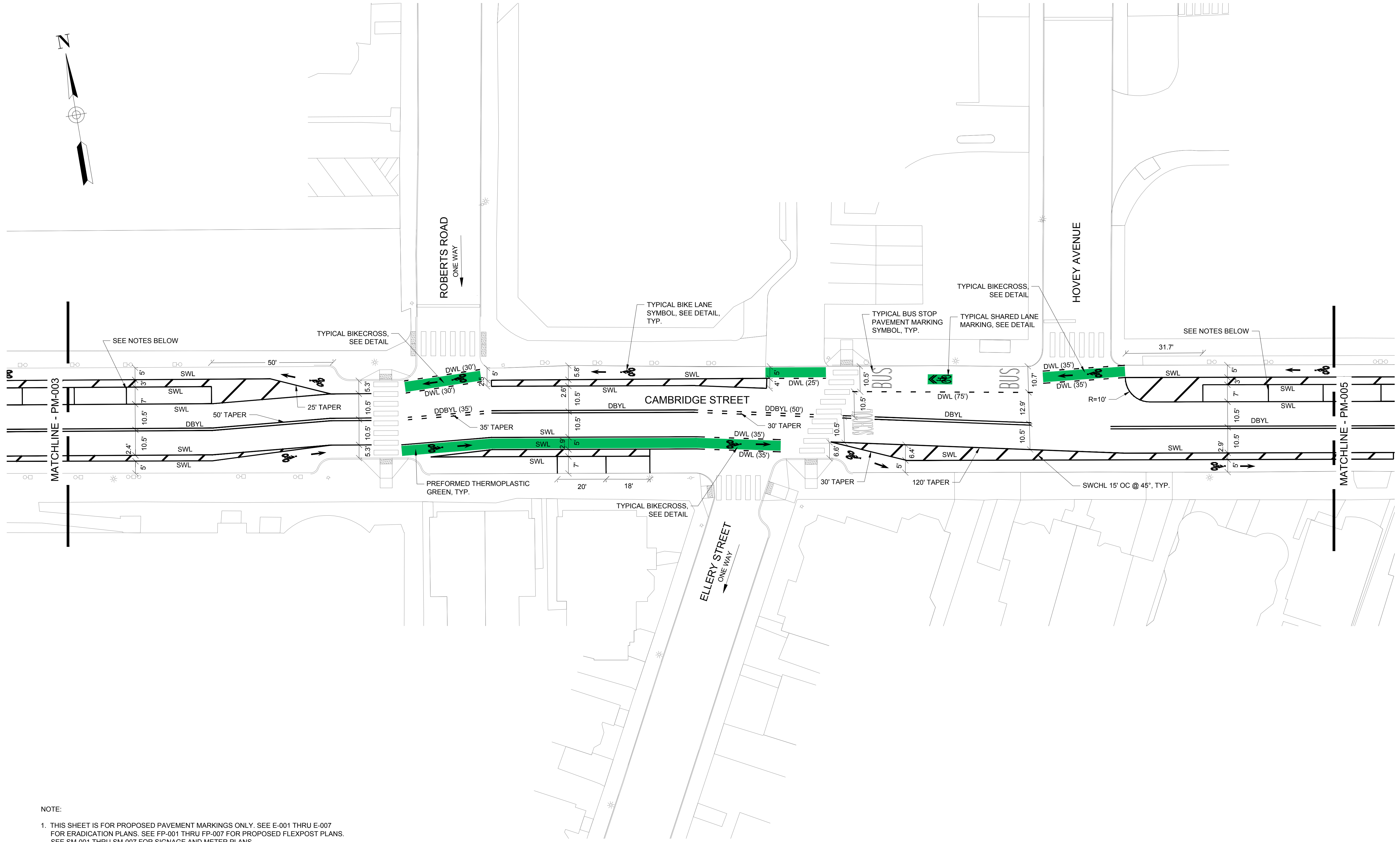
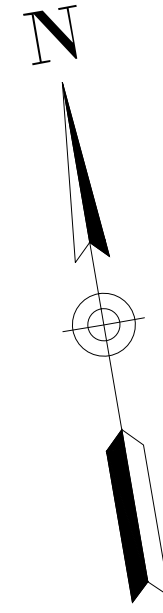


PREPARED: WH
 CHECKED: MD
 DATE
 06/30/2017

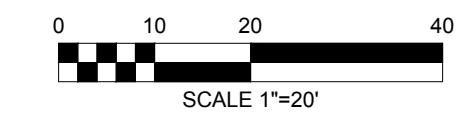
SHEET NAME
 PAVEMENT
 MARKING PLAN

DRAWING NUMBER
PM-003

SHEET NUMBER
13 OF 32



- NOTE:
- THIS SHEET IS FOR PROPOSED PAVEMENT MARKINGS ONLY. SEE E-001 THRU E-007 FOR ERADICATION PLANS. SEE FP-001 THRU FP-007 FOR PROPOSED FLEXPOST PLANS. SEE SM-001 THRU SM-007 FOR SIGNAGE AND METER PLANS.
 - INSTALL PERPENDICULAR PARKING LANE LINES AT LIMITS OF SIGNS WHERE PRESENT.
 - INSTALL PERPENDICULAR PARKING LINES ALIGNED WITH METERS WHERE PRESENT. PERPENDICULAR PARKING LINES, UNLESS SPECIFIED OTHERWISE, ARE TO BE INSTALLED HALFWAY BETWEEN TWO METERS WHERE NEEDED.
 - IF SIGNS ARE NOT PRESENT, AND UNLESS SPECIFIED OTHERWISE, INSTALL PERPENDICULAR PARKING LANE LINES:
 - 5' FROM THE PC/PT OF DRIVEWAYS AND ALLEYS
 - 10' FROM HYDRANTS
 - 20' FROM CROSSWALKS AND INTERSECTIONS



CAMBRIDGE STREET
 QUINCY STREET TO FAYETTE STREET
 CAMBRIDGE, MA

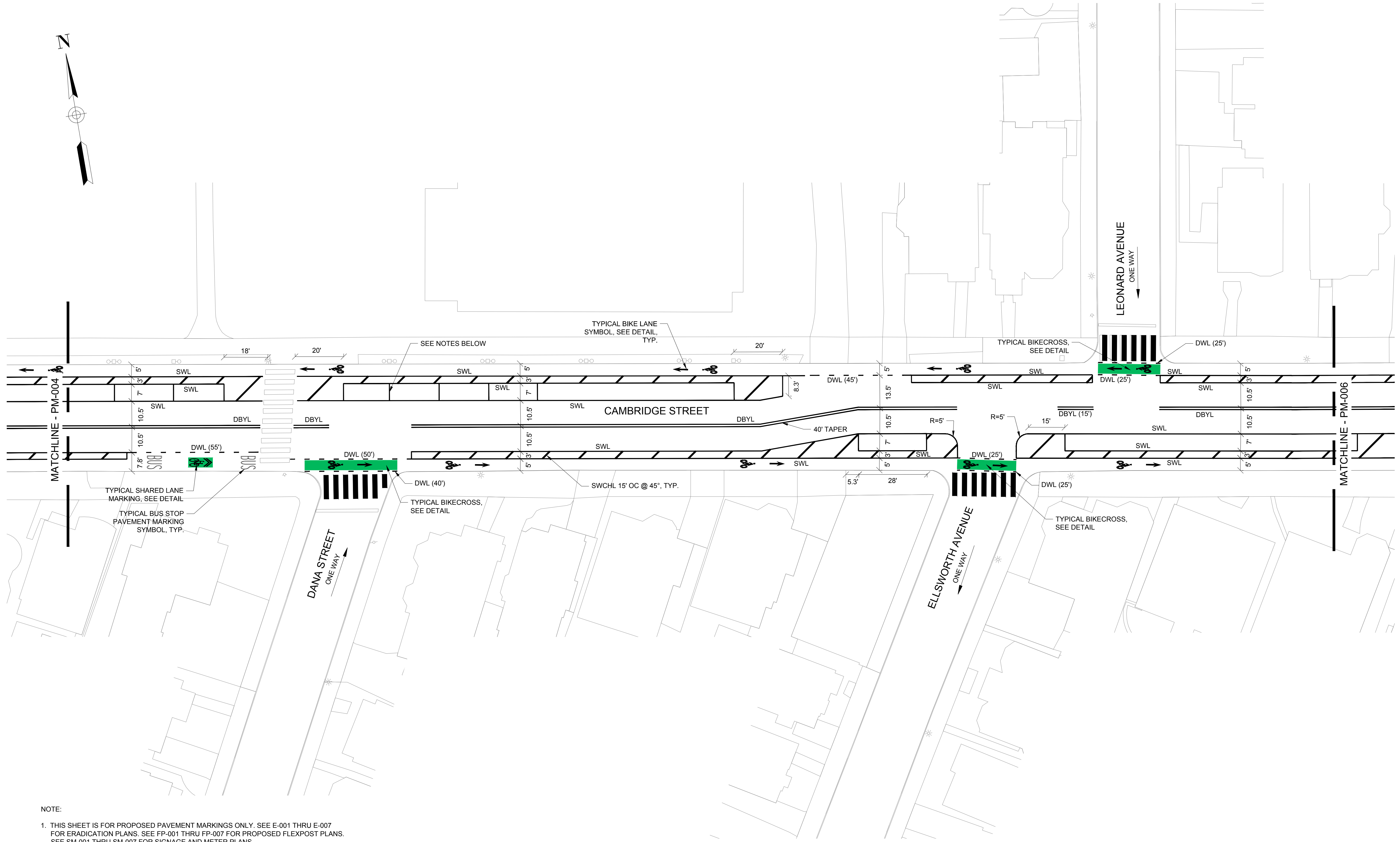
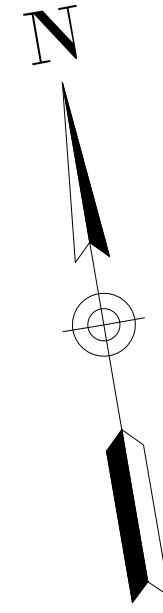


PREPARED: WH
 CHECKED: MD
 DATE
 06/30/2017

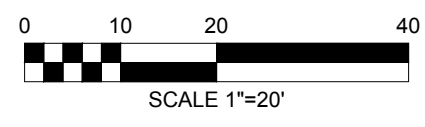
SHEET NAME
 PAVEMENT
 MARKING PLAN

DRAWING NUMBER
PM-004

SHEET NUMBER
14 OF **32**



- NOTE:
- THIS SHEET IS FOR PROPOSED PAVEMENT MARKINGS ONLY. SEE E-001 THRU E-007 FOR ERADICATION PLANS. SEE FP-001 THRU FP-007 FOR PROPOSED FLEXPOST PLANS. SEE SM-001 THRU SM-007 FOR SIGNAGE AND METER PLANS.
 - INSTALL PERPENDICULAR PARKING LANE LINES AT LIMITS OF SIGNS WHERE PRESENT.
 - INSTALL PERPENDICULAR PARKING LINES ALIGNED WITH METERS WHERE PRESENT. PERPENDICULAR PARKING LINES, UNLESS SPECIFIED OTHERWISE, ARE TO BE INSTALLED HALFWAY BETWEEN TWO METERS WHERE NEEDED.
 - IF SIGNS ARE NOT PRESENT, AND UNLESS SPECIFIED OTHERWISE, INSTALL PERPENDICULAR PARKING LANE LINES:
 - 5' FROM THE PC/PT OF DRIVEWAYS AND ALLEYS
 - 10' FROM HYDRANTS
 - 20' FROM CROSSWALKS AND INTERSECTIONS



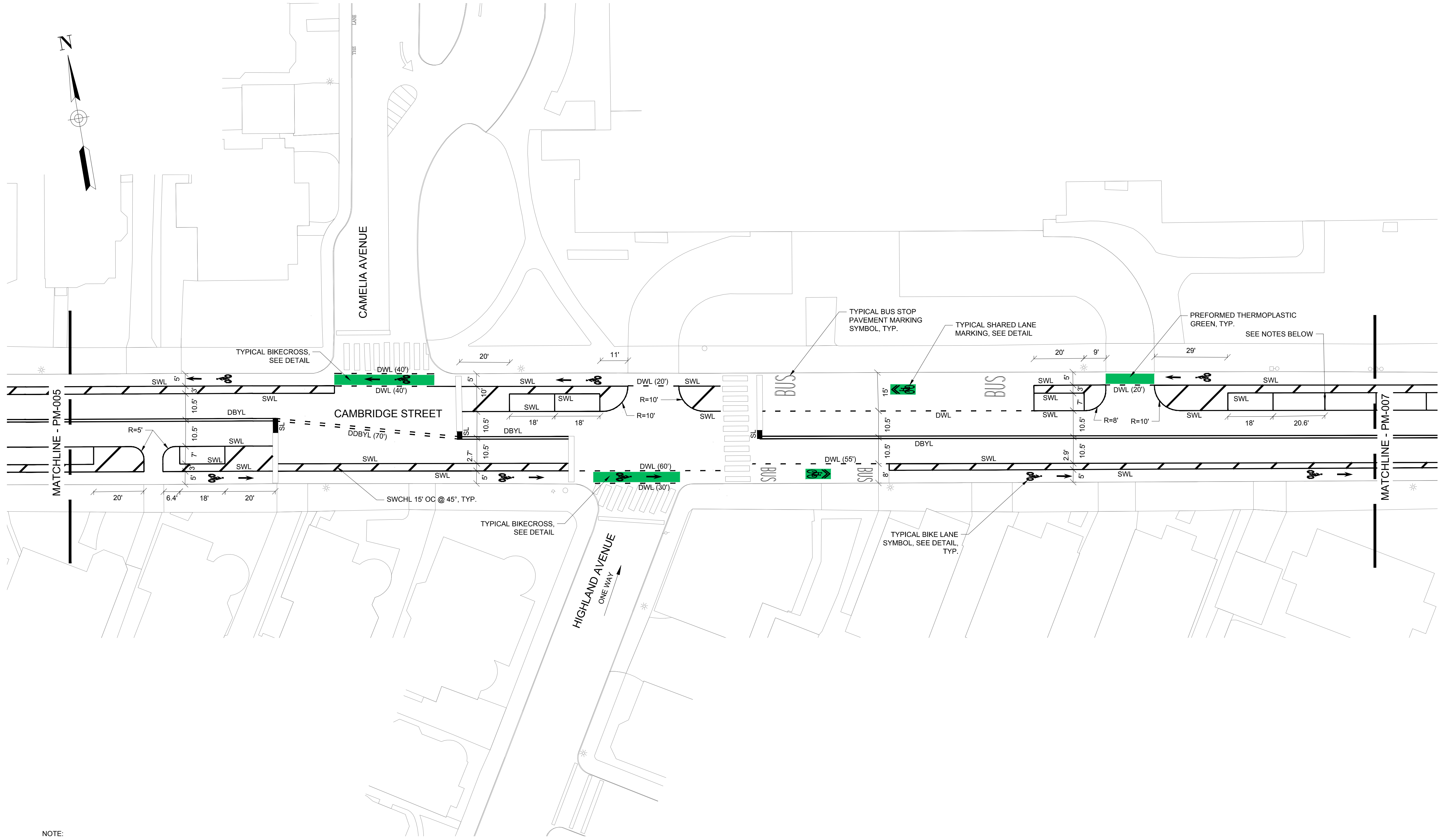
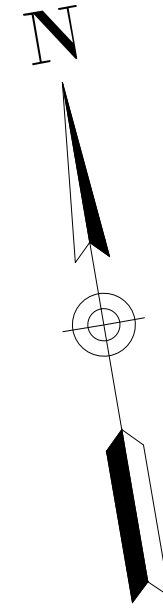
CAMBRIDGE STREET
 QUINCY STREET TO FAYETTE STREET
 CAMBRIDGE, MA



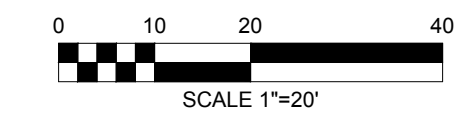
PREPARED: WH
 CHECKED: MD
 DATE
 06/30/2017

SHEET NAME
 PAVEMENT
 MARKING PLAN
 DRAWING NUMBER
PM-005

SHEET NUMBER
15 OF **32**



- NOTE:
- THIS SHEET IS FOR PROPOSED PAVEMENT MARKINGS ONLY. SEE E-001 THRU E-007 FOR ERADICATION PLANS. SEE FP-001 THRU FP-007 FOR PROPOSED FLEXPOST PLANS. SEE SM-001 THRU SM-007 FOR SIGNAGE AND METER PLANS.
 - INSTALL PERPENDICULAR PARKING LANE LINES AT LIMITS OF SIGNS WHERE PRESENT.
 - INSTALL PERPENDICULAR PARKING LINES ALIGNED WITH METERS WHERE PRESENT. PERPENDICULAR PARKING LINES, UNLESS SPECIFIED OTHERWISE, ARE TO BE INSTALLED HALFWAY BETWEEN TWO METERS WHERE NEEDED.
 - IF SIGNS ARE NOT PRESENT, AND UNLESS SPECIFIED OTHERWISE, INSTALL PERPENDICULAR PARKING LANE LINES:
 - 5' FROM THE PC/PT OF DRIVEWAYS AND ALLEYS
 - 10' FROM HYDRANTS
 - 20' FROM CROSSWALKS AND INTERSECTIONS



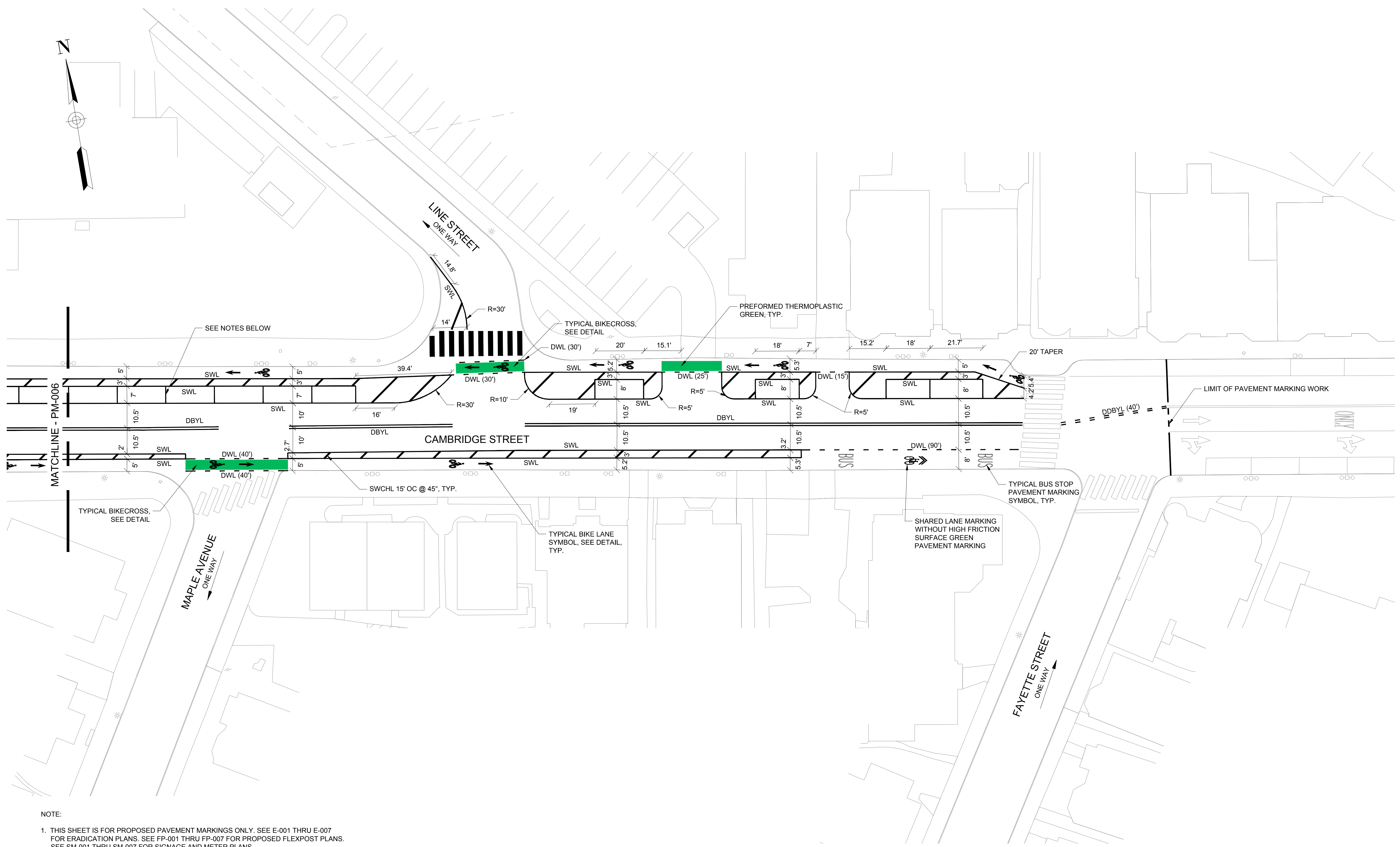
CAMBRIDGE STREET
 QUINCY STREET TO FAYETTE STREET
 CAMBRIDGE, MA



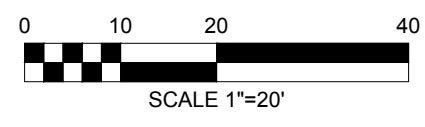
PREPARED: WH
 CHECKED: MD
 DATE
 06/30/2017

SHEET NAME
 PAVEMENT
 MARKING PLAN
 DRAWING NUMBER
PM-006

SHEET NUMBER
16 OF **32**



- NOTE:
- THIS SHEET IS FOR PROPOSED PAVEMENT MARKINGS ONLY. SEE E-001 THRU E-007 FOR ERADICATION PLANS. SEE FP-001 THRU FP-007 FOR PROPOSED FLEXPOST PLANS. SEE SM-001 THRU SM-007 FOR SIGNAGE AND METER PLANS.
 - INSTALL PERPENDICULAR PARKING LANE LINES AT LIMITS OF SIGNS WHERE PRESENT.
 - INSTALL PERPENDICULAR PARKING LINES ALIGNED WITH METERS WHERE PRESENT. PERPENDICULAR PARKING LINES, UNLESS SPECIFIED OTHERWISE, ARE TO BE INSTALLED HALFWAY BETWEEN TWO METERS WHERE NEEDED.
 - IF SIGNS ARE NOT PRESENT, AND UNLESS SPECIFIED OTHERWISE, INSTALL PERPENDICULAR PARKING LANE LINES:
 - 5' FROM THE PC/PT OF DRIVEWAYS AND ALLEYS
 - 10' FROM HYDRANTS
 - 20' FROM CROSSWALKS AND INTERSECTIONS



CAMBRIDGE STREET
 QUINCY STREET TO FAYETTE STREET
 CAMBRIDGE, MA



PREPARED: WH
 CHECKED: MD
 DATE
 06/30/2017

SHEET NAME
 PAVEMENT
 MARKING PLAN

DRAWING NUMBER
PM-007

SHEET NUMBER
17 OF 32