



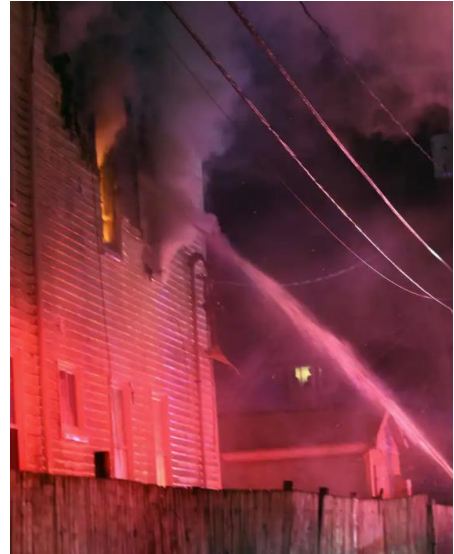
Training Bulletin

ISSUED 2/28/2023
TB 2023-09

Brockton FD transitional attack and ground ladder tip positioning allows for 5 occupants to be rescued over ground ladders & 2 occupants to be rescued from the interior!



Transitional attack - 1st due Engine operates 2-1/2 hand line from the exterior to knock down the heavy fire auto extending to floor 3 and cockloft.



The 4 S's

Solid or straight stream	Steady
Steep	Sprinkler



VEIS – If tip was above the sill, the FF & occupants would not have enough space to enter & exit. Photo & prior photo by Marc Vasconcellos/The Enterprise



All tips at or slightly below the sill on all sides and floors! **Perfect Laddering!**

Submit a potential Training Bulletin topic via email to: Training@cambridgefire.org