

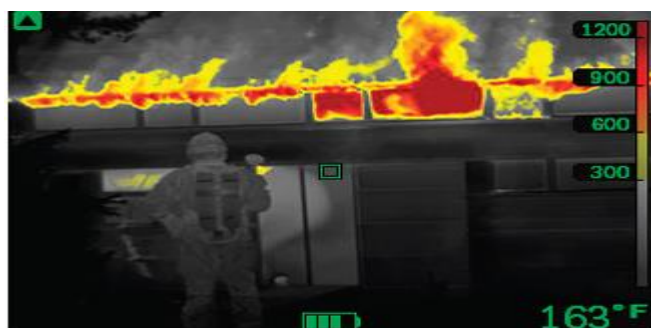


# Training Bulletin

ISSUED 6/27/2023.  
TB 2023-27

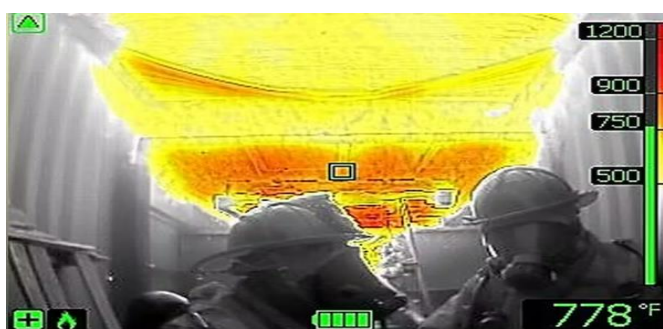
## FLIR Thermal Imaging Mode Interpretation

### Basic Mode



**Basic Mode:** The camera's default mode, is designed for the initial fire attack with life-saving operations and fire control. It automatically switches between the high-sensitivity and low-sensitivity ranges to maintain an optimal infrared image while ensuring a consistent heat colorization of the fire scene. It has an automatic range and colorization of heat ranging from +150 to +650°C (+302 to +1202°F) in the high-sensitivity range, and -20 to +150°C (-4 to +302°F) in the low-sensitivity range.

### Fire Mode



**Fire Mode:** Like Basic Mode but with a higher temperature starting point for heat colorization. It is suitable for fire scenes with higher background temperatures and open flames. The camera automatically switches between the high and low-sensitivity ranges, maintaining an optimal infrared image while ensuring a safe and consistent heat colorization. It has an automatic range and colorization of heat ranging from +250 to +650°C (+482 to +1202°F) in the high-sensitivity range, the same as Basic Mode.

Submit a potential Training Bulletin topic via email to: [Training@cambridgefire.org](mailto:Training@cambridgefire.org)