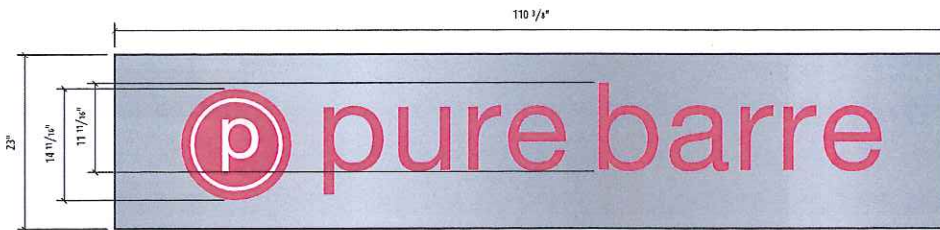


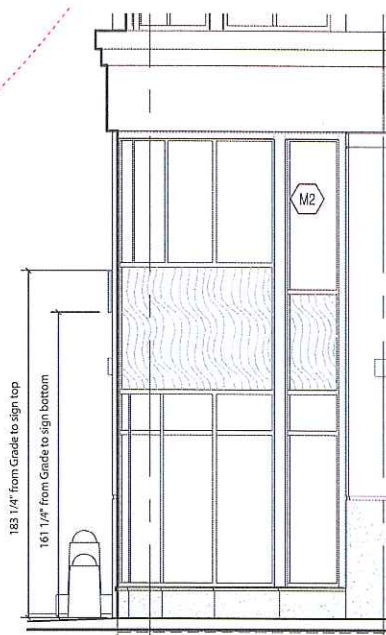
Top View



Layout View (Option B) Qty: 1



1/8" (t) flat cut aluminum panel, painted MAP Brushed Aluminum
 Graphics to be surface applied Matte White & Cardinal Red (220-53) vinyl



Sign Type Y.1

Primary Building ID (Option B)

Specifications
 ASI Series: Custom
 Size: 22" (h) x 105 5/8" (w) x 1/8" (t)
 Mounting: Mechanical mount flush onto curved building exterior

Note(s):
 - Non-Illuminated
 - Sign panel to be bent & formed on site to wrap around curved facade of building

17.63 sq/ft
 (Maximum Allowed 19.27 total sq/ft)

Client: Pure Barre
 Project: Exterior Signage
 Location: Cambridge, MA
 Keyword(s): Primary, Building ID, Entrance

Scale: 1/16" = 1" (Layout), 3/16" = 1" (Elevation)
 Date: 06.14.17
 Drawn By: BMV
 Sales / PM: DS / MH
 File Name: 2_PB-CambridgeMA_Ext_Y.1_05.17

DRAWING REVISIONS
 Rv1: 06.20.17 Rv2: 06.27.17 Rv3: *
 Rv4: * Rv5: * Rv6: *

DESIGN STATUS: APPROVED
 Approved As Noted
 DATE: Revise & Resubmit

SIGN: _____
 Tel 612.332.1223 Fax 612.332.1224

asi Minneapolis, Minnesota
 Milwaukee, Wisconsin
 Seattle, Washington
 Portland, Oregon
 Signage Innovations™ asisignage.com

SHEET 2

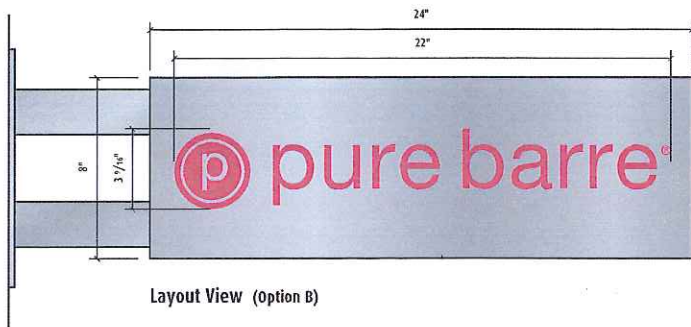
These drawings are the confidential proprietary works of ASI and its design, manufacturing and production, and all other rights are reserved. These drawings are submitted under a non-disclosure agreement for a specific purpose to the recipient. By accepting this document, all parties agree to keep this document confidential and not to copy or reproduce it in whole or in part, or its contents, in any form or by any means, except as may be required in writing by the recipient. ASI and its design, manufacturing and production are not to be used in any other project without the express written consent of ASI.



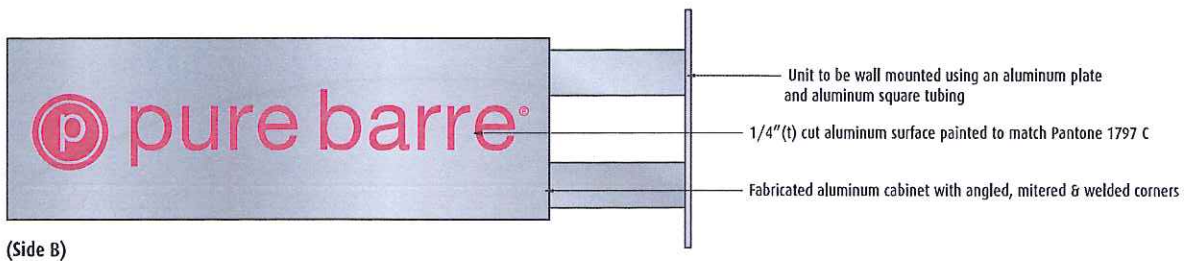
Site View (Rendering)



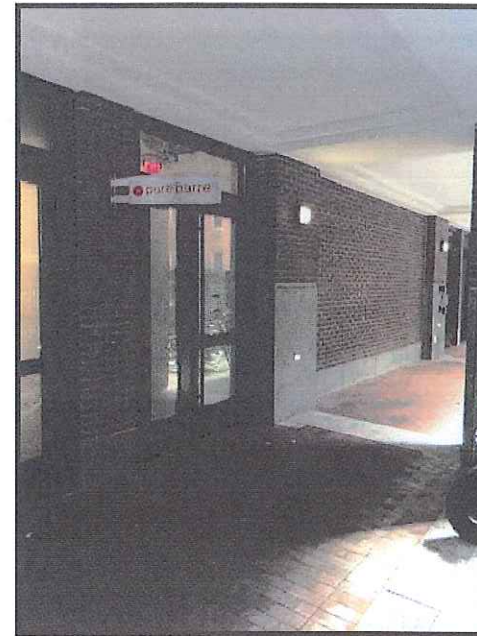
Overhead View



Layout View (Option B)



(Side B)



Site View (Rendering)

Sign Type H.3

Exterior Flag ID (Option B)
Flag ID Non-Illuminated

Specifications
ASI Series: Custom
Size: 8"(h) x 24"(w)
Mounting:
Sign to be mechanically mounted, exact specifications vary per location

Note(s):
1.33 sq/ft

Client: Pure Barre
Project: Exterior Signage
Location: Cambridge, MA
Keyword(s): Primary, Building ID, Entrance

Scale: 3/16" = 1"
Date: 06.14.17
Drawn By: BMV
Sales / PM: DS / MH
File Name:
3_PB-CambridgeMA_Ext_H.3_05.17

DRAWING REVISIONS

Rv1: 06.20.17	Rv2: "	Rv3: "
Rv4: "	Rv5: "	Rv6: "

DESIGN STATUS: APPROVED
 Approved As Noted
 Revise & Resubmit

DATE: _____
SIGN: _____

Tel 612.332.1223 Fax 612.332.1224

asi
Signage Innovations™
ashipage.com

Minneapolis, Minnesota
Milwaukee, Wisconsin
Seattle, Washington
Portland, Oregon

These drawings include the Author's proprietary rights of design, manufacturing, reproduction, use in the field regarding the work are hereby reserved. These drawings are submitted under a non-disclosure agreement for the project and the recipient, by accepting this document, assumes complete responsibility for the document will not be copied or reproduced in whole or in part, nor its contents made in any manner to any person except to meet the purpose for which it was drawn or to be used. That any special features peculiar to this design will not be incorporated in other projects.