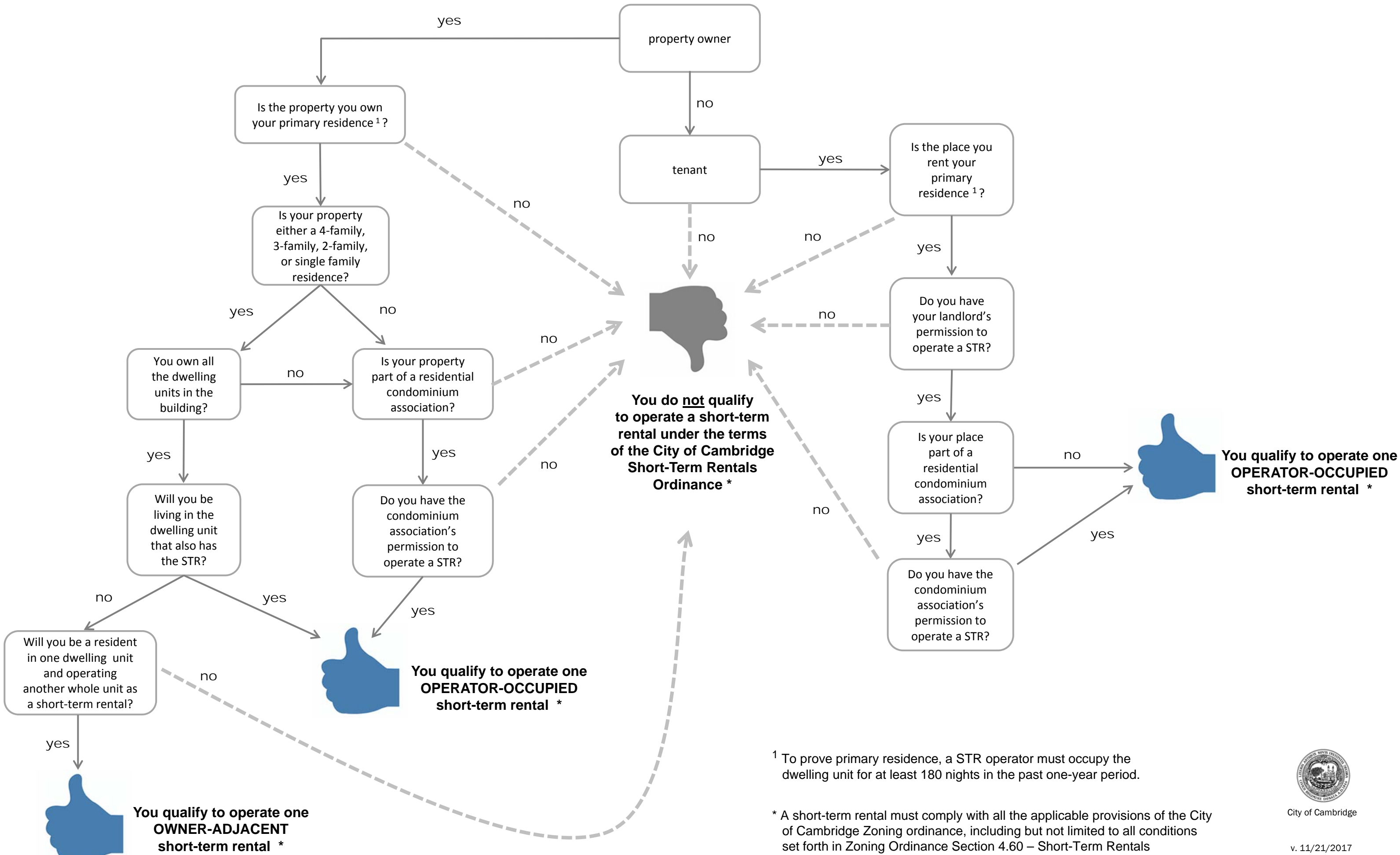


Short-Term Rental (STR) Decision Tree



¹ To prove primary residence, a STR operator must occupy the dwelling unit for at least 180 nights in the past one-year period.

* A short-term rental must comply with all the applicable provisions of the City of Cambridge Zoning ordinance, including but not limited to all conditions set forth in Zoning Ordinance Section 4.60 – Short-Term Rentals

