



2014 Town Gown Report

City of Cambridge | Planning Board Presentation

February 3, 2015

Planning & Development Priorities



Supporting Academic Programs and Research

Planning & Development Priorities



Housing Harvard's Affiliates

Planning & Development Priorities



Enhancing the Campus Experience

Planning & Development Priorities



Promoting Campus-wide Sustainability

Planning & Development Priorities

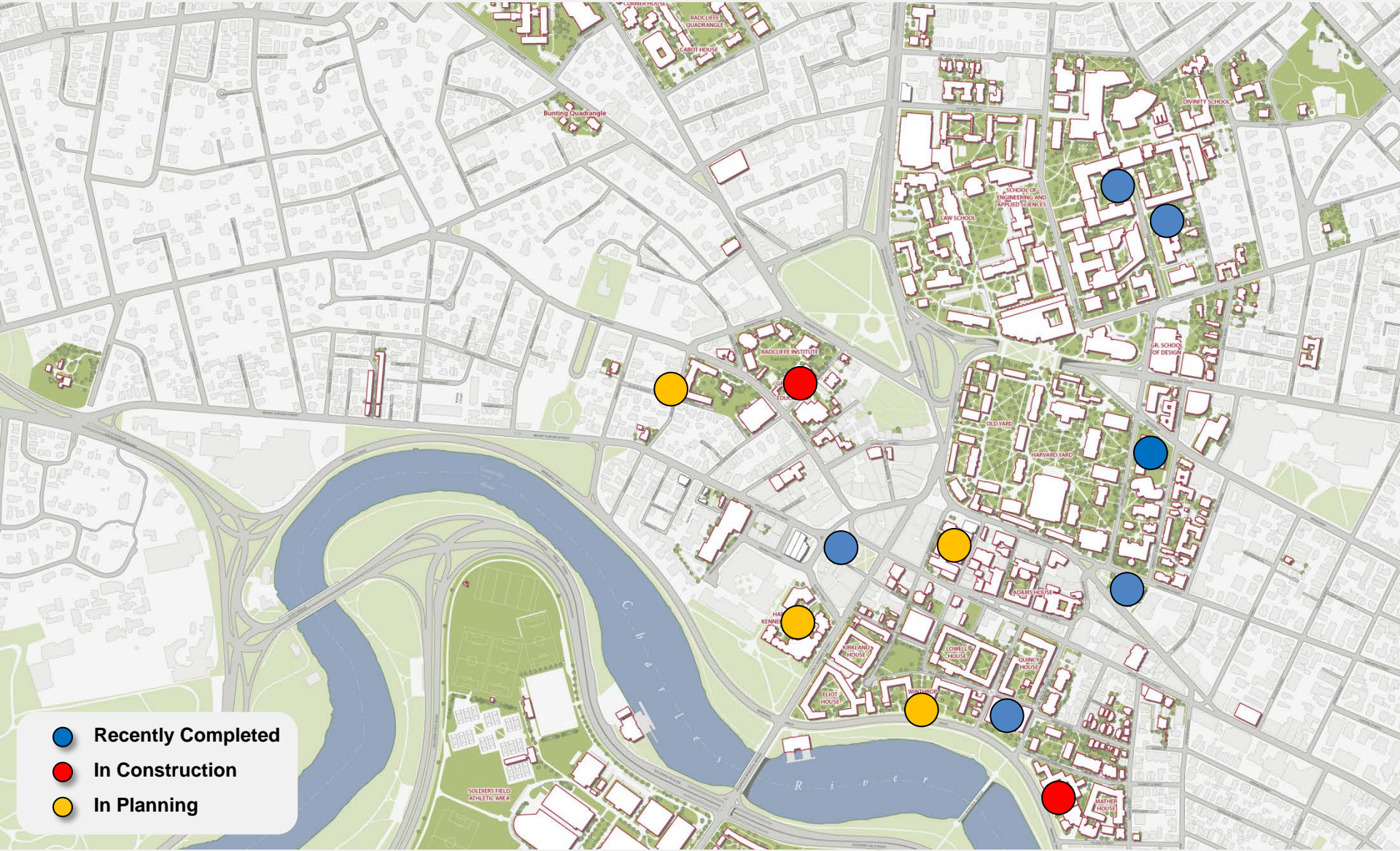


Improving Campus Infrastructure



Current Projects

Current Projects in Cambridge



- Recently Completed
- In Construction
- In Planning

McKinlock Hall – House Renewal

Recently Completed

Harvard College



McKinlock Hall – *House Renewal*

Recently Completed

Harvard College



Comprehensive renewal of undergraduate House · *Kieran Timberlake*

McKinlock Hall – House Renewal

Recently Completed

Harvard College



Comprehensive renewal of undergraduate House · *Kieran Timberlake*

McKinlock Hall – House Renewal

Recently Completed

Harvard College



Comprehensive renewal of undergraduate House · *Kieran Timberlake*

Dunster House – House Renewal

In Construction

Harvard College



Dunster House – *House Renewal*

In Construction

Harvard College



Comprehensive renewal of undergraduate House · *Kieran Timberlake*

Winthrop House – House Renewal

In Planning

Harvard College



Winthrop House – House Renewal

In Planning

Harvard College



Comprehensive renewal of undergraduate House • *Beyer Blinder Belle*

Winthrop House – House Renewal

In Planning

Harvard College



Comprehensive renewal of undergraduate House • *Beyer Blinder Belle*

1201 Massachusetts Avenue – House Renewal

Recently Completed

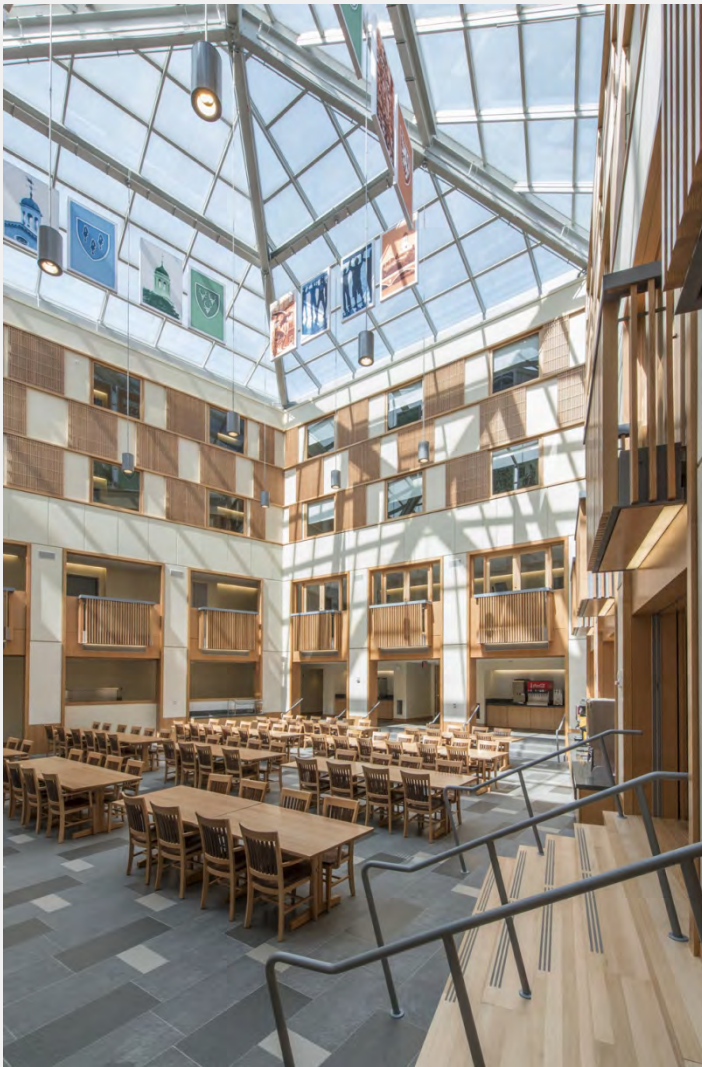
Harvard College



1201 Massachusetts Avenue – House Renewal

Recently Completed

Harvard College



Renovation for use as “swing housing” · *Beyer Blinder Belle*

Harvard College



Renovation for use as “swing housing” · *Beyer Blinder Belle*

Campus Development

In Planning

Harvard Kennedy School



Campus Development

In Planning

Harvard Kennedy School



Construction of new academic space • *Robert A.M. Stern Architects*

Harvard Kennedy School



Construction of new academic space · *Robert A.M. Stern Architects*

Hutchins Center / The Cooper Gallery

Recently Completed

Faculty of Arts and Sciences



Hutchins Center / The Cooper Gallery

Recently Completed

Faculty of Arts and Sciences



Photo credit: Dean Kaufman

Renovation of space for a new academic center and gallery · *Adjaye Associates*

Richard A. and Susan F. Smith Campus Center

In Planning

Harvard Campus Services



Richard A. and Susan F. Smith Campus Center

In Planning

Harvard Campus Services



Creation of a campus center · Hopkins Architects

Richard A. and Susan F. Smith Campus Center

In Planning

Harvard Campus Services



Creation of a campus center · Hopkins Architects

32 Quincy Street

Recently Completed

Harvard Art Museums



Harvard Art Museums



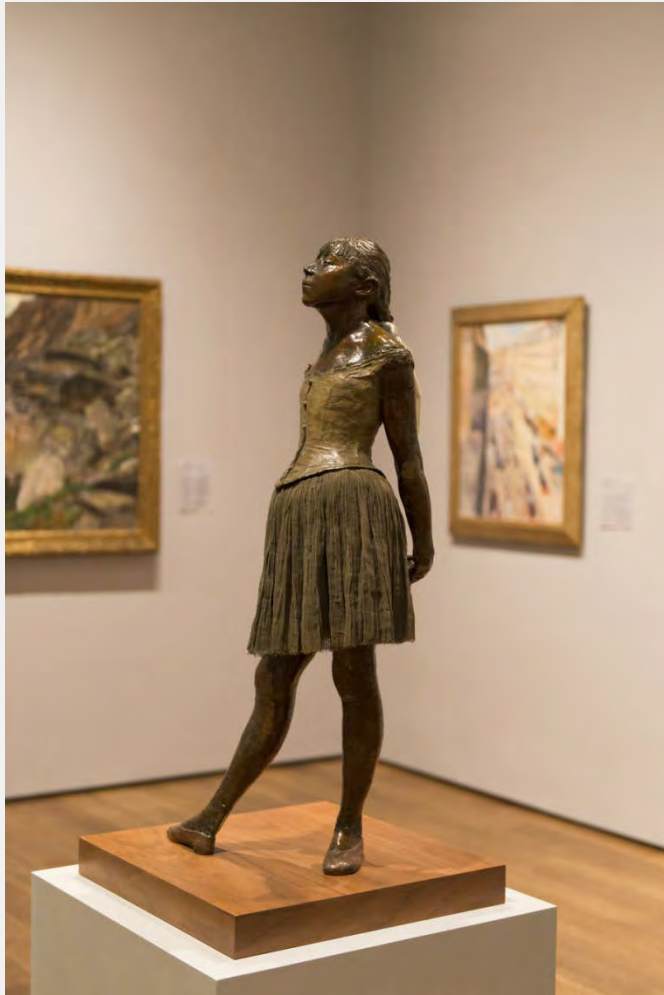
Substantial renovation and expansion for Harvard Art Museums · *Renzo Piano Building Workshop*

Harvard Art Museums



Substantial renovation and expansion for Harvard Art Museums · *Renzo Piano Building Workshop*

Harvard Art Museums



Substantial renovation and expansion for Harvard Art Museums · *Renzo Piano Building Workshop*

Harvard Art Museums



Substantial renovation and expansion for Harvard Art Museums · *Renzo Piano Building Workshop*

Harvard Art Museums



Substantial renovation and expansion for Harvard Art Museums · *Renzo Piano Building Workshop*

9 Ash Street

In Planning

Harvard Graduate School of Design



9 Ash Street

In Planning

Harvard Graduate School of Design



Restoration of historic house • *Thomas Pfifer and Partners*

Longfellow Hall

In Construction

Harvard Graduate School of Education



Longfellow Hall

In Construction

Harvard Graduate School of Education

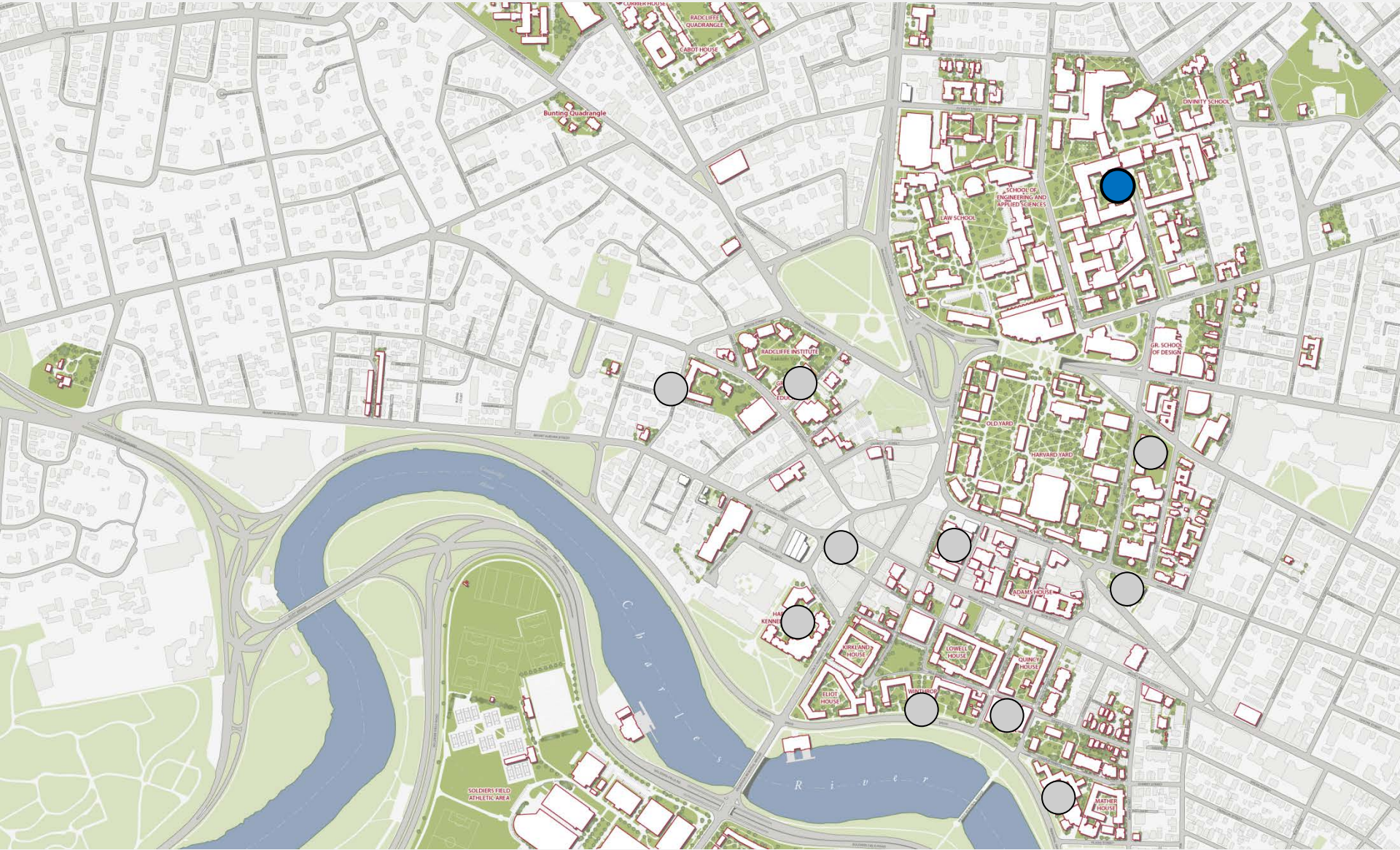


Partial renovation and addition • *Baker Design Group*

Tozzer Anthropology Building

Recently Completed

Faculty of Arts and Sciences



Tozzer Anthropology Building

Recently Completed

Faculty of Arts and Sciences

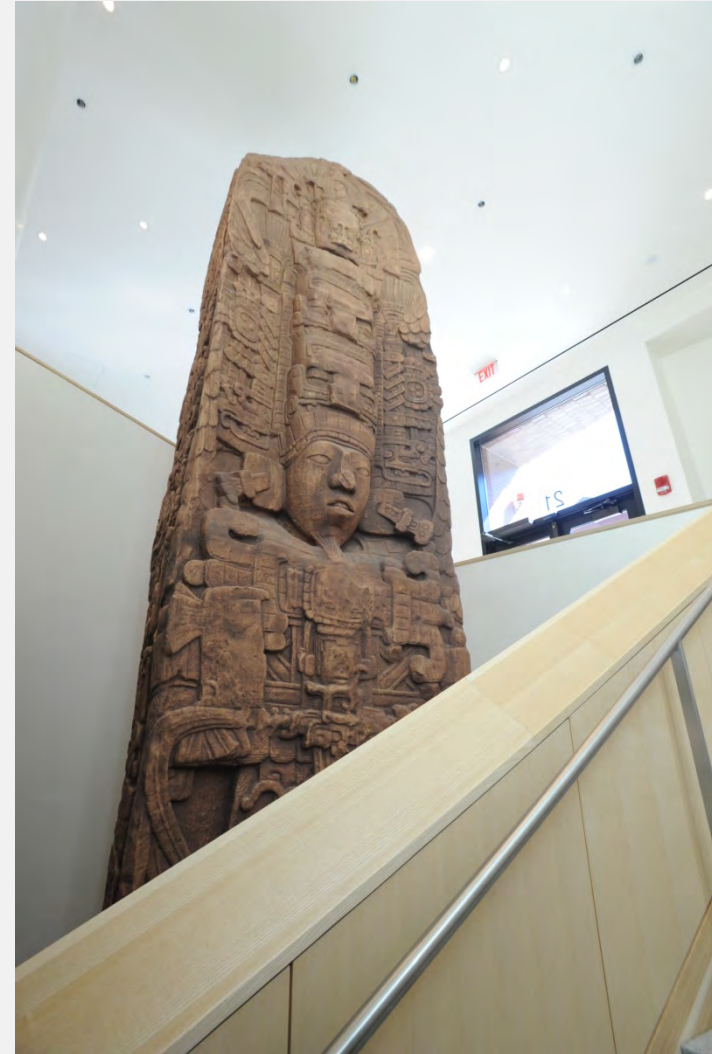


Comprehensive building renovation and addition · *Kennedy & Violich Architecture*

Tozzer Anthropology Building

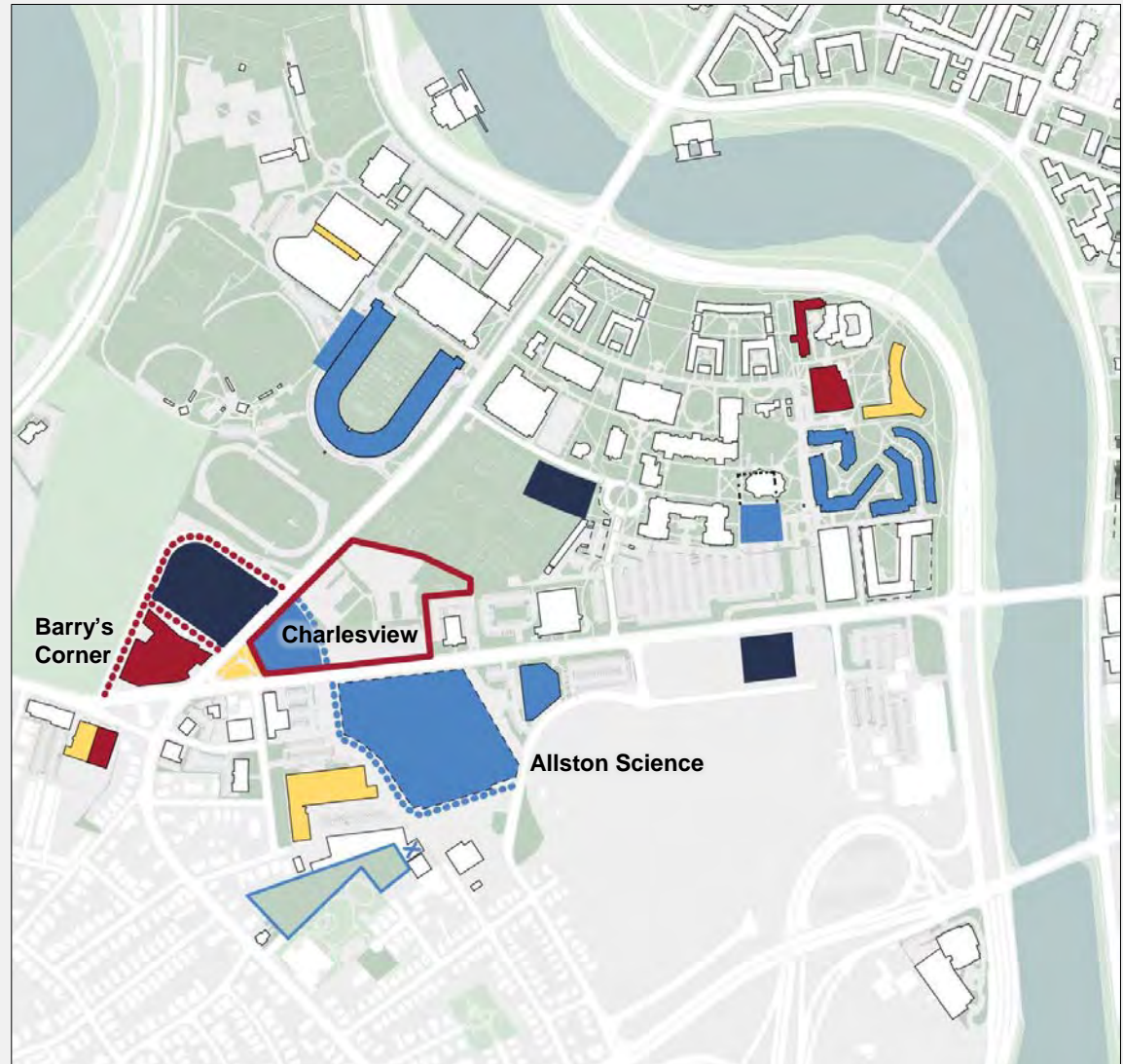
Recently Completed

Faculty of Arts and Sciences



Comprehensive building renovation and addition · *Kennedy & Violich Architecture*

-  Recently Completed
-  Construction Underway
-  Next Phase
-  Later Phase





Allston Science

Barry's Corner – Residential/Retail Project



Continuum



Campus Sustainability

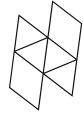
Building a Sustainable Community



- April 2014: President Faust announces **\$20 million Climate Change Solutions Fund**
- March-June 2014: Co-host **Green Labs Symposium and International Sustainable Campus Network conference**
- May 2014: **Secondary field in energy and environment** for undergraduates created
- October 2014: Release University-wide **Sustainability Plan**
- November 2014: Inaugural conference of **Harvard Center for Green Buildings and Cities**



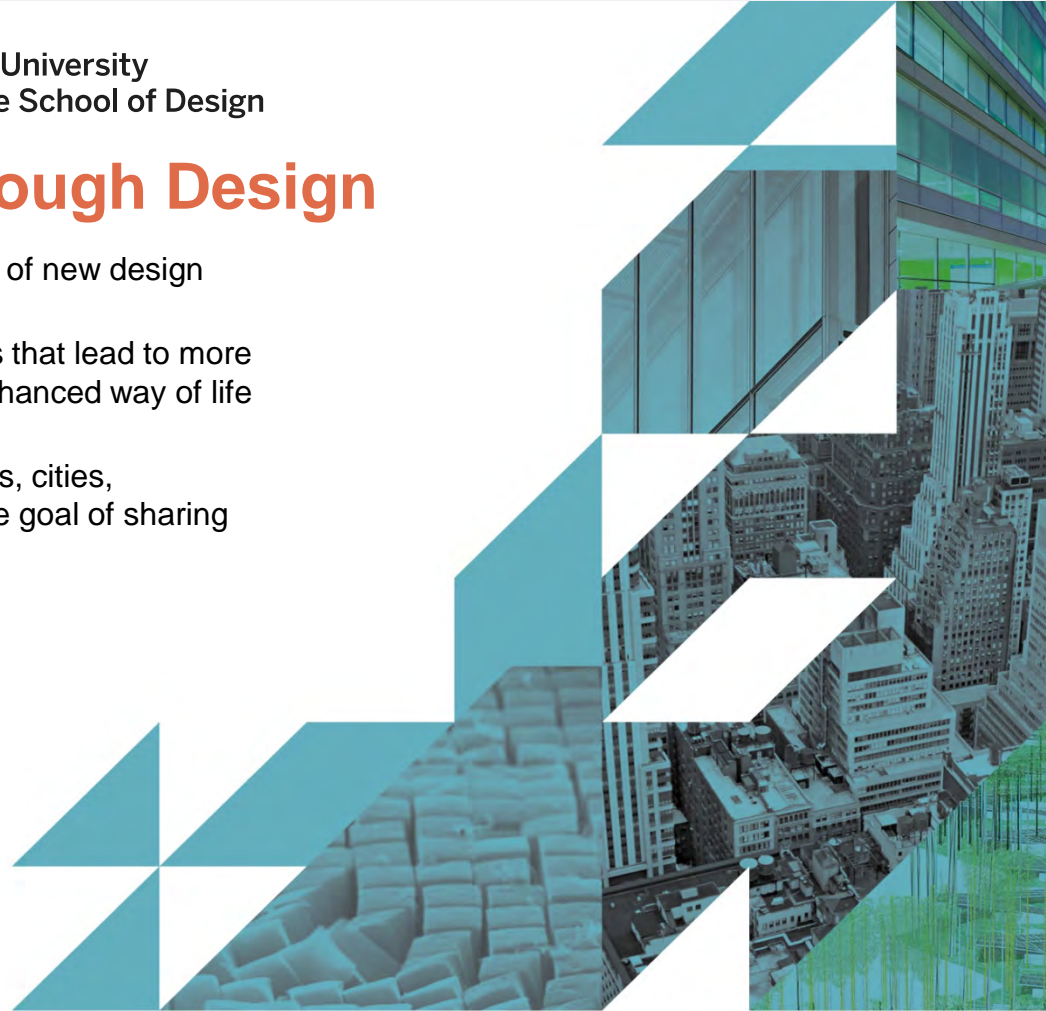
HARVARD
**CENTER FOR GREEN
BUILDINGS AND CITIES**
at the Graduate School of Design



Harvard University
Graduate School of Design

Driving Sustainability Through Design

- Dedicated to research that drives the development of new design strategies for sustainable building and planning
- Developing new processes, systems, and products that lead to more sustainable, high performance buildings and an enhanced way of life for people in the built environment
- Forming strategic partnerships with peer institutions, cities, governments, and industry thought-leaders with the goal of sharing and disseminating findings



Turning Research into Practice

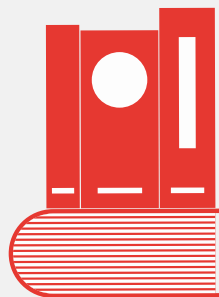


225

faculty affiliated with Harvard University Center for the Environment engaged in energy and environment-related research

260+

courses offered on energy, sustainability, or the environment



- 1. Leverage faculty/student expertise to tackle on-campus challenges**
 - HDS/GSD Health Assessment
- 2. Use campus as living lab for ongoing research**
 - HSPH House Renewal study
- 3. Student sustainability grants to fuel innovation**
 - Automating energy reduction in labs, rooftop stormwater modules

Engaging Future Leaders

"Students arriving today ought to leave Harvard with a deeper understanding of the complexity of sustainability challenges and be ready to address them no matter where their lives may lead."

- President Drew G. Faust



Fostering Collaboration and Shared Solutions

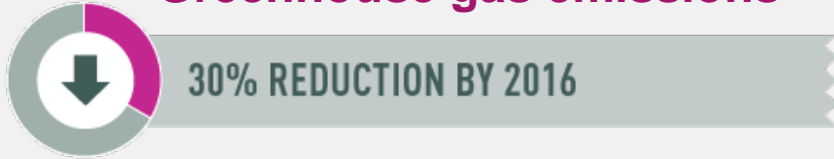
- **Cambridge Compact for a Sustainable Future**
- **Net Zero Task Force, Climate Change Vulnerability, Building Energy Use Disclosure Ordinance**
- **Hosted Green Labs Symposium, International Sustainable Campus Network Conference**



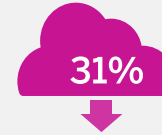


Our Goals

Greenhouse gas emissions



REDUCTION in greenhouse gas emissions including growth and renovation (FY06-FY13)



REDUCTION in greenhouse gas emissions excluding growth (FY06-FY13)

Waste per capita



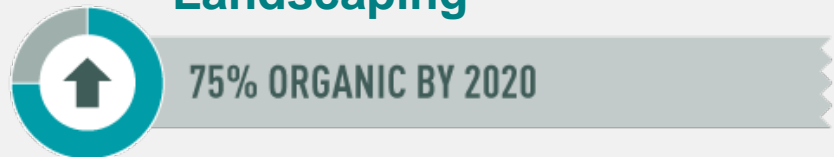
53% of total University waste **RECYCLED OR COMPOSTED** in FY13

Water use



23% reduction in **WATER** use from FY 06-13

Landscaping



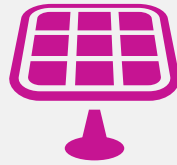
ORGANIC LANDSCAPING on over **90 acres**, including Harvard Yard

Confronting Climate Change

28% of progress toward
GHG REDUCTION GOAL
from fuel-switching at
steam plant



17% ELECTRICITY
from **RENEWABLE**
ENERGY sources



**LIFE CYCLE COST
POLICY**

to evaluate projects based on cost-effectiveness
and environmental benefit.

Energy Efficiency

- Energy planning incorporated in 5-year capital planning process
- Energy audits on 100% of energy intensive space
- Green Revolving Fund accelerated 200 projects with \$5.4 million in savings
- Over 1,300 energy conservation measures implemented
- Optimizing building performance: \$3.15 million saved at LISE lab building since 2009, \$990,000 in savings from additional projects at HMS, HBS, and HSPH

Green Building Commitment

- **Highest number of LEED certifications than any other higher education institution in the world according to USGBC:** 97 LEED certifications (65 in Cambridge) including Stone Hall (LEED Platinum) and Harvard Art Museums (LEED Gold)
- **Updated Green Building Standards released in 2014:**
 - Healthy materials disclosure requirements
 - Evaluate feasibility of Net Zero and Living Building Challenge
 - Specialized guidelines for energy intensive lab and IT spaces



Additional Sustainability Highlights



- **11.2% SOV rate**, 82% commuters took transit, biked or walked. Bicycle commuter benefits, and discounted Hubway memberships / MBTA passes.
- Recognized as **Gold Level Bike Friendly University** (highest ranked in New England and Ivy League)
- All dining halls **Green Restaurant Certified** and University-wide **Food Better Campaign** launches to spark multi-disciplinary dialogue on food system
- Harvard employees and students took 100,000+ **Hubway** trips in 2014 covering 133,000+ miles. Harvard supports 7 Hubway stations in Cambridge (12 system-wide).
- Newest **solar PV** project on roof of HDS Center for the Study of World Religions

Resources for Additional Information

PLANNING

**Harvard Planning &
Project Management**

www.hppm.harvard.edu

Allston

www.evp.harvard.edu/allston

Construction Mitigation

www.construction.harvard.edu

HARVARD IN THE COMMUNITY

www.community.harvard.edu

SUSTAINABILITY

Office for Sustainability

www.green.harvard.edu

Green Building Resource

www.green.harvard.edu/theresource

Green Office Program

www.green.harvard.edu/green-office



2014 Town Gown Report

City of Cambridge | Planning Board Presentation

February 3, 2015