



Lesley
UNIVERSITY



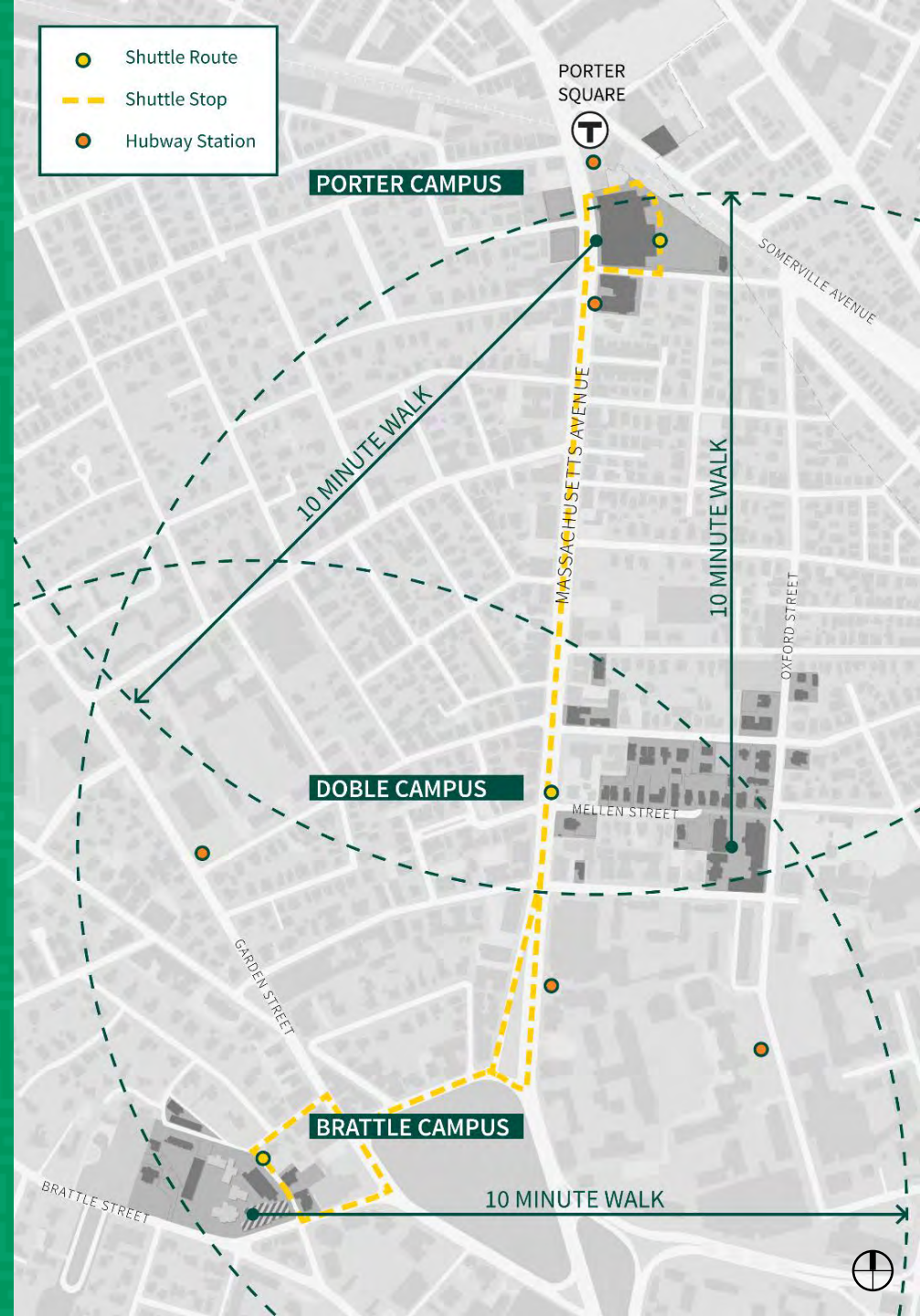
Town Gown
Planning Board
February 3, 2015

2014 Town Gown

- Campus Overview
- Projects by Campus
- Shuttle Service
- Sustainability
- Antennas
- Signage

Campus Overview

- 3 Cambridge campuses 10 minutes apart by foot
- College of Art and Design moved from Boston to Cambridge
- Shuttles run between each



Campus Overview

Lesley Profile – 2014

Students	Cambridge Only
Undergraduate	1,806
Graduate	2,362
Dormitory Beds	904

Faculty & Staff	Cambridge Only
Faculty	184
Staff	383



Campus Overview

Lesley Profile – 2014

- 58.5 buildings
- 23 offsite locations
 - 8 within MA
 - 15 outside MA



Campus Overview

Planning Efforts

- Strategic Plan
 - 3-year planning horizon/cycle (through 2016)
 - Developed over year of input
 - Projects mission driven objectives, including: value, enrollment, student success, scholarship, international recruitment, and the creation of an arts nexus in Porter Square
- Campus Plan Update
 - Assesses current use of space
 - Identifies facility needs to meet academic objectives
 - Beginning internal campus review Spring 2015
- NEASC Accreditation Study
 - April 15, 2015 visit
 - Will inform Strategic Plan accordingly



Projects By Campus

PORTER CAMPUS



DOBLE CAMPUS



BRATTLE CAMPUS



#

Completed

1. University Hall Energy Upgrades
2. Pocket Park
3. 1627 Mass Ave
4. Stebbins Hall Renovation
5. Exterior Lighting
6. Sherrill HVAC, Phase 1

#

In Construction

7. Lunder Arts Center
8. Threshold, 68 Oxford

#

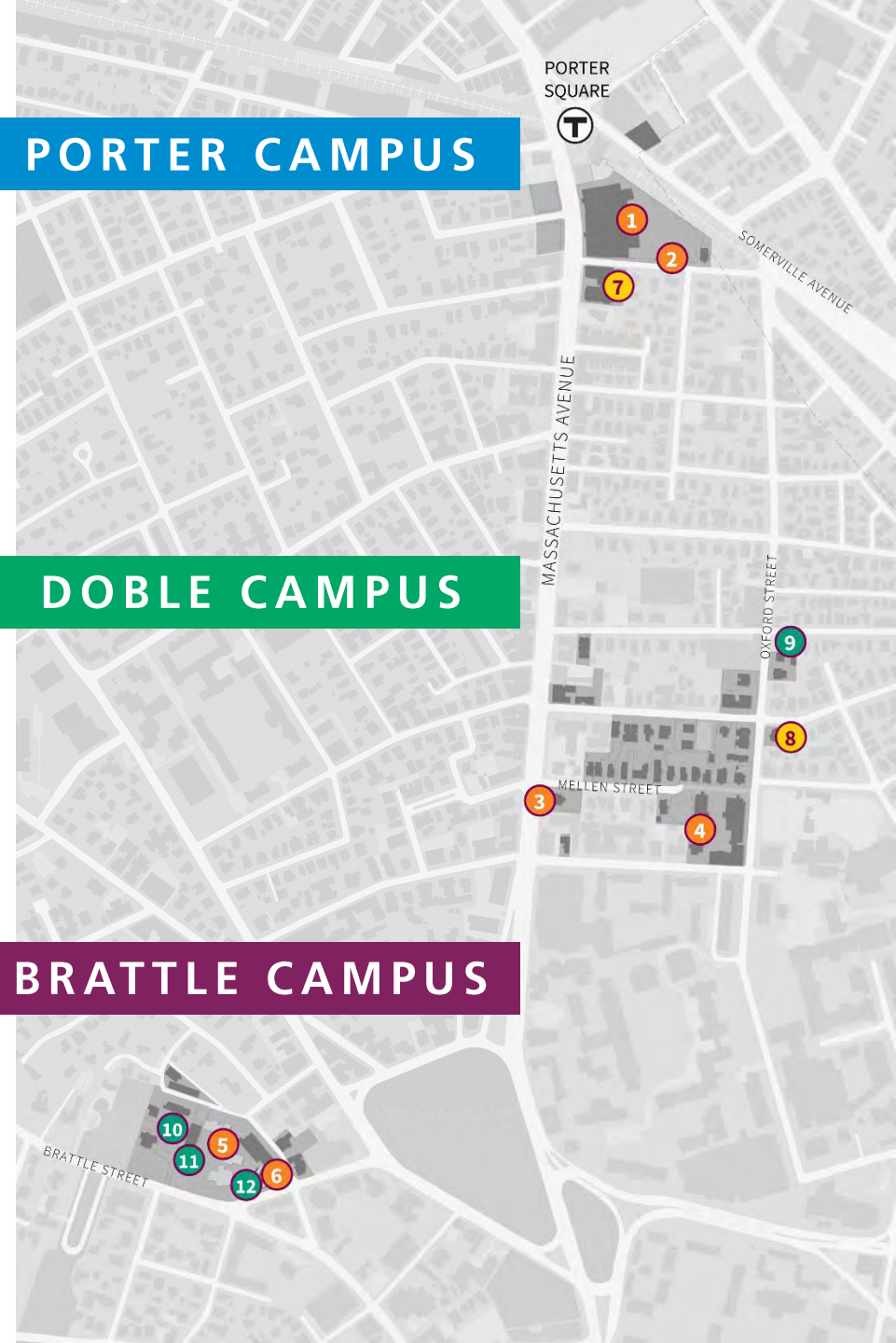
In Planning

9. Threshold, 82 Oxford
10. Community Garden Expansion
11. Lawrence Hall Interior Renovations
12. Sherrill HVAC, Phase 2

PORTER CAMPUS

DOBLE CAMPUS

BRATTLE CAMPUS



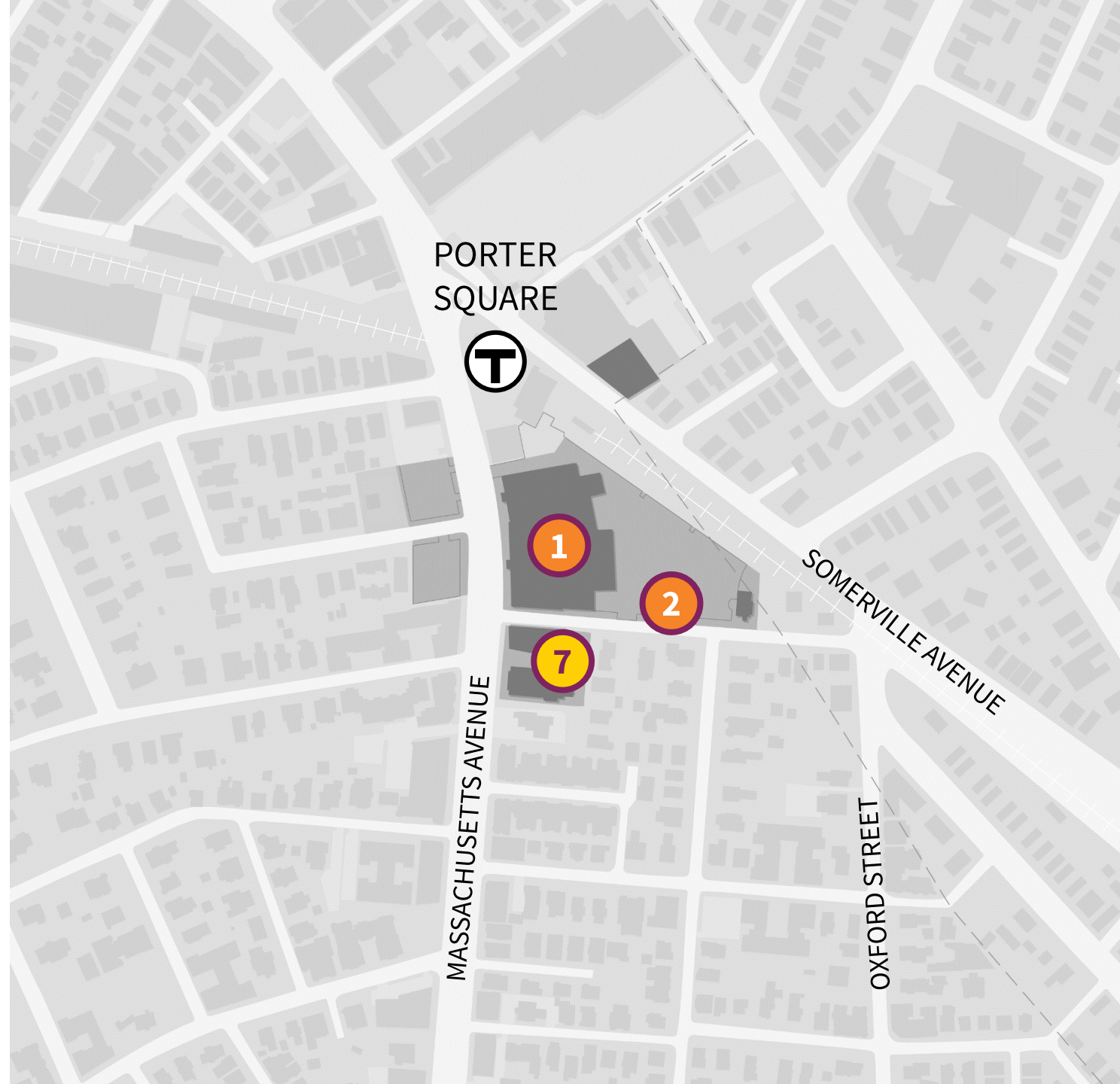
Porter Campus

— COMPLETED

1. University Hall Energy Upgrades
2. Pocket park

— IN CONSTRUCTION

7. Lunder Arts Center



University Hall Energy Upgrades

Completed:

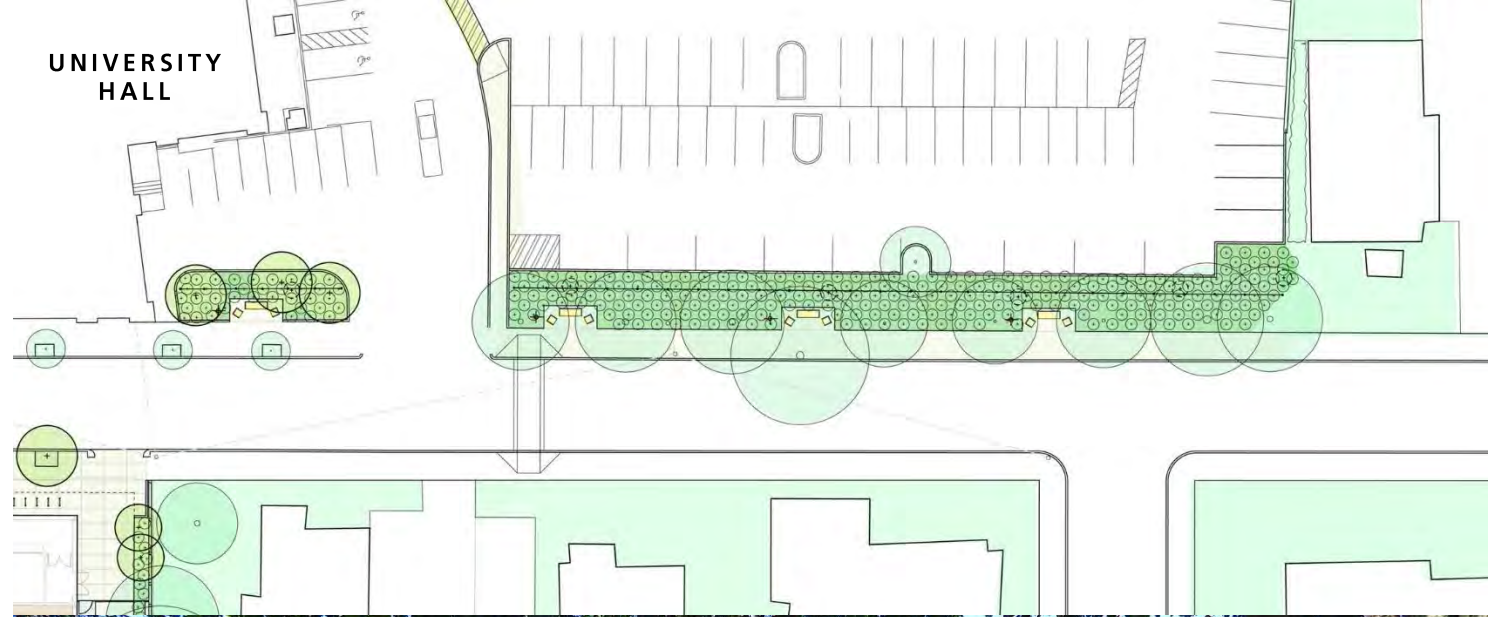
- Control valves added to 150 heat pumps
- HVAC schedules
- Daylight sensors
- LEDs – interior and exterior lighting
- 15% overall energy reduction for building
- Yearly reduction of 330 metric tons of CO₂ emissions



Pocket Park

Completed:

- On edge of University Hall parking lot
- Roseland Street improvements



Lunder Arts Center

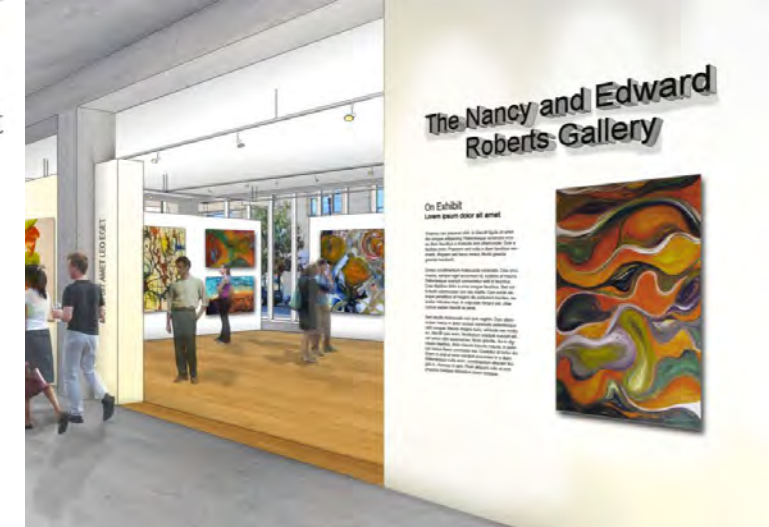
In Construction

- Arts nexus for Lesley University & Community
- New home of College of Art & Design
- One-third of all Lesley students engaged in the arts
- Year-round program of gallery shows, exhibits, speakers open to the community



Massachusetts Independent Comics Expo

Lunder Arts Center



- Plan consistent with community discussion
- Adaptive reuse of historic church as art library
- Premiere gallery and exhibition space, street level facing Mass. Ave.
- Welcoming plaza, glass enclosed Arts Commons

Bruner/Cott

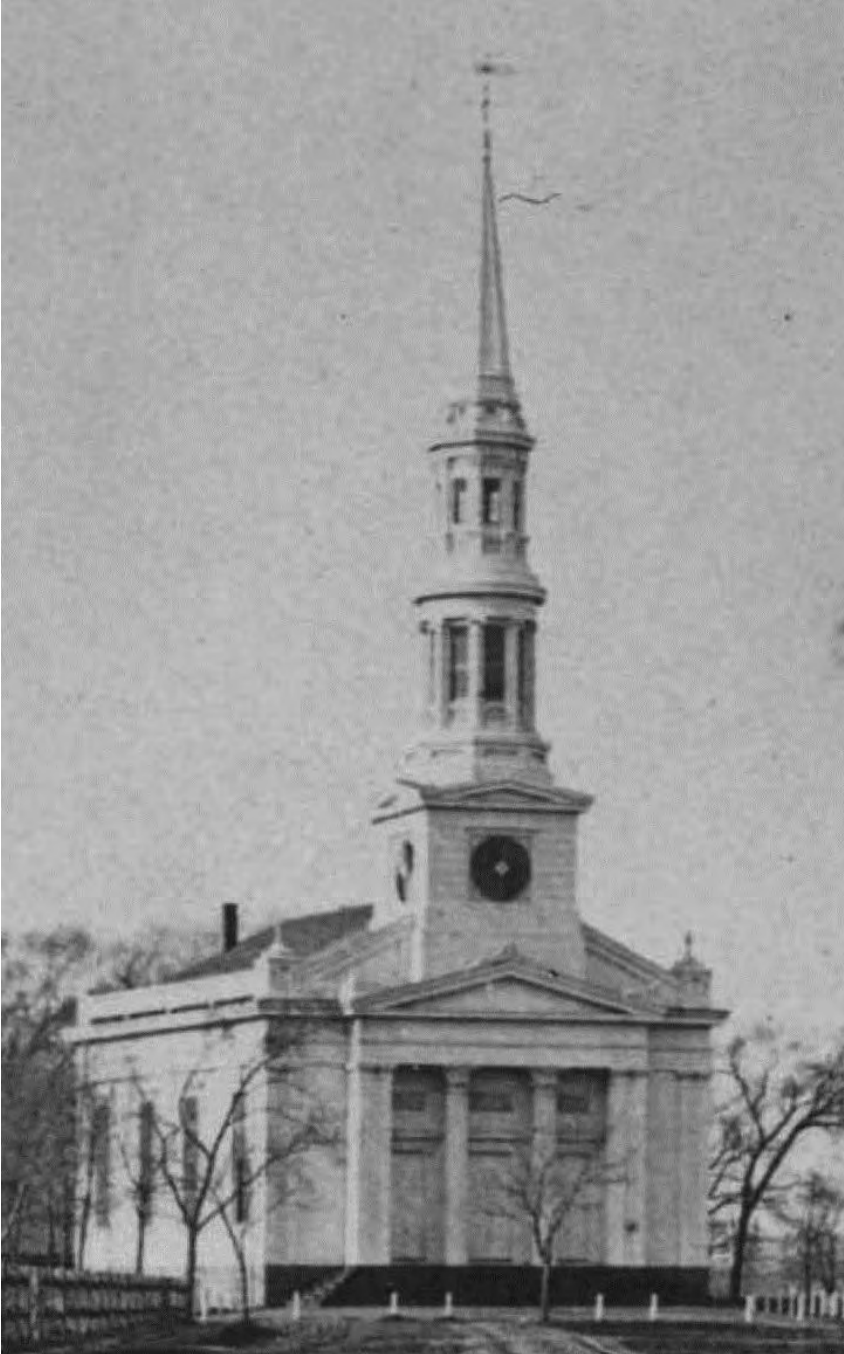
Lunder Arts Center

- College of Art & Design joins Cambridge Arts and Education community
- Collaboration, professional development with art teachers
- Gallery talks for K-12 students, teachers
- Adult education courses in visual arts, art history
- Community access to art library



Lunder Arts Center Restoration





1845 – Harvard Square



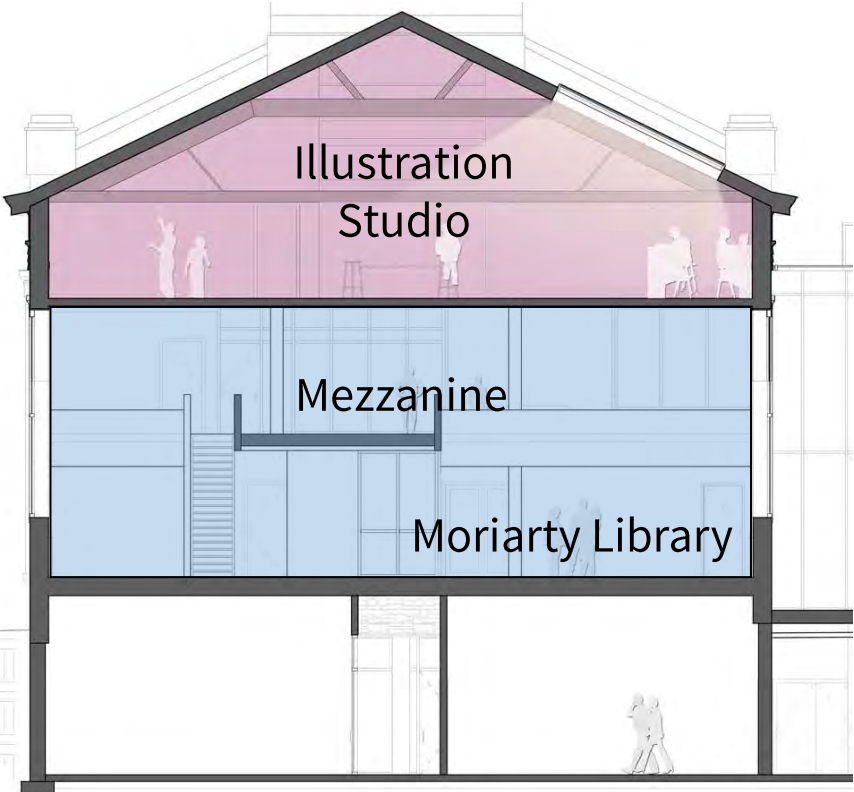
After 1906 – Porter Square



Today – Porter Square

Lunder Arts Center

Interior Renovation – Moriarty Library



Before



After



Lunder Arts Center

Attic Renovation – Illustration Studio



Before

After

Lunder Arts Center

Atrium Entrance



Lunder Arts Center

Enhanced Public View



New design brings historic building forward, improving its sitelines.

Doble Campus

COMPLETED

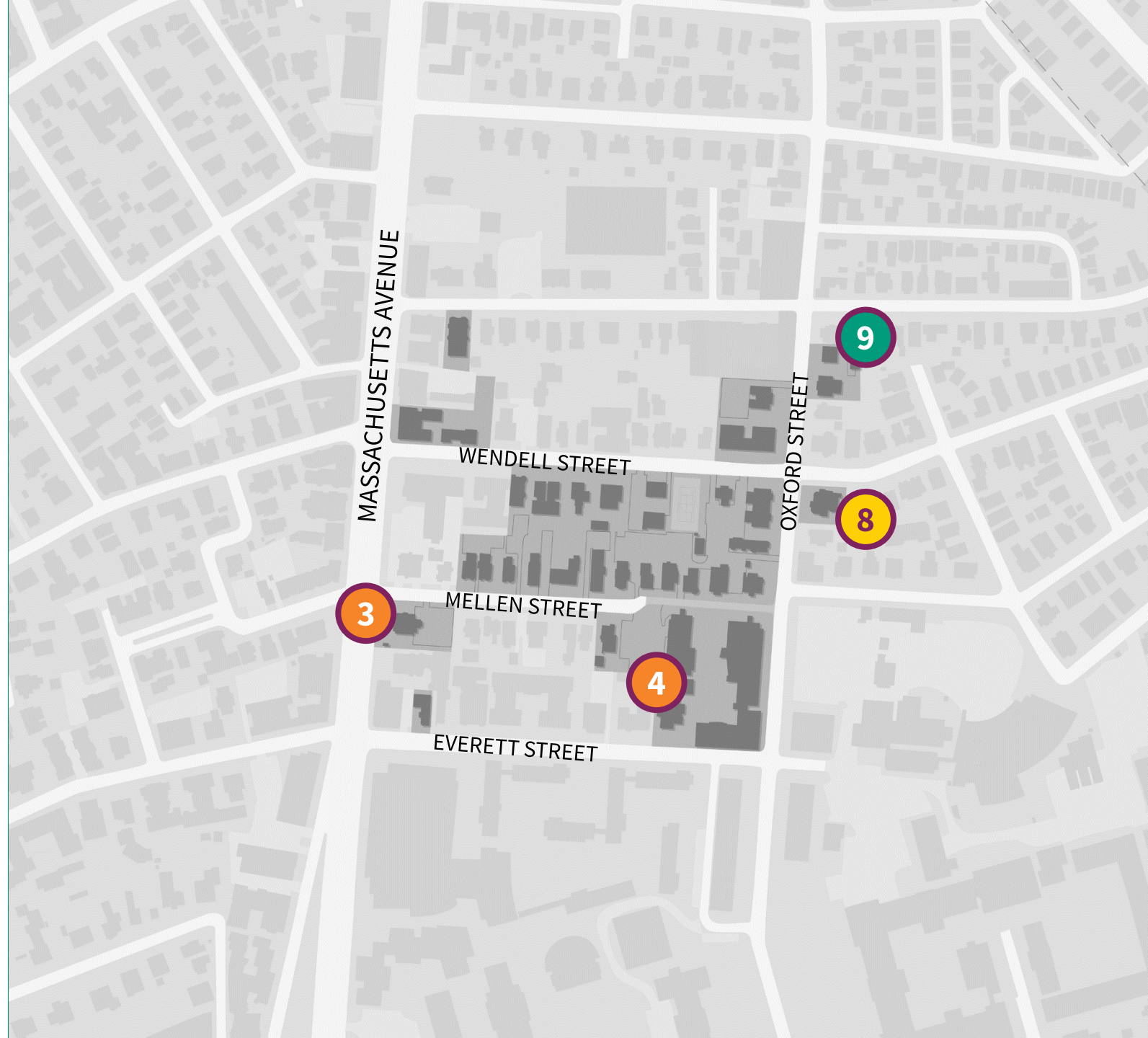
- 3. 1627 Mass Ave Visitors' Service Center
- 4. Stebbins Hall

IN CONSTRUCTION

- 8. Threshold, 68 Oxford

IN PLANNING

- 9. Threshold, 82 Oxford



Visitors' Service Center

1627 Mass Ave

Completed

- Ground level renovation
- Exterior hand rails



Stebbins Hall

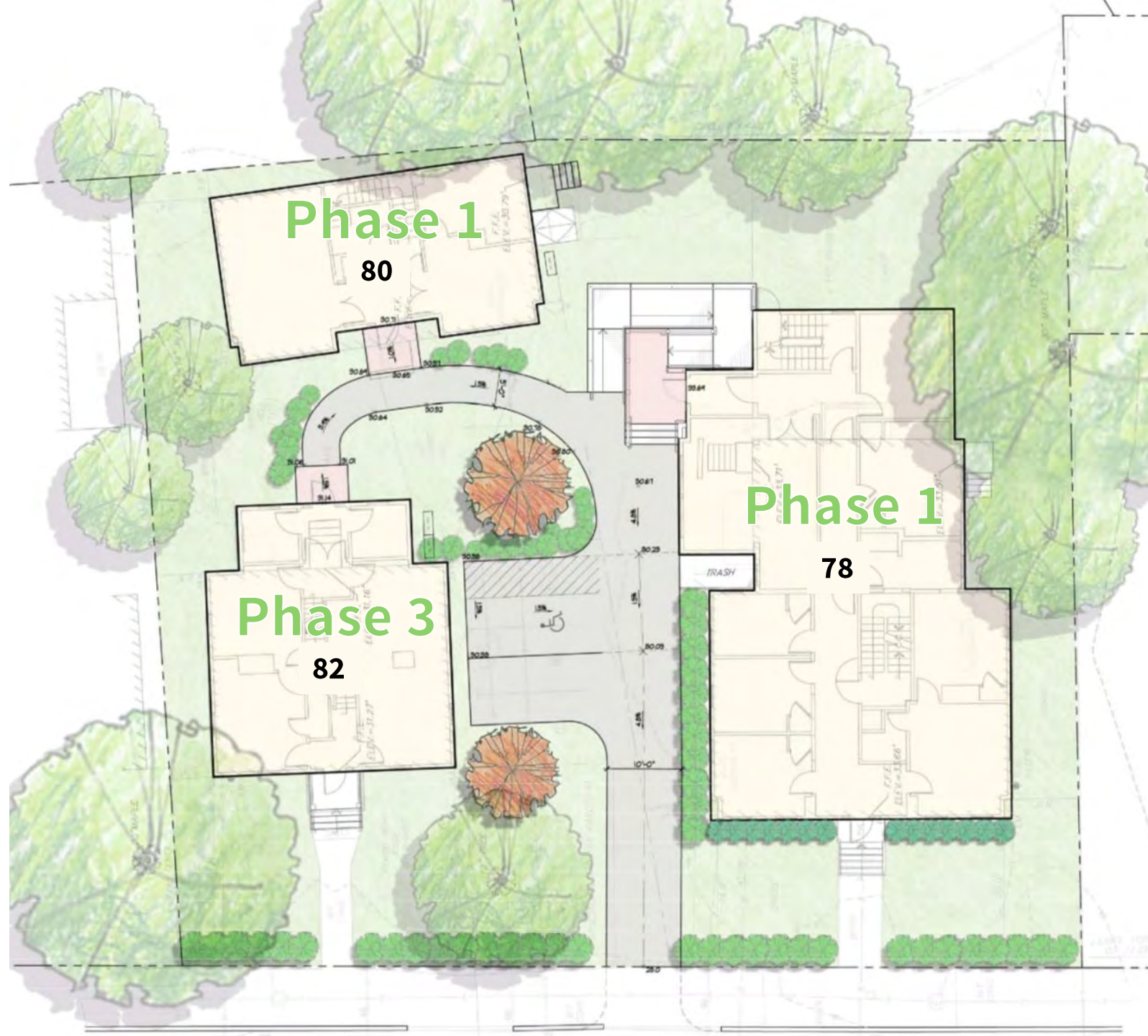
Completed:

- Fire-suppression system overhaul
- Accessible restrooms
- HVAC improvements
- Elevator & accessible entrance



Threshold Renovations

- Program serves young adults with cognitive and learning disabilities
- Renovations to better serve needs of graduates who live & work locally
- Improved living and learning spaces, exterior, and grounds
- 3 phases of work
 - Phase 1 completed
 - Phase 2 in construction
 - Phase 3 in planning



Threshold Renovations In Construction: Phase II

- Interior rehab of 68 Oxford Street
- Improved residence life
- ADA improvements, including elevator and ramped entrance



Threshold Renovations

In Planning: Phase III

- Renovation of 82 Oxford
- Office space for Program
- Improved accessibility



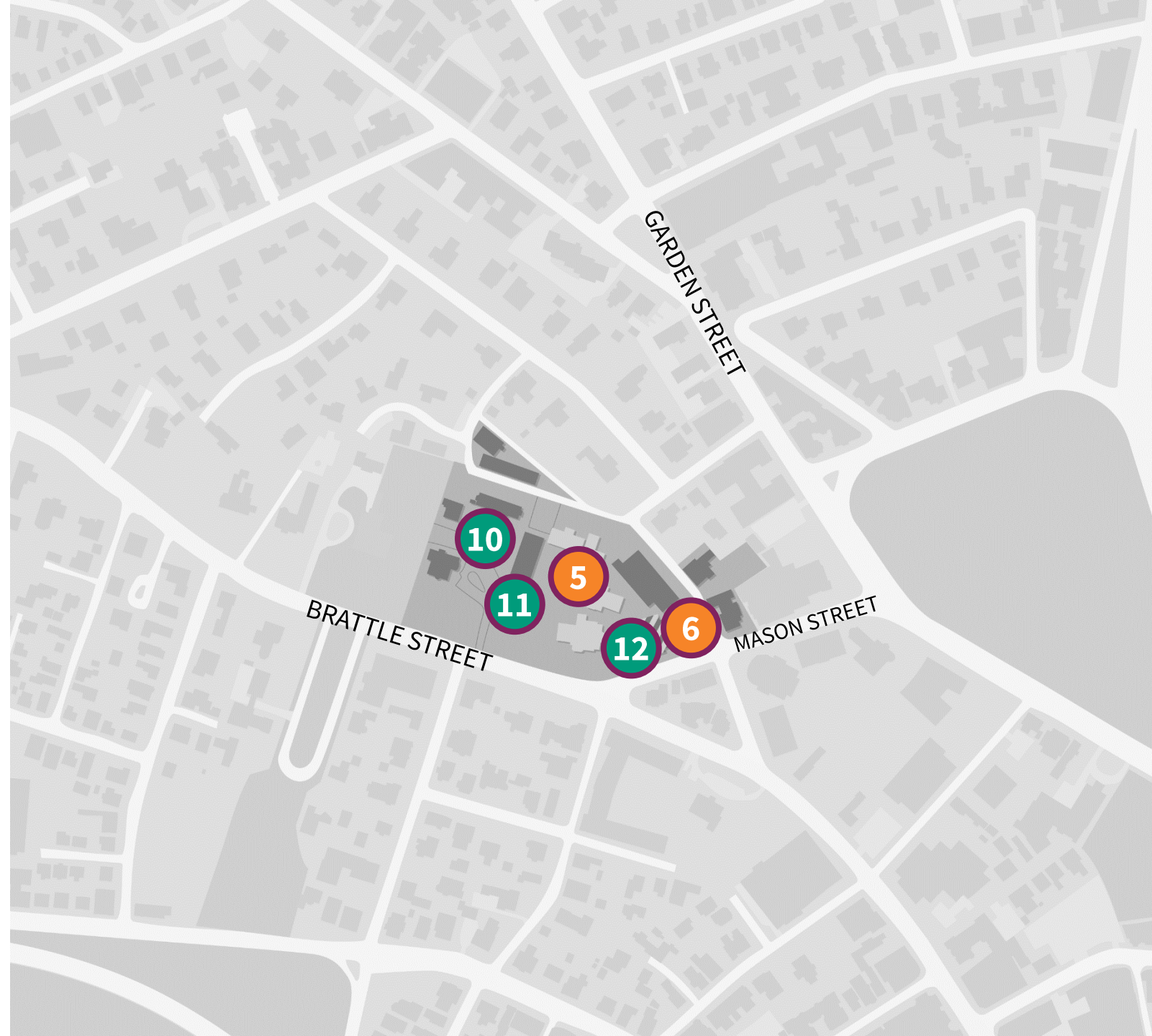
Brattle Projects

COMPLETED

- 5. Exterior Lighting
- 6. Sherrill HVAC, Phase 1

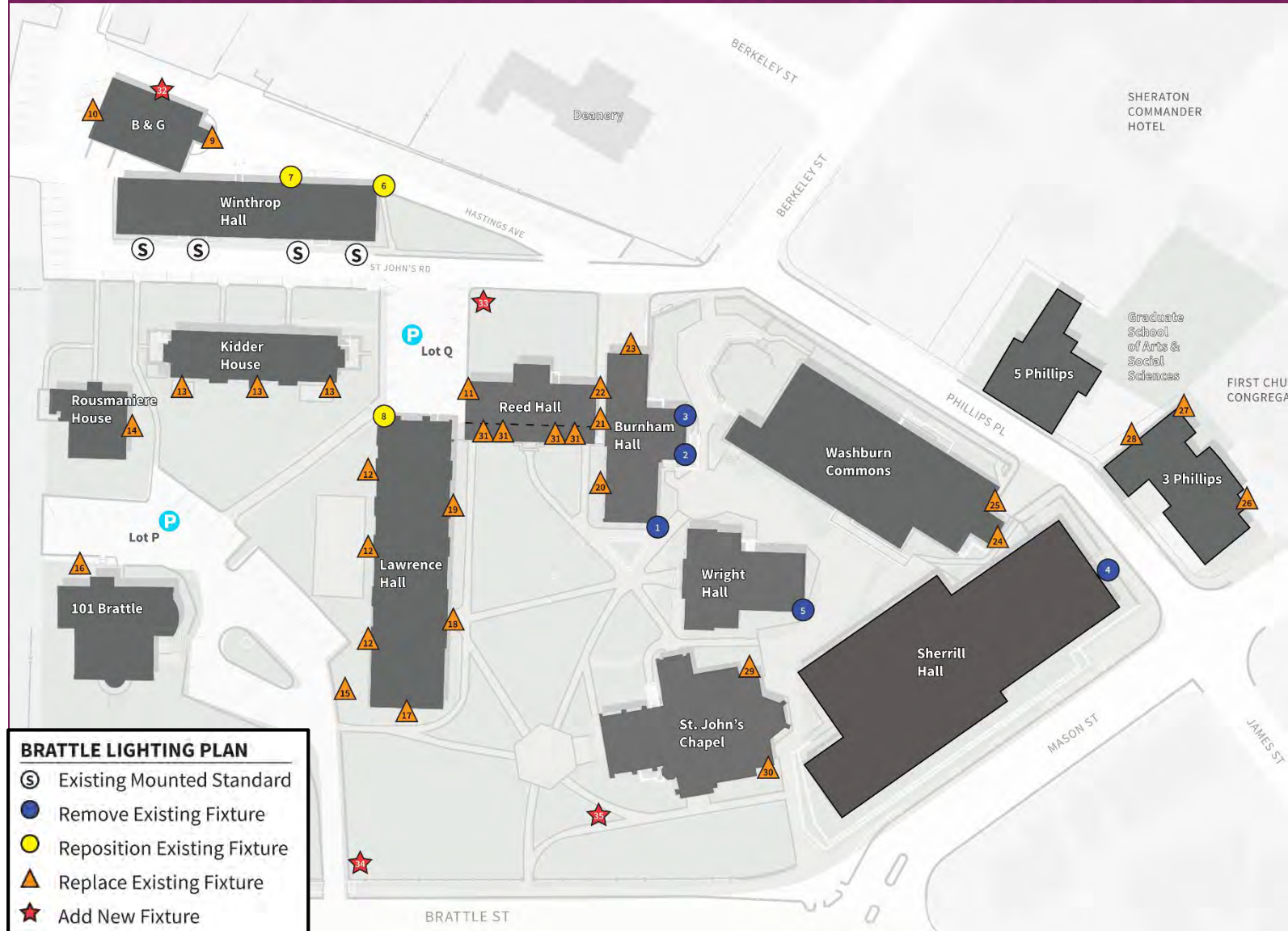
IN PLANNING

- 10. Community Garden Expansion
- 11. Lawrence Hall Interior Renovations
- 12. Sherrill HVAC, Phase 2



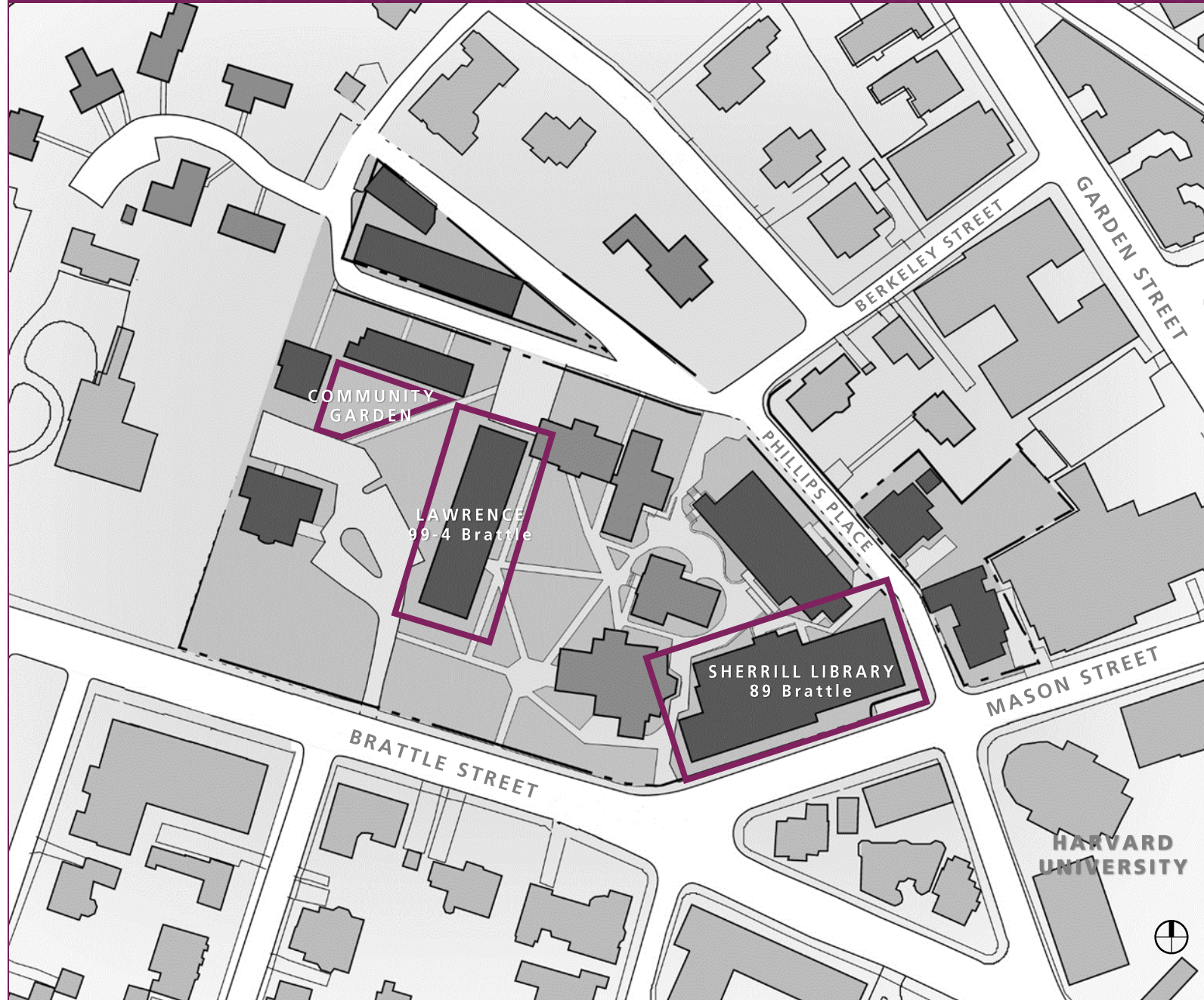
Exterior Lighting Completed

- Replaced inefficient lighting with LED models
- Reduced night sky pollution



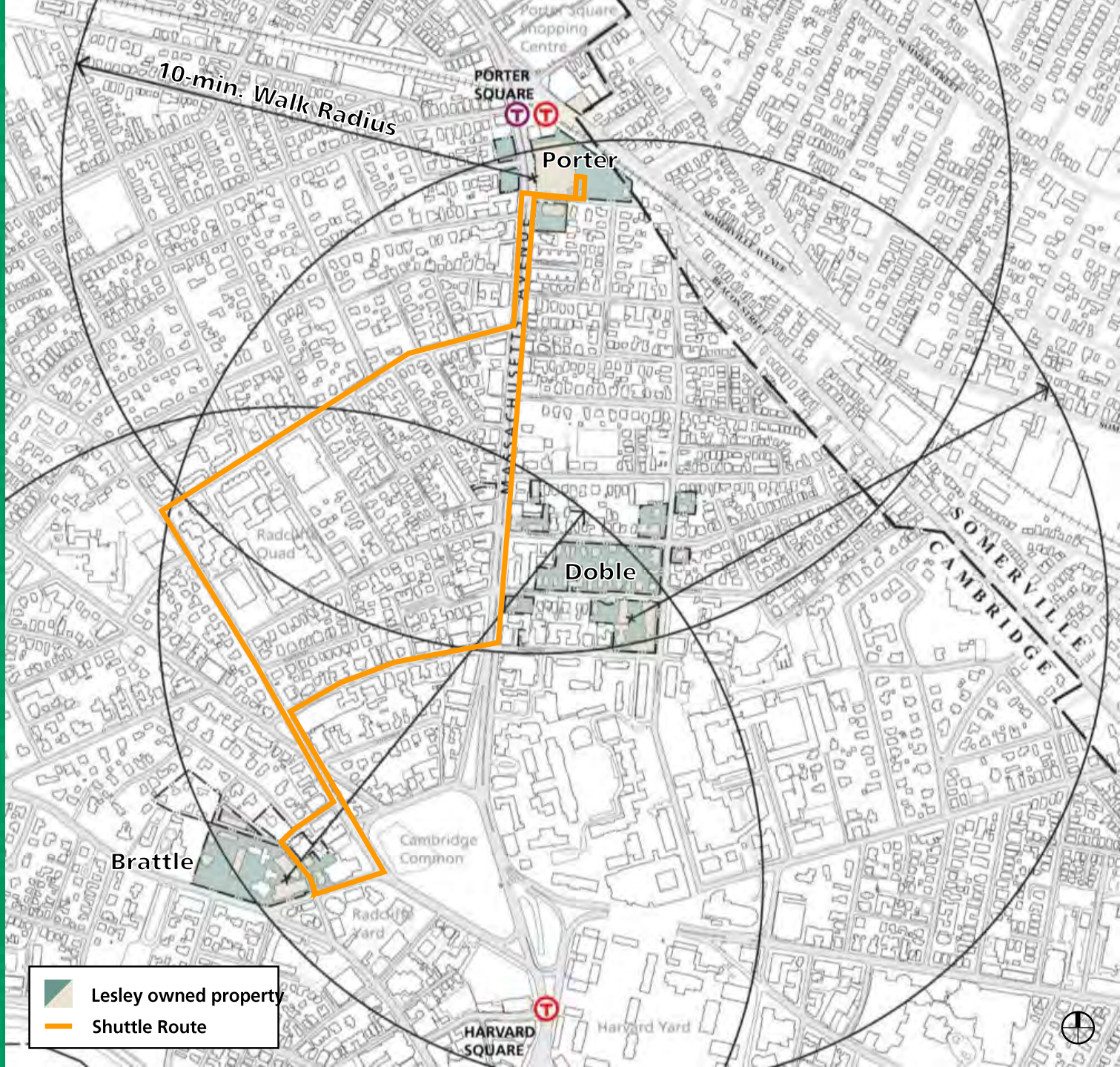
Brattle Projects In Planning

- Community Garden expansion
- Sherrill Library HVAC Upgrade
- Lawrence Hall Improvements (continuing)



Shuttle Service

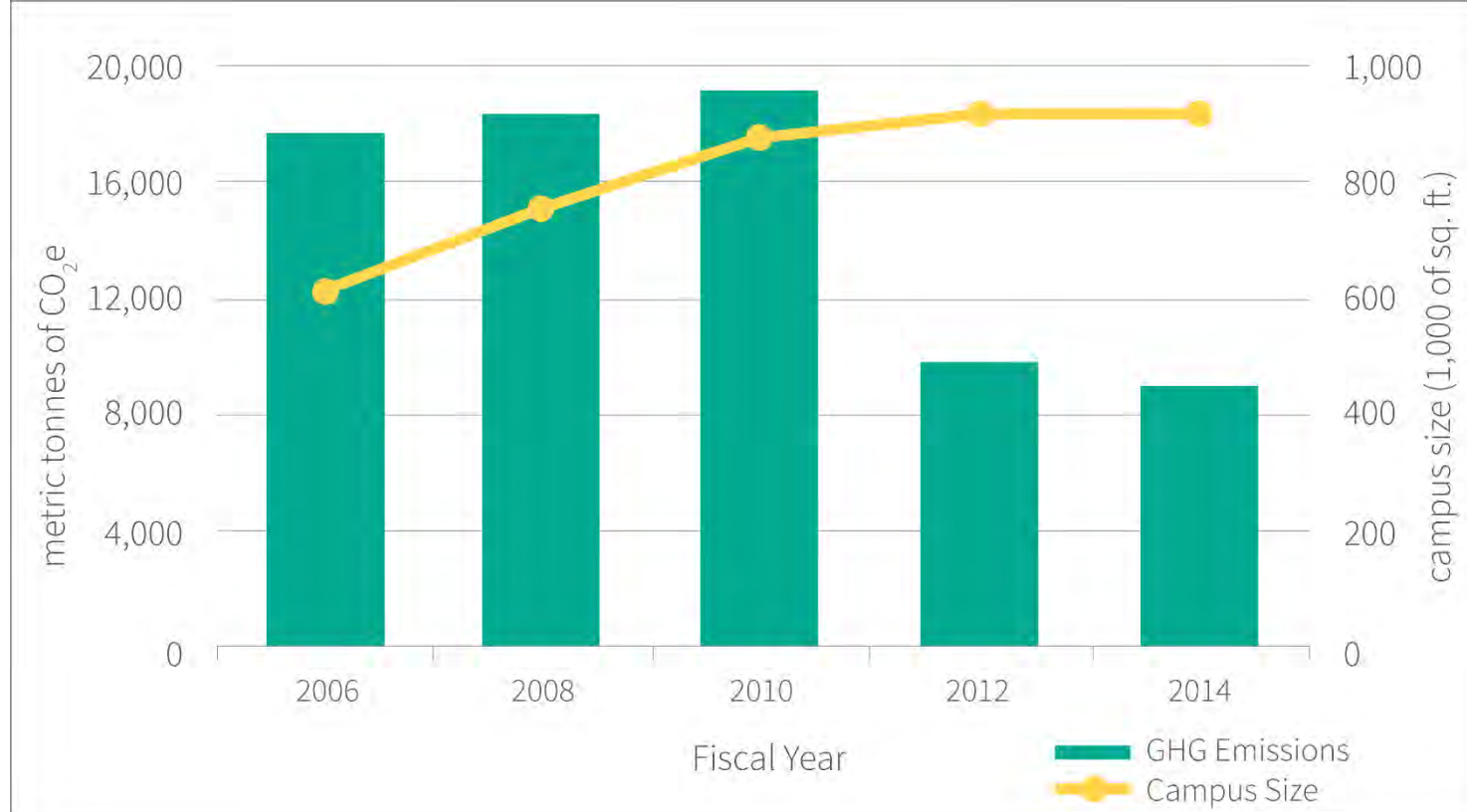
- Connects 3 Cambridge campuses
- One 32 capacity bus
- One 15 seat van
- Monday-Friday
- 7 AM – Midnight
- FY14 ridership – 74,288



Sustainability

Greenhouse Gas Emissions

- Attained 35% emissions reduction despite 33% increase in campus square footage since 2006
- Reduction strategies:
 - › Lighting & HVAC retrofits
 - › Reduced single occupancy trips
 - › Oil to natural gas boiler conversions
 - › Modifying education delivery, which reduced air travel
 - › Energy STAR appliances
- Developing New Goals



Sustainability

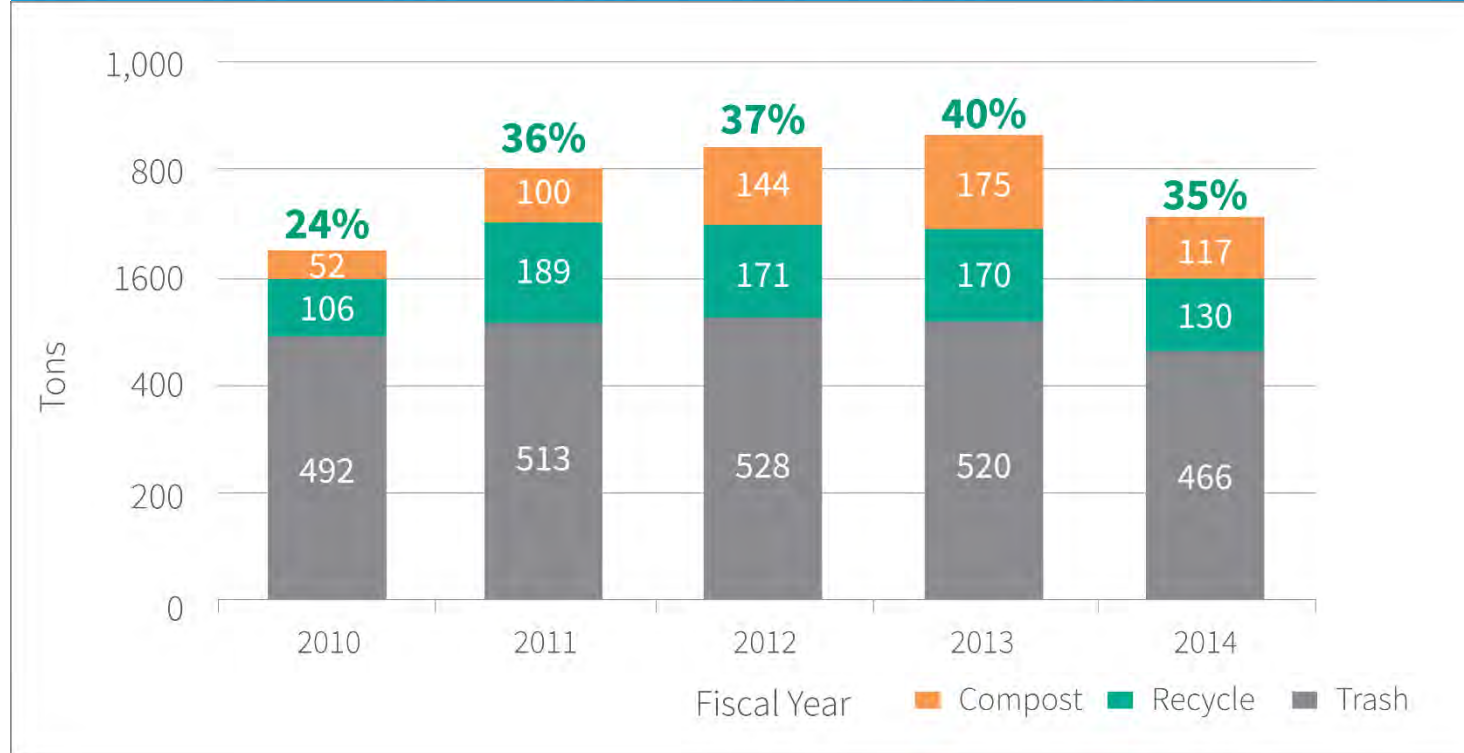
Waste Diversion

Goals

- 50% recycling rate
- Reduction in overall waste

2014 Achievements

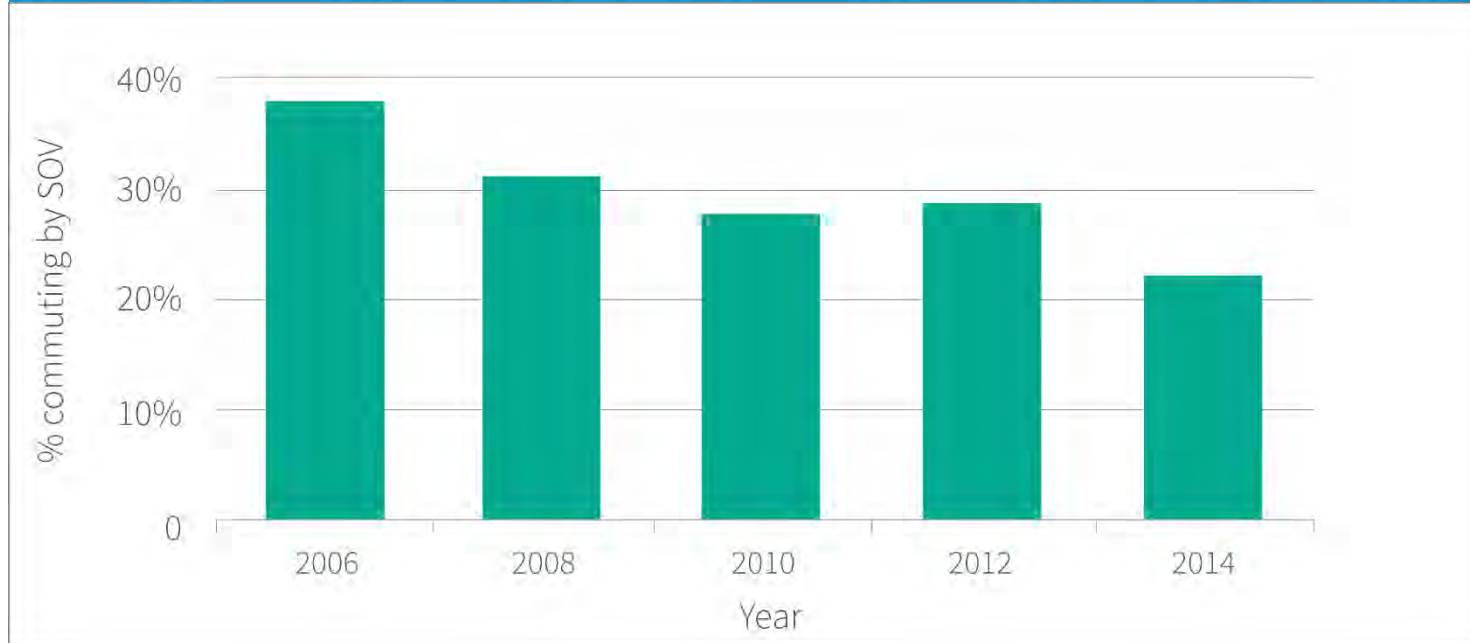
- 26% decrease in total waste from previous year
- Increase in recycling and composting from **30% to 68%** on Doble Campus (undergraduates) from previous year



Sustainability

Commuting

- From 2006 to 2014, single occupancy vehicle (SOV) trips fell from 38% to 22% of commuters
- Access to alternative transportation is encouraged



Sustainability

Bicycle Amenities

- 360 bicycle spaces
- 70 spaces constructed as part of Lunder Arts Center project
- Bicycle repair station on Doble Campus
- Investment in Hubway (15 spaces)
- Mass Bicycle Challenge participant



Antennas

Existing

University Hall

- Hidden, painted antennas within red tile details

Additional

- Small wave antenna on 30 Mellen – point to point to 1 Wendell and 78 Oxford
- Fiber optic work **eliminated 5 radio dishes in 2014**

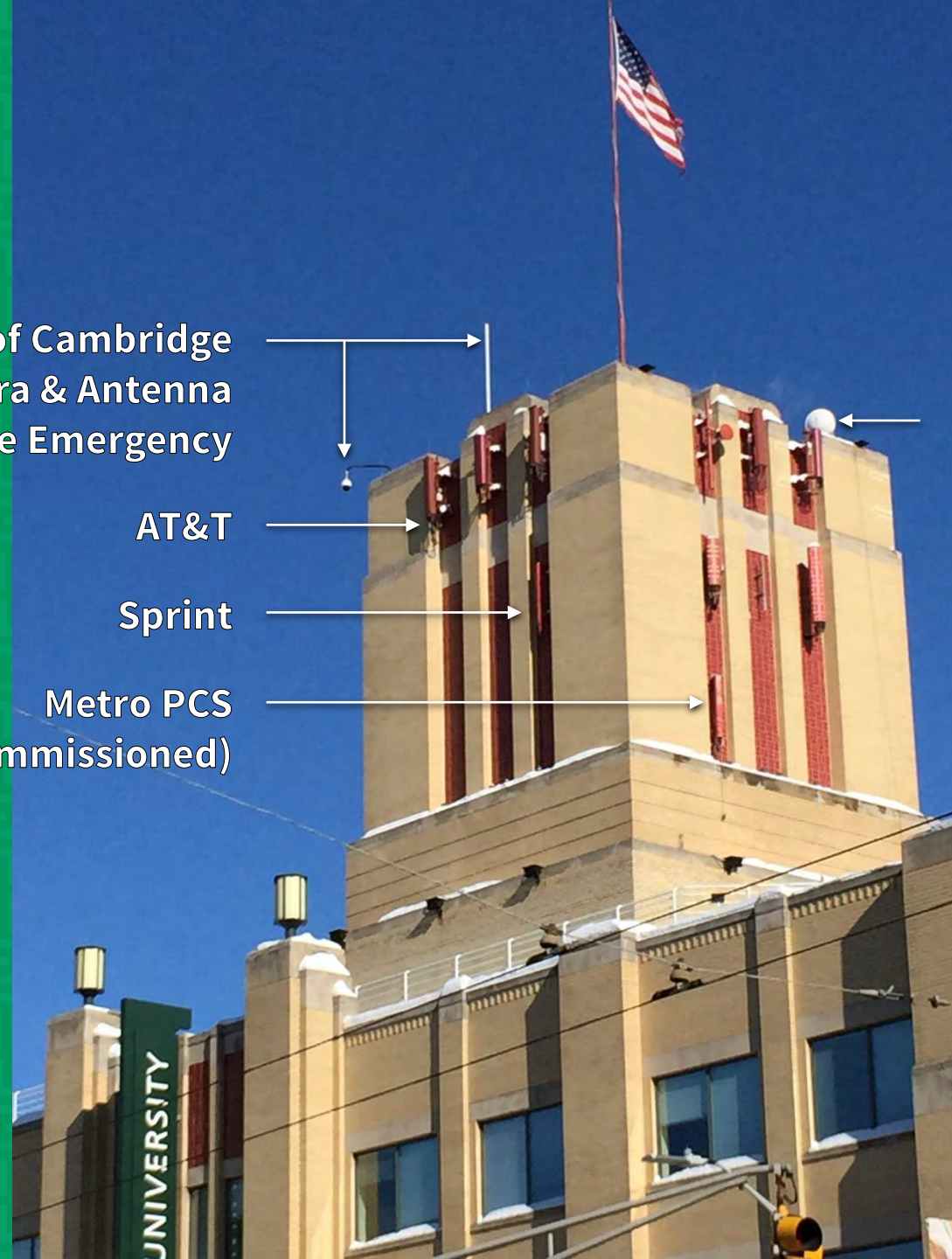
City of Cambridge
Camera & Antenna
for Fire Emergency

AT&T

Sprint

Metro PCS
(decommissioned)

University
Microwave
Dish
(*Phone
Connection
between
campuses*)



Antennas Planned

30 Mellen

- Visual impact study completed and project approved by City
- Designed to blend into existing building architecture
- Tentatively scheduled for summer 2015

Future

- Committed to attractive building aesthetics and City review and approval process



Signage / Artwork Campus Maps

- Comprehensive sign packet reviewed, approved and installed
- Horizontal maps installed last year



Campus Map, 1627 Mass Ave



Campus Map, Doble Quad

Signage / Artwork

Lunder Arts Center

- Temporary / periodic banner signs
- Building identification signage
- Vertical art element



thank you



Town Gown
Planning Board
February 3, 2014