



Lesley
UNIVERSITY



Town Gown
Planning Board
February 7, 2017

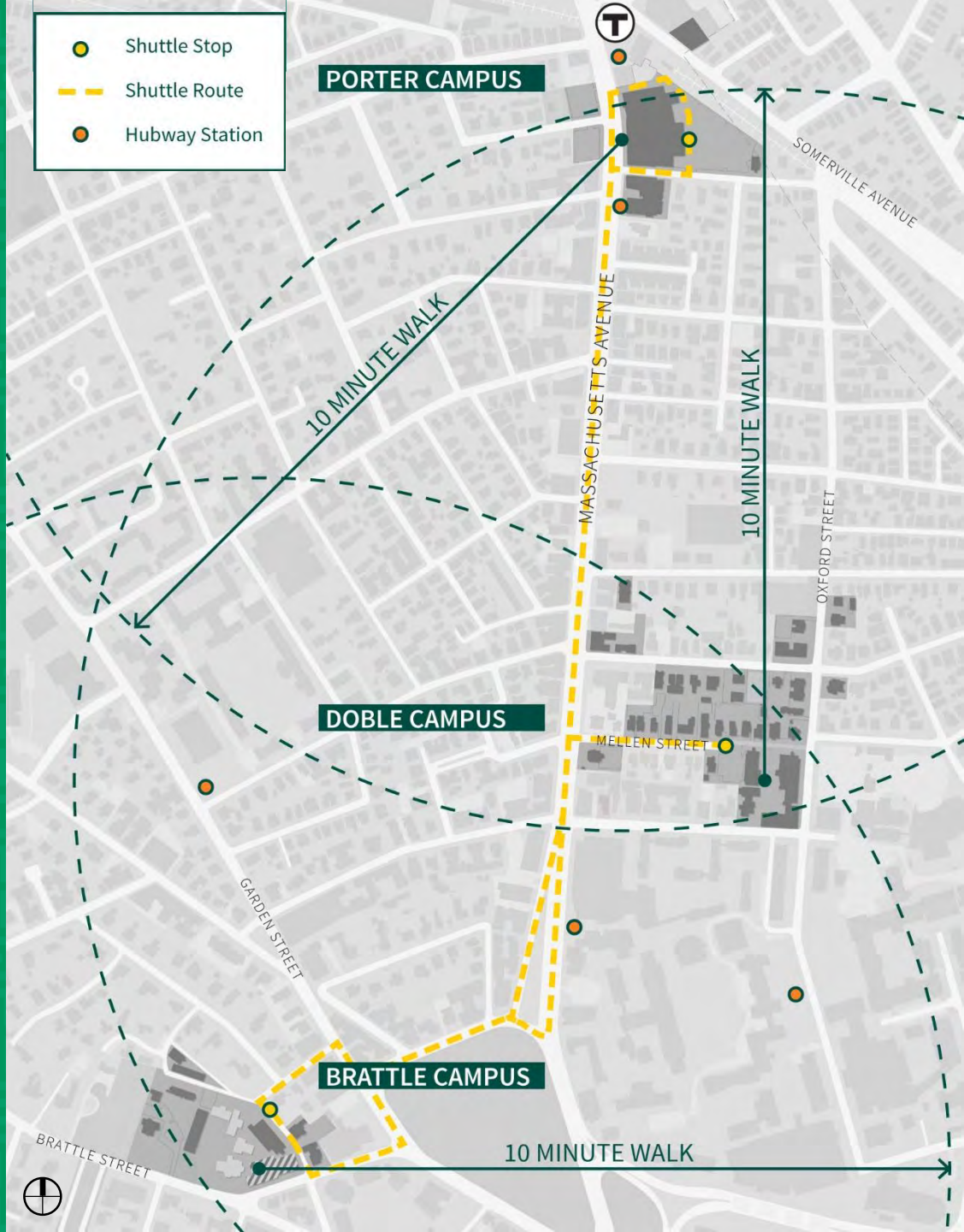
2016 Town Gown

- Campus Overview
- Projects by Campus
- Sustainability
- Cambridge Partnerships



Campus Overview

- 3 Cambridge campuses
- 10 minutes apart by foot
- Shuttles run between each campus



Campus Overview

Lesley Profile – 2016

- 58 buildings
- 28 offsite locations
 - 13 within MA
 - 15 outside MA



Campus Overview

Lesley Profile – 2016

Students	Cambridge Only
Undergraduate	1,708
Graduate	2,232
Dormitory Beds	889

Faculty & Staff	Cambridge Only
Faculty	175
Staff	366



Campus Overview

Planning Efforts

- Investment in Infrastructure
 - Electrical grid replacement
 - Cooling tower replacement
 - Phone system overhaul
 - Water infrastructure upgrades
- Sustainability
 - Energy assessment
 - Lighting improvements
 - Building Management System upgrades
 - Increased pervious surfaces
- Public Safety
 - New cameras
 - Door swipes on wood frame offices along Mellen St
- Campus Plan Update
 - Facilities Condition Assessment
 - Identifies facility needs to meet academic objectives
 - Internal review



Projects By Campus

PORTER CAMPUS

DOBLE CAMPUS



BRATTLE CAMPUS



#

Completed

1. Porter Café Renovation
2. Cooling Tower 1
3. Gallery Humidification Controls
4. Design Illustration Skylight
5. Mellen Street Pedestrian Walk
6. Doble Hall Interior Renovations, 4th Floor
7. East-West Building Conservation

#

In Construction

8. Electrical Grid Replacement, Phase 1
9. Retail Tenant Improvements
10. Public Safety Cameras
11. Phone System

#

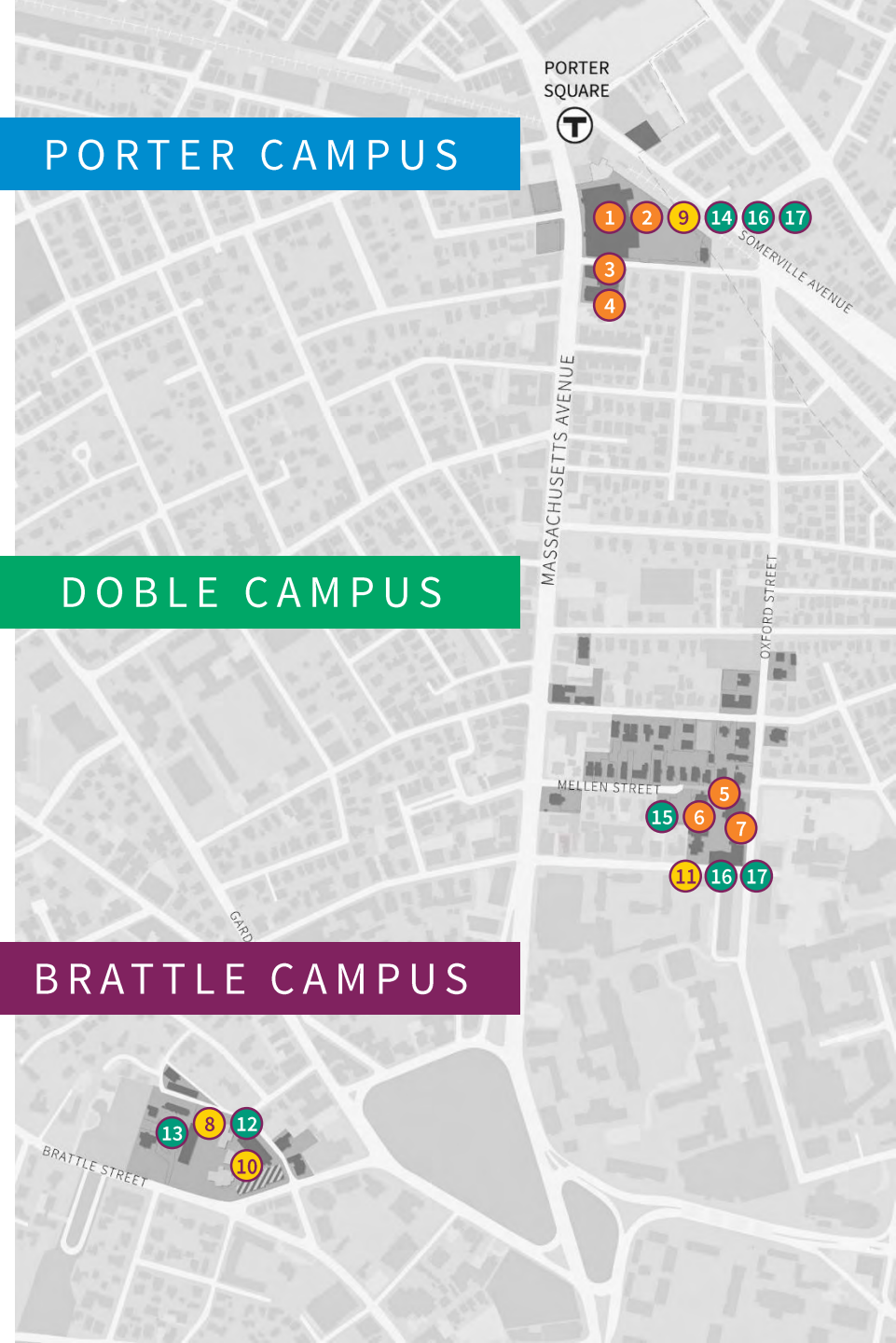
In Planning

12. Electrical Grid Replacement, Phase 3
13. Community Garden Expansion
14. Cooling Tower 2
15. Doble Hall Interior Renovations, 3rd Floor
16. Roof Improvements
17. Energy Upgrades – lighting, controllers & BMS

PORTER CAMPUS

DOBLE CAMPUS

BRATTLE CAMPUS



Porter Campus

COMPLETED

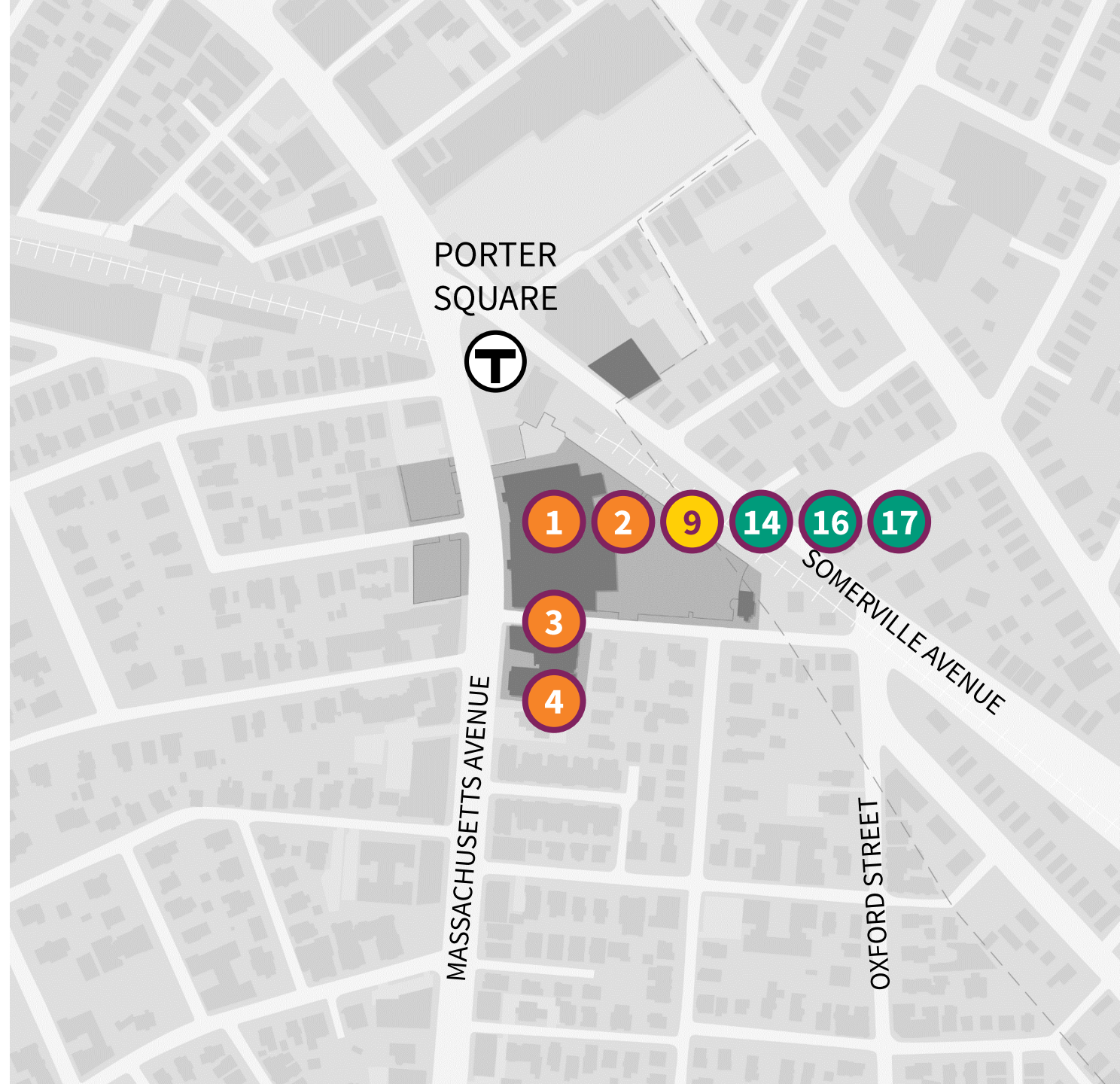
1. Porter Café Renovation
2. Cooling Tower 1
3. Gallery Humidification Controls
4. Design Illustration Skylight

IN CONSTRUCTION

9. Retail Tenant Improvements

IN PLANNING

14. Cooling Tower 2
16. Roof Improvements
17. Energy Upgrades – lighting, controllers and BMS



Porter Café Renovation



BEFORE

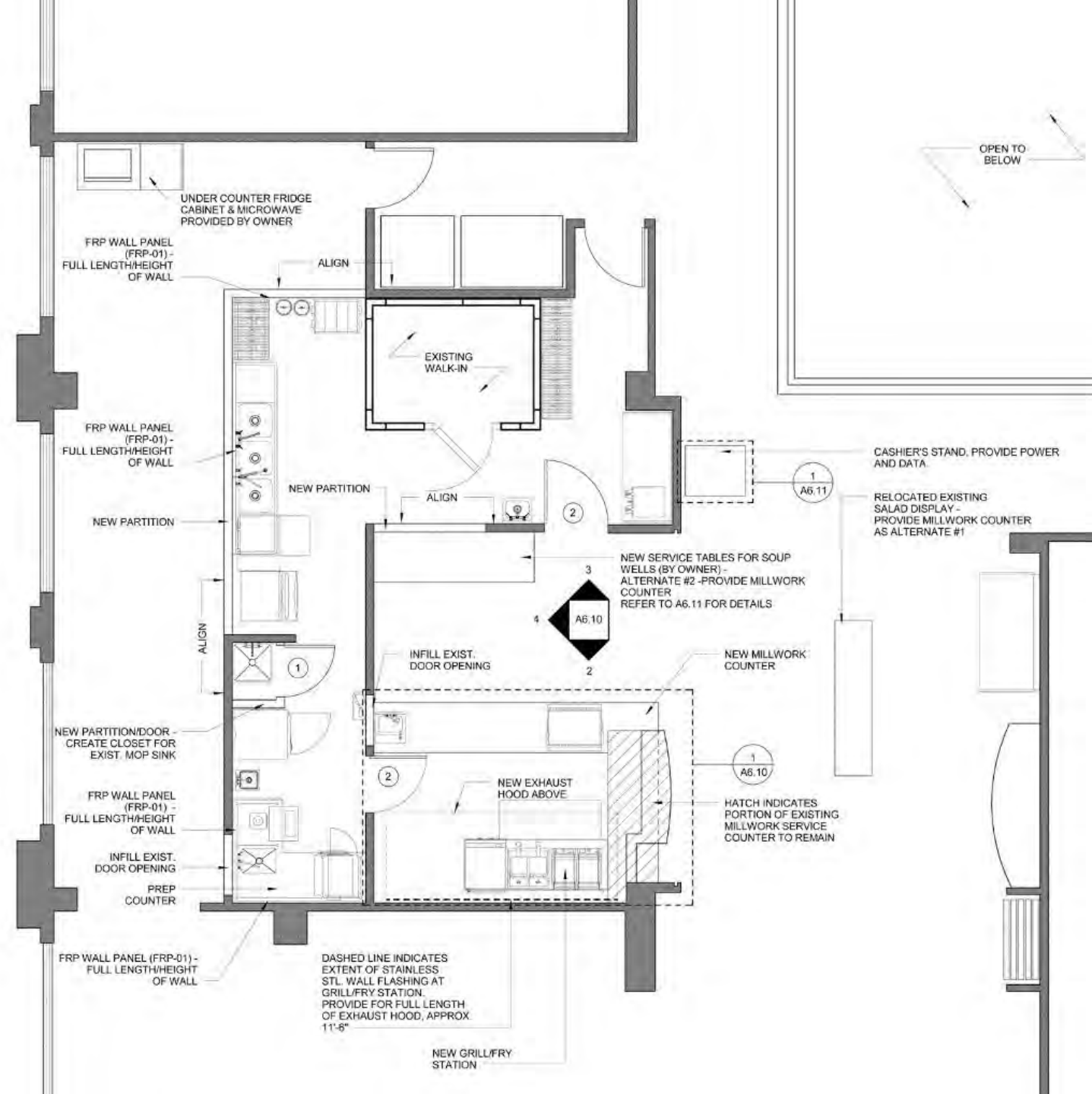


AFTER

Images Courtesy of PCA

Porter Café Renovation

- Expanded cooking capabilities
- Better serves a larger student population with LUCAD move

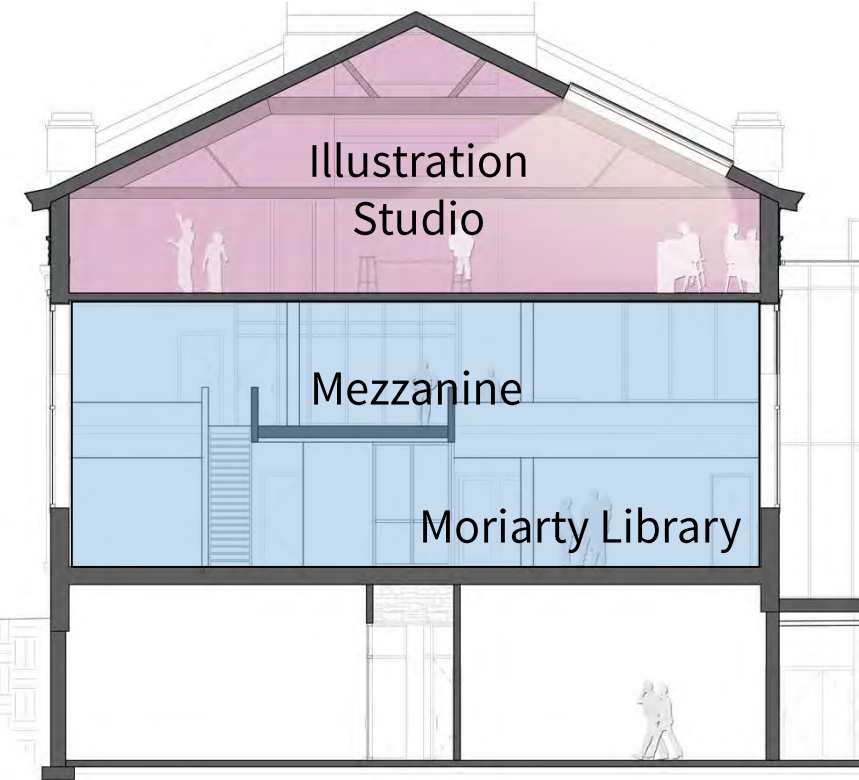


Gallery Humidification



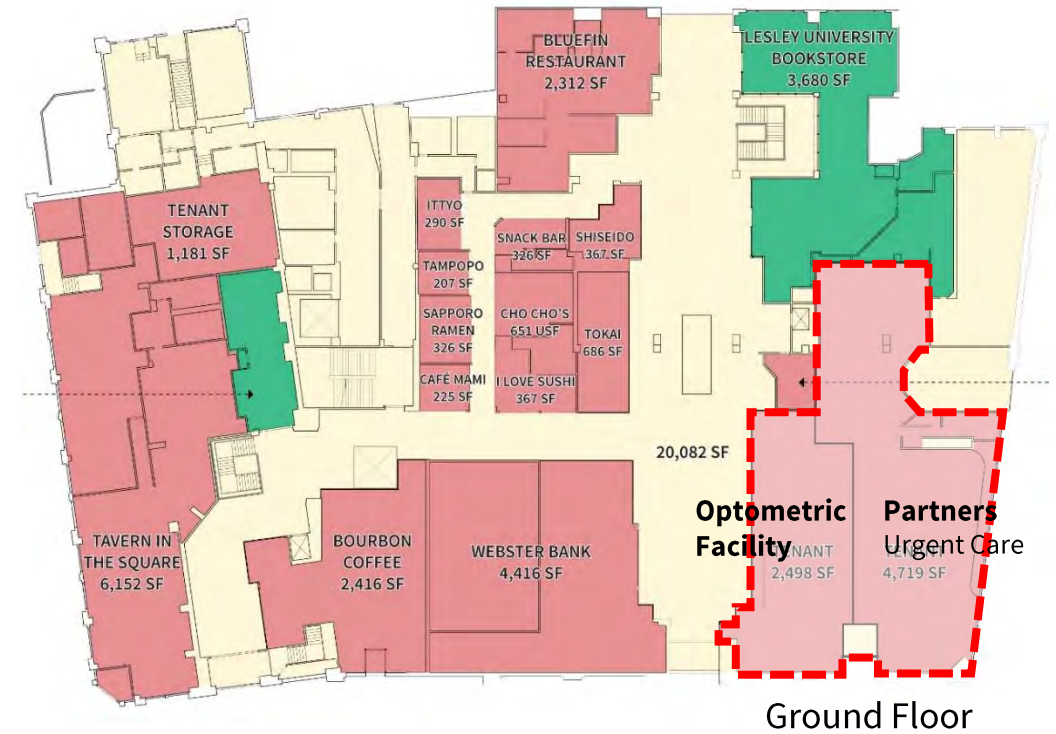
- Increased humidity control in galleries to accommodate world class exhibits
- Part of automated building management system

Design Illustration Skylight



- Originally planned as part of Lunder Arts Center
- Postponed to ensure student use by Spring 2015-2016 semester

Retail Tenant Improvements



- 30% of first two floors under renovation (53% of available retail space) to prepare “vanilla box” space for new tenants
 - Total demo of existing & removal of asbestos
 - Upgrades to MEP – heat pumps, HVAC, sprinklers, etc.
- Ground Floor (previously City Sports) to become Partners Urgent Care and optometric facility

In Construction

In Planning

- Cooling Tower
- Roof Improvements
- Interior lighting retrofit



Doble Campus

COMPLETED

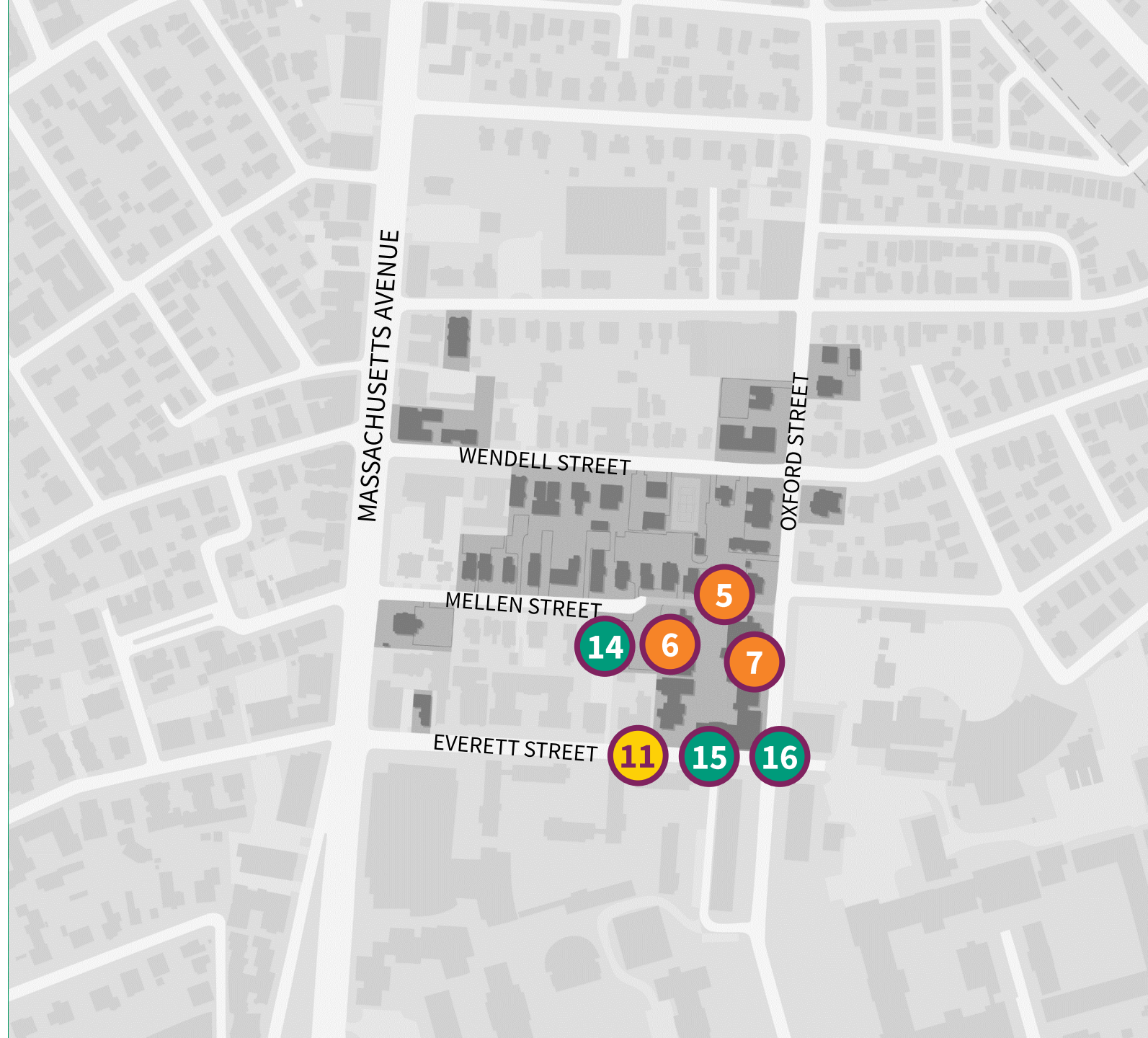
- 5. Mellen Street ADA Entrance and Pedestrian Walk
- 6. Doble Hall Interior Renovations – 4th Floor
- 7. East-West Building Conservation & Infrastructure Improvements

IN CONSTRUCTION

- 11. Phone System overhaul

IN PLANNING

- 14. Doble Hall Interior Renovations – 3rd Floor
- 15. Roof Improvements – replace White Hall roof
- 16. Energy Upgrades – air handling for East/West & BMS



Lesley Entrance & Mellen Street



Lesley Entrance & Mellen Street



City Services & Utilities

- Replaced 1896 water main & sewer line
- Replaced Eversource gas main
- 60 to 90+ year old water, sewer & gas lines to buildings
- Supports passage of Cambridge safety and emergency vehicles



Mellen Street

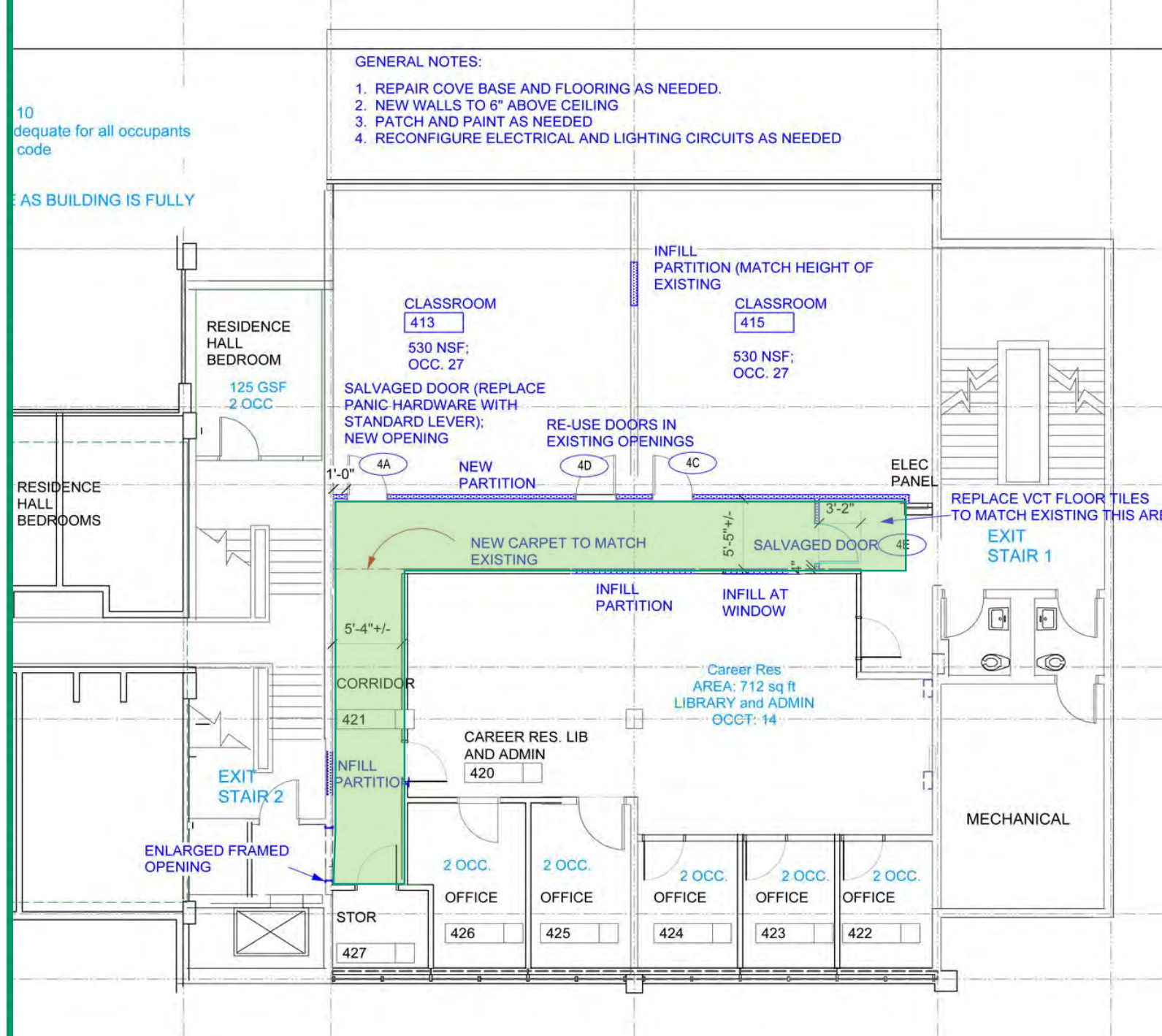


- Raised pedestrian way connects campus
- Quad made ADA accessible via Mellen Street
- Landscape beautification & entrance details
- Increased pervious area – asphalt removed and replaced with pervious pavers, turf and grass

- Create gateway to Lesley University
- Removal of smoking area and “do not enter” sign from pedestrian entrance
- Emphasis shifted from loading dock and parking to arrival

Doble Hall Renovation, 4th Floor

- Improved ADA accessibility
- Improved interior circulation and wayfinding
- Refreshed interior finishes and furniture



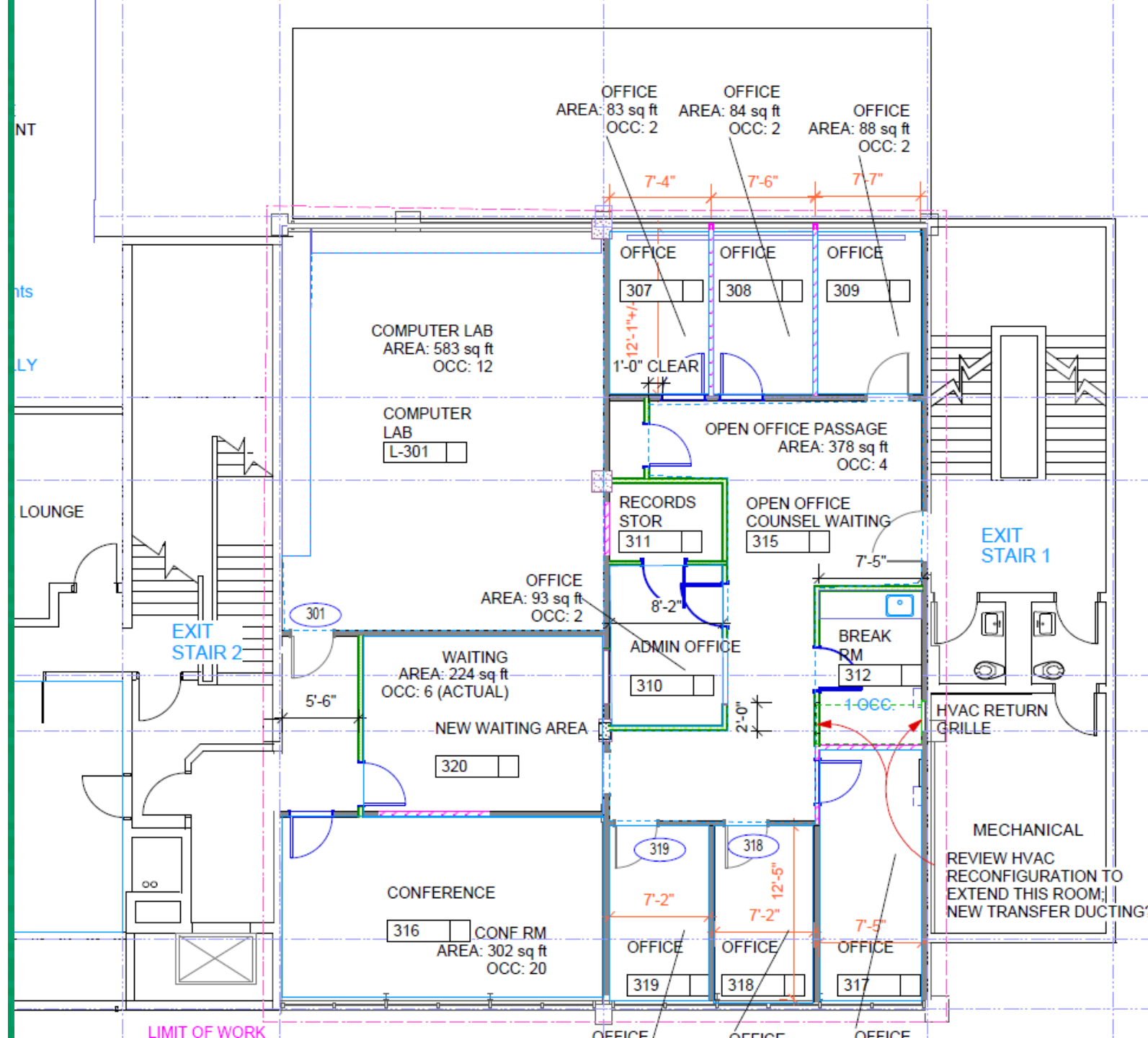
East-West Energy Conservation & Infrastructure Improvements

- Building Management System upgraded
- Obsolete cabling and controllers replaced
- Exterior lighting retrofitted with energy efficient LED fixtures



In Planning

- Doble Hall Interior Renovations – 3rd Floor – improved circulation from elevator
- Roof Improvements – replace White Hall roof
- Energy Upgrades – air handling for East/West & BMS



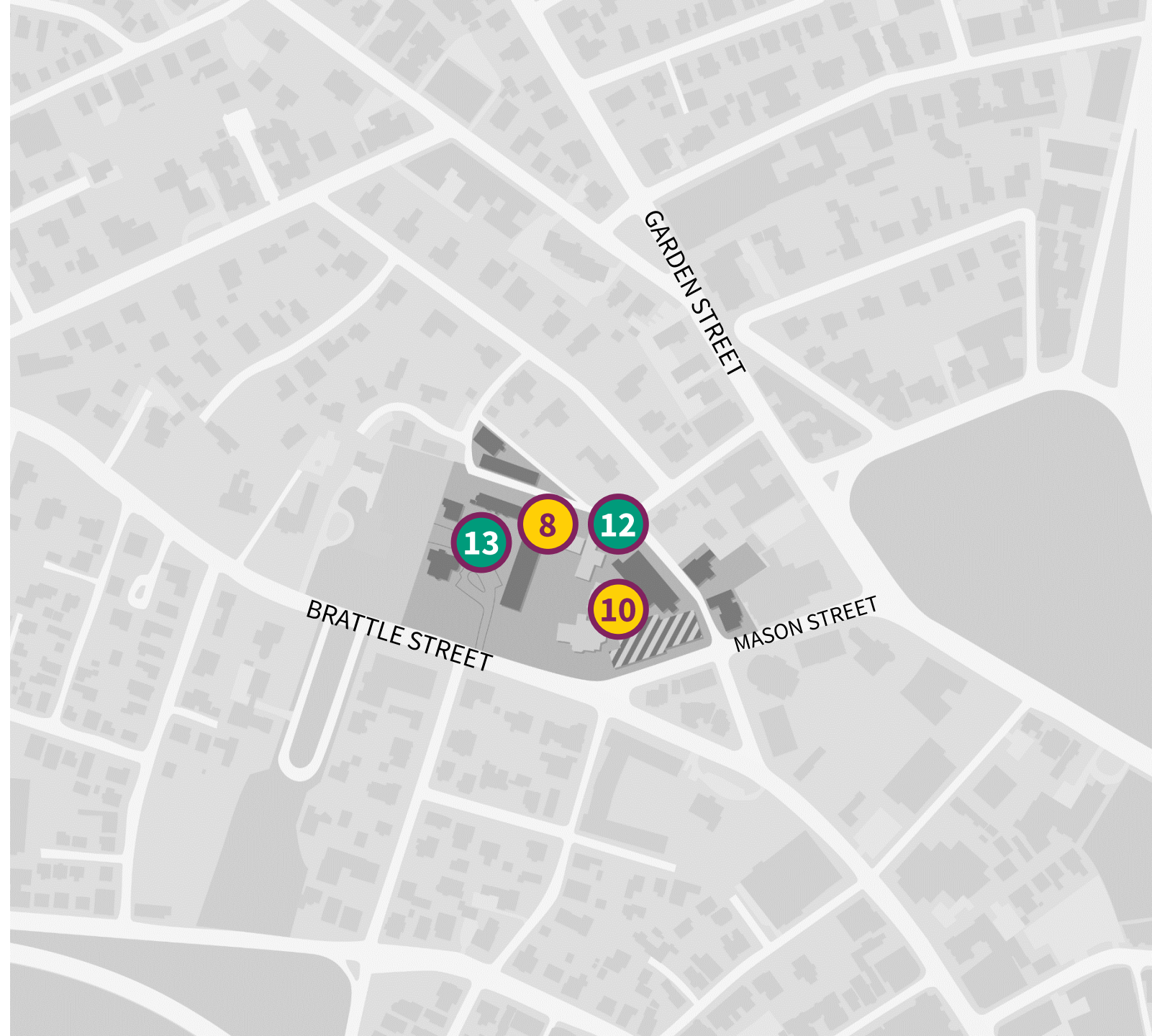
Brattle Projects

■ IN CONSTRUCTION

- 8. Electrical Grid Replacement – Lawrence/Kidder & Rousmaniere
- 10. Public Safety Cameras

■ IN PLANNING

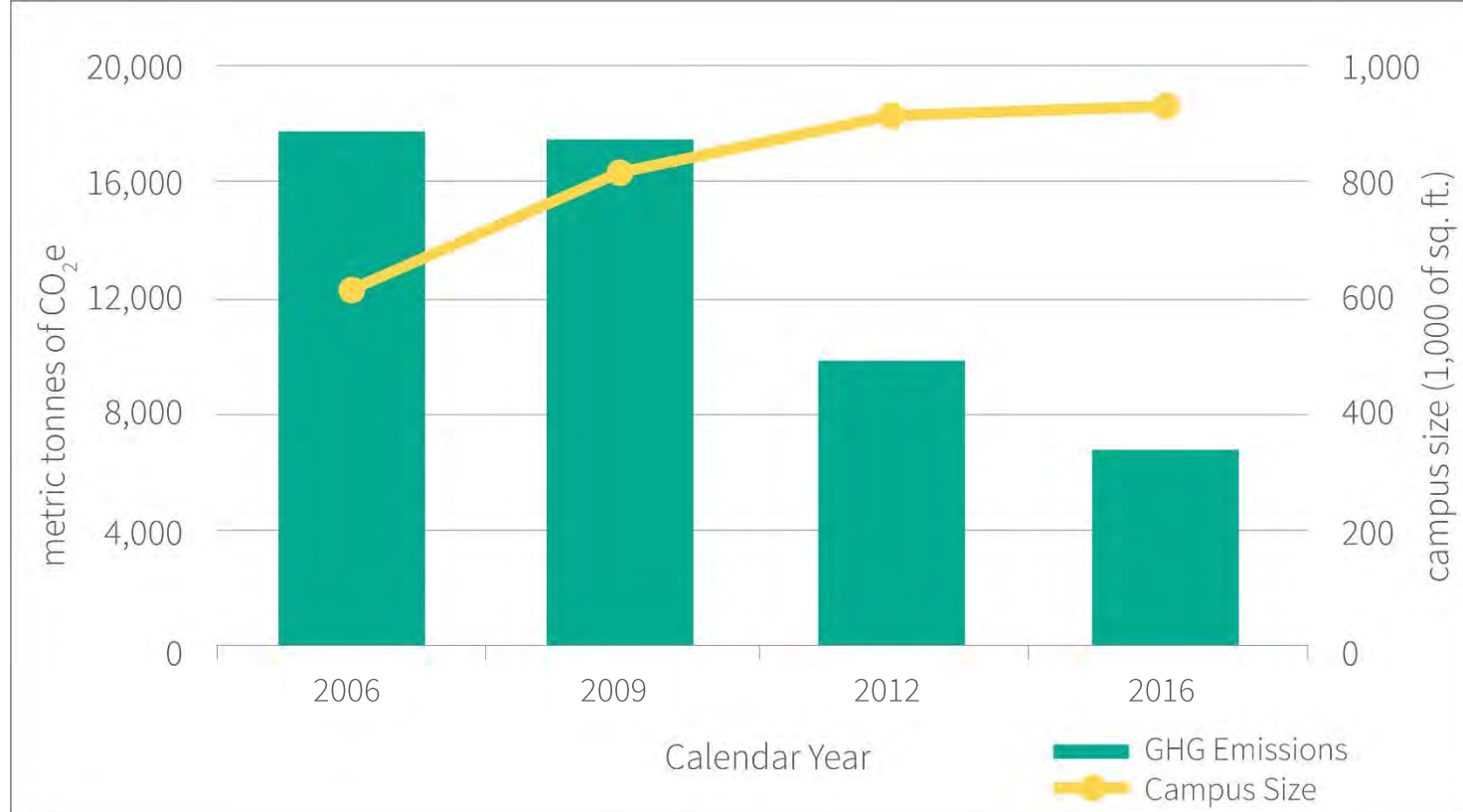
- 12. Electrical Grid Replacement – Washburn & Sherrill
- 13. Community Garden Expansion



Sustainability

Greenhouse Gas Emissions

- Reduced GHG emissions by 62% despite 33% increase in campus square footage since 2006
- Updating Climate Action Plan
- Commuting
 - Goal = 38% SOV
 - 2016 SOV was 34%



Sustainability

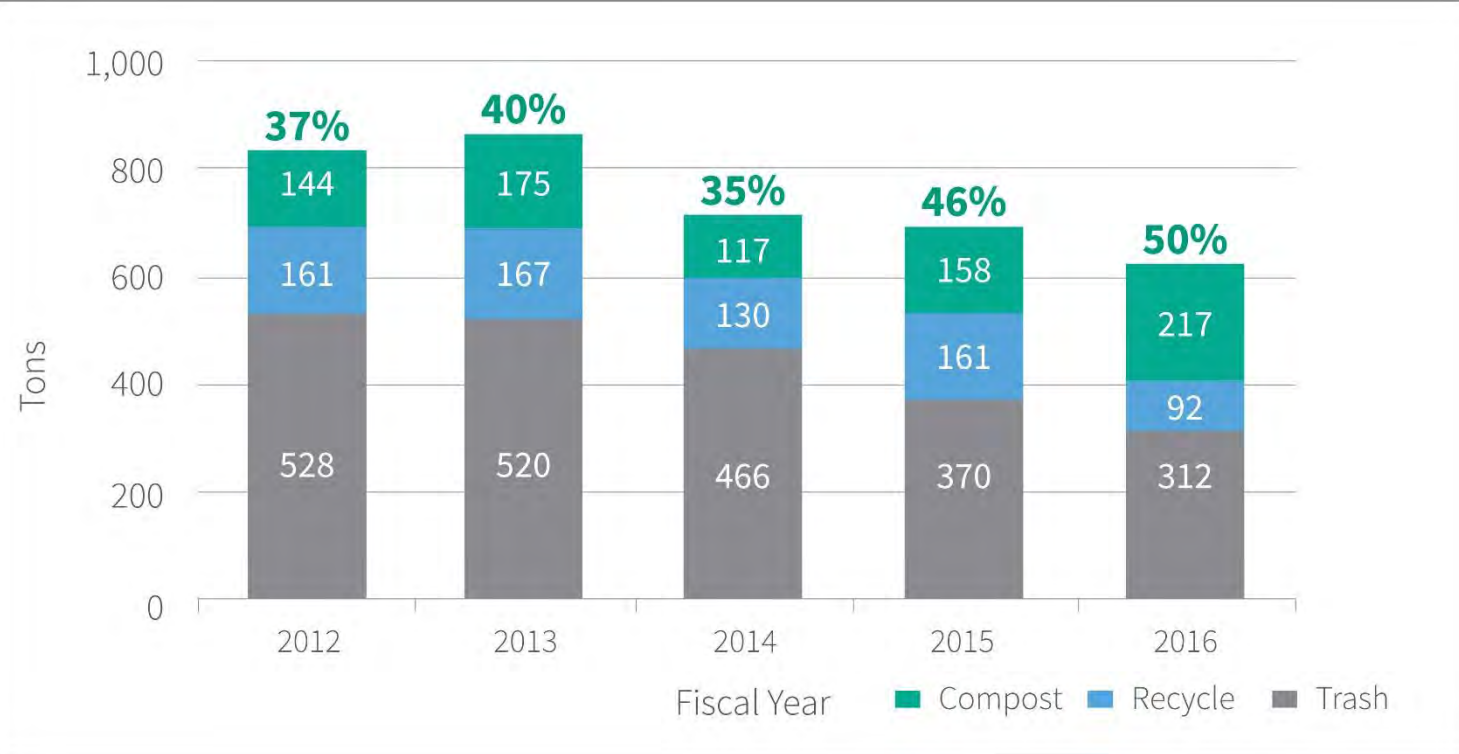
Waste Diversion

Goals

- 50% recycling rate
- Reduction in overall waste

2016 Achievements

- Met 50% recycling rate goal
- 28% decrease in total waste from three years ago
- **EPA Award** for successfully diverting food waste (2nd year in a row)



Sustainability

Stormwater Management

- Increased pervious surface area along Mellen Street
- Mapping all existing conditions to inform future considerations



Sustainability

Bicycle Amenities

- 358 bicycle spaces
- Bicycle repair station on Doble Campus
- Hubway Station at Lunder Arts Center (Porter Campus)



Cambridge Partnerships

LU Makerspace

play, tinker, design & create

- Maker workshop experiences for all Summer Compass teachers, Lesley Interns & students (a CPSD program)
- Open Hours for Educators on the 1st Tuesday of each month
- Technical support to launch a makerspace at the Tobin Montessori School and follow-up curriculum coach with faculty
- Maker activity tables during Community Events orchestrated by Sharlene Yang, the City's STEAM Coordinator



Cambridge Partnerships

Creativity Commons

- Partnership with CPSD, CAC and CCF
- Innovation in Teaching and Learning
- Creative Process as Pedagogy in the classroom: Imagine, Create, Critique, Exhibit



Cambridge Partnerships

Creativity Commons

- **8th Grade Art & Science Project** – students use computers and paint to describe ecosystems.
- **Sidewalk Math** – uses hopscotch-like patterns to teach number sense.
- **Family Engagement Initiative** – hosted district workshops and supported CPSD administrators, families and teachers in designing and implementing the Initiative.



thank you



Images Courtesy of Bruner/Cott,
Photo by Robert Benson

Town Gown
Planning Board
February 7, 2017