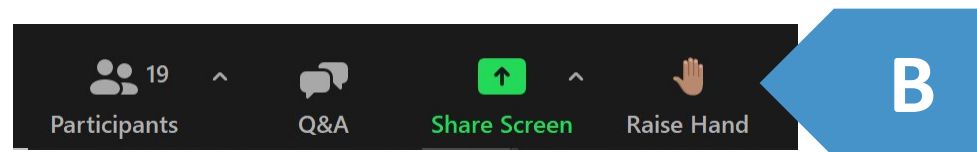
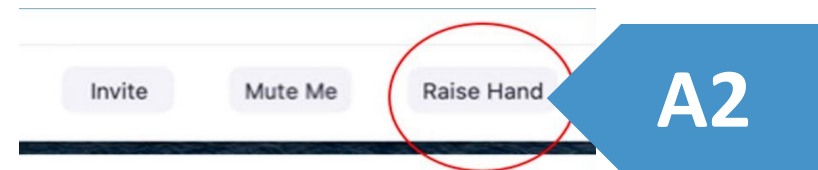
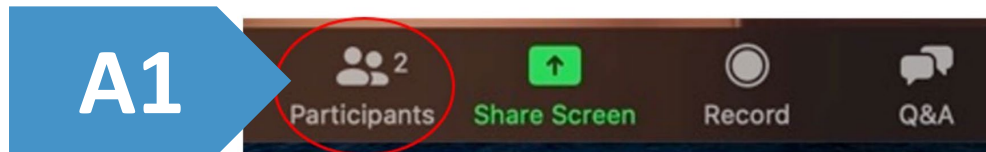


Committee Member Instructions

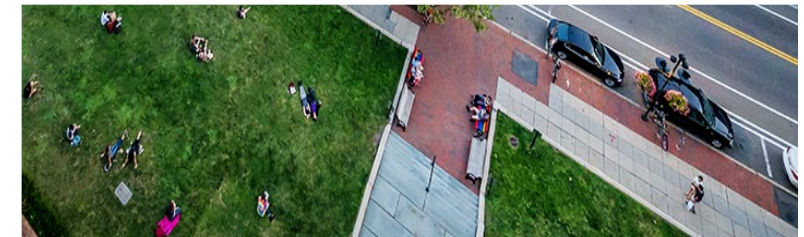
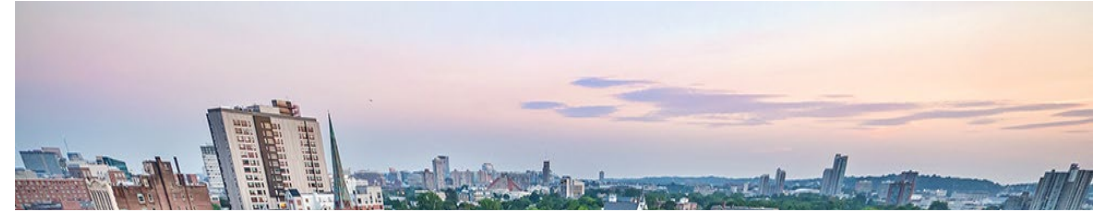
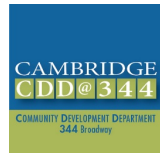
- Committee members may speak and show webcam video
- Use "Raise Hand" button to help manage discussion
 - Located at the bottom of the Participants panel (See A1-2 below) OR at the bottom of the screen (see B below)
 - *9 to Raise Hand by phone
- Please stay muted unless speaking
 - *6 to mute/unmute by phone



City of Cambridge
Community Development Department

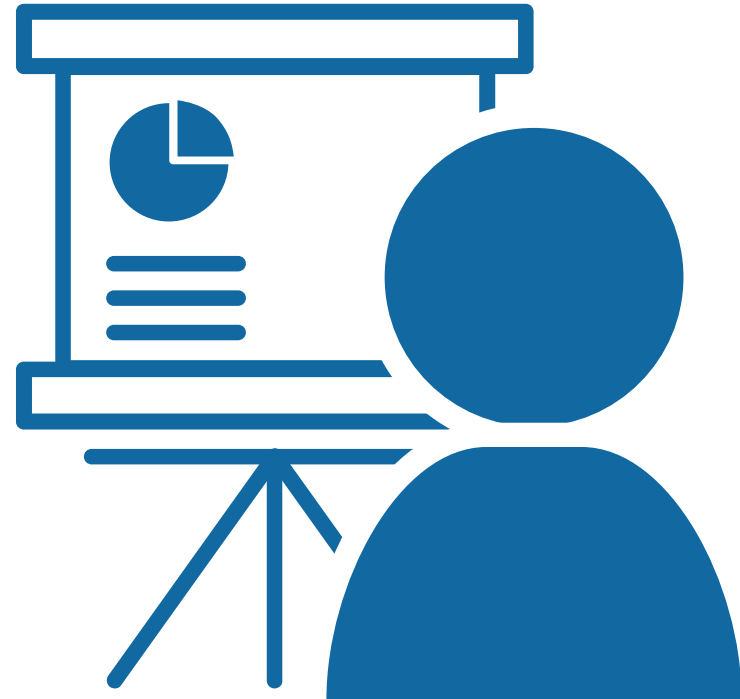
Bicycle Committee Meeting

November 10, 2021



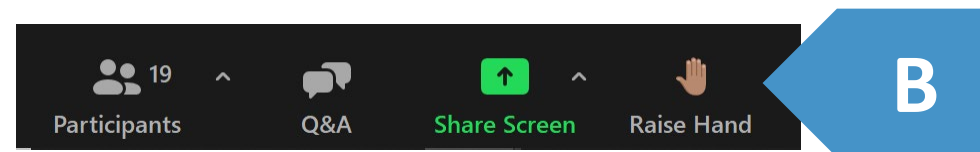
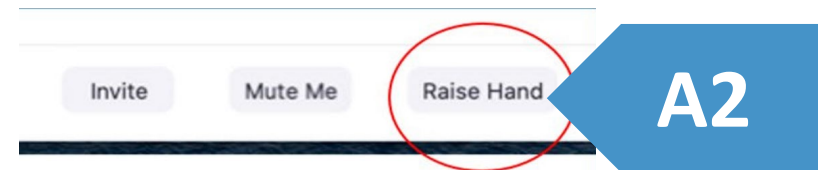
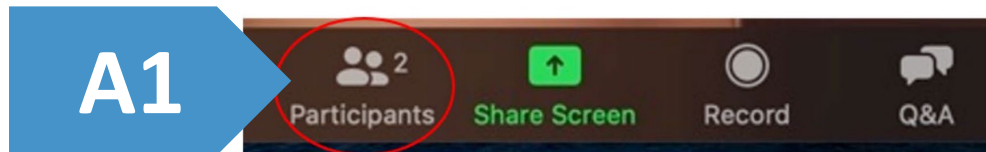
Meeting Agenda

1. Minutes
2. Introductions
3. Outreach: Winter Bike Bash
4. Project Updates
 1. Mass4: Roseland to Waterhouse and Beech to Dudley
 2. Installation of Bus Lanes and Separated Bike Lanes on south Mass Ave
 3. Mass Ave – Dudley St to Alewife Brook Pkwy
 4. Grand Junction Multi Use Pathway
 5. River Street Reconstruction
5. Other Updates
 1. DPW
 2. Other Projects
6. Public Comment



Committee Member Instructions

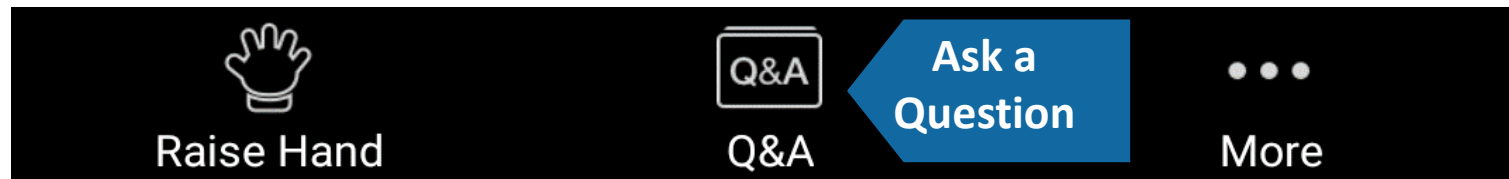
- Committee members may speak and show webcam video
- Use "Raise Hand" button to help manage discussion
 - Located at the bottom of the Participants panel (See A1-2 below) OR at the bottom of the screen (see B below)
 - *9 to Raise Hand by phone
- Please stay muted unless speaking
 - *6 to mute/unmute by phone



Public Comment Instructions

- Members of the public are muted and cannot show webcam video
- Public can write questions or ask for assistance in Q&A window at any time
 - Questions may be submitted at any time and will be addressed as time allows, during discussion/comment periods
- During the Public Comment period, use the "Raise Hand" button to signal you have a question/comment. A staff member will then enable you to unmute yourself.
 - *9 to Raise Hand by phone
 - *6 to Mute/Unmute by phone
- Please be respectful! Participants will be removed for inappropriate behavior

Bottom Panel of
Zoom Screen





Minutes



Winter Bike Bash

Adi Philson, aphilson@cambridgema.gov

BIKE FOR BITES RIDE

A Winter
Biking
Celebration

Hosted by the
Cambridge
Bicycle
Committee



February 29
9am–11am

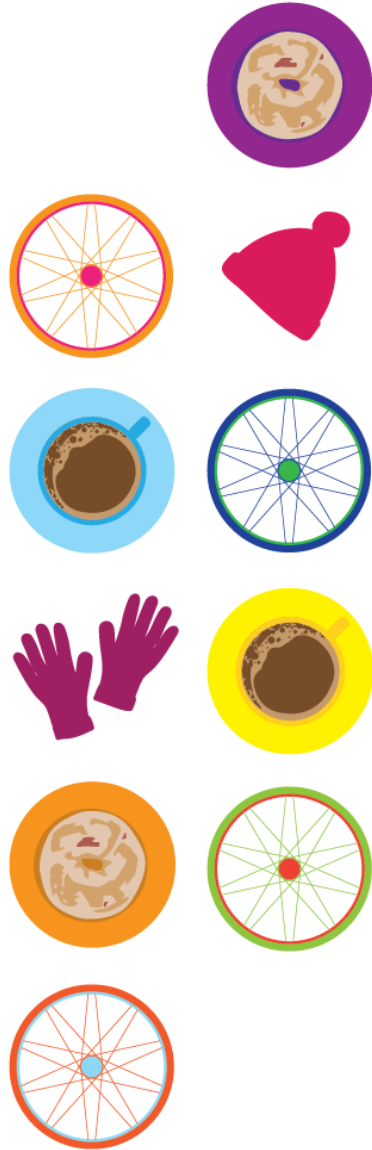
Meetup at 8:30am
Kick off at 9am sharp


*Starts: Alewife Station
Ends: Lamplighter Brewery*

Interested in winter biking and ready to go for a ride? Meet us at Alewife Station to go for a relaxed bike celebration. We will be playing music along the way, and stopping at local bakeries for free pastry bites.

BlueBikes is providing free bikes for this ride! This is the perfect opportunity to join us for a ride if you don't have your own bicycle.

Interested in winter biking but not ready to hit the streets? Meet us at Lamplighter Brewery after the ride to talk all things winter riding!



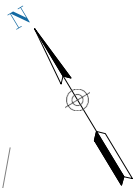


Mass. Ave. Dudley St. – Alewife Brook Parkway

Andreas Wolfe (TP&T)

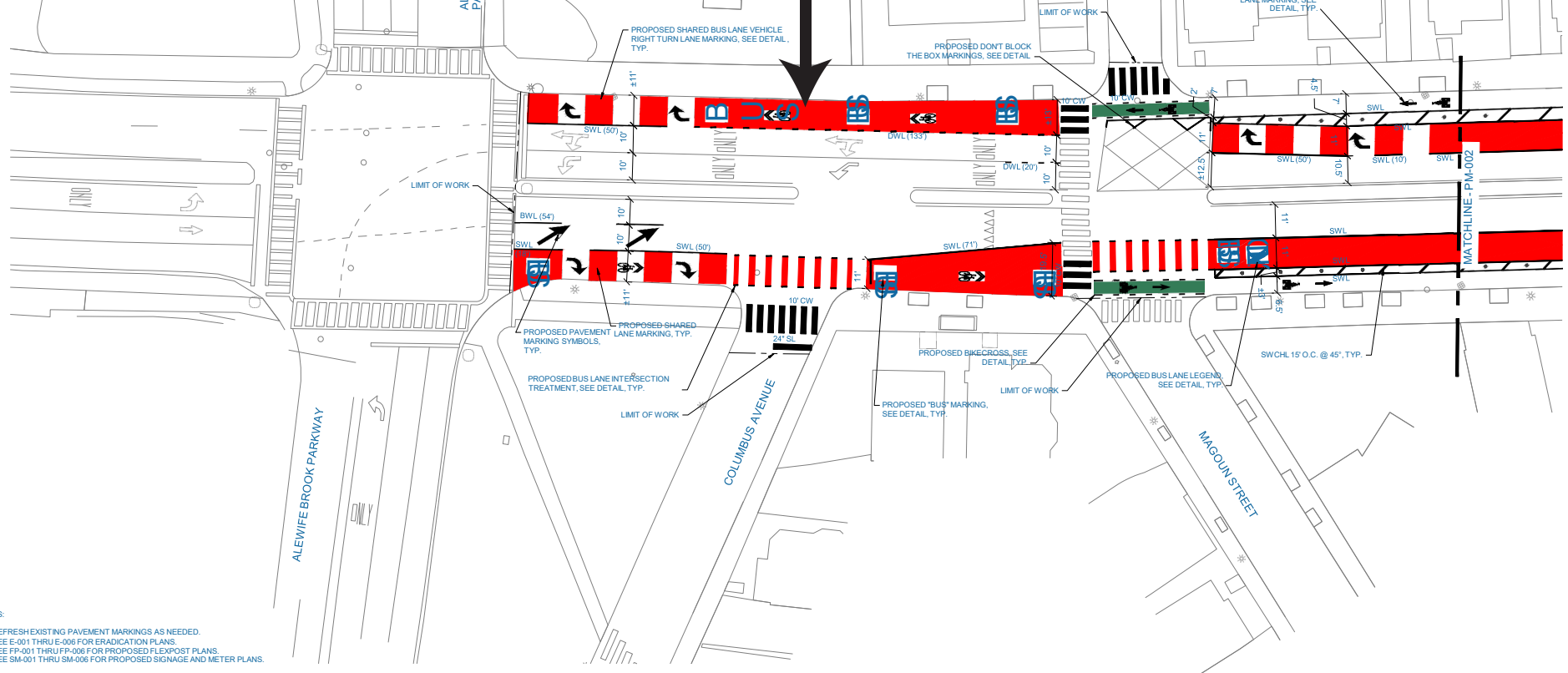
awolfe@cambridgema.gov

Mass Ave – Dudley St. to Alewife Brook Pkwy.



Double-berth bus stop at Gladstone St

- Pursuant a request from the MBTA to improve bus operations
- Allows the stop to accommodate up to two buses at once in the case of bus-bunching
- Better positions bus at signal to enter receiving lane.
- Removes bike lane separation for one block.



- NOTES:
1. REFRESH EXISTING PAVEMENT MARKINGS AS NEEDED.
 2. SEE E-001 THRU E-006 FOR ERADICATION PLANS.
 3. SEE FP-001 THRU FP-006 FOR PROPOSED FLEXPOST PLANS.
 4. SEE SM-001 THRU SM-006 FOR PROPOSED SIGNAGE AND METER PLANS.



PROFESSIONAL CERTIFICATION

I HEREBY CERTIFY THAT THESE PLANS WERE PREPARED OR APPROVED BY ME, AND THAT I AM A DULY LICENSED PROFESSIONAL ENGINEER UNDER THE LAWS OF THE STATE OF [STATE], LICENSE NO. _____, EXPIRATION DATE: _____



REUSE OF DOCUMENTS

ALL DRAWINGS ARE INSTRUMENTS OF PROFESSIONAL SERVICE FOR THIS PROJECT. REUSE OR ALTERATION IS AT THE USER'S SOLE RISK.

DSGN	OC						
DR	OC						
CHK	MLD						
APVD	MLD	NO.	DATE	REVISION	BY	APVD	



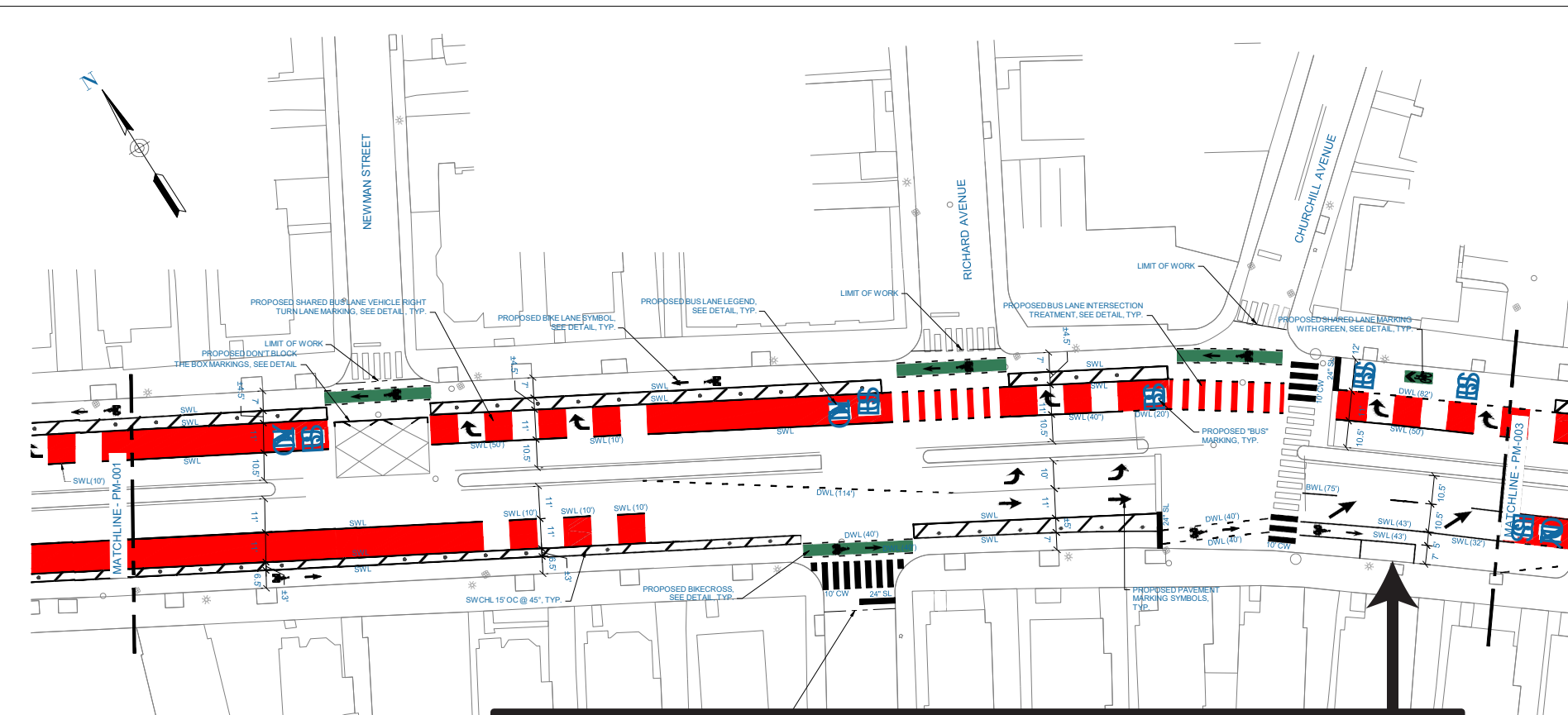
2 OLIVER STREET, SUITE 305
 BOSTON, MA 02109
 PHONE: 617.619.9910
www.tooledesign.com

MASSACHUSETTS AVENUE FROM
 ALEWIFE BROOK PARKWAY TO
 SHEA ROAD - SEPARATED
 BICYCLE LANES

CITY OF CAMBRIDGE
 COMMONWEALTH OF MASSACHUSETTS

PAVEMENT MARKING PLAN

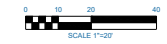
PROJECT NO.	6085.06
DATE	11/05/2021
DRAWING NO.	PM-001
SHEET NO.	11 OF 29



Accessible parking space added (1 space)

- Need for accessible parking discovered during the engagement process
- Will add two to three total parking spaces on Mass Ave
- Removes bike lane separation where accessible parking is proposed
- 5' bike lane remains but without protection

- NOTES:
1. REFRESH EXISTING PAVEMENT MARKINGS AS NEEDED.
 2. SEE E-001 THRU E-006 FOR ERADICATION PLANS.
 3. SEE FP-001 THRU FP-006 FOR PROPOSED FLEXPST PLANS.
 4. SEE SM-001 THRU SM-006 FOR PROPOSED SIGNAGE AND METER PLANS.



PROFESSIONAL CERTIFICATION

I HEREBY CERTIFY THAT THESE PLANS WERE PREPARED OR APPROVED BY ME, AND THAT I AM A DULY LICENSED PROFESSIONAL ENGINEER UNDER THE LAWS OF THE STATE OF [STATE], LICENSE NO. _____, EXPIRATION DATE: _____



REUSE OF DOCUMENTS

ALL DRAWINGS ARE INSTRUMENTS OF PROFESSIONAL SERVICE FOR THIS PROJECT. REUSE OR ALTERATION IS AT THE USER'S SOLE RISK.

DSGN	OC						
DR	OC						
CHK	MLD						
APVD	MLD	NO.	DATE	REVISION	BY	APVD	



2 OLIVER STREET, SUITE 305
 BOSTON, MA 02109
 PHONE: 617.719.9910
 www.tooledesign.com

MASSACHUSETTS AVENUE FROM
 ALEWIFE BROOK PARKWAY TO
 SHEA ROAD - SEPARATED
 BICYCLE LANES

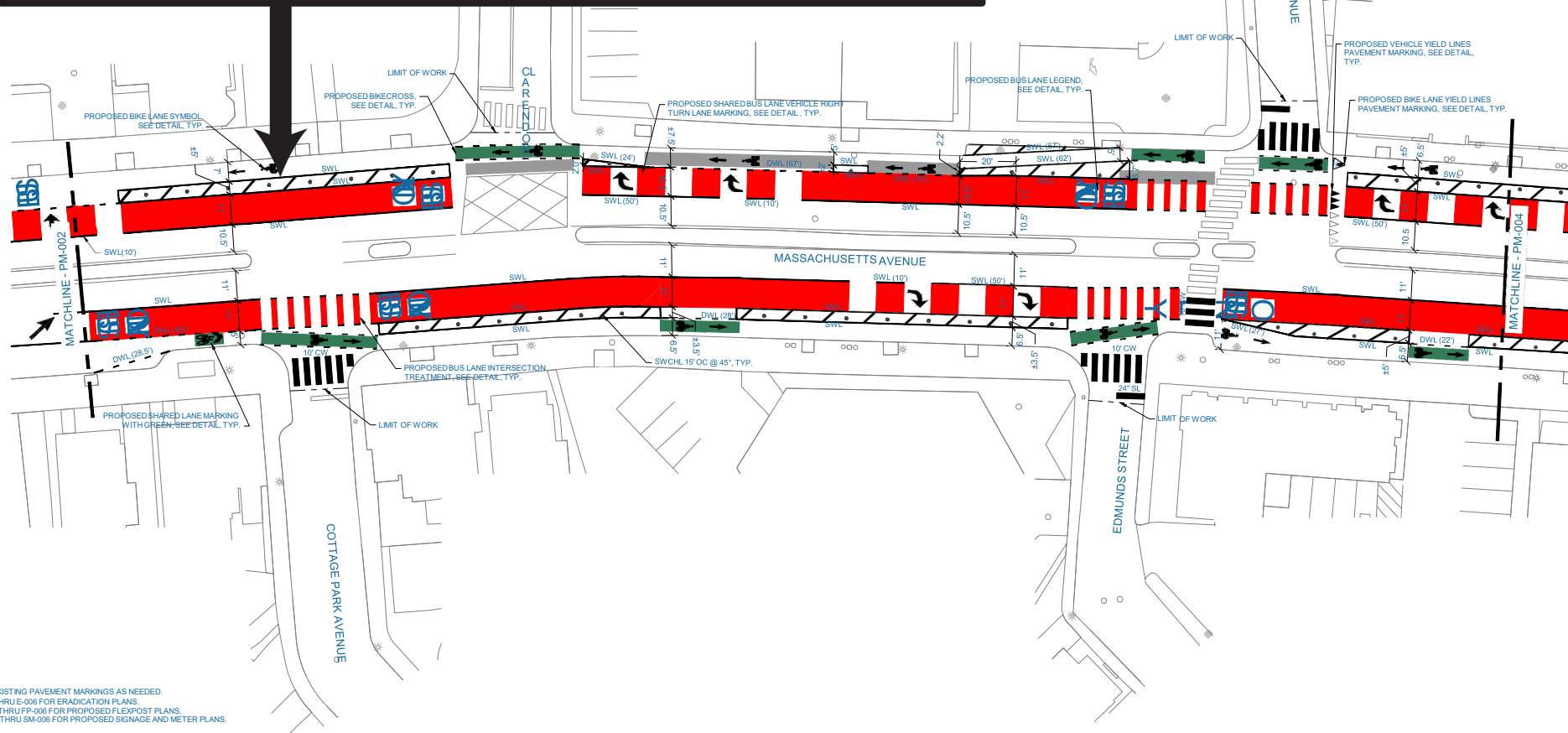
CITY OF CAMBRIDGE
 COMMONWEALTH OF MASSACHUSETTS

PAVEMENT MARKING PLAN

PROJECT NO.	6085.06
DATE	11/05/2021
DRAWING NO.	PM-002
SHEET NO.	12 OF 29

Accessible parking spaces (Under Review, 1-2 spaces)

- Need for accessible parking discovered during the engagement process
- Will add two to three total parking spaces on Mass Ave
- Removes bike lane separation where accessible parking is proposed
- 5' bike lane remains but without protection



- NOTES:
1. REFRESH EXISTING PAVEMENT MARKINGS AS NEEDED.
 2. SEE E-001 THRU E-006 FOR ERADICATION PLANS.
 3. SEE FP-001 THRU FP-006 FOR PROPOSED FLEXPST PLANS.
 4. SEE SM-001 THRU SM-006 FOR PROPOSED SIGNAGE AND METER PLANS.



PROFESSIONAL CERTIFICATION

I HEREBY CERTIFY THAT THESE PLANS WERE PREPARED OR APPROVED BY ME, AND THAT I AM A DULY LICENSED PROFESSIONAL ENGINEER UNDER THE LAWS OF THE STATE OF [STATE], LICENSE NO. _____, EXPIRATION DATE: _____



REUSE OF DOCUMENTS

ALL DRAWINGS ARE INSTRUMENTS OF PROFESSIONAL SERVICE FOR THIS PROJECT. REUSE OR ALTERATION IS AT THE USER'S SOLE RISK.

DSGN	OC					
DR	OC					
CHK	MLD					
APVD	MLD	NO.	DATE	REVISION	BY	APVD

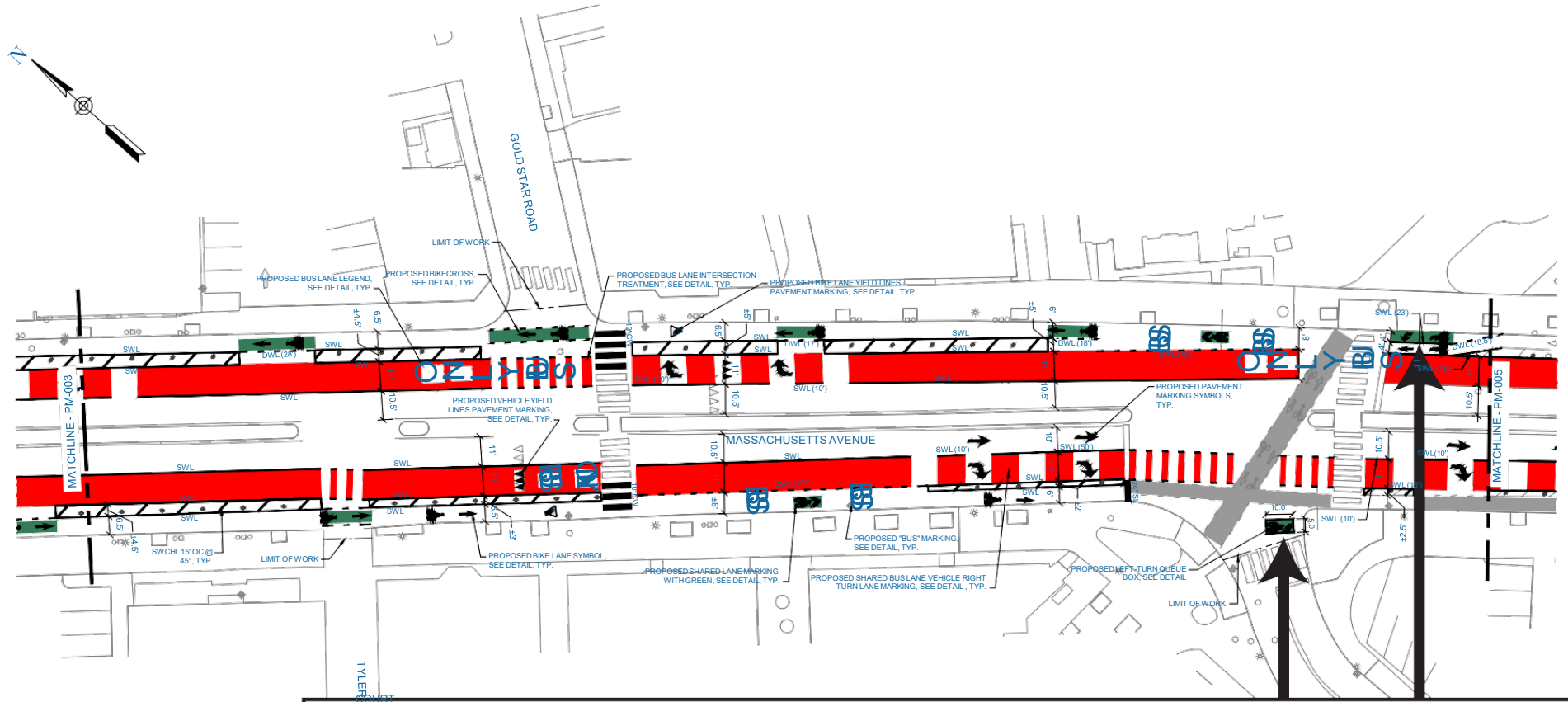


2 OLIVER STREET, SUITE 305
 BOSTON, MA 02109
 PHONE: 617.519.9910
www.tooledesign.com

MASSACHUSETTS AVENUE FROM
 ALEWIFE BROOK PARKWAY TO
 SHEA ROAD - SEPARATED
 BICYCLE LANES
 CITY OF CAMBRIDGE
 COMMONWEALTH OF MASSACHUSETTS

PAVEMENT MARKING PLAN

PROJECT NO.	6085.06
DATE	11/05/2021
DRAWING NO.	PM-003
SHEET NO.	13 OF 29



Improved navigation at Cedar/Harvey/Cameron

- Two-stage turn box added at Cedar St and Mass Ave Southbound to improve turns on to Cameron Ave and Linear Park
- Green turn-box added to improve turns onto Linear Park from Mass Ave Northbound
- New signal timing at Mass Ave and Cedar St.

- NOTES:
1. REFRESH EXISTING PAVEMENT MARKINGS AS NEEDED.
 2. SEE E-001 THRU E-008 FOR ERADICATION PLANS.
 3. SEE FP-001 THRU FP-006 FOR PROPOSED FLEXPOST PLANS.
 4. SEE SM-001 THRU SM-006 FOR PROPOSED SIGNAGE AND METER PLANS.



PROFESSIONAL CERTIFICATION

I HEREBY CERTIFY THAT THESE PLANS WERE PREPARED OR APPROVED BY ME, AND THAT I AM A DULY LICENSED PROFESSIONAL ENGINEER UNDER THE LAWS OF THE STATE OF [STATE], LICENSE NO. _____, EXPIRATION DATE: _____



REUSE OF DOCUMENTS

ALL DRAWINGS ARE INSTRUMENTS OF PROFESSIONAL SERVICE FOR THIS PROJECT. REUSE OR ALTERATION IS AT THE USER'S SOLE RISK.

DSGN	OC						
DR	OC						
CHK	MLD						
APVD	MLD	NO.	DATE	REVISION	BY	APVD	



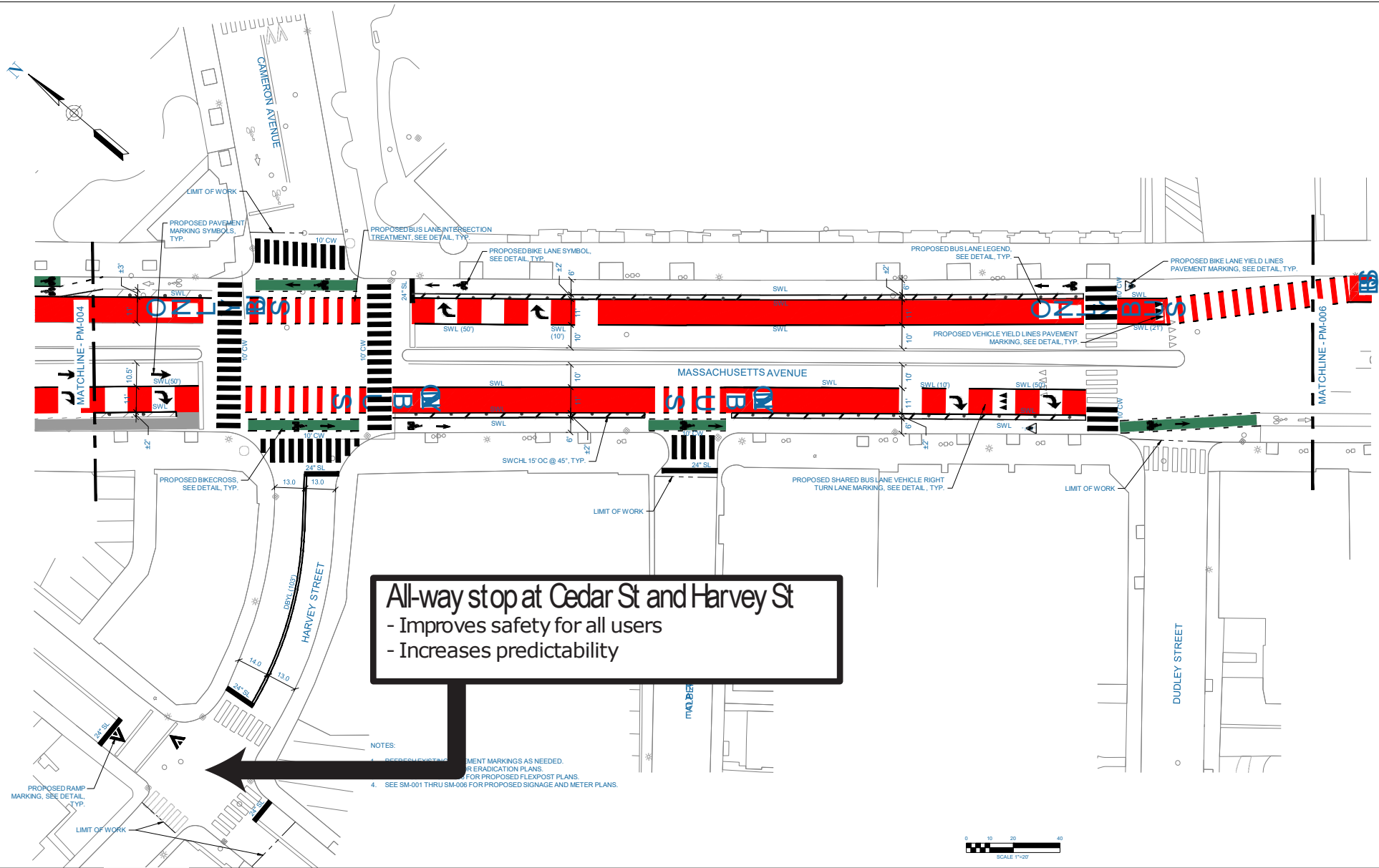
2 OLIVER STREET, SUITE 305
 BOSTON, MA 02109
 PHONE: 617.619.9910
www.tooledesign.com

MASSACHUSETTS AVENUE FROM
 ALEWIFE BROOK PARKWAY TO
 SHEAR ROAD - SEPARATED
 BICYCLE LANES

CITY OF CAMBRIDGE
 COMMONWEALTH OF MASSACHUSETTS

PAVEMENT MARKING PLAN

PROJECT NO.	6085.06
DATE	11/05/2021
DRAWING NO.	PM-004
SHEET NO.	14 OF 29



All-way stop at Cedar St and Harvey St
 - Improves safety for all users
 - Increases predictability

- NOTES:
1. REFER TO EXISTING PAVEMENT MARKINGS AS NEEDED.
 2. REFER TO EXISTING SIGNAGE AND METER PLANS.
 3. REFER TO EXISTING FLEXPOST PLANS.
 4. SEE SM-001 THRU SM-006 FOR PROPOSED SIGNAGE AND METER PLANS.



PROFESSIONAL CERTIFICATION

I HEREBY CERTIFY THAT THESE PLANS WERE PREPARED OR APPROVED BY ME, AND THAT I AM A DULY LICENSED PROFESSIONAL ENGINEER UNDER THE LAWS OF THE STATE OF [STATE], LICENSE NO. _____, EXPIRATION DATE: _____



REUSE OF DOCUMENTS

ALL DRAWINGS ARE INSTRUMENTS OF PROFESSIONAL SERVICE FOR THIS PROJECT. REUSE OR ALTERATION IS AT THE USER'S SOLE RISK.

DSGN	OC						
DR	OC						
CHK	MLD						
APVD	MLD	NO.	DATE	REVISION	BY	APVD	



2 OLIVER STREET, SUITE 305
 BOSTON, MA 02109
 PHONE: 617.519.9910
www.tooledesign.com

MASSACHUSETTS AVENUE FROM ALEWIFE BROOK PARKWAY TO SHEA ROAD - SEPARATED BICYCLE LANES

CITY OF CAMBRIDGE
 COMMONWEALTH OF MASSACHUSETTS

PAVEMENT MARKING PLAN

PROJECT NO.	6085.06
DATE	11/05/2021
DRAWING NO.	PM-005
SHEET NO.	15 OF 29

Key Changes - Mass Ave at Cedar St Signal Timing

Right turns onto Cedar St separated from people biking and walking

Benefits

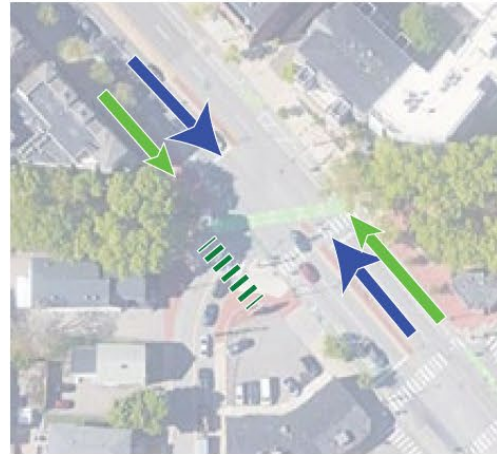
- Reduced risk of a crash between a person biking straight and a person driving turning right
- People driving turn right during separated, dedicated signal phase



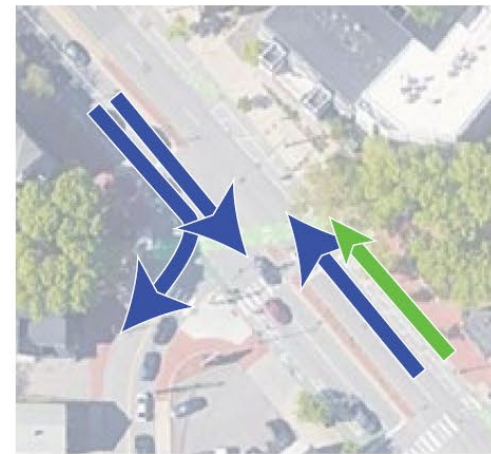
Phase 1



Phase 2



Phase 3



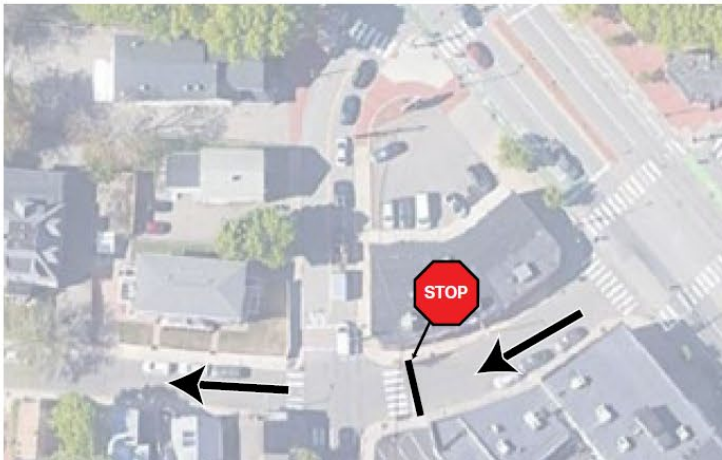
Phase 4



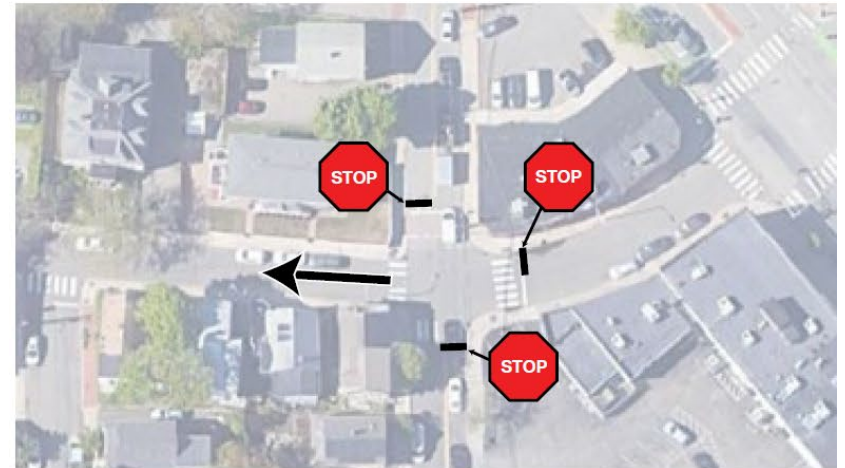
Key Changes - Cedar St at Harvey St - All-Way Stop Benefits

- More clearly defines intersection expectations
- Creates gaps for turning traffic
- Safer crossings for people walking

Existing



Proposed






Mass4: Roseland St. to Waterhouse St. and Beech St. to Dudley St.

<https://www.youtube.com/watch?v=xPThp4jYwG8>

Mass4: Roseland to Waterhouse and Beech to Dudley Streets



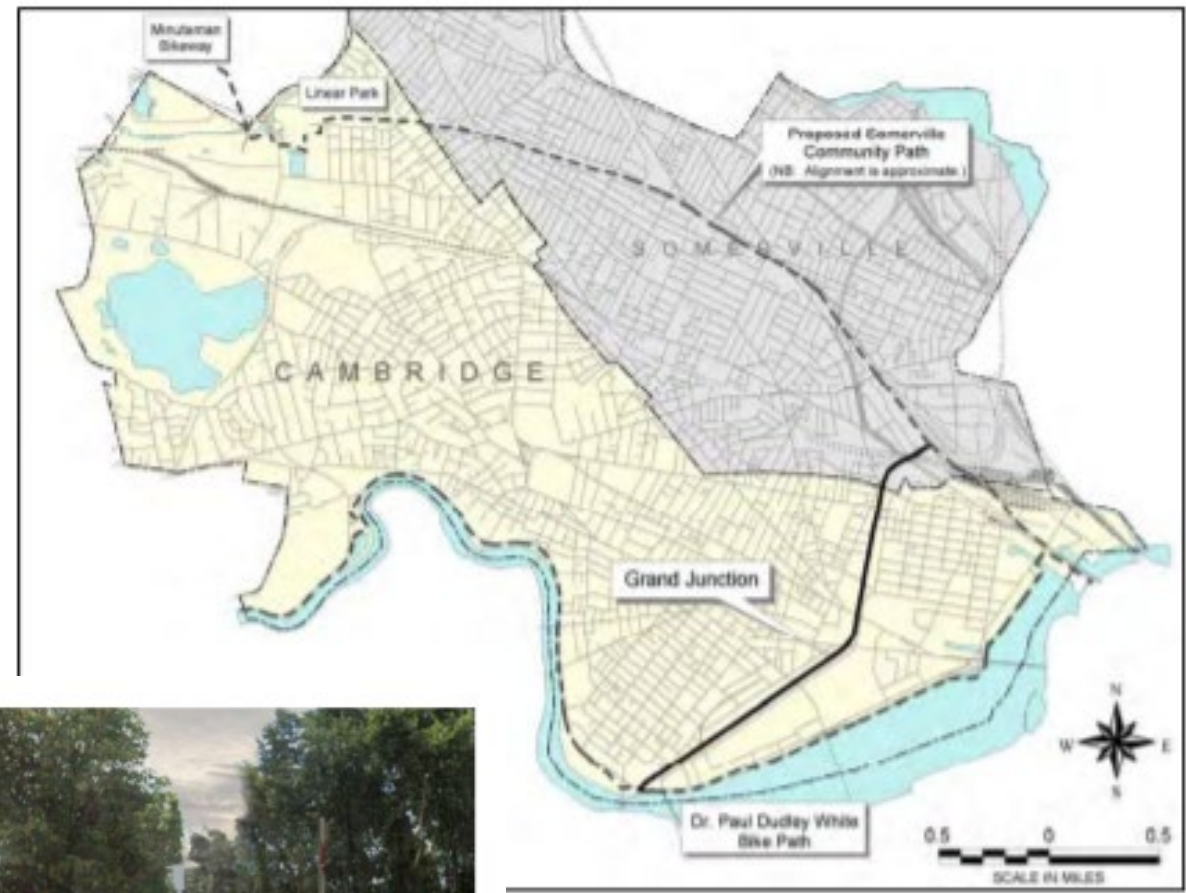
Installation of Bus Lanes and Separated Bike Lanes on South Mass Ave

Installation of Bus Lanes and Separated Bike Lanes on South Mass Ave



Grand Junction Multi Use Path

<https://www.cambridgema.gov/CDD/Projects/Transportation/GrandJunctionPathway>

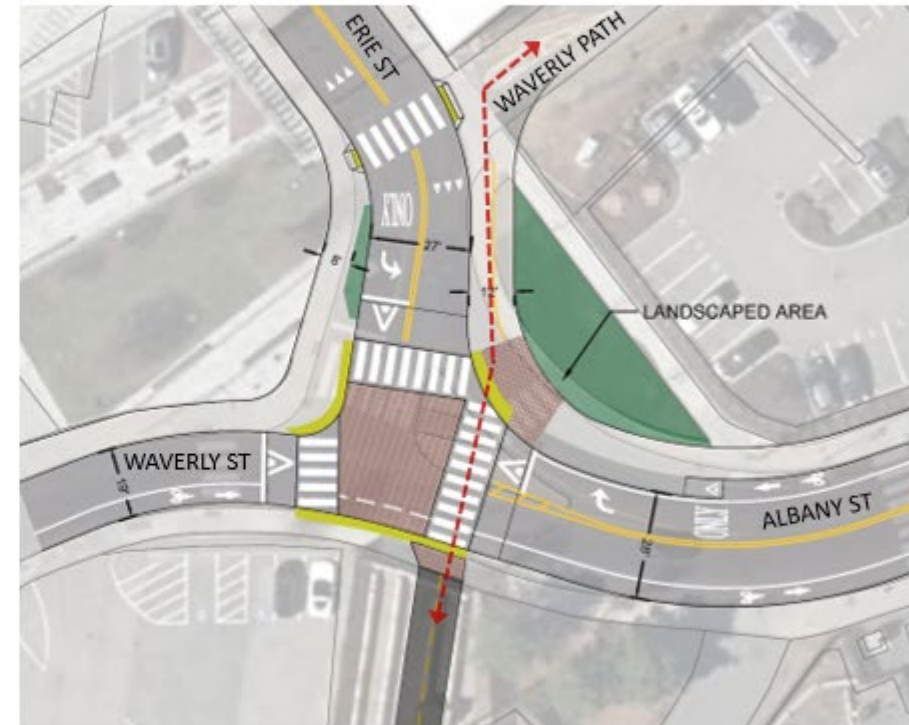


1-1. Vicinity Map

Above: Renderings of proposed Grand Junction Multi-Use Path under MIT Brain & Cognitive Sciences building (left) and at Gore Street/Medford Street (right)

Albany/Erie/Waverly Intersection

- Reconfigure intersection for direct connection to paths
- Proposed Configuration:
 - Raise intersection
 - Remove channelized right turn
 - Create shared use path connection to Waverly Path
 - Add crosswalk from Waverly Path to existing BlueBikes station
 - Expand landscaping

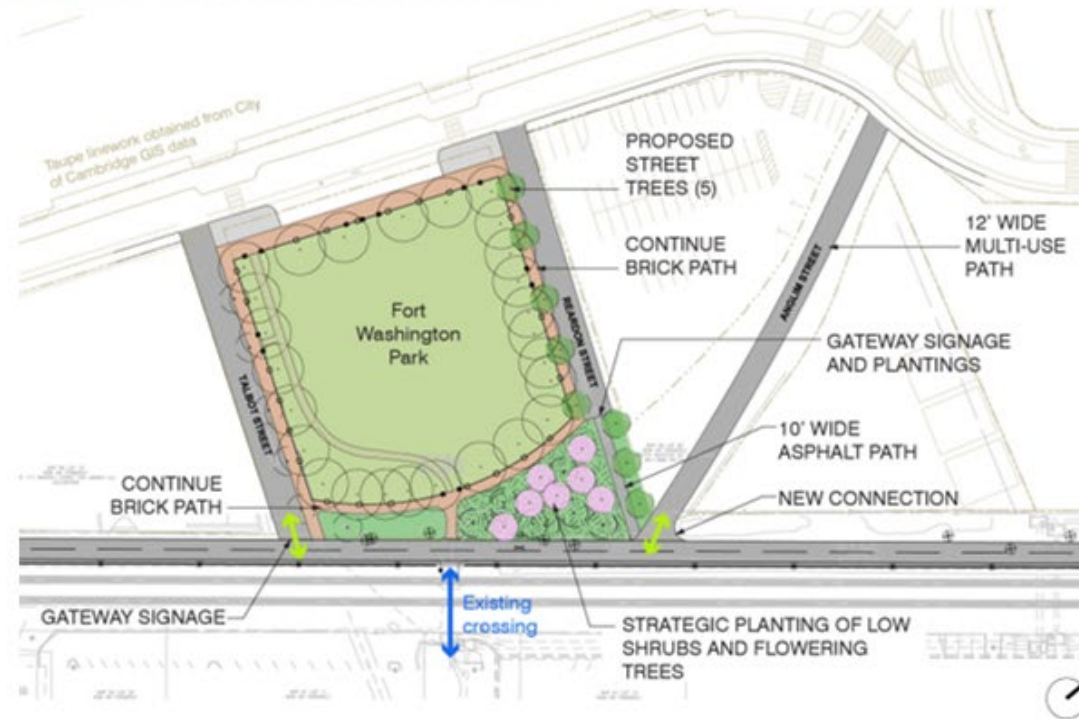


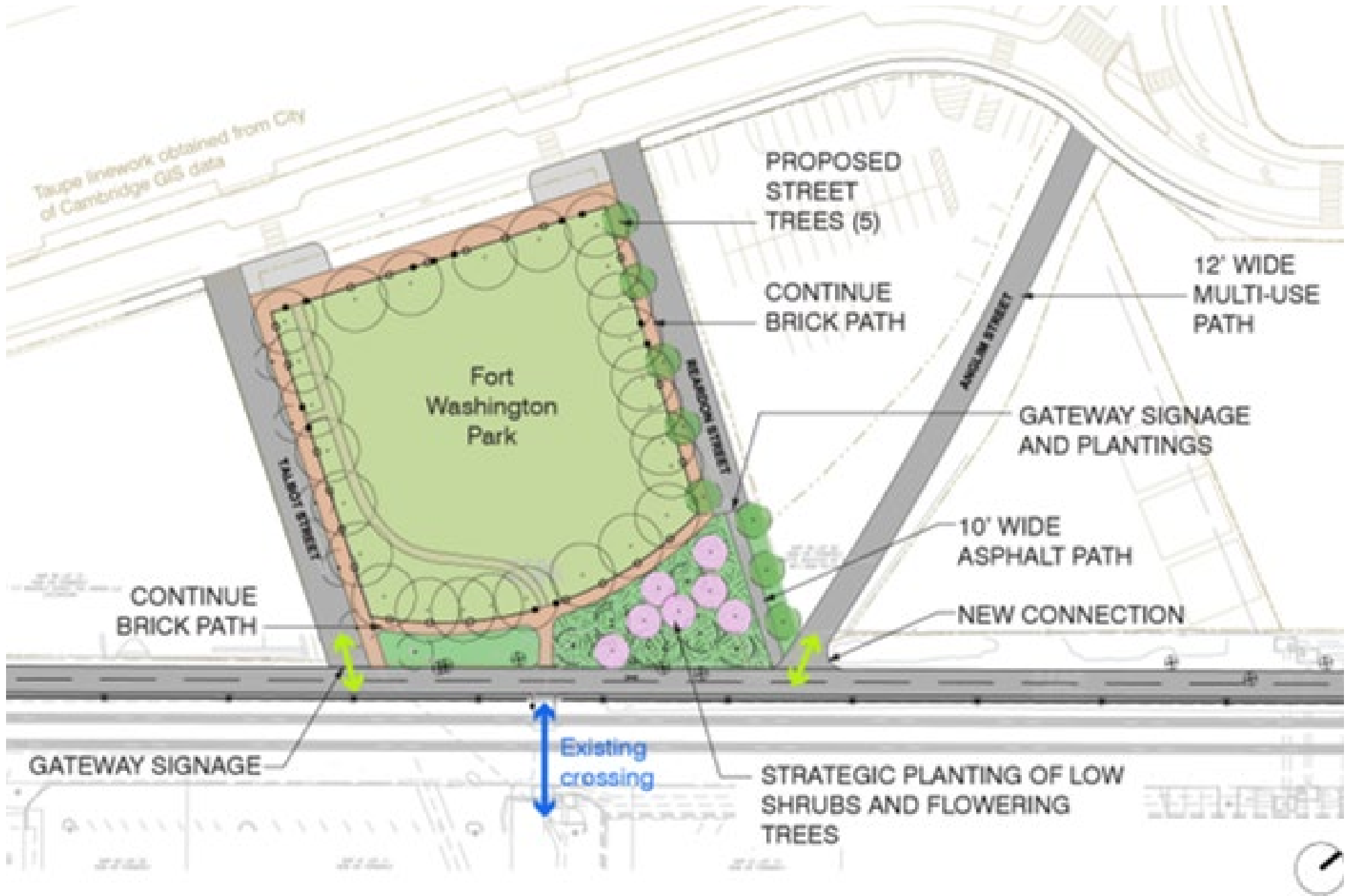
PROPOSED
ANGLIM PATH

Fort Washington Park Connection

Proposed Condition:

- Two new connections at Talbot and Anglim
- Path connecting end of Reardon to MUP
- Gateway signage and new plantings
- Continuation of existing brick paths





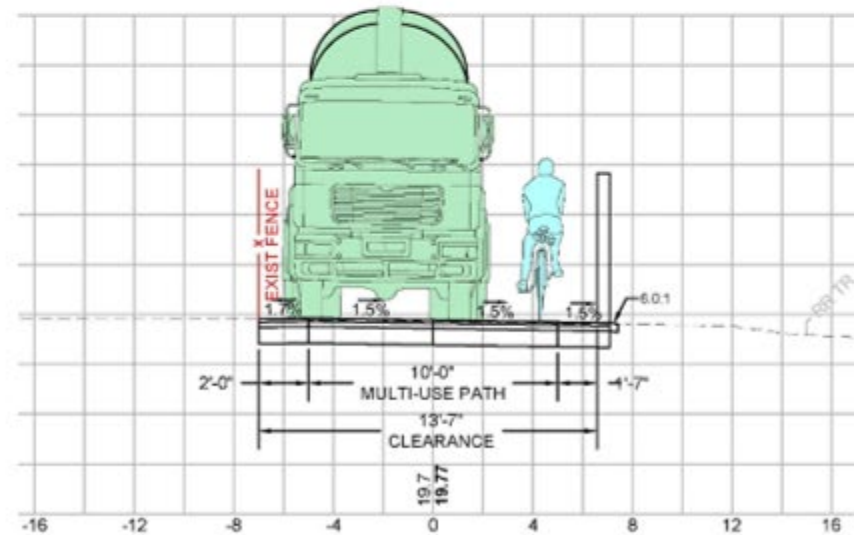
Path Crossing of Cambridge Street



- Provides two-way separated facilities on north side
- Provides mixing zones at path/roadway intersections
- Relocates west crossing closer to path
- Provides enhanced bus stops
- Maintains east crosswalk for access to bus stops and local destinations

Pacific Street and Massachusetts Avenue

- Federal regulations set fence location and offset at nuclear reactor (Bldg NW12A)
- Constrained clearance space between railroad and reactor fences
- Working with MIT to minimize the length of constrained area





River Street Reconstruction

[River Street Reconstruction](#)



Carl Barron Plaza

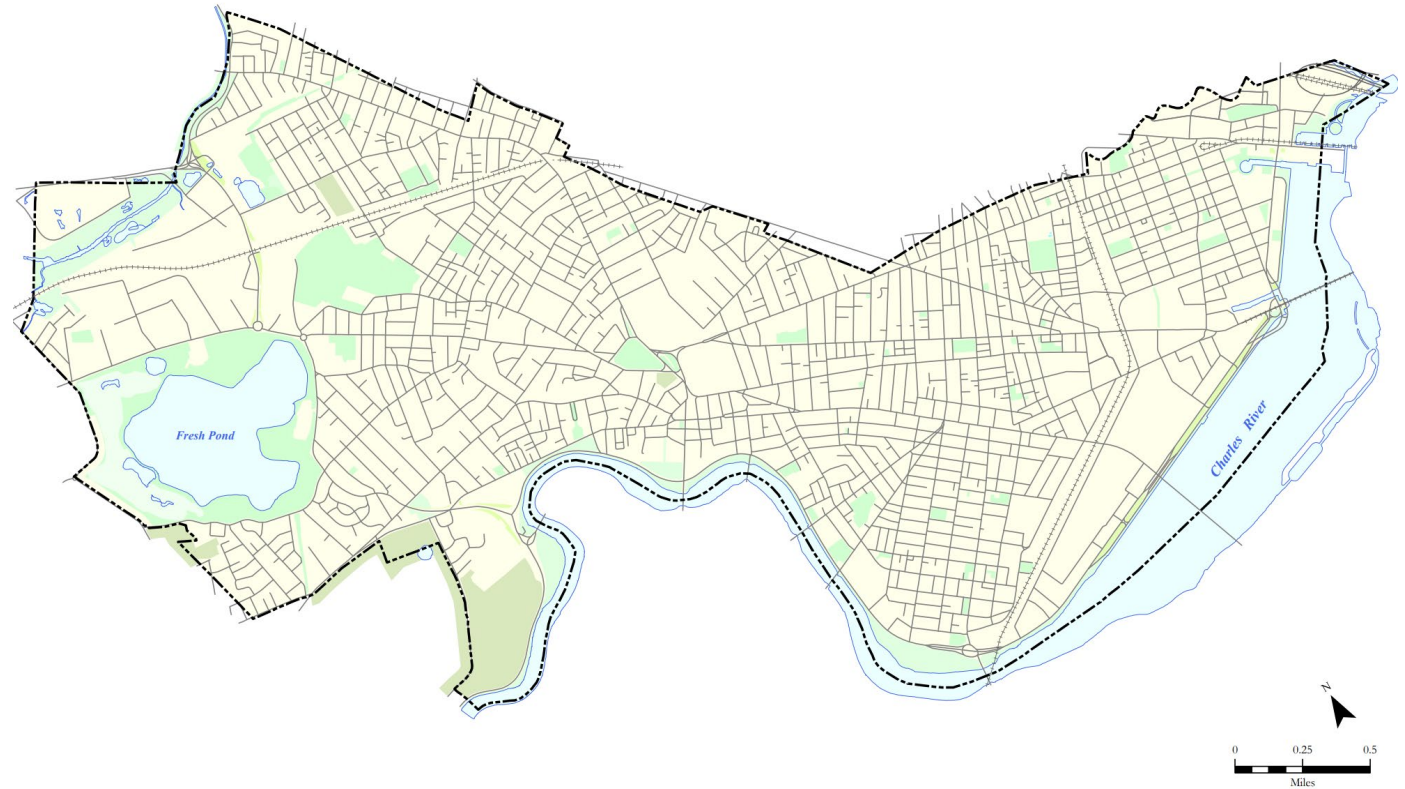


LEGEND

1. Pedestrian scale lighting
2. Drinking water bottle fill stations
3. Bus shelters with real-time information digital displays
4. Seating
5. Architectural ribbon element
6. Separated bicycle facility
7. Trees & planting areas
8. Concrete sidewalk
9. "Flexible plaza space"
10. Space for possible information kiosk
11. Sharps container
12. Bike racks

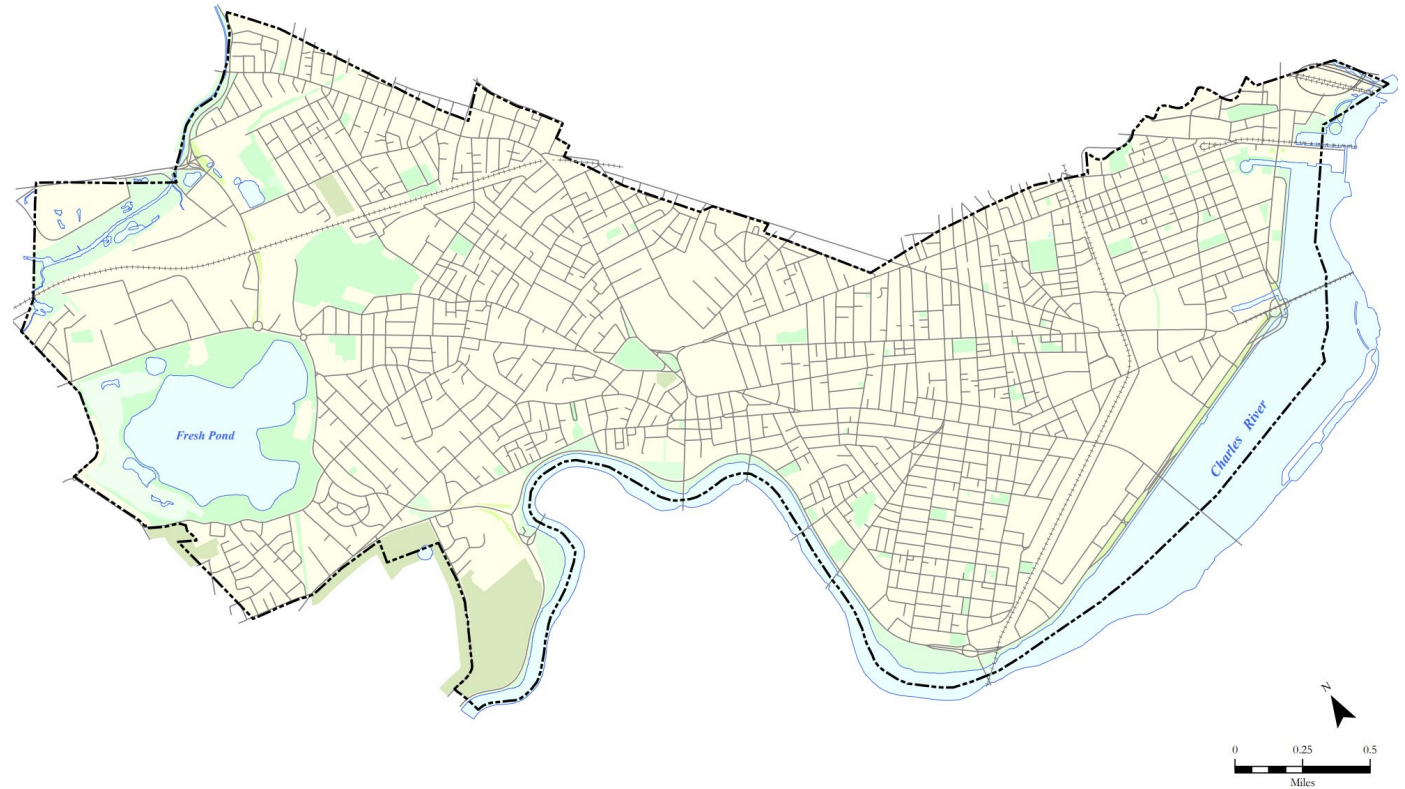
DPW Updates

- On-going construction:
 - Galileo Way between Broadway and Fulkerson is open to vehicle and bicycle traffic. Separated bike lanes are complete. Ped detours will be removed this week. The drainage work on Broadway between Galileo and Ames will continue through June 2022.
 - Broadway between Galileo Way and Ames Street- The Loughery walkway is closed at the intersection of Broadway and Ames Street for drainage work. Pedestrian and bike detours are in place. Bikes are encouraged to use the new separated lanes on Galileo Way. This detour will be in place until June 2022.
 - Main St westbound from Broad Canal Way to Third St- Paving complete. Pavement markings next week.
 - Franklin St from Landsdowne St to River St. – Paving is complete. Sidewalk work will continue as weather allows.
 - DPW Maintenance Paving- work will resume in the Spring.



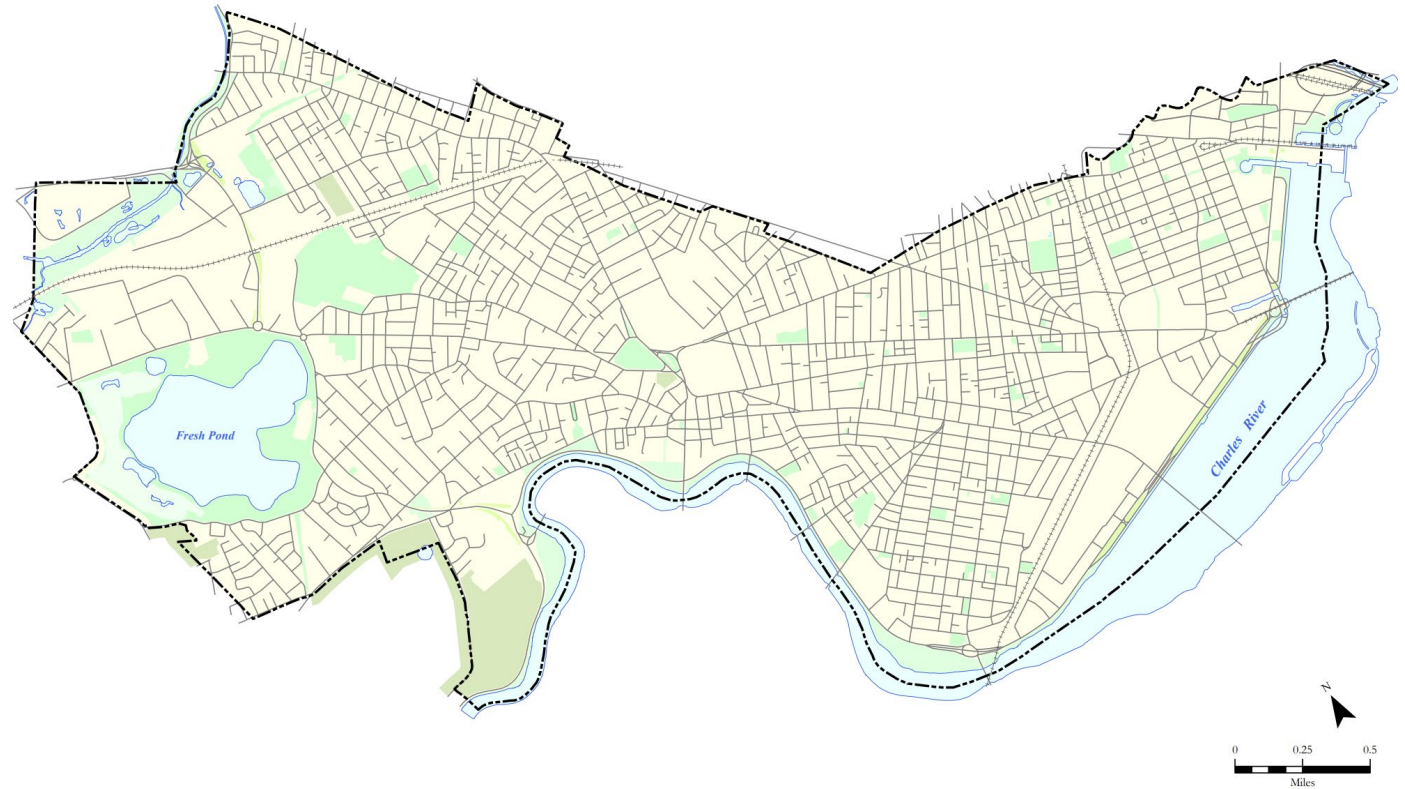
DPW Updates

- Port Infrastructure Project- design and community engagement on-going
- River St- preparing bid docs
- Willard St – preparing bid docs
- Inman Sq- full depth roadway, curb install and sidewalks
- MassAve4 separated bike lane project- design has started
- Gore Street- water main install and full depth roadway construction; project will continue until Fall 2022



DPW Updates

- Chapter 90, Contract 24 – preparing bid docs.
 - Park Ave. – Huron to Holworthy
 - Walden St.- Sherman to Garden
 - Webster St. – Lincoln to Hampshire
 - Chestnut St. – Sidney to Pleasant
 - Dodge St.- Western Ave to Callendar
 - Huron at Cushing Plaza (green infrastructure)
- Chapter 90, Contract 25- design and community engagement.
Community presentations and meeting dates are available on DPW web page.
 - Green St- Pearl to Landsdowne
 - Maple St- Broadway to Cambridge
 - Centre St – Dana to Hancock
 - Montgomery St – Harvey to Rindge
 - Sciarappa St- Charles to Winter



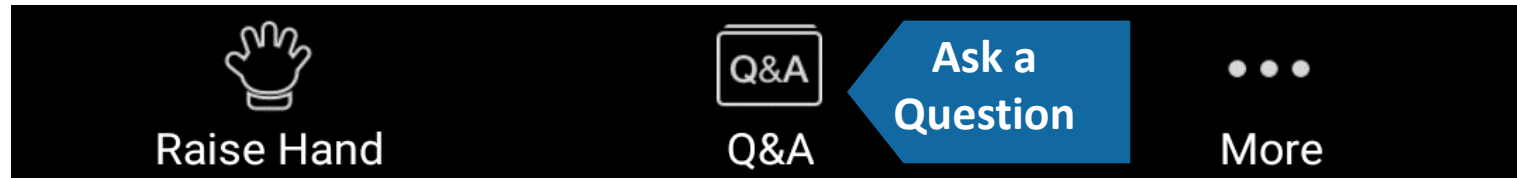


Public comment

Public Comment Instructions

- Use the "Raise Hand" button to signal you have a question/comment. A staff member will then enable you to unmute yourself.
 - *9 to Raise Hand by phone
 - *6 to Mute/Unmute by phone
- Questions can also be submitted using the Q&A button.

Bottom Panel of
Zoom Screen



Select Upcoming Meetings and Events

Our Cambridge Street Planning Study Pop-Ups

East Cambridge Savings Bank (Inman Square), 1310 Cambridge Street

Saturday, November 13, 2021 11:00 AM – 1:00 PM

Two pop up events will be held to gather feedback about how the public relates to Cambridge Street, what makes it special, and what residents think about the future of the corridor.

Mass Ave Improvements Pop Up Community Meetings

- Cambridge Common, Waterhouse and Mass Ave Saturday, November 13, 2021 10:00 AM – 12:00 PM
- St. John's Church Parking Lot, 2254 Mass Ave Saturday, November 13, 2021 2:00 PM – 4:00 PM
- St. John's Church Parking Lot, 2254 Mass Ave Monday, November 15, 2021 3:00 PM – 6:00 PM
- Cambridge Common, Waterhouse and Mass Ave Tuesday, November 16, 2021 3:00 PM – 6:00 PM

River Street Working Group Meeting 12

Wednesday, November 17, 2021 5:30 PM – 7:00 PM

Meeting to review an updated design for Carl Barron Plaza. A flyer for the meeting of the working group is available [here](#), a calendar link with registration and contact information is available [here](#), and further information about the River Street Reconstruction is available on the [project website](#).

Our Cambridge Street Public Meeting

Wednesday, December 8, 2021 6:00 PM – 7:00 PM

In addition to two in-person "pop-up" public meetings, the City will also be holding a virtual public meeting. A link to register is available [here](#).



Other Announcements



Thank You