

For more information <http://cambridgema.gov/grandjunction>

THE GRAND JUNCTION PATH

PROJECT OVERVIEW

1. WHAT IS THE GJ PATH?
2. WHY IS IT IMPORTANT?
3. NEXT STEPS?



For more information, visit:
cambridgema.gov/grandjunction
Contact: Jeff Rosenblum
jrosenblum@cambridgema.gov
617-349-4615

Cambridge Community Development Department

Rendering courtesy of the Friends of the Grand Junction Path

THE GRAND JUNCTION PATH

1. WHAT IS THE GJ PATH?
2. WHY IS IT IMPORTANT?
3. NEXT STEPS?



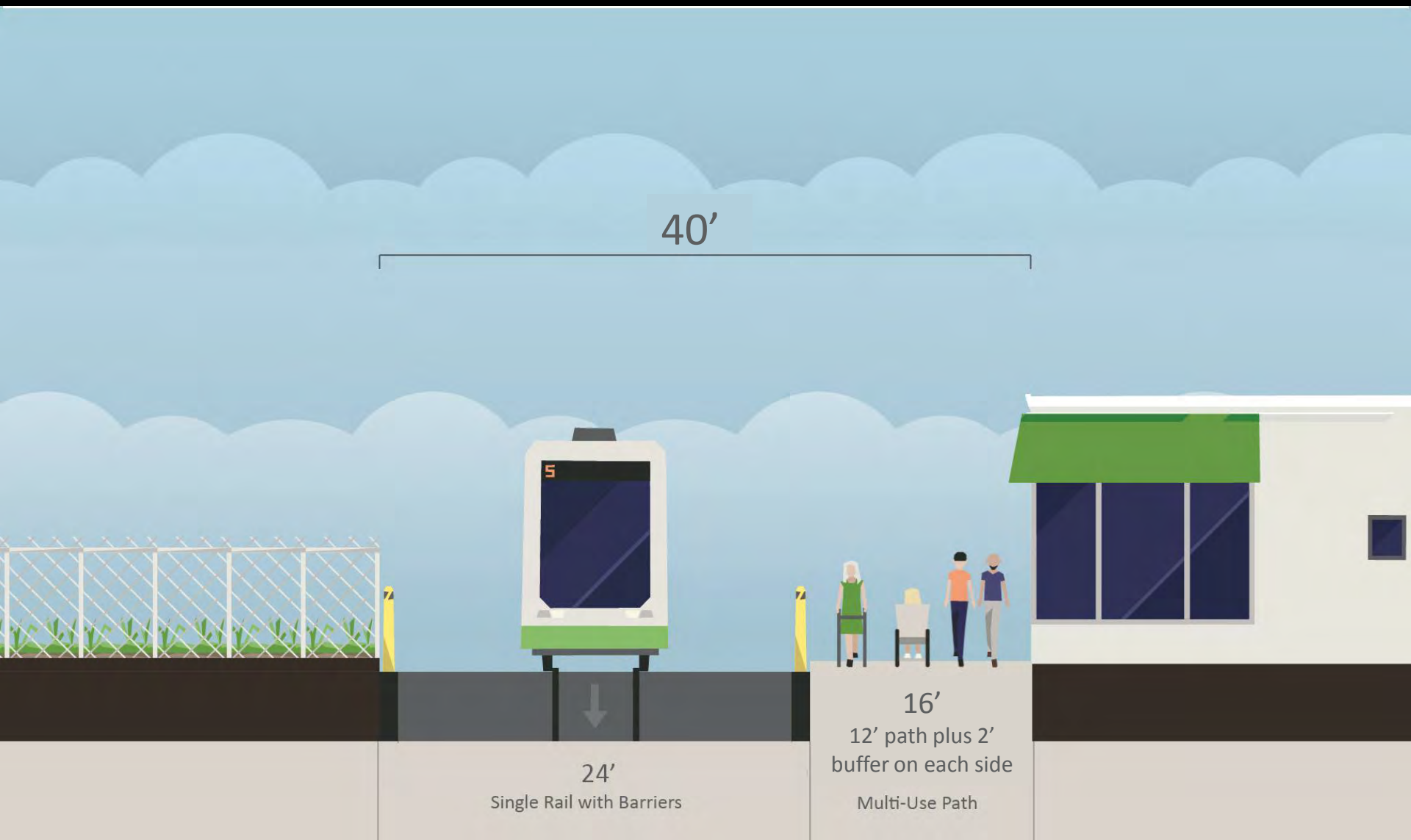
For more information, visit:
cambridgema.gov/grandjunction
Contact: Jeff Rosenblum
jrosenblum@cambridgema.gov
617-349-4615

Cambridge Community Development Department

Rendering courtesy of the Friends of the Grand Junction Path



Graphic courtesy of the Friends of the Grand Junction Path

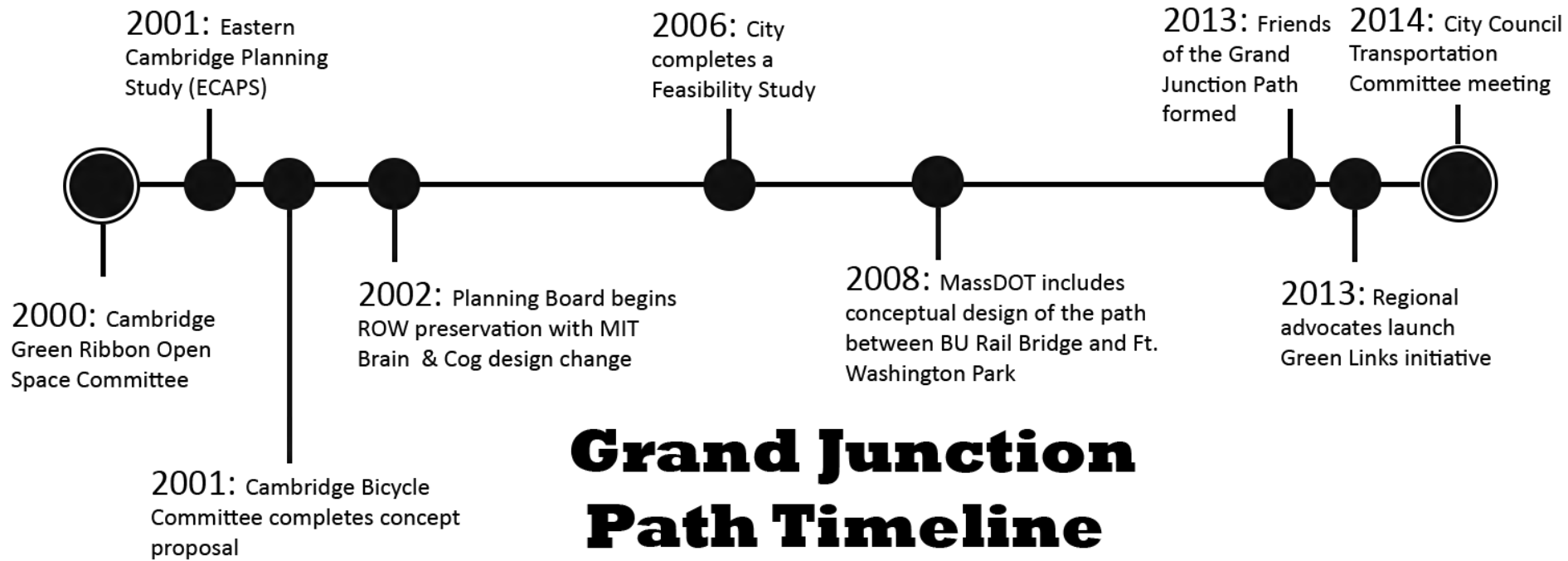


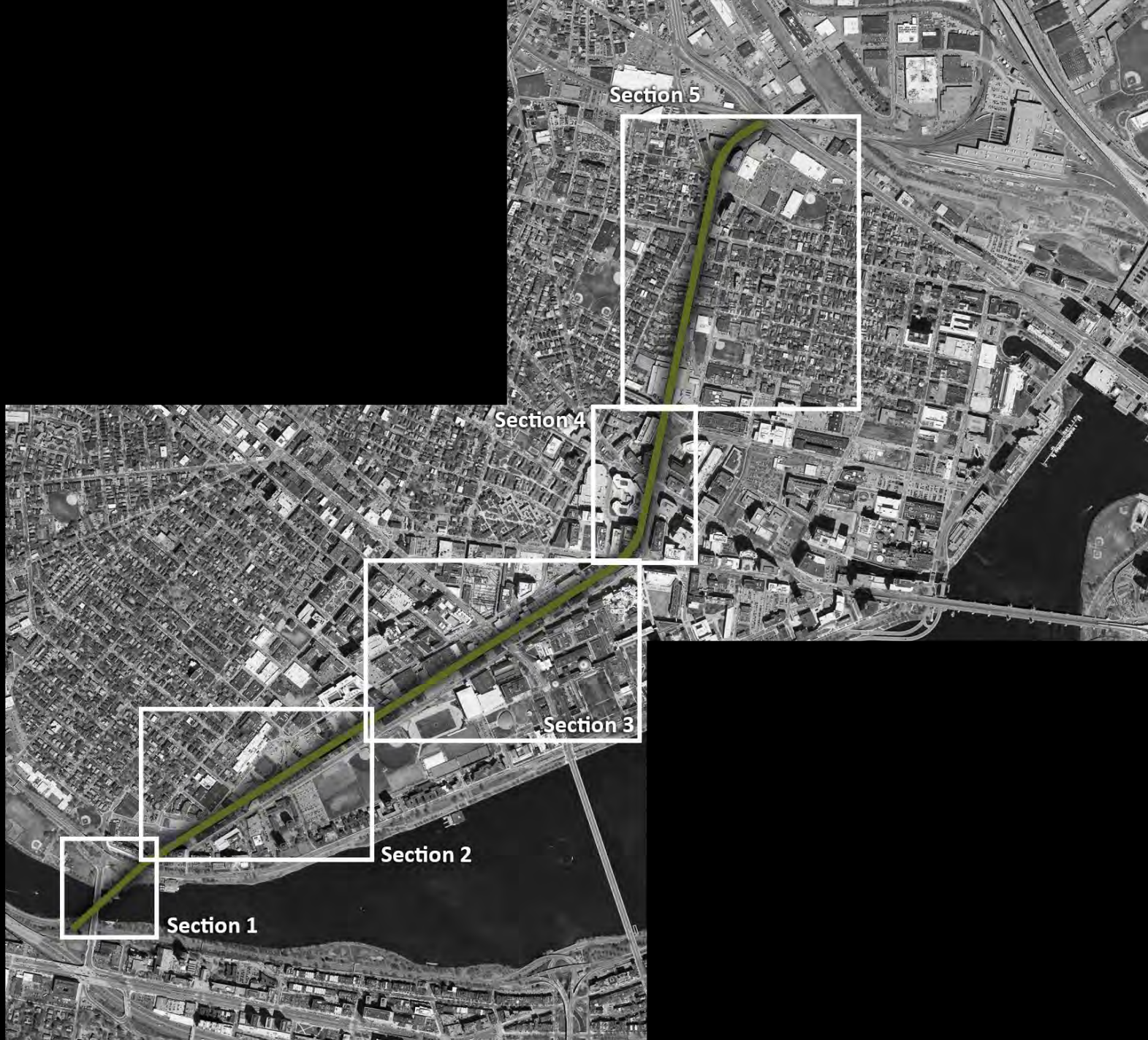
Desirable Dimensions for Grand Junction Path with Existing Rail Operations (Note: there are pinch points w/ smaller dimensions needed.)

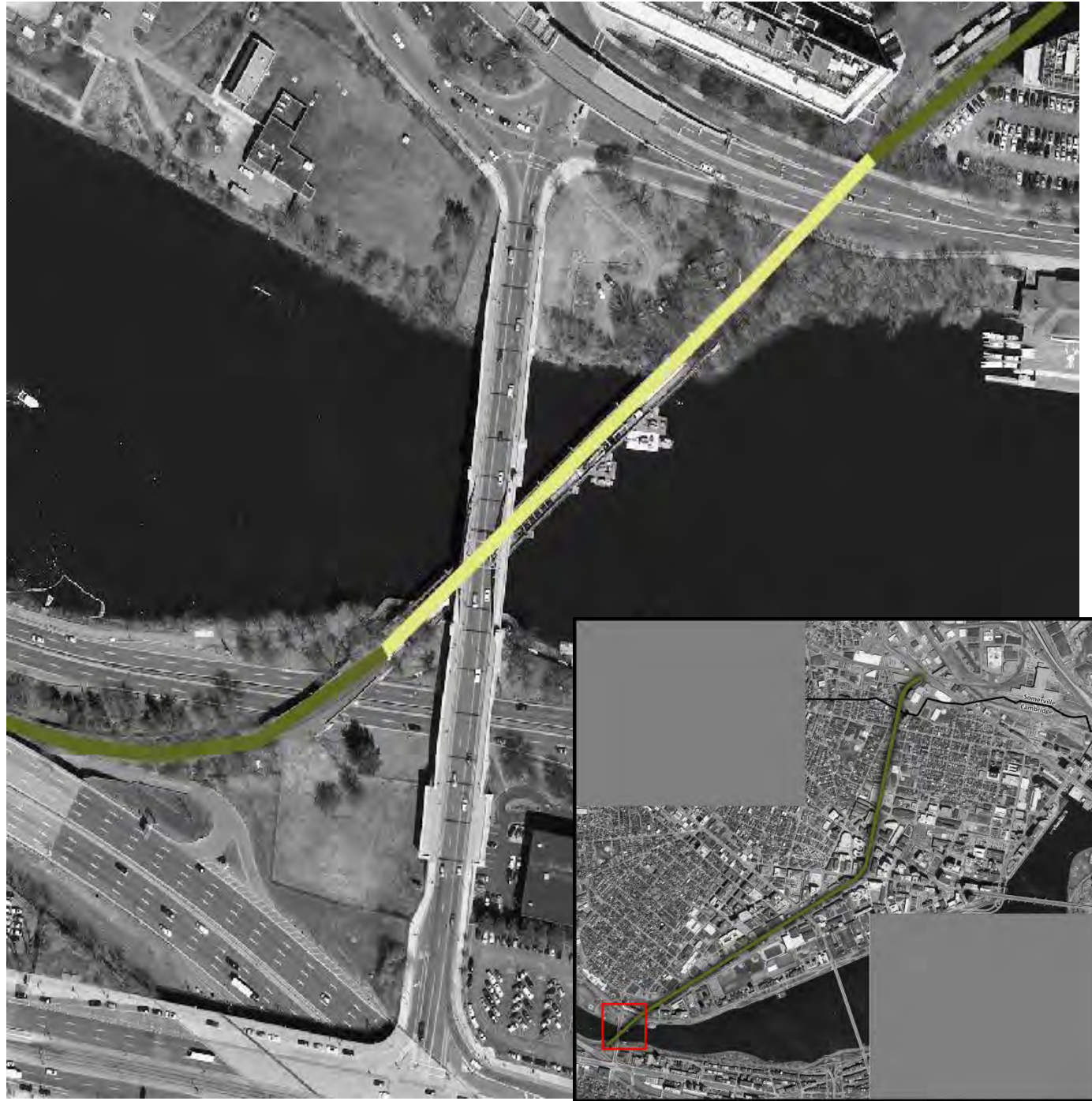


Rail with Trail Examples
(British Columbia, Seattle WA, Burlington VT)

Grand Junction Path Timeline







Section 1: Charles River Crossing

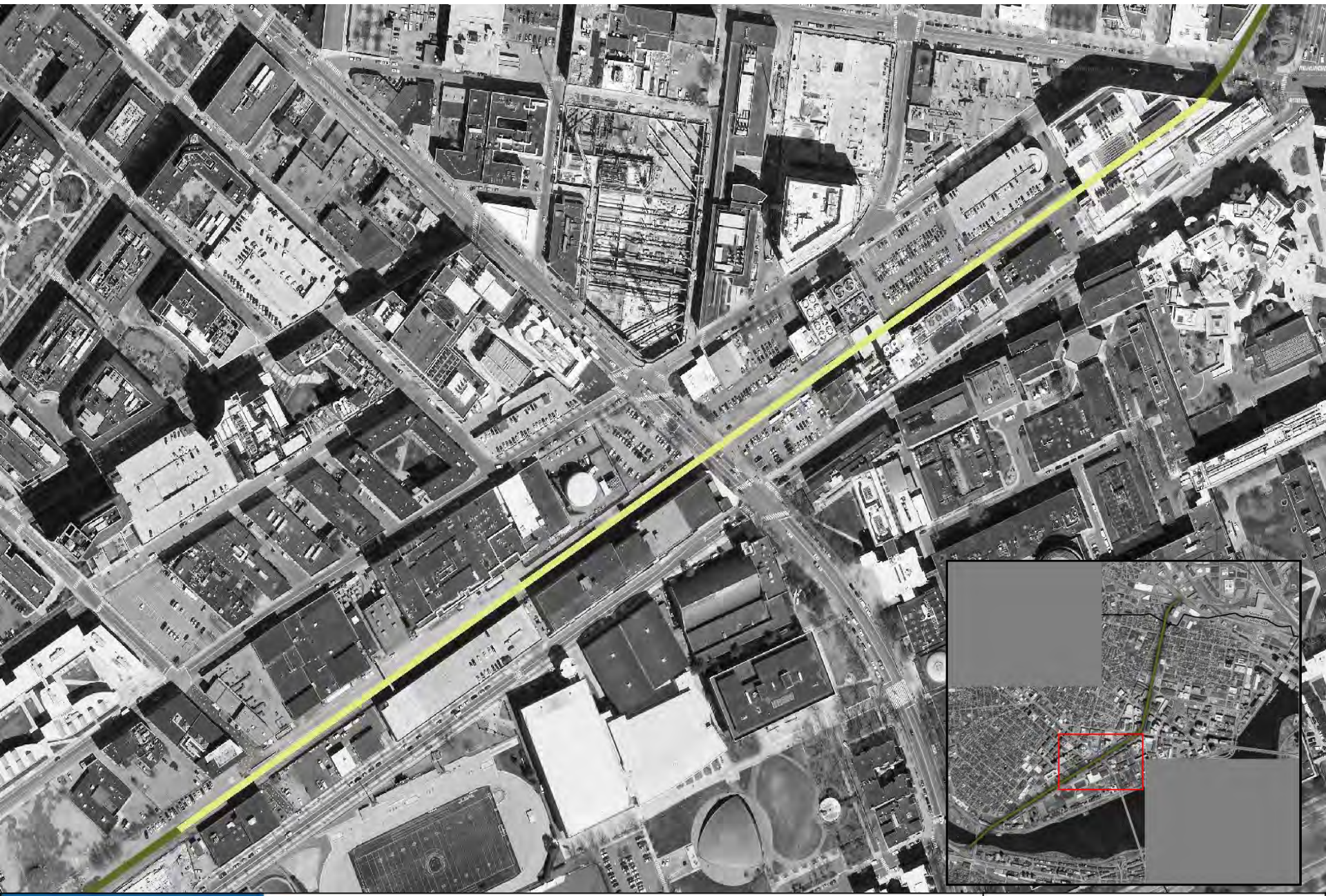


Section 2: Charles River – 250 Feet West of Pacific Street

2



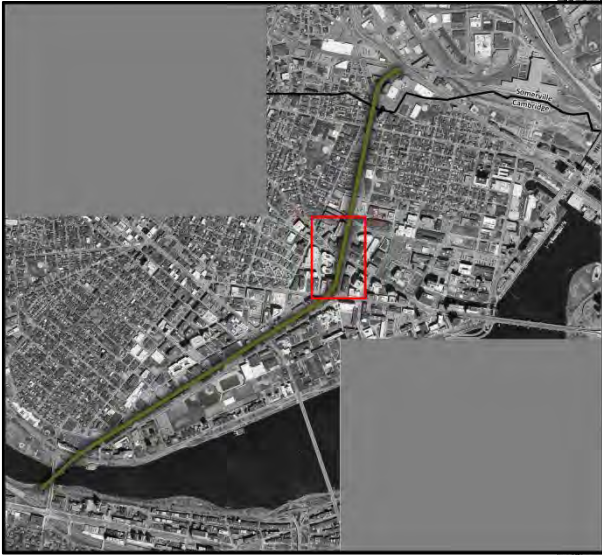
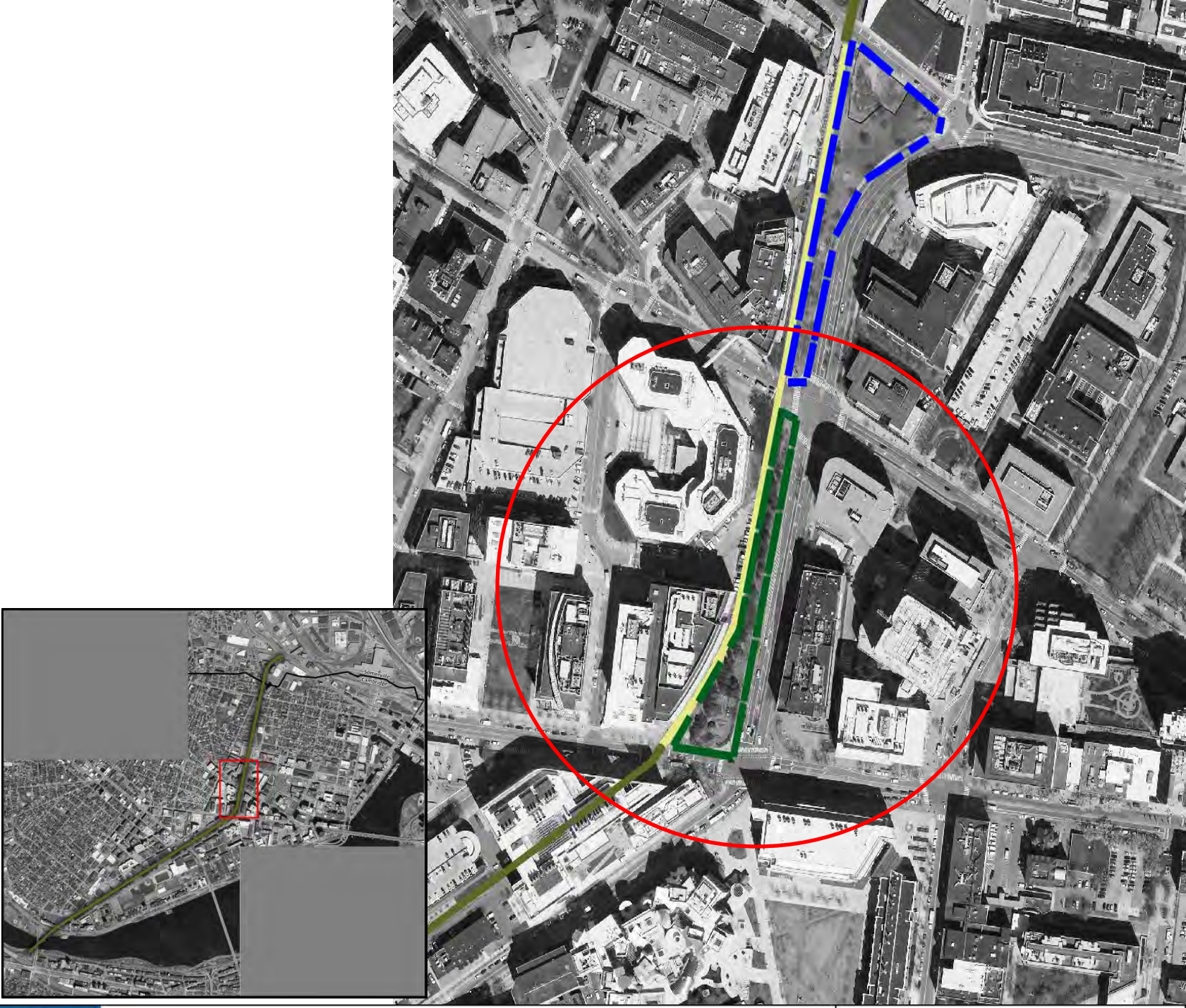
05/29/2014 15:01



Section 3: Near Pacific Street to Main Street
MIT Feasibility Study Section



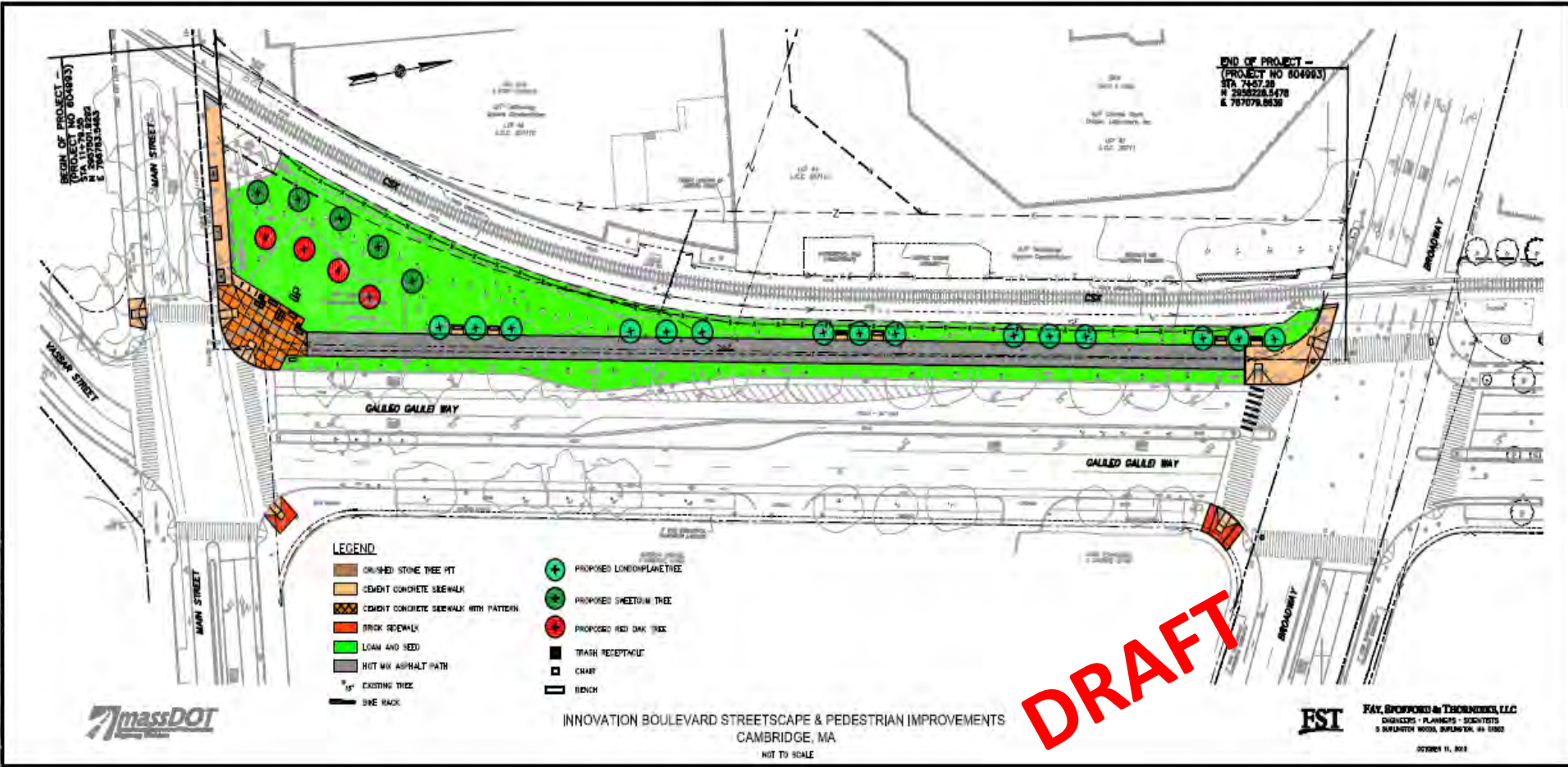
05/29/2014 14:16



Section 4: Main Street to Binney Street
CRA : Galileo Galilei from Main to Broadway



05/29/2014 14:13



**CRA Open Space Main – Broadway:
Construction to begin Fall 2014**



Section 5: North of Binney Street



THE GRAND JUNCTION PATH

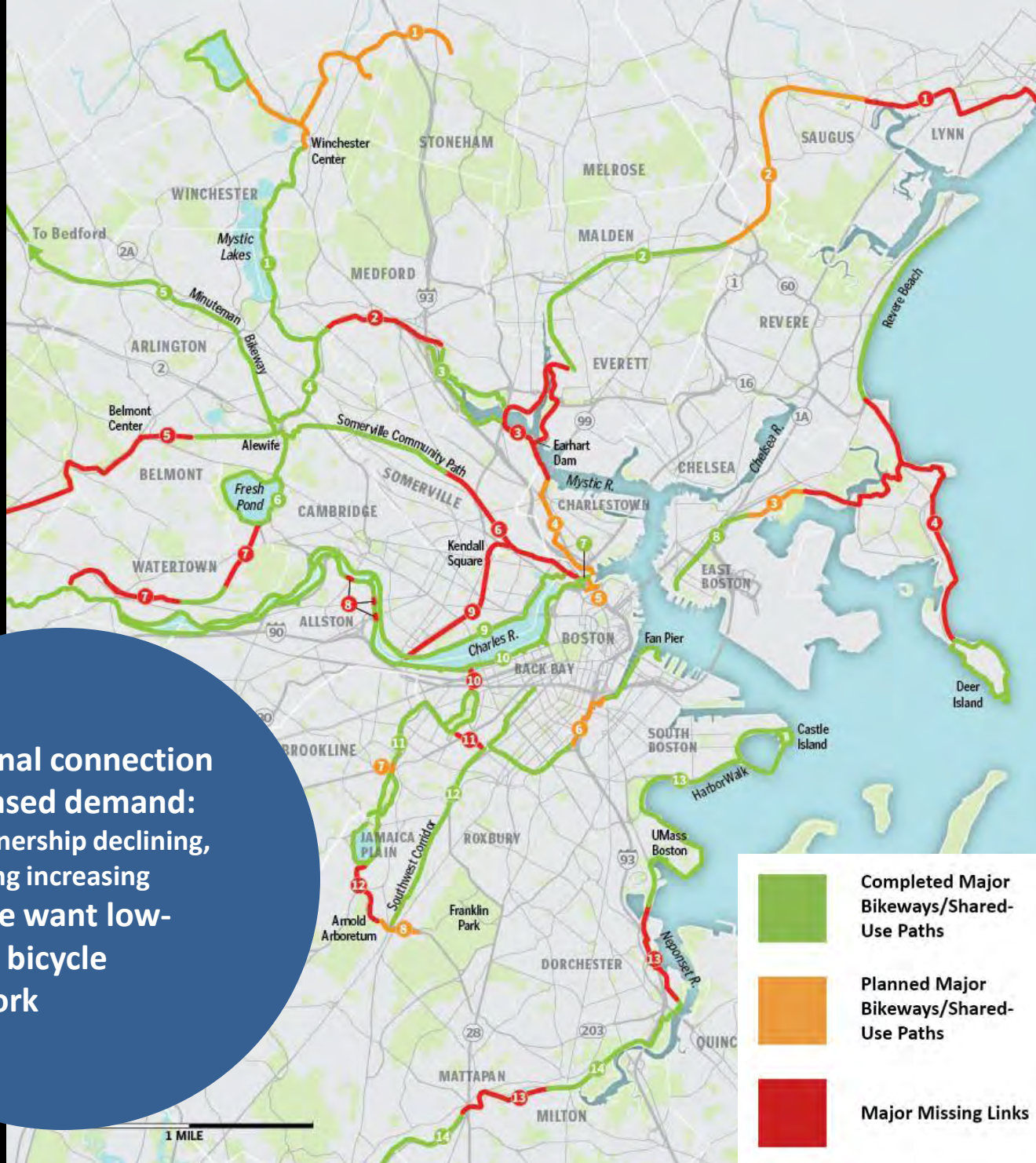
1. WHAT IS THE GJ PATH?
2. WHY IS IT IMPORTANT?
3. NEXT STEPS?



For more information, visit:
cambridgema.gov/grandjunction
Contact: Jeff Rosenblum
jrosenblum@cambridgema.gov
617-349-4615

Cambridge Community Development Department

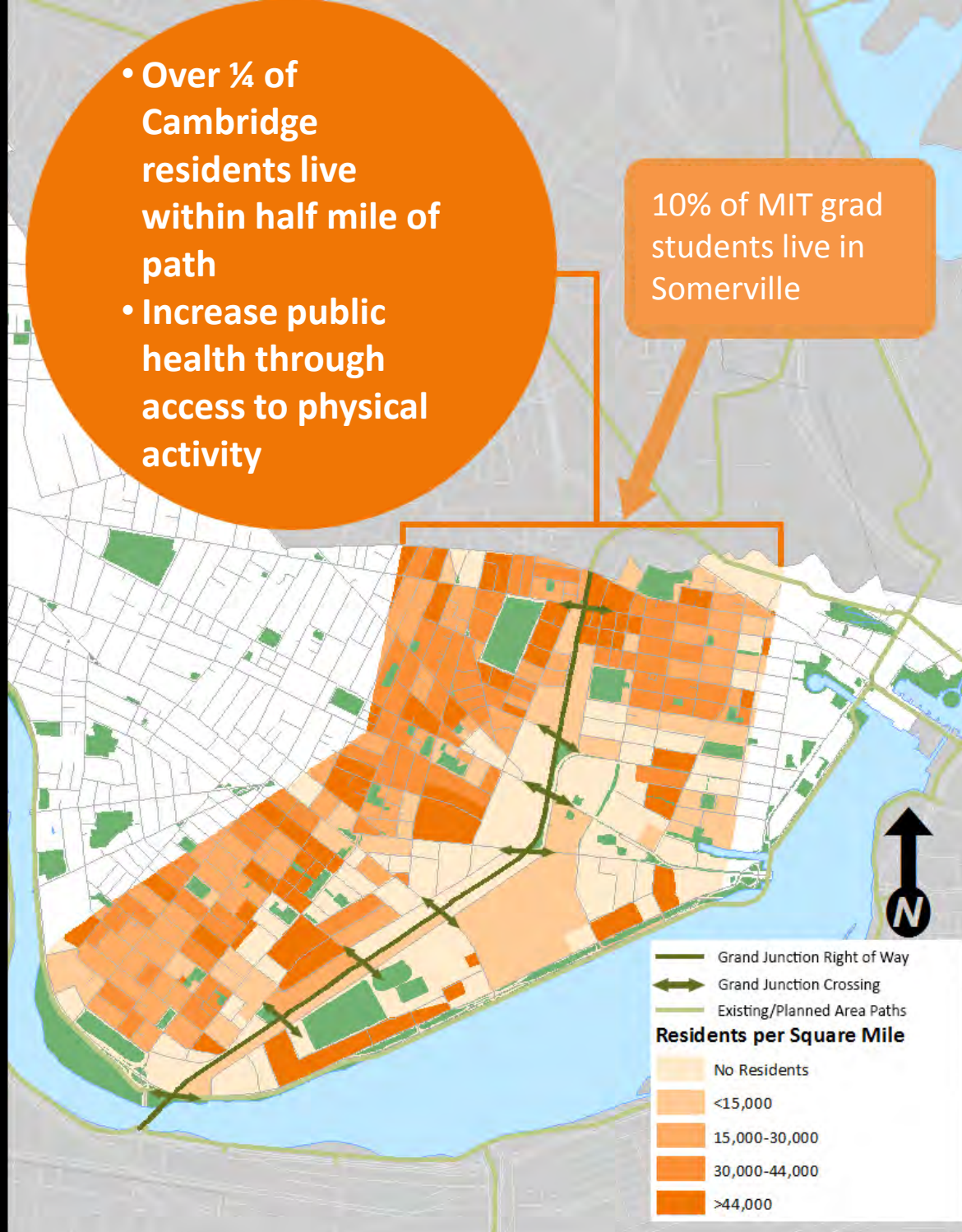
Rendering courtesy of the Friends of the Grand Junction Path



- Regional connection
- Increased demand: car ownership declining, bicycling increasing
- People want low-stress bicycle network

- Over ¼ of Cambridge residents live within half mile of path
- Increase public health through access to physical activity

10% of MIT grad students live in Somerville



- 70% MIT students live on campus or close to MIT
- Path would improve access to schools and parks

- Grand Junction Right of Way
- Grand Junction Crossing
- Existing/Proposed Area Path
- Library
- Public or Private School
- 1/2 Mile Path Corridor
- Open Space
- MIT Buildings



THE GRAND JUNCTION PATH

1. WHAT IS THE GJ PATH?
2. WHY IS IT IMPORTANT?
3. NEXT STEPS?



For more information, visit:
cambridgema.gov/grandjunction
Contact: Jeff Rosenblum
jrosenblum@cambridgema.gov
617-349-4615

Cambridge Community Development Department

Rendering courtesy of the Friends of the Grand Junction Path

East-west pathway?

Connection to Somerville
Community Path

Section 5

CRA section under design

Section 4

MIT Feasibility Study

Section 3

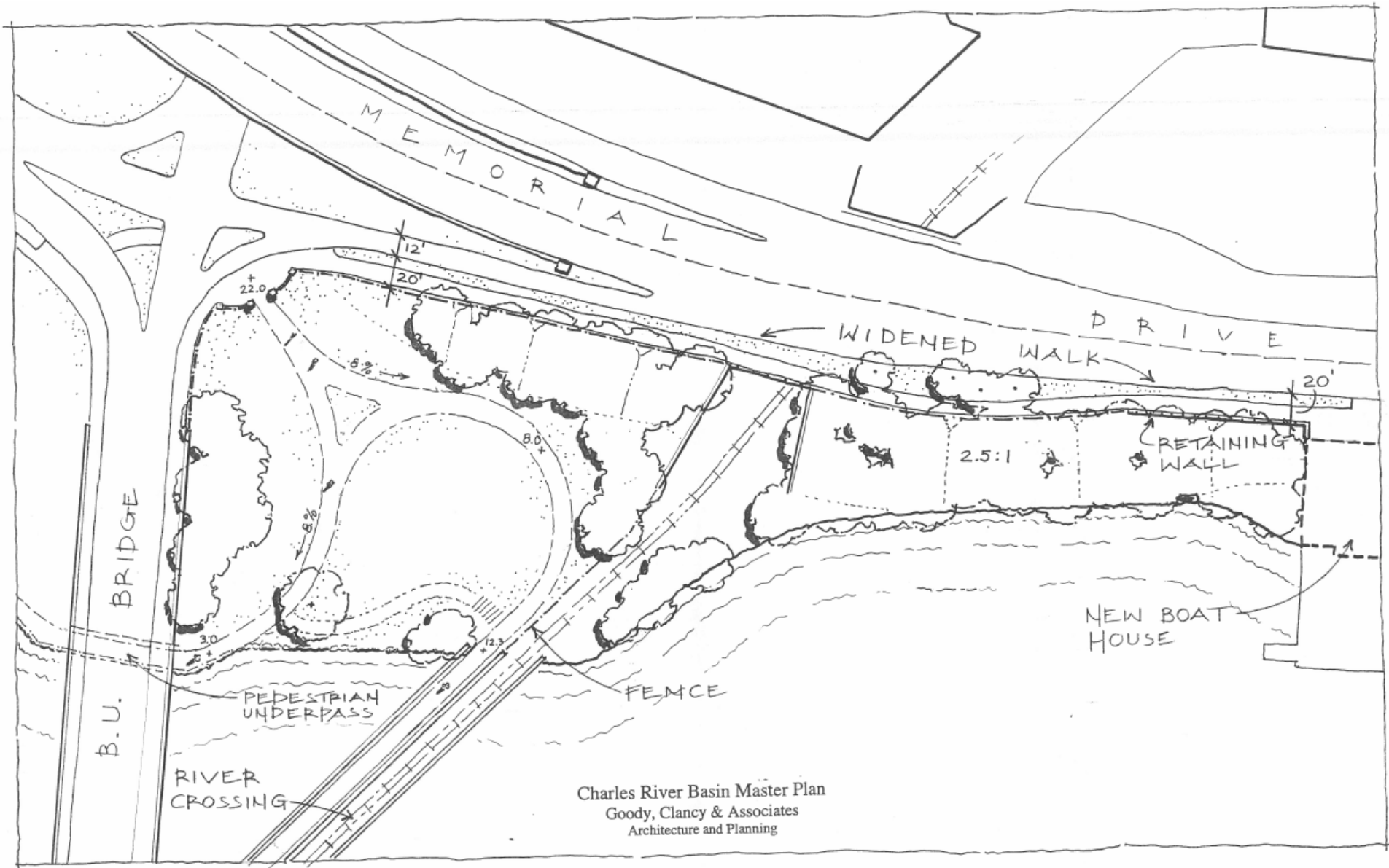
Future use of the
corridor for transit
(e.g., DMU rail)

Section 2

Connection to path along Charles

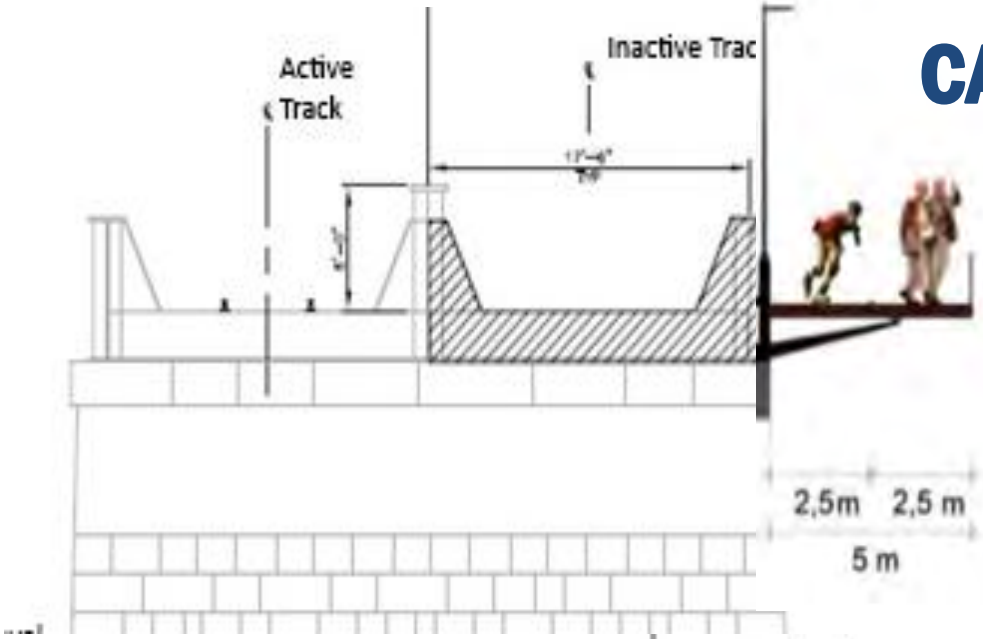
Section 1

Connection over Charles River

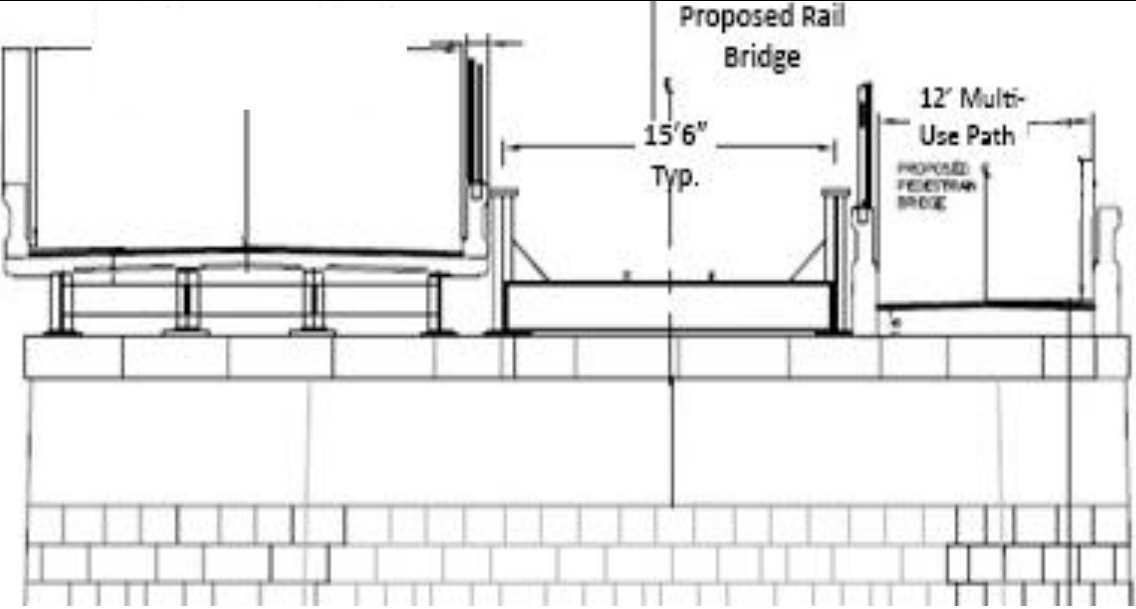


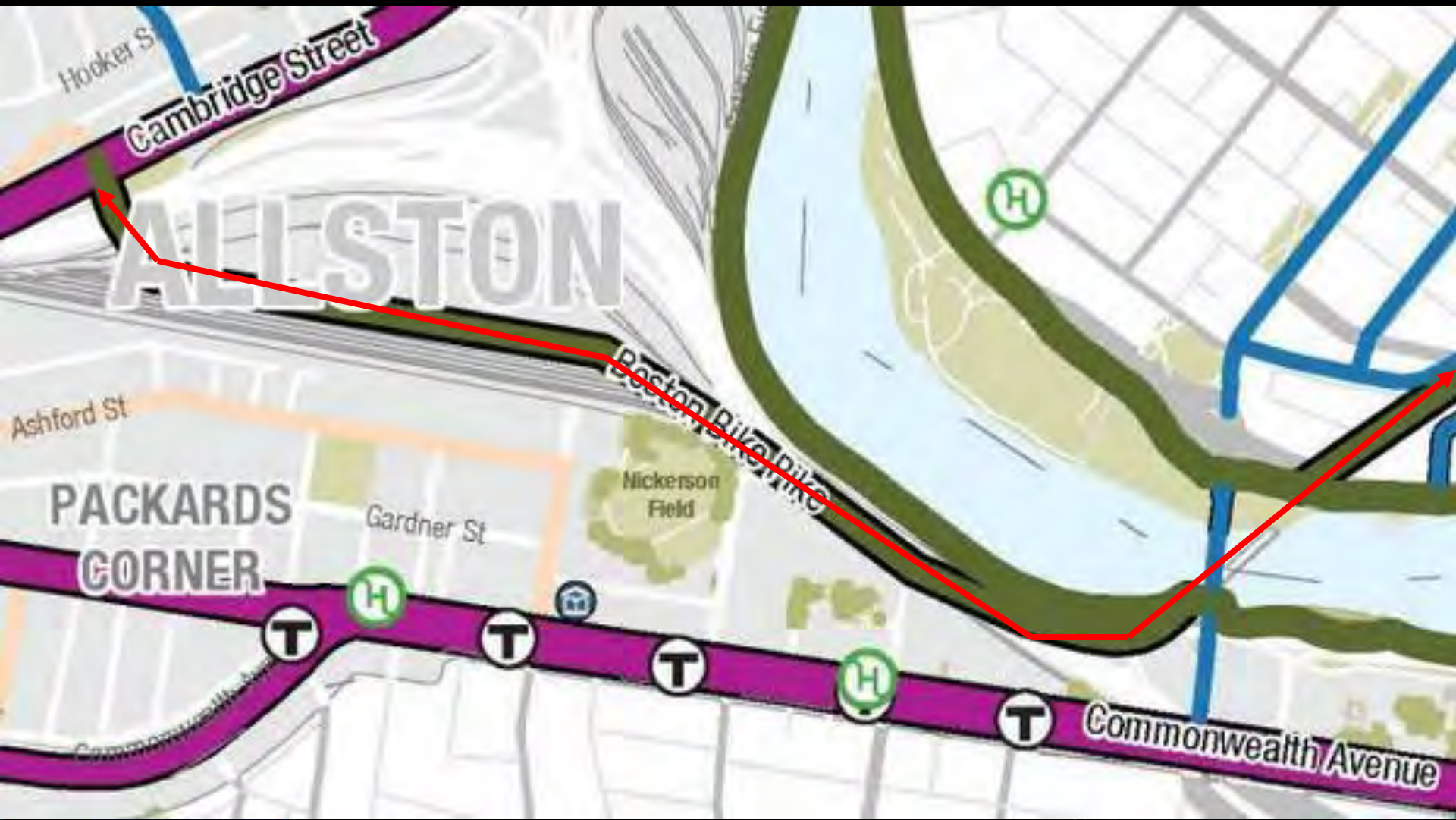


CANTILEVER



WIDEN





Connection to “Boston Bike Pike”

Source: City of Boston Bike Network 2030 Plan, People’s Pike



**Proposed Somerville Community Path
(part of Green Line Extension project)**

Somerville
Cambridge

Somerville Community Path plan



East/west concept?

Grand Junction Path plan

- MBTA Subway
- Public Path
- Bicycle or M
- MBTA Bus
- One-Way S
- One-Way S
- One-Way S
- Short Street

East-west Path from Danehy Park to the Grand Junction Path?

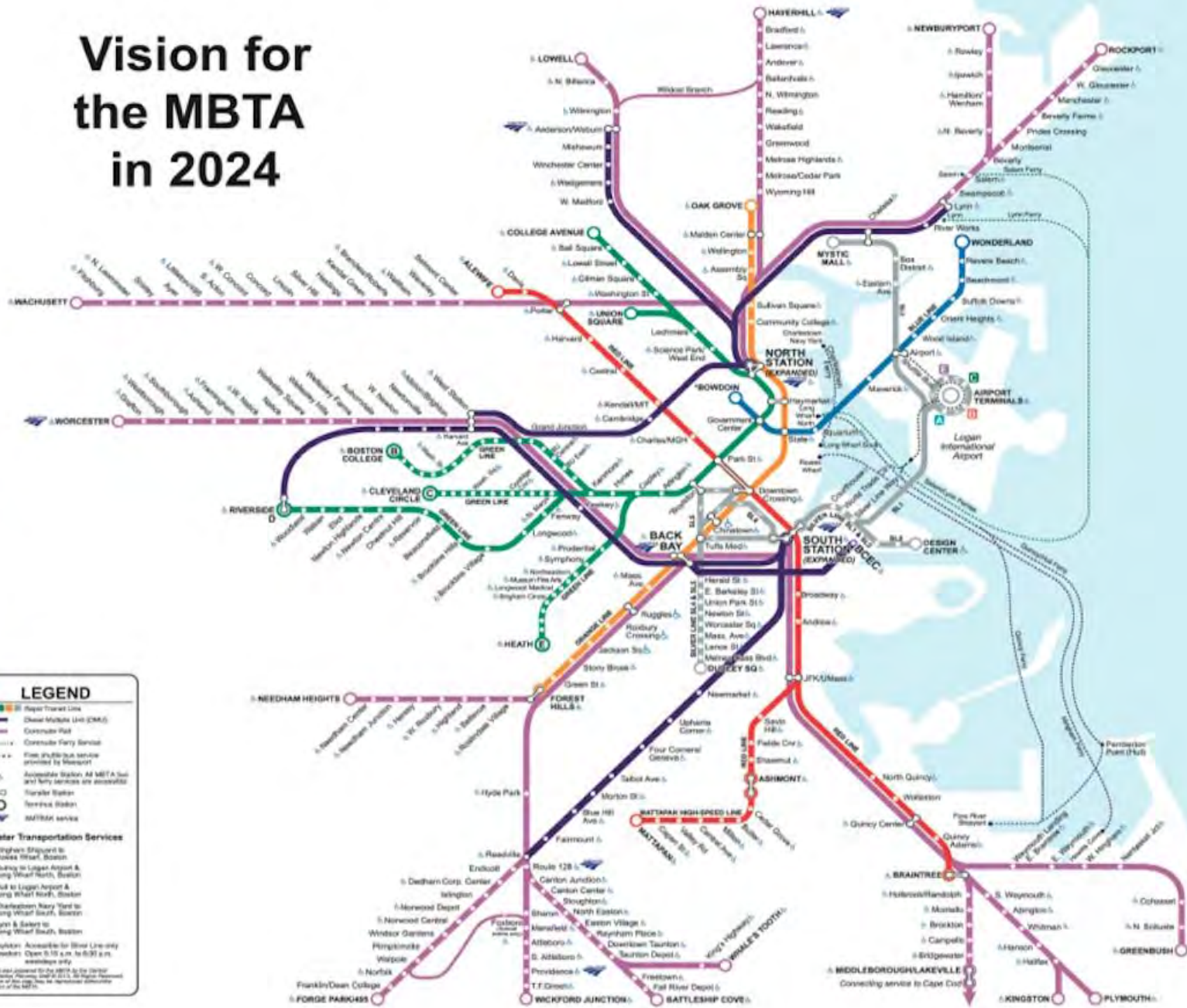


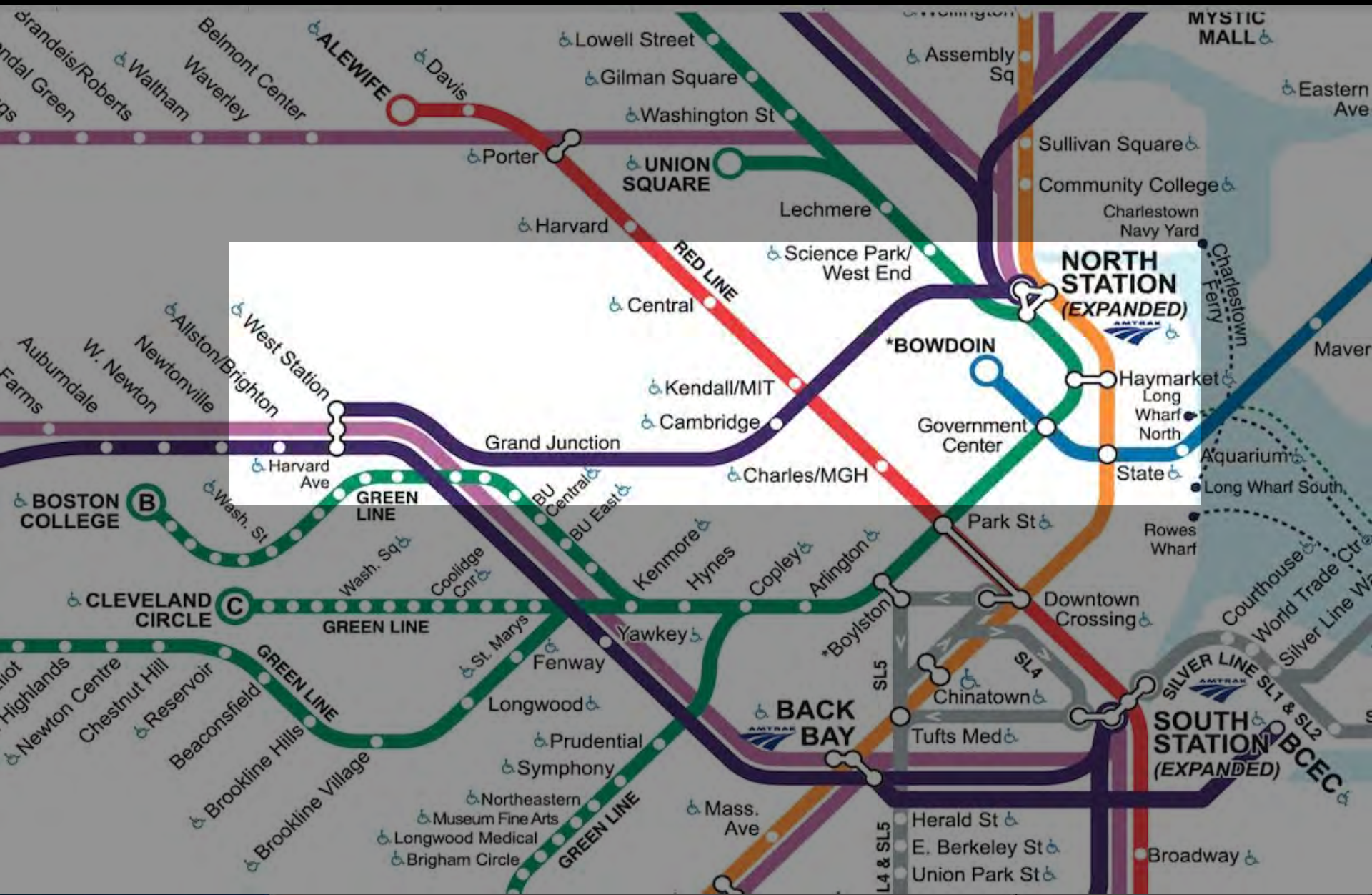
Alewife Bicy and Pedestr

**East/West corridor:
 Alewife Bike/Ped Study (MAPC, 2009)**

Shared use path
 — EXISTING
 - - CONCEPTUAL

Vision for the MBTA in 2024



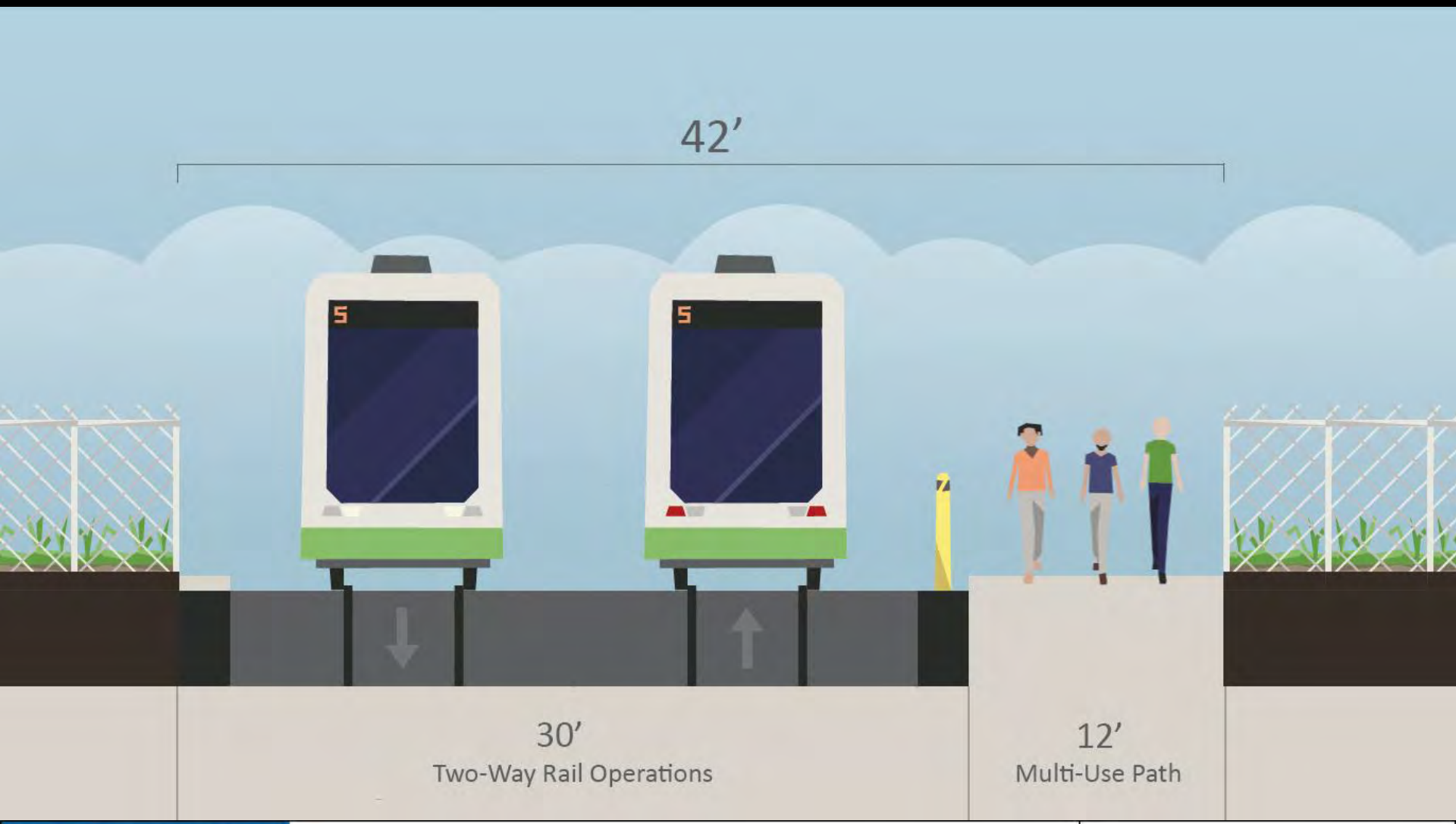


MassDOT DMU transit along Grand Junction

Source: MBTA FY 2014-2018
 Transportation Capital Investment Plan



Example of “Diesel Multiple Unit” (DMU) vehicles (Opole, Poland)



42'

30'
Two-Way Rail Operations

12'
Multi-Use Path

Grand Junction Minimum Width with Two-Way Rail Operations (feasibility unknown)

Source: MBTA Rail Operations Standard Plans, 2006 Grand Junction Feasibility Study

For more information <http://cambridgema.gov/grandjunction>

THE GRAND JUNCTION PATH



For more information, visit:
cambridgema.gov/grandjunction
Contact: Jeff Rosenblum
jrosenblum@cambridgema.gov
617-349-4615

Cambridge Community Development Department

Rendering courtesy of the Friends of the Grand Junction Path