



CITY OF CAMBRIDGE  
**GRAND JUNCTION MULTI-USE PATH DESIGN PROJECT**  
**WORKING GROUP #4 – DECEMBER 3, 2019**





# MEETING AGENDA

## Welcome!

- Introductions and welcome (5 min)
- Review meetings held to date (5 min)
  - Previous Working Group meetings
- Review of design concepts toolbox (35 min)
  - Toolbox of crossing controls
  - Overview, issues, and opportunities at major intersection crossings
- Workshop on concept designs (60 min)
- Workshop debrief (10 min)
- Upcoming meetings schedule & next steps (5 min)
  - Community Meeting #2, Winter 2020
  - Working Group Meeting #5, Winter/Spring 2020

# Review of meeting guidelines

- Be prepared
- Stay on schedule
- Reserve "airtime" for Working Group members
- Step up/step back – everyone on Working Group speaks
- One person speaking at a time
- Don't repeat ("air knock" for agreement)
- Turn tent on side (if you like, instead of raising hand)
- Silence phones
- Do what you need to (take phone call outside, use the restroom)
- Listen
- Assume good intentions
- Disagreement is OK, but don't criticize



# REVIEW OF PREVIOUS MEETING MATERIALS

## Main Points

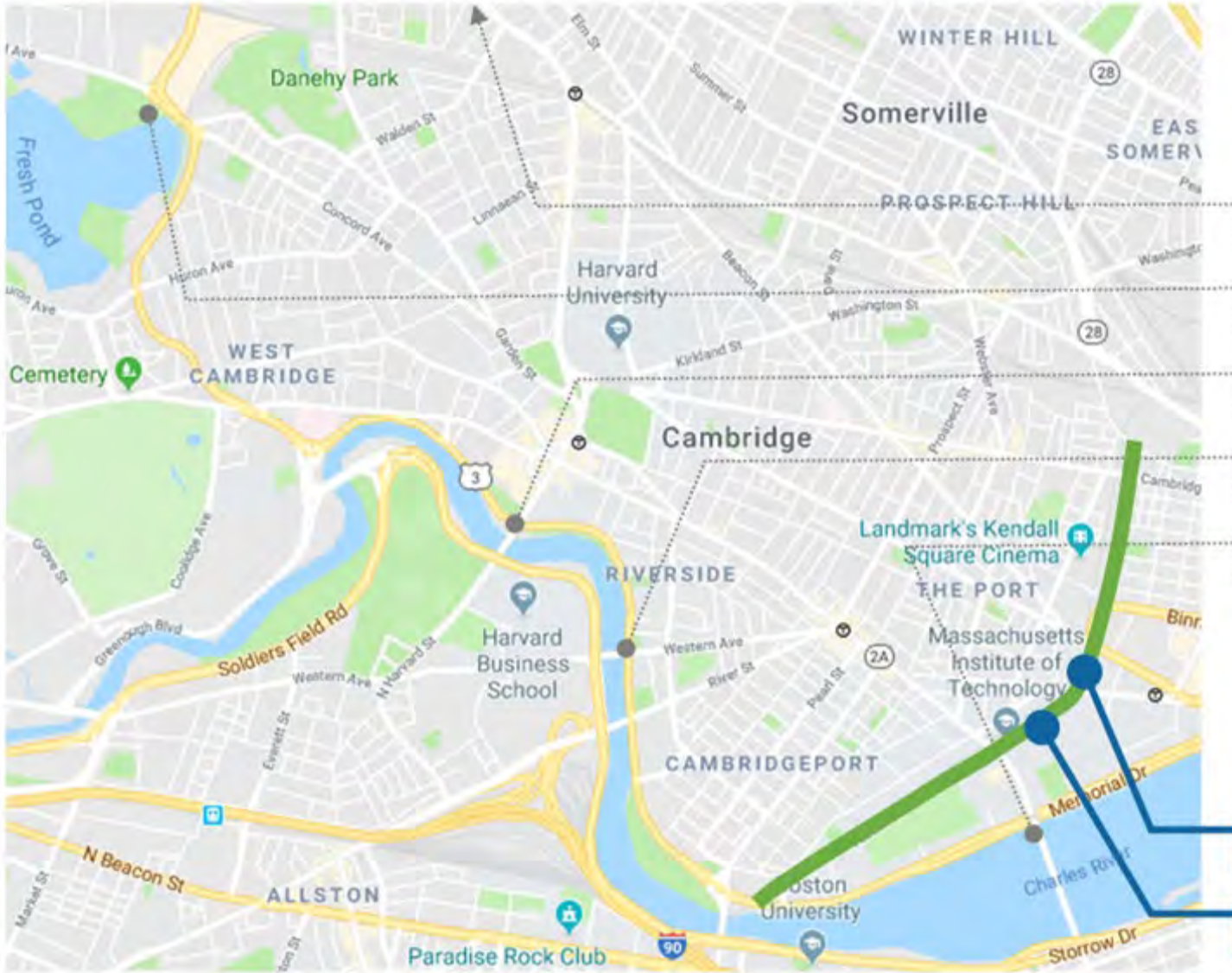
- Vision is for a Grand Junction Multi-Use Path as a corridor for commuting, exercise, safe cycling, and a connection to other modes.
- Varied availability of space along track and varied ownership.
- Multi-use path will have to cross sides of the railroad at two points and has major street intersections to cross as well.
- Identified a preferred path cross-section and a limited space cross-section.
- Designing for current rail use, but not precluding future two-track transit.

## **Demand estimates for Grand Junction Multi-Use Path**

The City of Cambridge asked the Metropolitan Area Planning Council to estimate the number of people cycling on the future Grand Junction MUP on an average weekday.

- Estimated average AM and PM rush hour count of cyclists in both directions:
  - North of Main Street: 468
  - South of Main Street: 558

# REVIEW: PREVIOUS WORKING GROUP MEETINGS



## 2018 Cambridge bike counts of AM and PM peak hour cyclists

178: Linear Park at Mass Ave

169: Fresh Pond path

225: Mem. Dr. at JFK

283: Mem. Dr, at Western Av.

291: Mem. Dr. at Mass Av.

## MAPC Estimates of AM and PM peak hour cyclists

468: North of Main St.

558: South of Main St.



## What We've Heard

What you hope to see overall:

- Separation from traffic
- Separation from rail with fence/barrier
- Water fountains, trash bins, and quality seating (Adirondack chairs)
- Bicycle parking and Blue Bikes stations
- Public art
- Trees, plantings - flower beds
- Renewed and integrated park/open spaces

What transportation features you hope to see:

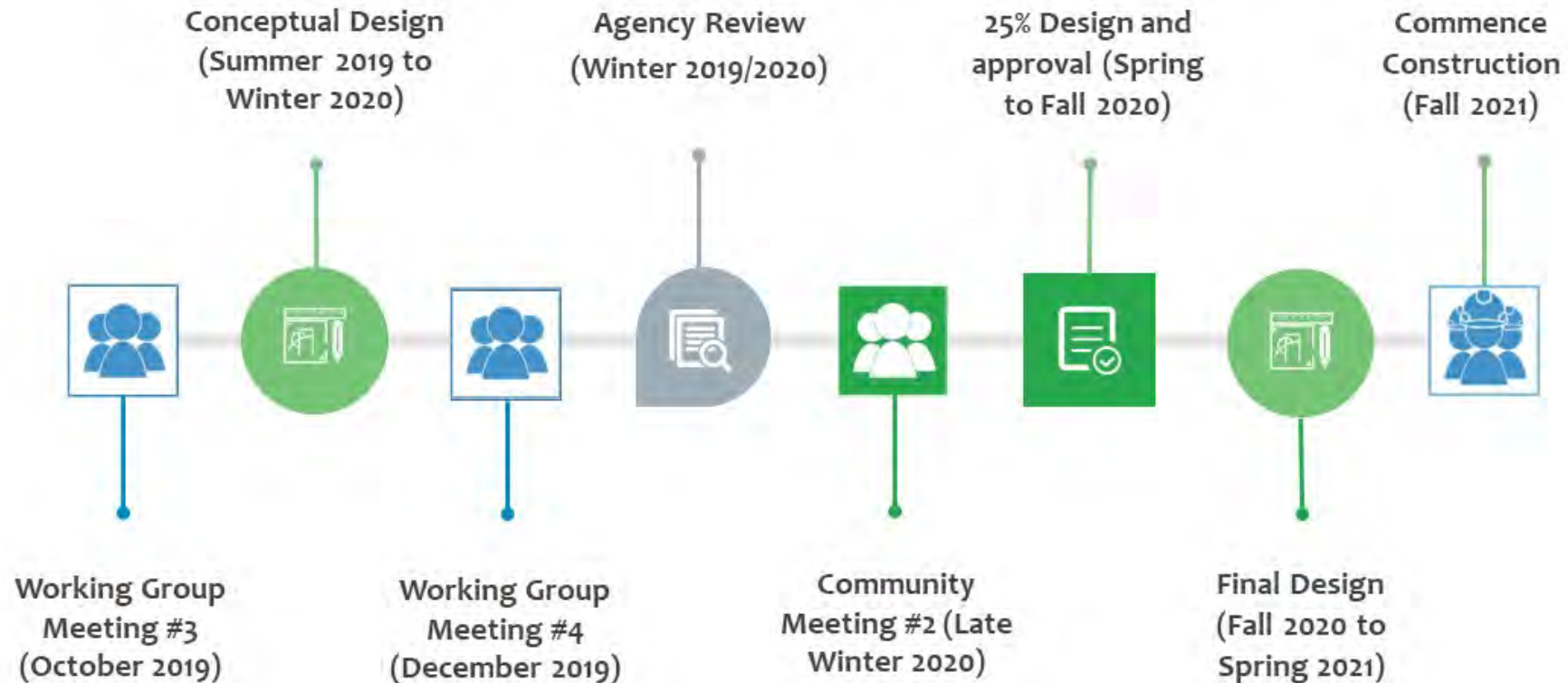
- Separating directions of travel along path
- Separation of peds and bikes where feasible
- Protected pedestrian and bicycle crossings at intersections

Concerns:

- Safety, especially at night, fewer "eyes on the street" between street crossings

# REVIEW: PROJECT SCHEDULE

## Overview Schedule





# REVIEW OF TOOLBOX FOR DESIGN CONCEPTS

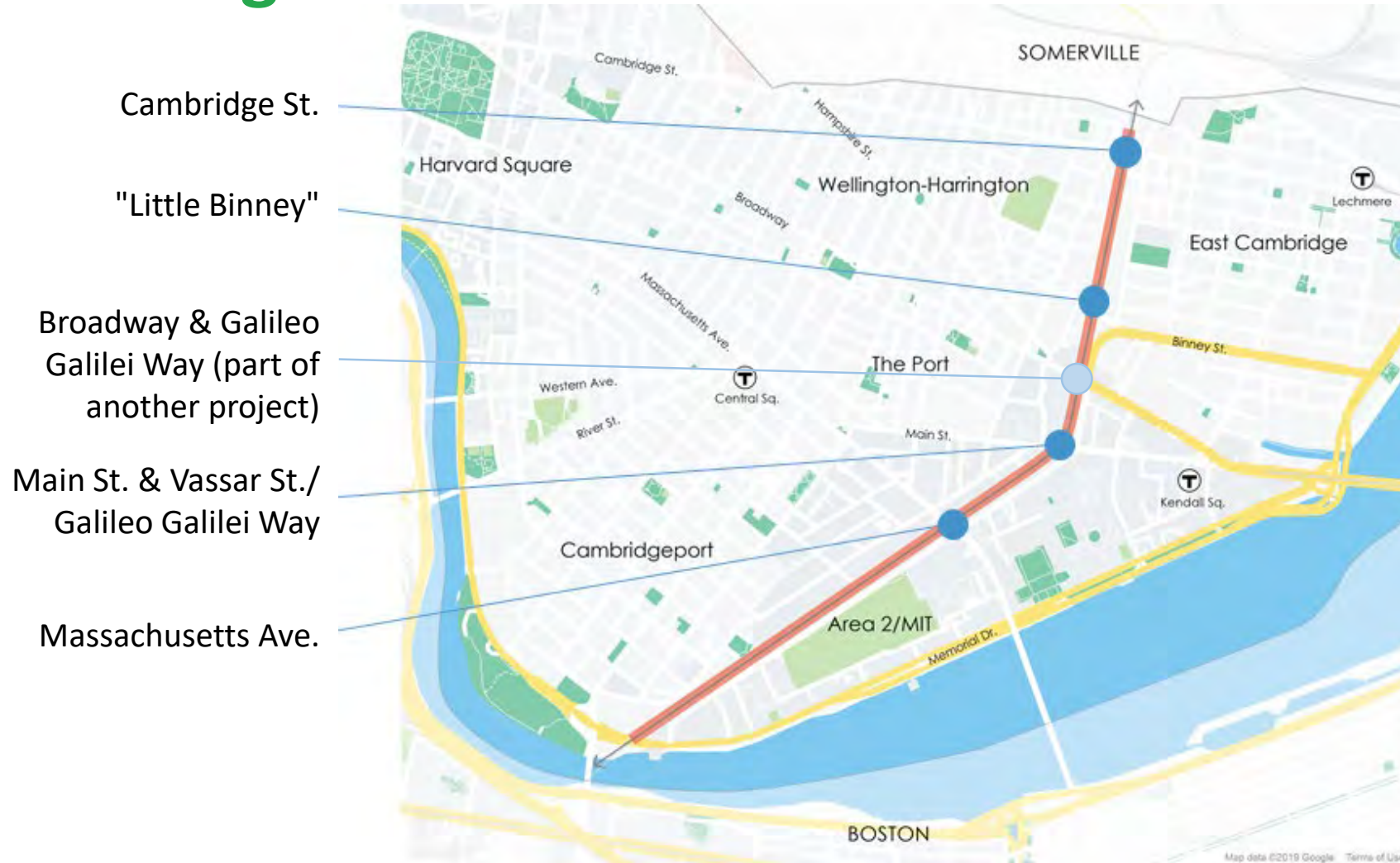
# REVIEW: TOOLBOX OF CROSSING CONTROLS

## The transportation design challenge – it's not about modes; it's about PEOPLE



# REVIEW: MAJOR INTERSECTION CROSSINGS

## Street Crossings



## Crossing Controls – Potential Design Elements



Pedestrian Signal & Countdown



Curb Extension



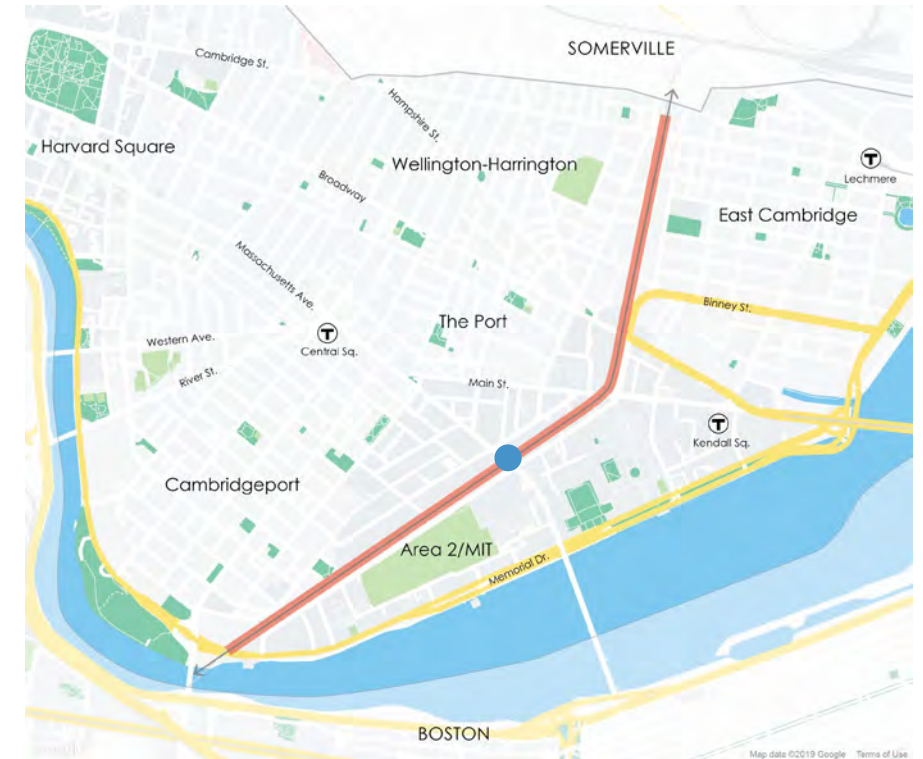
Bicycle Traffic Signal



Rectangular Rapid Flashing Beacon (RRFB)

# REVIEW: MAJOR INTERSECTION CROSSINGS

## Massachusetts Avenue



# REVIEW: MAJOR INTERSECTION CROSSINGS

## Massachusetts Avenue

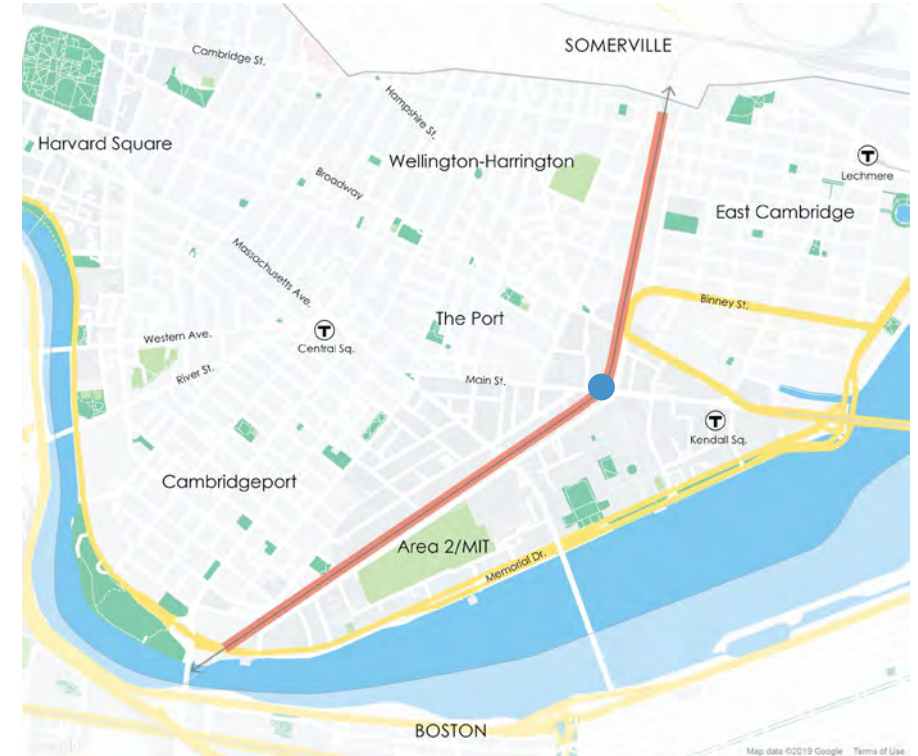


- High volume of cross-traffic
- Signal coordination with Vassar and Albany intersections



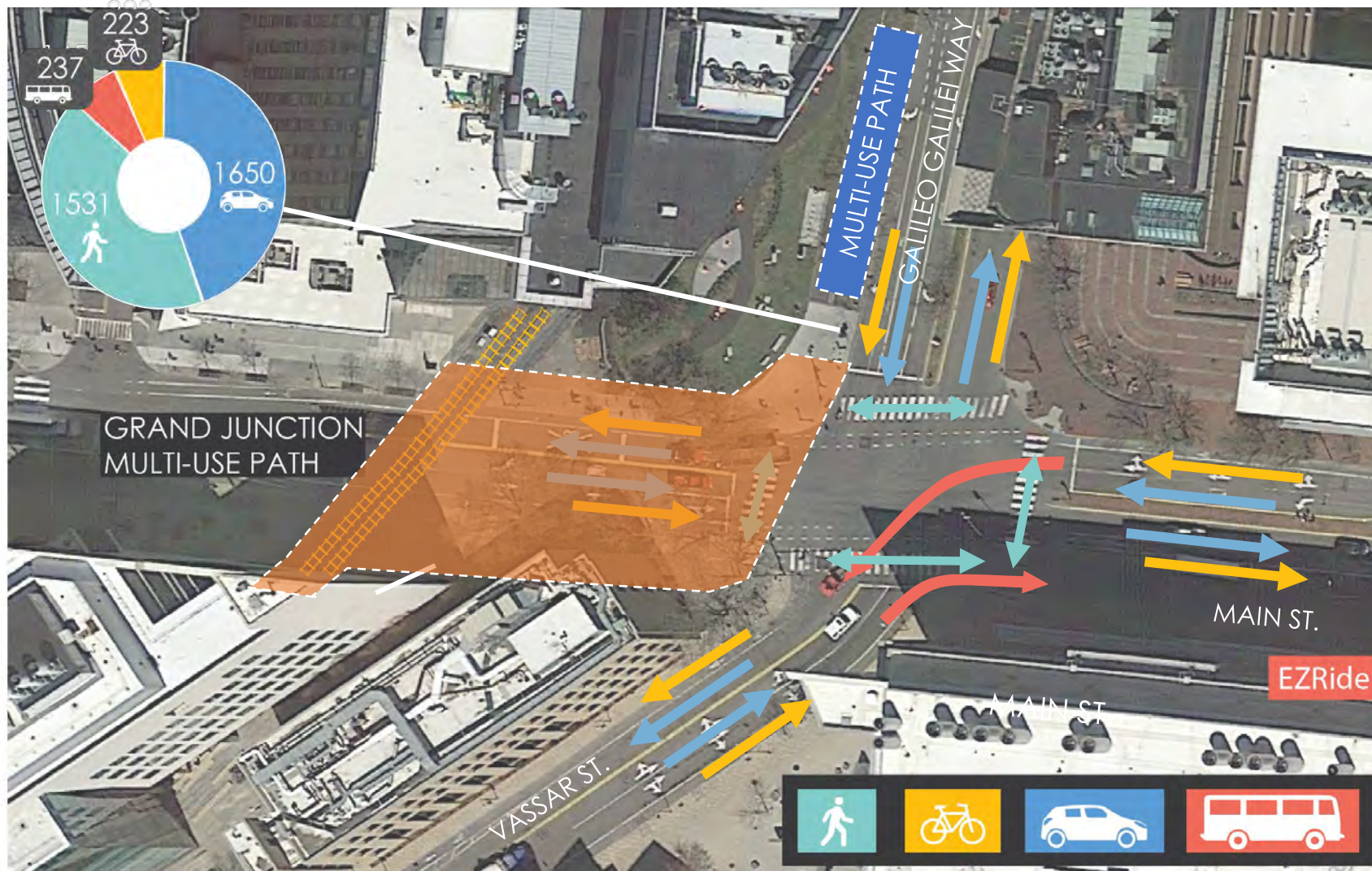
# REVIEW: MAJOR INTERSECTION CROSSINGS

## Main Street & Vassar Street / Galileo Galilei



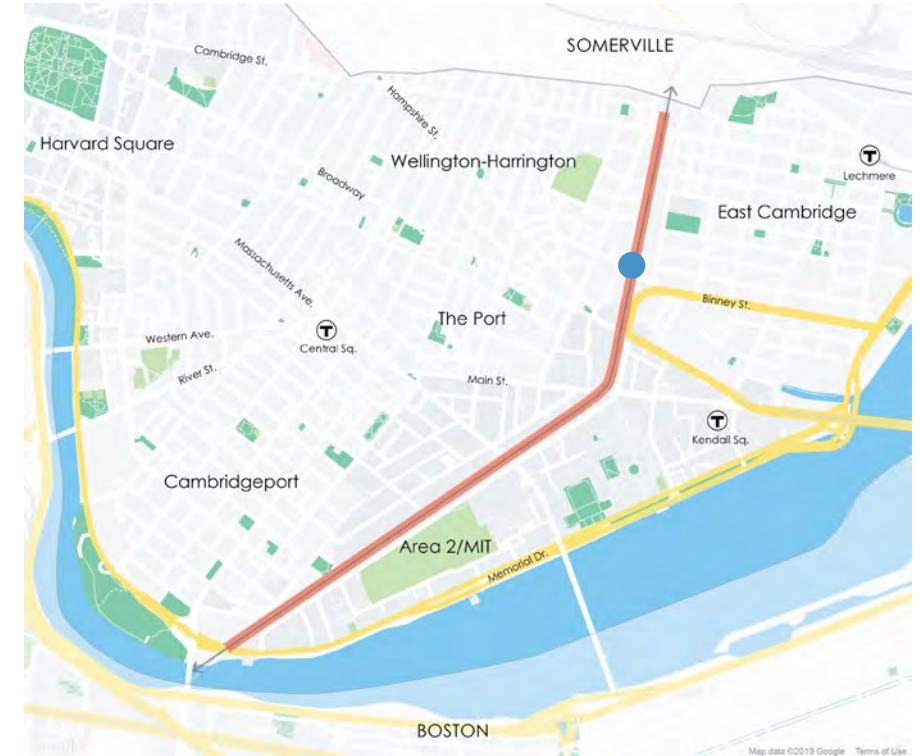
# REVIEW: MAJOR INTERSECTION CROSSINGS

## Main Street & Vassar Street/Galileo Galilei Way



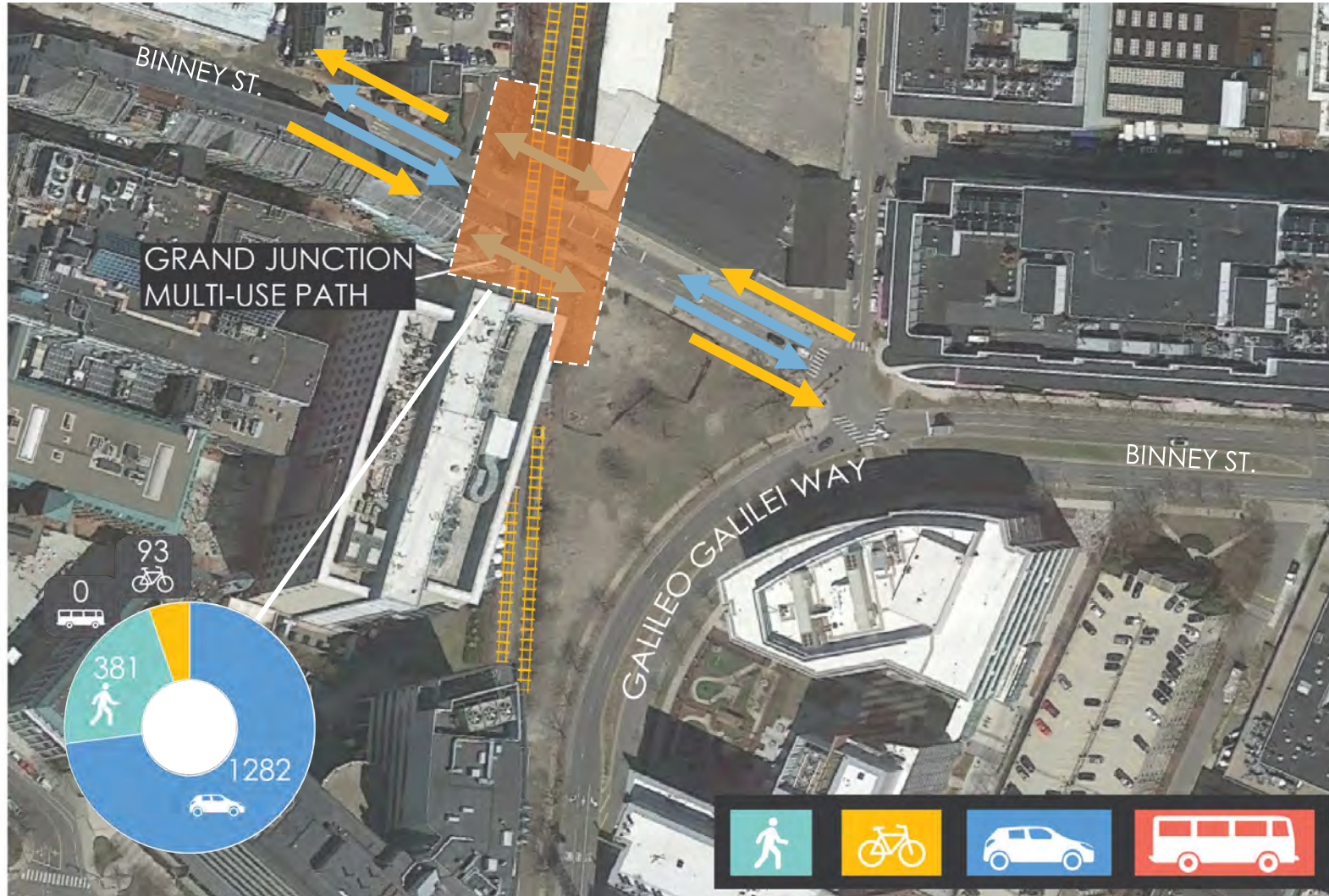
- Path transitions from west side of tracks and into GJ Park
- Provide a separated connection from GJ path to GJ park
- Integrate signalized crossing with Main and Vassar St. intersection

## Binney Street



# REVIEW: MAJOR INTERSECTION CROSSINGS

## Binney Street



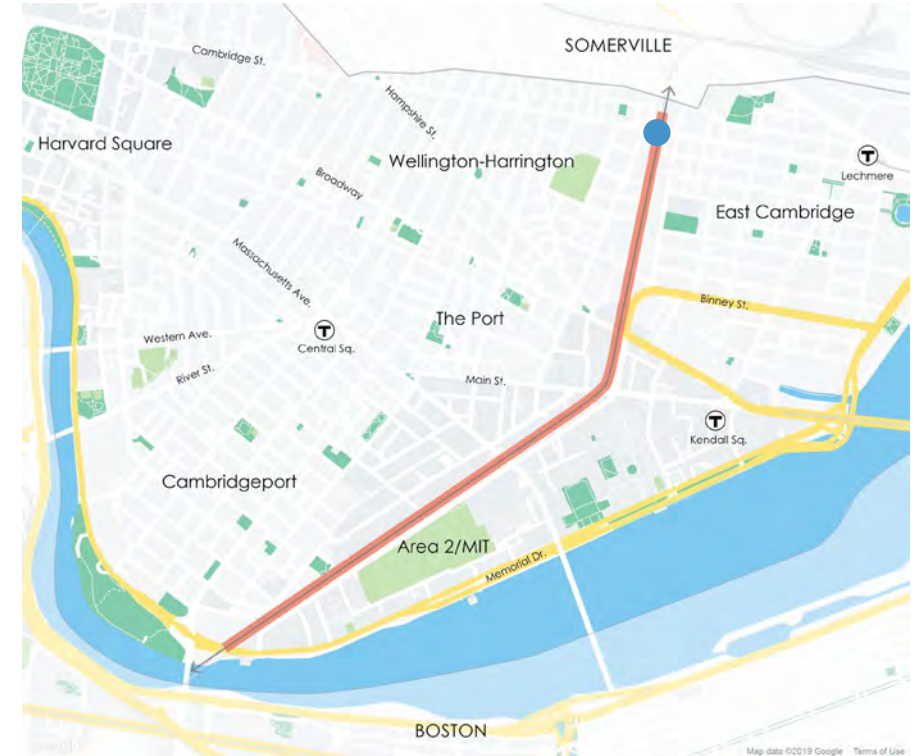
- Binney Street park to be constructed, including GJ Multi-use Path segment
- Path transitions from east side to west side of tracks north of Little Binney

Mid-block crossing treatment considerations (RRFB, raised crosswalk, etc.)

- Unsignalized
- Raised path and crossing
- Coordination with proposed developments

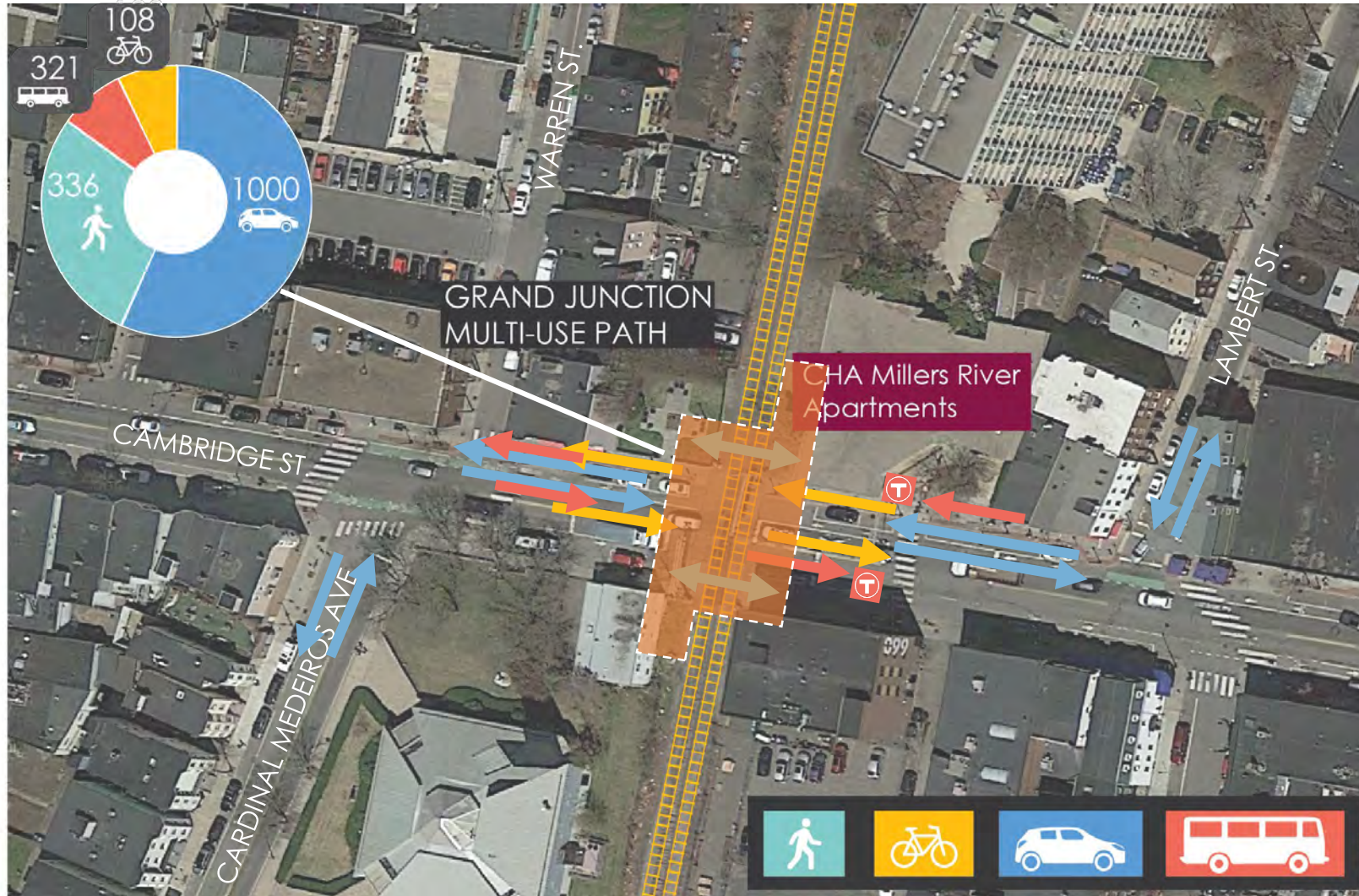
# REVIEW: MAJOR INTERSECTION CROSSINGS

## Cambridge Street



# REVIEW: MAJOR INTERSECTION CROSSINGS

## Cambridge Street



- Path transitions from west side to east side of tracks north of Cambridge Street
- Cambridge Housing Authority Millers River Apartments located at corner
- Considering bus prioritization and traffic control for intersecting streets



# WORKSHOP ON CONCEPT DESIGNS



# WORKSHOP DEBRIEF





# NEXT STEPS

## FUTURE MEETING DATES (SUBJECT TO CHANGE)

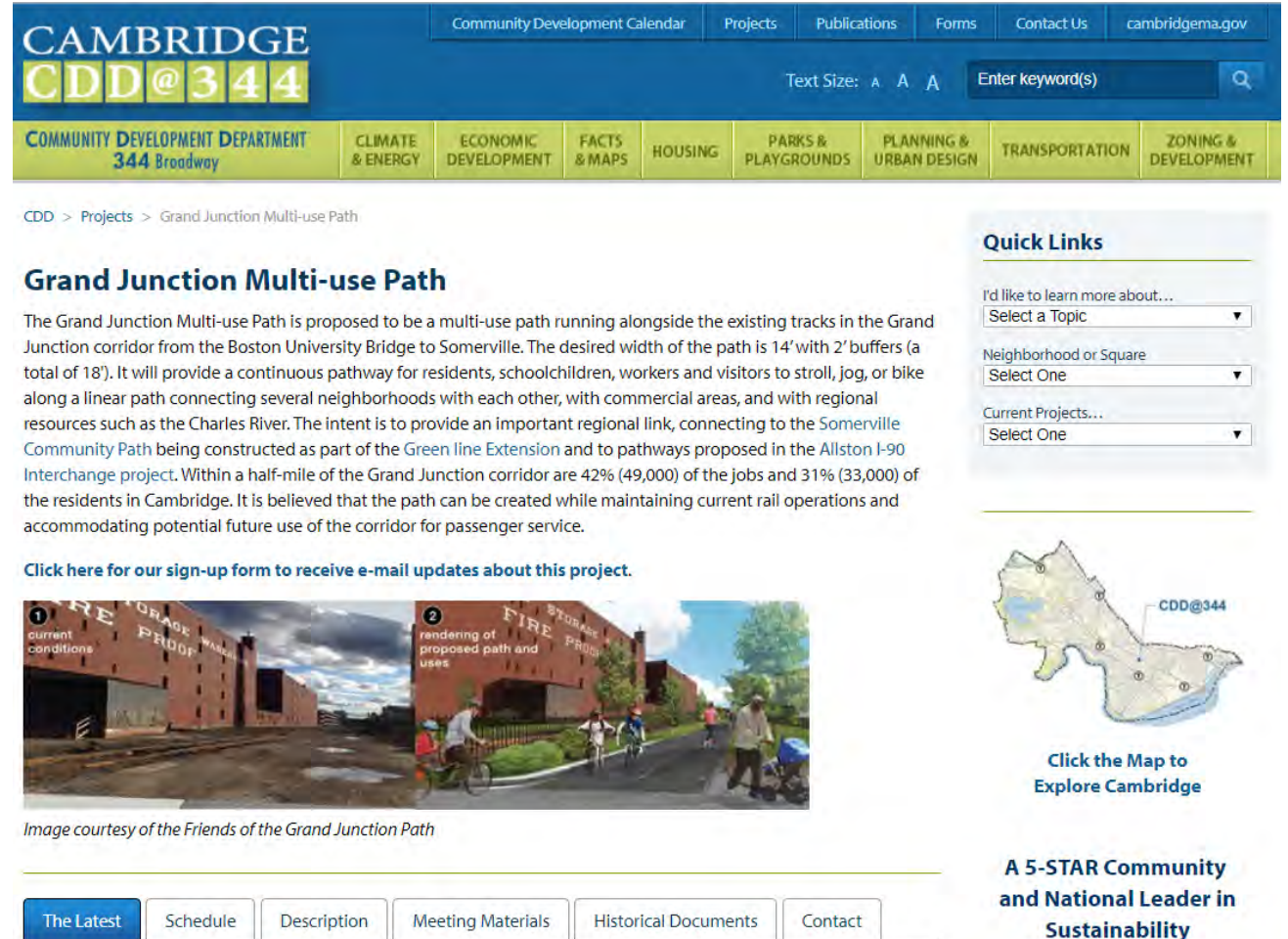
- **Second Community Meeting, Late Winter 2020**
- Fifth Working Group, Winter/Spring 2020
- **25% Design Community Meeting, Spring 2020**
- Sixth Working Group, Spring/Summer 2020
- **75% Design Community Meeting, Fall 2020**



Find us online:

[CambridgeMA.gov/GrandJunction](http://CambridgeMA.gov/GrandJunction)

- Most recent updates
- Historical information
- Documentation of Design Working Group to date



The screenshot shows the Cambridge CDD@344 website. The header includes navigation links for Community Development Calendar, Projects, Publications, Forms, Contact Us, and cambridgema.gov. A search bar is present with the text "Enter keyword(s)". Below the header is a menu with categories: COMMUNITY DEVELOPMENT DEPARTMENT (344 Broadway), CLIMATE & ENERGY, ECONOMIC DEVELOPMENT, FACTS & MAPS, HOUSING, PARKS & PLAYGROUNDS, PLANNING & URBAN DESIGN, TRANSPORTATION, and ZONING & DEVELOPMENT.

The main content area is titled "Grand Junction Multi-use Path" and includes a breadcrumb trail: CDD > Projects > Grand Junction Multi-use Path. The text describes the path as a multi-use path running alongside existing tracks in the Grand Junction corridor from the Boston University Bridge to Somerville. It provides details on the path's width (14' with 2' buffers) and its purpose as a regional link connecting to the Somerville Community Path and the Allston I-90 Interchange project. A link is provided for a sign-up form to receive e-mail updates.

Below the text is a side-by-side comparison of the area: "1 current conditions" shows a brick building with a fireproof storage area, and "2 rendering of proposed path and uses" shows a rendering of the path with people walking and cycling. A map of Cambridge is shown with a callout for "CDD@344".

At the bottom of the page, there is a navigation bar with buttons for "The Latest", "Schedule", "Description", "Meeting Materials", "Historical Documents", and "Contact". A sidebar on the right contains "Quick Links" with dropdown menus for "I'd like to learn more about...", "Neighborhood or Square", and "Current Projects...". Below the map is a link to "Click the Map to Explore Cambridge" and a badge for "A 5-STAR Community and National Leader in Sustainability".



# THANK YOU

**Bill Deignan**, Transportation Program Manager  
**Andrew Reker**, Assistant Transportation Planner  
Cambridge Community Development Department  
[AREker@cambridgema.gov](mailto:AREker@cambridgema.gov)  
(617) 349-6959