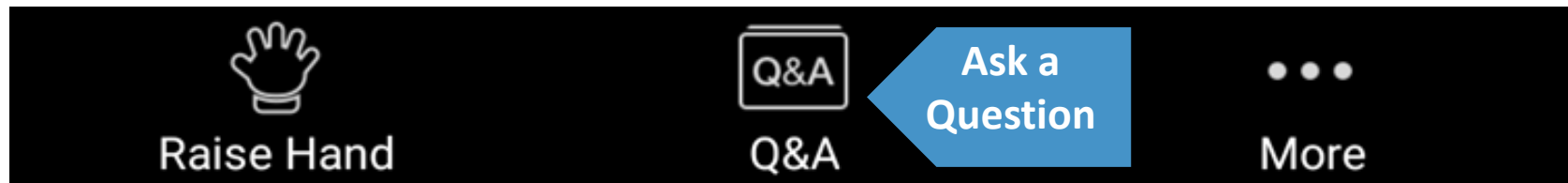
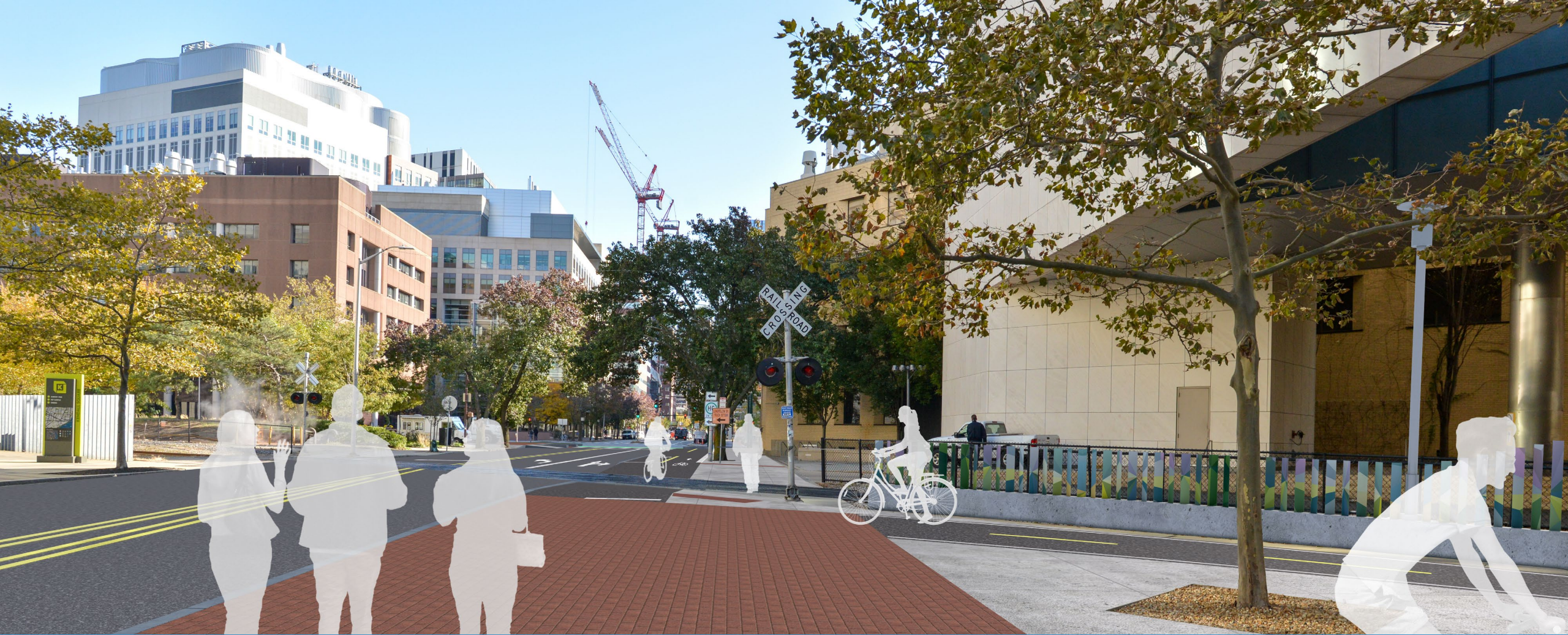


Virtual Meeting Instructions

- Working group members may speak and show webcam video
 - Use "Raise Hand" button during discussion
- Members of the public are muted and cannot show webcam video
- Public can write in questions or ask for assistance in Q&A Window
 - Questions may be submitted at any time and will be addressed, as time allows, during discussion/comment periods
- Participants will be removed for inappropriate behavior
- Technical support / Charlie Creagh (ccreagh@cambridgema.gov)

Bottom
Panel of
Zoom Screen





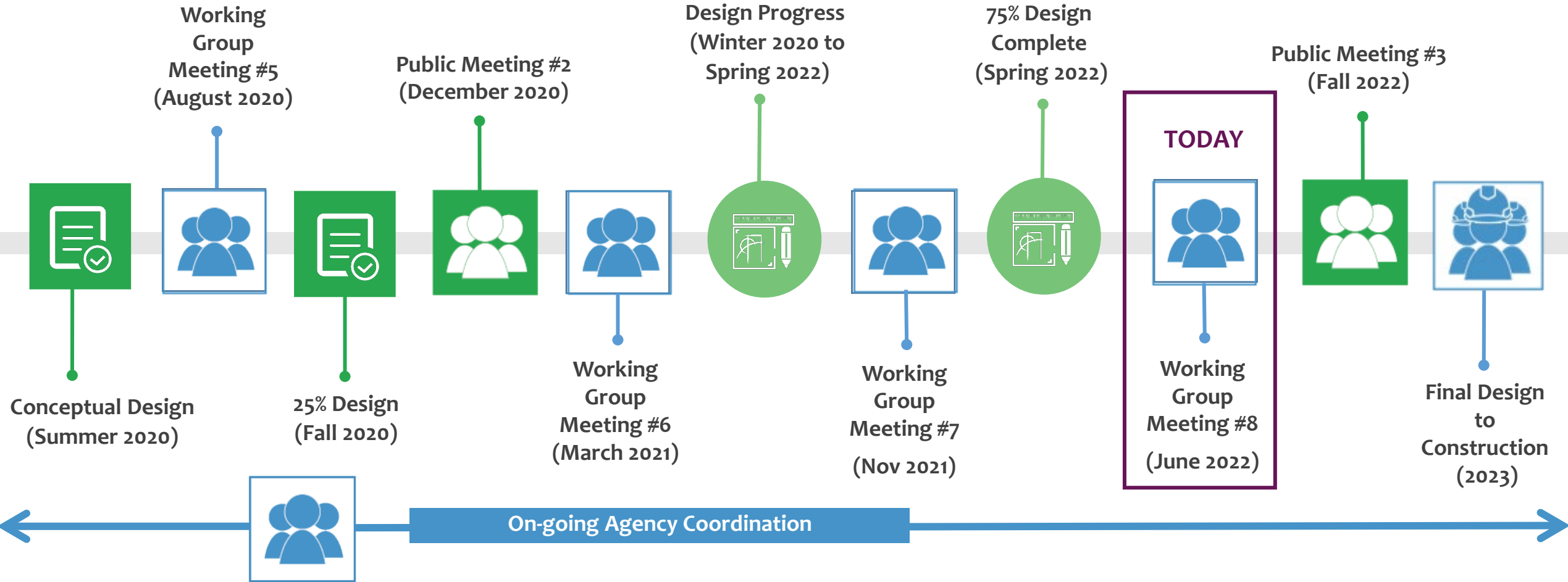
CITY OF CAMBRIDGE
GRAND JUNCTION MULTI-USE PATH DESIGN PROJECT
WORKING GROUP #8 – JUNE 22, 2022



MEETING AGENDA

Welcome!

- Project Schedule & Updates
- Design Updates:
 - Landscape and Planting Plan
 - Cambridge Street Pocket Park
 - Linden Park Neighborhood Connections
 - Wayfinding Plan
 - Mass Ave Path Crossing
- Overall design status and schedule update
- Working Group Discussion
- Public Comment
- Next Steps





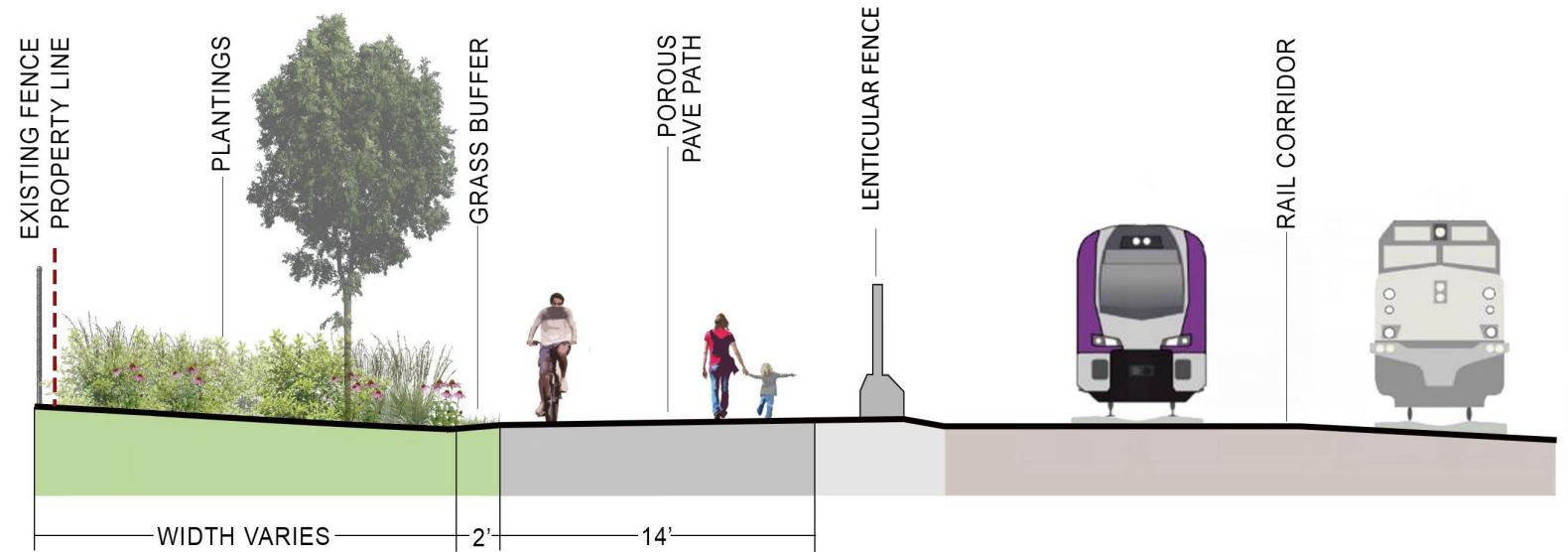
DESIGN UPDATES



LANDSCAPE & PLANTING PLAN

Considerations

- **Path Buffer** – 2' grass buffer (opposite side from tracks)
- **Narrow Corridor** – minimal room between edge of buffer and property line (width varies)
- **Utilities** – significant utilities overlap with open space
- **Ownership** – Abutter approval required for certain planting opportunities
- **Stormwater** – Promote GI
- **UFMP** – Cool Corridor
- **Vegetation Management**



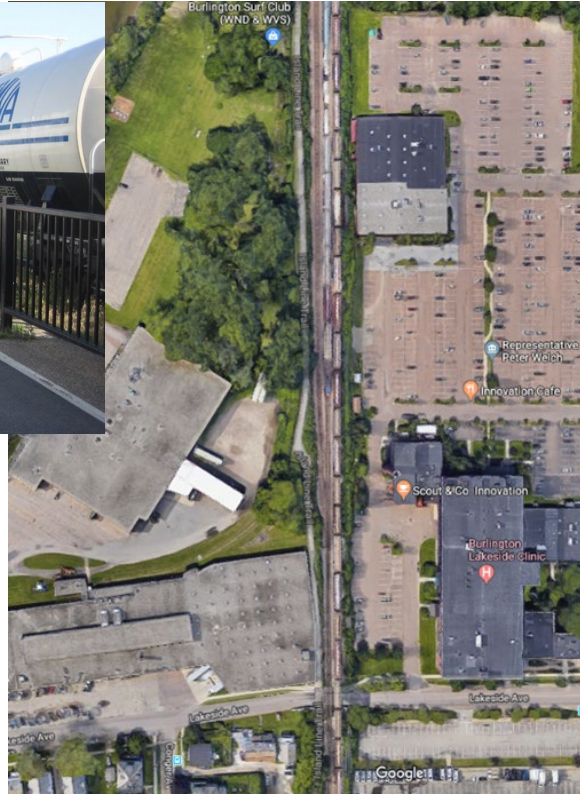
TYPICAL CORRIDOR SECTION

PHOTO 8 – LOOKING NORTHEAST

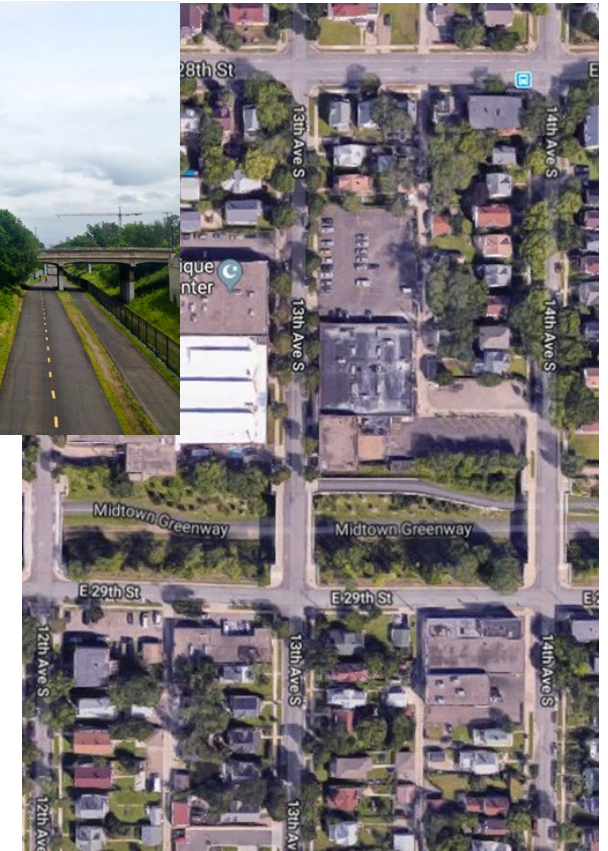
Urban Context Case Studies



Burlington
Greenway
Burlington, VT



Midtown
Greenway
Minneapolis,
MN



Goals

- **Maximize Canopy**
 - UFMP – Cool Corridor (Heat Island Reduction)
- **Maximize Ecosystem Function**
 - Native Species/ Plant Communities
 - Prioritize Pollinator Species
- **Support Green Infrastructure**
 - Bioretention Systems/Porous Paving
- **Create Recognizable Character**
 - Multi-Season Interest
- **Maintenance and Vegetation Management**













Approach

- Identify **trees to remain** (and those to be removed)
- Locate landscape opportunities for **green infrastructure**
 - Bioretention basins, bioswales, etc
- Locate **new tree** opportunities
 - Identify opportunities within and adjacent to the corridor
- Identify **shrub massing** opportunities
- Delineate **ground plane**
 - Lawn and perennial wildflowers and grasses



Design Updates

LANDSCAPE & PLANTING PLAN

	DECIDUOUS TREES TO REMAIN		TURF - SOD (PATH SHOULDER)
	EVERGREEN TO REMAIN		SHRUB PLANTING
	DECIDUOUS TREE		BIORETENTION BASIN PLANTINGS
	EVERGREEN TREE		BIT. CONCRETE PAVING (BY OTHERS)
	PERENNIAL SEED MIX		POROUS BITUMINOUS CONCRETE PAVING

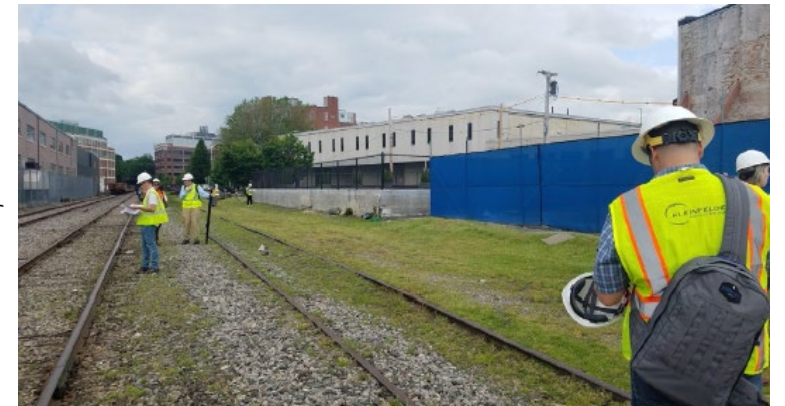
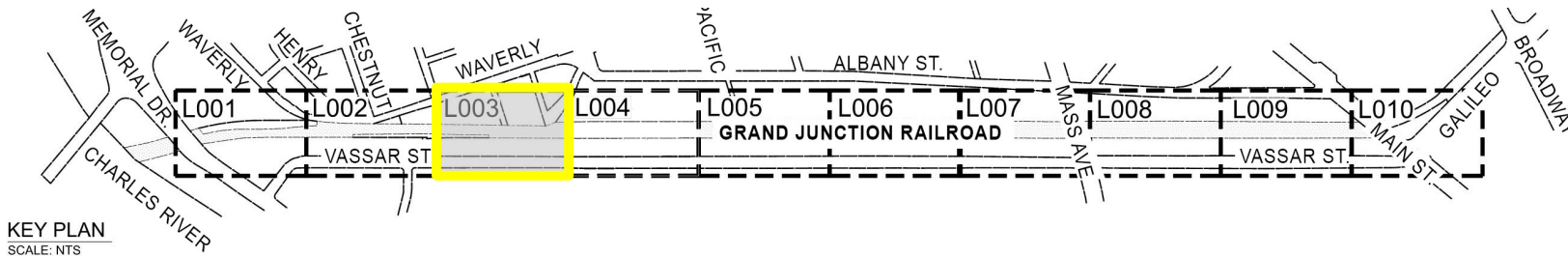
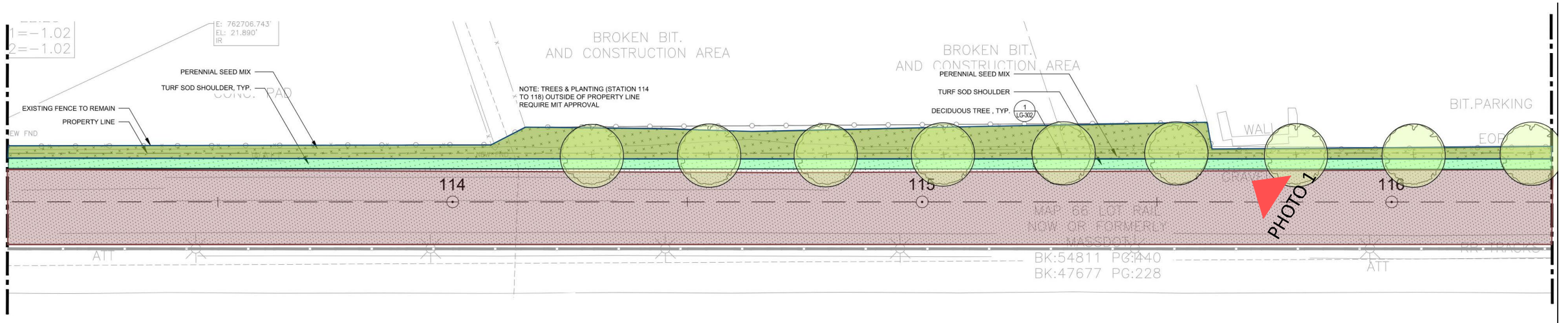












PHOTO 1 – LOOKING NORTHEAST

Design Updates

LANDSCAPE & PLANTING PLAN

	DECIDUOUS TREES TO REMAIN		TURF - SOD (PATH SHOULDER)
	EVERGREEN TO REMAIN		SHRUB PLANTING
	DECIDUOUS TREE		BIORETENTION BASIN PLANTINGS
	EVERGREEN TREE		BIT. CONCRETE PAVING (BY OTHERS)
	PERENNIAL SEED MIX		POROUS BITUMINOUS CONCRETE PAVING

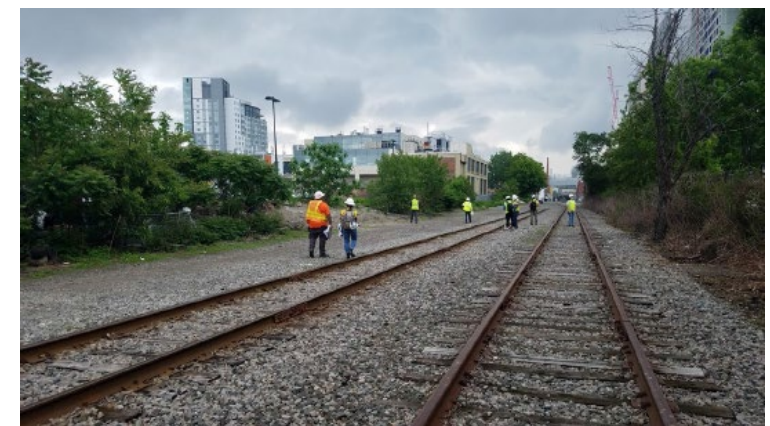
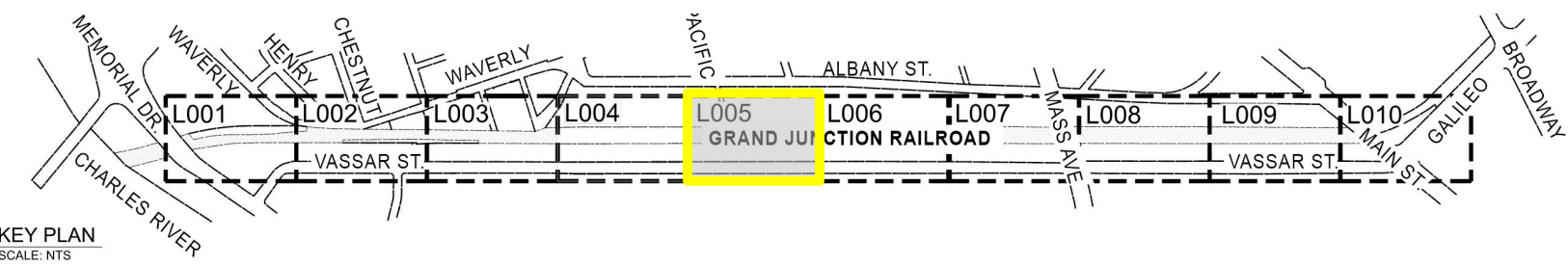
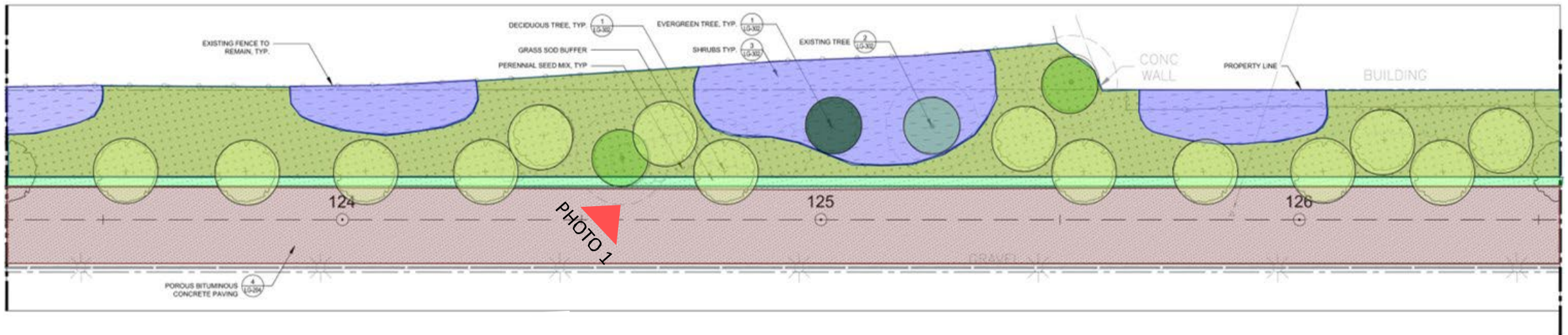


PHOTO 1 – LOOKING NORTHEAST



Design Updates LANDSCAPE & PLANTING PLAN

	DECIDUOUS TREES TO REMAIN		TURF - SOD (PATH SHOULDER)
	EVERGREEN TO REMAIN		SHRUB PLANTING
	DECIDUOUS TREE		BIORETENTION BASIN PLANTINGS
	EVERGREEN TREE		BIT. CONCRETE PAVING (BY OTHERS)
	PERENNIAL SEED MIX		POROUS BITUMINOUS CONCRETE PAVING

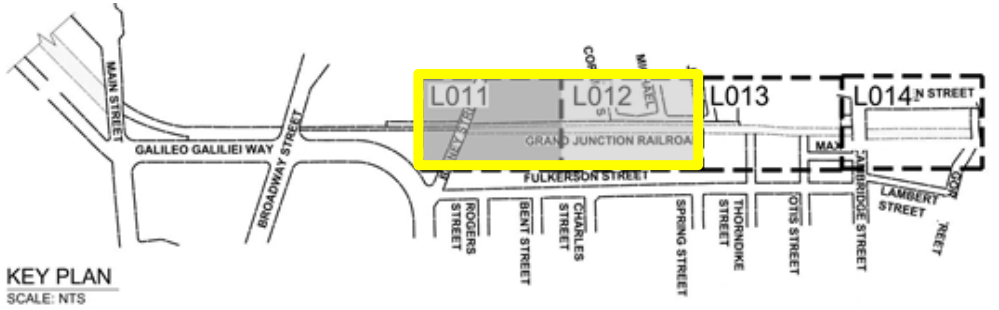
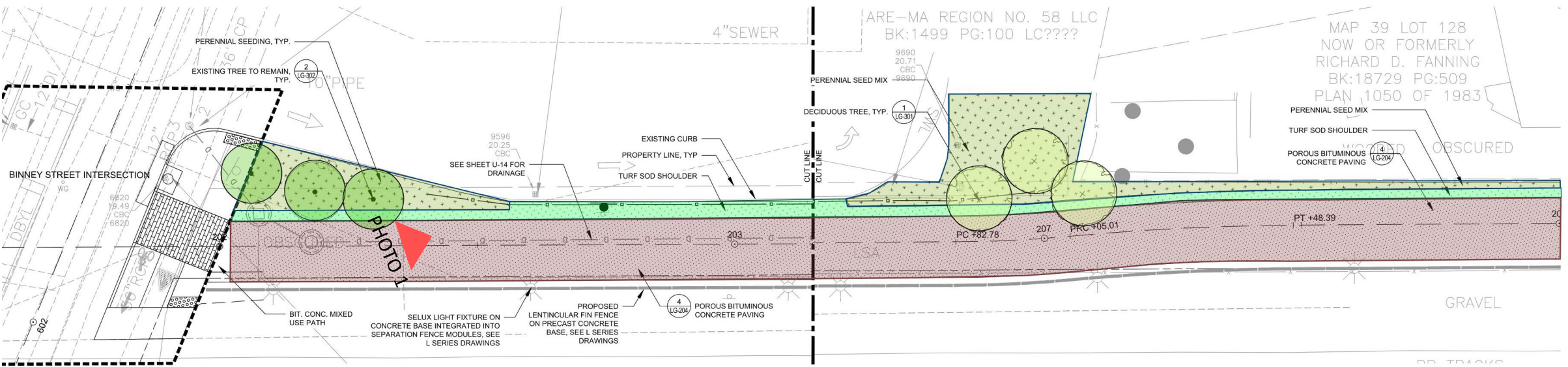


PHOTO 1 – LOOKING NORTH



CAMBRIDGE STREET POCKET PARK

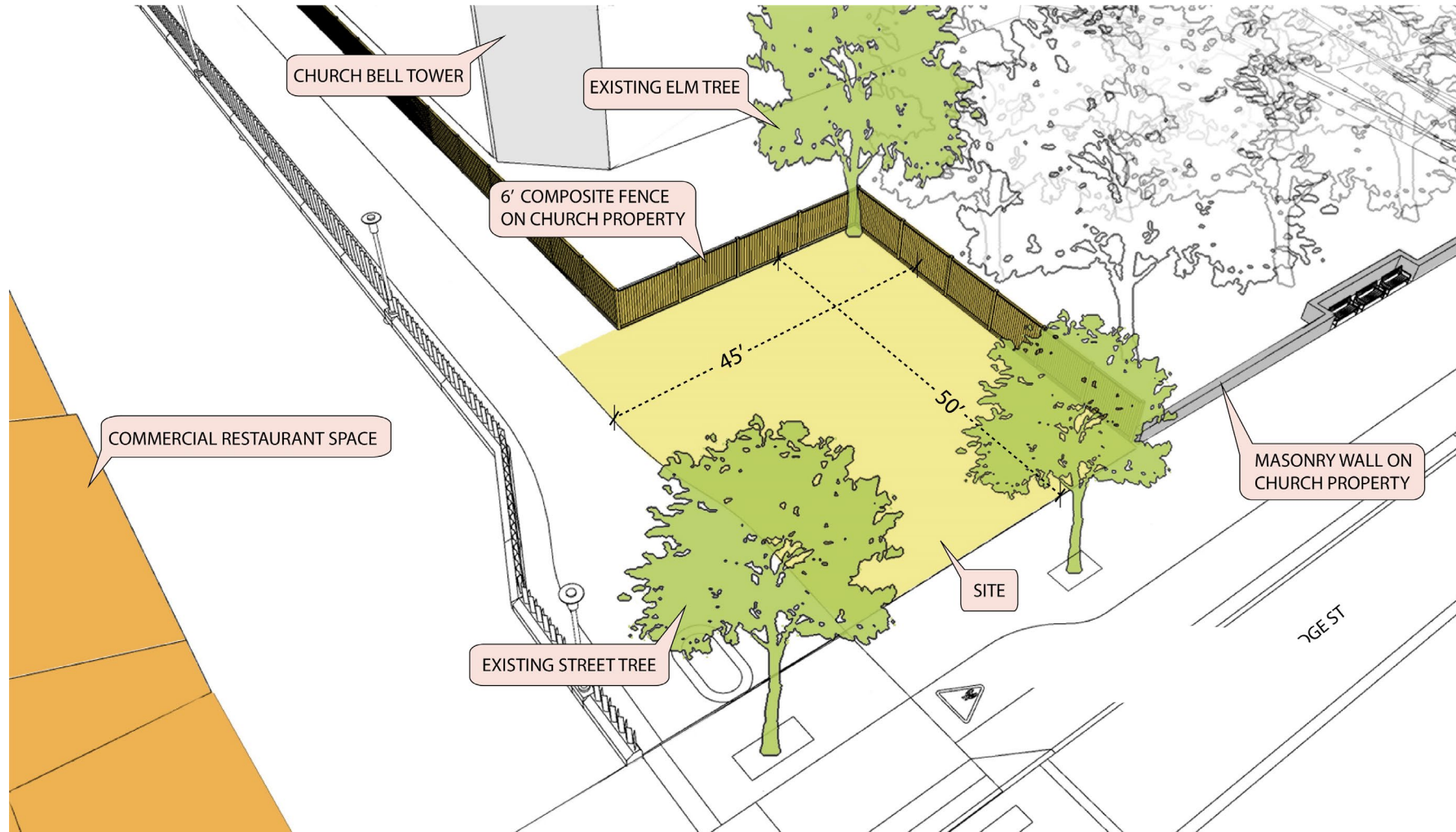
Design Concept Goals

- Neighborhood-scale open space for all ages that supports community
- Heat mitigation via shade trees, plantings, and possible mist element
- Safe space with open site lines

Design Direction from City & Working Group

- Curvilinear planters with benches
- Planters delineate edges at Cambridge Street and along MUP
- Low masonry wall along church yard at Cambridge Street wraps west edge of park
- Include rectangular arbor to provide shade with seating along south wall

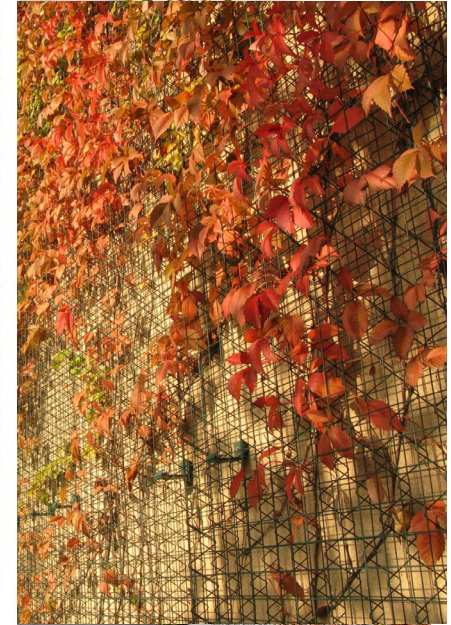
Existing Site Constraints



Park Features

Planting, seating, shade

- Shade trees for heat mitigation
- Perennial planting beds with an emphasis on pollinator-friendly species
- Vines planted along wall at the back of the arbor at south edge
- Planters and bench seating
- Trellis for shade



Park Features

Possible Mist Element

- Could provide opportunity for additional heat mitigation in a warming climate
- Cambridge St corridor has been identified as particularly hot



Proposed Conditions:

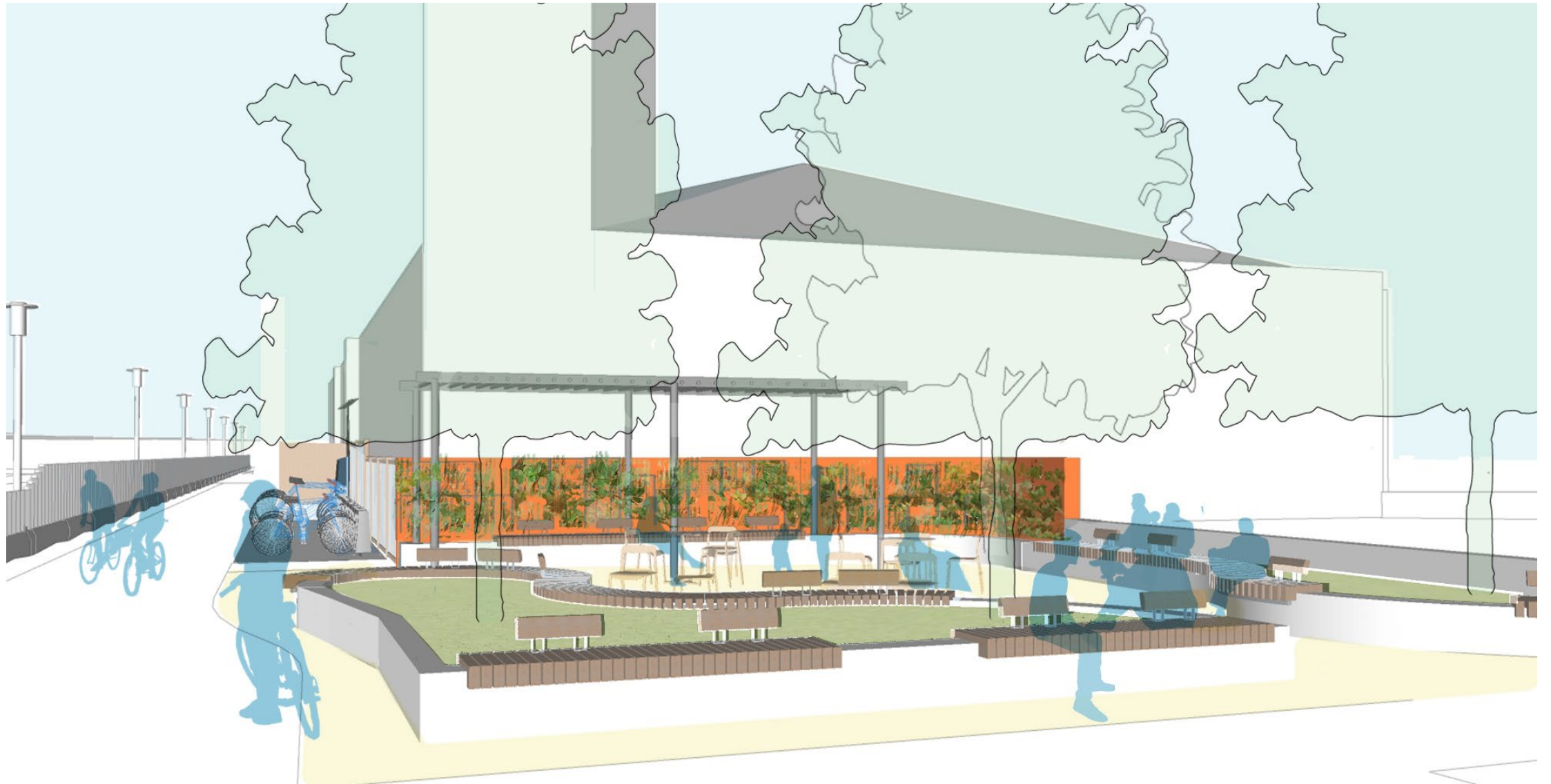
- Arbor along south wall with vines
- Three shade trees
- Planting beds for perennials and vines
- Benches, movable chairs and café tables
- Low wall to match the church's existing masonry wall height on west side (City is contacting church to coordinate)



Facing West



From Cambridge Street



CAMBRIDGE ST. POCKET PARK

Facing East



Aerial View



Areas for Continued Design Development

- Trellis design – materiality, height/relationship to wall, structural design, relationship to existing tree
- Mist station – include or not? Research supporting infrastructure, diameter of influence of mist
- Ground plane / paving materials
- Additional amenities at park – drinking fountain, lighting, charging station, trash/recycling



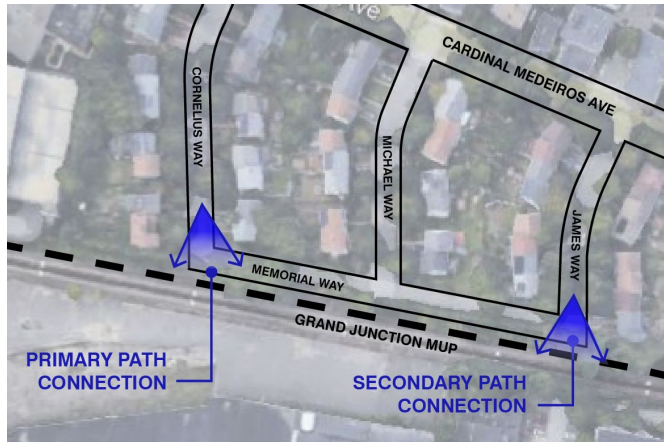
DISCUSSION



LINDEN PARK NEIGHBORHOOD CONNECTIONS

Linden Park Neighborhood Connection

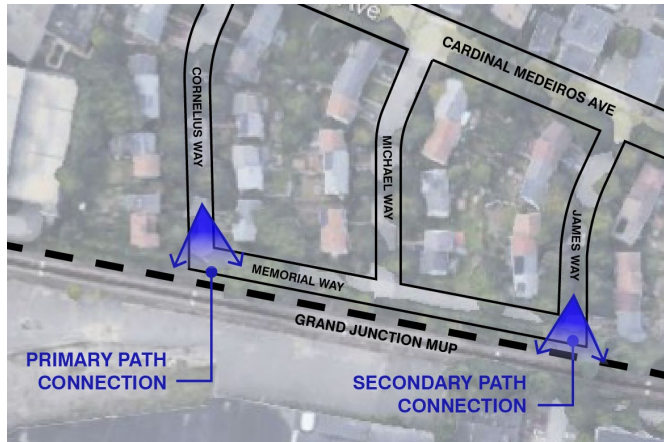
View 1: Primary Path Connection
(Existing Conditions)



Linden Park Neighborhood Connection

View 1: Primary Path @
Cornelius
Way Connection (Proposed)

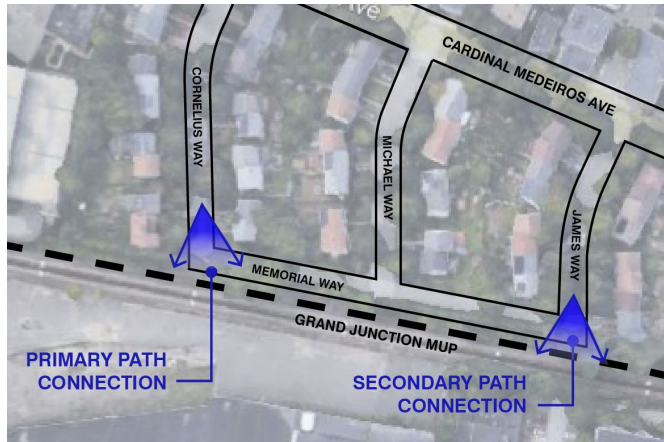
- includes new fence
- includes planting
- includes signage



Linden Park Neighborhood Connection

View 2: Secondary Path Connection @ James Way

- includes new fence
- includes planting





WAYFINDING

Approach

- Principles
- Functional signage
- Gateway



Principles

- Keep it simple
 - Consider trail characteristics and space
- Be consistent
 - Establish common trail branding such as colors, logos, fonts, materials, placement
- Wayfinding supports placemaking
- Keep people in motion
- Design for the inexperienced user



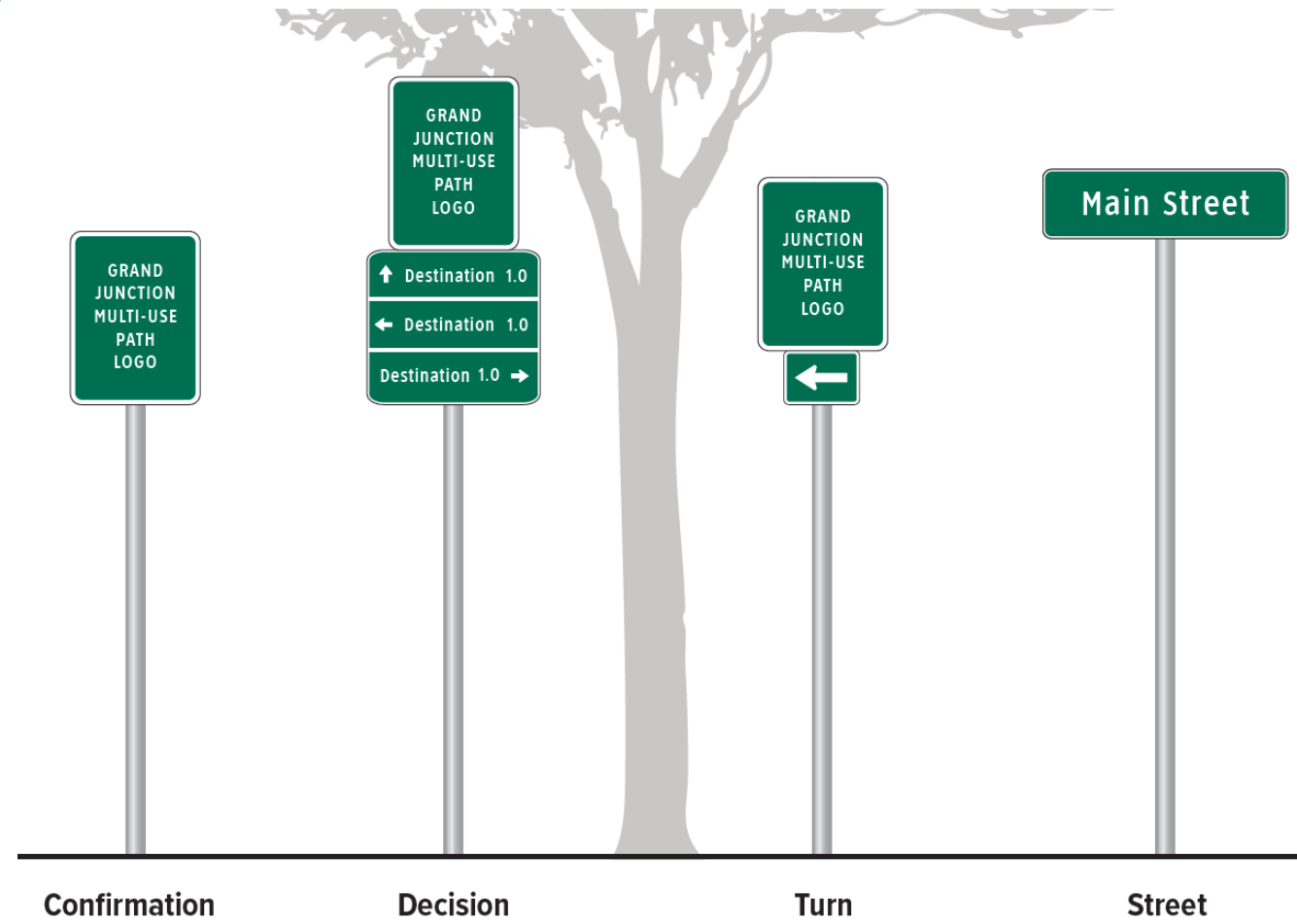
Functional

- Trail Orientation
- Route decisions
- Route monitoring/confirming
- Destination recognition
- Safety

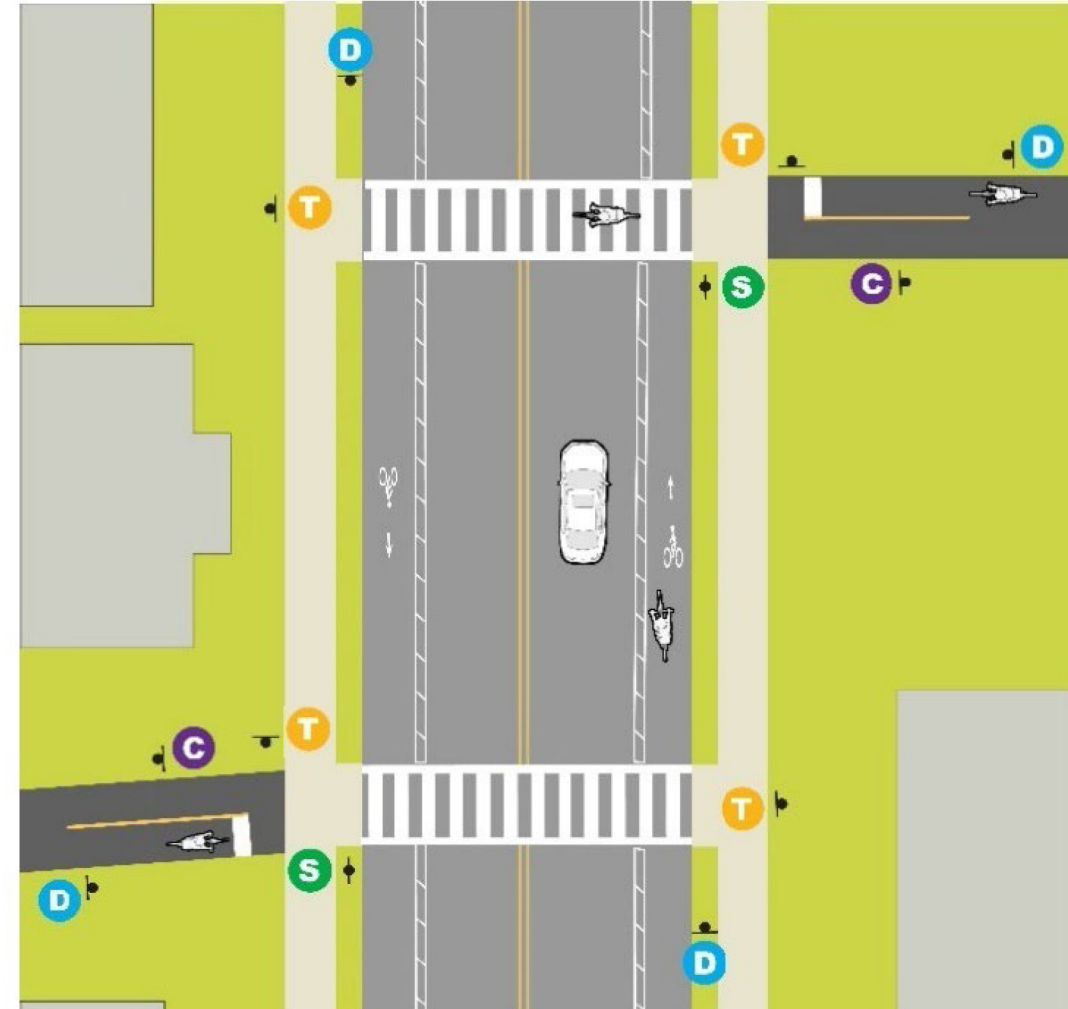
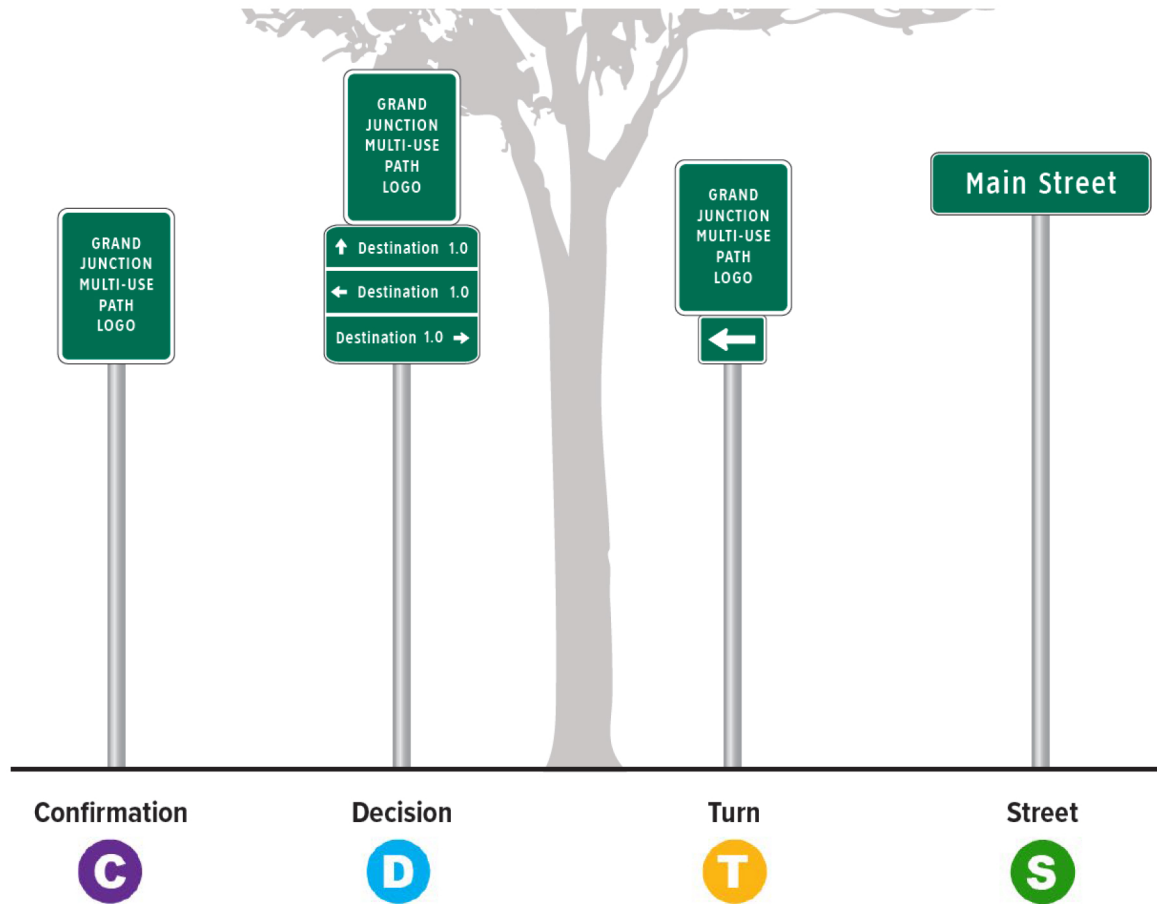


Functional Sign Family

- Trail confirmation signs
- Trail turn signs
- Destination/decision signs
- Street/trail name signs
- Jurisdictional boundary
- Etiquette/trail rules
- MIT Emergency/locator system

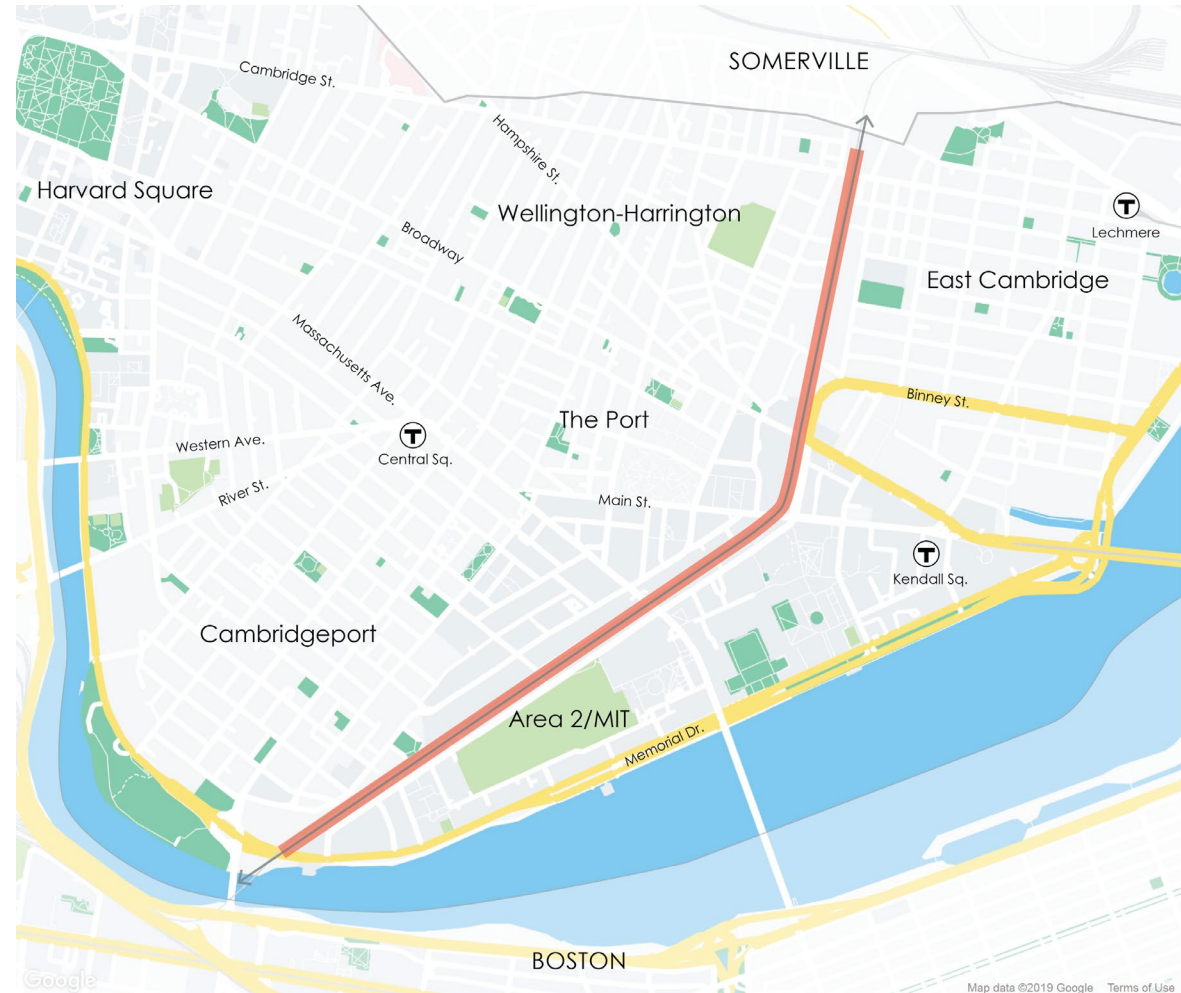


Functional Sign Placement



Destination/Decision Signs

- East Cambridge
- Union Square (T)
- Central Square (T)
- Kendall Square (T)
- Charles River Path
- BU Bridge
- Mass Ave Bridge
- Fort Washington Park
- Vassar Street
- Community Path



Gateway Markers

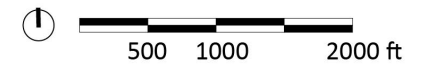


Gateway Markers



Legend

- Grand Junction Corridor
- ★ Gateway Marker





DISCUSSION



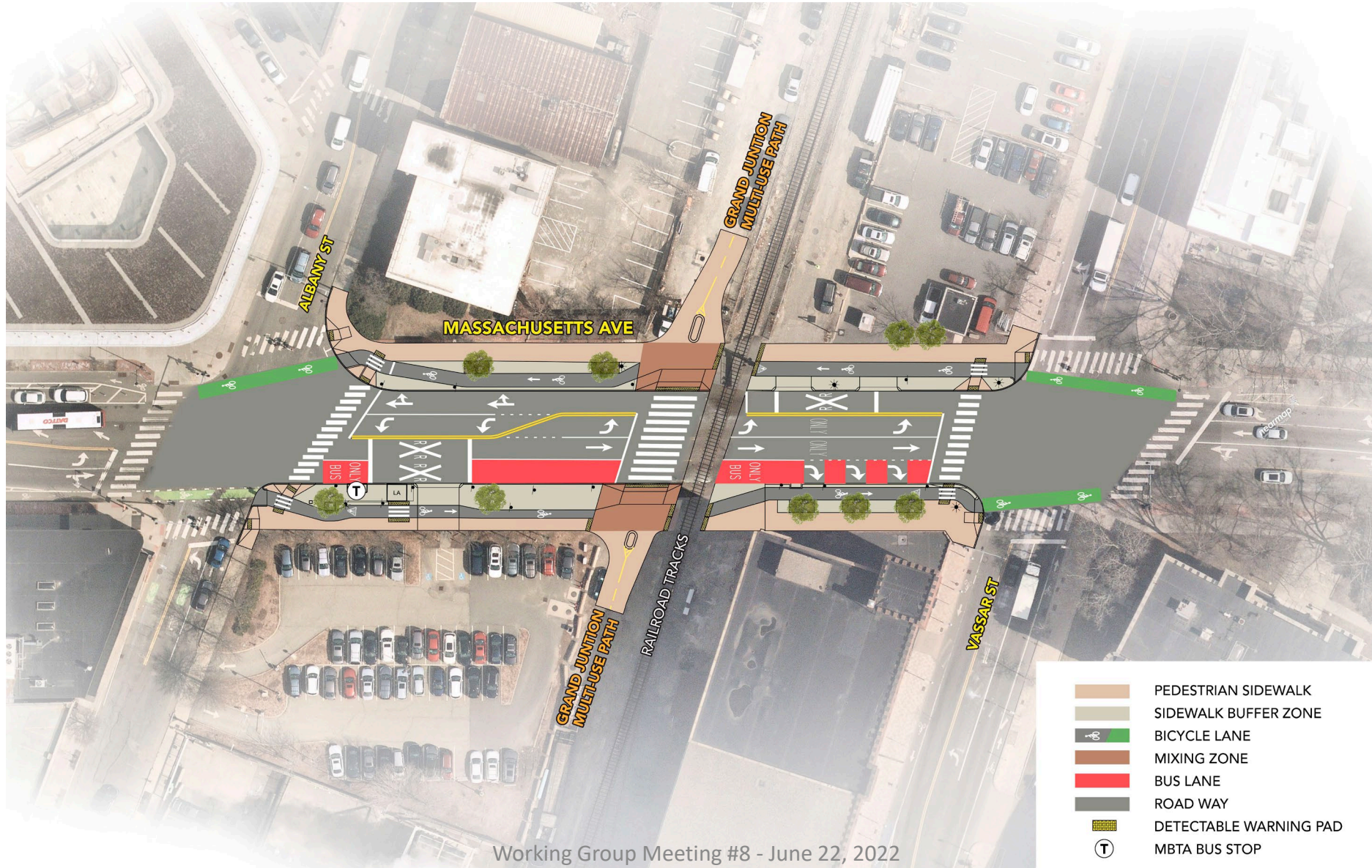
PATH CROSSINGS

Mass Ave Crossing

- Mass Ave Design
 - MBTA Bus lane
 - Two general vehicle lanes
 - Left-Turn lanes
 - Separated Bicycle Lanes
- Bus Stop Locations to be determined



PATH CROSSINGS

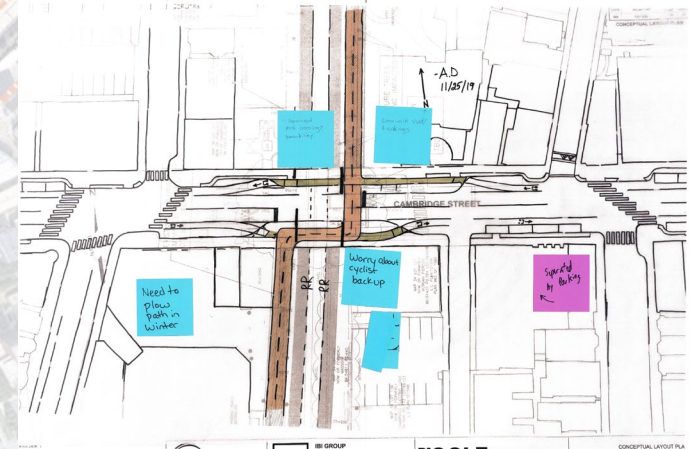




DESIGN STATUS

Design Status and Schedule Update

- 75% Design Package was submitted to Cambridge, MIT, and MassDOT in May 2022 – currently under review
- Additional feedback from agency review and Working Group
- Advancing to 100% design – public meeting Fall 2022



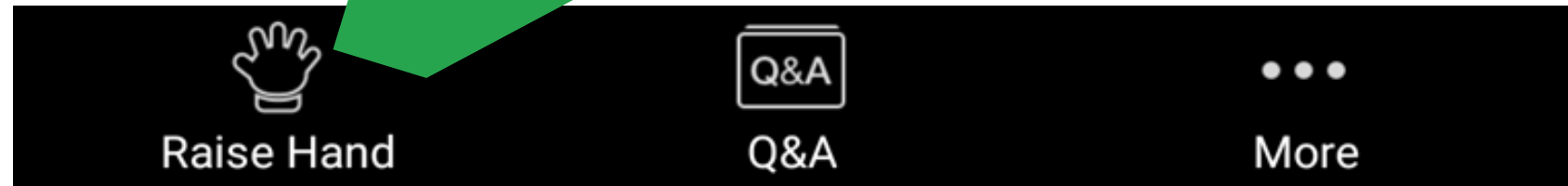


WORKING GROUP DISCUSSION

"Raise hand" to speak

- If you wish to speak, click on "Raise Hand" in the Zoom application
 - On the telephone, enter * 9 on the dial pad
- Staff will call your name or phone number to acknowledge
- Before starting, please state your name and staff will confirm that we can hear you
- You will have **two minutes** to make your comment

Bottom
Panel of
Zoom Screen



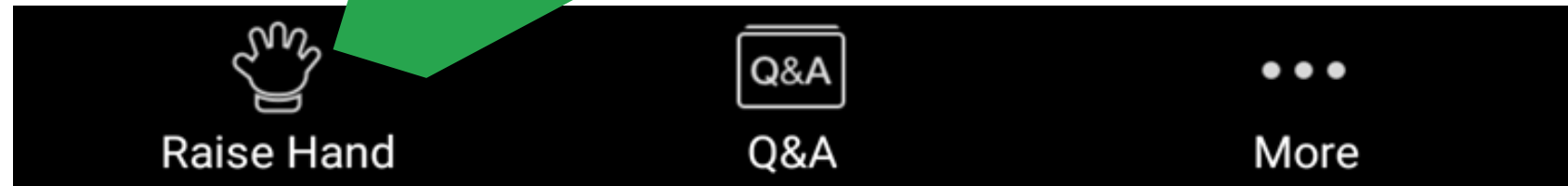


PUBLIC COMMENT

"Raise hand" to speak

- If you wish to speak, click on "Raise Hand" in the Zoom application
 - On the telephone, enter * 9 on the dial pad
- Staff will call your name or phone number to acknowledge
- Before starting, please state your name and staff will confirm that we can hear you
- You will have **two minutes** to make your comment

Bottom
Panel of
Zoom Screen





NEXT STEPS

Next Meetings

- Public Meeting Fall 2022

Find us online

CambridgeMA.gov/GrandJunction

- Project Updates
- Design Working Group materials
- Public Meeting materials
- Historical documents



CAMBRIDGE
CDD@344

Community Development Calendar | Projects | Publications | Forms | Contact Us | cambridgema.gov

Text Size: A A A Enter keyword(s) [Search]

COMMUNITY DEVELOPMENT DEPARTMENT 344 Broadway | CLIMATE & ENERGY | ECONOMIC DEVELOPMENT | FACTS & MAPS | HOUSING | PARKS & PLAYGROUNDS | PLANNING & URBAN DESIGN | TRANSPORTATION | ZONING & DEVELOPMENT

CDD > Projects > Grand Junction Multi-use Path

Grand Junction Multi-use Path

The Grand Junction Multi-use Path is proposed to be a multi-use path running alongside the existing tracks in the Grand Junction corridor from the Boston University Bridge to Somerville. The desired width of the path is 14' with 2' buffers (a total of 18'). It will provide a continuous pathway for residents, schoolchildren, workers and visitors to stroll, jog, or bike along a linear path connecting several neighborhoods with each other, with commercial areas, and with regional resources such as the Charles River. The intent is to provide an important regional link, connecting to the Somerville Community Path being constructed as part of the Green line Extension and to pathways proposed in the Allston I-90 Interchange project. Within a half-mile of the Grand Junction corridor are 42% (49,000) of the jobs and 31% (33,000) of the residents in Cambridge. It is believed that the path can be created while maintaining current rail operations and accommodating potential future use of the corridor for passenger service.

[Click here for our sign-up form to receive e-mail updates about this project.](#)



Image courtesy of the Friends of the Grand Junction Path

The Latest | Schedule | Description | Meeting Materials | Historical Documents | Contact

Quick Links

I'd like to learn more about...

Select a Topic [Dropdown]

Neighborhood or Square

Select One [Dropdown]

Current Projects...

Select One [Dropdown]



[Click the Map to Explore Cambridge](#)

A 5-STAR Community and National Leader in Sustainability



THANK YOU

Bill Deignan, Transportation Program Manager

Charlie Creagh, Transportation Planner, Cambridge
Community Development Department

Ccreagh@cambridgema.gov

(617) 349-9167