



WORKING GROUP MEETING #8: WEDNESDAY, JUNE 22, 2022, 5:30 – 7:00 PM

The Grand Junction Multi-Use Path is in the final design phase. It will serve as an important connection for many neighborhoods in eastern Cambridge and regionally. Visit www.cambridgema.gov/grandjunction for updates.

At this Working Group meeting, we'll provide updates on the following:

- Cambridge Street pocket park design update
- Landscaping and planting plan
- Wayfinding plan
- Linden Park Neighborhood connections
- Mass Ave Crossing
- Overall design and schedule update

Working Group meetings are open to the public. The meeting will take place from 5:30 PM to 7:00 PM.

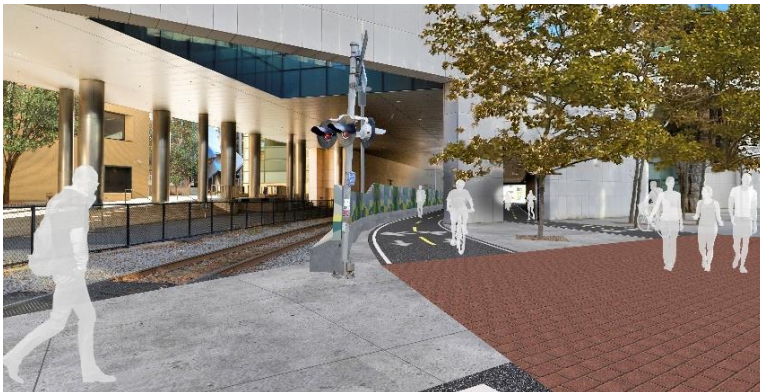
Grand Junction Multi-Use Path

Working Group Meeting #8

Wednesday, June 22, 2022 5:30 – 7:00 PM

To register for this virtual meeting, visit:

https://cambridgema.zoom.us/webinar/register/WN_1kY3Ud45TTipb9IJfbxP7Q



Above: Renderings of proposed Grand Junction Multi-Use Path under MIT Brain & Cognitive Sciences building (left) and at Gore Street/Medford Street (right)

For more information on this project or to be added to the project email list, please visit:

www.cambridgema.gov/grandjunction.

If you have any questions about this project or the upcoming meeting, contact Bill Deignan at

wdeignan@cambridgema.gov or 617-349-4632.

The City of Cambridge does not discriminate on the basis of disability. The City will provide auxiliary aids and services, written materials in alternative format and responsible modifications in policies and procedures to qualified individuals with disabilities upon request given 48-hour notice.