

# WATERTOWN-CAMBRIDGE GREENWAY PROJECT



**DCR Public Meeting – 25% Design**

**Monday, November 30, 2015  
The Atrium School  
69 Grove St, Watertown, MA**



# Commonwealth of Massachusetts

Governor

**Charles D. Baker**

Lieutenant Governor

**Karyn E. Polito**

Energy and Environmental Secretary

**Matthew A. Beaton**

Department of Conservation and Recreation Acting Commissioner

**Daniel P. Sieger**



## **DCR Mission Statement**

*To protect, promote and enhance our common  
wealth of natural, cultural and recreational  
resources for the well being of all*

## **Tonight's Meeting - Purpose**

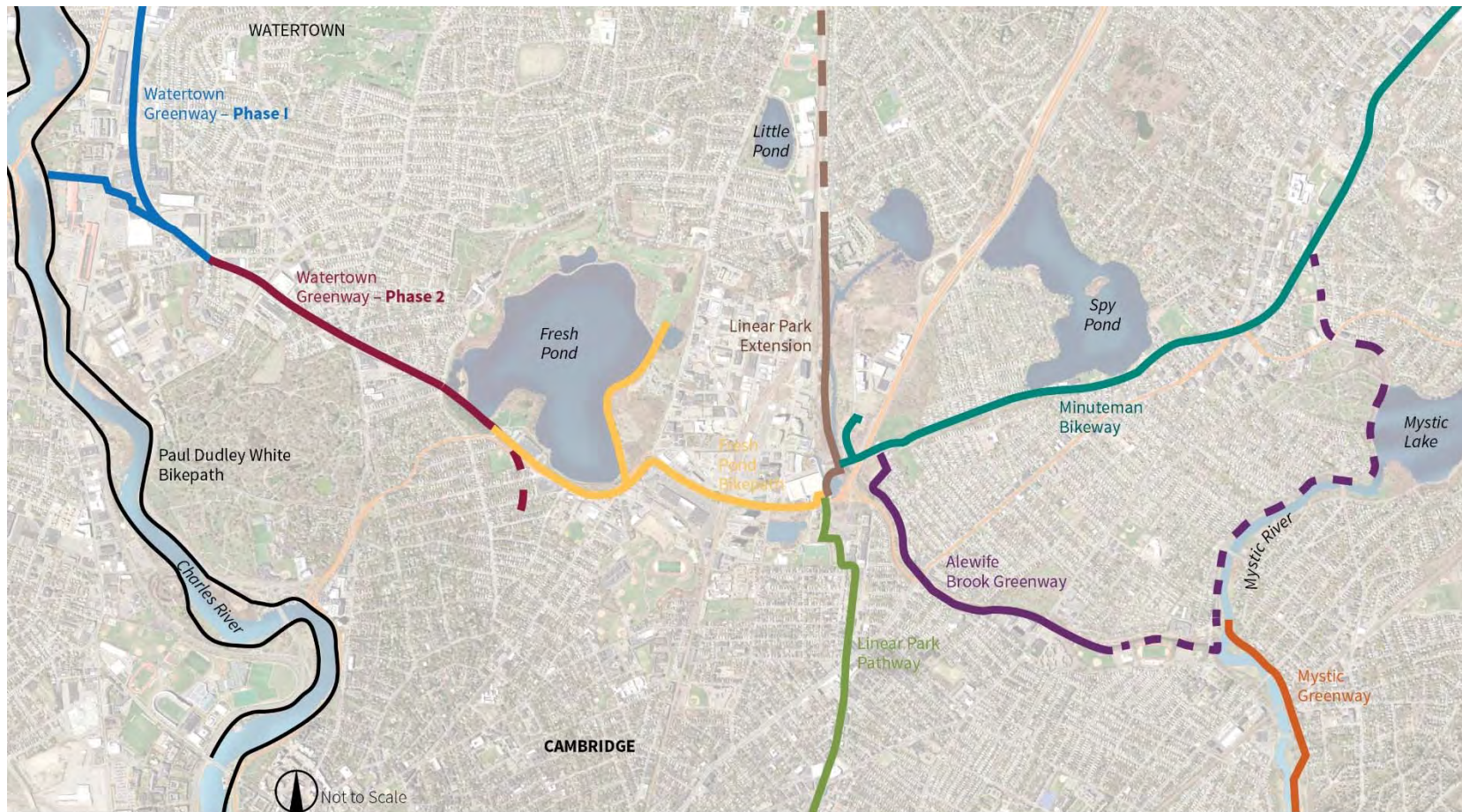
- Present the public with an update on the design process (25% design stage)
- To obtain public input.

## Watertown - Cambridge Greenway Vision

- Creation of a multi-use greenway, using the former B&M railroad right-of-way extending from Concord Avenue in Cambridge, through the Fresh Pond Reservation, under Huron Avenue and Mount Auburn Street and into Watertown.
- Completion of an important regional connection linking the Charles River path system, the Minuteman Bikeway, the Alewife Greenway and the Mystic River Reservation into an interconnected off-road pathway network.

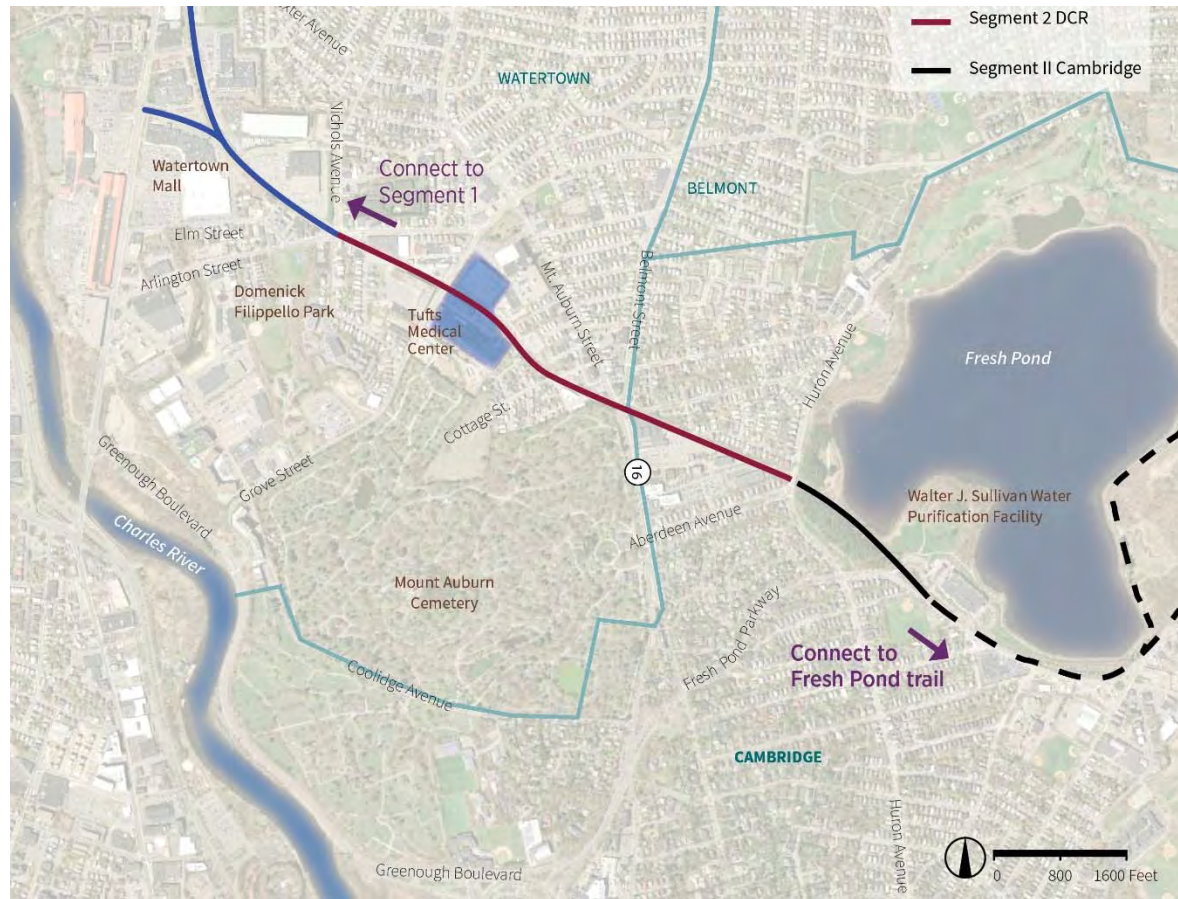


# Regional Bicycle Map





# Segment 2



- DCR and the City of Cambridge acquired the land for Segment 2 in May 2013.

## Design Team



VHB – Greenway Survey &  
Design



CRJA – Landscape Design  
& Planting



BR+A – Mt Auburn St  
Tunnel Lighting



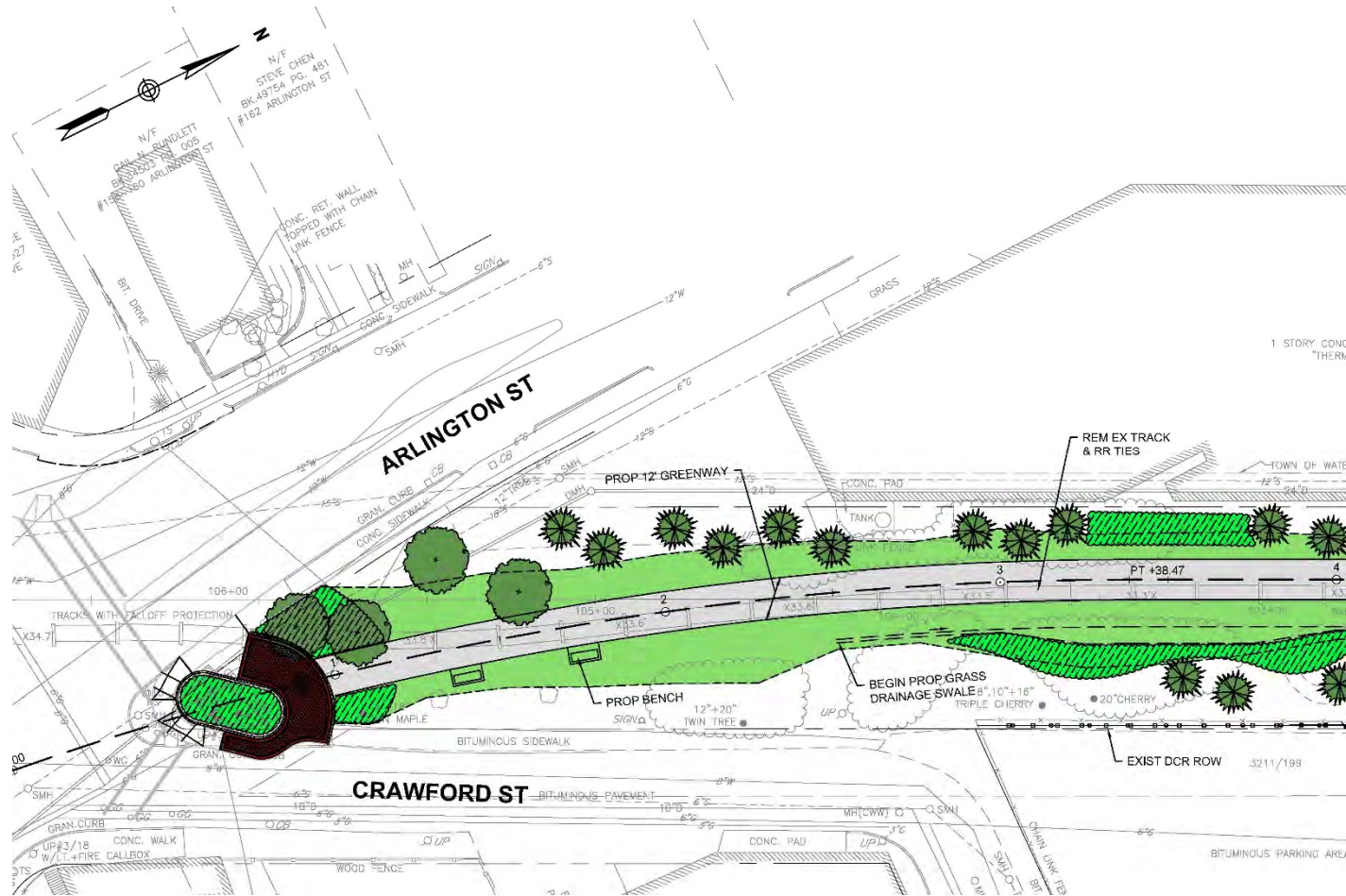
# Segment 2







# Arlington Street



LT2



MASSACHUSETTS DEPARTMENT OF  
CONSERVATION AND RECREATION

# Cottage Street







LT2



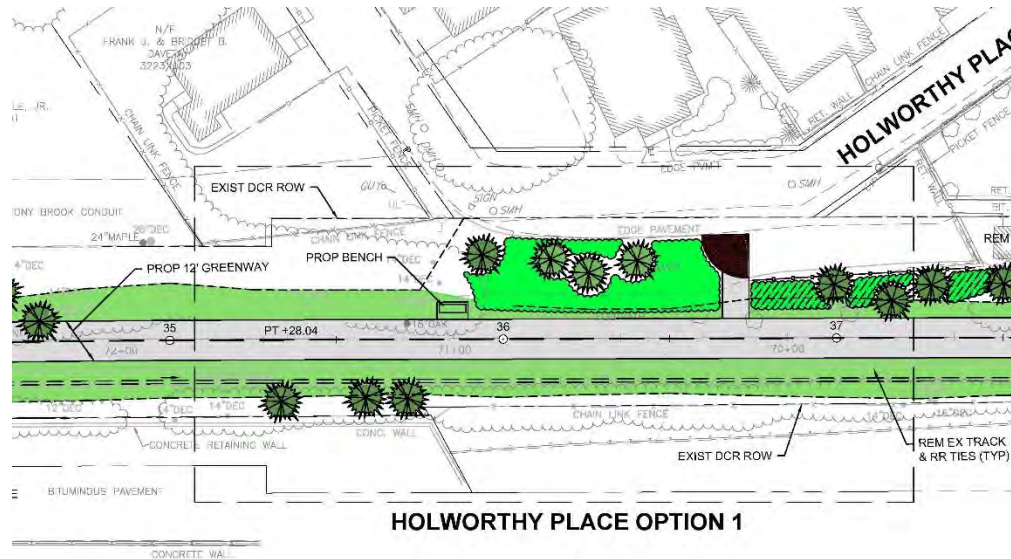
MASSACHUSETTS DEPARTMENT OF  
CONSERVATION AND RECREATION

# Holworthy Place

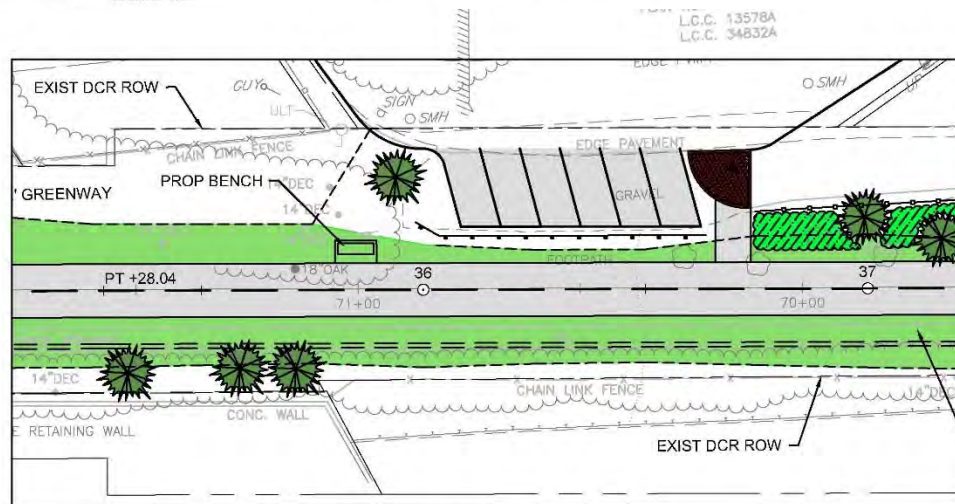




# Holworthy Place



HOLWORTHY PLACE OPTION 1



HOLWORTHY PLACE OPTION 2

# Water Purification Facility Entrance





# Water Purification Facility Entrance



## Project Design Elements

- 16 foot wide path (12 feet paved, with two-foot shoulders)
- Multi-use path, ADA compliant
- 3 feet clear width from vertical obstructions
- Grass drainage swales
- Selective vegetation removal, planting, Landscape and interpretive elements (tbd at 75% design)
- Underpass lighting at Mount Auburn Bridge

# Project Design Elements





## **Cambridge Review Process for Design – Fall 2015/Spring 2016**

- Staff Interdepartmental Working Group Review
- Review by: Fresh Pond Master Plan Advisory Committee, Bicycle Committee, Pedestrian Committee
- Review and Approval by Water Board
- Review and Approval by Conservation Commission.



## Design & Construction Schedule

- 50% design of Greenway to be completed – February 2016
- Environmental permitting: NOI to Cambridge Conservation Commission & PNF to Mass Historic – February 2016
- Next Public Meeting (at 75% Design) – March 2016
- State Highway Access permit for Bridges – Spring/Summer 2016
- Design scheduled to be completed by Spring/Summer 2016
- Construction to begin Fall 2016 (pending funding availability.)

## Additional Information

**For more information:**

<http://www.mass.gov/eea/agencies/dcr/public-outreach/public-meetings/>

**If you have comments or suggestions on this project:**

*Submit online:*

<http://www.mass.gov/eea/agencies/dcr/public-outreach/submit-public-comments/>

*Write:* Department of Conservation and Recreation  
Office of Public Outreach  
251 Causeway Street, Suite 600  
Boston, MA 02114

*Deadline:* **Tuesday, December 22, 2015**

*Note:* Public comments submitted to DCR may be posted on the DCR website in their entirety.

**If you have questions or concerns or wish to subscribe to a DCR general information or project-related listserv:** contact DCR's Office of Community Relations at 617-626-4973 or [Mass.Parks@state.ma.us](mailto:Mass.Parks@state.ma.us).