

Envision Cambridge

Update to Transit Advisory Committee

November 2, 2016



What is Envision Cambridge?

- Comprehensive planning process
- Establish vision for future of Cambridge
- Recommendations, strategies, actions toward that vision
- Cross-cutting between traditional planning disciplines
- Working in parallel and coordination with ongoing efforts
- Early focus on Alewife area

What we've been working on

- Outreach, listening, and visioning to establish vision and core values
- Understand existing conditions and assess challenges and opportunities toward preliminary goals
- Alewife district planning



* Community engagement integrated into every phase.

Vision

Cambridge is a forward-thinking, welcoming, and diverse city. We enjoy a high quality of life and thrive in a sustainable, inclusive, and connected community.

The Future

Envision is a three process comprehensive more livable and equitable future.

With input from the community, Cambridge is creating a shared vision for a better future.

Join the conversation at envision.cambridge.gov

Our Vision

Cambridge is a forward-thinking, welcoming, and diverse city. We enjoy a high quality of life and thrive in a sustainable, inclusive, and connected community.

Core Values

- Livability**
We value a vibrant built and natural environment and support sustainable transportation with affordable and convenient access to daily needs and recreational resources.
- Sustainability and Resilience**
We take responsible action to reduce our impact on the environment and build a resilient city and strong community.
- Diversity and Equity**
We are a welcoming community that celebrates our diversity and ensures access to affordable housing choices and opportunities to succeed.
- Community Health and Wellbeing**
We promote healthy and active lifestyles in a supportive, safe community with diverse opportunities to connect with our neighbors and engage in civic life.
- Economic Opportunity**
We provide opportunity and stability through access to quality jobs, workforce development and training, and livable wages that support high level of services.
- Learning**
We embrace lifelong learning and celebrate the pursuit of knowledge, and our culturally rich and creative community.

© 2014 Cambridge Planning Department

Core Values

- *Livability*
- *Diversity and Equity*
- *Economic Opportunity*
- *Sustainability and Resilience*
- *Community Health and Wellbeing*
- *Learning*

The Plan

Envision Cambridge is a three-year public process to develop a comprehensive plan for a more livable, sustainable, and equitable city.

With input from the community, Envision Cambridge has developed a shared vision around six core values for the city's future.

Join the conversation at envision.cambridgema.gov

Engagement by Numbers!

- 2,510** People reached with the mobile engagement station
- 1,706** Online and in-person survey responses
- 2,372** Social media interactions
- 211** Workshop attendees
- 119** Participants in focus groups with hard-to-reach populations
- 16** Public meetings, including workshops, panels, and working group discussions

Engagement summary as of July 2016. For a full report, visit the documents tab at envision.cambridgema.gov/documents/#summaries

ENVISION CAMBRIDGE

ENVISION CAMBRIDGE Survey 04: Core Values

Which aspects of each core value are most important to you?

Livability _____

Diversity and Equity _____

Economic Opportunity _____

Sustainability and Resilience _____

Community Health and Wellbeing _____

Learning _____

ENVISION CAMBRIDGE Survey 04: Vision

What is the most important thing that Cambridge should be in the future?

What does this vision mean for your neighborhood?

Name: _____

Email: _____

Neighborhood: _____

Sign up to receive email updates

Yes No

Key Planning Topics

- *Community Interaction*
- *Housing*
- *Economy*
- *Urban Form*
- *Climate and the Environment*
- *Mobility*

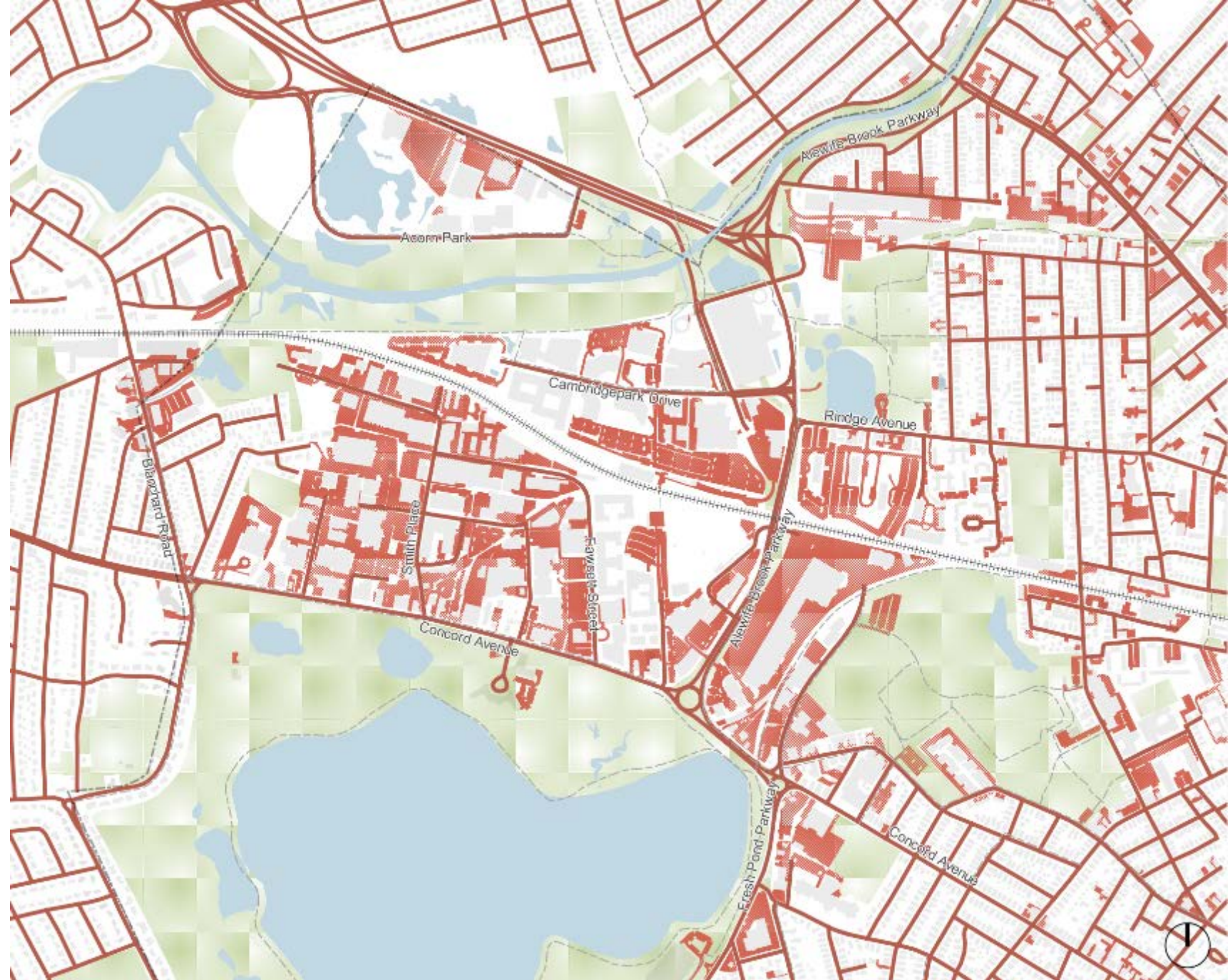
Alewife District Planning

- Early focus area of planning process
- **January/February:** Working group meetings and workshop on scenarios
- **March/April:** Development of recommendations based on scenarios

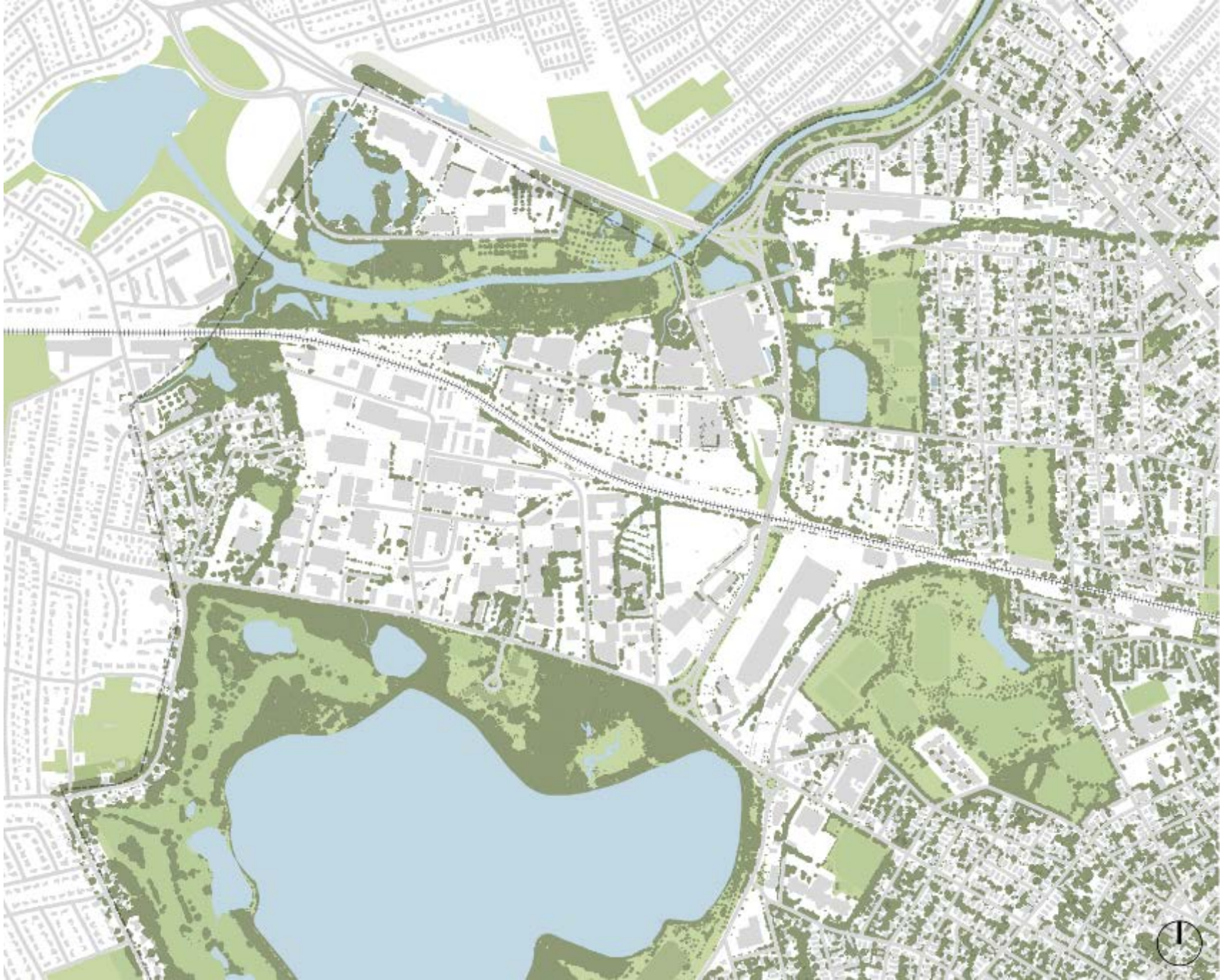
Surface Parking Lots and Paved Streets

The following slides were initially presented at the 2016-09-15 Alewife Working Group Meeting.

Full presentation available at envision.cambridgema.gov (under Documents header)

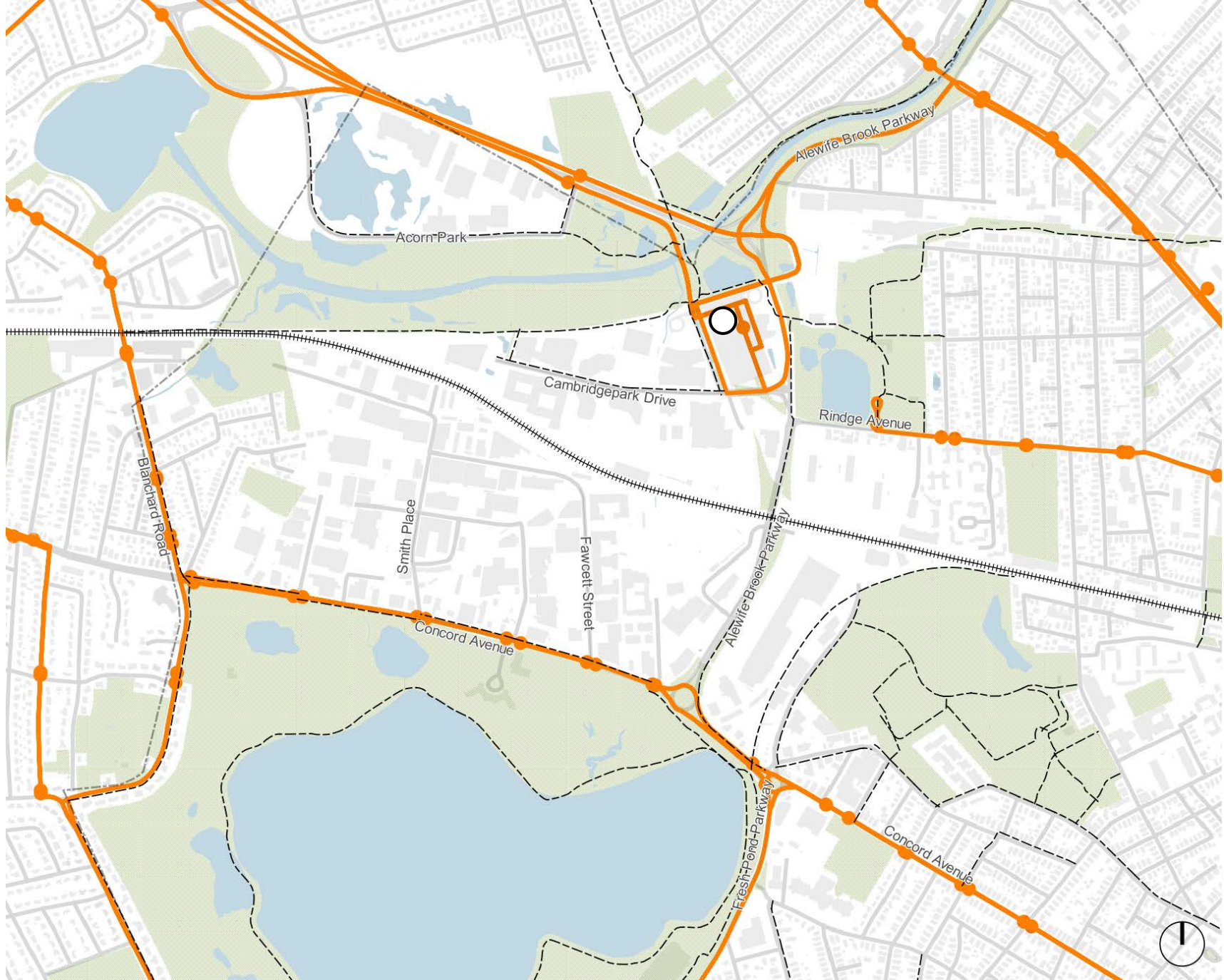


Tree canopy



Sustainable Transportation Infrastructure

- Transit**
-  MBTA Alewife Station
 -  Commuter Rail
 -  MBTA Bus
 -  MBTA Bus stops
 -  Bike Lane



Intersection density helps create walkability

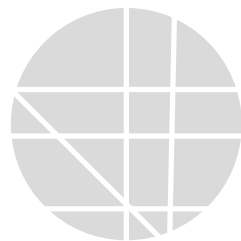
Intersection Density



Cambridge
Average:
426/mi²



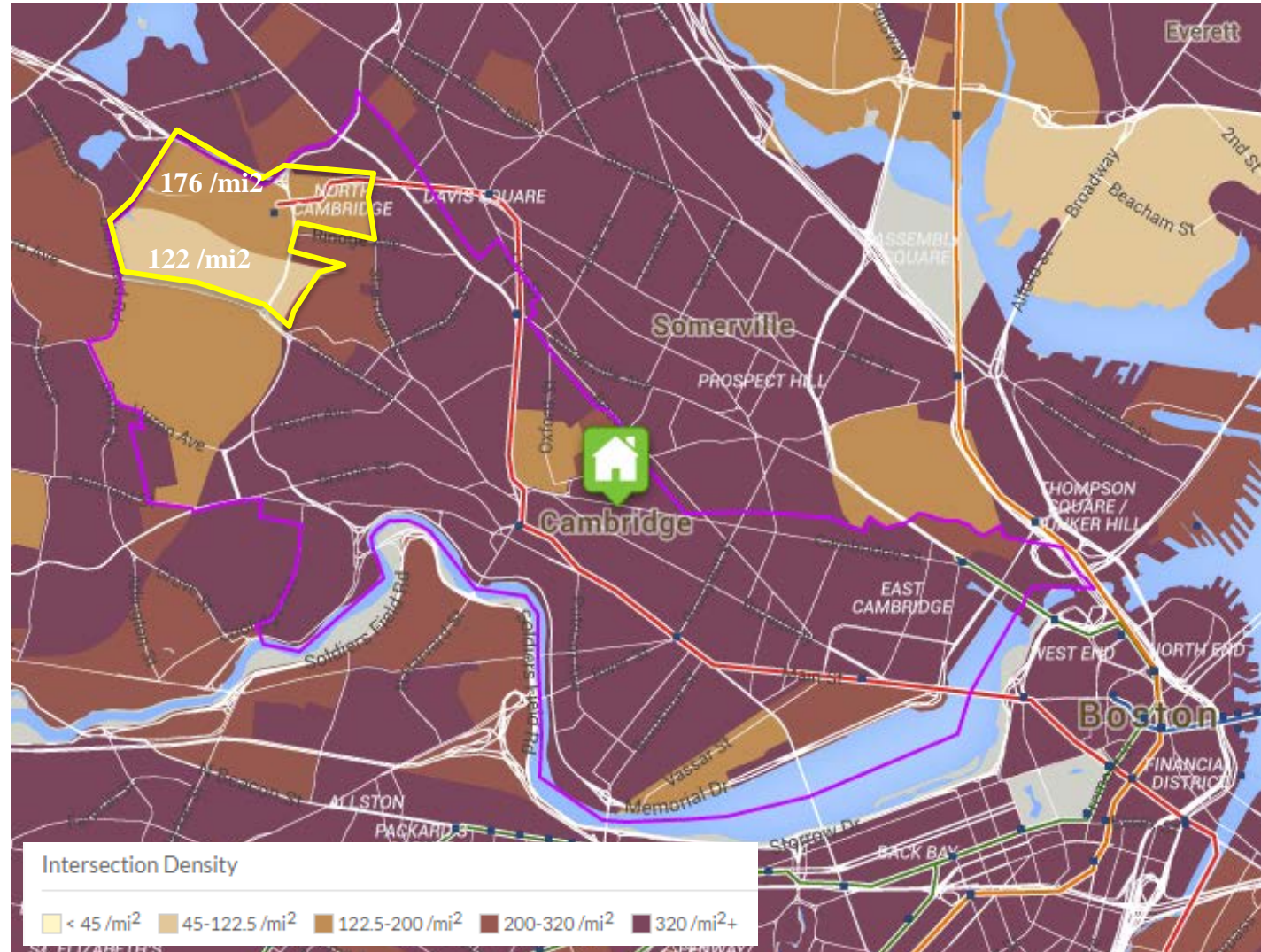
Alewife
Station Area
176/mi²



Best Practice:
Central Sq.
1,224/mi²






Alewife Concord Ave
@Brook Pkwy:
122/mi²

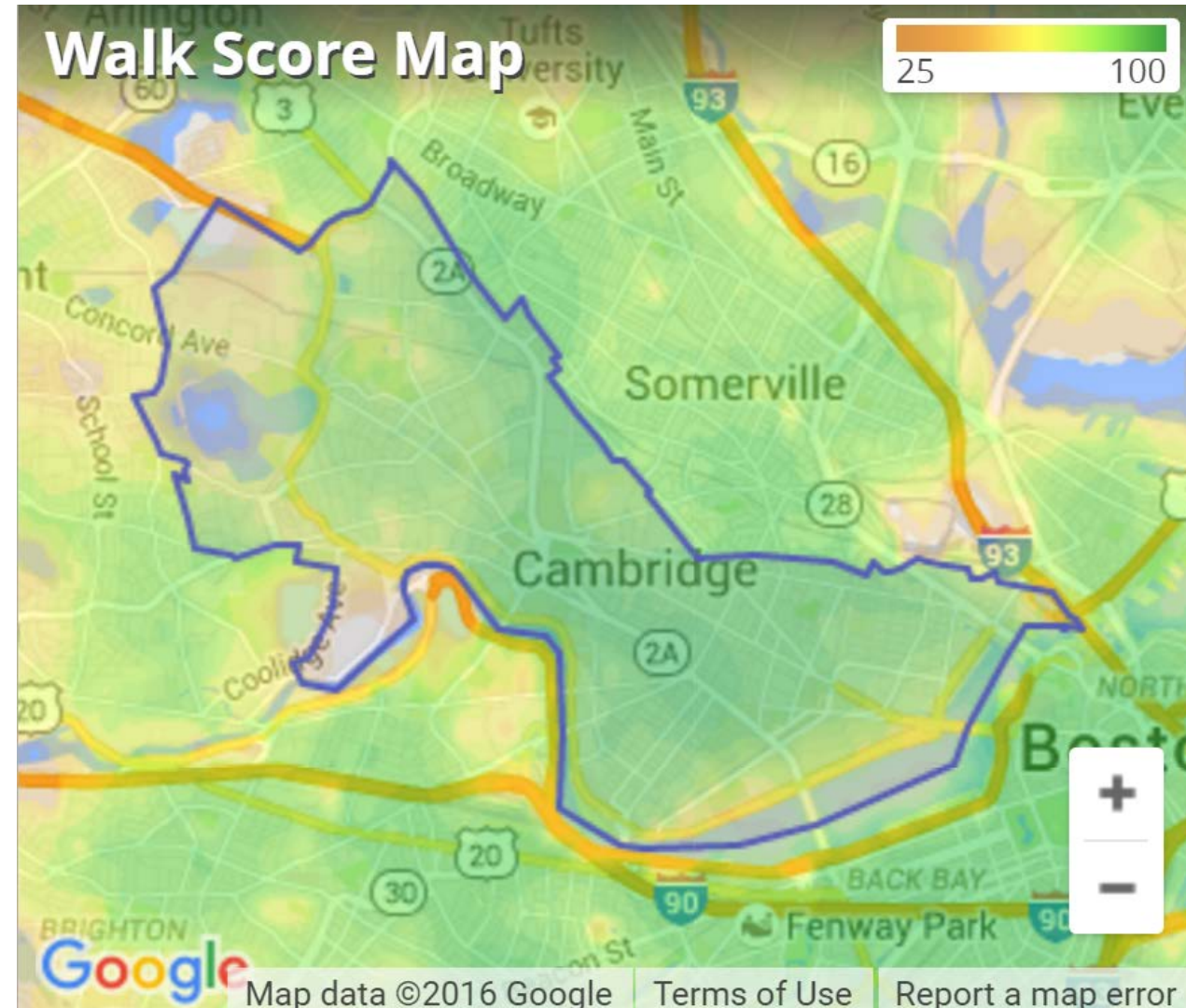


(Source: Center for Neighborhood Technology)



Alewife – Walking, transit, bike

	Walk score 	Transit score 	Bike score 
Cambridge Average	88	72	93
Alewife	68	68	92
Central Square	98	73	99
East Cambridge	90	84	94



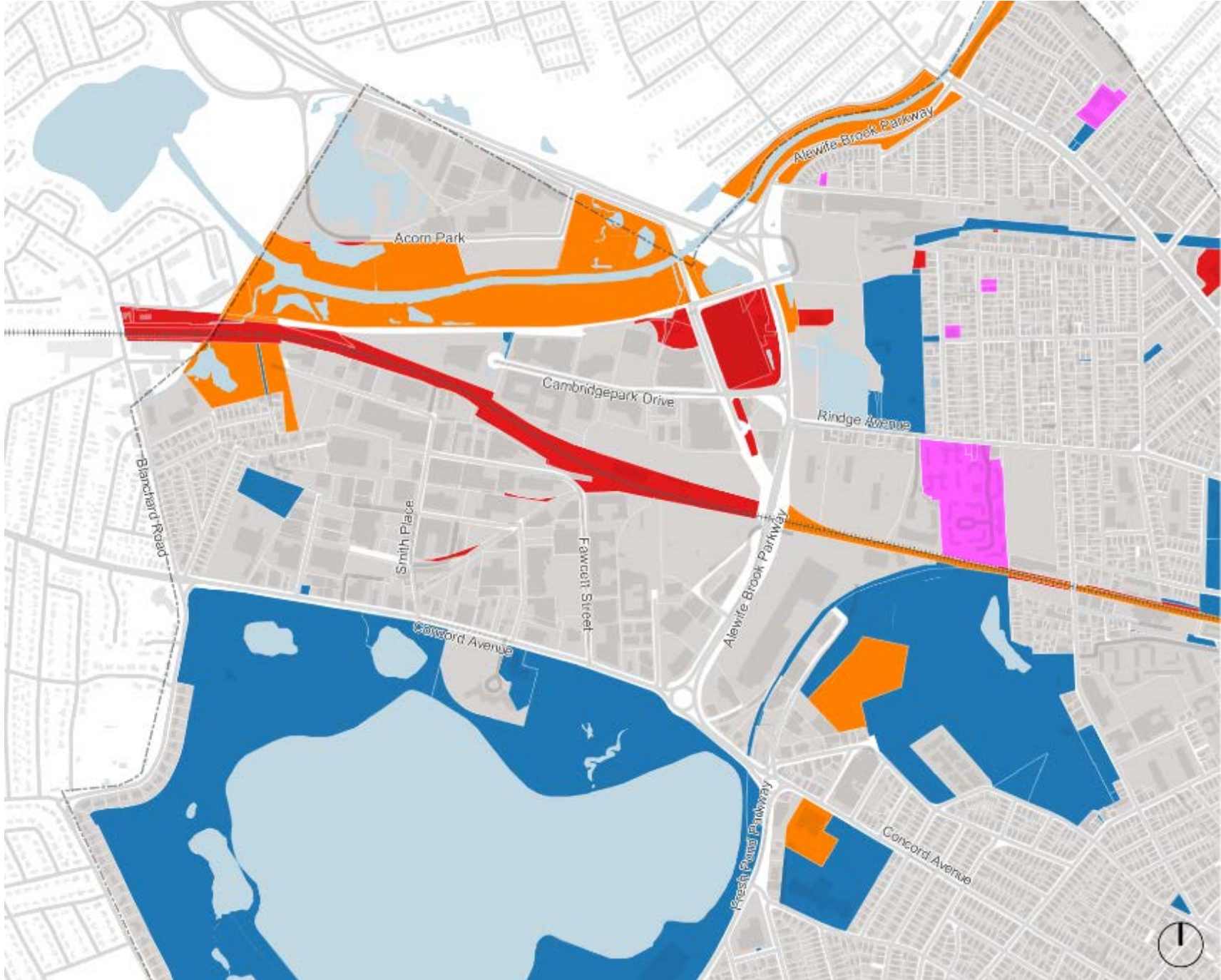
(Source: www.walkscore.com/)

Land Ownership Public vs Private

Land Ownership

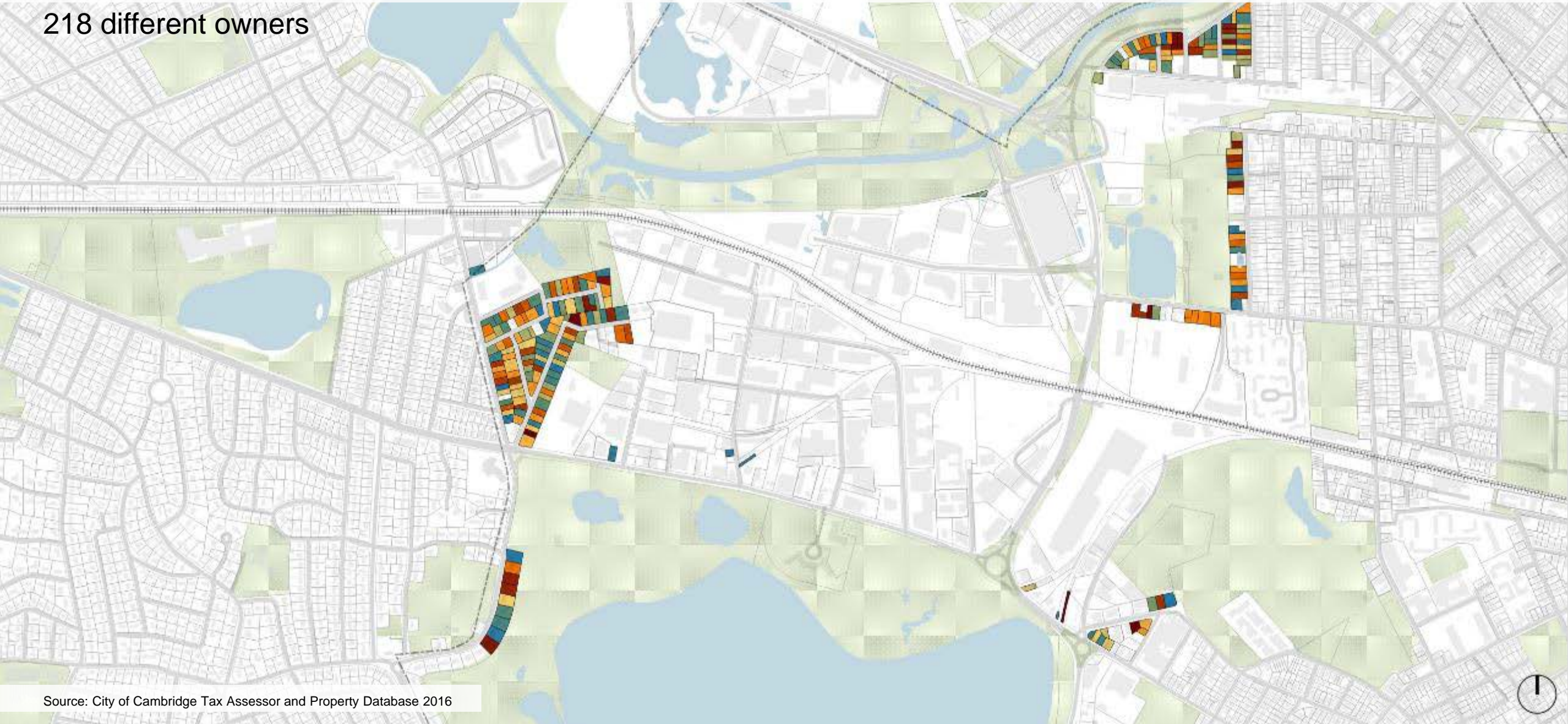
- Private
- City of Cambridge
- MBTA
- Commonwealth of MA
- Cam. Housing Authority

Source: City of Cambridge Tax Assessor and Property Database 2016



Land Ownership - Parcels under 12,000 sq. ft.

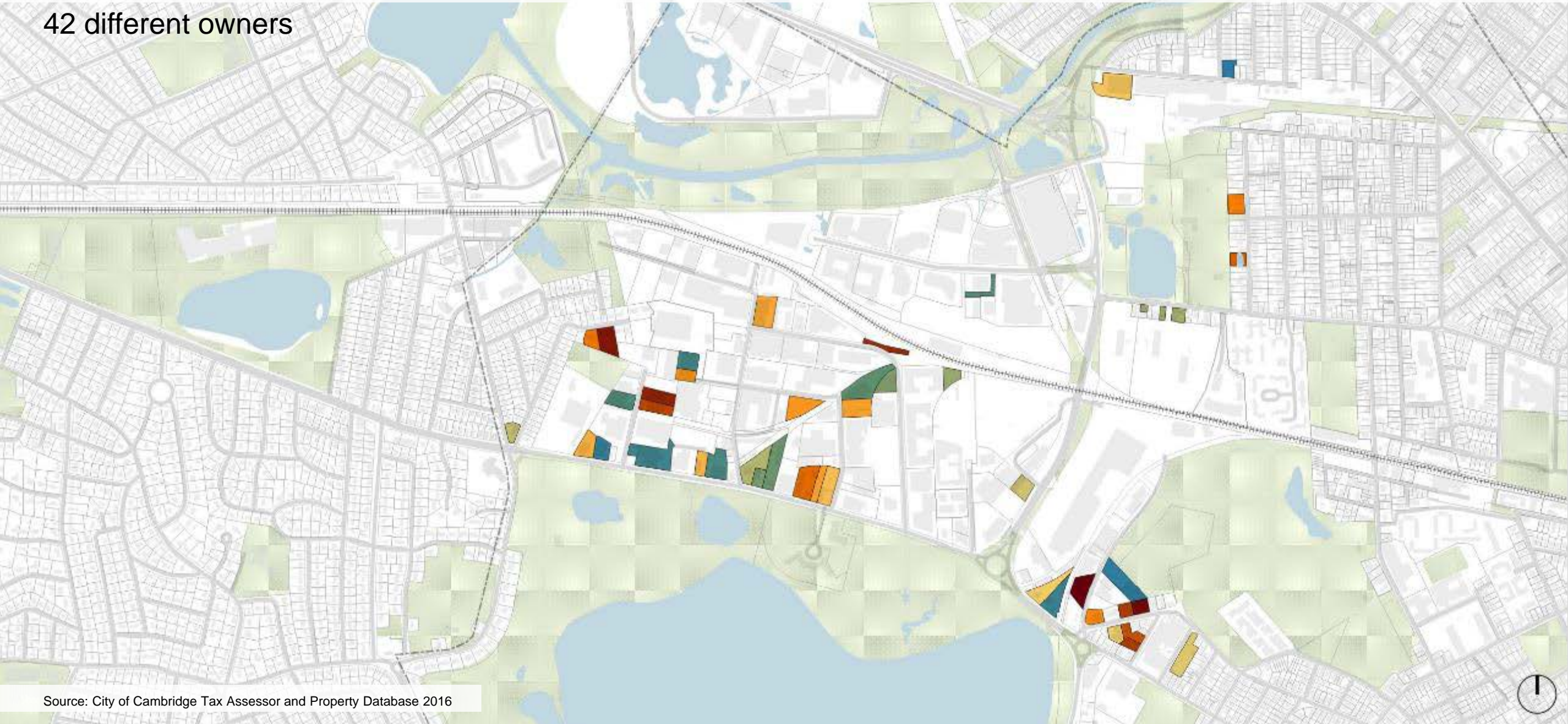
218 different owners



Source: City of Cambridge Tax Assessor and Property Database 2016

Land Ownership - Parcels between 12,000 and 50,000 sq. ft.

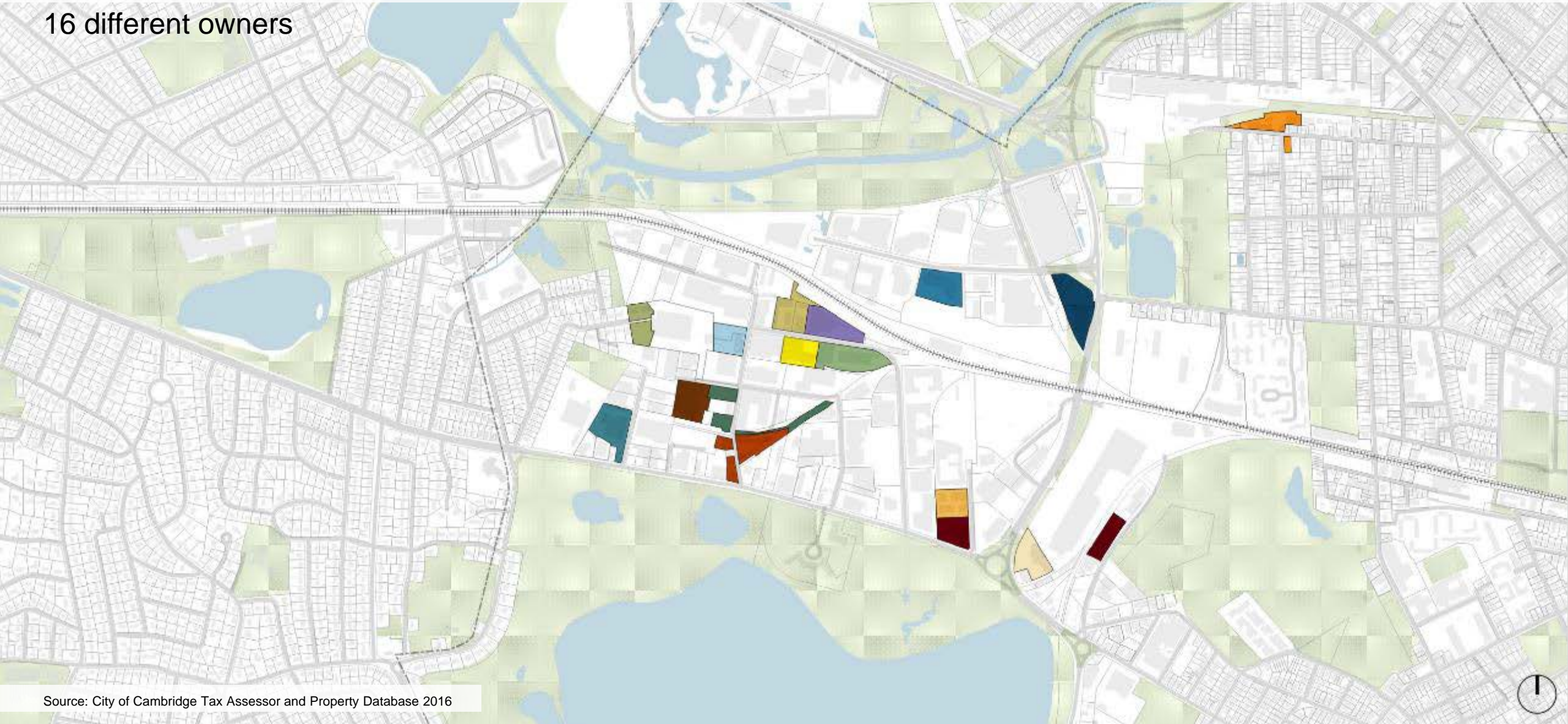
42 different owners



Source: City of Cambridge Tax Assessor and Property Database 2016

Land Ownership - Parcels between 50,000 and 100,000 sq. ft.

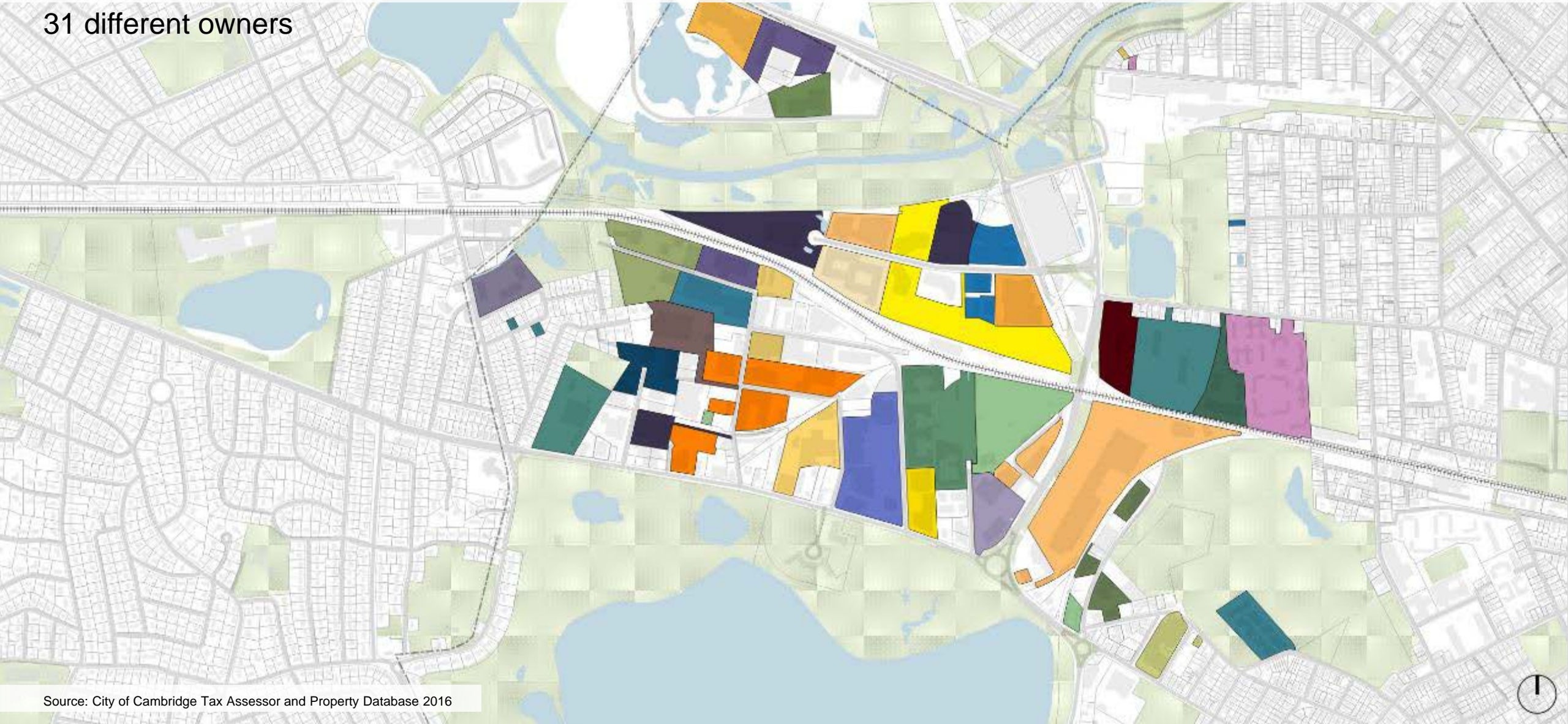
16 different owners



Source: City of Cambridge Tax Assessor and Property Database 2016

Land Ownership - Parcels between 100,000 and 1,000,000 sq. ft.

31 different owners

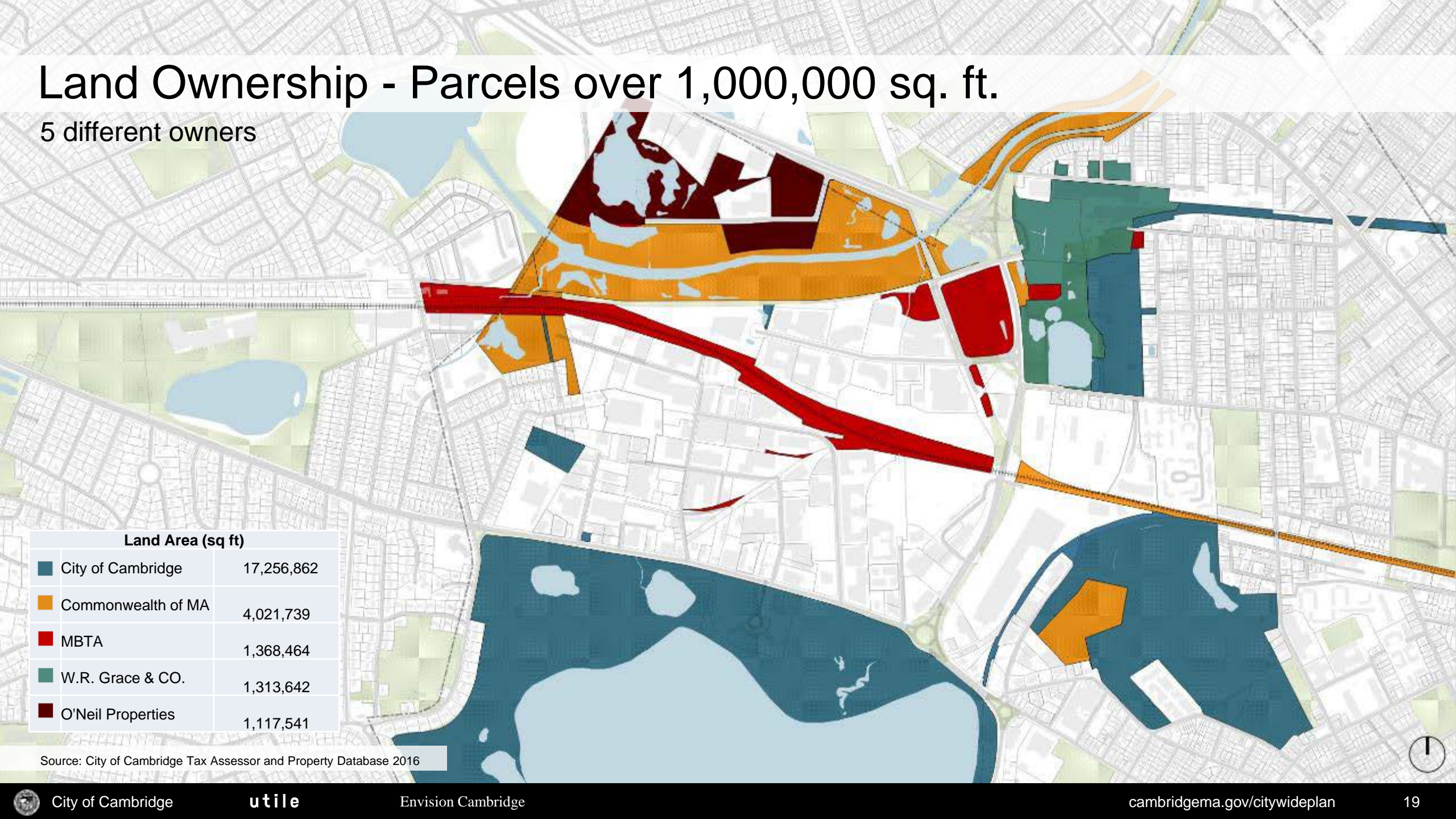


Source: City of Cambridge Tax Assessor and Property Database 2016



Land Ownership - Parcels over 1,000,000 sq. ft.

5 different owners



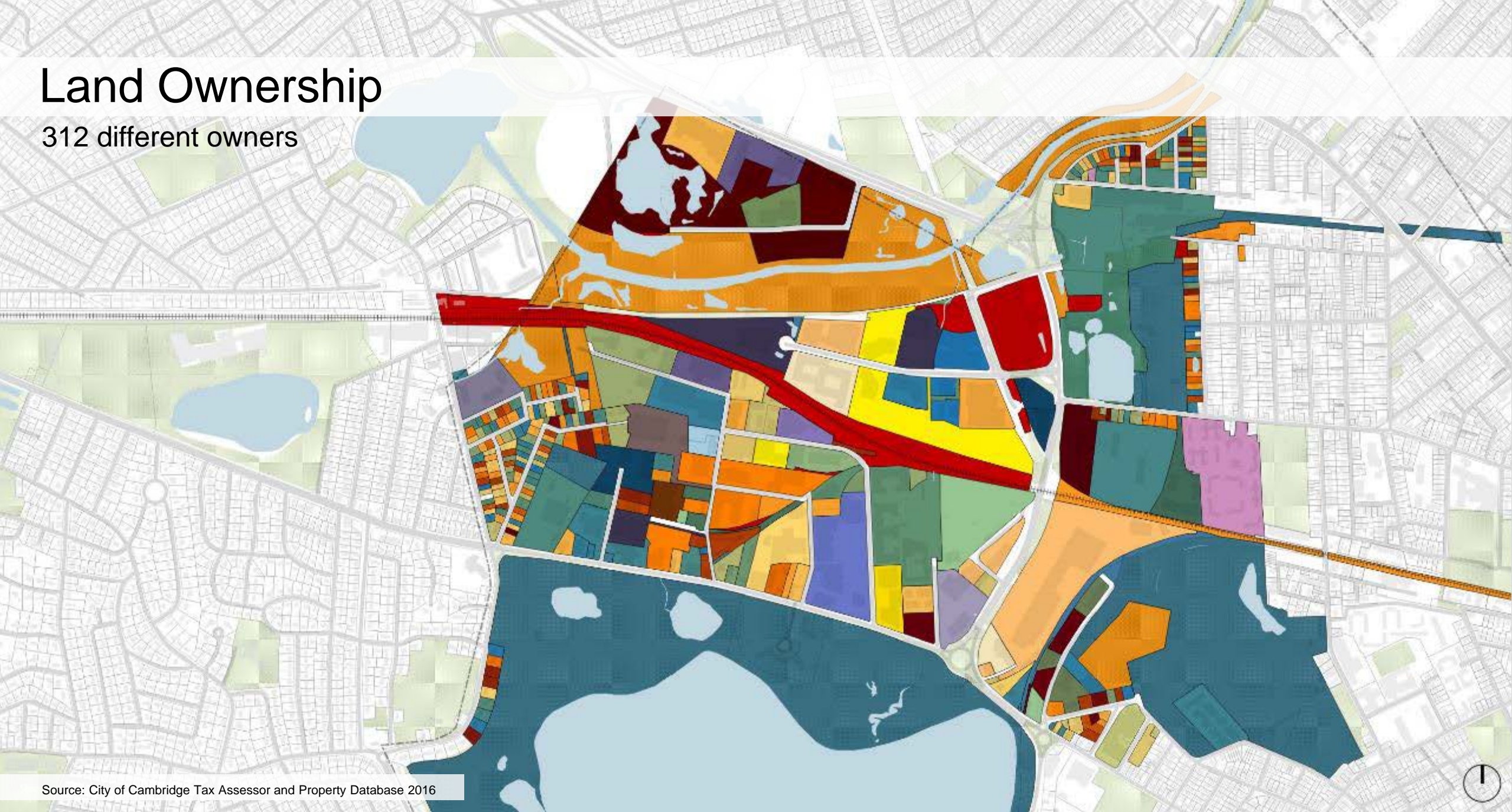
Land Area (sq ft)	
City of Cambridge	17,256,862
Commonwealth of MA	4,021,739
MBTA	1,368,464
W.R. Grace & CO.	1,313,642
O'Neil Properties	1,117,541

Source: City of Cambridge Tax Assessor and Property Database 2016



Land Ownership

312 different owners



Source: City of Cambridge Tax Assessor and Property Database 2016

Key Planning Topics

- *Community Interaction*
- *Housing*
- *Economy*
- *Urban Form*
- *Climate and the Environment*
- *Mobility*

Ways to be involved

- **Apply for Mobility Working Group (or other topic-specific groups)**
- Attend Advisory Committee and Working Group meetings, public meetings and workshops
- Sign up for email list (via website)
- Website: envision.cambridgema.gov