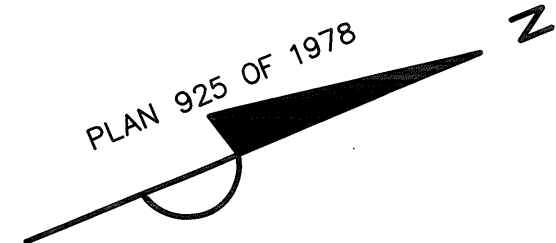


MT. AUBURN STREET

HARVARD SQUARE

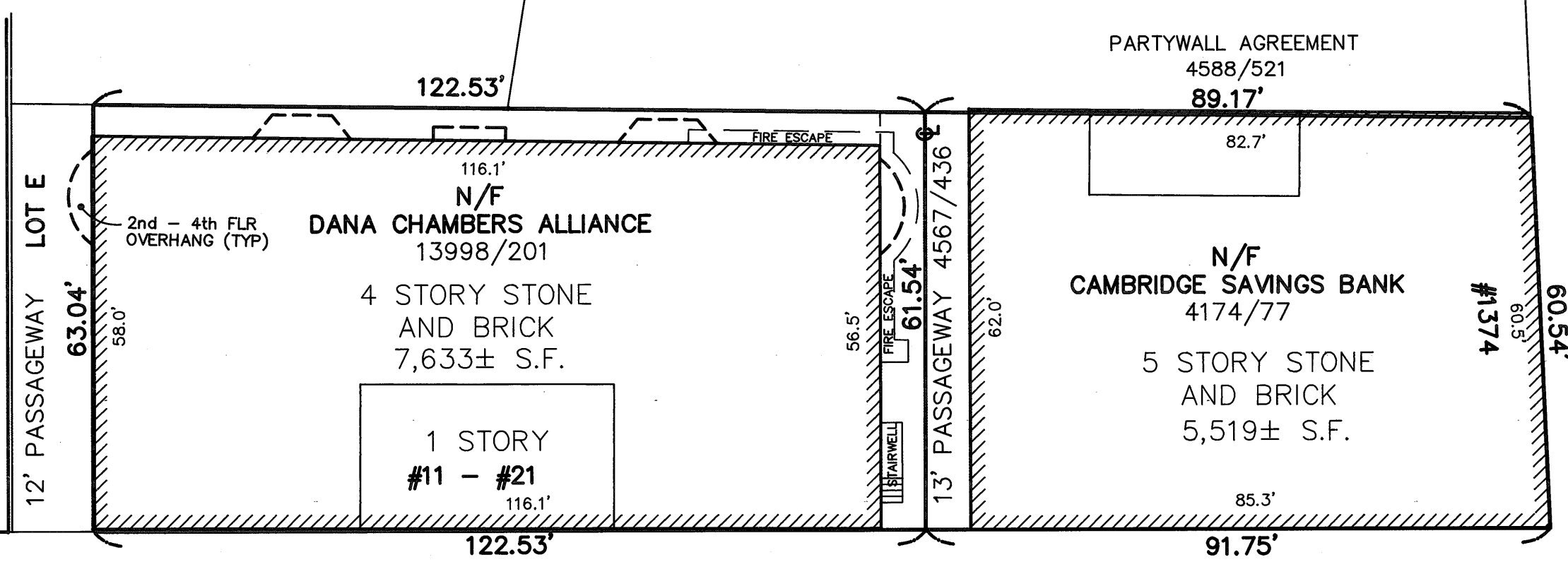
MASSACHUSETTS AVENUE



N/F
TRUSTEES OF THE
CHAMPAGNE REALTY TRUST
14892/65
LOT B

N/F
THELMA GORFINKLE ALPER, ET. AL.
18515/227
LOT A

N/F
TRINITY REALTY LIMITED
PARTNERSHIP I
14843/178



DUNSTER STREET

REFERENCES:

MIDDLESEX COUNTY REGISTRY OF DEEDS
PLAN BOOK 315 PLAN 30
" " 102 " 39
PLAN 271 OF 1946

ASSESSORS MAP 160 LOT 58 (1374 MASS AVE.)
ASSESSORS MAP 160 LOT 59 (11-21 DUNSTER ST.)

I HEREBY CERTIFY THAT THE BUILDINGS
ARE LOCATED AS SHOWN.

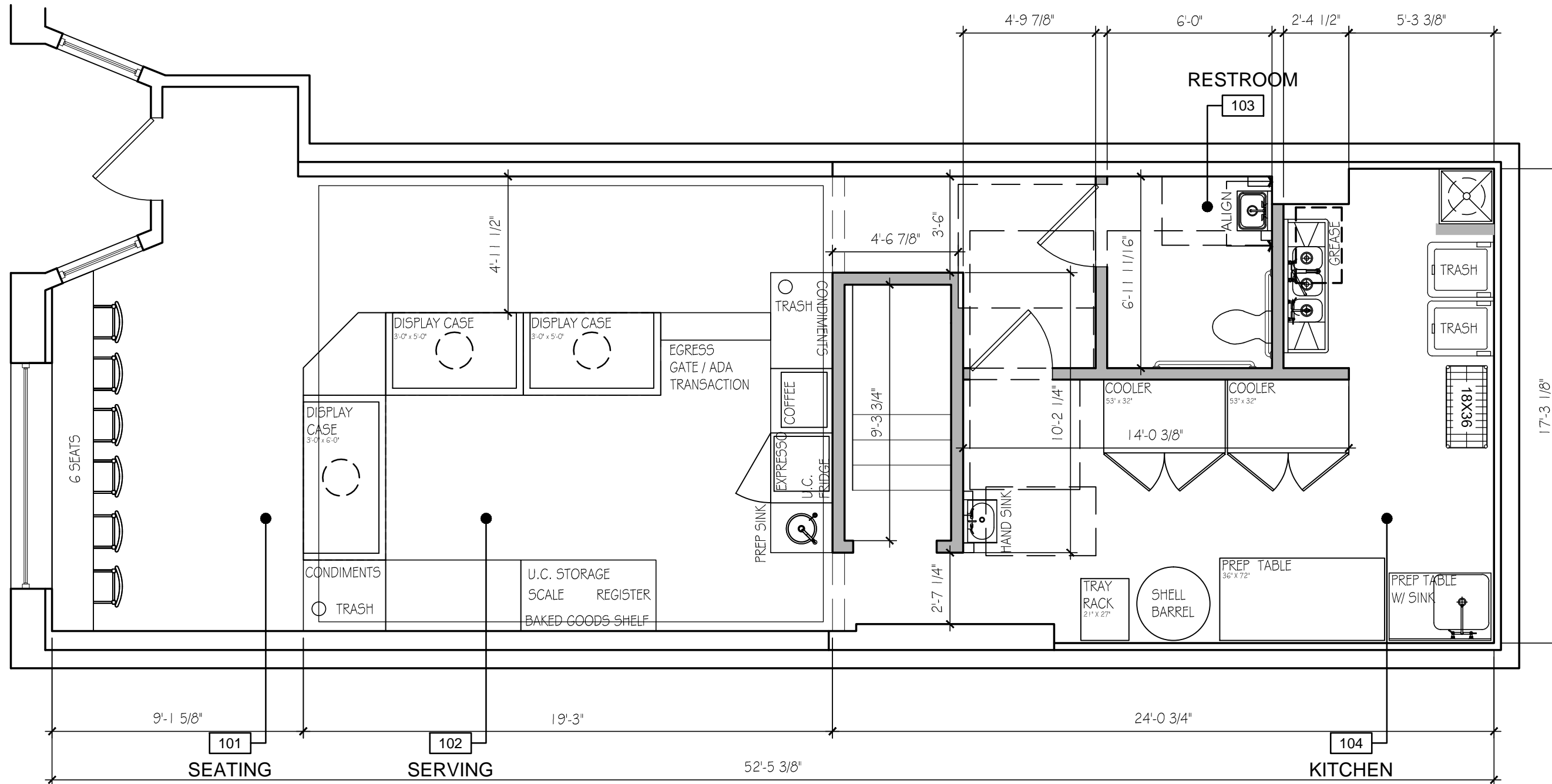


Kevin W. Hinds 3/18/93
KEVIN W. HINDS, PLS DATE

PLOT PLAN
IN
CAMBRIDGE, MA
(MIDDLESEX COUNTY)
SCALE: 1' = 20' DATE: MARCH 18, 1993

H & R SURVEY
33 WALNUT STREET
ARLINGTON, MA 02174
(617) 648-5533
DWG. NO. 310PP1.DWG

COPYRIGHT (C) BY PHASE ZERO DESIGN INC. ALL RIGHTS RESERVED. NO PART OF THIS DOCUMENT MAY BE REPRODUCED, STORED IN A RETRIEVAL SYSTEM, OR TRANSMITTED IN ANY FORM OR BY ANY MEANS, ELECTRONIC, MECHANICAL, PHOTOCOPYING, RECORDING, OR BY ANY INFORMATION STORAGE AND RETRIEVAL SYSTEM, WITHOUT THE WRITTEN PERMISSION OF PHASE ZERO DESIGN INC. SHALL BE MADE OR UNLAWFUL.



MIKE'S PASTRY

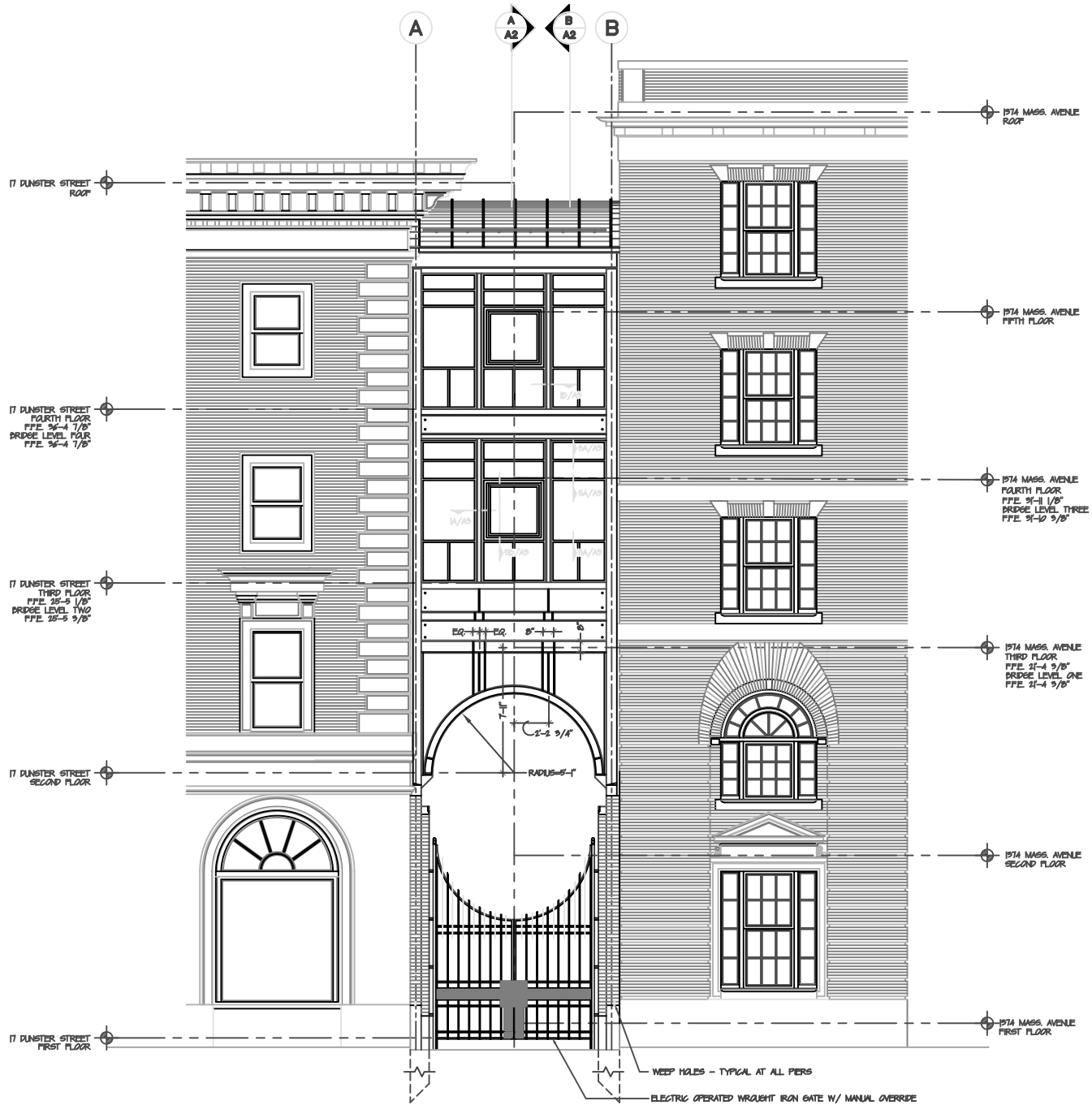
11 Dunster Street
 Cambridge, MA 02138

PROJ. NO.: 2113160
 DRAWN BY: JMC
 CHECKED BY: JRK
 Copyright (c) by Phase Zero Design Corp. All Rights Reserved.
 SCALE: 1/4" = 1'-0"
 REVISION:
 DATE: 12.06.13

SHEET TITLE:
PROPOSED FLOOR PLAN

REFERENCE:

SHEET NUMBER:
PP-1



COPYRIGHT (C) BY PHASE ZERO DESIGN INC. ALL RIGHTS RESERVED.
NO PART OF THIS DOCUMENT MAY BE REPRODUCED, STORED IN A RETRIEVAL SYSTEM, OR TRANSMITTED IN ANY FORM OR BY ANY MEANS, ELECTRONIC,
MECHANICAL, PHOTOCOPYING, RECORDING, OR BY ANY INFORMATION STORAGE AND RETRIEVAL SYSTEM, WITHOUT THE WRITTEN PERMISSION OF PHASE ZERO DESIGN INC. SHALL BE MADE IN ANY MANNER.
ANY MODIFICATIONS MADE TO THIS DOCUMENT WITHOUT THE WRITTEN PERMISSION OF PHASE ZERO DESIGN INC. SHALL RENDER IT INVALID AND UNUSABLE.



ARCHITECT:



40 TREMONT STREET, SUITE 62
DUXBURY, MASSACHUSETTS 02332
PHONE: (781) 452-7121
FAX: (860) 264-1628
WEBSITE: www.phasezerodesign.com

MIKE'S PASTRY

11 Dunster Street
Cambridge, MA 02138

PROJ. NO.: 2113160

DRAWN BY: JMC

CHECKED BY: JRK

Copyright (c) by Phase Zero
Design Corp. All Rights Reserved.

SCALE: 1/4" = 1'-0"

REVISION:

DATE: 12.06.13

SHEET TITLE:

EXISTING
PHOTOS

REFERENCE:

SHEET NUMBER:

PP-2