

Master Plan Special Permit PB 198

Major Amendment,
Parking Overlay District Special Permit and
Design Review of Building 600

Volume III- Renderings
July 22, 2014



OWNER

BHX
Trustee of ACORN PARK HOLDINGS
c/o Robert A. Schlager, CPM
250 First Avenue, Suite 200
Needham, MA 02494-2805
T: (781) 707- 4000. x122
F: (781) 707-4001
www.bulfinch.com

ARCHITECT

Add Inc.
311 Summer Street
Boston MA, 02210
T: (617) 234-3100
F: (617) 661-7118
www.addinc.com
Larry Grossman, AIA
lgrossman@addinc.com

MEP/FP ENGINEER

AHA Consulting Engineers
10 Mcguire Road Suit 121
Lexington, MA 02421
T: (781) 372-3000
F: (781) 372-3100
Martin Holloran
Marty_Holloran@aha_engineers.com

STRUCTURAL ENGINEER

Simpson, Gumpertz & Heger, Inc.
41 Seyon Street
Building 1 Suite 500
Waltham MA 02453
T: (781) 907-9000
F: (781) 907-9009
Pedro Sifre, Project Engineer, x377
pjsifre@sgh.com

DEVELOPER

The Bulfinch Companies, Inc.
250 First Avenue Suit 200
Needham, MA 02494-2805
T: (781) 707- 4000
F: (781) 707-4001
www.bulfinch.com
Robert A. Schlager, CMP
ras@bulfinch.com
Mark DiOrio
mdr@bulfinch.com

CIVIL COORDINATOR

Paul Finger Associates
Paul Finger RLA
281 Winter Street
Waltham, MA 02451
T: (781) 372- 3000
F: (781) 647- 4924
pfinger@pfia.net

GEO TECHNICAL ENGINEER

McPhail Associates
30 Norfolk Street
Cambridge MA, 02139
T: (617)868- 1420
F: (617) 869-1423
www.mcphailgeo.com

SURVEY ENGINEER

BSC Group
15 Elkins Street
Boston, MA 02127
T: (617) 869-4300
F: (617) 896-4301
Dave Varga, P.E. – Utilities Engineer
Dvarga@BSCgroup.com
Dave Biancavilla, P.E LEED, AP,
Project Principal
Dbiancavilla@BSCGroup.com

TRANSPORTATION ENGINEER

Vanasse & Associates, Inc
Giles Ham, P.E
gham@rdva.com
Scott Thornton
sthorton@rdva.com
10 New England Business Center
Suite 314
Andover, MA 08180
T: (978) 474-8800
F: (978) 688-6508

NOISE CONSULTANTS

Acentech
33 Moulton Street
Cambridge MA, 02139
T: (617) 499-8000
F: (617) 499-8074
www.Acentech.com

CODE CONSULTANT

Remmer Consulting
Norten Remmer, P.E
18 John Street Place
Worcester, MA 01609
T: (508) 756-2777
F: (508) 756-3840
Remmer.consulting@verizon.net

WETLANDS SCIENTISTS

Ingeborg E. Hegemann, PSW
Senior Vice President
BSC Group
33 Waldo Street
Worcester , MA 01608
T: (508) 792-4500
F: (508) 792-4509
ihegemann@bscgroup.com

LEGAL CONSULTANTS

Dain, Torpy, Le Ray, Weist & Garner, P.C
Charles N LeRay, Esq., LEED AP
745 Atlantic Ave. 5th Floor
Boston MA, 02111
T: (617) 542-4880
F: (617) 542-4808
cleray@daintropy.com

PLANNER

Carlone & Associates
Dennis J. Carlone
222 Third Street, Suite 3212
Cambridge MA 02142
T: (617) 494-9559
F: (617) 621-1477
dcarlone@carloneassociates.com









Building 15

Bowling Alley

Motel

"Faces" Building

Building 20

Building 25

Building 32

Building 42

Building 40

Building 46

Building 35



“Faces” Building

Motel

Bowling Alley

Building 15

Building 100

Building 46

Building 40

Building 42

Building 100



Garage A

Building 200

Bowling Alley

Building 300



Conditions of Site: 2014 Aerial Image







Tree Buffer

Pedestrian Path

Courtyard

Plaza

Active Use

Reserve

Wetlands

WETLAND PROTECTION BOUNDARY

WETLAND 10.78 ACRES

Building 100
Gross: 25,240 SF/Floor
Gross: 158,007 GSF total, 6 stories

Building 200
Gross: 20,099 SF/Floor
Gross: 120,532 GSF total, 6 stories

Building 300
Gross: 20,723 SF/Floor
Gross: 124,338 GSF total, 6 stories

Building 400
Gross: 23,584 SF/Floor
Gross: 141,504 GSF total, 6 stories

Building 500
Gross: 26,209 SF/Floor
Gross: 157,254 GSF total, 6 stories

Building 600
Gross: 23,656 SF/Floors
Gross: 118,281 GSF total, 5 stories

Garage B
400 cars,
50 bicycles,
Gross: 28,349 SF/Floor
Gross: 141,745 GSF total,
5 levels

Garage A
604 cars, 66 bicycles,
Gross: 39,719 SF/Floor
Gross: 238,314 GSF total,
6 levels

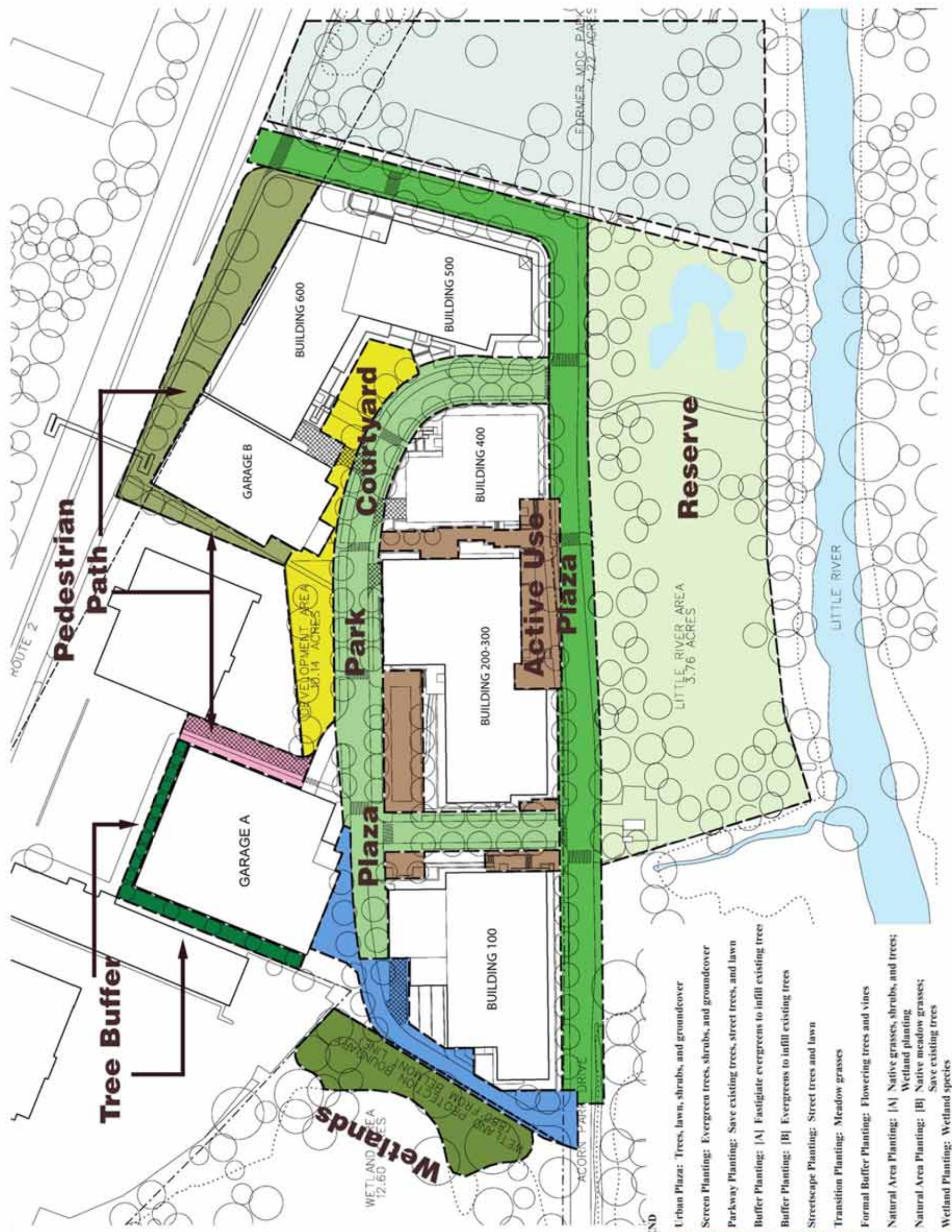
LITTLE RIVER AREA
3.76 ACRES

LITTLE RIVER

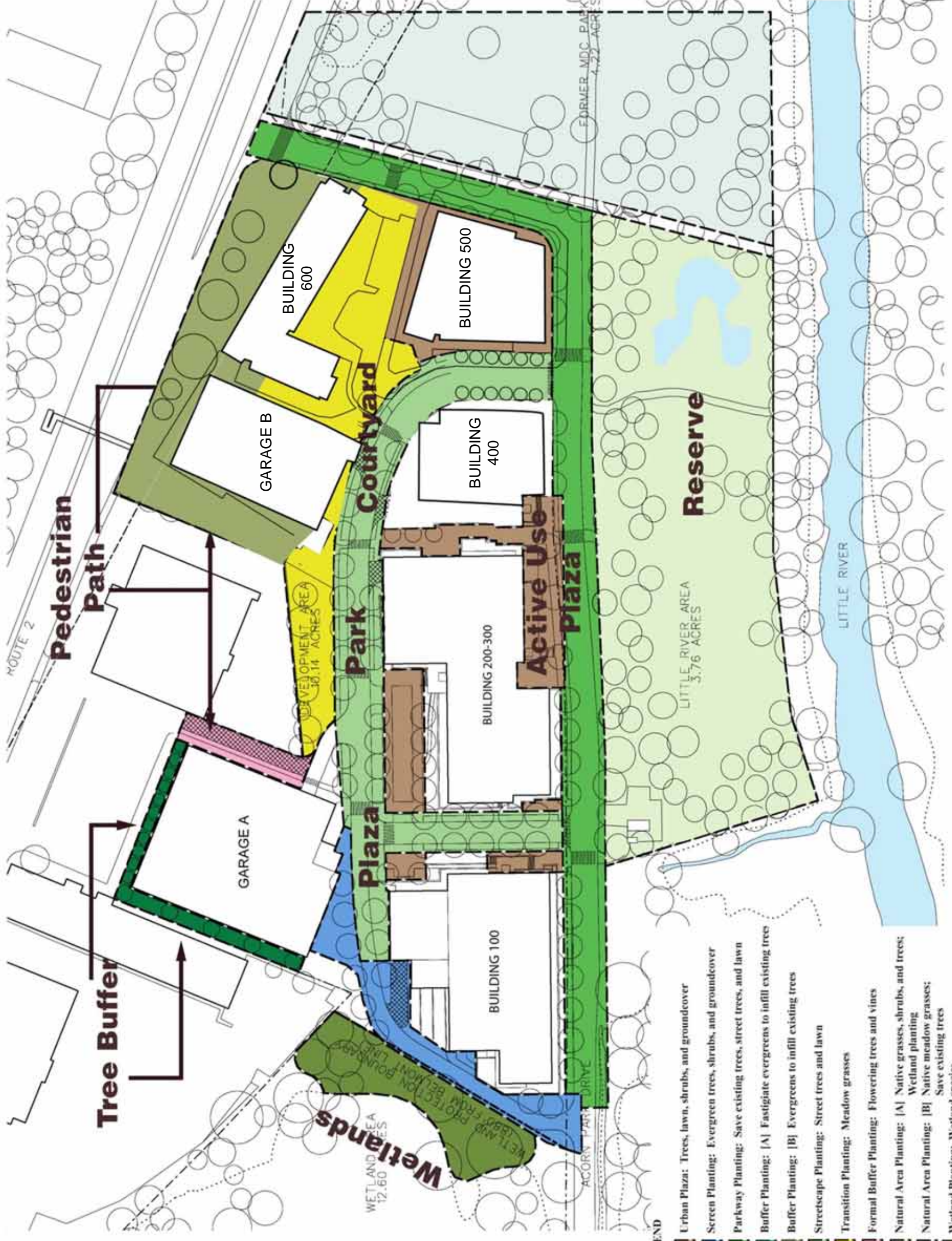
LEGEND

- Urban Plaza: Trees, lawn, shrubs, and groundcover
- Screen Planting: Evergreen trees, shrubs, and groundcover
- Parkway Planting: Save existing trees, street trees, and lawn
- Buffer Planting: [A] Fastigate evergreens to infill existing trees
- Buffer Planting: [B] Evergreens to infill existing trees
- Streetscape Planting: Street trees and lawn
- Transition Planting: Meadow grasses
- Formal Buffer Planting: Flowering trees and vines
- Natural Area Planting: [A] Native grasses, shrubs, and trees; Wetland planting
- Natural Area Planting: [B] Native meadow grasses; Save existing trees
- Wetland Planting: Wetland species





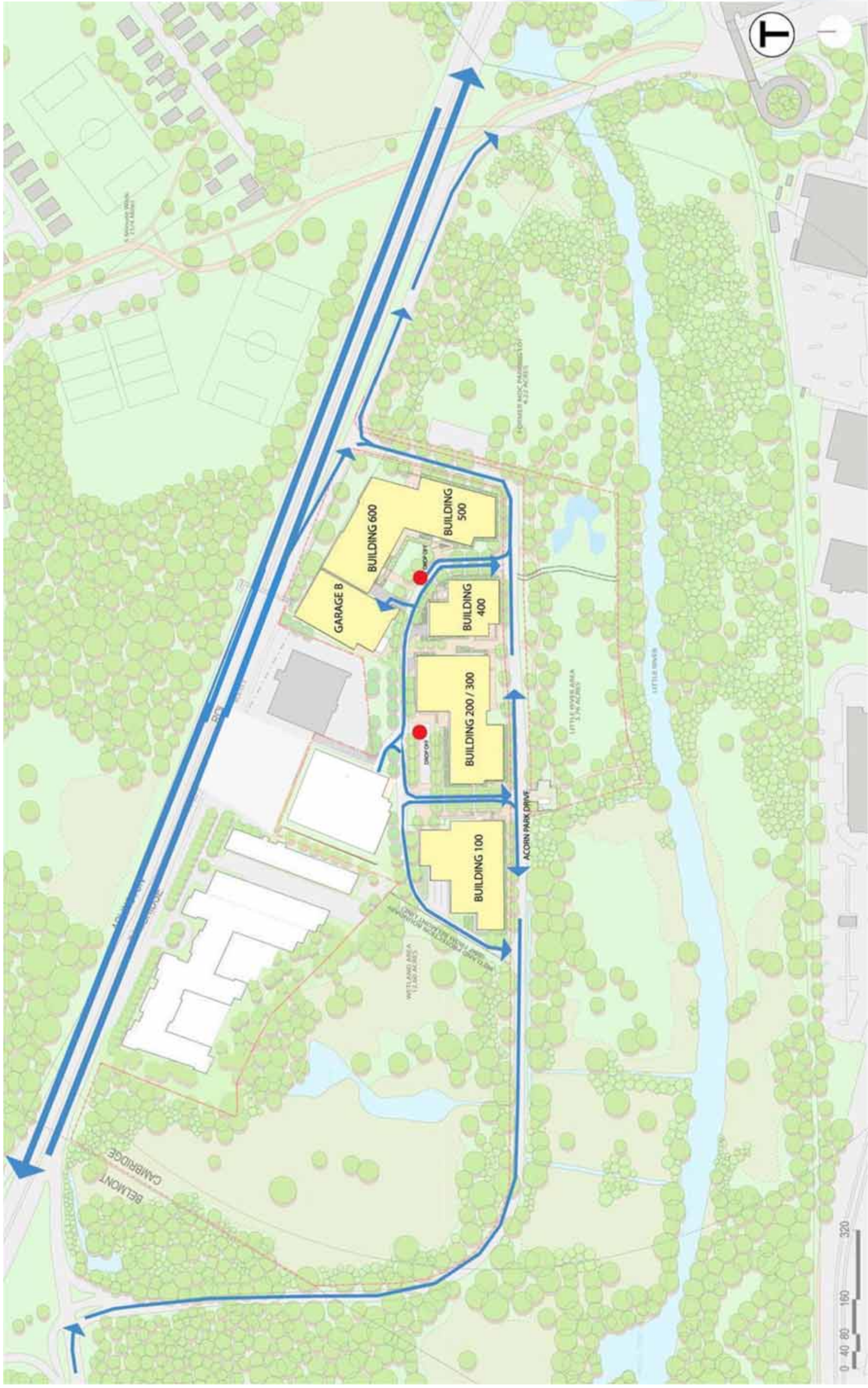
- LEGEND**
- Urban Plaza: Trees, lawn, shrubs, and groundcover
 - Screen Planting: Evergreen trees, shrubs, and groundcover
 - Parkway Planting: Save existing trees, street trees, and lawn
 - Buffer Planting: [A] Fastigiate evergreens to infill existing trees
 - Buffer Planting: [B] Evergreens to infill existing trees
 - Streetscape Planting: Street trees and lawn
 - Transition Planting: Meadow grasses
 - Formal Buffer Planting: Flowering trees and vines
 - Natural Area Planting: [A] Native grasses, shrubs, and trees; Wetland planting
 - Natural Area Planting: [B] Native meadow grasses; Save existing trees
 - Wetland Planting: Wetland species



- LEGEND**
- Urban Plaza: Trees, lawn, shrubs, and groundcover
 - Screen Planting: Evergreen trees, shrubs, and groundcover
 - Parkway Planting: Save existing trees, street trees, and lawn
 - Buffer Planting: [A] Fastigate evergreens to infill existing trees
 - Buffer Planting: [B] Evergreens to infill existing trees
 - Streetscape Planting: Street trees and lawn
 - Transition Planting: Meadow grasses
 - Formal Buffer Planting: Flowering trees and vines
 - Natural Area Planting: [A] Native grasses, shrubs, and trees; Wetland planting
 - Natural Area Planting: [B] Native meadow grasses; Save existing trees
 - Wetland Planting: Wetland species

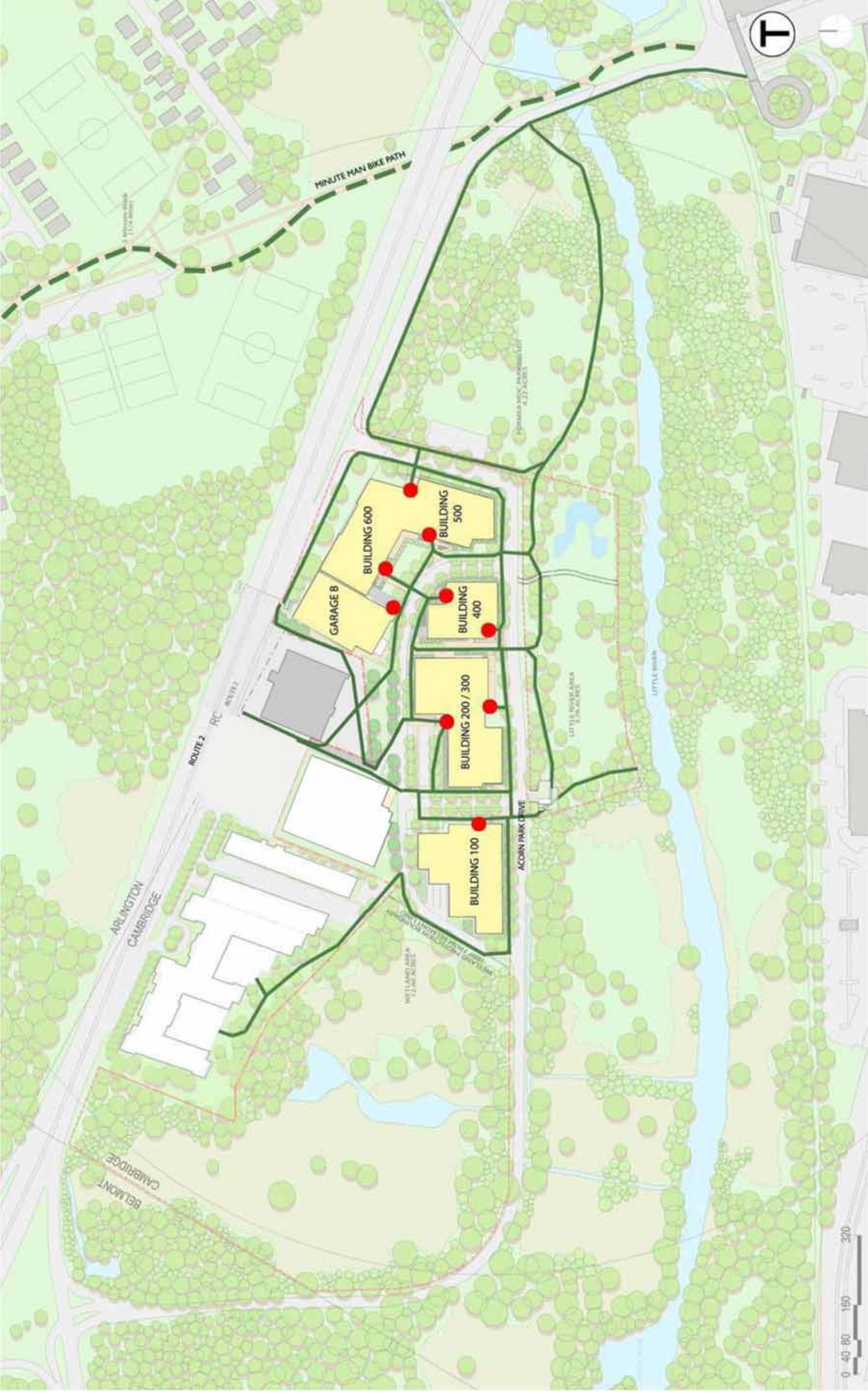






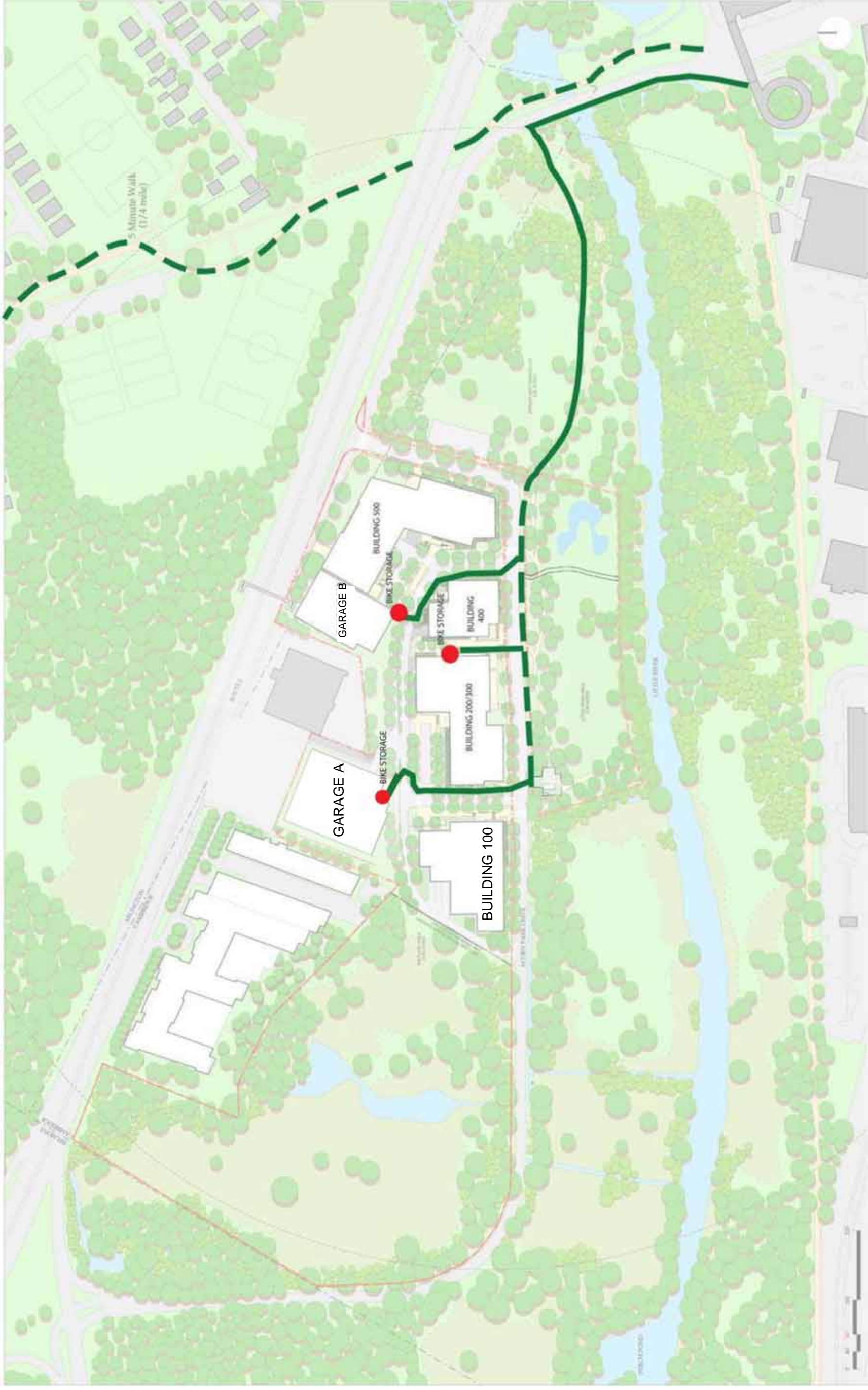


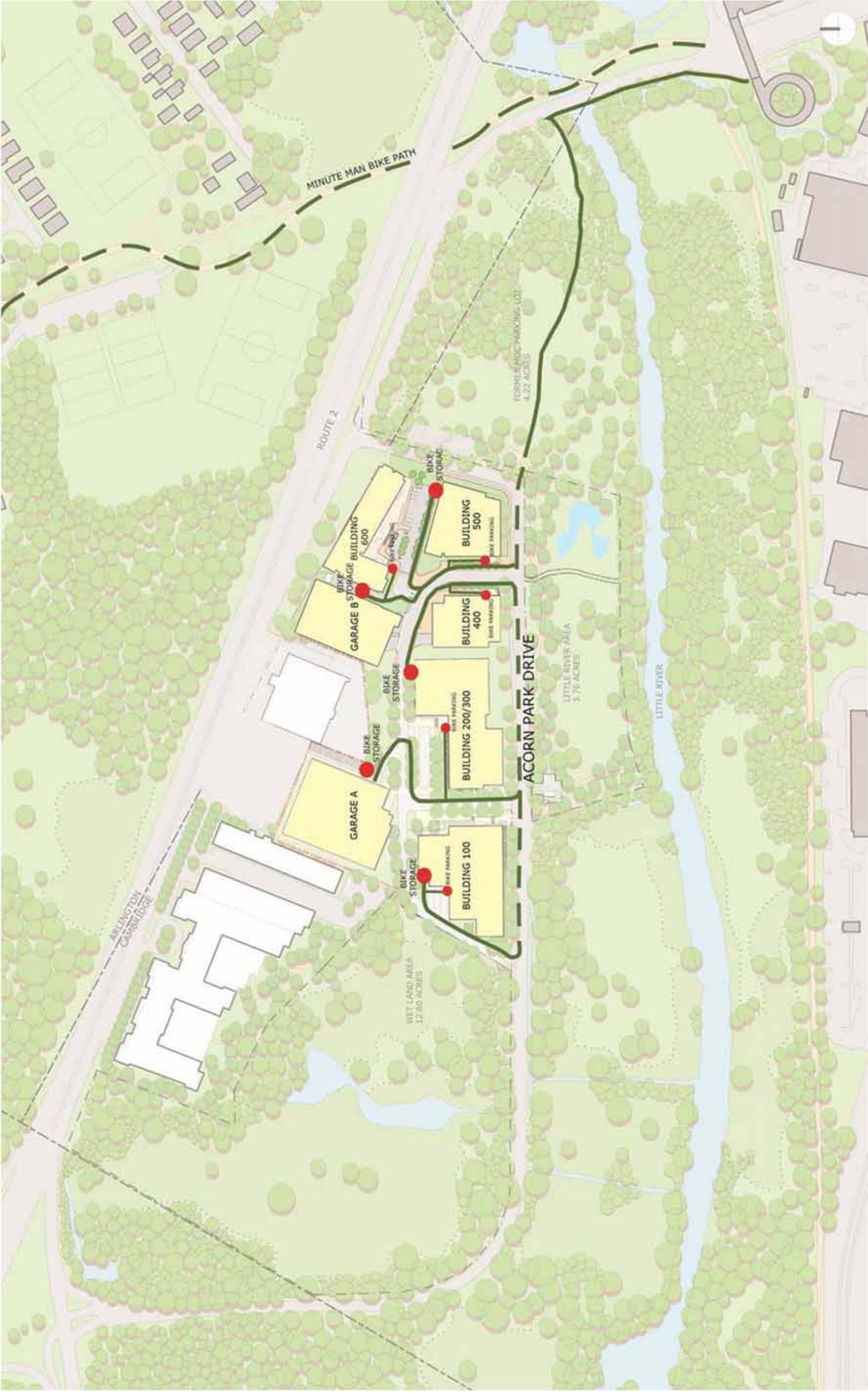




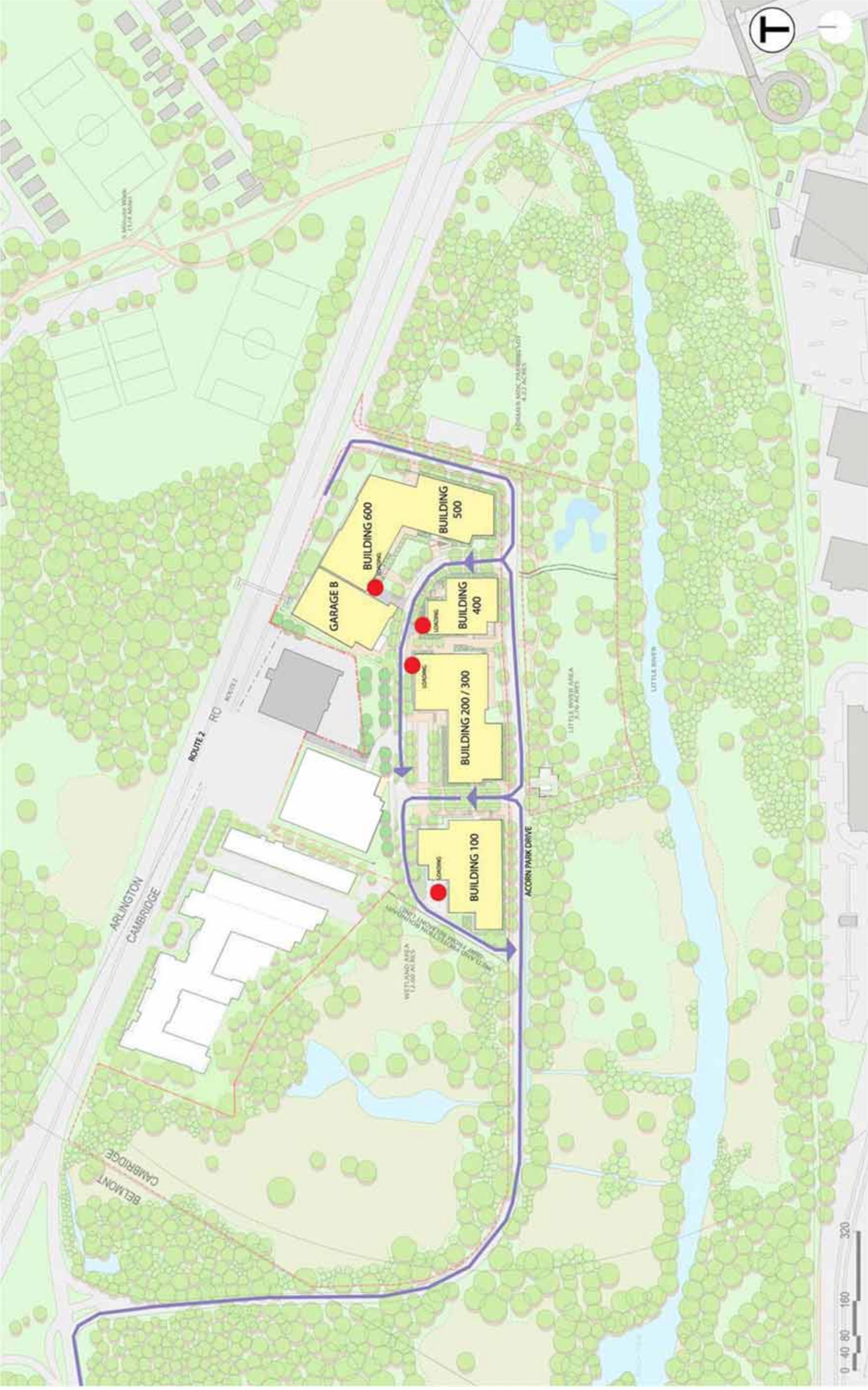














Architecture

ADD Inc





BUILDING 100 SAO



APPROACH TO BUILDING 100 SAO



MATERIAL DETAIL AT CORNER



WALKWAY TO ALEWIFE



Building 100 SAO



PEDESTRIAN APPROACH



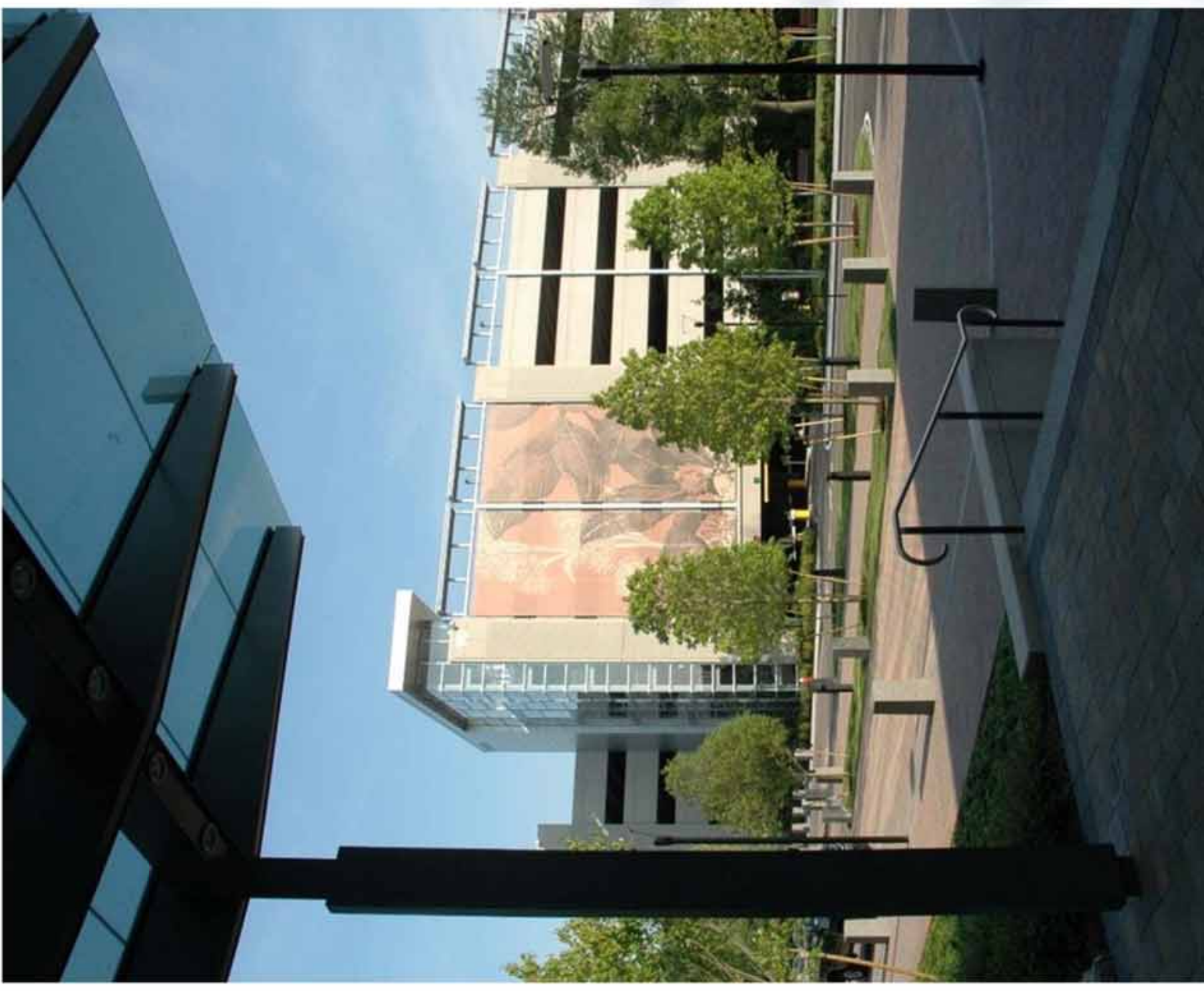
ACORN PARK DRIVE STREET VIEW



Building 100 SAO



EAST END VIEW



VIEW TOWARDS GARAGE



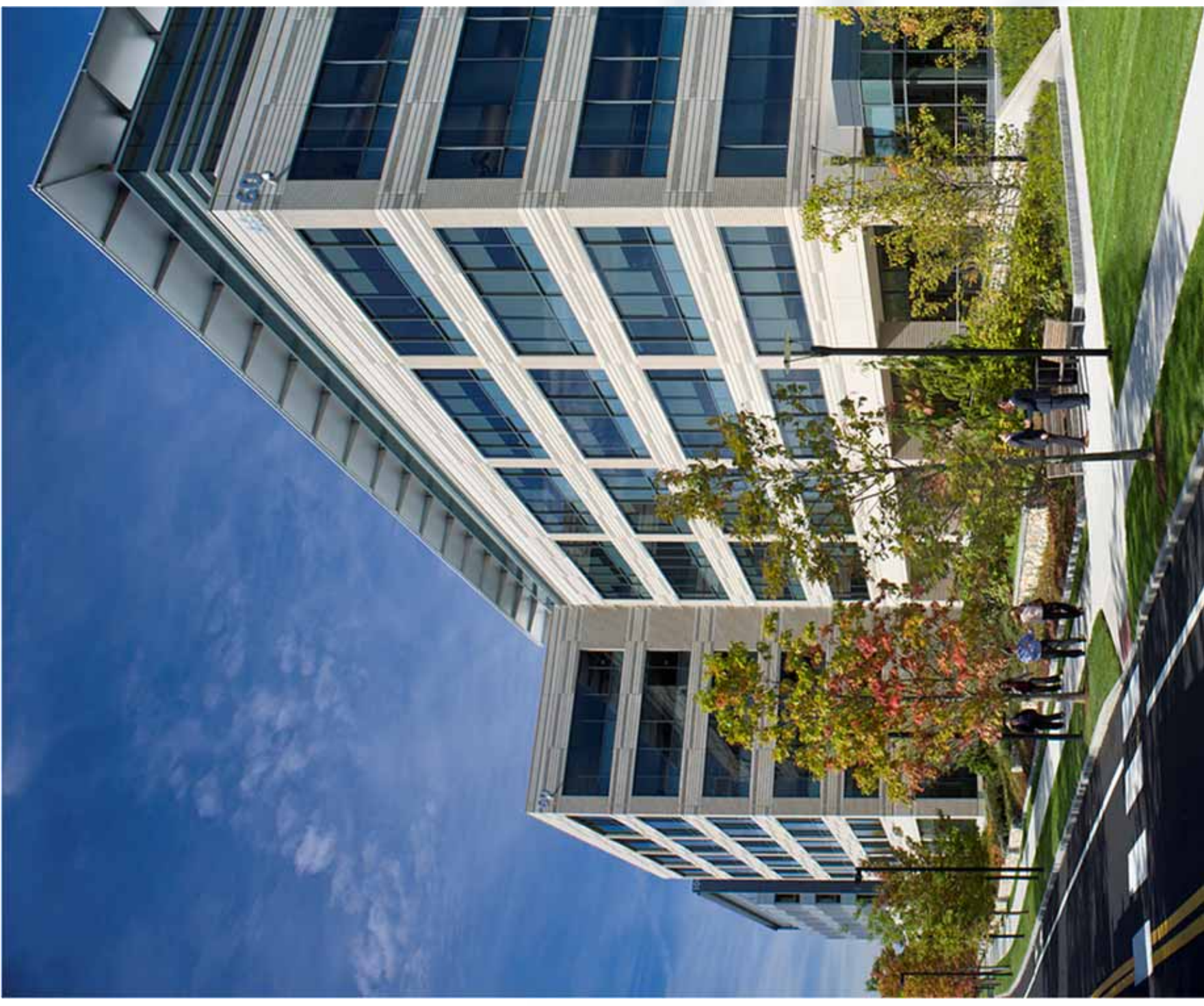
Building 200/300 Forrester Building



NORTHERN VIEW OVERALL



NORTHERN ENTRY

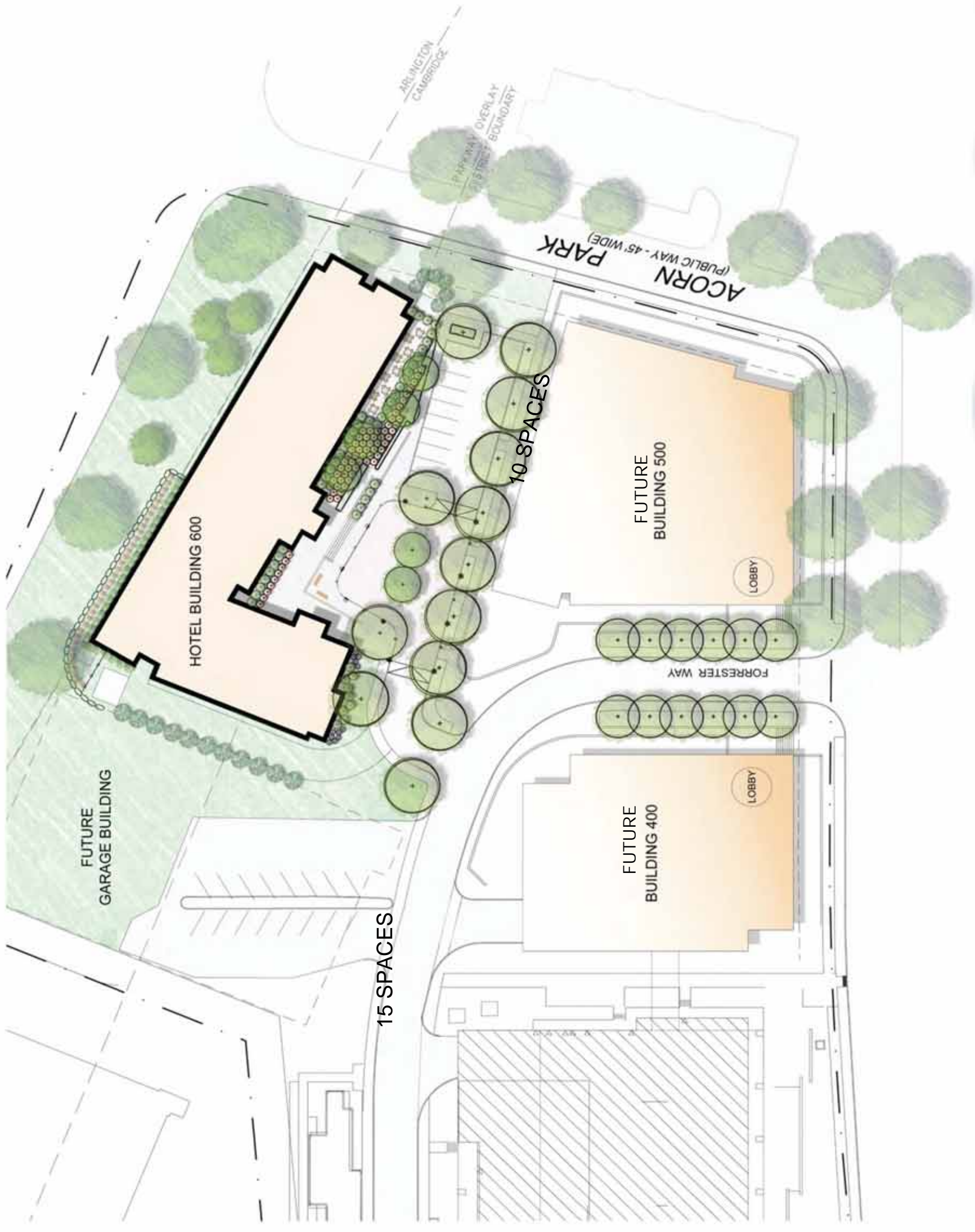


SOUTHEAST OVERALL VIEW

Building 200/300 Forrester Building







Proposed Building 600 (Hotel)
82,000 SF





Building 600 Approach from Route 2





Building 600 Courtyard







Building 600 from Wim Way



NORTH ELEVATION



SOUTH ELEVATION



EAST ELEVATION



WEST ELEVATION